



Index

Series 01

| | | |
|--|--|----------------|
| | Description | Page 15 |
| | Product Assembly | Page 16 |
| | Product Range | |
| | - pushbutton for standard mounting | Page 17 |
| | - accessories / spare parts | Page 19 |
| | Technical Data | Page 25 |
| | Technical Drawing / Dimension / Layouts | Page 27 |
| | Circuit Drawing | Page 31 |
| | Typical Applications | Page 32 |
| | Marking | Page 33 |

General Notes

The Series 01 illuminated pushbuttons are equipped with snap-action, low level switching elements.

In addition to the standard contacts (gold-plated silver), on request silver contacts for switching elements 2.8 mm plug-in terminals are available. The front dimensions of these units are 18 x 24 mm, 18 x 18 mm or 18 mm dia.

In addition to a number of illuminated pushbuttons, the customer can choose from a wide range of other units and accessories having the same front and mounting dimensions.

Mounting

Mount from the front through the mounting hole.

The universal terminals of the low-level switching elements permit them to be mounted on printed circuit boards (PCB).

These terminals are also suitable for dip soldering. For these terminals we can also supply a plug-in base which, when soldered on to the board, enables the switch to be plugged in. All rectangular switches are secured against rotation.

Lenses

The flat lenses, made of polymethyl methacrylate, are obtainable in various colours, as well as translucent or transparent.

Marking

For engraving, hot stamping and film inserts, see under "Marking" on page 33.

Illumination

Perfect illumination of the different coloured lenses is assured by lamps T 5,5 (6-60 V).

For supply voltages above 60 V, it is necessary to use a voltage reduction element (external series resistor, capacitor, or transformer). Do not solder the terminals directly, because of the high surface temperature. Multi-LED lamps T 5,5 (6, 12, 24, 48 V) are available in the colours white, red, yellow and green.

Position Indication

When a switch with maintained action is actuated, the lens remains in the depressed position mechanically. The state of the switch is apparent at all times from the position of the lens.

Number structure

01-XXX.OXX



01-9XX.X

Lens

Example:

-Illuminated pushbutton, circular; momentary action, gold-plated silver contact; soldered terminals, 1 switching element
01-131.025

-Lens red

01-983.2

Specimen order

Indicator:

- indicator, soldering terminals, 18 x 24 mm 01-040.005

Recommended accessories:

- lens, blue, 18 x 24 mm 01-982.6

- LED, 1 chip, 12 VDC, white 10-2109.3139

All dimensions in mm.

We reserve the right to modify technical data.

illuminated-/pushbutton



- 1 lens
- 2 switch housing
- 3 fixing nut

indicator



recommended accessories:

lens → 19

incandescent lamp → 21; LED → 22

| | diode (1N 4007) | connection method | 18 x 24 mm part no. | 18 x 18 mm part no. | 18 mm dia. part no. | circuit drawing | technical drawing | mounting dimension | components layout | |
|-----------|-----------------|-------------------|---------------------|---------------------|---------------------|-----------------|-------------------|--------------------|-------------------|-------|
| indicator | - | PT | 01-040.002 | 01-050.002 | 01-030.002 | 1 | 1 | 1 | 1 | 0,006 |
| | | ST | 01-040.005 | 01-050.005 | 01-030.005 | 2 | 1 | 1 | 1 | 0,006 |
| | | UT | 01-041.006 | 01-051.006 | 01-031.006 | 1 | 3 | 1 | 1 | 0,006 |
| | 1 | UT | 01-701.006 | 01-703.006 | 01-741.006 | 3 | 2 | 1 | 1 | 0,008 |
| | 2 | UT | 01-702.006 | 01-704.006 | 01-742.006 | 4 | 2 | 1 | 1 | 0,008 |

connection method: ST = soldering terminal; PT = plug-in terminal; UT = universal terminal; PCB plug-in base page 20

marking see page 33

technical drawing as of page 27, mounting dimensions, components layouts as of page 29, circuit drawing as of page 31

illuminated-/pushbutton



recommended accessories:

lens → 19

incandescent lamp → 21; LED → 22

| illuminated-/pushbutton | switching system | contacts | diode (1N 4007) | switching action | connection method | 18 x 24 mm | | | circuit drawing | technical drawing | mounting dimension | components layout | | |
|-------------------------|------------------|-----------|-----------------|------------------|-------------------|------------|------------|------------|-----------------|-------------------|--------------------|-------------------|-------|-------|
| | | | | | | part no. | part no. | part no. | | | | | | |
| illuminated-/pushbutton | LL | 1NC | - | main | UT | 01-466.036 | 01-486.036 | 01-476.036 | 14 | 3 | 1 | 1 | 0,009 | |
| | | | | mom | UT | 01-426.036 | 01-456.036 | 01-436.036 | 28 | 3 | 1 | 1 | 0,009 | |
| | | 1NC + 1NO | - | main | UT | 01-463.036 | 01-483.036 | 01-473.036 | 17 | 3 | 1 | 1 | 0,009 | |
| | | | | mom | UT | 01-423.036 | 01-453.036 | 01-433.036 | 31 | 3 | 1 | 1 | 0,009 | |
| | | 1NO | - | main | UT | 01-465.036 | 01-485.036 | 01-475.036 | 16 | 3 | 1 | 1 | 0,009 | |
| | | | | mom | UT | 01-425.036 | 01-455.036 | 01-435.036 | 30 | 3 | 1 | 1 | 0,009 | |
| | | 2NC | - | main | UT | 01-462.036 | 01-482.036 | 01-472.036 | 15 | 3 | 1 | 1 | 0,009 | |
| | | | | mom | UT | 01-422.036 | 01-452.036 | 01-432.036 | 29 | 3 | 1 | 1 | 0,009 | |
| | | 2NO | - | main | UT | 01-461.036 | 01-481.036 | 01-471.036 | 18 | 3 | 1 | 1 | 0,009 | |
| | | | | mom | UT | 01-421.036 | 01-451.036 | 01-431.036 | 32 | 3 | 1 | 1 | 0,009 | |
| | | SA | 1NC + 1NO | - | main | ST/PT | 01-261.022 | 01-281.022 | 01-271.022 | 10 | 4 | 1 | - | 0,008 |
| | | | | | | ST | 01-261.025 | 01-281.025 | 01-271.025 | 13 | 4 | 1 | - | 0,008 |
| | mom | | | | ST/PT | 01-121.022 | 01-151.022 | 01-131.022 | 24 | 4 | 1 | - | 0,008 | |
| | | | | | ST | 01-121.025 | 01-151.025 | 01-131.025 | 27 | 4 | 1 | - | 0,008 | |
| | 1 | | | main | UT | 01-713.029 | 01-717.029 | 01-747.029 | 11 | 5 | 1 | 1 | 0,010 | |
| | | | | | UT | 01-705.029 | 01-709.029 | 01-743.029 | 25 | 5 | 1 | 1 | 0,010 | |
| | 2 | | | main | UT | 01-714.029 | 01-718.029 | 01-748.029 | 12 | 5 | 1 | 1 | 0,010 | |
| | | | | | UT | 01-706.029 | 01-710.029 | 01-744.029 | 26 | 5 | 1 | 1 | 0,010 | |
| | 2NC + 2NO | | | - | main | ST | 01-262.025 | 01-282.025 | 01-272.025 | 9 | 4 | 1 | - | 0,010 |
| | | | | | | ST | 01-122.025 | 01-152.025 | 01-132.025 | 23 | 4 | 1 | - | 0,010 |
| | | | | 1 | main | UT | 01-715.029 | 01-719.029 | 01-749.029 | 7 | 5 | 1 | 1 | 0,012 |
| | | | | | | UT | 01-707.029 | 01-711.029 | 01-745.029 | 21 | 5 | 1 | 1 | 0,012 |
| | | 2 | main | UT | 01-716.029 | 01-720.029 | 01-750.029 | 8 | 5 | 1 | 1 | 0,012 | | |
| | | | | UT | 01-708.029 | 01-712.029 | 01-746.029 | 22 | 5 | 1 | 1 | 0,012 | | |
| 3NC + 3NO | - | main | ST | 01-263.025 | 01-283.025 | 01-273.025 | 6 | 4 | 1 | - | 0,012 | | | |
| | | | ST | 01-123.025 | 01-153.025 | 01-133.025 | 20 | 4 | 1 | - | 0,012 | | | |
| 4NC + 4NO | - | main | ST | 01-264.025 | 01-284.025 | 01-274.025 | 5 | 4 | 1 | - | 0,014 | | | |
| | | | ST | 01-124.025 | 01-154.025 | 01-134.025 | 19 | 4 | 1 | - | 0,014 | | | |

switching system: LL = Low Level switching element, SA = snap-action switching element

switching action: main = maintained action, mom = momentary action

connection method: ST = soldering terminal; PT = plug-in terminal; UT = universal terminal; PCB plug-in base page 20

contacts: NC = normally closed, NO = normally open


power rating: Low Level switching element: 42 V/100 mA, snap-action switching element: 250 V/5 A

marking see page 33


technical drawing as of page 27, mounting dimensions, components layouts as of page 29, circuit drawing as of page 31

at front

lens

| | shape | lens/support | colour | □ 18 x 24 mm part no. | ⌀ 18 x 18 mm part no. | 18 mm dia. part no. | kg | |
|---|-----------------|------------------------------|-------------------|-----------------------------|-----------------------------|------------------------|-------|---|
| lens 12,8 x 18,8 mm, of plastic | flat | transparent/trans- lucent | blue | 01-982.6 | 01-985.6 | 01-983.6 | 0,001 |  |
| | | | colourless, clear | 01-982.7 | 01-985.7 | 01-983.7 | 0,001 | |
| | | | green | 01-982.5 | 01-985.5 | 01-983.5 | 0,001 | |
| | | | orange | 01-982.3 | 01-985.3 | 01-983.3 | 0,001 | |
| | | | red | 01-982.2 | 01-985.2 | 01-983.2 | 0,001 | |
| yellow | 01-982.4 | 01-985.4 | 01-983.4 | 0,001 | | | | |
| of plastic (not for film insert and LED) | flat | translucent/translu- cent | blue | 01-901.6 | 01-951.6 | 01-931.6 | 0,001 | |
| | | | green | 01-901.5 | 01-951.5 | 01-931.5 | 0,001 | |
| | | | orange | 01-901.3 | 01-951.3 | 01-931.3 | 0,001 | |
| | | | red | 01-901.2 | 01-951.2 | 01-931.2 | 0,001 | |
| | | | white | 01-901.9 | 01-951.9 | 01-931.9 | 0,001 | |
| yellow | 01-901.4 | 01-951.4 | 01-931.4 | 0,001 | | | | |
| of plastic (not for film insert and illumination) | flat | opaque/translucent | black | 01-901.0 | 01-951.0 | 01-931.0 | 0,001 | |
| | | | grey | 01-901.8 | 01-951.8 | 01-931.8 | 0,001 | |
| of plastic (not recommended for film insert) | flat | transparent/trans- parent | colourless, clear | 01-972.7 | 01-975.7 | 01-973.7 | 0,001 | |
| | | | green | 01-972.5 | 01-975.5 | 01-973.5 | 0,001 | |
| | | | red | 01-972.2 | 01-975.2 | 01-973.2 | 0,001 | |
| | | | yellow | 01-972.4 | 01-975.4 | 01-973.4 | 0,001 | |


protective cover

| | | | □ 18 x 24 mm part no. | ⌀ 18 x 18 mm part no. | technical drawing | kg | |
|---|--|--|-----------------------------|-----------------------------|-------------------|-------|---|
| protective cover hinged, transparent, cover to prevent accidental operation | | | 01-925 | | 6 | 0,002 |  |
| | | | | 31-920 | 7 | 0,002 | |

[technical drawing as of page 27](#)

sprayproof cover

front protection IP 67

| | front shape | material | part no. | technical drawing | mounting dimension | kg | |
|-------------------------------------|-------------|------------------|-----------------|-------------------|--------------------|-------|---|
| sprayproof cover two-part | rectangular | made of silicone | 31-924.2 | 8 | 2 | 0,003 |  |
| | square | made of PVC | 31-923 | 8 | 2 | 0,003 | |

[technical drawing as of page 27](#), [mounting dimensions as of page 29](#)

protective guard

| | construction | part no. | technical drawing | | |
|---|--------------------------|---------------|-------------------|-------|---|
| protective guard matt chromium-plated | broad sides bent upwards | 01-927 | 10 | 0,011 |  |
| | narrow ends bent upwards | 01-926 | 9 | 0,011 | |

technical drawing as of page 27


blind plug

| | colour | \square 18 x 24 mm part no. | \square 18 x 18 mm part no. | 18 mm dia. part no. | mounting dimension | | |
|-------------------|--------|-------------------------------------|-------------------------------------|------------------------|--------------------|-------|---|
| blind plug | black | 01-947.0 | 01-948.0 | 01-949.0 | 1 | 0,001 |  |

mounting dimensions as of page 29

at back

PCB plug-in base

| | for | pin orientation | part no. | components layout | | |
|---|--|-----------------|---------------|-------------------|-------|---|
| PCB plug-in base 16.4 mm dia. x 9.8 mm high | Low Level switching element | axial | 31-940 | 2 | 0,002 |  |
| 17.8 mm dia. x 9.8 mm high | snap-action switching element 2.8 mm | axial | 31-942 | 4 | 0,002 | |
| 17.9 x 8.4 mm high | Low Level switching element With the extendable mounting the distance between PCB plug-in base and PCB can be varied up to 3mm. | right-angled | 31-941 | 3 | 0,004 | |

components layouts as of page 29

cable shoe

| | connection method | part no. |  | |
|------------|---------------------------------|---------------|---|---|
| cable shoe | plug-in terminal 2.8 x 0.5 mm | 31-946 | 0,001 |  |
| | universal terminal 2.0 x 0.5 mm | 31-945 | 0,001 | |

connection method: PT = plug-in terminal, UT = universal terminal

insulation socket

| | part no. |  | |
|--|---------------|---|---|
| insulation socket for connector 31-945 | 31-928 | 0,001 |  |
| for connector 31-946 | 31-929 | 0,001 | |
| for snap-action switching element 2.8 mm to cover the plug-in terminals | 01-928 | 0,001 | |

terminal cover

| | part no. |  | |
|----------------|---------------|---|--|
| terminal cover | 01-929 | 0,010 |  |

for illumination

incandescent lamp

| | voltage/current | part no. |  | |
|---------------------------------|--------------------------------|---------------------------------|---|---|
| incandescent lamp base T 5.5 | 6 AC/DC/200 mA | 10-1106.1369 (01-903.0) | 0,001 |  |
| | 12 AC/DC/100 mA | 10-1109.1329 (01-903.1) | 0,001 | |
| | 12 AC/DC/50 mA | 10-1109.1279 (01-913.12) | 0,001 | |
| | 24 AC/DC/25 mA | 10-1112.1199 (01-913.24) | 0,001 | |
| | 24 AC/DC/50 mA | 10-1112.1279 (01-903.2) | 0,001 | |
| | 28 AC/DC/40 mA | 10-1113.1249 (01-903.28) | 0,001 | |
| | 30 AC/DC/40 mA | 10-1114.1249 (01-903.3) | 0,001 | |
| | 36 AC/DC/35 mA | 10-1116.1229 (01-903.4) | 0,001 | |
| | 48 AC/DC/25 mA | 10-1119.1199 (01-903.5) | 0,001 | |
| 60 AC/DC/20 mA | 10-1120.1179 (01-903.6) | 0,001 | | |

LED

| | number of chips | voltage/current | colour | part no. |  | |
|--------------------------|-----------------|---------------------------------|--------|---------------------------------|---|---|
| LED base T 5.5 | 1 chip | 12 VDC/14 mA | white | 10-2109.3139 | 0,001 |  |
| | | 24 VDC/14 mA | white | 10-2112.3139 | 0,001 | |
| | | 28 VDC/14 mA | white | 10-2113.3139 | 0,001 | |
| | 6 chips | 6 VDC/45 mA | green | 10-5106.3255 (01-968.05) | 0,001 | |
| | | | red | 10-5106.3252 (01-968.02) | 0,001 | |
| | | | yellow | 10-5106.3254 (01-968.04) | 0,001 | |
| | | 12 VDC/30 mA | green | 10-5109.3205 (01-968.15) | 0,001 | |
| | | | red | 10-5109.3202 (01-968.12) | 0,001 | |
| | | | yellow | 10-5109.3204 (01-968.14) | 0,001 | |
| | | 24 VDC/15 mA | green | 10-5112.3145 (01-968.25) | 0,001 | |
| | | | red | 10-5112.3142 (01-968.22) | 0,001 | |
| | | | yellow | 10-5112.3144 (01-968.24) | 0,001 | |
| | | 28 VDC/15 mA | green | 10-5113.3145 (01-968.35) | 0,001 | |
| | | | red | 10-5113.3142 (01-968.32) | 0,001 | |
| | | | yellow | 10-5113.3144 (01-968.34) | 0,001 | |
| 48 VDC/14 mA | green | 10-5119.3135 (01-968.45) | 0,001 | | | |
| | red | 10-5119.3132 (01-968.42) | 0,001 | | | |
| | yellow | 10-5119.3134 (01-968.44) | 0,001 | | | |

capacitor

for lamp voltage reduction

| | value | part no. |  | |
|---|----------------------|-----------------|---|--|
| capacitor use with 60 VAC/20 mA, 50 Hz lamp voltage | 230 VAC/0.27 μ F | 02-917.0 | 0,004 |  |

Wire in accordance with local electrical safety regulations.

series resistor

for lamp voltage reduction

| | value | part no. |  | |
|---|-------------------|-----------------|---|---|
| series resistor use with 60 VAC/20 mA lamp rating | 110 V/2.7 kOhm | 02-904.0 | 0,003 |  |
| | 125 V/3.3 kOhm | 02-904.1 | 0,003 | |
| | 145 V/4.7 kOhm | 02-904.3 | 0,003 | |
| | 230-240 V/10 kOhm | 02-904.7 | 0,003 | |

Wire in accordance with local electrical safety regulations.

terminal plate empty

for fitting with series resistors and capacitors

| | no. of spaces | part no. |  | |
|-----------------------------|---------------|-----------------|---|---|
| terminal plate empty | 5 spaces | 02-912.1 | 0,015 |  |
| | 10 spaces | 02-912.2 | 0,045 | |
| | 15 spaces | 02-912.3 | 0,040 | |
| | 20 spaces | 02-912.4 | 0,045 | |

terminal plate with capacitor

| | value | no. of components | part no. |  | |
|---|-----------------------------|-------------------|------------------|---|---|
| terminal plate with capacitor use with 60 VAC/20 mA lamp rating | 0,27 μ F/230 VAC/60 VAC | 5 spaces | 02-914.10 | 0,045 |  |
| | | 10 spaces | 02-914.20 | 0,090 | |
| | | 15 spaces | 02-914.30 | 0,135 | |
| | | 20 spaces | 02-914.40 | 0,180 | |

Wire in accordance with local electrical safety regulations.

terminal plate with series resistor

| | value | no. of components | part no. |  | |
|---|----------------------|-------------------|------------------|---|---|
| terminal plate with series resistor use with 60 VAC/20 mA lamp rating | 2.7 kOhm/110/60 V | 5 spaces | 02-913.10 | 0,040 |  |
| | | 10 spaces | 02-913.20 | 0,075 | |
| | | 15 spaces | 02-913.30 | 0,115 | |
| | | 20 spaces | 02-913.40 | 0,155 | |
| | 3.3 kOhm/125/60 V | 5 spaces | 02-913.11 | 0,040 | |
| | | 10 spaces | 02-913.21 | 0,075 | |
| | | 15 spaces | 02-913.31 | 0,115 | |
| | | 20 spaces | 02-913.41 | 0,155 | |
| | 10 kOhm/230-240/60 V | 5 spaces | 02-913.17 | 0,040 | |
| | | 10 spaces | 02-913.27 | 0,075 | |
| | | 15 spaces | 02-913.37 | 0,115 | |
| | | 20 spaces | 02-913.47 | 0,155 | |



Wire in accordance with local electrical safety regulations.

assembling



lens remover

| | part no. |  | |
|---------------------|---------------|---|---|
| lens remover | 02-905 | 0,011 |  |

lamp remover

| | part no. |  | |
|---------------------|---------------|---|---|
| lamp remover | 02-906 | 0,002 |  |

LED remover

| | part no. |  | |
|--------------------|---------------|---|---|
| LED remover | 51-996 | 0,024 |  |

dressng tool

| | part no. |  kg | |
|--|---------------|--|---|
| dressng tool for alignng buttons | 01-906 | 0,030 |  |

mountng tool

| | part no. |  kg | |
|--|---------------|--|---|
| mountng tool for tightng (or loosng) fixing nuts | 01-907 | 0,020 |  |

actuator with snap-action switching element

switching system

Self-cleaning, double-break, snap action switching system. (with contact gap 2 x 0.5 mm).

1 normally closed or 1 normally open contact per element.
snap-action switching elements with soldering terminals at the sides: up to 4 switching element can be on a pushbutton (max. 4 normally closed and 4 normally open contacts).

snap-action switching element with axial plug-in terminals 2,8 mm not stachable, only 1 switching element can be on a pushbutton.

material

actuator case

polyphenylene PPO, self-extinguishing

material of contacts

gold-plated silver

switching element

axial plug-in-/soldering terminal 2.8 mm:
diallyl phthalate DAP, polyamide 66, polysulfone, heat-resistant and self-extinguishing
soldering terminal: PA 6.6 Ultramid

mechanical characteristics

actuating force

2-5.5 N, depending on the number of switching elements

actuating travel

3 mm

ambient air temperature

-25°C to +55°C

for indicators and illuminated pushbuttons mounted as a block , make sure the heat can escape freely
(as per DIN IEC 68-)

connection method

snap-action switching element with tinned soldering terminals at the sides:

max. wire diameter: 2 wires of 1.2 mm

max. wire cross-section of stranded cable: 1x 1 mm².

snap-action switching element with axial plug-in terminals, which can also be used as soldering terminals:

plug-in terminal: 2.8 x 0.5 mm

soldering terminal:

max. wire diameter: 2 wires of 1 mm²

max. wire cross-section of stranded cable: 2 x 0.75 mm² or 1 x 1.0 mm²

degree of protection

front as per IEC 529:

IP 40

IP 67 with spray cover

mechanical life

momentary action 2 million cycles of operation

maintained action 1 million cycles of operation

rebound time

<= 5ms

resistance to climate

standard condition as per IEC 68-2-3 and 2-30

changing condition as per IEC 68-2-14 and 2-33

resistance to shock

(single impacts, semi-sinusoidal)

15 g for 11 ms as per IEC 512-4-3, IEC 68-2-27

resistance to vibration

(sinusoidal)

10 g at 0-2000 Hz, amplitude 1.5 mm as per IEC 512-4-4, IEC 68-2-6

storage temperature

-40°C to + 85°C

(as per DIN IEC 68-)

electrical characteristics

continuous thermal current I_{th2}

5 A

The maximum current in continuous operation and at ambient temperature not exceeding the quoted maximum values.

electric strength

2500 VAC, 50 Hz, 1 min. between all terminals and earth, as per IEC 512-2-11.

protection class

II

rated current

5 A

rated voltage

250 VAC/VDC

switch rating

250 VAC/5 A (cos φ 1)

250 VAC/3 A (cos φ 0.3)

switch rating AC, cos φ 0,7:

voltage 125 V 250 V

current 3 A 2 A

switch rating DC (inductive), L:R = 30 ms:

voltage 24 V 60 V 110 V 220 V

current 2 A 0,7 A 0,2 A 0,1 A

volume resistance

starting value (initial) <= 50 mΩ

rules

IEC 1058 EN 61 058

approvals

- SEV 250 VAC/5A

- CSA 300 VAC

- UL

actuator with Low Level switching element

switching system

This low level switching element was designed for switching low powers in electronic circuits. The mechanism assures reliable switching of loads ranging from a few μA/μV up to 100 mA/42 VAC/ VDC.

Single-break momentary contact, as normally open or normally closed with 4 independent points of contact. 2 momentary contacts per switching element; combination of normally open and normally closed is possible.

Special features are the long life, extremely short rebound time and stable contact resistance.

material

actuator case

polyphenylene PPO, self-extinguishing

material of contacts

gold-plated

Technical Data

switching element

polysulfone, heat-resistant and self-extinguishing

mechanical characteristics

actuating force

3-3.5 N

actuating travel

3 mm

ambient air temperature

-25°C to +55°C

for indicators and illuminated pushbuttons mounted as a block ,
make sure the heat can escape freely
(as per DIN IEC 68-)

connection method

The universal terminals permit these units to be mounted on printed circuit boards (PCB). These terminals can also be used as soldering or plug-in terminals.

For these terminals we can also supply a plug-in base which, when soldered on to the board, enables the switch to be plugged in.

soldering terminal:

max. wire diameter: 2 wires à 0.8 mm

max. wire cross-section of stranded cable: 1x 0.75 mm²

plug-in terminal:

2.0 x 0.5 mm

degree of protection

front as per IEC 529:

IP 40

IP 67 with spray cover

mechanical life

momentary action 5 mio. cycles of operation

maintained action 1 mio. cycles of operation

rebound time

Typ. < 100 µs

resistance to climate

standard condition as per IEC 68-2-3 and 2-30

changing condition as per IEC 68-2-14 and 2-33

resistance to shock

(single impacts, semi-sinusoidal)

15 g for 11 ms as per IEC 512-4-3, IEC 68-2-27

storage temperature

-40°C to + 85°C

(as per DIN IEC 68-)

electrical characteristics

electric strength

2500 VAC, 50 Hz, 1 min. between all terminals and earth, as per IEC 512-2-11.

protection class

II

switch rating

10 µA/100 µV to 100 mA at 42 VAC/VDC

volume resistance

starting value (initial) <= 50 mΩ

rules

EN 61 058

technical drawing

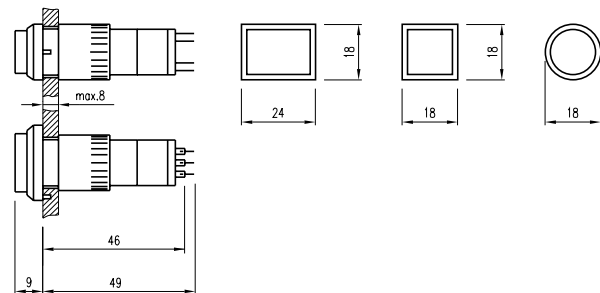
1 indicator

page 17



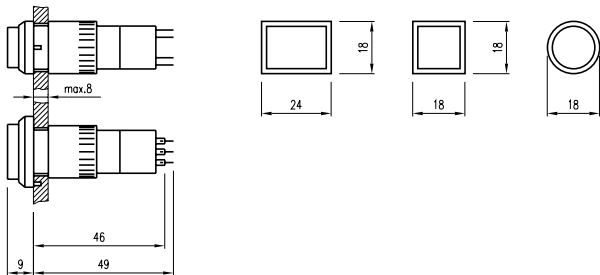
2 indicator

page 17



3 indicator, illuminated-/pushbutton

page 17, 18



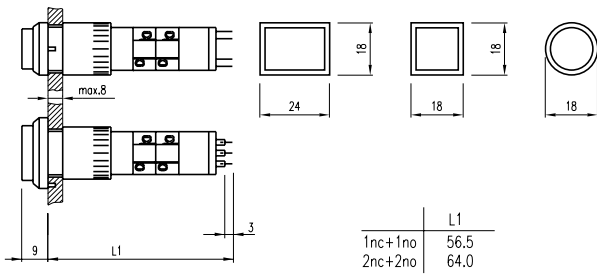
4 illuminated-/pushbutton

page 18



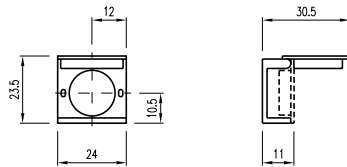
5 illuminated-/pushbutton

page 18



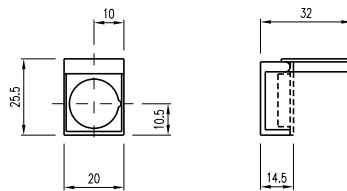
6 protective cover

page 19



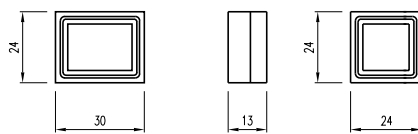
7 protective cover

page 19



8 sprayproof cover

page 19



9 protective guard

page 20



10 protective guard

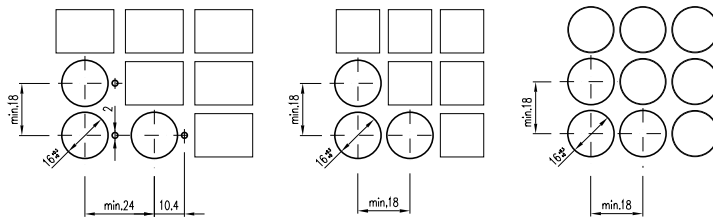
page 20



mounting dimension

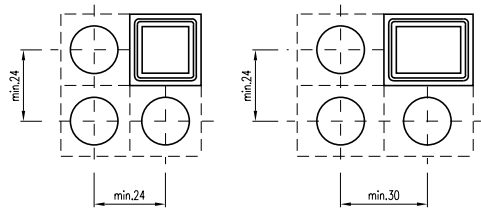
1 indicator, illuminated-/pushbutton, blind plug

page 17, 18, 20



2 sprayproof cover

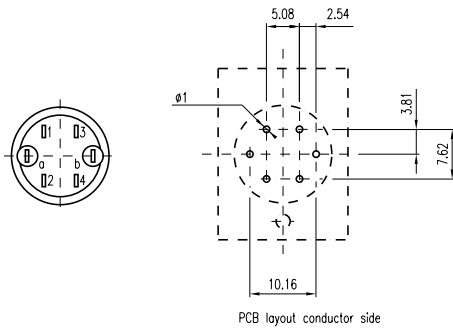
page 19



components layouts

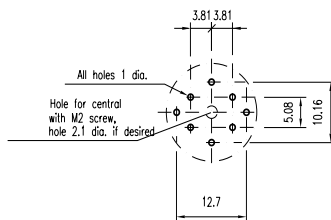
1 indicator, illuminated-/pushbutton

page 17, 18



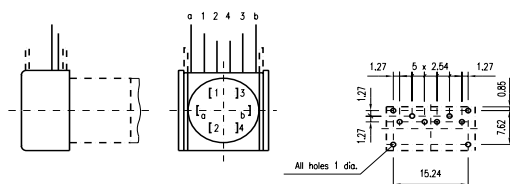
2 PCB plug-in base

page 20

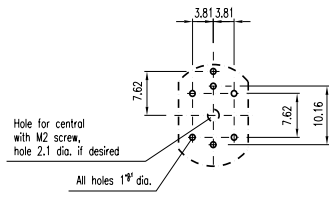


3 PCB plug-in base

page 20



4 PCB plug-in base page 20



| | circuit drawing |
|----|-----------------|
| 1 | |
| 2 | |
| 3 | |
| 4 | |
| 5 | |
| 6 | |
| 7 | |
| 8 | |
| 9 | |
| 10 | |
| 11 | |
| 12 | |
| 13 | |
| 14 | |
| 15 | |
| 16 | |
| 17 | |
| 18 | |
| 19 | |
| 20 | |

| | circuit drawing |
|----|-----------------|
| 21 | |
| 22 | |
| 23 | |
| 24 | |
| 25 | |
| 26 | |
| 27 | |
| 28 | |
| 29 | |
| 30 | |
| 31 | |
| 32 | |

With indicators and illuminated pushbuttons equipped with diodes, the user is able to perform a lamp check or wire an alarm circuit simply with a considerable saving of space.

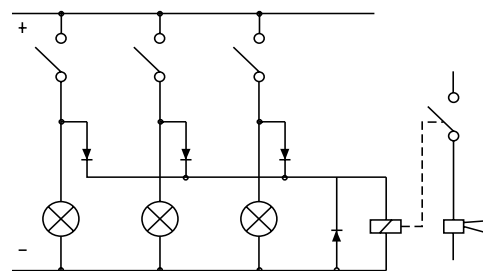
lamp check



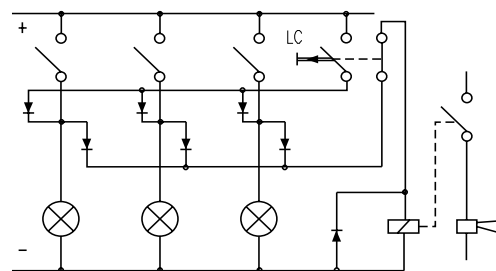
lamp check with blocking diodes



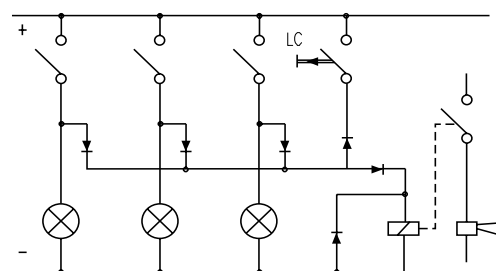
alarm circuit from fault
annunciating system



lamp check and alarm circuit



lamp check and alarm circuit with
only one diode and AC voltage



LC = lamp check

1. Engraving

Typefaces

In addition to the most commonly used world languages (see DIN 1451) with close spacing, the following typefaces are available: Scandinavian, Slavian, Greek, Russian.

Coloured filling of engraving

Specify whether engraving should be on the diffuser, or on the lens.
Specify the infill colour, character height and the text or symbol orientation.

Symbols

A list of the symbols available can be supplied on request.

2. Hot stamping

For large batches it is worth while to have the lettering produced by hot stamping.

Typefaces

For letters and figures, typefaces with 2,5 mm, 3 mm and 4 mm are available..

Symbols

A list of the symbols available can be supplied on request.



3. Film inserts

Instead of using engraving, the lenses can be fitted with transparent film inserts.

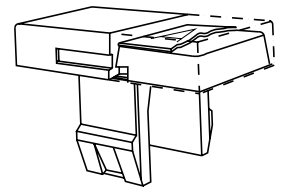
For this purpose, though, it is advisable to use transparent lenses. When a smoked lens is used, the lettering does not become visible until the lens lights.

To insert the film, the feet of the lens support have to be pushed together far enough to enable the lens to be lifted off easily.

Film dimensions

max. 10,2 x 16,2 mm
10,2 x 10,2 mm
12,8 mm

Film thickness 0,2 mm



Important!

Before engraving, check the position of the illuminated pushbuttons or indicator.

| Height of letters | Thickness of letters | Horizontal mounting | | | Vertical mounting | | | Number of lines | Number of letters per line | Number of letters per line | Number of lines | Number of letters per line | Number of letters per line |
|-------------------|----------------------|---------------------|---------|---------|-------------------|---------|--------|-----------------|----------------------------|----------------------------|-----------------|----------------------------|----------------------------|
| | | (caps) | (small) | (small) | (caps) | (small) | (caps) | | | | | | |
| h | s | | | | | | | | | | | | |
| 2,5 | 0,4 | 3 | 10 | 10-11 | 4 | 6-7 | 7 | 3 | 6 | 6 | 3 | 6-7 | 7 |
| 3 | 0,4 | 2 | 8-9 | 9 | 4 | 5-6 | 6 | 2 | 5 | 6 | 2 | 5-6 | 6 |
| 4 | 0,5 | 2 | 6 | 6-7 | 3 | 4 | 4 | 2 | 3 | 4 | 2 | 4 | 4 |
| 5 | 0,5 | 1 | 5 | 5-6 | 2 | 3 | 3-4 | 1 | 2 | 3 | 1 | 3 | 3-4 |
| 6 | 0,6 | 1 | 4 | 4-5 | 1 | 2-3 | 3 | 1 | 2 | 2 | 1 | 2-3 | 3 |
| 8 | 0,6 | 1 | 3 | 3-4 | 1 | 2 | 2 | 1 | 2 | 2 | 1 | 2 | 2 |

Данный компонент на территории Российской Федерации

Вы можете приобрести в компании MosChip.

Для оперативного оформления запроса Вам необходимо перейти по данной ссылке:

<http://moschip.ru/get-element>

Вы можете разместить у нас заказ для любого Вашего проекта, будь то серийное производство или разработка единичного прибора.

В нашем ассортименте представлены ведущие мировые производители активных и пассивных электронных компонентов.

Нашей специализацией является поставка электронной компонентной базы двойного назначения, продукции таких производителей как XILINX, Intel (ex.ALTERA), Vicor, Microchip, Texas Instruments, Analog Devices, Mini-Circuits, Amphenol, Glenair.

Сотрудничество с глобальными дистрибьюторами электронных компонентов, предоставляет возможность заказывать и получать с международных складов практически любой перечень компонентов в оптимальные для Вас сроки.

На всех этапах разработки и производства наши партнеры могут получить квалифицированную поддержку опытных инженеров.

Система менеджмента качества компании отвечает требованиям в соответствии с ГОСТ Р ИСО 9001, ГОСТ РВ 0015-002 и ЭС РД 009

Офис по работе с юридическими лицами:

105318, г.Москва, ул.Щербаковская д.3, офис 1107, 1118, ДЦ «Щербаковский»

Телефон: +7 495 668-12-70 (многоканальный)

Факс: +7 495 668-12-70 (доб.304)

E-mail: info@moschip.ru

Skype отдела продаж:

moschip.ru

moschip.ru_4

moschip.ru_6

moschip.ru_9