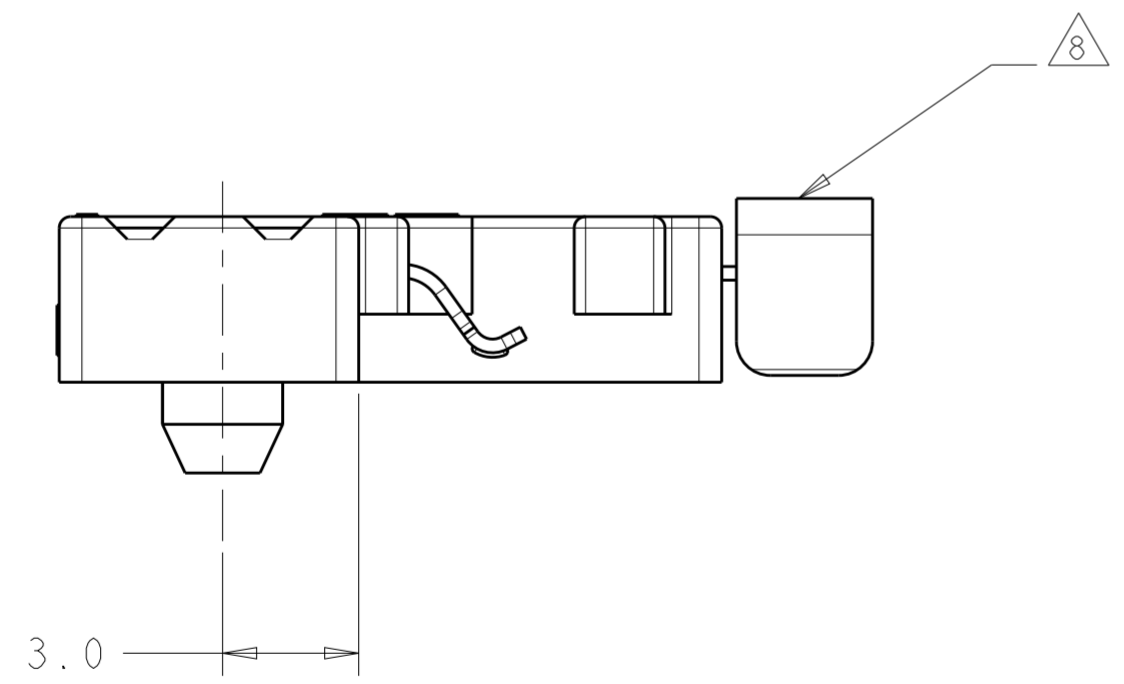
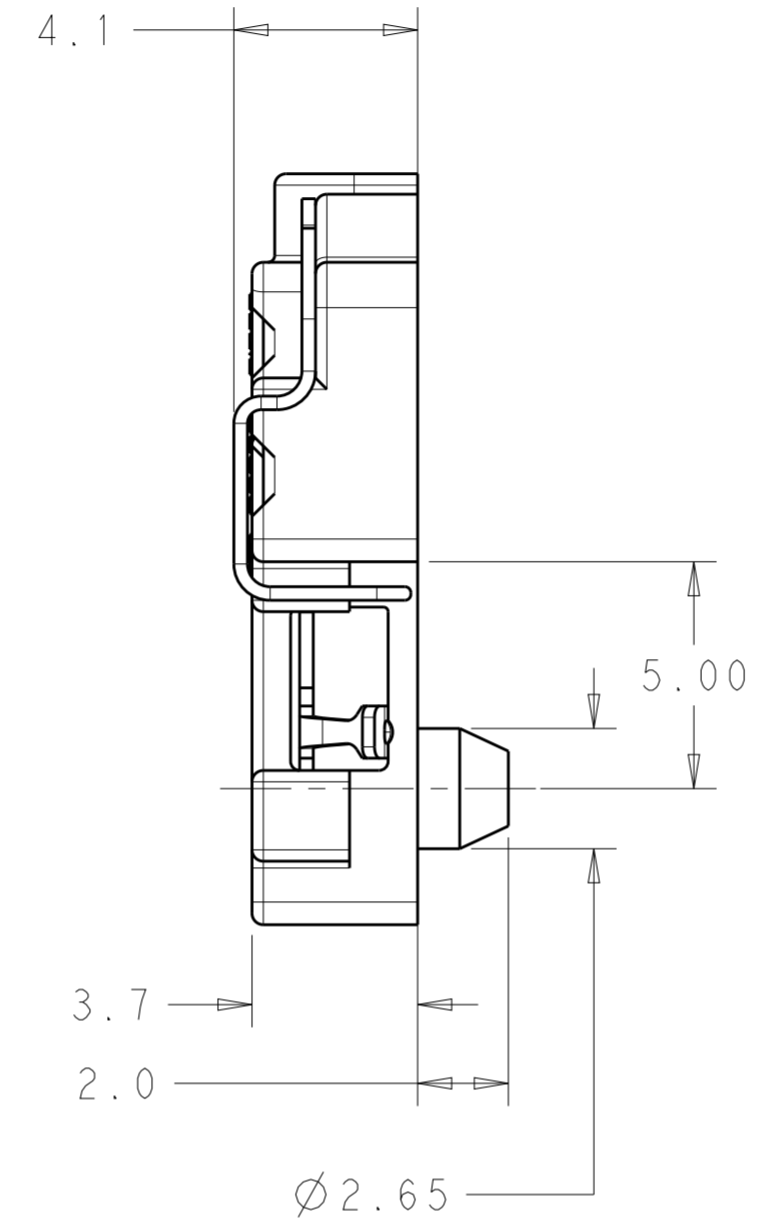
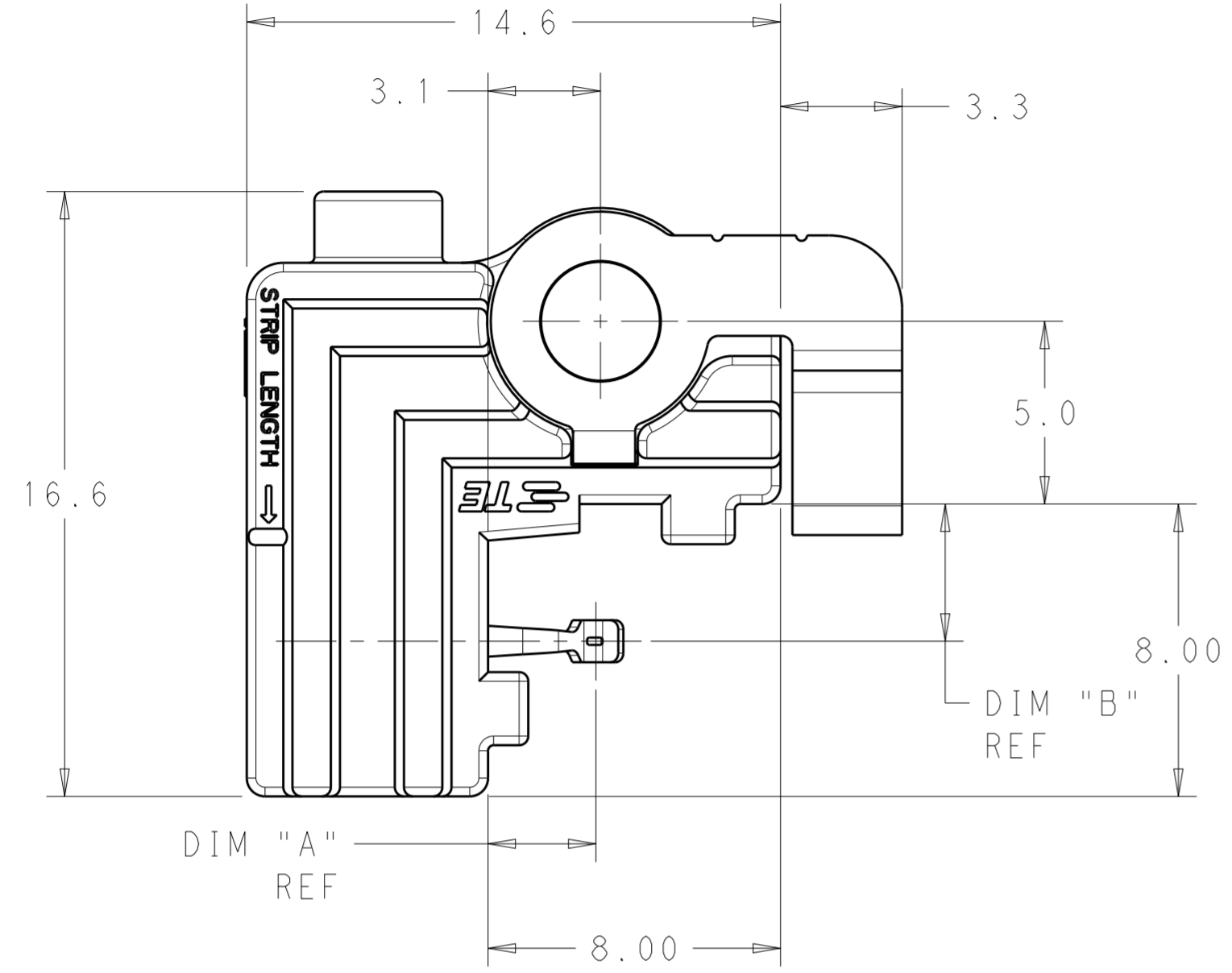


THIS DRAWING IS UNPUBLISHED. RELEASED FOR PUBLICATION 20
 © COPYRIGHT 20 BY - ALL RIGHTS RESERVED.

| LOC | | DIST | | REVISIONS | | | |
|-----|-----|------------------------------|-----------|-----------|------|--|--|
| P | LTR | DESCRIPTION | DATE | DWN | APVD | | |
| | 7 | ADD LEDS TO TABLE ON SHEET 2 | 13NOV2012 | MM | MM | | |
| | 8 | ADD LED INFO TO SHEET 2 | 22MAR2013 | MM | MM | | |



- 1 MATERIALS AND FINISH:
 - HOUSING: PBT-GF, COLOR: NATURAL
 - CONTACTS: COPPER ALLOY
 - FINISH: SEE TABLE
 - THERMAL SPRING: STAINLESS STEEL
- 2. MUST COMPLY WITH DIRECTIVE 2002/95/EC (ROHS)
- 3. THIS PRODUCT HAS NOT COMPLETED VALIDATION TESTING
- 4 REFER TO LED MANUFACTURER'S DATASHEET FOR LED DIMENSIONS
- 5. REFER TO LED DATASHEET FOR RECOMMENDED THERMAL INTERFACE MATERIALS
- 6. RECOMMENDED SCREW SIZE: M3 OR #4. TORQUE SCREWS TO 2.5 in-lbf TO 4.0 in-lbf
- 7. WIRE TYPES AND SIZES ACCEPTED
 - 18, 20 AND 22 AWG SOLID WIRE
 - 18 AND 20 AWG PREBOND STRANDED WIRE
 - 18 AWG STRANDED WIRE (16 STRAND COUNT)
 - MAX INSULATION OD: 2.10 MM
 - STRIP LENGTH: 7.5±1.0
- 8 IN APPLICATIONS WHERE THE LED SUBSTRATE IS LESS THAN 1.50MM THICK A THERMAL SPRING IS REQUIRED. AS NOTED IN THE TABLE THE THERMAL SPRINGS WILL BE INSTALLED PRIOR TO SHIPMENT FROM THE TE FACTORY.
- 9 REQUIRES THE USE OF LED WITH GOLD PLATED PADS

| | | | | |
|------------------|---------|---------|------------------|-------------|
| YES | 3.75 | 2.95 | TIN OVER NICKEL | 3-2154857-3 |
| YES | 3.75 | 2.95 | GOLD OVER NICKEL | 2-2154857-3 |
| YES | 2.25 | 2.00 | GOLD OVER NICKEL | 2-2154857-2 |
| YES | 1.85 | 1.55 | GOLD OVER NICKEL | 2-2154857-1 |
| NO | 3.75 | 2.95 | TIN OVER NICKEL | 1-2154857-3 |
| NO | 2.25 | 2.00 | TIN OVER NICKEL | 1-2154857-2 |
| 8 THERMAL SPRING | DIM "B" | DIM "A" | CONTACT PLATING | PART NUMBER |

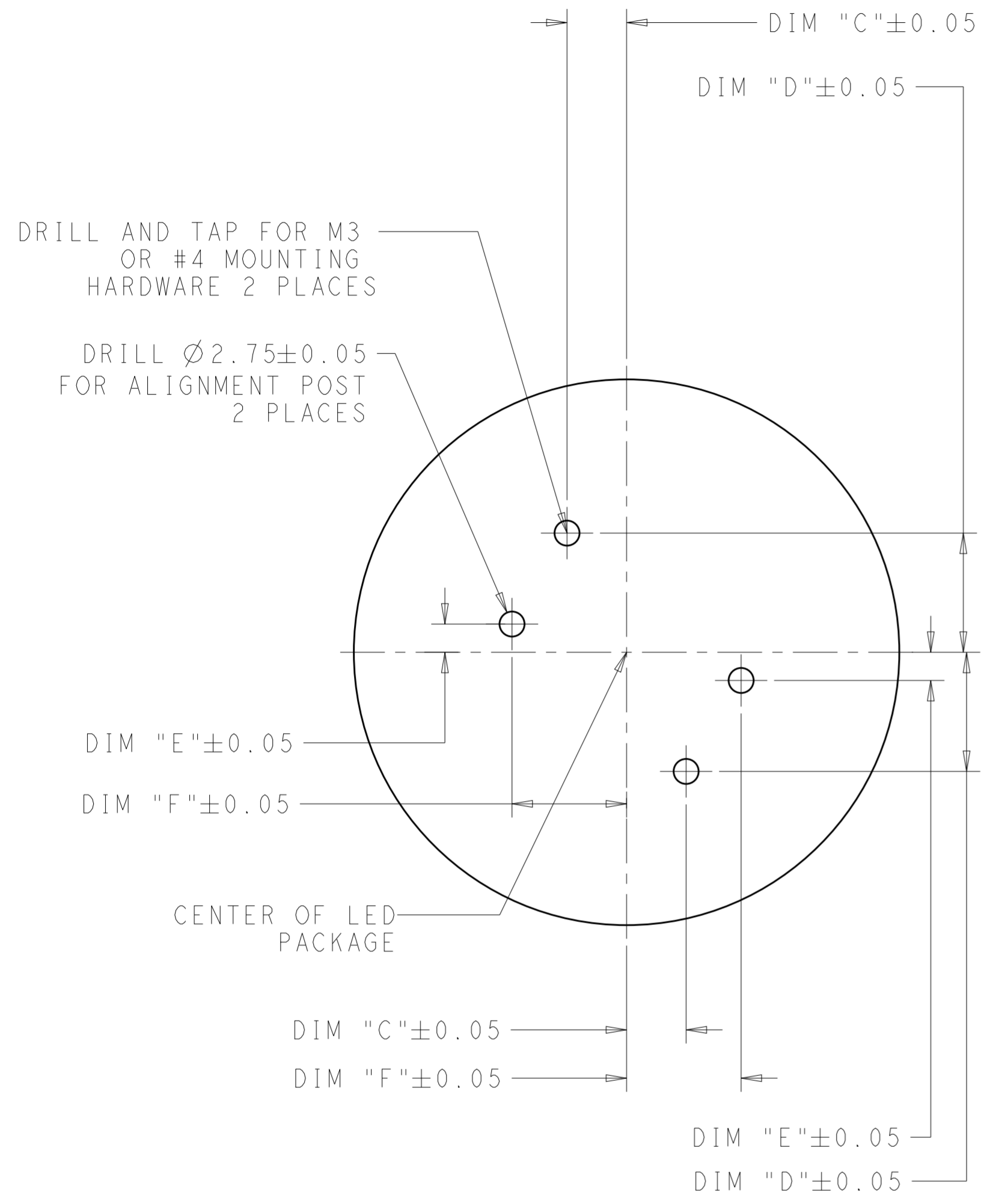
THIS PRINT IS
PRELIMINARY
 UNQUALIFIED PRODUCT
 CONTACT PRODUCT ENGINEERING
 BEFORE USING THIS PRINT

THIS DRAWING IS A CONTROLLED DOCUMENT.

| | | | |
|----------------|--|------------------------------|---|
| DIMENSIONS: mm | TOLERANCES UNLESS OTHERWISE SPECIFIED: | DWN: M. MOSTOLLER 16MAR2012 | TE Connectivity |
| | 0 PLC ± | CHK: M. MOSTOLLER 16MAR2012 | |
| | 1 PLC ±0.2 | APVD: M. MOSTOLLER 16MAR2012 | |
| | 2 PLC ±0.13 | PRODUCT SPEC: 108-133005 | |
| MATERIAL: | FINISH: | APPLICATION SPEC: 114-32043 | NAME: TWO PIECE ASSEMBLY SCALABLE LED SOCKET |
| | | WEIGHT: - | SIZE: A2 CAGE CODE: 00779 DRAWING NO: C-2154857 |
| | | CUSTOMER DRAWING | RESTRICTED TO: - |
| | | SCALE: 1:1 | SHEET 1 OF 2 REV 8 |

THIS DRAWING IS UNPUBLISHED. RELEASED FOR PUBLICATION 20
 © COPYRIGHT 20 BY - ALL RIGHTS RESERVED.

| LOC | | DIST | | REVISIONS | | | |
|-----|-----|-------------|------|-----------|------|--|--|
| P | LTR | DESCRIPTION | DATE | DWN | APVD | | |
| - | - | SEE SHEET 1 | - | - | - | | |



RECOMMENDED MOUNTING HOLE PATTERN

| LED TYPE | LED DIMENSION $\triangle 4$ | DIM "C" | DIM "D" | DIM "E" | DIM "F" | RECOMMENED SOCKET PART NUMBER |
|-----------------------------------|-----------------------------|---------|---------|---------|---------|-------------------------------|
| BRIDGELUX ES SERIES | 25.5 X 22.3 | 9.70 | 16.30 | 6.30 | 15.80 | 1-2154857-2 |
| BRIDGELUX LS SERIES | 17.5 X 13.3 | 5.83 | 11.83 | 1.83 | 11.93 | 1-2154857-3 |
| CITIZEN CLL020 SERIES | 13.5 X 13.5 | 3.80 | 11.90 | 1.90 | 9.90 | 2-2154857-1 |
| CITIZEN CLL030 SERIES | 19.0 X 19.0 | 6.55 | 14.65 | 4.65 | 12.65 | 2-2154857-1 |
| CITIZEN CLL040 SERIES | 28.0 X 28.0 | 11.05 | 19.15 | 9.15 | 17.15 | 2-2154857-2 |
| CITIZEN CLL050 SERIES | 38.0 X 38.0 | 16.05 | 24.15 | 14.15 | 22.15 | 2-2154857-2 |
| CITIZEN L330 | 28.0 X 19.0 | 11.05 | 14.65 | 4.65 | 17.15 | 2-2154857-3 |
| CITIZEN L340 | 28.5 X 28.5 | 11.30 | 19.40 | 9.40 | 17.40 | 2-2154857-3 |
| CREE CXA2011 | 22.0 X 22.0 | 8.05 | 16.15 | 6.15 | 14.15 | 1-2154857-3 |
| CREE CXA15XX | 15.85 X 15.85 | 4.98 | 13.08 | 3.08 | 11.08 | 2-2154857-2 |
| CREE CXA25XX | 23.85 X 23.85 | 8.98 | 17.08 | 7.08 | 15.08 | 2-2154857-2 |
| LG INNOTEK 10, 13, 17W LEMWM | 24.4 X 18.0 | 9.25 | 14.15 | 4.15 | 15.35 | 2-2154857-2 |
| NICHIA COB L SERIES | 19.0 X 16.0 | 6.55 | 13.15 | 3.15 | 12.65 | 2-2154857-1 |
| NICHIA COB-J360 | 24.0 X 19.0 | 9.05 | 14.65 | 4.65 | 15.15 | 2-2154857-1 |
| OSRAM GW KAJ | 30.0 X 30.0 | 12.05 | 20.15 | 10.15 | 18.15 | 3-2154857-3 |
| SHARP MINI-ZENIGATA $\triangle 9$ | 15.0 X 12.0 | 4.55 | 11.15 | 1.15 | 10.65 | 2-2154857-1 |
| SHARP MEGA-ZENIGATA $\triangle 9$ | 24.0 X 20.0 | 9.05 | 15.15 | 5.15 | 15.15 | 2-2154857-3 |
| SEOUL SEMI SBWW1F1A | 13.25 X 13.25 | 3.68 | 11.78 | 1.78 | 9.78 | 2-2154857-1 |
| SEOUL SEMI SBWW2F1A | 17.75 X 17.75 | 5.93 | 14.03 | 4.03 | 12.03 | 2-2154857-2 |

THIS PRINT IS
PRELIMINARY
 UNQUALIFIED PRODUCT
 CONTACT PRODUCT ENGINEERING
 BEFORE USING THIS PRINT

THIS DRAWING IS A CONTROLLED DOCUMENT.

| | | | |
|----------------|--|------------------------------|--|
| DIMENSIONS: mm | TOLERANCES UNLESS OTHERWISE SPECIFIED: | DWN: M. MOSTOLLER 16MAR2012 | TE Connectivity TWO PIECE ASSEMBLY SCALABLE LED SOCKET |
| 0 PLC ± | 1 PLC ±0.2 | CHK: M. MOSTOLLER 16MAR2012 | |
| 2 PLC ±0.13 | 3 PLC ±0.013 | APVD: M. MOSTOLLER 16MAR2012 | |
| 4 PLC ±0.0001 | ANGLES ±2 | | |
| MATERIAL | FINISH | PRODUCT SPEC: 108-133005 | NAME |
| | | APPLICATION SPEC: 114-32043 | SIZE: A2 |
| | | WEIGHT | CAGE CODE: 00779 |
| | | CUSTOMER DRAWING | DRAWING NO: C-2154857 |
| | | | RESTRICTED TO |
| | | SCALE: 2:1 | SHEET 2 OF 2 |
| | | | REV 8 |

Данный компонент на территории Российской Федерации

Вы можете приобрести в компании MosChip.

Для оперативного оформления запроса Вам необходимо перейти по данной ссылке:

<http://moschip.ru/get-element>

Вы можете разместить у нас заказ для любого Вашего проекта, будь то серийное производство или разработка единичного прибора.

В нашем ассортименте представлены ведущие мировые производители активных и пассивных электронных компонентов.

Нашей специализацией является поставка электронной компонентной базы двойного назначения, продукции таких производителей как XILINX, Intel (ex.ALTERA), Vicor, Microchip, Texas Instruments, Analog Devices, Mini-Circuits, Amphenol, Glenair.

Сотрудничество с глобальными дистрибьюторами электронных компонентов, предоставляет возможность заказывать и получать с международных складов практически любой перечень компонентов в оптимальные для Вас сроки.

На всех этапах разработки и производства наши партнеры могут получить квалифицированную поддержку опытных инженеров.

Система менеджмента качества компании отвечает требованиям в соответствии с ГОСТ Р ИСО 9001, ГОСТ РВ 0015-002 и ЭС РД 009

Офис по работе с юридическими лицами:

105318, г.Москва, ул.Щербаковская д.3, офис 1107, 1118, ДЦ «Щербаковский»

Телефон: +7 495 668-12-70 (многоканальный)

Факс: +7 495 668-12-70 (доб.304)

E-mail: info@moschip.ru

Skype отдела продаж:

moschip.ru

moschip.ru_4

moschip.ru_6

moschip.ru_9