



# TYT SERIES

# HIGH PERFORMANCE 3-PHASE, 4-WIRE FILTERS

## COMPONENTS

| PART NO. | Cx(μF) | Cx1(μF) | Cy(nF) | L(mH) | R(KΩ) | R1(KΩ) |
|----------|--------|---------|--------|-------|-------|--------|
| 16TYT8   | 0.68   | 1.0     | 15.0   | 1.2   | 220   | -      |
| 25TYT8   | 2.0    | 2.0     |        | 1.3   | 100   |        |
| 36TYT8   |        |         |        | 0.95  |       |        |
| 50TYT8   |        |         |        | 0.55  |       |        |
| 100TYT8  | 2.0    | 2.0     |        | 47.0  | 0.32  |        |
| 150TYS10 | 6.6    | 6.6     | 470    | 0.11  | 680   |        |

## INTRODUCTIONS

1. Applications: Electric equipment, UPS, machine tool, copy machine, automation equipment, robot, AC motor drive
2. Voltage rating: 480VAC
3. Operating frequency: 50/60Hz

## MINIMUM INSERTION LOSS IN dB

| COMMON MODE (L-G) IN 50 OHM SYSTEM       |               |     |     |     |    |    |  |
|--|---------------|-----|-----|-----|----|----|--|
| PART NO.                                 | FREQUENCY-MHz |     |     |     |    |    |  |
|  | .15           | .50 | 1.0 | 5.0 | 10 | 30 |  |
| 16TYT8                                   | 25            | 50  | 50  | 50  | 45 | 30 |  |
| 25TYT8                                   | 25            | 50  | 50  | 50  | 45 | 30 |  |
| 36TYT8                                   | 25            | 50  | 50  | 50  | 40 | 25 |  |
| 50TYT8                                   | 25            | 45  | 45  | 40  | 40 | 25 |  |
| 100TYT8                                  | 10            | 20  | 25  | 30  | 30 | 20 |  |
| 150TYS10                                 | 10            | 20  | 25  | 30  | 30 | 20 |  |
| DIFFERENTIAL MODE (L-L) IN 50 OHM SYSTEM |               |     |     |     |    |    |  |
| 16TYT8                                   | 35            | 55  | 60  | 60  | 40 | 30 |  |
| 25TYT8                                   | 35            | 55  | 60  | 60  | 40 | 30 |  |
| 36TYT8                                   | 30            | 50  | 55  | 50  | 40 | 30 |  |
| 50TYT8                                   | 30            | 50  | 50  | 40  | 40 | 30 |  |
| 100TYT8                                  | 30            | 40  | 40  | 35  | 35 | 25 |  |
| 150TYS10                                 | 30            | 40  | 40  | 35  | 35 | 35 |  |

## ELECTRICAL SCHEMATIC



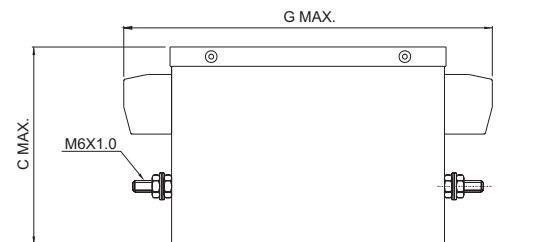
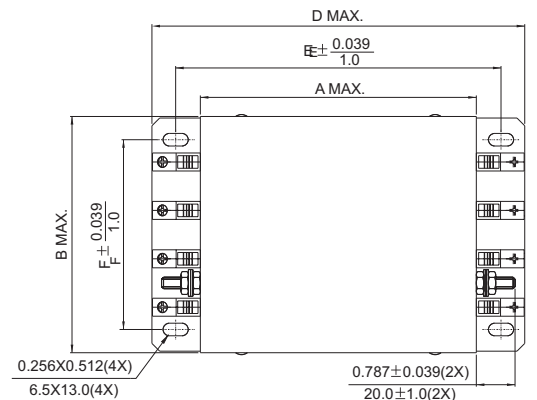
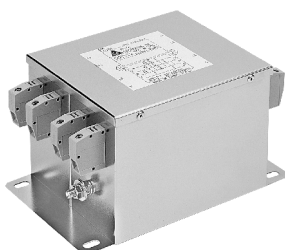
R1 : 680KΩ , FOR 150TYS10 ONLY

## SERIES DIMENSIONS

| PART NO.  | DIMENSIONS IN INCHES/mm |                |                |                |                |               |                |
|-----------|-------------------------|----------------|----------------|----------------|----------------|---------------|----------------|
|           | A                       | B              | C              | D              | E              | F             | G              |
| 16TYT8    | 5.591<br>142.0          | 4.213<br>107.0 | 3.228<br>82.0  | 7.539<br>191.5 | 6.516<br>165.5 | 196.9<br>50.0 | 7.559<br>192.0 |
| 25TYT8    |                         |                |                |                |                |               |                |
| 36TYT8    |                         |                |                |                |                |               |                |
| 50TYT8    | 5.689<br>144.5          | 4.882<br>124.0 | 4.094<br>104.0 | 7.638<br>194.0 | 6.614<br>168.0 | 3.858<br>98.0 | 7.638<br>194.0 |
| 100TYT8   | 8.346                   | 6.378          | 5.197          | 9.921          | 9.134          | 4.724         | 11.496         |
| *150TYS10 | 212.0                   | 62.0           | 132.0          | 252.0          | 232.0          | 120.0         | 292.0          |

\*Screw type

## MECHANICAL CONSTRUCTION



UNIT: INCH  
mm



**TYT** SERIES

# HIGH PERFORMANCE 3-PHASE 4-WIRE FILTERS



## INTRODUCTIONS

1. Applications: Electric equipment, UPS, machine tool, copy machine, automation equipment, robot, AC motor drive
2. Voltage rating: 520VAC
3. Operating frequency: 50/60Hz

## COMPONENTS

| PARTNO.   | L(mH) | Cx(uF) | Cy(uF) | R1 (Ω) | R2 (KΩ) |
|-----------|-------|--------|--------|--------|---------|
| 08TYT8-1  | 2.4   | 2.2    | 0.1    | 1.5M   | 680     |
| 16TYT8-1  | 1.7   |        |        |        |         |
| 25TYT8-1  | 1.6   | 4.7    | 0.147  | 330K   | 680     |
| 36TYT8-1  | 1.0   |        |        |        |         |
| 64TYT8-1  | 0.7   | 9.4    | 0.147  | 330K   | 680     |
| 80TYT8-1  | 0.55  |        |        |        |         |
| 120TYT8-1 | 0.55  | 13.6   | 0.147  | 330K   | 680     |
| 160TYT8-1 | 0.5   |        |        |        |         |

## ELECTRICAL SCHEMATIC



## SERIES DIMENSIONS

| PART NO.  | DIMENSIONS IN INCHES/mm |      |       |       |       |       |              |      |       |     |
|-----------|-------------------------|------|-------|-------|-------|-------|--------------|------|-------|-----|
|           | A                       | B    | C     | D     | E     | F     | G            | H    | I     | J   |
| 08TYT8-1  | 4.33                    | 0.45 | 3.15  | 3.72  | 4.33  | 2.76  | 0.98<br>25.0 | 0.47 | 3.23  | M6  |
| 16TYT8-1  | 110.0                   | 11.5 | 80.0  | 94.5  | 110.0 | 70.0  |              | 12.0 | 82.0  |     |
| 25TYT8-1  | 5.12                    | 0.96 | 3.54  | 4.02  | 4.65  | 3.35  | 0.98<br>25.0 | 0.55 | 3.54  | M10 |
| 36TYT8-1  | 130.0                   | 24.5 | 90.0  | 102.0 | 118.0 | 85.0  |              | 14.0 | 90.0  |     |
| 64TYT8-1  | 5.51                    | 1.52 | 3.94  | 5.02  | 5.63  | 4.53  | 1.57<br>40.0 | 0.71 | 4.53  | M10 |
| 80TYT8-1  | 140.0                   | 38.5 | 100.0 | 127.5 | 143.0 | 115.0 |              | 18.0 | 115.0 |     |
| 120TYT8-1 | 6.69                    | 1.69 | 4.72  | 5.81  | 6.42  | 4.92  | 1.73<br>44.0 | 0.69 | 5.51  | M10 |
| 160TYT8-1 | 170.0                   | 43.0 | 120.0 | 147.5 | 163.0 | 125.0 |              | 17.5 | 135.0 |     |
| 120TYT8-1 | 8.27                    | 1.95 | 6.3   | 6.04  | 6.69  | 5.12  | 2.17<br>55.0 | 0.65 | 6.3   | M10 |
| 160TYT8-1 | 210.0                   | 49.5 | 160.0 | 153.5 | 170.0 | 130.0 |              | 16.5 | 160.0 |     |
| 160TYT8-1 | 7.87                    | 1.95 | 5.91  | 6.81  | 7.48  | 5.12  | 2.17<br>55.0 | 0.65 | 6.3   | M10 |
| 160TYT8-1 | 200.0                   | 49.5 | 150.0 | 173.0 | 190.0 | 130.0 |              | 16.5 | 160.0 |     |

## MECHANICAL CONSTRUCTION





**TYT** SERIES

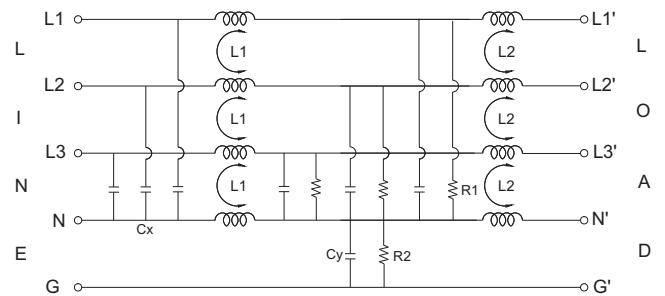
# HIGH PERFORMANCE 2-STAGE 3-PHASE 4-WIRE FILTERS



## INTRODUCTIONS

1. Applications: Electric equipment, UPS, machine tool, copy machine, automation equipment, robot, AC motor drive
2. Voltage rating: 520VAC
3. Operating frequency: 50/60Hz

## ELECTRICAL SCHEMATIC



## COMPONENTS

| PARTNO.   | L1(mH) | L2(uH) | Cx(uF) | Cy(uF) | R1(M Ω) | R2(KΩ) |
|-----------|--------|--------|--------|--------|---------|--------|
| 08TYT8-2  | 2.4    | 7.0    | 3.3    | 3.4    | 1.5     | 660.0  |
| 16TYT8-2  | 1.7    |        |        |        |         |        |
| 25TYT8-2  | 1.6    | 6.0    | 4.7    |        |         |        |
| 36TYT8-2  | 1.0    |        |        |        |         |        |
| 64TYT8-2  | 0.7    | 7.0    | 9.4    |        |         |        |
| 80TYT8-2  | 0.55   |        |        |        |         |        |
| 120TYT8-2 | 0.55   | 6.0    | 13.6   |        |         |        |
| 160TYT8-2 | 0.5    |        |        |        |         |        |

## SERIES DIMENSIONS

| PART NO.  | DIMENSIONS IN INCHES/mm |      |      |               |               |      |               |               |       |    |               |
|-----------|-------------------------|------|------|---------------|---------------|------|---------------|---------------|-------|----|---------------|
|           | A                       | B    | C    | D             | E             | F    | G             | H             | I     | J  |               |
| 08TYT8-2  | 4.72                    | 0.45 | 3.15 | 5.02          | 5.63          | 1.3  | 3.15          | 0.51<br>13.0  | 4.53  | M6 |               |
| 16TYT8-2  | 120.0                   | 11.5 | 80.0 | 127.5         | 143.0         | 33.0 | 80.0          |               | 115.0 |    |               |
| 25TYT8-2  | 5.12                    | 0.98 | 3.54 | 5.41<br>137.5 | 6.02<br>153.0 | 1.97 | 4.53          | 4.92<br>125.0 |       |    |               |
| 36TYT8-2  | 130.0                   | 25.0 | 90.0 |               |               | 50.0 | 115.0         |               |       |    |               |
| 64TYT8-2  | 6.3                     | 1.54 | 3.94 | 5.81<br>147.5 | 6.42<br>163.0 | 2.17 | 4.92<br>125.0 | 0.77          | M10   |    |               |
| 80TYT8-2  | 9.06                    | 1.73 | 4.72 |               |               | 1.77 |               | 45.0          |       |    | 19.5          |
| 120TYT8-2 | 9.84                    | 44.0 | 7.87 | 6.04<br>153.5 | 6.69<br>170.0 | 2.17 | 5.51          | 0.75<br>19.0  |       |    | 5.51<br>140.0 |
| 160TYT8-2 | 11.02                   | 2.0  | 9.06 |               |               | 1.97 | 50.0          |               |       |    |               |

## MECHANICAL CONSTRUCTION



UNIT:  $\frac{\text{INCH}}{\text{mm}}$

## Данный компонент на территории Российской Федерации

### Вы можете приобрести в компании MosChip.

Для оперативного оформления запроса Вам необходимо перейти по данной ссылке:

<http://moschip.ru/get-element>

Вы можете разместить у нас заказ для любого Вашего проекта, будь то серийное производство или разработка единичного прибора.

В нашем ассортименте представлены ведущие мировые производители активных и пассивных электронных компонентов.

Нашей специализацией является поставка электронной компонентной базы двойного назначения, продукции таких производителей как XILINX, Intel (ex.ALTERA), Vicor, Microchip, Texas Instruments, Analog Devices, Mini-Circuits, Amphenol, Glenair.

Сотрудничество с глобальными дистрибьюторами электронных компонентов, предоставляет возможность заказывать и получать с международных складов практически любой перечень компонентов в оптимальные для Вас сроки.

На всех этапах разработки и производства наши партнеры могут получить квалифицированную поддержку опытных инженеров.

Система менеджмента качества компании отвечает требованиям в соответствии с ГОСТ Р ИСО 9001, ГОСТ РВ 0015-002 и ЭС РД 009

### Офис по работе с юридическими лицами:

105318, г.Москва, ул.Щербаковская д.3, офис 1107, 1118, ДЦ «Щербаковский»

Телефон: +7 495 668-12-70 (многоканальный)

Факс: +7 495 668-12-70 (доб.304)

E-mail: [info@moschip.ru](mailto:info@moschip.ru)

Skype отдела продаж:

moschip.ru

moschip.ru\_4

moschip.ru\_6

moschip.ru\_9