

for Non-Fusible Disconnect Switches

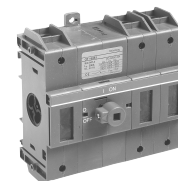
CDNF16 – CDFN160



CDNF16 CDFN25 CDFN32



CDNF30 CDFN60 CDFN100



CDNF160

| Catalog number | 3 pole | CDNF16 | CDNF25 | CDNF32 | CDNF45 | CDNF63 | CDNF30 | CDNF60 | CDNF100 | CDNF160 |
|----------------------------------------------------------------------|-------------|-----------|-----------|-----------|-----------|-----------|-----------|-----------|------------|------------|
| General purpose amp rating | A | 16 | 25 | 40 | 60 | 80 | 30 | 60 | 100 | 125 |
| Approvals ^① | | | | | | | | | | |
| | 2 pole | N/A | N/A | N/A | N/A | N/A | N/A | N/A | N/A | UL98 |
| | 3 pole | UL508 | UL508 | UL508 | UL508 | UL508 | UL98 | UL98 | UL98 | UL98 |
| | 4 pole | UL508 | UL508 | UL508 | UL508 | UL508 | UL98 | UL98 | UL98 | UL98 |
| Technical ratings | | | | | | | | | | |
| UL, CSA^② | | | | | | | | | | |
| Max operating voltage | V | 600 | 600 | 600 | 600 | 600 | 600 | 600 | 600 | 600 |
| Max horsepower rating | | | | | | | | | | |
| Three phase | | | | | | | | | | |
| 200 – 208V | HP | 3 | 7.5 | 10 | 15 | 20 | 10 | 20 | 25 | — |
| 240V | HP | 5 | 7.5 | 10 | 15 | 20 | 10 | 20 | 25 | 30 |
| 480V | HP | 10 | 15 | 20 | 30 | 40 | 20 | 40 | 50 | 60 |
| 600V | HP | 10 | 20 | 25 | 20 | 40 | 30 | 40 | 40 | 75 |
| Single phase | | | | | | | | | | |
| 120V | HP | 1/2 | 3/4 | 1 | 2 | 2 | 2 | 3 | 5 | 7.5 |
| 240V | HP | 1.5 | 2 | 3 | 5 | 5 | 5 | 7.5 | 15 | 20 |
| Technical ratings | | | | | | | | | | |
| IEC^③ | | | | | | | | | | |
| Rated insulation and operational voltage. AC20 and DC20 ^④ | V | 750 | 750 | 750 | 750 | 750 | 750 | 750 | 750 | 750 |
| Rated thermal current, I _{th} | | | | | | | | | | |
| AC 20/DC 20 open | A | 25 | 32 | 40 | 63 | 80 | 40 | 63 | 115 | 200 |
| AC 20/DC 20 enclosed | A | 25 | 32 | 40 | 63 | 80 | 40 | 63 | 115 | 160 |
| AC 21A 500V | A | 16 | 25 | 32 | 63 | 80 | 40 | 63 | 100 | 160 |
| 690V | A | 16 | 25 | 32 | 63 | 80 | 40 | 63 | 100 | 160 |
| Rated operational power AC23 | | | | | | | | | | |
| 400/415V | kW | 7.5 | 9 | 11 | 22 | 37 | 15 | 18.5 | 37 | 75 |
| 690V | kW | 7.5 | 9 | 11 | 15 | 18.5 | 15 | 15 | 37 | 75 |
| Physical characteristics | | | | | | | | | | |
| Weight ^④ | 3 pole lb | 0.24 | 0.24 | 0.24 | 0.59 | 0.59 | 0.79 | 0.79 | 0.79 | 2.42 |
| Dimension | 3 pole H in | 2.68 | 2.68 | 2.68 | 3.60 | 3.60 | 3.94 | 3.94 | 3.94 | 5.00 |
| | W in | 1.38 | 1.38 | 1.38 | 2.07 | 2.07 | 2.76 | 2.76 | 2.76 | 4.96 |
| | D in | 2.20 | 2.20 | 2.20 | 2.85 | 2.85 | 2.95 | 2.95 | 2.95 | 2.93 |
| Accessories | | | | | | | | | | |
| Terminal lug kit | | Integral | Integral | Integral | Integral | Integral | Integral | Integral | Integral | integral |
| Terminal shroud | | • | • | • | • | • | • | • | • | • |
| Auxiliary contact | | • | • | • | • | • | • | • | • | • |
| Handle UL/NEMA type | | | | | | | | | | |
| Type 1, 3R, 12 | | • | • | • | • | • | • | • | • | • |
| Type 1, 3R, 4, 4X, 12 | | • | • | • | • | • | • | • | • | • |
| Handle type | | | | | | | | | | |
| Selector | | • | • | • | • | • | — | • | • | • |
| Pistol | | • | • | • | • | • | • | • | • | • |
| Conversion kits | | | | | | | | | | |
| 6 pole | | • | • | • | • | • | • | • | • | • |
| Transfer | | • | • | • | • | • | • | • | • | • |
| Bypass | | • | • | • | • | • | • | • | • | • |
| Mechanical interlock | | • | • | • | • | • | • | • | • | • |
| Electrical interlock | | — | — | — | — | — | — | — | — | — |

• = Available
 — = Not available

UL listed, CSA approved, IEC rated, CE marked

- ① UL listed switches are also CSA approved.
- ② For complete technical information please see page 58 & 59.
- ③ 1000V, IEC 408.
- ④ Switch only

Fusible

Non-Fused

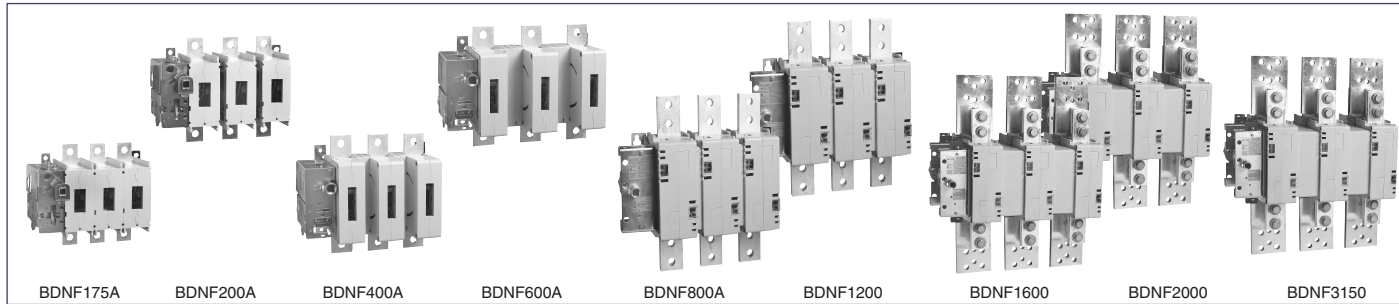
Enclosed Fused

Enclosed Non-Fused

for Non-Fusible Disconnect Switches

BDNF200A – BDNF3150

Fusible



Non-Fused

Enclosed Fused

Enclosed Non-Fused

| Catalog number | 3 pole | BDNF175A | BDNF200A | BDNF400 | BDNF600A | BDNF800A | BDNF1200 | BDNF1600 | BDNF2000 | BDNF3150 |
|----------------------------------------------------------------------|----------------------------|-----------------------------------|---------------------------------|----------------------------------------|----------------------------------------|---------------------------------|---------------------------------|---------------------------------|---------------------------------|-------------------|
| General purpose amp rating | A | 175 | 200 | 400 | 600 | 800 | 1200 | 1600 | 2000 | 3150 |
| Approvals^① | 2 pole 3 pole 4 pole | UL508 & IEC UL508 & IEC IEC | UL98 & IEC UL98 & IEC IEC | UL98 & IEC UL98 & IEC UL98 & IEC | UL98 & IEC UL98 & IEC UL98 & IEC | UL98 & IEC UL98 & IEC IEC | UL98 & IEC UL98 & IEC IEC | UL98 & IEC UL98 & IEC IEC | UL98 & IEC UL98 & IEC IEC | IEC IEC IEC |
| Technical ratings UL, CSA^② | | | | | | | | | | |
| Max operating voltage | V | 600 | 600 | 600 | 600 | 600 | 600 | 600 | 600 | 600 |
| Max horsepower rating | | | | | | | | | | |
| Three phase | | | | | | | | | | |
| 200 – 208V | HP | 30 | 60 | 100 | 150 | 200 | — | — | — | — |
| 240V | HP | 40 | 75 | 125 | 200 | 250 | — | — | — | — |
| 480V | HP | 75 | 150 | 250 | 400 | 500 | — | — | — | — |
| 600V | HP | 100 | 200 | 350 | 500 | 600 | — | — | — | — |
| Single phase | | | | | | | | | | |
| 120V | HP | — | — | — | — | — | — | — | — | — |
| 240V | HP | — | — | — | — | — | — | — | — | — |
| Technical ratings IEC^② | | | | | | | | | | |
| Rated insulation and operational voltage, AC20 and DC20 ^③ | V | 1000 | 1000 | 1000 | 1000 | 1000 | 1000 | 1000 | 1000 | 1000 |
| Rated thermal current, I _m | | | | | | | | | | |
| AC 20/DC 20 open | A | 200 | 315 | 630 | 800 | 1250 | 1600 | 2500 | 2500 | 3150 |
| AC 20/DC 20 enclosed | A | 200 | 270 | 630 | 720 | 1250 | 1600 | 2300 | 2300 | 2600 |
| AC 21A 500V | A | 200 | 250 | 630 | 800 | 1250 | 1600 | 2500 | 2500 | 3150 |
| AC 21A 690V | A | 200 | 250 | 630 | 800 | 1250 | 1600 | 2500 | 2500 | 3150 |
| Rated operational power AC23 | | | | | | | | | | |
| 400/415V | kW | 90 | 132 | 315 | 355 | 400 | 400 | 400 | 400 | 400 |
| 690V | kW | 170 | 200 | 355 | 355 | — | — | — | — | — |
| Physical characteristics | | | | | | | | | | |
| Weight ^④ | 3 pole lb | 6.61 | 6.61 | 13.66 | 13.66 | 35.9 | 38.55 | 127.7 | 127.7 | 127.7 |
| Dimension | 3 pole H in | 8.35 | 8.35 | 11.81 | 11.77 | 19.09 | 19.09 | 25.04 | 25.04 | 25.04 |
| | W in | 7.83 | 8.62 | 10.24 | 11.93 | 14.29 | 14.29 | 18.43 | 18.43 | 18.43 |
| | D in | 4.55 | 4.55 | 5.12 | 5.12 | 4.92 | 4.92 | 10.67 | 10.67 | 10.67 |
| Accessories | | | | | | | | | | |
| Terminal lug kit | | BDTL25 | BDTL25 | BDTL26 | BDTL27 | BDTL30 | BDTL28 | BDTL28 | BDTL28/2 | BDTL28/2 |
| Terminal shroud | | • | • | • | • | • | • | — | — | — |
| Auxiliary contact | | • | • | • | • | • | • | • | • | • |
| Handle UL/NEMA type | | | | | | | | | | |
| Type 1, 3R, 12 | | • | • | • | • | • | • | • | • | • |
| Type 1, 3R, 4, 4X, 12 | | • | • | • | • | • | • | • | • | • |
| Handle type | | | | | | | | | | |
| Selector | | — | — | — | — | — | — | — | — | — |
| Pistol | | • | • | • | • | • | • | • | • | • |
| Conversion kits | | | | | | | | | | |
| 6 pole | | • | • | • | • | • | • | — | — | — |
| Transfer | | • | • | • | • | • | • | — | — | — |
| Bypass | | • | • | • | • | • | • | — | — | — |
| Mechanical interlock | | • | • | • | • | • | • | • | • | • |
| Electrical interlock | | • | • | • | • | • | • | • | • | • |

S = Standard feature
 • = Available
 — = Not available

UL listed, CSA approved, IEC rated, CE marked

① UL listed switches are also CSA approved.
 ② For complete technical information please see page 58 & 59.
 ③ 1000V, IEC 408.
 ④ Switch only

Данный компонент на территории Российской Федерации

Вы можете приобрести в компании MosChip.

Для оперативного оформления запроса Вам необходимо перейти по данной ссылке:

<http://moschip.ru/get-element>

Вы можете разместить у нас заказ для любого Вашего проекта, будь то серийное производство или разработка единичного прибора.

В нашем ассортименте представлены ведущие мировые производители активных и пассивных электронных компонентов.

Нашей специализацией является поставка электронной компонентной базы двойного назначения, продукции таких производителей как XILINX, Intel (ex.ALTERA), Vicor, Microchip, Texas Instruments, Analog Devices, Mini-Circuits, Amphenol, Glenair.

Сотрудничество с глобальными дистрибьюторами электронных компонентов, предоставляет возможность заказывать и получать с международных складов практически любой перечень компонентов в оптимальные для Вас сроки.

На всех этапах разработки и производства наши партнеры могут получить квалифицированную поддержку опытных инженеров.

Система менеджмента качества компании отвечает требованиям в соответствии с ГОСТ Р ИСО 9001, ГОСТ РВ 0015-002 и ЭС РД 009

Офис по работе с юридическими лицами:

105318, г.Москва, ул.Щербаковская д.3, офис 1107, 1118, ДЦ «Щербаковский»

Телефон: +7 495 668-12-70 (многоканальный)

Факс: +7 495 668-12-70 (доб.304)

E-mail: info@moschip.ru

Skype отдела продаж:

moschip.ru

moschip.ru_4

moschip.ru_6

moschip.ru_9