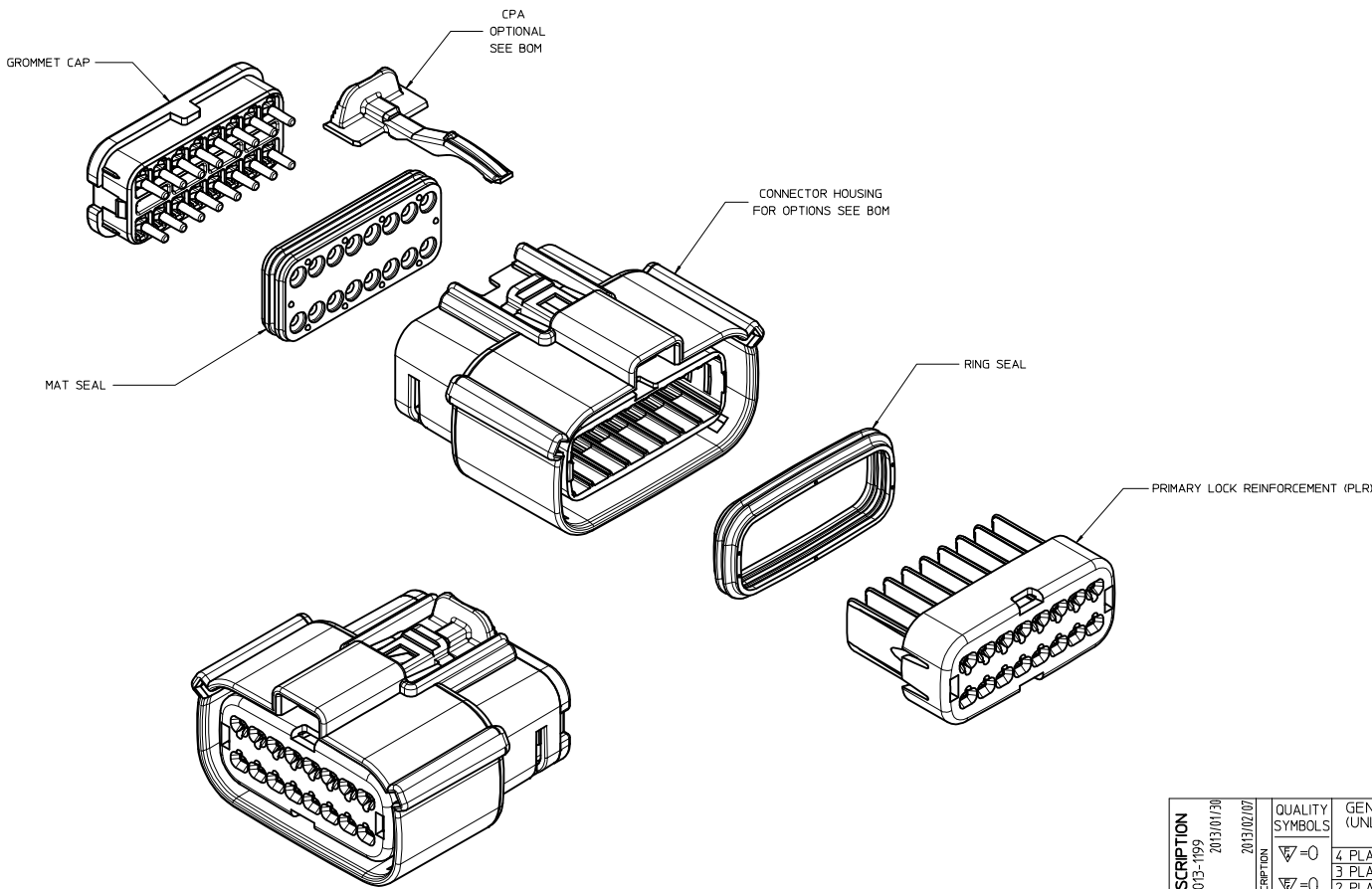




TABLE OF CONTENTS	
SHEET NO.	SHEET DESCRIPTION
1	NOTES
2	KEY CONFIGURATIONS
3	RECEPTACLE SEALED ASSEMBLY
4-6	BOM



NOTES: VALID UNLESS OTHERWISE SPECIFIED

- 1. GENERAL:**  
**a. APPLICATION SPECIFICATION SEE: AS-33472-100**  
 -CONTAINS: PRODUCT INTRODUCTION, PRODUCT SUMMARY, CONNECTOR ASSEMBLY, PACKAGING INFORMATION, CONNECTOR MATING, SERVICE INSTRUCTIONS, ELECTRICAL CONTINUITY CHECKING, CRIMPING, AND TROUBLESHOOTING.  
 -DESIGNED TO MATE WITH DEVICE CONNECTION AS SPECIFIED IN DRAWING ENCAP 150-S-016-2-201, AVAILABLE AT <http://www.molex.com>  
 -DESIGNED TO MATE WITH BLADE SEALED ASSEMBLY AS SPECIFIED IN DRAWING SD-33482-161  
 -FOR 15mm RECEPTACLE TERMINALS TO BE USED WITH THIS ASSEMBLY SEE MOLEX DRAWING SD-33012-002.  
 -SYSTEM TO BE USED WITH WIRE WITHIN DIAMETER RANGE OF 1.2 mm TO 2.69 mm.  
 -ASSEMBLY SHIPPED WITH PLR AND CPA IN PRE-LOCK POSITION (SEE SECTION Z-Z PRE-LOCK).  
 -IN THE EVENT THAT THE PLR IS FOUND IN THE SEATED (FINAL LOCK) POSITION, REFER TO MOLEX SPECIFICATION PS-34646-001, AVAILABLE AT www.molex.com <http://www.molex.com>  
 -ASSEMBLY CONFORMS TO SAE/USCAR-2 REV.4 WITH THE FOLLOWING EXCEPTIONS:  
 -ENGAGEMENT FORCE TO MOVE CPA FROM PRE-LOCK TO FINAL LOCK POSITION WHEN UNMATED: 40N MIN.  
 -DISENGAGEMENT FORCE TO MOVE CPA FROM FINAL LOCK TO PRE-LOCK POSITION: 3N MIN, 40N MAX.  
 -TERMINAL INSERTION FORCE FOR WIRE DIAMETER ABOVE 2.5mm NOT EXCEEDING 2.69mm SHALL NOT EXCEED 40 NEWTONS.  
**b. PRODUCT SPECIFICATION SEE: PS-33472-000**  
 -CONTAINS: PRODUCT INTRODUCTION, PRODUCT SUMMARY, RATINGS (CURRENT, TEMPERATURE, SEALING, AND FLAMMABILITY), AND PRODUCT VALIDATION.  
**c. PACKAGING SPECIFICATION PER MOLEX DRAWING: PK-31800-903**  
**d. PARTS MUST BE IN COMPLIANCE TO MOLEX CHEMICAL SUBSTANCES FOR PRODUCTS AND PACKAGING SPECIFICATION: ES-40000-5016**  
**e. DATA MUST BE SUBMITTED UNDER THE MOLEX PART NUMBER TO IMDS (COMPANY ID#13255)**  
**2. DESIGN - MATERIALS:**  
**a. CONNECTOR HOUSING, GROMMET CAP, PRIMARY LOCK REINFORCER (PLR):**  
 -SPS/NYLON BLEND, 20% GLASS FILLED  
**b. MAT SEAL, RING SEAL: INHERENTLY LUBRICATED SILICONE**  
**c. CPA: PBT 20% GLASS FILLED**  
**3. DESIGN - GEOMETRY:**  
**a. THIS IS A 100% CAD GENERATED PART. THE CAD MATHEMATICAL DATA IS THE MASTER FOR THIS PART. FOR DIMENSIONAL OR ANY INFORMATION NOT SHOWN ON THIS DRAWING, ANALYZE THE CAD MODEL.**  
**b. GEOMETRIC DIMENSIONS AND TOLERANCES PER ASME Y14.5M - 1994**  
**c. EDGES AND UNDIMENSIONED DETAILS PER ISO13715**  
**d. CORNERS SHOWN AS SHARP TO BE R 0.2 MAX.**  
**e. LETTERING SHALL BE 0.15 MAX RAISED IN 0.25 MAX RECESS PAD. THIS INCLUDES RECYCLING CODE, CAVITY ID, VENDOR IDENTIFICATION, AND CUSTOMER MATERIAL NUMBER.**  
**f. VISUAL DEFECTS SHALL MEET COSMETIC STANDARD PS-45499-002 (Class B)**  
**g. LASER MARKING: TBD**

INSPECTION NUMBER LOG  
 LAST NUMBER USED:  
 ADDED:  
 REMOVED:

AS8	ADDED PIN OUT	33472-1826	33472-1827	33472-1828	33472-1829	33472-1830	33472-1831
AS8	ADDED PIN OUT	33472-1818	33472-1819	33472-1820	33472-1821	33472-1822	33472-1823
AS7	UPDATED DIMENSIONS TO MATCH MODEL	33472-1824	33472-1825	33472-1811	33472-1812	33472-1813	33472-1814
AS6	ADDED PIN OUT	33472-1815	33472-1816	33472-1817	33472-1818	33472-1819	33472-1820
AS5	ADDED PIN OUT	33472-1806	33472-1807	33472-1808	33472-1809	33472-1810	
REV	DESCRIPTION						

<b>ENTER DESCRIPTION</b> EEC NO: UAU2013-1199 DRAWN BY: A39 CHKD: APPR: VKOSHY DATE: 2013/01/30 DESCRIPTION: 2013/02/07	QUALITY SYMBOLS	GENERAL TOLERANCES (UNLESS SPECIFIED)	DIMENSION STYLE	SCALE	DESIGN UNITS	THIRD ANGLE PROJECTION
	▽=0	4 PLACES ± mm INCH	MM ONLY	3:1	METRIC	☉ □
	▽=0	3 PLACES ± 0.10	DGR1FF1THS 05-29-03			
	▽=0	2 PLACES ± 0.3	DGR1FF1THS 05-29-03			
		ANGULAR ± 3 °	DRAWN BY DATE			
		DRAFT WHERE APPLICABLE MUST REMAIN WITHIN DIMENSIONS	CHECKED BY DATE			
			APPROVED BY DATE			
			VKOSHY 2010/10/27			
			MATERIAL NO.	DOCUMENT NO.		
			SEE BOM	SD-33472-161		
			SIZE			
			D			

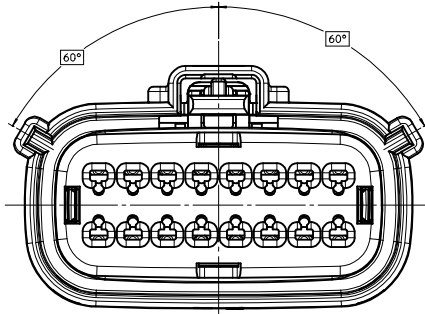
MX150 2X8 RECEPTACLE SEALED ASSEMBLY MAT SEAL

**molex**

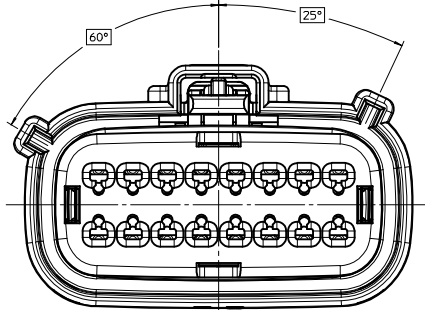
SD-33472-161

SHEET NO. 1 OF 7

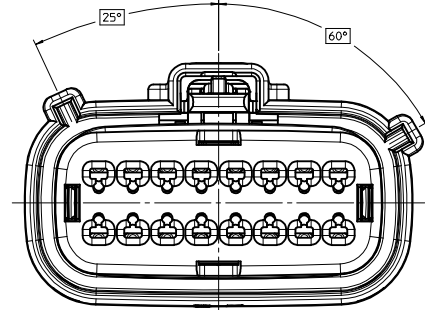
KEY CONFIGURATIONS



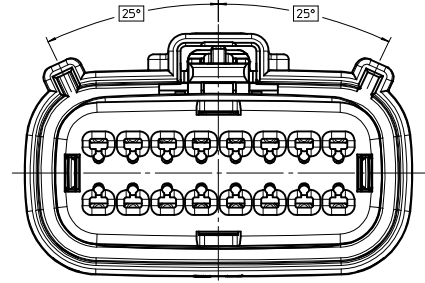
KEY A



KEY B



KEY C

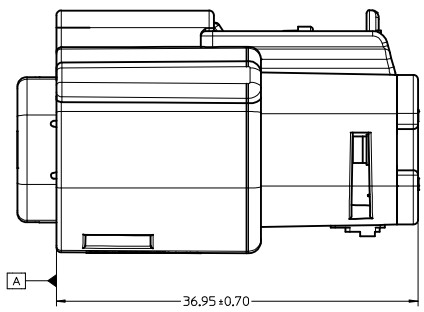
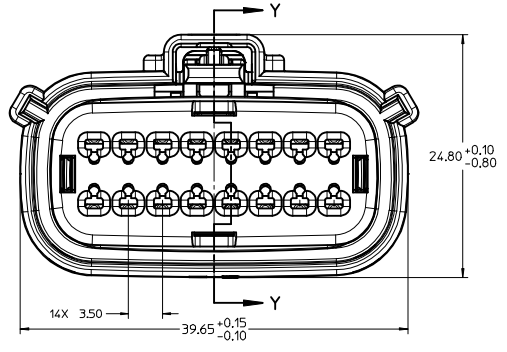
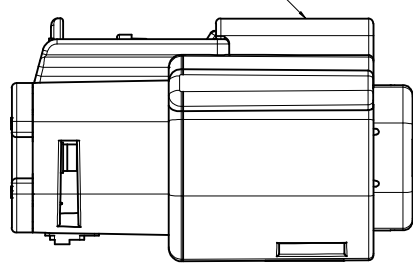


KEY D

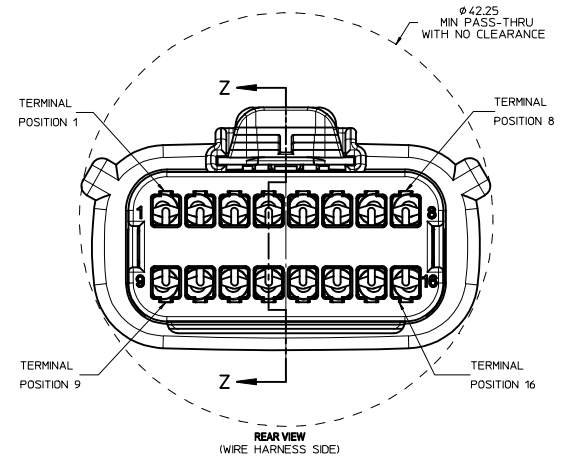
<b>ENTER DESCRIPTION</b> EC NO: UAU2013-1199 DRAWN BY: 2013/01/30 CHKD: A39 APPR: VKOSHY 2013/02/07	<b>QUALITY SYMBOLS</b> ∇=0 ∇=0 ∇=0	<b>GENERAL TOLERANCES (UNLESS SPECIFIED)</b>		<b>DIMENSION STYLE</b> MM ONLY	SCALE 4:1	DESIGN UNITS METRIC	THIRD ANGLE PROJECTION	
		4 PLACES ± mm ± INCH	DRAWN BY DGRIFITHS	DATE 05-29-03	TITLE MX150 2X8 RECEPTACLE SEALED ASSEMBLY MAT SEAL			
		3 PLACES ± 0.10 ± 0.004	CHECKED BY DGRIFITHS	DATE 05-29-03	MATERIAL NO. SEE BOM			
		2 PLACES ± 0.3 ± 0.012	APPROVED BY VKOSHY	DATE 2010/10/27	DOCUMENT NO. SD-33472-161	SHEET NO. 2 OF 7		

20 19 18 17 16 15 14 13 12 11 10 9 8 7 6 5 4 3 2 1

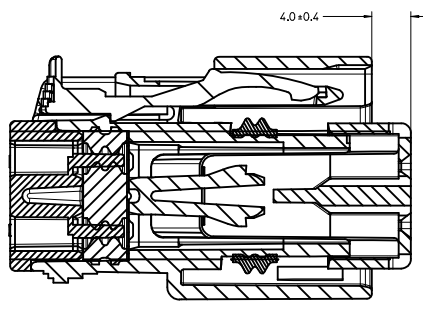
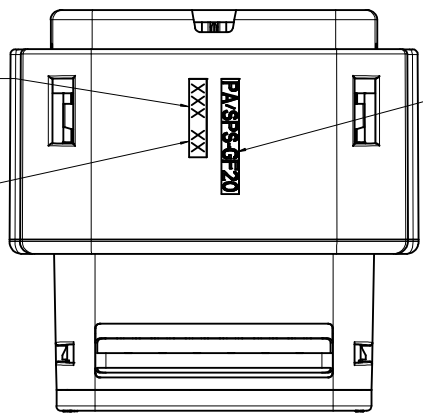
LASER MARKING ON THIS SURFACE  
SEE NOTE 3g.



RECEPTACLE SEALED ASSEMBLY

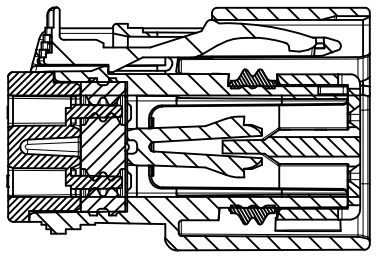


MOLD CAVITY CODE  
LOCATION CODE  
RECYCLE CODE



PRIMARY LOCK REINFORCEMENT (PLR) SHOWN  
IN PRE-STAGED POSITION  
SECTION Z-Z

4.0 ± 0.4



PRIMARY LOCK REINFORCEMENT (PLR) SHOWN  
IN FINAL-LOCK POSITION  
SECTION Y-Y

ENTER DESCRIPTION EEC NO: UAU2013-1199 DRAWN BY CHKD: APPR: VKOSHY 2013/01/30 2013/02/07 AS9	QUALITY SYMBOLS	GENERAL TOLERANCES (UNLESS SPECIFIED)	DIMENSION STYLE	SCALE	DESIGN UNITS	THIRD ANGLE PROJECTION	
	∇=0 ∇=0 ∇=0	4 PLACES ± --- ± --- 3 PLACES ± --- ± --- 2 PLACES ± 0.10 ± --- 1 PLACE ± 0.3 ± --- 0 PLACE ± ±	mm INCH ANGULAR ± 3 ° DRAFT WHERE APPLICABLE MUST REMAIN WITHIN DIMENSIONS	MM ONLY DRAWN BY DATE DGRIFITHS 05-29-03 CHECKED BY DATE DGRIFITHS 05-29-03 APPROVED BY DATE VKOSHY 2010/10/27	4:1	METRIC	MX150 2X8 RECEPTACLE SEALED ASSEMBLY MAT SEAL molex SD-33472-161
	MATERIAL NO.	DOCUMENT NO.	SHEET NO.				
SEE BOM	SD-33472-161	3 OF 7	THIS DRAWING CONTAINS INFORMATION THAT IS PROPRIETARY TO MOLEX INCORPORATED AND SHOULD NOT BE USED WITHOUT WRITTEN PERMISSION				

19 18 17 16 15 14 13 12 11 10 9 8 7 6 5 4 3 2 1

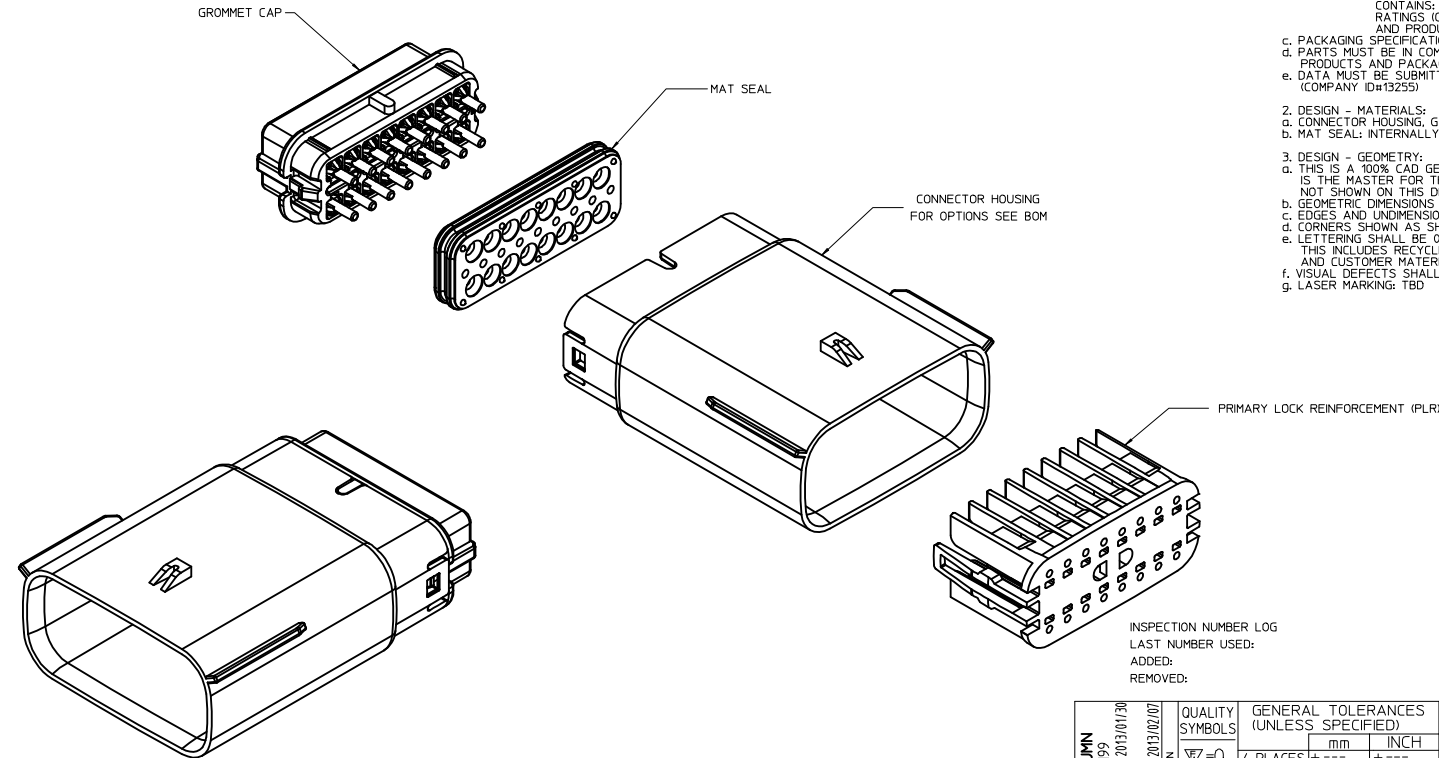








TABLE OF CONTENTS	
SHEET NO.	SHEET DESCRIPTION
1	NOTES
2	KEY CONFIGURATIONS
3	BLADE SEALED ASSEMBLY
4	SYSTEM PACKAGING
5-7	BOM



NOTES: VALID UNLESS OTHERWISE SPECIFIED

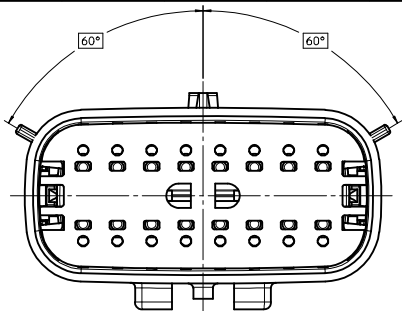
1. GENERAL:
  - a. APPLICATION SPECIFICATION SEE: AS-33472-100  
CONTAINS: PRODUCT INTRODUCTION, PRODUCT SUMMARY, CONNECTOR ASSEMBLY, PACKAGING INFORMATION, CONNECTOR MATING, SERVICE INSTRUCTIONS, ELECTRICAL CONTINUITY CHECKING, CRIMPING, AND TROUBLESHOOTING  
-DESIGNED TO MATE WITH RECEPTACLE SEALED ASSEMBLY SPECIFIED IN MOLEX DRAWING SD-33472-161  
-FOR 1.5mm BLADE TERMINALS TO BE USED WITH THIS ASSEMBLY SEE MOLEX DRAWING SD-33000-001  
- SYSTEM TO BE USED WITH WIRE WITHIN DIAMETER RANGE OF 1.2mm TO 2.69mm.  
-ASSEMBLY SHIPPED WITH PLR IN PRE-LOCK POSITION  
-IN THE EVENT THAT THE PLR IS FOUND IN THE SEATED (FINAL LOCK) POSITION, REFER TO MOLEX SPECIFICATION PS-34646-001, AVAILABLE AT [www.molex.com](http://www.molex.com) <<http://www.molex.com>>  
-ASSEMBLY CONFORMS TO SAE/USCAR-2 REV.4 WITH THE FOLLOWING EXCEPTIONS:  
TERMINAL INSERTION FORCE FOR WIRE DIAMETER ABOVE 2.5mm NOT EXCEEDING 2.69mm SHALL NOT EXCEED 45 NEWTONS.
  - b. PRODUCT SPECIFICATION SEE: PS-33472-000  
CONTAINS: PRODUCT INTRODUCTION, PRODUCT SUMMARY, RATINGS (CURRENT, TEMPERATURE, SEALING, AND FLAMMABILITY), AND PRODUCT VALIDATION.
  - c. PACKAGING SPECIFICATION PER MOLEX DRAWING: PK-31300-635
  - d. PARTS MUST BE IN COMPLIANCE TO MOLEX CHEMICAL SUBSTANCES FOR PRODUCTS AND PACKAGING SPECIFICATION: ES-40000-5016
  - e. DATA MUST BE SUBMITTED UNDER THE MOLEX PART NUMBER TO IMDS (COMPANY ID#13255)
2. DESIGN - MATERIALS:
  - a. CONNECTOR HOUSING, GROMMET CAP, PLR: SPS/NYLON 20% GLASS FILLED
  - b. MAT SEAL: INTERNALLY LUBRICATED SILICONE
3. DESIGN - GEOMETRY:
  - a. THIS IS A 100% CAD GENERATED PART. THE CAD MATHEMATICAL DATA IS THE MASTER FOR THIS PART. FOR DIMENSIONAL OR ANY INFORMATION NOT SHOWN ON THIS DRAWING, ANALYZE THE CAD MODEL.
  - b. GEOMETRIC DIMENSIONS AND TOLERANCES PER ASME Y14.5M - 1994
  - c. EDGES AND UNDIMENSIONED DETAILS PER ISO13715
  - d. CORNERS SHOWN AS SHARP TO BE R 0.2 MAX.
  - e. LETTERING SHALL BE 0.15 MAX RAISED IN 0.25 MAX RECESS PAD. THIS INCLUDES RECYCLING CODE, CAVITY ID, VENDOR IDENTIFICATION, AND CUSTOMER MATERIAL NUMBER
  - f. VISUAL DEFECTS SHALL MEET COSMETIC STANDARD PS-45499-002 (Class B)
  - g. LASER MARKING: TBD

INSPECTION NUMBER LOG  
LAST NUMBER USED:  
ADDED:  
REMOVED:

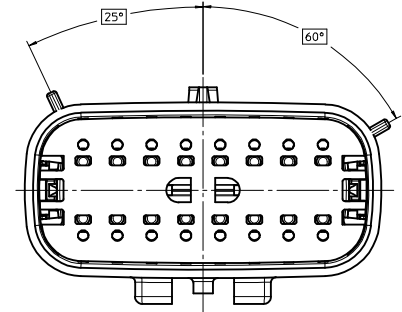
AE	ADDED PIN OUT 33482-1735 33482-1736 33482-1737
AD	ADDED PIN OUT 33482-1729 33482-1730 33482-1731 33482-1732 33482-1733 33482-1734
AC	UPDATED GROMMET CAP
AB5	COLOR REPLACEMENT FOR KEY C AND D PER USCAR STANDARD
AB4	ADDED PIN OUT 33482-1724
AB3	CORRECTED DIMENSION TO MATCH MODEL
AB2	UPDATED NOTES
AB1	UPDATED NOMENCLATURE ON SHEET 3
AB	REDRAWN
REV	DESCRIPTION

<b>SEE REV. COLUMN</b> IEC NO: UAU2013-1199 DRAWN BY: CHKD APPR: VKOSHY DATE: 2013/01/30 DESCRIPTION: 2013/02/07	QUALITY SYMBOLS	GENERAL TOLERANCES (UNLESS SPECIFIED)	DIMENSION STYLE	SCALE	DESIGN UNITS	THIRD ANGLE PROJECTION MX150 2X8 BLADE SEALED ASSEMBLY MAT SEAL <b>molex</b> MATERIAL NO: SEE BOM DOCUMENT NO: SD-33482-161 SHEET NO: 1 OF 7	
	$\nabla=0$ $\nabla=0$ $\nabla=0$	mm INCH 4 PLACES ± --- ± --- 3 PLACES ± --- ± --- 2 PLACES ± 0.10 ± --- 1 PLACE ± 0.3 ± --- 0 PLACE ± ±	DRAWN BY: DGR1FF1THS DATE: 05-29-03 CHECKED BY: DGR1FF1THS DATE: 05-29-03 APPROVED BY: VKOSHY DATE: 2010/04/06	MM ONLY	3:1		METRIC
		ANGULAR ± 3 °					
		DRAFT WHERE APPLICABLE MUST REMAIN WITHIN DIMENSIONS					

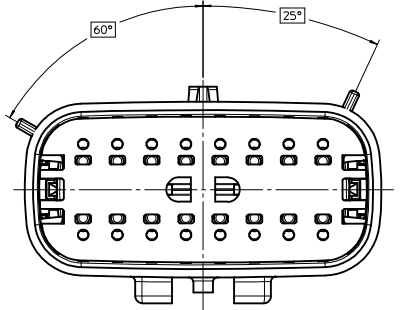
KEY CONFIGURATIONS



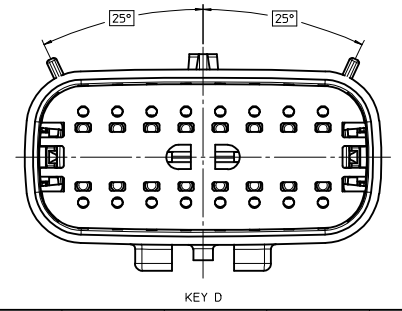
KEY A



KEY B



KEY C

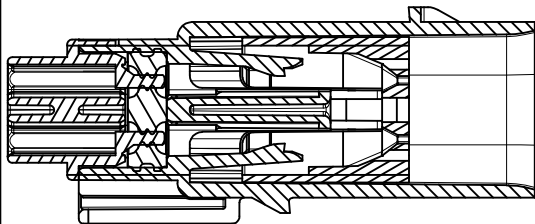
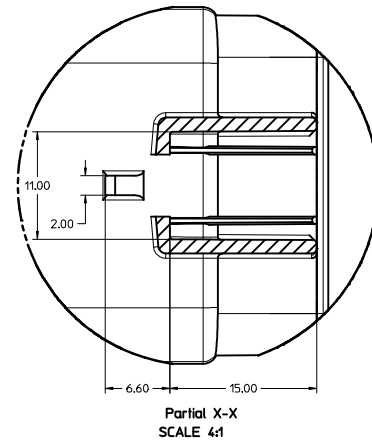
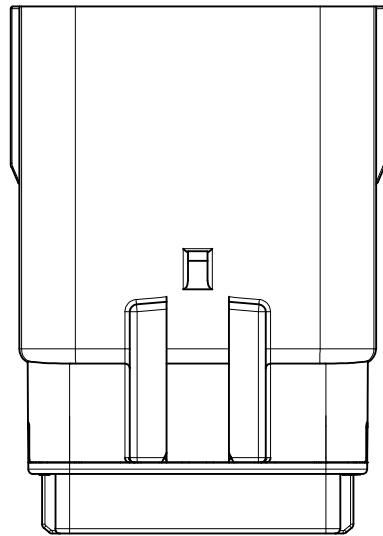
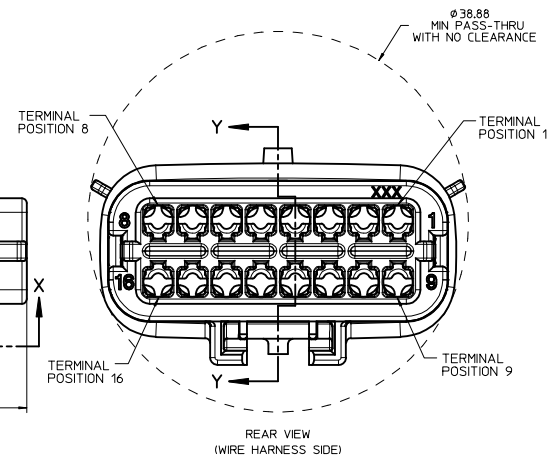
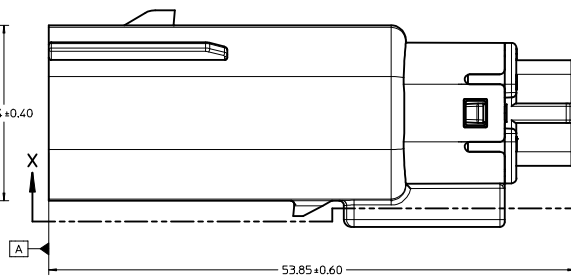
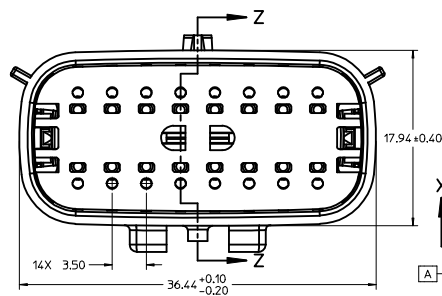
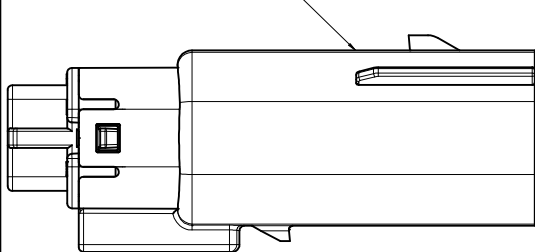


KEY D

SEE REV. COLUMN IEC NO: UAU2013-1199 DRAWN BY: 2013/01/30 CHKD: AP APPR: VKOSHY 2013/02/07	QUALITY SYMBOLS	GENERAL TOLERANCES (UNLESS SPECIFIED)	DIMENSION STYLE	SCALE	DESIGN UNITS	THIRD ANGLE PROJECTION
	▽=0	mm INCH	MM ONLY	4:1	METRIC	
	▽=0	4 PLACES ± --- ± ---	DRAWN BY DATE			
	▽=0	3 PLACES ± --- ± ---	DGRIFITHS 05-29-03			
	2 PLACES ± 0.10 ± ---	CHECKED BY DATE				MX150 2X8 BLADE SEALED ASSEMBLY MAT SEAL <b>molex</b>
	1 PLACE ± 0.3 ± ---	DGRIFITHS 05-29-03				
	0 PLACE ± ±	APPROVED BY DATE				MATERIAL NO. SEE BOM DOCUMENT NO. SD-33482-161
		ANGULAR ± 3 °				SHEET NO. 2 OF 7
		DRAFT WHERE APPLICABLE MUST REMAIN WITHIN DIMENSIONS	SIZE D	THIS DRAWING CONTAINS INFORMATION THAT IS PROPRIETARY TO MOLEX INCORPORATED AND SHOULD NOT BE USED WITHOUT WRITTEN PERMISSION		

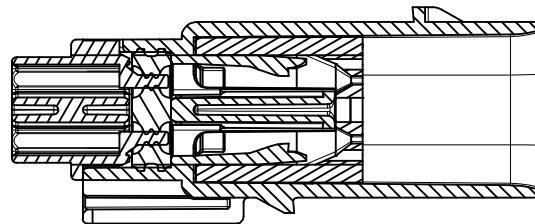
BLADE SEALED ASSEMBLY

OPTIONAL LASER MARKING ON THIS SURFACE SEE NOTE 3g.



PRIMARY LOCK REINFORCEMENT (PLR) SHOWN IN PRE-STAGED POSITION

SECTION Z-Z



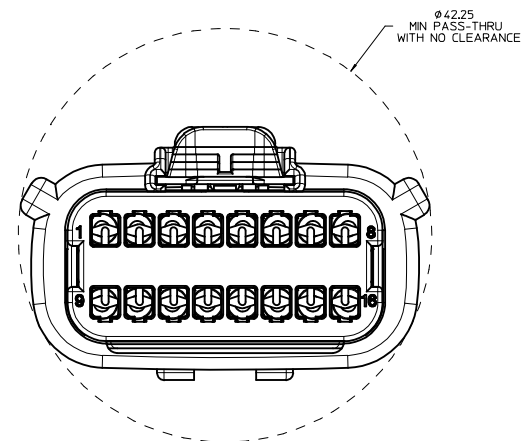
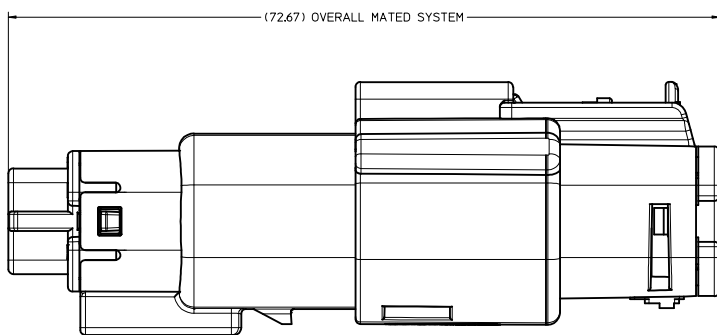
PRIMARY LOCK REINFORCEMENT (PLR) SHOWN IN FINAL-LOCK POSITION

SECTION Y-Y

SEE REV. COLUMN ELC NO: UAU2013-1199 DRAWN BY: AE CHKD: APPR: VKOSHY 2013/01/30 2013/02/07	QUALITY SYMBOLS	GENERAL TOLERANCES (UNLESS SPECIFIED)	DIMENSION STYLE	SCALE	DESIGN UNITS	THIRD ANGLE PROJECTION	
	∇=0 ∇=0 ∇=0	mm    INCH 4 PLACES ± --- ± --- 3 PLACES ± --- ± --- 2 PLACES ± 0.10 ± --- 1 PLACE ± 0.3 ± --- 0 PLACE ± ±	MM ONLY	4:1	METRIC	DRAWN BY: DGRIFITHS DATE: 05-29-03 CHECKED BY: DATE DGRIFITHS 05-29-03 APPROVED BY: DATE VKOSHY 2010/04/06	TITLE: MX150 2X8 BLADE SEALED ASSEMBLY MAT SEAL molex DOCUMENT NO. SD-33482-161
	ANGULAR ± 3 ° DRAFT WHERE APPLICABLE MUST REMAIN WITHIN DIMENSIONS	MATERIAL NO.	SEE BOM	SHEET NO.	3 OF 7		
	SIZE D THIS DRAWING CONTAINS INFORMATION THAT IS PROPRIETARY TO MOLEX INCORPORATED AND SHOULD NOT BE USED WITHOUT WRITTEN PERMISSION						

20 19 18 17 16 15 14 13 12 11 10 9 8 7 6 5 4 3 2 1

SYSTEM PACKAGING



SEE REV. COLUMN IEC NO: UAU2013-1199 DRAWN BY: 2013/01/30 CHKD: AF APPR: VKOSHY 2013/02/07	QUALITY SYMBOLS	GENERAL TOLERANCES (UNLESS SPECIFIED)	DIMENSION STYLE	SCALE	DESIGN UNITS	THIRD ANGLE PROJECTION
	▽=0 ▽=0 ▽=0	mm INCH 4 PLACES ± --- ± --- 3 PLACES ± --- ± --- 2 PLACES ± 0.10 ± --- 1 PLACE ± 0.3 ± --- 0 PLACE ± ±	MM ONLY	4:1	METRIC	DRAWN BY DATE DGRIFFI THS 05-29-03 CHECKED BY DATE DGRIFFI THS 05-29-03 APPROVED BY DATE VKOSHY 2010/04/06
	ANGULAR ± 3 ° DRAFT WHERE APPLICABLE MUST REMAIN WITHIN DIMENSIONS	MATERIAL NO.	DOCUMENT NO.		SHEET NO.	
	SIZE D	SEE BOM	SD-33482-161		4 OF 7	

MX150 2X8 BLADE  
SEALED ASSEMBLY  
MAT SEAL

**molex**

THIS DRAWING CONTAINS INFORMATION THAT IS PROPRIETARY TO MOLEX  
INCORPORATED AND SHOULD NOT BE USED WITHOUT WRITTEN PERMISSION

19 18 17 16 15 14 13 12 11 10 9 8 7 6 5 4 3 2 1



ASSEMBLY PART NUMBER	COLOR	KEYING OPTION	CAVITY TYPE & STATUS ( X = PLUGGED)															
			1	2	3	4	5	6	7	8	9	10	11	12	13	14	15	16
33482-1651	LT.GRAY	B															X	
33482-1652	LT.GRAY	B						X	X	X							X	
33482-1653	BLACK	A									X						X	
33482-1654	BLACK	A				X				X			X					
33482-1655	LT.GRAY	B				X				X			X		X			
33482-1656	LT.GRAY	B								X						X		
33482-1657	BLACK	A	X							X								
33482-1658	LT.GRAY	B		X		X		X	X	X			X		X			
33482-1659	LT.GRAY	B		X				X	X	X						X		
33482-1660	LT.GRAY	B		X						X						X		
33482-1661	BLACK	A	X	X		X				X				X				
33482-1662	LT.GRAY	B		X		X				X				X		X		
33482-1663	BLACK	A	X							X								
33482-1664	BLACK	A			X					X	X					X	X	
33482-1665	BLACK	A			X	X	X	X	X	X	X					X	X	
33482-1666	BLACK	A	X	X		X	X	X	X	X					X	X	X	
33482-1667	BLACK	A	X			X	X			X				X	X	X	X	
33482-1668	BLACK	A	X			X	X			X	X			X	X	X	X	
33482-1669	BLACK	A	X			X				X				X		X		
33482-1670	BLACK	A	X		X	X	X	X	X	X	X			X	X	X	X	
33482-1671	BLACK	A	X		X	X	X	X	X	X				X	X	X		
33482-1672	BLACK	A			X					X								
33482-1673	BLACK	A	X					X	X	X								
33482-1674	BLACK	A	X				X	X										
33482-1675	BLACK	A	X			X	X					X						
33482-1676	BLACK	A			X	X	X	X				X		X				
33482-1677	BLACK	A			X	X	X	X				X		X				
33482-1678	BLACK	A			X	X	X	X				X		X	X			
33482-1679	BLACK	A			X	X	X	X				X		X	X	X		
33482-1680	BLACK	A			X	X	X	X				X		X	X	X	X	
33482-1681	BLACK	A						X									X	
33482-1682	BLACK	A				X	X	X									X	X
33482-1683	BLACK	A			X	X	X	X									X	X
33482-1684	BLACK	A	X	X	X	X	X	X	X							X	X	X
33482-1685	BLACK	A														X	X	X
33482-1686	BLACK	A							X							X	X	X
33482-1687	BLACK	A						X	X					X	X	X	X	
33482-1688	BLACK	A						X	X					X	X	X	X	
33482-1689	BLACK	A						X	X					X				
33482-1690	BLACK	A						X	X					X				
33482-1691	BLACK	A				X								X				
33482-1692	BLACK	A	X							X	X						X	X
33482-1693	BLACK	A	X							X							X	
33482-1694	BLACK	A	X			X	X	X	X	X	X			X		X	X	X
33482-1695	BLACK	A	X			X	X	X	X	X	X			X		X	X	X
33482-1700	BLACK	A	X	X	X	X	X	X	X	X	X			X	X	X	X	X
33482-1701	BLACK	A	X	X	X	X	X	X	X	X	X			X	X	X	X	X
33482-1702	BLACK	A						X	X	X	X	X	X	X	X	X	X	X
33482-1703	BLACK	A						X	X	X	X	X	X	X	X	X	X	X
33482-1704	BLACK	A	X	X	X	X	X	X								X	X	X
33482-1705	BLACK	A									X	X	X	X	X	X	X	X
33482-1706	BLACK	A									X	X	X	X	X	X	X	X
33482-1707	BLACK	A						X	X	X	X							
33482-1708	BLACK	A														X	X	X
33482-1709	BLACK	A												X	X	X	X	X
33482-1710	BLACK	A	X	X	X	X	X	X	X	X	X							
33482-1711	LT.GRAY	B	X	X	X	X	X	X	X	X	X			X		X	X	X
33482-1712	LT.GRAY	B	X	X	X	X	X	X	X	X	X			X		X	X	X

SEE REV. COLUMN IEC NO: UAU2013-199 DRAWN BY: AE CHKD: CHKD APPR: IKOSHY 2013/02/07	QUALITY SYMBOLS	GENERAL TOLERANCES (UNLESS SPECIFIED)	DIMENSION STYLE	SCALE	DESIGN UNITS	THIRD ANGLE PROJECTION
	▽=0	4 PLACES ± mm	MM ONLY	DRAWN BY DATE	METRIC	MX150 2X8 BLADE SEALED ASSEMBLY MAT SEAL <b>molex</b> MATERIAL NO. SD-33482-161 DOCUMENT NO. 6 OF 7
	▽=0	3 PLACES ± 0.10	DRAFT WHERE APPLICABLE MUST REMAIN WITHIN DIMENSIONS	CHECKED BY DATE		
	▽=0	2 PLACES ± 0.3		APPROVED BY DATE		
▽=0	1 PLACE ±		VKOSHY 2010/04/06			

ASSEMBLY PART NUMBER	COLOR	KEYING OPTION	CAVITY TYPE & STATUS ( X = PLUGGED)															
			1	2	3	4	5	6	7	8	9	10	11	12	13	14	15	16
33482-1713	BLACK	A		X	X	X				X	X					X	X	
33482-1714	BLACK	A		X	X	X	X			X	X	X	X	X		X	X	
33482-1715	BLACK	A	X	X	X	X				X	X	X	X	X		X	X	
33482-1716	BLACK	A	X	X	X	X				X	X	X	X	X		X	X	
33482-1717	BLACK	A	X	X	X	X	X	X	X						X	X	X	
33482-1718	BLACK	A													X	X	X	
33482-1719	BLACK	A	X				X	X	X	X	X				X	X	X	
33482-1720	BLACK	A											X		X			
33482-1721	LT.GRAY	B				X		X	X			X	X	X	X			
33482-1722	LT.GRAY	B	X	X	X	X		X	X	X	X	X	X	X	X	X	X	
33482-1723	BLACK	A	X	X	X	X	X	X			X				X	X	X	
33482-1724	BLACK	A									X				X	X	X	
33482-1725	DK.GRAY	C																
33482-1726	ST.GRAY	D																
33482-1727	DK.GRAY	C	X	X	X	X	X	X	X	X	X	X	X	X	X	X	X	
33482-1728	ST.GRAY	D	X	X	X	X	X	X	X	X	X	X	X	X	X	X	X	
33482-1729	BLACK	A							X	X			X	X	X	X	X	
33482-1730	BLACK	A				X	X	X	X	X	X	X	X	X	X	X	X	
33482-1731	BLACK	A							X	X	X	X	X	X	X	X	X	
33482-1732	LT.GRAY	B					X	X	X		X							
33482-1733	LT.GRAY	B	X	X	X	X	X		X	X	X	X	X	X	X	X	X	
33482-1734	LT.GRAY	B					X		X	X	X	X	X	X	X	X	X	
33482-1735	BLACK	A					X			X	X	X	X	X				
33482-1736	BLACK	A	X	X	X	X	X								X	X		
33482-1737	BLACK	A	X	X	X	X	X			X	X	X	X	X				

AE  
AE  
AE

SEE REV. COLUMN EC NO: UAU2013-1199 DRAWN BY: AT CHKD: APPR:VKOSHY 2013/01/30 2013/02/07	QUALITY SYMBOLS	GENERAL TOLERANCES (UNLESS SPECIFIED)	DIMENSION STYLE	SCALE	DESIGN UNITS	THIRD ANGLE PROJECTION
	▽=0	4 PLACES ± .005	MM ONLY		METRIC	
	▽=0	3 PLACES ± .01				
	▽=0	2 PLACES ± 0.10				
		1 PLACE ± 0.3				
		0 PLACE ±				
		ANGULAR ± 3°				
		DRAFT WHERE APPLICABLE MUST REMAIN WITHIN DIMENSIONS				
			MATERIAL NO.		DOCUMENT NO.	SHEET NO.
			SEE BOM		SD-33482-161	7 OF 7
			THIS DRAWING CONTAINS INFORMATION THAT IS PROPRIETARY TO MOLEX INCORPORATED AND SHOULD NOT BE USED WITHOUT WRITTEN PERMISSION			

## Данный компонент на территории Российской Федерации

### Вы можете приобрести в компании MosChip.

Для оперативного оформления запроса Вам необходимо перейти по данной ссылке:

<http://moschip.ru/get-element>

Вы можете разместить у нас заказ для любого Вашего проекта, будь то серийное производство или разработка единичного прибора.

В нашем ассортименте представлены ведущие мировые производители активных и пассивных электронных компонентов.

Нашей специализацией является поставка электронной компонентной базы двойного назначения, продукции таких производителей как XILINX, Intel (ex.ALTERA), Vicor, Microchip, Texas Instruments, Analog Devices, Mini-Circuits, Amphenol, Glenair.

Сотрудничество с глобальными дистрибьюторами электронных компонентов, предоставляет возможность заказывать и получать с международных складов практически любой перечень компонентов в оптимальные для Вас сроки.

На всех этапах разработки и производства наши партнеры могут получить квалифицированную поддержку опытных инженеров.

Система менеджмента качества компании отвечает требованиям в соответствии с ГОСТ Р ИСО 9001, ГОСТ РВ 0015-002 и ЭС РД 009

### Офис по работе с юридическими лицами:

105318, г.Москва, ул.Щербаковская д.3, офис 1107, 1118, ДЦ «Щербаковский»

Телефон: +7 495 668-12-70 (многоканальный)

Факс: +7 495 668-12-70 (доб.304)

E-mail: [info@moschip.ru](mailto:info@moschip.ru)

Skype отдела продаж:

moschip.ru

moschip.ru\_4

moschip.ru\_6

moschip.ru\_9