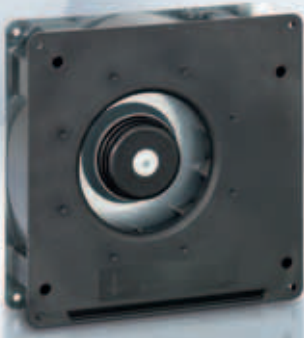


max. 137 m³/h

DC centrifugal fans

Series RG 125 N 180 x 180 x 40 mm

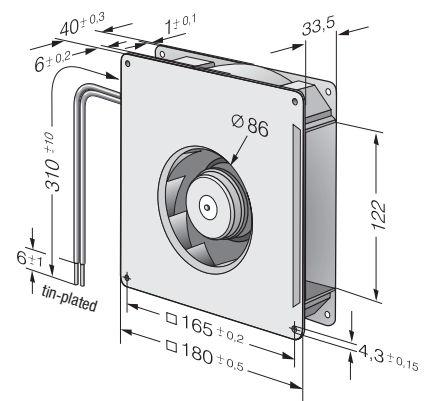
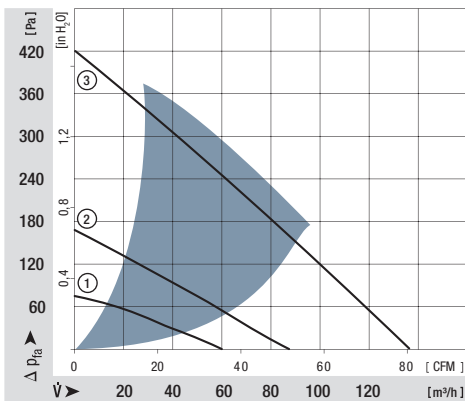


- **Material:** Scroll housing: GRP¹⁾
Impeller: GRP¹⁾
Housing base: Sheet steel
 - **Direction of air flow:** Axial: Intake
Centrifugal: Exhaust
 - **Connection:** Via single wires AWG 22, TR 64
48 V model: Flat plug
6.3 x 0.8 mm for protective earth
 - **Highlights:** Backwards-curved impeller
 - **Mass:** 730 g
- **Possible special versions:**
(See chapter DC fans - specials)
 - Speed signal
 - Go / No-go alarm
 - Alarm with limit speed
 - External temperature sensor
 - Internal temperature sensor
 - PWM control input
 - Analogue control input
 - Protection against moisture
 - Protection against salt fog
 - Type of protection: IP 54 / IP 68

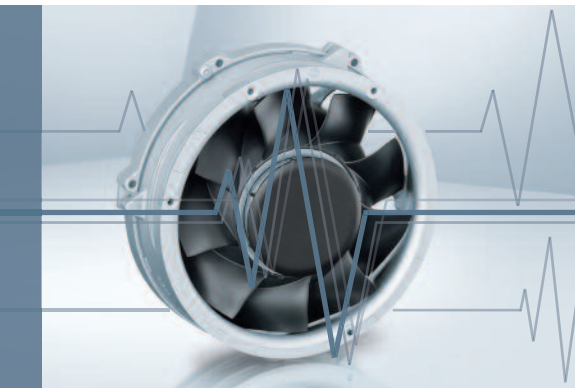
1) Fibreglass-reinforced plastic

| Nominal data | Air flow | | Nominal voltage | Voltage range | Sound power level | Sinter sleeve bearings Ball bearings | Input power | Nominal speed | Temperature range | Service life L ₁₀ (40 °C) ebm-papst Standard | Service life L ₁₀ (T _{max}) ebm-papst Standard | Life expectancy L ₁₀ (IPC (40 °C) see page 17 | Curve |
|-----------------|-------------------|------|-----------------|---------------|-------------------|---|-------------|---------------|-------------------|--|--|---|-------|
| | m ³ /h | CFM | | | | | | | | | | | |
| RG 125-19/12 NM | 60,0 | 35,3 | 12 | 7...15 | 4,8 | ■ | 2,0 | 1 750 | -30...+75 | 70 000 / 30 000 | 117 500 | 117 500 | ① |
| RG 125-19/12 N | 87,5 | 51,5 | 12 | 7...15 | 5,8 | ■ | 5,2 | 2 550 | -30...+75 | 62 500 / 27 500 | 105 000 | 105 000 | ② |
| RG 125-19/14 NM | 60,0 | 35,3 | 24 | 12...28 | 4,8 | ■ | 2,0 | 1 750 | -30...+75 | 70 000 / 30 000 | 117 500 | 117 500 | ① |
| RG 125-19/14 N | 87,5 | 51,5 | 24 | 12...28 | 5,8 | ■ | 4,9 | 2 550 | -30...+75 | 62 500 / 27 500 | 105 000 | 105 000 | ② |
| RG 125-19/18 N | 87,5 | 51,5 | 48 | 36...56 | 5,8 | ■ | 4,8 | 2 550 | -30...+75 | 62 500 / 27 500 | 105 000 | 105 000 | ② |
| RG 125-19/18 NH | 137 | 80,6 | 48 | 36...56 | 7,0 | ■ | 19,0 | 4 000 | -20...+70 | 55 000 / 27 500 | 92 500 | 92 500 | ③ |

Subject to alternations

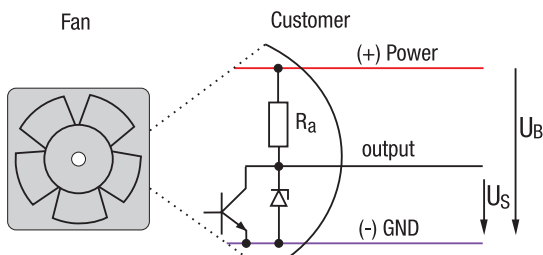


Speed signal /12



- Speed-proportional, square-wave signal for external monitoring of the fan motor speed
- 2, 3, or 6 pulses per revolution
- TTL-compatible
- Integrated pull-up resistor
- Connection via separate cable
- The sensor signal also serves as a major comparison variable for setting and maintaining the setpoint speed for interactive or controlled cooling with one or more interconnected fans.

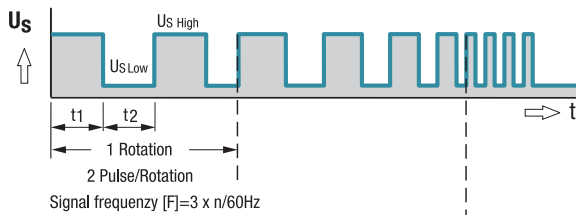
Electrical hookup



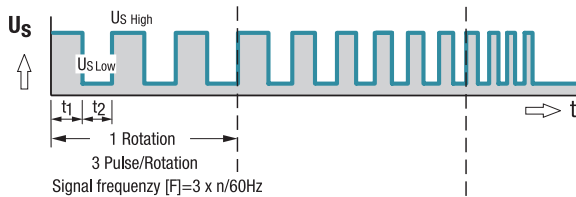
All voltages measured to ground.

Signal output voltage

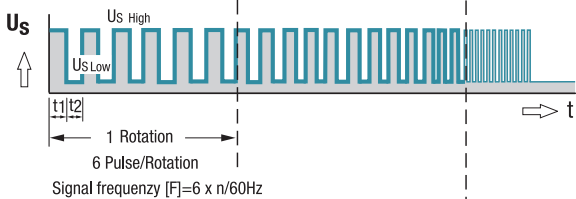
Standard signal for all models (exceptions see below)



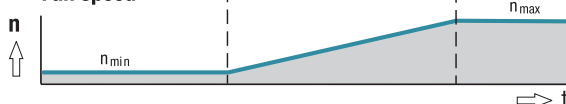
For multi options control input and 4100 NH7 and NH8



All TD Fans e.g. 6300 TD



Fan speed



| Signal data | Speed signal $U_{S\text{Low}}$ | Condition: I_{sink} | Speed signal $U_{S\text{High}}$ | Condition: I_{source} | Admissible sink current $I_{\text{sink max.}}$ | Fan description Basic type |
|--------------|--------------------------------|------------------------------|---------------------------------|--------------------------------|--|----------------------------|
| Type | VDC | mA | VDC | mA | mA | Page |
| 614 N/12 GM | ≤ 0.4 | 1 | 2.5–5.5 | 1 | 1 | 39 |
| 618 N/12 N | ≤ 0.4 | 1 | 2.5–5.5 | 1 | 1 | 39 |
| 8412 N/12 H | ≤ 0.4 | 1 | 2.5–5.5 | 1 | 1 | 44 |
| 4412 F/12 GM | ≤ 0.4 | 1 | 2.5–5.5 | 1 | 1 | 53 |
| 4418 F/12 | ≤ 0.4 | 1 | 2.5–5.5 | 1 | 1 | 53 |
| 4312 /12 M | ≤ 0.4 | 1 | 2.5–5.5 | 1 | 1 | 56 |
| 4314 /12 | ≤ 0.4 | 1 | 2.5–5.5 | 1 | 1 | 56 |
| 4182 N/12 X | ≤ 0.4 | 1 | 2.5–5.5 | 1 | 1 | 60 |

Subject to change

Note:

With these fan options, deviations in regard to temperature range, voltage range and power consumption are possible compared with standard fan data.

Available on request:

- Electrically isolated speed signal circuit
- Varying voltage potentials for power and logic circuit

| Signal data | | Speed signal U _S Low | Condition: I _{sink} | Speed signal U _S High | Condition: I _{source} | Admissible sink current I _{sink} max. | Fan description Basic type |
|--------------------|------|------------------------------------|------------------------------|-------------------------------------|--------------------------------|---|-------------------------------|
| Type | VDC | mA | VDC | mA | mA | Page | |
| 7214 N/12 | ≤0.4 | 2 | 2.5–5.5 | 1 | ≤20 | 70 | |
| 6424/12 H | ≤0.4 | 2 | 2.5–5.5 | 1 | ≤20 | 71 | |
| DV 6424/12 | ≤0.4 | 2 | 4.5–5.25 | 2 | ≤12 | 73 | |
| DV 6448/12 | ≤0.4 | 2 | 4.5–5.25 | 2 | ≤12 | 73 | |
| RG 125-19/12 N/12 | ≤0.4 | 1 | 2.5–5.5 | 1 | ≤1 | 103 | |
| RG 160-28/12 N/12 | ≤0.4 | 2 | 2.5–5.5 | 1 | ≤5 | 104 | |
| RG 160-28/18 N/12 | ≤0.4 | 2 | 2.5–5.5 | 1 | ≤20 | 104 | |
| RER 125-19/12 N/12 | ≤0.4 | 1 | 2.5–5.5 | 1 | ≤1 | 116 | |
| RER 160-28/12 N/12 | ≤0.4 | 2 | 2.5–5.5 | 1 | ≤5 | 118 | |
| RER 160-28/18 N/12 | ≤0.4 | 2 | 2.5–5.5 | 1 | ≤20 | 118 | |

Subject to change

Note:

Fans that come with these fan specials could have variations with respect to the temperature range, voltage range, and power consumption compared to standard fans without specials.

Данный компонент на территории Российской Федерации

Вы можете приобрести в компании MosChip.

Для оперативного оформления запроса Вам необходимо перейти по данной ссылке:

<http://moschip.ru/get-element>

Вы можете разместить у нас заказ для любого Вашего проекта, будь то серийное производство или разработка единичного прибора.

В нашем ассортименте представлены ведущие мировые производители активных и пассивных электронных компонентов.

Нашей специализацией является поставка электронной компонентной базы двойного назначения, продукции таких производителей как XILINX, Intel (ex.ALTERA), Vicor, Microchip, Texas Instruments, Analog Devices, Mini-Circuits, Amphenol, Glenair.

Сотрудничество с глобальными дистрибьюторами электронных компонентов, предоставляет возможность заказывать и получать с международных складов практически любой перечень компонентов в оптимальные для Вас сроки.

На всех этапах разработки и производства наши партнеры могут получить квалифицированную поддержку опытных инженеров.

Система менеджмента качества компании отвечает требованиям в соответствии с ГОСТ Р ИСО 9001, ГОСТ РВ 0015-002 и ЭС РД 009

Офис по работе с юридическими лицами:

105318, г.Москва, ул.Щербаковская д.3, офис 1107, 1118, ДЦ «Щербаковский»

Телефон: +7 495 668-12-70 (многоканальный)

Факс: +7 495 668-12-70 (доб.304)

E-mail: info@moschip.ru

Skype отдела продаж:

moschip.ru

moschip.ru_4

moschip.ru_6

moschip.ru_9