



Heat Exchangers

TUBE TO FIN, LIQUID-TO-AIR HEAT EXCHANGERS

ATS tube-to-fin, liquid-to-air heat exchangers are made with the industry's highest density fins to maximize heat transfer from liquid to air, allowing the liquid to be cooled to lower temperatures than other heat exchangers on the market. The heat exchanger fins and tubes are made of copper and stainless steel to be suitable for a variety of fluids, including water, dielectric fluids and custom designed heat transfer fluids.

Each of the seven heat exchanger sizes is available with or without a fan. ATS heat exchangers can be used in laser cooling, medical equipment and imaging devices, compressor cooling, semiconductor processing, HVAC, food and beverage processing, and other liquid cooling applications.



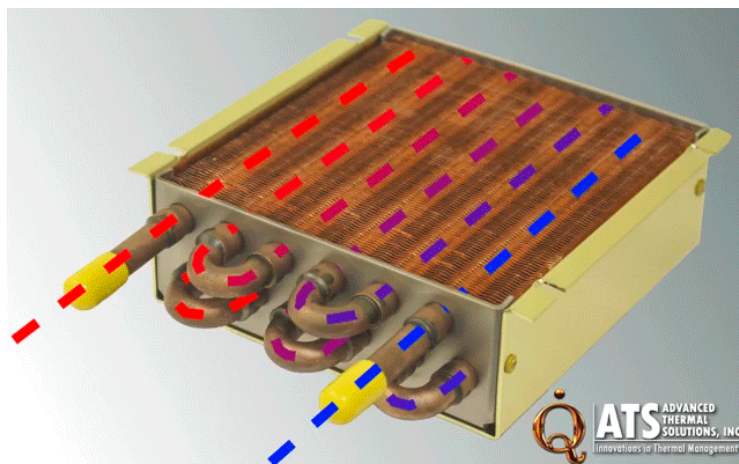
GENERAL FEATURES

- » Length: 5.8 to 21.9"
- » Width: 5.8 to 14"
- » Height: 1.8 to 2.6"
- » Tube diameter: 0.375 and 0.5"
- » Copper tubes
- » Copper fins
- » High-efficiency and high density fin design
- » Silver-solder brazed joints
- » Internally cleaned and corrosion protected
- » Externally coated for corrosion protection
- » Can be customized for different fans
- » 100% pressure tested

APPLICATIONS

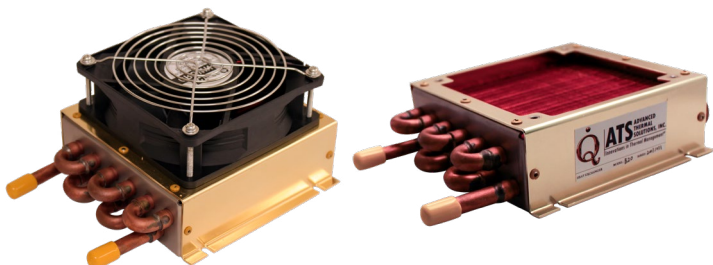
- » Automotive
- » Aerospace
- » Medical
- » Laser cooling
- » Electronics Cooling
- » Compressor Cooling
- » Semiconductor Processing
- » HVAC

For further information, please contact
Advanced Thermal Solutions, Inc. at
1-781-769-2800 or **www.qats.com**



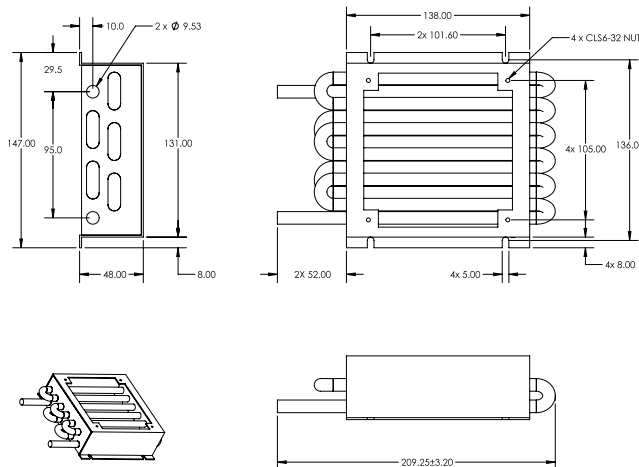


ATS-HE20 SERIES

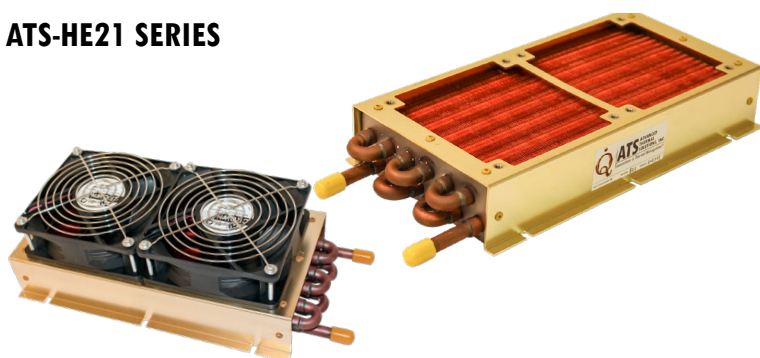


| MPN | FAN TYPE | # OF FANS | FAN SIZE (inches) |
|----------------|----------|-----------|-------------------|
| ATS-HE20-C1-R0 | NO FAN | 0 | N/A |
| ATS-HE20-C2-R0 | 12V | 1 | 4.25 Square |
| ATS-HE20-C3-R0 | 12V PWM | 1 | 4.25 Square |
| ATS-HE20-C4-R0 | 24V | 1 | 4.25 Square |
| ATS-HE20-C5-R0 | 24V PWM | 1 | 4.25 Square |
| ATS-HE20-C6-R0 | 48V | 1 | 4.25 Square |
| ATS-HE20-C7-R0 | 48V PWM | 1 | 4.25 Square |

- » Heat transfer capacity up to 22W per $\Delta T = 1^{\circ}\text{C}$
- » 5.8 x 5.8 x 1.8" core size
- » ΔT = inlet liquid temperature - inlet air temperature
- » Weight: 1077g (2.4 lbs), Weight w/fan: 1411g (3.1 lbs)
- » Maximum pressure: 100 psi

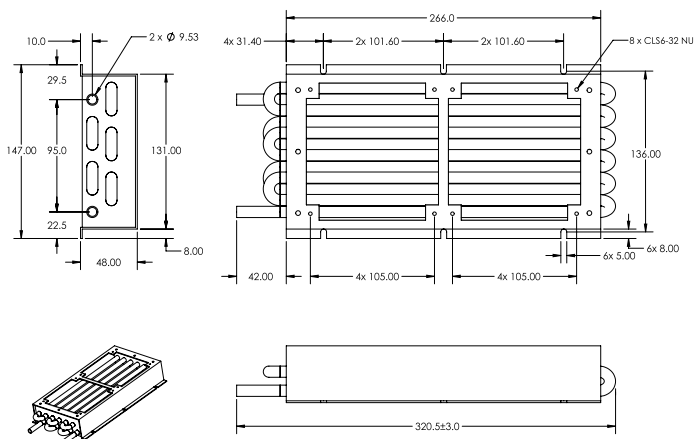


ATS-HE21 SERIES



| MPN | FAN TYPE | # OF FANS | FAN SIZE (inches) |
|----------------|----------|-----------|-------------------|
| ATS-HE21-C1-R0 | NO FAN | 0 | N/A |
| ATS-HE21-C2-R0 | 12V | 2 | 4.25 Square |
| ATS-HE21-C3-R0 | 12V PWM | 2 | 4.25 Square |
| ATS-HE21-C4-R0 | 24V | 2 | 4.25 Square |
| ATS-HE21-C5-R0 | 24V PWM | 2 | 4.25 Square |
| ATS-HE21-C6-R0 | 48V | 2 | 4.25 Square |
| ATS-HE21-C7-R0 | 48V PWM | 2 | 4.25 Square |

- » Heat transfer capacity up to 46W per $\Delta T = 1^{\circ}\text{C}$
- » 10.5 x 5.8 x 1.8" core size
- » ΔT = inlet liquid temperature - inlet air temperature
- » Weight: 1759g (3.9 lbs); Weight w/fan: 2405g (5.3 lbs)
- » Maximum pressure: 100 psi



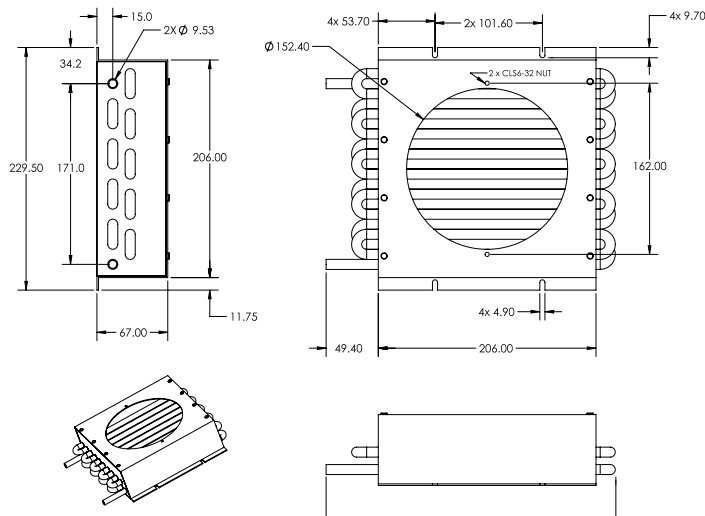


ATS-HE22 SERIES

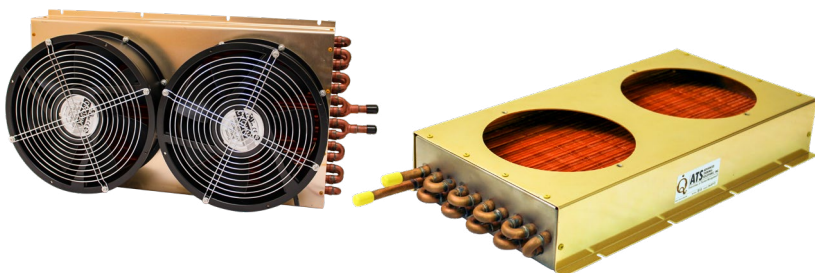


| MPN | FAN TYPE | # OF FANS | FAN SIZE (inches) |
|----------------|----------|-----------|-------------------|
| ATS-HE22-C1-R0 | NO FAN | 0 | N/A |
| ATS-HE22-C2-R0 | 12V | 1 | 6.75 Round |
| ATS-HE22-C3-R0 | 12V PWM | 1 | 6.75 Round |
| ATS-HE22-C4-R0 | 24V | 1 | 6.75 Round |
| ATS-HE22-C5-R0 | 24V PWM | 1 | 6.75 Round |
| ATS-HE22-C6-R0 | 48V | 1 | 6.75 Round |
| ATS-HE22-C7-R0 | 48V PWM | 1 | 6.75 Round |

- » Heat transfer capacity up to 64W per $\Delta T = 1^{\circ}\text{C}$
- » 9.5 x 9.0 x 2.5" core size
- » $\Delta T = \text{inlet liquid temperature} - \text{inlet air temperature}$
- » Weight: 2211g (4.9 lbs); Weight w/fan: 2854g (6.23 lbs)
- » Maximum pressure: 100 psi

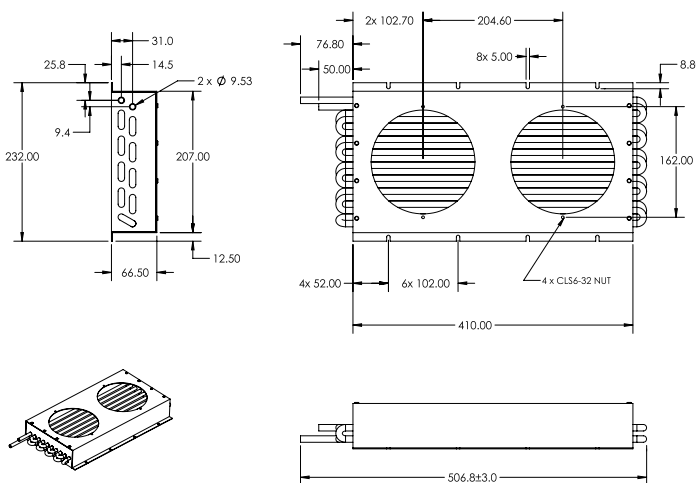


ATS-HE23 SERIES



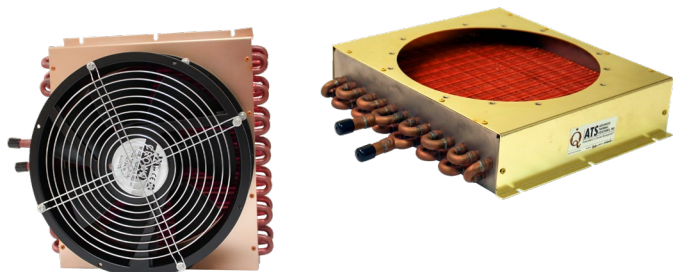
| MPN | FAN TYPE | # OF FANS | FAN SIZE (inches) |
|----------------|----------|-----------|-------------------|
| ATS-HE23-C1-R0 | NO FAN | 0 | N/A |
| ATS-HE23-C2-R0 | 12V | 2 | 6.75 Round |
| ATS-HE23-C3-R0 | 12V PWM | 2 | 6.75 Round |
| ATS-HE23-C4-R0 | 24V | 2 | 6.75 Round |
| ATS-HE23-C5-R0 | 24V PWM | 2 | 6.75 Round |
| ATS-HE23-C6-R0 | 48V | 2 | 6.75 Round |
| ATS-HE23-C7-R0 | 48V PWM | 2 | 6.75 Round |

- » Heat transfer capacity up to 117W per $\Delta T = 1^{\circ}\text{C}$
- » 17.5 x 9.0 x 2.5" core size
- » $\Delta T = \text{inlet liquid temperature} - \text{inlet air temperature}$
- » Weight: 7000g (15.4 lbs); Weight w/fan: 7600g (16.8 lbs)
- » Maximum pressure: 100 psi



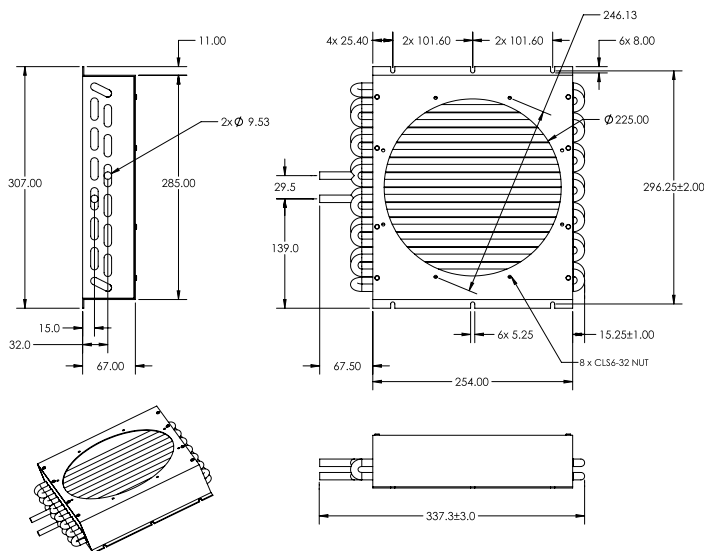


ATS-HE24 SERIES

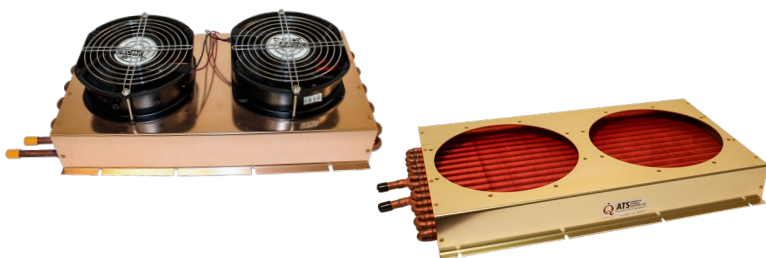


| MPN | FAN TYPE | # OF FANS | FAN SIZE (inches) |
|----------------|----------|-----------|-------------------|
| ATS-HE24-C1-R0 | NO FAN | 0 | N/A |
| ATS-HE24-C2-R0 | 12V | 1 | 10.0 Round |
| ATS-HE24-C3-R0 | 12V PWM | 1 | 10.0 Round |
| ATS-HE24-C4-R0 | 24V | 1 | 10.0 Round |
| ATS-HE24-C5-R0 | 24V PWM | 1 | 10.0 Round |
| ATS-HE24-C6-R0 | 48V | 1 | 10.0 Round |
| ATS-HE24-C7-R0 | 48V PWM | 1 | 10.0 Round |

- » Heat transfer capacity up to 97W per $\Delta T = 1^{\circ}\text{C}$
- » 11.5 (L) x 12.0 (W) x 2.12 (H)" core size
- » ΔT = inlet liquid temperature - inlet air temperature
- » Weight: 4018g (8.9 lbs); Weight w/fan: 5791g (12.8 lbs)
- » Maximum pressure: 100 psi

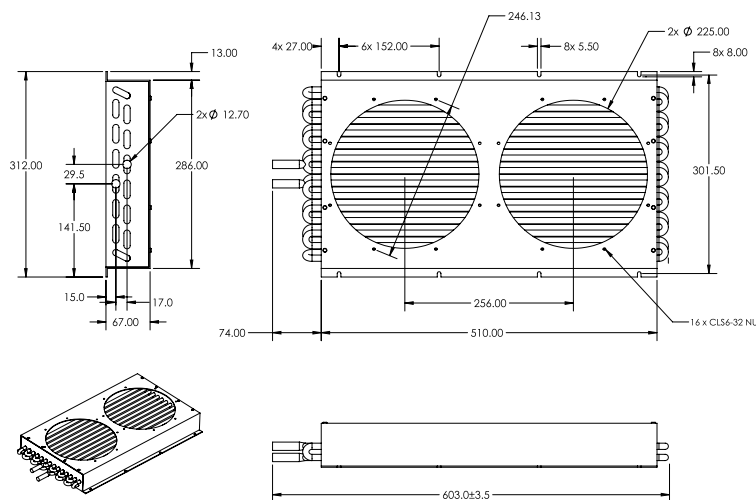


ATS-HE25 SERIES



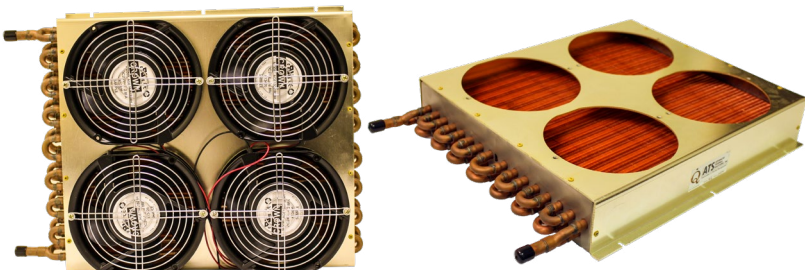
| MPN | FAN TYPE | # OF FANS | FAN SIZE (inches) |
|----------------|----------|-----------|-------------------|
| ATS-HE25-C1-R0 | NO FAN | 0 | N/A |
| ATS-HE25-C2-R0 | 12V | 2 | 10.0 Round |
| ATS-HE25-C3-R0 | 12V PWM | 2 | 10.0 Round |
| ATS-HE25-C4-R0 | 24V | 2 | 10.0 Round |
| ATS-HE25-C5-R0 | 24V PWM | 2 | 10.0 Round |
| ATS-HE25-C6-R0 | 48V | 2 | 10.0 Round |
| ATS-HE25-C7-R0 | 48V PWM | 2 | 10.0 Round |

- » Heat transfer capacity up to 177W per $\Delta T = 1^{\circ}\text{C}$
- » 21.58 (L) x 12.0 (W) x 2.12 (H)" core size
- » ΔT = inlet liquid temperature - inlet air temperature
- » Weight: 7422g (16.4 lbs); Weight w/fan: 11012g (24.23 lbs)
- » Maximum pressure: 100 psi



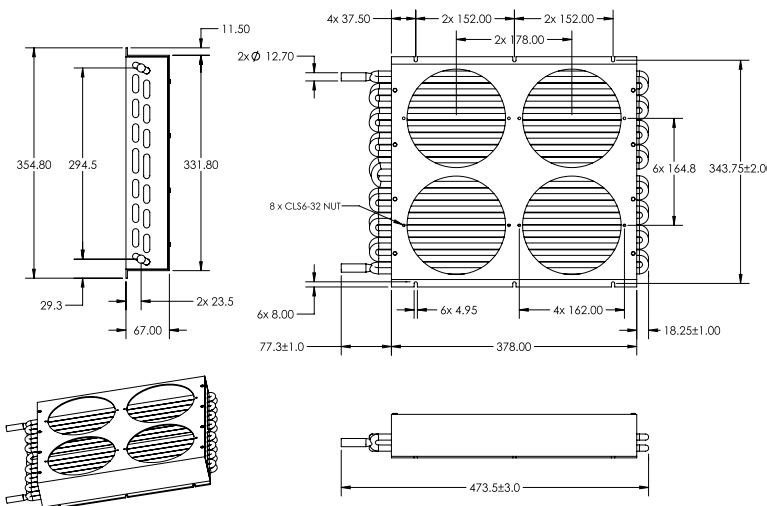


ATS-HE26 SERIES



- » Heat transfer capacity up to 250W per $\Delta T = 1^{\circ}\text{C}$
- » 17.52 (L) x 14.0 (W) x 2.63 (H)" core size
- » ΔT = inlet liquid temperature - inlet air temperature
- » Weight: 4018g (8.9 lbs); Weight w/fan: 5791g (12.8 lbs)
- » Maximum pressure: 100 psi

| MPN | FAN TYPE | # OF FANS | FAN SIZE (inches) |
|----------------|----------|-----------|-------------------|
| ATS-HE26-C1-R0 | NO FAN | 0 | N/A |
| ATS-HE26-C2-R0 | 12V | 4 | 6.75 Round |
| ATS-HE26-C3-R0 | 12V PWM | 4 | 6.75 Round |
| ATS-HE26-C4-R0 | 24V | 4 | 6.75 Round |
| ATS-HE26-C5-R0 | 24V PWM | 4 | 6.75 Round |
| ATS-HE26-C6-R0 | 48V | 4 | 6.75 Round |
| ATS-HE26-C7-R0 | 48V PWM | 4 | 6.75 Round |



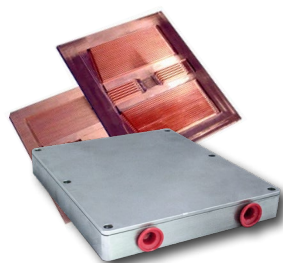
ADDITIONAL COMPONENTS DEPLOYED IN LIQUID COOLING LOOPS



Flow Meter



Leak Detector



Cold Plates



Chillers

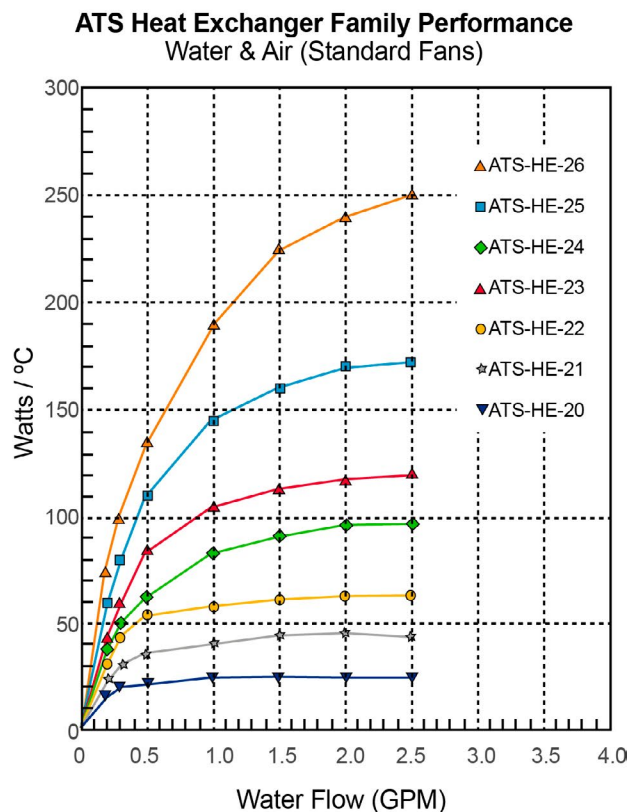
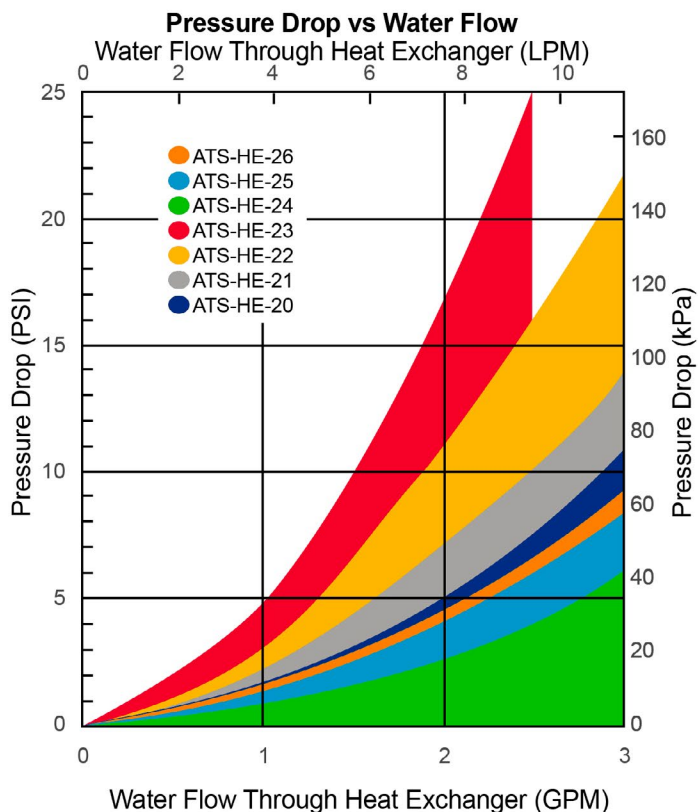
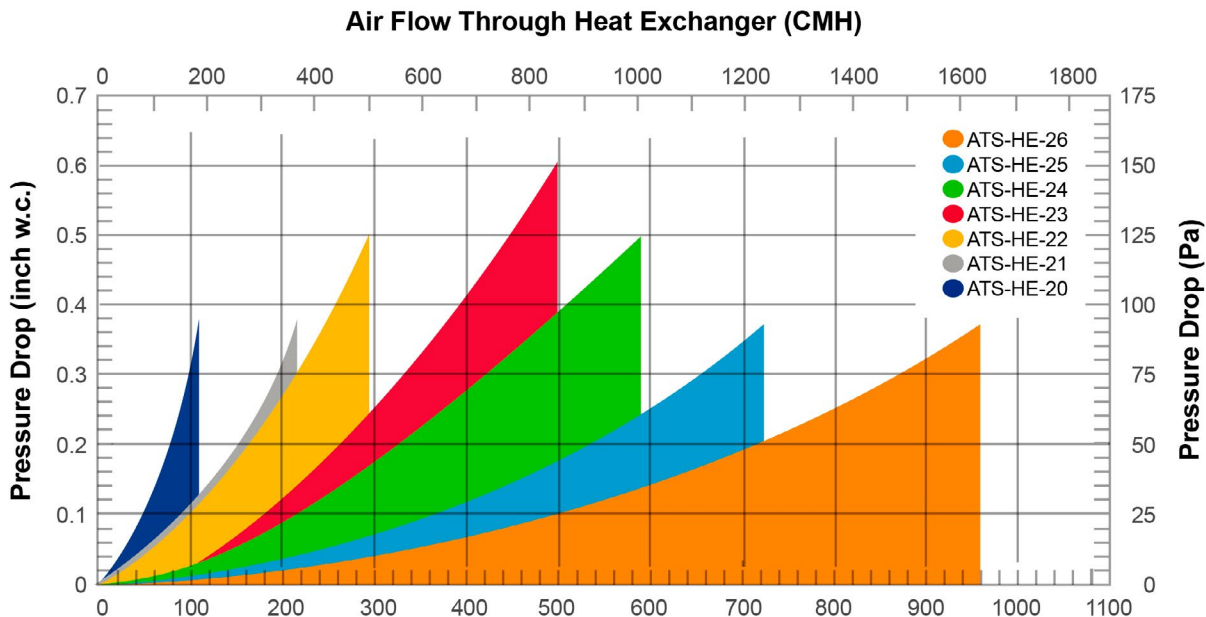


Heat Exchangers

ATS has the products needed to design a complete liquid cooling loop: **Cold Plates** to transfer and remove the heat from the source, **Heat Exchangers** to transfer heat from the liquid to the air with or without a fan, and **Chillers** to circulate and condition the fluid in the system. In addition, ATS offers **Flow Meters** to instantaneously measure the volumetric flow rate of the fluid in the system and **Leak Detectors** to notify users of any leaks in the system.



Heat Exchangers (cont'd)



Note: Performance curves are per $\Delta T = 1^\circ C$ | $\Delta T = \text{inlet liquid temperature} - \text{inlet air temperature}$

Mouser Electronics

Authorized Distributor

Click to View Pricing, Inventory, Delivery & Lifecycle Information:

Advanced Thermal Solutions:

[ATS-HE26-C2-R0](#) [ATS-HE-26](#) [ATS-HE20-C1-R0](#) [ATS-HE20-C2-R0](#) [ATS-HE20-C3-R0](#) [ATS-HE20-C4-R0](#) [ATS-HE20-C5-R0](#) [ATS-HE26-C7-R0](#) [ATS-HE25-C7-R0](#) [ATS-HE26-C1-R0](#) [ATS-HE26-C3-R0](#) [ATS-HE26-C4-R0](#) [ATS-HE26-C5-R0](#) [ATS-HE26-C6-R0](#) [ATS-HE25-C1-R0](#) [ATS-HE25-C2-R0](#) [ATS-HE25-C3-R0](#) [ATS-HE25-C4-R0](#) [ATS-HE25-C5-R0](#) [ATS-HE25-C6-R0](#) [ATS-HE24-C2-R0](#) [ATS-HE24-C3-R0](#) [ATS-HE24-C4-R0](#) [ATS-HE24-C5-R0](#) [ATS-HE24-C6-R0](#) [ATS-HE24-C7-R0](#) [ATS-HE23-C3-R0](#) [ATS-HE23-C4-R0](#) [ATS-HE23-C5-R0](#) [ATS-HE23-C6-R0](#) [ATS-HE23-C7-R0](#) [ATS-HE24-C1-R0](#) [ATS-HE22-C4-R0](#) [ATS-HE22-C5-R0](#) [ATS-HE22-C6-R0](#) [ATS-HE22-C7-R0](#) [ATS-HE23-C1-R0](#) [ATS-HE23-C2-R0](#) [ATS-HE21-C5-R0](#) [ATS-HE21-C6-R0](#) [ATS-HE21-C7-R0](#) [ATS-HE22-C1-R0](#) [ATS-HE22-C2-R0](#) [ATS-HE22-C3-R0](#) [ATS-HE20-C6-R0](#) [ATS-HE20-C7-R0](#) [ATS-HE21-C1-R0](#) [ATS-HE21-C2-R0](#) [ATS-HE21-C3-R0](#) [ATS-HE21-C4-R0](#)

Данный компонент на территории Российской Федерации

Вы можете приобрести в компании MosChip.

Для оперативного оформления запроса Вам необходимо перейти по данной ссылке:

<http://moschip.ru/get-element>

Вы можете разместить у нас заказ для любого Вашего проекта, будь то серийное производство или разработка единичного прибора.

В нашем ассортименте представлены ведущие мировые производители активных и пассивных электронных компонентов.

Нашей специализацией является поставка электронной компонентной базы двойного назначения, продукции таких производителей как XILINX, Intel (ex.ALTERA), Vicor, Microchip, Texas Instruments, Analog Devices, Mini-Circuits, Amphenol, Glenair.

Сотрудничество с глобальными дистрибьюторами электронных компонентов, предоставляет возможность заказывать и получать с международных складов практически любой перечень компонентов в оптимальные для Вас сроки.

На всех этапах разработки и производства наши партнеры могут получить квалифицированную поддержку опытных инженеров.

Система менеджмента качества компании отвечает требованиям в соответствии с ГОСТ Р ИСО 9001, ГОСТ РВ 0015-002 и ЭС РД 009

Офис по работе с юридическими лицами:

105318, г.Москва, ул.Щербаковская д.3, офис 1107, 1118, ДЦ «Щербаковский»

Телефон: +7 495 668-12-70 (многоканальный)

Факс: +7 495 668-12-70 (доб.304)

E-mail: info@moschip.ru

Skype отдела продаж:

moschip.ru

moschip.ru_4

moschip.ru_6

moschip.ru_9