

**PLEASE CHECK WWW.MOLEX.COM FOR LATEST PART INFORMATION**

**Part Number:** [0009931000](#)  
**Status:** **Active**  
**Overview:** [kk](#)  
**Description:** 3.96mm (.156") Pitch KK® Crimp Terminal Housing, Friction Ramp, 210 Circuits, Glow Wire Compatible

**Documents:**

[3D Model](#) [Product Specification PS-99020-0087 \(PDF\)](#)  
[Drawing \(PDF\)](#) [RoHS Certificate of Compliance \(PDF\)](#)

**Agency Certification**

UL E29179

**General**

Product Family Crimp Housings  
 Series [3069](#)  
 Overview [kk](#)  
 Product Name KK®

**Physical**

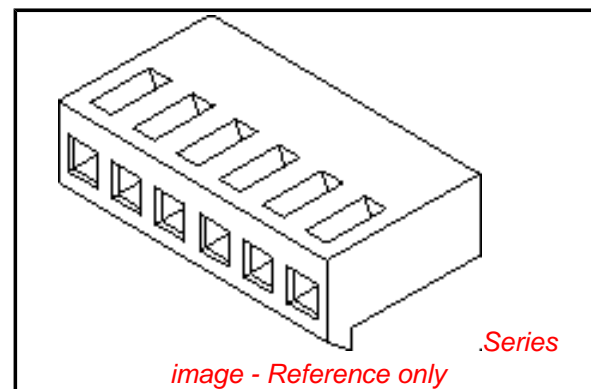
Circuits (maximum) 10  
 Circuits Detail 10  
 Color - Resin Natural  
 Flammability 94V-2  
 Gender Female  
 Glow-Wire Compliant Yes  
 Lock to Mating Part Yes  
 Material - Resin Nylon  
 Number of Rows 1  
 Packaging Type Bag  
 Panel Mount No  
 Pitch - Mating Interface (in) 0.156 In  
 Pitch - Mating Interface (mm) 3.96 mm  
 Temperature Range - Operating 0°C to +75°C

**Material Info**

Old Part Number 3069-G10

**Reference - Drawing Numbers**

Product Specification PS-99020-0087  
 Sales Drawing SD-3069-GN\*\*\*



**EU RoHS**

**ELV and RoHS Compliant**  
**REACH SVHC**  
 Not Reviewed  
**Halogen-Free Status**  
**Not Reviewed**

**China RoHS**



**Need more information on product environmental compliance?**

Email [productcompliance@molex.com](mailto:productcompliance@molex.com)  
 For a multiple part number RoHS Certificate of Compliance, [click here](#)

Please visit the [Contact Us](#) section for any non-product compliance questions.

**Search Parts in this Series**

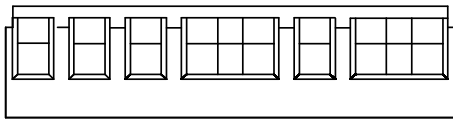
[3069Series](#)

**Mates With**

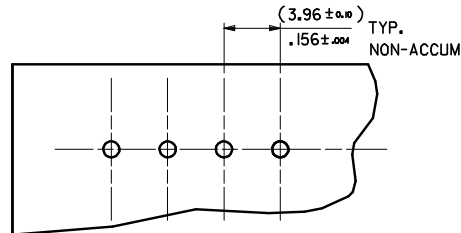
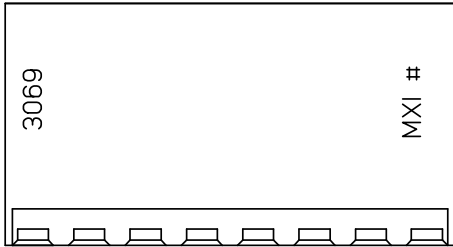
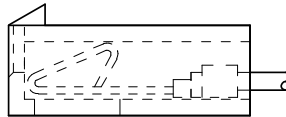
[2220](#) , [3190](#) , [3192](#) , [3243](#) , [3246](#) , [A4042](#) ,  
[41661](#) , [41662](#) , [41671](#) , [41672](#) , [41681](#) ,  
[41682](#) , [41701](#) , [41711](#) , [41721](#) , [41741](#) ,  
[41761](#) , [41771](#) , [41772](#) , [41791](#) , [41792](#) ,  
[42441](#) , [42461](#) , [42471](#) , [42491](#) , [42492](#)

**Use With**

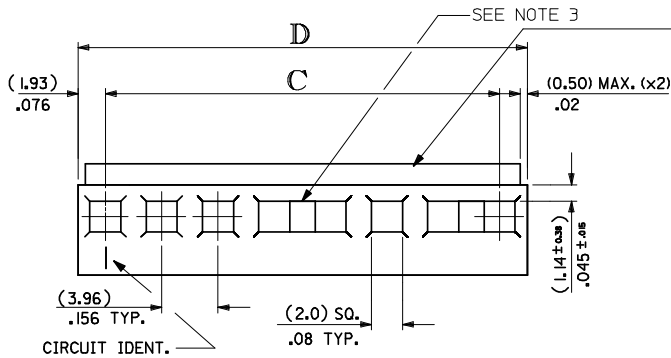
[2478](#) Crimp Terminals for 18-24 AWG, [2578](#)  
 Crimp Terminals for 22-26 AWG



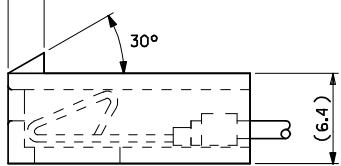
OPTIONAL WINDOW DETAIL



RECOMMENDED P/C BOARD



LOCKING RAMP OPTIONAL  
(2.5)  
.10



DIRECTION OF TERMINAL INSERTION.

ENG. No. DESIGNATION

3069 - G N 2

'G' GWT (750°C) PA66 BALCK

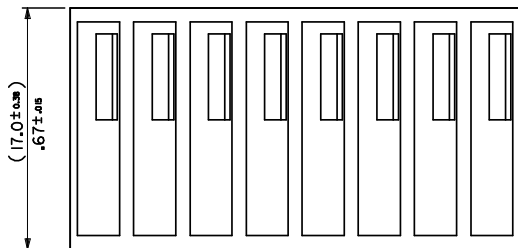
'2' INDICATES HOUSING WITHOUT RAMP  
'BLANK' INDICATES HOUSING WITH RAMP

NO. OF CKT'S

No. OF CCTS.	C	D	No. OF CCTS.	C	D
14	(51.51 ± 0.03) 2.028 ± 0.01	(55.37 ± 0.03) 2.180 ± 0.01	2	(3.96 ± 0.03) .156 ± 0.004	(7.82 ± 0.03) .308 ± 0.01
15	(55.47 ± 0.03) 2.184 ± 0.01	(59.33 ± 0.03) 2.336 ± 0.01	3	(7.92 ± 0.03) .312 ± 0.005	(11.79 ± 0.03) .464 ± 0.01
16	(59.44 ± 0.03) 2.340 ± 0.01	(63.30 ± 0.03) 2.492 ± 0.01	4	(11.89 ± 0.03) .620 ± 0.005	(15.75 ± 0.03) .620 ± 0.01
17	(63.40 ± 0.03) 2.496 ± 0.01	(67.26 ± 0.03) 2.648 ± 0.01	5	(15.85 ± 0.03) .624 ± 0.005	(19.71 ± 0.03) .776 ± 0.01
18	(67.36 ± 0.03) 2.652 ± 0.01	(71.22 ± 0.03) 2.804 ± 0.01	6	(19.81 ± 0.03) .780 ± 0.005	(23.67 ± 0.03) .932 ± 0.01
19	(71.32 ± 0.03) 2.808 ± 0.01	(75.18 ± 0.03) 2.960 ± 0.01	7	(23.77 ± 0.03) .936 ± 0.005	(27.64 ± 0.03) 1.088 ± 0.01
20	(75.29 ± 0.03) 2.964 ± 0.01	(79.15 ± 0.03) 3.116 ± 0.01	8	(27.74 ± 0.03) 1.092 ± 0.005	(31.60 ± 0.03) 1.244 ± 0.01
			9	(31.70 ± 0.03) 1.248 ± 0.005	(35.56 ± 0.03) 1.400 ± 0.01
			10	(35.66 ± 0.03) 1.404 ± 0.005	(39.52 ± 0.03) 1.556 ± 0.01
			11	(39.62 ± 0.03) 1.560 ± 0.005	(43.48 ± 0.03) 1.712 ± 0.01
			12	(43.59 ± 0.03) 1.716 ± 0.005	(47.45 ± 0.03) 1.868 ± 0.01
			13	(47.55 ± 0.03) 1.872 ± 0.005	(51.41 ± 0.03) 2.024 ± 0.01

NOTES:

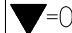
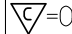
- FOR USE WITH TERMINAL No. 2478 OR 2578
- ASSEMBLED CONNECTOR MATES WITH (1.14)/0.045 SQUARE OR ROUND PIN.
- EXTENDED PIN ENTRY WINDOWS ARE POSSIBLE.



<b>WORKMANAGER ERROR</b> EC NO: E2008-0403 DRWN: BRUTTLE 2008/01/30 CHKD: 2008/01/30 APPR: BMAGUIRE 2008/01/30	QUALITY SYMBOLS ▽=0 ▽=0	GENERAL TOLERANCES (UNLESS SPECIFIED)		DIMENSION STYLE <b>MM/IN</b>		SCALE <b>4:1</b>	DESIGN UNITS <b>METRIC</b>	THIRD ANGLE PROJECTION
		4 PLACES ± --- ± --- 3 PLACES ± --- ± .010 2 PLACES ± 0.25 ± .014 1 PLACE ± 0.35 ± --- ANGULAR ± 2 °	mm INCH DRAWN BY DATE BRIAN RUTTLE 10/12/2007 CHECKED BY DATE B. MAGUIRE 12/12/2007 APPROVED BY DATE B. MAGUIRE 14/12/2007 MATERIAL NO.	TITLE <b>HOUSING KK CONNECTOR (3.96)/0.156 CRIMP 750 GLOW WIRE VERSION</b>	MOLEX INCORPORATED	SHEET NO. <b>1 OF 2</b>		
DRAFT WHERE APPLICABLE MUST REMAIN WITHIN DIMENSIONS		SEE CHART		DOCUMENT NO. <b>SD-3069-GN***</b>		THIS DRAWING CONTAINS INFORMATION THAT IS PROPRIETARY TO MOLEX INCORPORATED AND SHOULD NOT BE USED WITHOUT WRITTEN PERMISSION		

No. OF CCTS.	ENG. No.	PART No.	LOCKING RAMP
2	3069-G02	09-93-0200	YES
	↑ -G022	↑ -94-0200	NO
3	-G03	-93-0300	YES
	-G032	-94-0300	NO
4	-G04	-93-0400	YES
	-G042	-94-0400	NO
5	-G05	-93-0500	YES
	-G052	-94-0500	NO
6	-G06	-93-0600	YES
	-G062	-94-0600	NO
7	-G07	-93-0700	YES
	-G072	-94-0700	NO
8	-G08	-93-0800	YES
	-G082	-94-0800	NO
9	-G09	-93-0900	YES
	-G092	-94-0900	NO
10	-G10	-93-1000	YES
	-G102	-94-1000	NO
11	-G11	-93-1100	YES
	-G112	-94-1100	NO
12	-G12	-93-1200	YES
	-G122	-94-1200	NO
13	-G13	-93-1300	YES
	-G132	-94-1300	NO
14	-G14	-93-1400	YES
	-G142	-94-1400	NO
15	-G15	-93-1500	YES
	-G152	-94-1500	NO
16	-G16	-93-1600	YES
	-G162	-94-1600	NO
17	-G17	-93-1700	YES
	-G172	-94-1700	NO
18	-G18	-93-1800	YES
	-G182	-94-1800	NO
19	-G19	-93-1900	YES
	-G192	-94-1900	NO
20	↓ -G20	↓ -93-2000	YES
	3069-G202	09-94-2000	NO

SEE SHEET 1  
 EC NO: E2008-0403  
 DRWN: BRUTTLE 2008/01/30  
 CHKD:  
 APPR: BMAGUIRE 2008/01/30

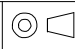

QUALITY SYMBOLS  
 = 0  
 = 0

2008/01/30  
 GENERAL TOLERANCES (UNLESS SPECIFIED)  

	mm	INCH
4 PLACES	± ---	± ---
3 PLACES	± ---	± .010
2 PLACES	± 0.25	± .014
1 PLACE	± 0.35	± ---

 ANGULAR ± 2 °  
 DRAFT WHERE APPLICABLE  
 MUST REMAIN WITHIN DIMENSIONS

DIMENSION STYLE  
 MM/IN  
 DRAWN BY: BRIAN RUTTLE  
 DATE: 10/12/2007  
 CHECKED BY: B. MAGUIRE  
 DATE: 12/12/2007  
 APPROVED BY: B. MAGUIRE  
 DATE: 14/12/2007  
 MATERIAL NO.  
 SEE CHART

SCALE: 1:1  
 DESIGN UNITS: METRIC  
 THIRD ANGLE PROJECTION  
 TITLE: HOUSING KK CONNECTOR (3.96)/0.156 CRIMP 750 GLOW WIRE VERSION  
 MOLEX INCORPORATED  
 DOCUMENT NO.: SD-3069-GN\*\*\*  
 SHEET NO.: 2 OF 2  
 THIS DRAWING CONTAINS INFORMATION THAT IS PROPRIETARY TO MOLEX INCORPORATED AND SHOULD NOT BE USED WITHOUT WRITTEN PERMISSION

## Данный компонент на территории Российской Федерации

### Вы можете приобрести в компании MosChip.

Для оперативного оформления запроса Вам необходимо перейти по данной ссылке:

<http://moschip.ru/get-element>

Вы можете разместить у нас заказ для любого Вашего проекта, будь то серийное производство или разработка единичного прибора.

В нашем ассортименте представлены ведущие мировые производители активных и пассивных электронных компонентов.

Нашей специализацией является поставка электронной компонентной базы двойного назначения, продукции таких производителей как XILINX, Intel (ex.ALTERA), Vicor, Microchip, Texas Instruments, Analog Devices, Mini-Circuits, Amphenol, Glenair.

Сотрудничество с глобальными дистрибьюторами электронных компонентов, предоставляет возможность заказывать и получать с международных складов практически любой перечень компонентов в оптимальные для Вас сроки.

На всех этапах разработки и производства наши партнеры могут получить квалифицированную поддержку опытных инженеров.

Система менеджмента качества компании отвечает требованиям в соответствии с ГОСТ Р ИСО 9001, ГОСТ РВ 0015-002 и ЭС РД 009

### Офис по работе с юридическими лицами:

105318, г.Москва, ул.Щербаковская д.3, офис 1107, 1118, ДЦ «Щербаковский»

Телефон: +7 495 668-12-70 (многоканальный)

Факс: +7 495 668-12-70 (доб.304)

E-mail: [info@moschip.ru](mailto:info@moschip.ru)

Skype отдела продаж:

moschip.ru

moschip.ru\_4

moschip.ru\_6

moschip.ru\_9