

4

3

2

1

THIS DRAWING IS UNPUBLISHED.

RELEASED FOR PUBLICATION

© COPYRIGHT

ALL RIGHTS RESERVED.

LOC DIST


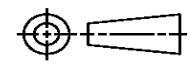
REVISIONS

P	LTR	DESCRIPTION	DATE	DWN	APVD

REPLACED BY OCEAN STYLE APPLICATOR PART NUMBER

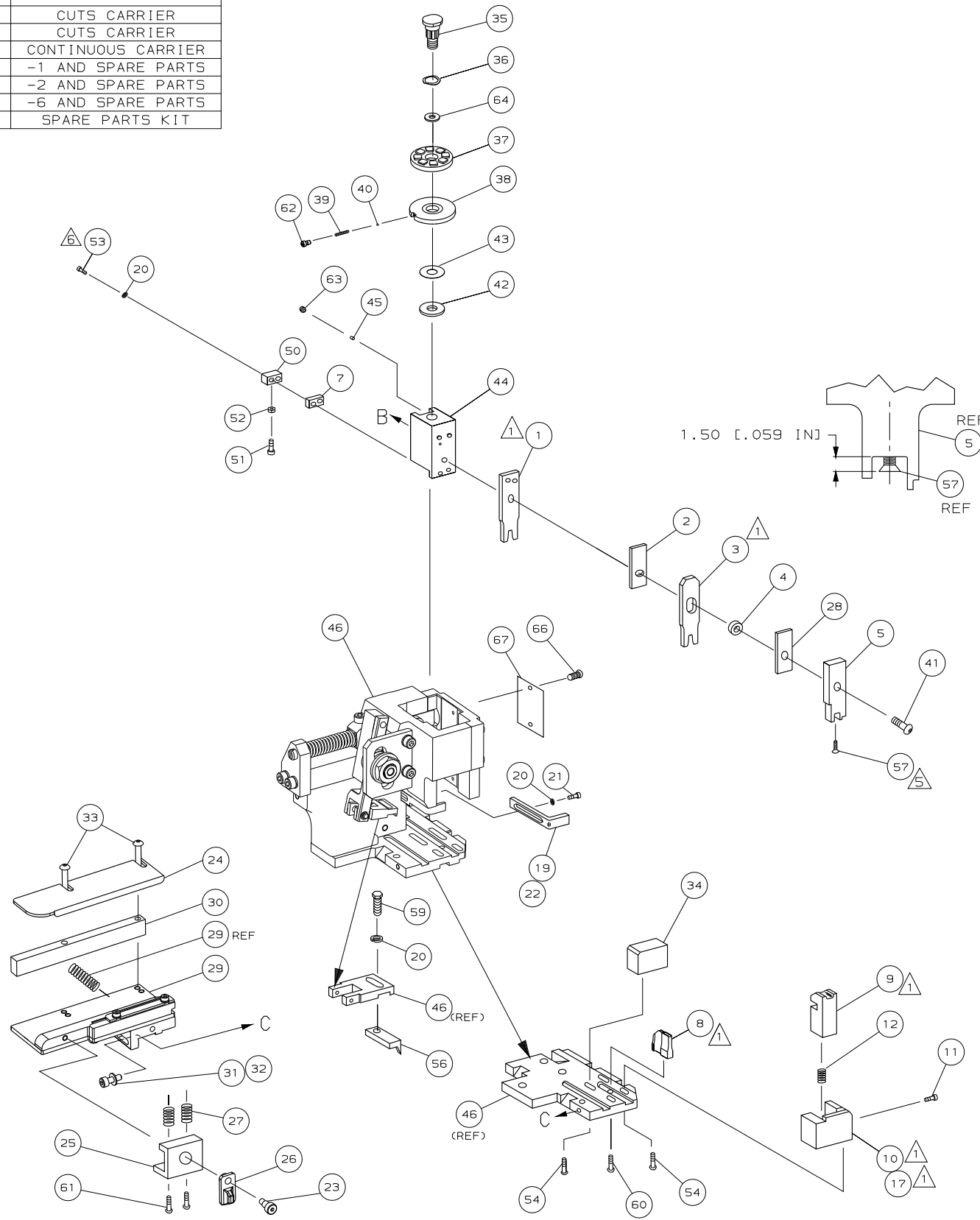
FOR REPLACEMENT PARTS FOR APPLICATOR REFER TO ADDITIONAL PAGE(S). SPARE PARTS KIT (IF LISTED) WILL REMAIN AVAILABLE.

THE REPLACEMENT OCEAN STYLE APPLICATOR HAS THE SAME TERMINATOR/PRESS INTERFACE AS APPLICATOR

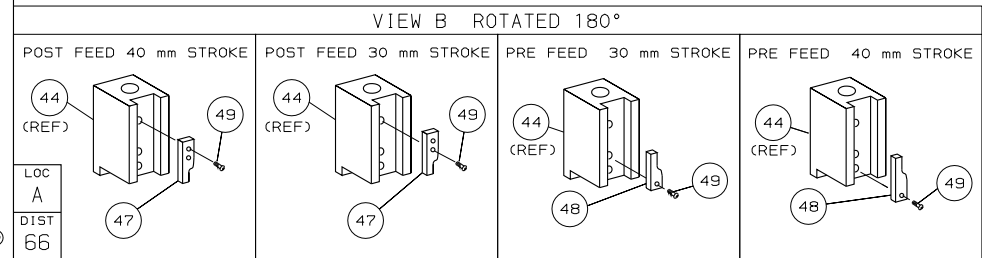
THIS DRAWING IS A CONTROLLED DOCUMENT.		DWN	 TE Connectivity		
DIMENSIONS:		CHK			
TOLERANCES UNLESS OTHERWISE SPECIFIED:		APVD	NAME		
 <ul style="list-style-type: none"> 0 PLC ± 1 PLC ± 2 PLC ± 3 PLC ± 4 PLC ± ANGLES ± 		PRODUCT SPEC	RESTRICTED TO		
		APPLICATION SPEC	SIZE	CAGE CODE	DRAWING NO
MATERIAL	FINISH	WEIGHT	A3	C-	
		SCALE	SHEET	OF	REV

PART NUMBER	REV	FIRST USED	TERMINATOR	FEED TYPE	DESCRIPTION
1426284-1	D	-	LEADMAKER	MECH POST FEED	CUTS CARRIER
1426284-2	D	-	BENCH	MECH PRE FEED	CUTS CARRIER
1426284-6	D	-	LEADMAKER	MECH POST FEED	CONTINUOUS CARRIER
7-1426284-1	D	-	LEADMAKER	MECH POST FEED	-1 AND SPARE PARTS
7-1426284-2	D	-	BENCH	MECH PRE FEED	-2 AND SPARE PARTS
7-1426284-6	D	-	LEADMAKER	MECH POST FEED	-6 AND SPARE PARTS
7-1426284-7	A	-	-	-	SPARE PARTS KIT

CRIMP DATA AMP TERMINAL AMP CRIMP SPECS			
TERMINAL NAME: TAB 2.8 X 0.8 CONTACT			
CRIMP	SIZE	TYPE	RANGE
WIRE	1.57 [.062 IN]	F	0.20mm ² - 0.50mm ²
INSUL	3.94 [.155 IN]	0	3.40 MAX [.134 IN MAX]
WIRE STRIP LENGTH		APPL INSTRUCTION	
3.70-4.30 [.146-.169 IN]		408-8322	
TERMINAL		FEED	
APPL SPEC 114-18051		14.50 [.571 IN]	
TERMINALS APPLIED			
TERMINAL	SEAL		
965982	828904	-	-
-	-	-	-
-	-	-	-
-	-	-	-
-	-	-	-
-	-	-	-
-	-	-	-
WIRE SIZE	CRIMP HEIGHT	PIN PN AND LENGTH [IN]	
mm ² AWG			
0.50mm ²	1.12 ±0.03 [.044 ±.001 IN]	2-354779-9 [.3135]	
0.35mm ²	1.05 ±0.03 [.041 ±.001 IN]	3-354779-7 [.3175]	
0.25mm ²	1.00 ±0.03 [.039 ±.001 IN]	4-354779-1 [.3195]	
0.20mm ²	0.98 ±0.03 [.039 ±.001 IN]	4-354779-1 [.3195]	



- 1 RECOMMENDED SPARE PARTS.
- 2 GREASE RAM, CAM, CAM FOLLOWER AND FEED ROD LIGHTLY.
- 3 LUBRICATE DAILY PER THE APPLICATOR INSTRUCTION SHEET SUPPLIED WITH THE APPLICATOR.
- 4 THIS APPLICATOR APPLIES TERMINAL WITH A SEAL. INSULATION DIA QUOTED IS OUTSIDE DIAMETER OF SEAL. WIRE INSULATION DIA IS DEPENDENT ON SEAL BEING APPLIED.
- 5 APPLY TORQ-SEAL IN ALLEN SOCKET TO FILL HOLE AFTER FLAT HD HAS BEEN ADJUSTED TO CORRECT HEIGHT AT QUALIFICATION. APPLY #1-23419-5 LOC-TITE TO THREADS.
- 6 CUT TO LENGTH AT ASSY.



QTY	REQD	PER	ASSY	PARTS LIST	ITEM NO			
-	1	1	1	1	1	1426284	PRINT, APPLICATOR LOG SHEET	73
-	1	1	1	1	1	1338705-1	DOCUMENTATION PACKAGE	71
-	1	1	1	1	1			70
-	1	1	1	1	1			69
-	1	1	1	1	1			68
-	1	1	1	1	1	461264-1	PLATE, IDENTIFICATION	67
-	2	2	2	2	2	21017-2	SCR, DRIVE (#2x.19) ID PLATE	66
-	1	1	1	1	1			65
-	1	1	1	1	1	986950-1	WASHER, FLAT PRECISION	64
-	1	1	1	1	1	3-18031-0	SCR, SKT SET (M6X6) RAM	63
-	1	1	1	1	1	18023-9	SCR, SHC (M4X6) INS DISC	62
-	2	2	2	2	2	1-18024-5	SCR, BHC (M5X25) DRAG	61
-	1	1	1	1	1	18024-7	SCR, BHC (M4X10) ANVIL	60
-	1	1	1	1	1	5-18022-2	SCR, HEX (M4X8) FEED FINGER	59
-	1	1	1	1	1			58
-	1	1	1	1	1	985575-3	SCR, FHC (M3X10) DEP	57
-	1	1	1	1	1	1338685-1	PAWL, FEED	56
-	1	1	1	1	1			55
-	4	4	4	4	4	18024-8	SCR, BHC (M4X12) SHEAR HOLDER	54
-	2	2	2	2	2	1-18023-3	SCR, SHC (M4X16) TERM HLD DWN	53
-	1	1	1	1	1	18030-1	NUT, HEX (M3) HOLD DOWN	52
-	1	1	1	1	1	811242-5	BUMPER, HOLDDOWN	51
-	1	1	1	1	1	690753-2	SPACER, TONKER	50
-	1	1	1	1	1	18024-3	SCR, BHC (M3X10) CAM	49
-	-	1	-	-	-	1338675-1	CAM, PRE FEED 30 & 40 mm ST	48
-	1	-	1	-	1	1338676-1	CAM, POST FEED 30 & 40 mm ST	47
-	1	1	1	1	1	1320999-3	APPLICATOR BASIC SUBASSY	46
-	1	1	1	1	1	690191-1	PLUG, NYLON	45
-	1	1	1	1	1	1338660-1	RAM	44
-	1	1	1	1	1	690125-1	WASHER, LAMINATED	43
-	1	1	1	1	1	690124-1	WASHER, RAM	42
-	1	1	1	1	1	2-18024-6	SCR, BHC (M8X25) RAM	41
-	1	1	1	1	1	23241-1	BALL, STEEL	40
-	1	1	1	1	1	2-22278-7	SPRING, COMPRESSION	39
-	1	1	1	1	1	1320922-1	DISC, INSULATION	38
-	1	1	1	1	1	354777-1	WIRE DISC, PLASTIC	37
-	1	1	1	1	1	22480-5	WASHER, SPRING	36
-	1	1	1	1	1	690212-1	POST, RAM	35
-	1	1	1	1	1	2-1320934-8	SUPPORT, TERMINAL	34
-	2	2	2	2	2	1-18024-0	SCR, BHC (M4X20) STRIP GUIDE	33
-	1	1	1	1	1	18027-2	WASHER, FLAT (M4)	32
-	1	1	1	1	1	1-18023-2	SCR, SKT CAP (M4X12) MOUNT BLOCK	31
-	1	1	1	1	1	1320908-1	SPACER, STRIP GUIDE	30
-	1	1	1	1	1	1633073-2	STRIP GUIDE PLATE ASSY	29
-	1	1	1	1	1	1-455888-9	SPACER, FRONT SHEAR DEP	28
-	2	2	2	2	2	1-22284-0	SPRING, DRAG	27
-	1	1	1	1	1	356835-1	LEVER, DRAG RELEASE	26
-	1	1	1	1	1	240792-1	DRAG, TERMINAL	25
-	1	1	1	1	1	1320928-1	PLATE, STRIP GUIDE	24
-	1	1	1	1	1	980371-4	SCR, SHC SHLD	23
-	1	-	1	-	1	690472-2	STRIPPER	22
-	1	1	1	1	1	1-18023-1	SCR, SHC (M4X10) STRIPPER	21
-	4	4	4	4	4	18025-2	WASHER, LOCK (M4) STRIPPER	20
-	-	1	-	-	-	690472-1	STRIPPER	19
-	-	-	-	-	-			18
-	1	-	-	-	-	1338684-2	HOLDER, SHEAR, FRONT (NO-CUT)	17
-	-	-	-	-	-			16
-	-	-	-	-	-			15
-	-	-	-	-	-			14
-	-	-	-	-	-			13
-	1	1	1	1	1	5-22280-0	SPRING, SHEAR	12
-	1	1	1	1	1	356885-5	STOP, SHEAR	11
-	-	1	1	-	1	1-1320921-0	HOLDER, SHEAR, FRONT (CUT)	10
-	1	1	1	1	1	318707-2	SHEAR, FLOAT (FRONT)	9
-	1	2	2	1	1	2-1333202-7	ANVIL	8
-	1	1	1	1	1	4-240641-0	SPACER, DEPRESSOR (REAR)	7
-	-	-	-	-	-			6
-	1	1	1	1	1	1338680-2	DEPRESSOR, SHEAR (FRONT)	5
-	1	1	1	1	1	238011-2	SPACER, BLOCK CRIMPER	4
-	1	2	2	1	1	3-456135-7	CRIMPER, INSULATION	3
-	1	1	1	1	1	455888-8	SPACER, CRIMPER	2
-	1	2	2	1	1	1-456403-3	CRIMPER, WIRE	1

REAR STRIP GUIDE POSITION.

D	ECR-06-002781	GB	2-06
C	ECN 0150-1337-03	TE	12-03
B	0150-0270-02	CE	MAR02
A	SEE ECN 015A-0079-02	LJL	FEB02
P	REVISION RECORD	APP	DATE

DIMENSIONS: mm [INCHES] MATL - HT TR - FIN -
 DO NOT SCALE PRINT.
 TOLERANCES UNLESS OTHERWISE SPECIFIED.
 1 PLC DEC ±0.5 [.02 IN]
 2 PLC DEC ±-
 3 PLC DEC ±-
 ANGLES ±-
 SURF TEXTURE: ✓
 REMOVE BURRS, BREAK SHARP EDGES RO.38 MAX

NAME: SIDE FEED HD-1 APPLICATOR MACHINE REF: HD-1 APPL
 SCALE: D DWG NO: 1426284 SHEET: 1 OF 1 REV: D
 CUSTOMER AND ASSEMBLY DRAWING

Данный компонент на территории Российской Федерации

Вы можете приобрести в компании MosChip.

Для оперативного оформления запроса Вам необходимо перейти по данной ссылке:

<http://moschip.ru/get-element>

Вы можете разместить у нас заказ для любого Вашего проекта, будь то серийное производство или разработка единичного прибора.

В нашем ассортименте представлены ведущие мировые производители активных и пассивных электронных компонентов.

Нашей специализацией является поставка электронной компонентной базы двойного назначения, продукции таких производителей как XILINX, Intel (ex.ALTERA), Vicor, Microchip, Texas Instruments, Analog Devices, Mini-Circuits, Amphenol, Glenair.

Сотрудничество с глобальными дистрибьюторами электронных компонентов, предоставляет возможность заказывать и получать с международных складов практически любой перечень компонентов в оптимальные для Вас сроки.

На всех этапах разработки и производства наши партнеры могут получить квалифицированную поддержку опытных инженеров.

Система менеджмента качества компании отвечает требованиям в соответствии с ГОСТ Р ИСО 9001, ГОСТ РВ 0015-002 и ЭС РД 009

Офис по работе с юридическими лицами:

105318, г.Москва, ул.Щербаковская д.3, офис 1107, 1118, ДЦ «Щербаковский»

Телефон: +7 495 668-12-70 (многоканальный)

Факс: +7 495 668-12-70 (доб.304)

E-mail: info@moschip.ru

Skype отдела продаж:

moschip.ru

moschip.ru_4

moschip.ru_6

moschip.ru_9