

Control Knobs

INSTRUMENT KNOBS



5200E, 5205E



5210E, 5220E



5240E, 5250E



5300E



5302E



5304E



5450E



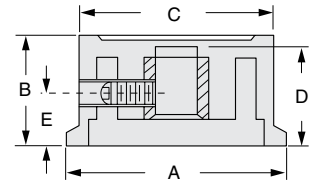
5475E

FEATURES

- Phenolic material provides heat and impact resistance for durability
- Can be customized with decorative inlays, indicator lines, or slots
- Engraving, hot stamping, and pad printing available for a distinct appearance

| Ohmite Part | Dimensions (inches) | | | | | Set screw | Shaft hole* | Finish** |
|-------------|---------------------|--------|-------|-------|-------|-----------|-------------|----------|
| | A | B | C | D | E | | | |
| 5200E | 25/32 | 15/32 | 21/32 | 13/32 | 7/32 | M3 x 0.5 | BB | SDL |
| 5205E | 1 | 27/32 | 29/32 | 1/2 | 37/64 | M4 x 0.7 | BB | SDL |
| 5210E | 19/32 | 11/32 | 15/32 | 33/64 | 21/32 | M4 x 0.7 | BB | SDL |
| 5220E | 13/4 | 115/32 | 11/2 | 45/64 | 13/16 | M4 x 0.7 | BB | SDL |
| 5240E | 19/32 | 35/64 | 31/64 | 27/64 | 23/64 | M3 x 0.5 | BB | L |
| 5250E | 15/16 | 25/32 | 3/4 | 19/32 | 19/32 | M4 x 0.7 | BB | L |
| 5300E | 17/32 | 5/8 | 3/8 | 7/32 | 7/16 | 6-32 | PH | SCL |
| 5302E | 25/32 | 5/8 | 17/32 | 17/32 | 9/32 | 8-32 | PH | SCL |
| 5304E | 11/32 | 11/16 | 7/8 | 17/32 | 9/32 | 8-32 | PH | SCL |
| 5450E | 11/16 | 13/32 | 5/8 | 11/32 | 3/16 | 8-32 | PH | - |
| 5475E | 1 | 1/2 | 15/16 | 7/16 | 9/32 | 8-32 | PH | - |

*PH=Plain Hole BB=Brass Bushing **SDL=Silver Disc Lined; L=Lined; SCL=Silver Cap Lined



Material type: Thermoset
Inset diam.: 1/4 in.

POINTER KNOBS



5400E



5470E



5500E, 5520E,
5521E



5510E, 5511E



5522E



5600E, 5601E, 5602E



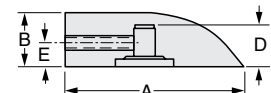
5610E

FEATURES

- Phenolic material provides heat and impact resistance for durability
- Terrific range of styles and sizes
- Indicator line available on several of the pointer knobs for precise settings
- Samples available

| Ohmite Part | Dimensions (inches) | | | | Set screw | Insert diam. | Shaft hole* | Finish** |
|-------------|---------------------|-------|-------|------|-----------|--------------|-------------|----------|
| | A | B | D | E | | | | |
| 5400E | 27/32 | 13/32 | 11/32 | 3/16 | 8-32 | 1/4 | PH | - |
| 5470E | 1 | 1/2 | 7/16 | 9/32 | 8-32 | 1/4 | PH | L |
| 5500E | 1 1/8 | 9/16 | 9/32 | 9/32 | 8-32 | 1/4 | PH | L |
| 5510E | 3/4 | 9/16 | 13/32 | 7/32 | 8-32 | 1/4 | PH | L |
| 5511E | 3/4 | 9/16 | 7/16 | - | - | 1/4*** | Spring | L |
| 5520E | 1 1/2 | 3/4 | 5/8 | 5/16 | 8-32 | 1/4 | PH | L |
| 5521E | 1 1/2 | 3/4 | 7/16 | 5/16 | 8-32 | 1/4 | BB | L |
| 5522E | 1 1/8 | 5/8 | 7/16 | 9/32 | 8-32 | 1/4 | PH | L |
| 5600E | 1 7/32 | 5/8 | 1/2 | 9/32 | 8-32 | 1/4 | PH | - |
| 5601E | 1 7/32 | 5/8 | 1/2 | 9/32 | 8-32 | 1/4 | PH | L |
| 5602E | 1 7/32 | 5/8 | 9/32 | 9/32 | 8-32 | 1/4 | BB | L |
| 5610E | 1 3/16 | 1/2 | 7/16 | 7/32 | 8-32 | 1/4 | PH | - |

*PH=Plain Hole BB=Brass Bushing **L=Lined ***1/4" flatted to 5/32"



Material type: Thermoset

Control Knobs

SKIRTED KNOBS

FEATURES

- Available in phenolic to provide appearance, strength, and heat resistance for a variety of applications
- Sizes, shapes, decorative inlays, and graphics to enhance your products
- Engraving, hot stamping, and pad printing available
- Skirt adds level of decoration
- Samples available



| Ohmite Part | Dimensions (inches) | | | | | Set screw | Shaft hole* | Finish** |
|-------------|---------------------|--------|--------|-------|------|-----------|-------------|----------|
| | A | B | C | D | E | | | |
| 5700E | 1/2 | 5/8 | 15/32 | 1/2 | 3/16 | 6-32 | PH | - |
| 5701E | 1/2 | 5/8 | 15/32 | 1/2 | 3/16 | 6-32 | PH | L |
| 5710E | 3/4 | 1/2 | 17/32 | 13/32 | 7/32 | 8-32 | PH | L |
| 5713E | 1 1/8 | 5/8 | 13/16 | 1/2 | 9/32 | 8-32 | PH | L |
| 5719E | 1 1/8 | 5/8 | 1 1/4 | 1/2 | 9/32 | 8-32 | BB | L |
| 5730E | 1 1/2 | 7/8 | 1 1/64 | 3/4 | 9/32 | 8-32 | PH | SDL |
| 5740E | 2 1/32 | 15/16 | 1 3/8 | 13/16 | 5/16 | 8-32 (2) | PH | SDL |
| 5800E | 1 1/2 | 1 1/16 | 5/8 | 9/16 | 9/32 | 8-32 | PH | L |

*PH=Plain Hole BB=Brass Bushing
**L=Lined SD=Silver Disc SDL=Silver Disc Lined



Material type: Thermoset
Inset diam.: 1/4 in.

TRANSILLUMINATED/SOFT TOUCH KNOBS

FEATURES

- Soft thermoplastic elastomer
- Two shot molding process enables multiple materials to be embedded into one part
- Available in black TPE over white or clear indicator to provide comfort and style to your application
- Call for any other color or combination
- Matte finish



5940E, 5920E, 5930E

| Ohmite Part | Dimensions (inches) | | | | |
|-------------------------|---------------------|-------|---------|-------|------|
| | A | B | C | D | E |
| Soft Touch Knobs | | | | | |
| 5940E | 1 3/8 | 27/32 | 1 3/8 | 23/32 | 1/4 |
| 5920E | 1 5/8 | 61/64 | 1 5/8 | 7/8 | 9/32 |
| 5930E | 1 57/64 | 1 | 1 57/64 | 7/8 | 5/16 |



5941E, 5921E, 5931E

| Ohmite Part | Dimensions (inches) | | | | |
|-------------------------------|---------------------|-------|---------|-------|------|
| | A | B | C | D | E |
| Transilluminated Knobs | | | | | |
| 5941E | 1 3/8 | 27/32 | 1 3/8 | 23/32 | 1/4 |
| 5921E | 1 5/8 | 61/64 | 1 5/8 | 7/8 | 1/4 |
| 5931E | 1 57/64 | 1 | 1 57/64 | 7/8 | 9/32 |



Material type: Thermoplastic overmold
Inset diam.: 1/4 in.
Set screw: 8-32
Shaft hole: Brass bushing
Finish: Matte

CUSTOMIZATION



In order to save you time and money, Ohmite offers a wide array of secondary operations and finishing services. Most of our parts can be customized to your specific need. Our secondary operations and finishing services include:

- Hot Stamping
- Drilling
- Pad Printing
- Engraving
- Ultrasonic Welding
- Branding
- Paint Fill
- Decorative Pointers
- Machining
- Turning
- Tapping
- Bagging
- Buff and Polish
- Sand Blasting
- 3-D CAD Imaging
- Assembly
- Packaging
- Custom Color
- Matching
- Kitting
- Silk Screen
- Decorative Inlays
- Plating
- Vacuum Metalizing
- Paint Coatings

Данный компонент на территории Российской Федерации

Вы можете приобрести в компании MosChip.

Для оперативного оформления запроса Вам необходимо перейти по данной ссылке:

<http://moschip.ru/get-element>

Вы можете разместить у нас заказ для любого Вашего проекта, будь то серийное производство или разработка единичного прибора.

В нашем ассортименте представлены ведущие мировые производители активных и пассивных электронных компонентов.

Нашей специализацией является поставка электронной компонентной базы двойного назначения, продукции таких производителей как XILINX, Intel (ex.ALTERA), Vicor, Microchip, Texas Instruments, Analog Devices, Mini-Circuits, Amphenol, Glenair.

Сотрудничество с глобальными дистрибьюторами электронных компонентов, предоставляет возможность заказывать и получать с международных складов практически любой перечень компонентов в оптимальные для Вас сроки.

На всех этапах разработки и производства наши партнеры могут получить квалифицированную поддержку опытных инженеров.

Система менеджмента качества компании отвечает требованиям в соответствии с ГОСТ Р ИСО 9001, ГОСТ РВ 0015-002 и ЭС РД 009

Офис по работе с юридическими лицами:

105318, г.Москва, ул.Щербаковская д.3, офис 1107, 1118, ДЦ «Щербаковский»

Телефон: +7 495 668-12-70 (многоканальный)

Факс: +7 495 668-12-70 (доб.304)

E-mail: info@moschip.ru

Skype отдела продаж:

moschip.ru

moschip.ru_4

moschip.ru_6

moschip.ru_9