

FEATURES

- Ø 0.230 mm active area
- Low noise
- High speed
- Miniaturized

DESCRIPTION

The AD230-8-2G MINI is an Avalanche Photodiode Amplifier Hybrid containing a 0.042 mm² active area APD chip integrated with an internal transimpedance amplifier. Hermetically packaged in a TO-52 with a borosilicate glass window cap.

APPLICATIONS

- Lidar
- Analytical instruments
- Medical equipment

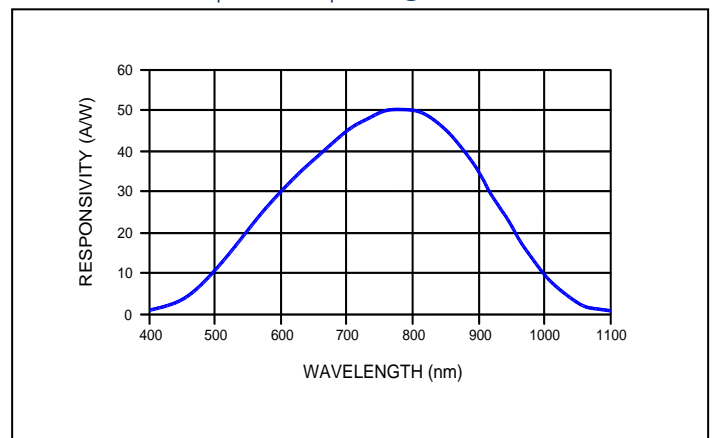
RoHS

2011/65/EU

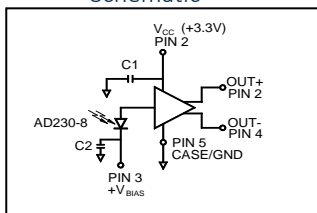
Absolute maximum ratings

Symbol	Parameter	Min	Max	Unit
T _{STG}	Storage Temp	-55	+125	°C
T _{OP}	Operating Temp	0	+60	°C
T _{SOLDERING}	Soldering Temp	-	+240	°C
P	Power Dissipation	-	360	mW
V _{CC}	Single Supply Voltage	+3.0	+5.5	V
I _{CC}	Supply Current	-	63	mA

Spectral response @ M = 100



Schematic



ELECTRO-OPTICAL CHARACTERISTICS @ 23° C (V_{CC} = single supply +3.3V, R_L = 100W unless otherwise specified)

Symbol	Characteristic	Test Condition	Min	Typ	Max	Unit
f _{-3dB}	Frequency Response	-3dB @ 800 nm	---	2	---	GHz
S	Sensitivity*	λ = 800 nm; M = 100	---	100	---	mV/μW
I _{CC}	Supply Current	Dark state	---	34	63	mA

* Sensitivity = APD responsivity (0.45 A/W X 100 gain) x TIA gain (2.5K)

These devices are sensitive to electrostatic discharge. Please use ESD precautions when handling.

Avalanche photodiode data @ 23 °C

Symbol	CharacteristicC	Test-condition	Min	Typ	Max	Unit
I_D	Dark Current	M = 100 (see note 1)	---	0.3	1.0	nA
C	Capacitance	M = 100 (see note 1)	---	1.2	---	pF
V_{BR}	Breakdown Voltage	$I_D = 2 \mu A$	80	---	120	V
	Temperature Coefficient of V_{BR}		---	0.45	---	V/K
	Responsivity	M = 100; $\lambda = 800 \text{ nm}$	45	50	---	A/W
Δf_{3dB}	Bandwidth	-3dB	---	2	---	GHz
t_r	Rise Time	M = 100; $\lambda = 905 \text{ nm}$; $R_L = 50 \Omega$	---	0.18	---	ns
	Optimum Gain		50	60	---	
	"Excess Noise" factor	M = 100	---	2.2	---	
	"Excess Noise" index	M = 100	---	0.2	---	
	Noise Current	M = 100	---	1.0	---	pA/Hz ^{1/2}
	Max Gain		200	---	---	
NEP	Noise Equivalent Power	M = 100; $\lambda = 800 \text{ nm}$	---	1.0×10^{-14}	---	W/Hz ^{1/2}

Note 1: Measurement conditions: Setup of photo current 1 nA at M = 1 and irradiated by a 880 nm, 80 nm bandwidth LED. Increase the photo current up to 100 nA, (M = 100) by internal multiplication due to an increasing bias voltage.

Transimpedance amplifier data @ 25 °C

($V_{CC} = +3.0 \text{ V}$ to 5.5 V , $T_A = 0^\circ\text{C}$ to 70°C , 100Ω load between OUT+ and OUT-. Typical values are at $T_A = 25^\circ\text{C}$, $V_{CC} = +3.3 \text{ V}$)

Parameter	Test-condition	Min	Typ	Max	Unit
Supply Voltage		3	5	5.5	V
Supply Current		---	34	63	mA
Transimpedance	Differential, measured with $40 \mu A$ p-p signal	2.10	2.75	3.40	k Ω
Output impedance	Single ended per side	48	50	52	Ω
Maximum Differential Output Voltage	Input = 2 mA p-p with 100Ω differential termination	220	380	575	mV p-p
AC Input Overload		2	---	---	mA p-p
DC Input Overload		1	---	---	mA
Input Referred RMS Noise	TO-52 package, see note 3	---	490	668	nA
Input Referred Noise Density	See note 3	---	11	---	pA/Hz ^{1/2}
Small signal bandwidth	Source capacitance = 0.85 pF , see note 2	1.525	2.00	---	GHz
Low Frequency Cutoff	-3 dB, input < $20 \mu A$ DC	---	30	---	kHz
Transimpedance Linear Range	Peak to peak $0.95 < \text{linearity} < 1.05$	40	---	---	μA p-p
Power Supply Rejection Ratio (PSRR)	Output referred, $f < 2 \text{ MHz}$, $\text{PSRR} = -20 \text{ Log} (\Delta V_{out} / \Delta V_{cc})$	---	50	---	dB

Note 2: Source capacitance for AD230-8-2G-MINI is the capacitance of APD.

Note 3: Input referred noise is calculated as RMS output noise/ (gain at $f = 10 \text{ MHz}$). Noise density is (input referred noise)/vbandwidth.

TRANSFER CHARACTERISTICS

The circuit used is an avalanche photodiode directly coupled to a high speed data handling transimpedance amplifier. The output of the APD (light generated current) is applied to the input of the amplifier. The amplifier output is in the form of a differential voltage pulsed signal.

The APD responsivity curve is provided in Fig. 2. The term Amps/Watt involves the area of the APD and can be expressed as Amps/mm²/Watts/mm², where the numerator applies to the current generated divided by the area of the detector, the denominator refers to the power of the radiant energy present per unit area. As an example assume a radiant input of 1 microwatt at 850 nm. The APD's corresponding responsivity is 0.4 A/W.

If energy in = $1 \mu W$, then the current from the APD = $(0.4 \text{ A/W}) \times (1 \times 10^{-6} \text{ W}) = 0.4 \mu A$. We can then factor in the typical gain of the APD of 100, making the input current to the amplifier $40 \mu A$. From Fig. 5 we can see the amplifier output will be approximately 75 mV p-p.

APPLICATION NOTES

The AD230-8-2G-MINI is a high speed optical data receiver. It incorporates an internal transimpedance amplifier with an avalanche photodiode. This device does not operate in DC mode or below 30 kHz.

This detector requires +3.0 V to +5.5 V voltage supply for the amplifier and a high voltage supply (100-240 V) for the APD. The internal APD follows the gain curve published for the AD230-8-TO52-S1 avalanche photodiode. The transimpedance amplifier provides differential output signals in the range of 200 millivolts differential. The APD gain is voltage and temperature dependent. Some form of temperature compensation bias voltage control may be required.

In order to achieve highest gain, the avalanche photodiode needs a positive bias voltage (Fig. 1). However, a current limiting resistor must be placed in series with the photodiode bias voltage to limit the current into the transimpedance amplifier. **Failure to limit this current may result in permanent failure of the device.** The suggested initial value for this limiting resistor is 390 KOhm.

When using this receiver, good high frequency placement and routing techniques should be followed in order to achieve maximum frequency response. This includes the use of bypass capacitors, short leads and careful attention to impedance matching. The large gain bandwidth values of this device also demand that good shielding practices be used to avoid parasitic oscillations and reduce output noise.

Fig. 1: APD gain vs bias voltage

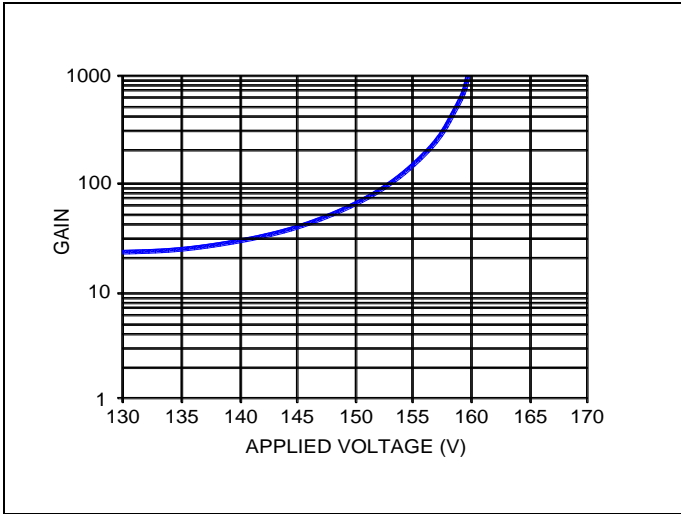


Fig. 2: APD Spectral response (M = 1)

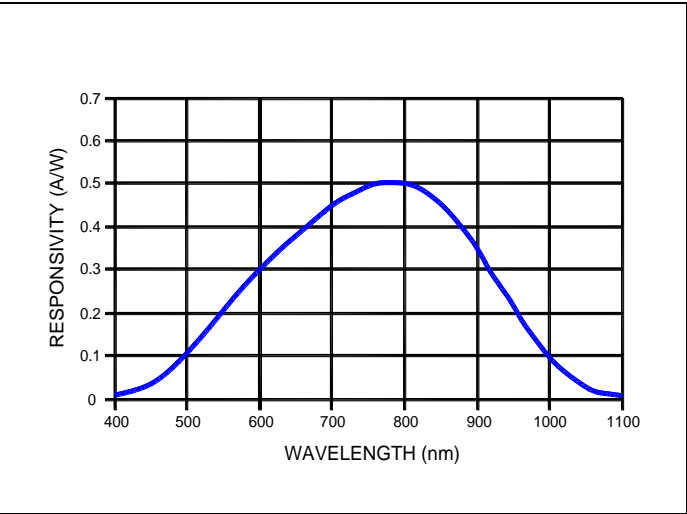


Fig. 3 : Differential output vs temperature

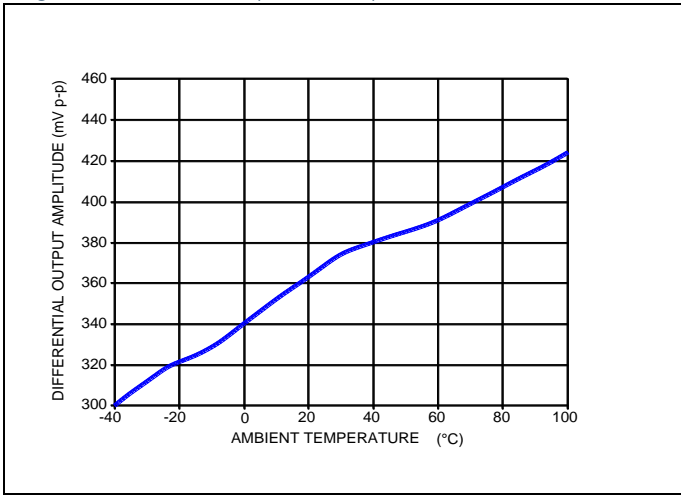


Fig.4 : APD capacitance vs voltage

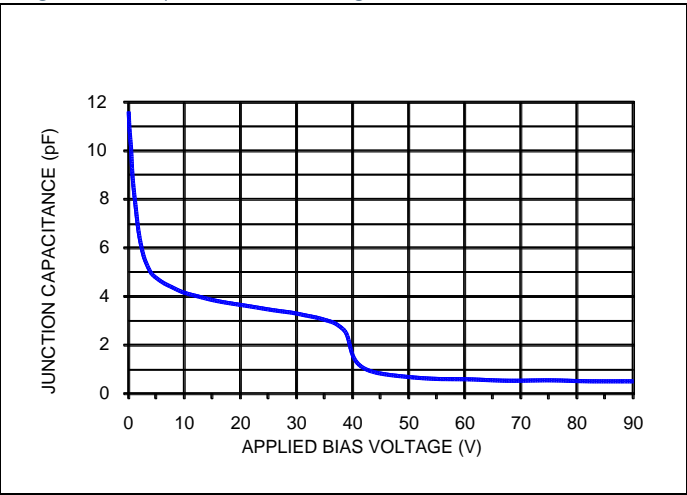


Fig. 5: Amplifier transfer function

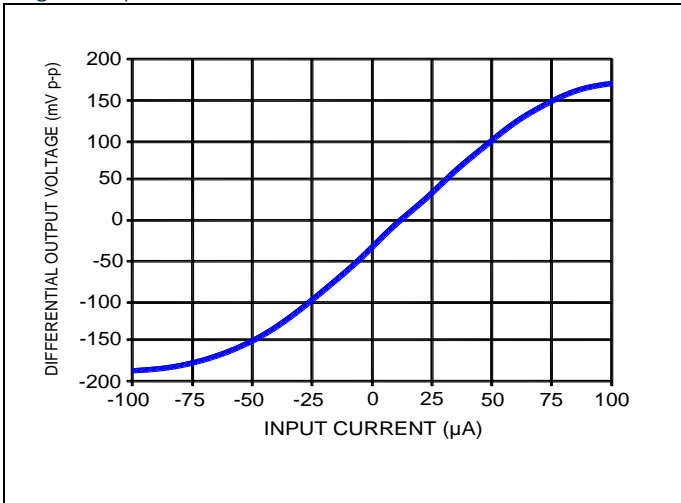
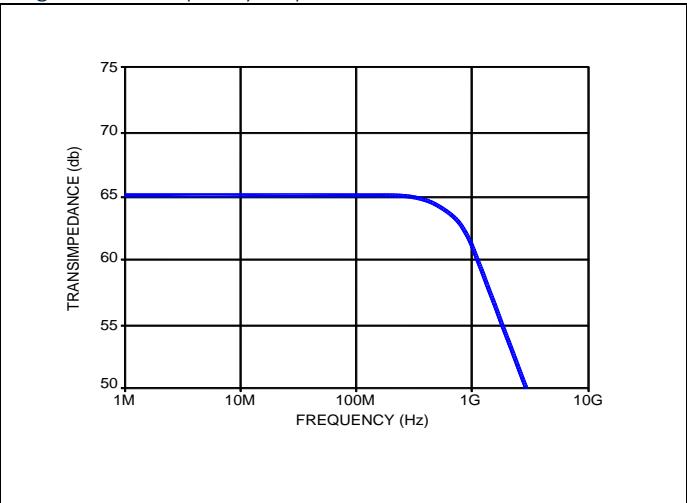


Fig. 6: Total frequency response



Данный компонент на территории Российской Федерации

Вы можете приобрести в компании MosChip.

Для оперативного оформления запроса Вам необходимо перейти по данной ссылке:

<http://moschip.ru/get-element>

Вы можете разместить у нас заказ для любого Вашего проекта, будь то серийное производство или разработка единичного прибора.

В нашем ассортименте представлены ведущие мировые производители активных и пассивных электронных компонентов.

Нашей специализацией является поставка электронной компонентной базы двойного назначения, продукции таких производителей как XILINX, Intel (ex.ALTERA), Vicor, Microchip, Texas Instruments, Analog Devices, Mini-Circuits, Amphenol, Glenair.

Сотрудничество с глобальными дистрибьюторами электронных компонентов, предоставляет возможность заказывать и получать с международных складов практически любой перечень компонентов в оптимальные для Вас сроки.

На всех этапах разработки и производства наши партнеры могут получить квалифицированную поддержку опытных инженеров.

Система менеджмента качества компании отвечает требованиям в соответствии с ГОСТ Р ИСО 9001, ГОСТ РВ 0015-002 и ЭС РД 009

Офис по работе с юридическими лицами:

105318, г.Москва, ул.Щербаковская д.3, офис 1107, 1118, ДЦ «Щербаковский»

Телефон: +7 495 668-12-70 (многоканальный)

Факс: +7 495 668-12-70 (доб.304)

E-mail: info@moschip.ru

Skype отдела продаж:

moschip.ru

moschip.ru_4

moschip.ru_6

moschip.ru_9