

PLEASE CHECK WWW.MOLEX.COM FOR LATEST PART INFORMATION

Part Number: [0002081103](#)
Status: **Active**
Description: Claspcn™ Crimp Terminal Socket, Tin (Sn) Plated Brass Contact, 24-30 AWG, Reel

Documents:

[Drawing \(PDF\)](#) [RoHS Certificate of Compliance \(PDF\)](#)

Agency Certification

CSA LR19980
 UL E29179

General

Product Family Crimp Terminals
 Series [1881](#)
 Crimp Quality Equipment Yes
 Product Name Claspcn™

Physical

Gender Female
 Material - Metal Brass
 Material - Plating Mating Tin
 Material - Plating Termination Tin
 Packaging Type Reel
 Plating min: Mating (µin) 20
 Plating min: Mating (µm) 0.50
 Plating min: Termination (µin) 20
 Plating min: Termination (µm) 0.50
 Termination Interface: Style Crimp or Compression
 Wire Insulation Diameter 0.76-1.52mm (.030-.060")
 Wire Size AWG 24, 26, 28, 30
 Wire Size mm² N/A

Material Info

Old Part Number 1881-3C1A

Reference - Drawing Numbers

Sales Drawing SD-1881-*

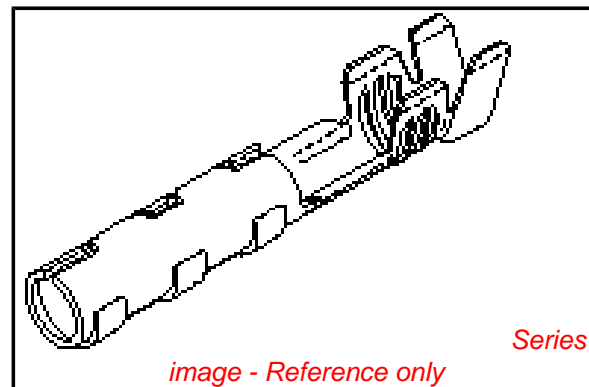


image - Reference only

EU RoHS

**ELV and RoHS
 Compliant**

REACH SVHC

Contains SVHC: No

Halogen-Free

Status

Halogen-Free

China RoHS



**Need more information on product
 environmental compliance?**

Email productcompliance@molex.com
 For a multiple part number RoHS Certificate of
 Compliance, [click here](#)

Please visit the [Contact Us](#) section for any
 non-product compliance questions.

Search Parts in this Series

[1881Series](#)

Mates With

16-06-0005

Application Tooling | FAQ

*Tooling specifications and manuals are
 found by selecting the products below.
 Crimp Height Specifications are then
 contained in the Application Tooling
 Specification document.*

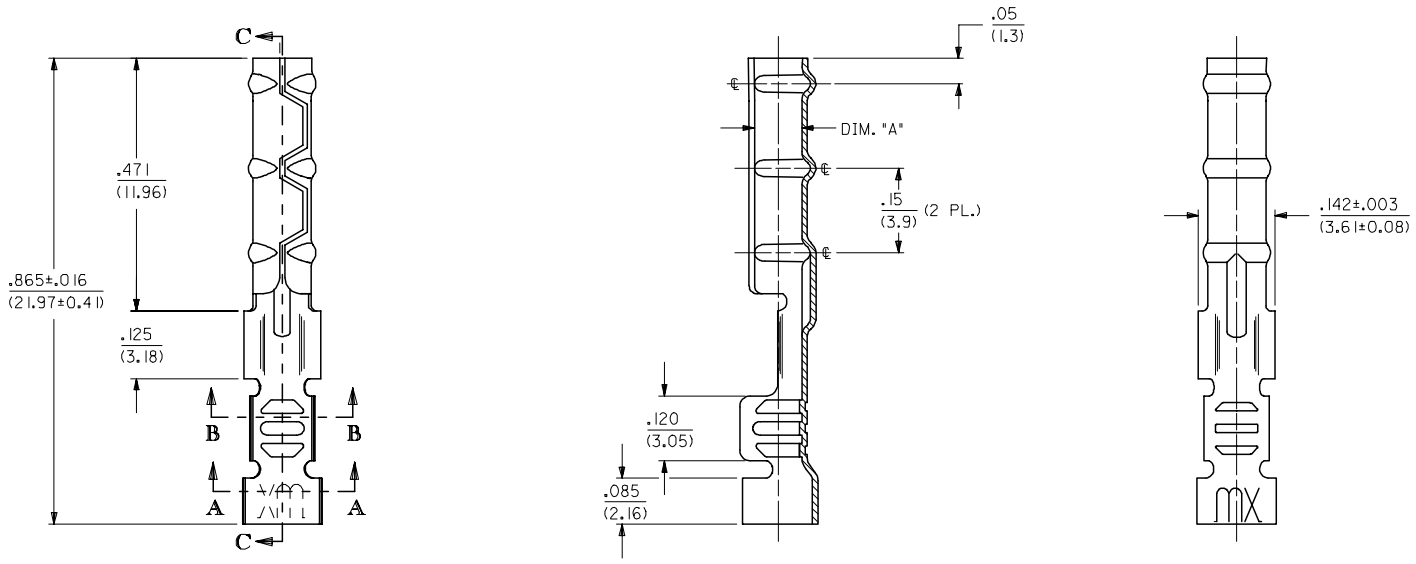
Global

| Description | Product # |
|---|----------------------------|
| HAND CRIMP TOOL | 0638117100 |
| Mini-Mac Applicator for Claspcn™ Crimp Terminals Socket, 24-30 AWG | 0638924600 |

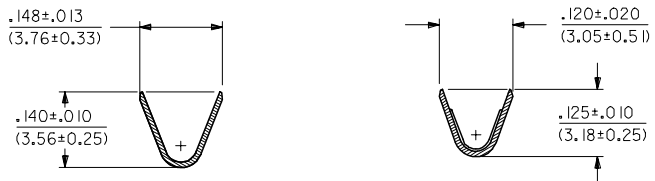
13 12 11 10 9 8 7 6 5 4 3 2 1

J I H G F E D C B A

1881-2*** TERMINAL SHOWN (16-24 AWG)
SEE SHEET 2 FOR 1881-3*** TERMINAL



SECTION C-C



SECTION A-A

SECTION B-B

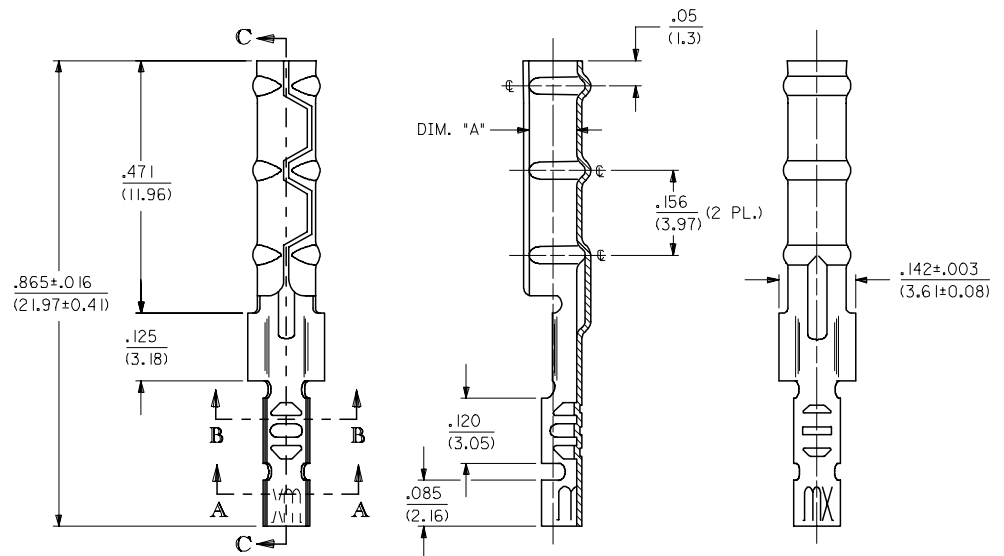
| | |
|---------|----|
| 2 | L1 |
| 1 | L1 |
| SHT/REV | |

| UPDATE TITLE BLOCK EC NO: UCP2006-0215 DRAWN: JLONE 2005/08/05 CHKD: ADERR 2005/08/10 APPR: FSM TH 2005/08/10 REV L1 | QUALITY SYMBOLS ▽=0 ▽=0 | GENERAL TOLERANCES (UNLESS SPECIFIED) <table border="1"> <tr> <th></th> <th>mm</th> <th>INCH</th> </tr> <tr> <td>4 PLACES</td> <td>± .10</td> <td>± .004</td> </tr> <tr> <td>3 PLACES</td> <td>± .12</td> <td>± .005</td> </tr> <tr> <td>2 PLACES</td> <td>± .15</td> <td>± .006</td> </tr> <tr> <td>1 PLACE</td> <td>± .20</td> <td>± .008</td> </tr> </table> ANGULAR ±1/2° | | mm | INCH | 4 PLACES | ± .10 | ± .004 | 3 PLACES | ± .12 | ± .005 | 2 PLACES | ± .15 | ± .006 | 1 PLACE | ± .20 | ± .008 | DIMENSION STYLE IN/MM DRAWN BY: JWC DATE: 3/11/91 CHECKED BY: RW DATE: 3/11/91 APPROVED BY: JWF DATE: 3/11/91 | SCALE: 6:1 DESIGN UNITS: INCH THIRD ANGLE PROJECTION | TITLE: CRIMP TERMINAL SOCKET, CLASPCON MATERIAL NO.: DOCUMENT NO.: SD-1881-* SHEET NO.: 1 OF 2 |
|--|-------------------------------|--|--------------------|----|------|----------|-------|--------|----------|-------|--------|----------|-------|--------|---------|-------|--------|--|--|---|
| | | mm | INCH | | | | | | | | | | | | | | | | | |
| | 4 PLACES | ± .10 | ± .004 | | | | | | | | | | | | | | | | | |
| | 3 PLACES | ± .12 | ± .005 | | | | | | | | | | | | | | | | | |
| 2 PLACES | ± .15 | ± .006 | | | | | | | | | | | | | | | | | | |
| 1 PLACE | ± .20 | ± .008 | | | | | | | | | | | | | | | | | | |
| DRAFT WHERE APPLICABLE MUST REMAIN WITHIN DIMENSIONS | | SEE CHART | MOLEX INCORPORATED | | | | | | | | | | | | | | | | | |
| THIS DRAWING CONTAINS INFORMATION THAT IS PROPRIETARY TO MOLEX INCORPORATED AND SHOULD NOT BE USED WITHOUT WRITTEN PERMISSION | | | | | | | | | | | | | | | | | | | | |

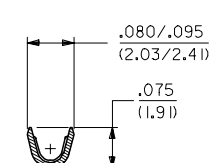
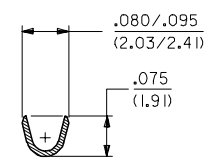
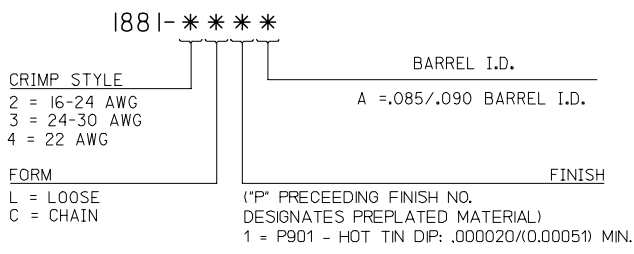
12 11 10 9 8 7 6 5 4 3 2 1

| CHART | | | |
|-------------|-------------|--------------------------|----------|
| PART NUMBER | ENG. NUMBER | DIMENSION "A" (DIA.) | |
| 02-08-1102 | 1881-2L1A | .085/.090 (2.16/2.29) | |
| 02-08-1101 | 1881-2C1A | | |
| 02-08-1106 | 1881-2L1B | .083/.088 (2.11/2.24) | OBSOLETE |
| 02-08-1105 | 1881-2C1B | | OBSOLETE |
| 02-08-1104 | 1881-3L1A | .085/.090 (2.16/2.29) | |
| 02-08-1103 | 1881-3C1A | | |
| 02-08-1107 | 1881-4C1A | .085/.090 (2.16/2.29) | OBSOLETE |
| 02-08-1108 | 1881-4L1A | | OBSOLETE |

1881-3*** TERMINAL SHOWN (24-30 AWG)
SEE SHEET 1 FOR 1881-2*** TERMINAL



LEGEND



SECTION A-A

SECTION B-B

- NOTES:
1. MATERIAL: CARTRIDGE BRASS
 2. FINISH: SEE LEGEND
 3. PRODUCT SPECIFICATION: N/A
 4. PACKAGING SPECIFICATION: N/A
 5. 1881 "CLASPCON" SERIES TERMINAL WITH THE STANDARD BARREL I.D. IS INTENDED FOR MATING TO .093/(2.36) DIA. P.C. BOARD PINS.
 6. INITIAL EXTRACTION FORCE TO BE 4.0±1.5 LBS. FROM AN .093/.092 / (2.36/2.34) DIA. PIN AND 2 LBS. MIN. AFTER THE 10TH EXTRACTION ON STANDARD BARREL I.D.

| | | | | | | | | | | |
|--|-------------------------------|---------------------------------------|---------|---|---------|---------------------------------|--------------|------------------------|--|--|
| OBSOLETE 02-08-1102 EC NO: UCP2006-0215 DRAWN: JLONE 2005/08/05 CHKD: ADERR 2005/08/10 APPR: FSM TH 2005/08/10 REV L1 | QUALITY SYMBOLS ▽=0 ▽=0 | GENERAL TOLERANCES (UNLESS SPECIFIED) | | DIMENSION STYLE | | SCALE | DESIGN UNITS | THIRD ANGLE PROJECTION | | |
| | | mm | INCH | IN/MM | | 6:1 | INCH | | | |
| | | 4 PLACES ±--- | ±--- | DRAWN BY | DATE | TITLE | | | | |
| | | 3 PLACES ±--- | ±.010 | JWC | 3/11/91 | CRIMP TERMINAL SOCKET, CLASPCON | | | | |
| 2 PLACES ±0.25 | ±.014 | CHECKED BY | DATE | MATERIAL NO. DOCUMENT NO. SHEET NO. | | | | | | |
| 1 PLACE ±0.36 | ±--- | RW | 3/11/91 | | | | | | | |
| ANGULAR ±1/2° | | APPROVED BY | DATE | MOLEX INCORPORATED | | | | | | |
| DRAFT WHERE APPLICABLE MUST REMAIN WITHIN DIMENSIONS | | JWF | 3/11/91 | SEE CHART | | SD-1881-* | | 2 OF 2 | | |
| | | MATERIAL NO. | | THIS DRAWING CONTAINS INFORMATION THAT IS PROPRIETARY TO MOLEX INCORPORATED AND SHOULD NOT BE USED WITHOUT WRITTEN PERMISSION | | | | | | |

Данный компонент на территории Российской Федерации

Вы можете приобрести в компании MosChip.

Для оперативного оформления запроса Вам необходимо перейти по данной ссылке:

<http://moschip.ru/get-element>

Вы можете разместить у нас заказ для любого Вашего проекта, будь то серийное производство или разработка единичного прибора.

В нашем ассортименте представлены ведущие мировые производители активных и пассивных электронных компонентов.

Нашей специализацией является поставка электронной компонентной базы двойного назначения, продукции таких производителей как XILINX, Intel (ex.ALTERA), Vicor, Microchip, Texas Instruments, Analog Devices, Mini-Circuits, Amphenol, Glenair.

Сотрудничество с глобальными дистрибьюторами электронных компонентов, предоставляет возможность заказывать и получать с международных складов практически любой перечень компонентов в оптимальные для Вас сроки.

На всех этапах разработки и производства наши партнеры могут получить квалифицированную поддержку опытных инженеров.

Система менеджмента качества компании отвечает требованиям в соответствии с ГОСТ Р ИСО 9001, ГОСТ РВ 0015-002 и ЭС РД 009

Офис по работе с юридическими лицами:

105318, г.Москва, ул.Щербаковская д.3, офис 1107, 1118, ДЦ «Щербаковский»

Телефон: +7 495 668-12-70 (многоканальный)

Факс: +7 495 668-12-70 (доб.304)

E-mail: info@moschip.ru

Skype отдела продаж:

moschip.ru

moschip.ru_4

moschip.ru_6

moschip.ru_9