

1-channel Switching Gate Driver

■ GENERAL DESCRIPTION

The NJW4841 is a High Speed Switching Gate Driver that is applicable 2A peak current.

The NJW4841 features are Withstand voltage of 40V, recommended operating voltage range: 4V to 20V and Fast switching time

The NJW4841 is suitable for DC / AC Motor Drive, Switching Power Supply and DC / DC Converter Applications.

■ PACKAGE OUTLINE

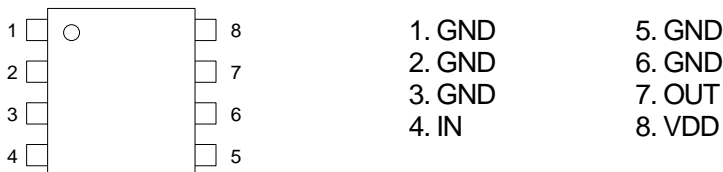


■ FEATURES

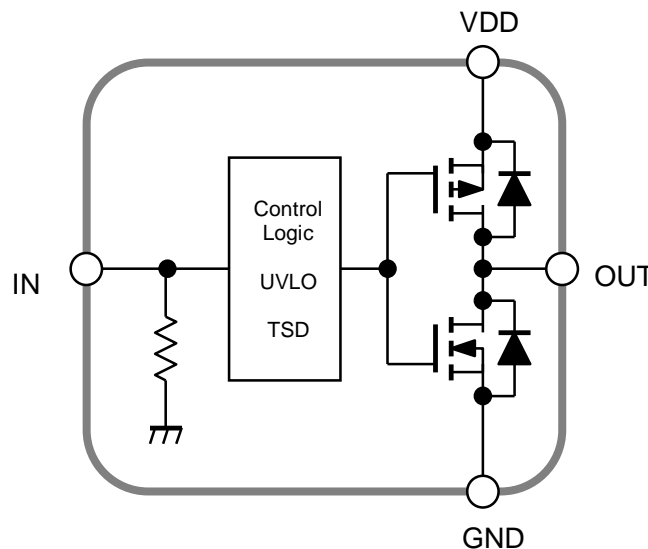
- Output Peak Current: $\pm 2A$ (peak)
- Operating Voltage Range: 4V to 20V
- High Speed Switching: $t_r/t_f=25ns/20ns$ (typ.) at $C_L=2200pF$
- Corresponding with Logic Voltage Operation: 3V/5V
- Built-in Thermal Shut Down
- Under Voltage Lockout
- Package: MSOP8 (VSP8)*

MSOP8 (VSP8)*
* MEET JEDEC MO-187-DA

■ PIN CONFIGURATION



■ BLOCK DIAGRAM



NJW4841

■ ABSOLUTE MAXIMUM RATINGS

(Ta=25°C)

PARAMETER	SYMBOL	RATINGS	UNIT	REMARK
Supply Voltage	V _{DD}	+40	V	VDD-GND Pin
Input Voltage	V _{IN}	-0.3 to +6	V	IN-GND Pin
Power Dissipation	P _D	720 (*1) 1100 (*2)	mW	-
Junction Temperature	T _j	-40 to +150	°C	-
Operating Temperature	T _{opr}	-40 to +85	°C	-
Storage Temperature	T _{stg}	-50 to +150	°C	-

(*1): Mounted on glass epoxy board. (76.2×114.3×1.6mm: based on EIA/JDEC standard, 2Layers)

(*2): Mounted on glass epoxy board. (76.2×114.3×1.6mm: based on EIA/JDEC standard, 4Layers),

internal Cu area: 74.2×74.2mm

■ RECOMMENDED OPERATING CONDITIONS

(Ta=25°C)

PARAMETER	SYMBOL	MIN.	TYP.	MAX.	UNIT	REMARK
Operating Voltage	V _{DD}	4.0	-	20	V	VDD-GND Pin
Input Voltage	V _{IN}	0	-	5.5	V	IN-GND Pin

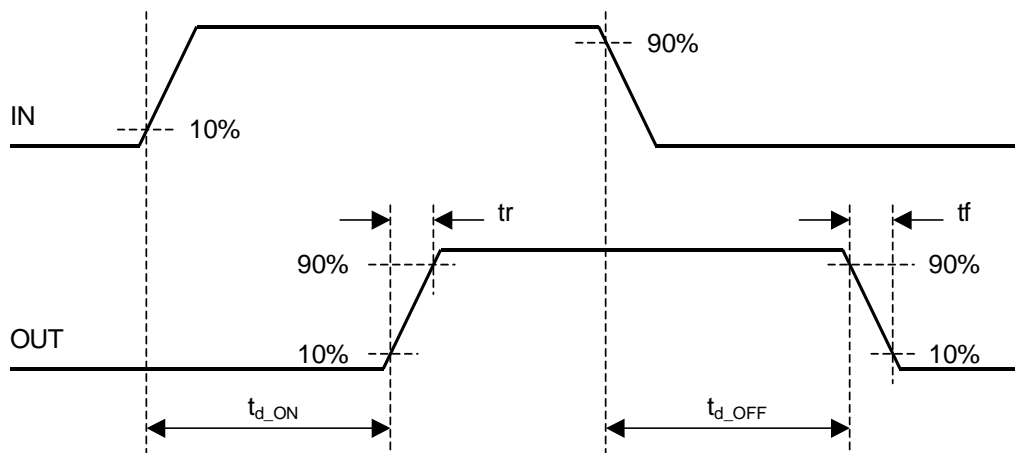
■ ELECTRICAL CHARACTERISTICS

(Unless otherwise noted, $V_{DD}=16V$, $T_a=25^\circ C$)

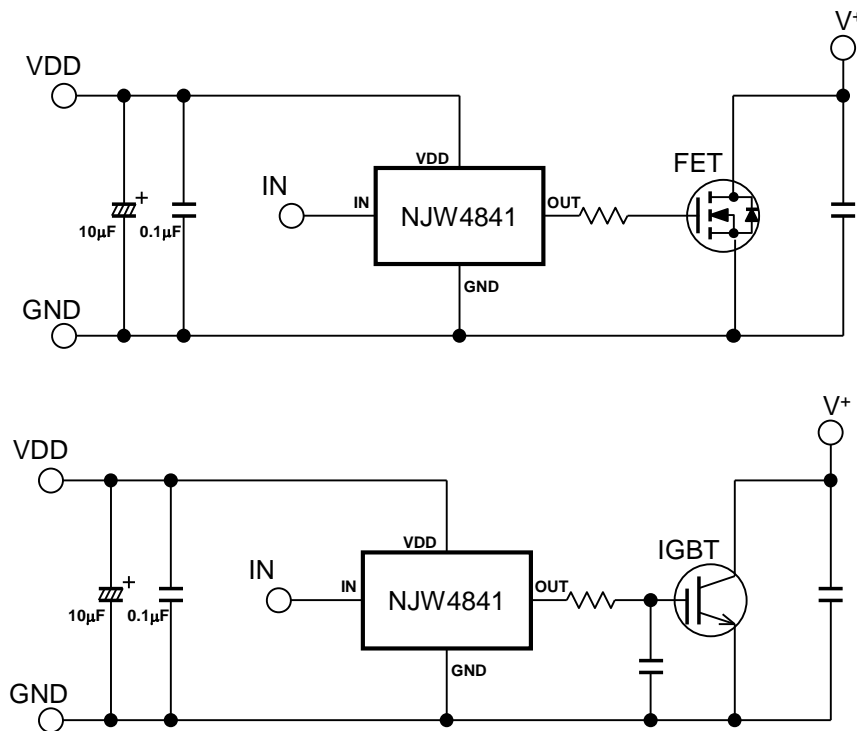
PARAMETER	SYMBOL	TEST CONDITIONS	MIN.	TYP.	MAX.	UNIT
General						
Quiescent Current	I_{Q1}	$V_{IN}=5V$	–	1.5	2.5	mA
	I_{Q2}	$V_{IN}=0V$	–	1.3	2.3	mA
Output Block						
Output Peak Current	I_{PK1}	Pulse Width $\leq 10\mu s$, $V_{OUT}=0V$	–	2	–	A
	I_{PK2}	Pulse Width $\leq 10\mu s$, $V_{OUT}=16V$	–	2	–	A
Output ON Resistance (High-Side / Low-Side)	R_{DSH}	$I_{O-SOURCE}=100mA$	–	2.1	3.9	Ω
	R_{DSL}	$I_{O-SINK}=100mA$	–	1.5	2.8	Ω
Output Pull Down Resistance	R_{OUTPD}		60	100	140	k Ω
Input Circuit Block						
IN Pin High Voltage	V_{IHIN}		2.0	–	5.5	V
IN Pin Low Voltage	V_{ILIN}		0	–	0.8	V
Input Pull Down Resistance	R_{INPD}		60	100	140	k Ω
UVLO Block						
UVLO Release Voltage	V_{UVLO2}		2.8	3.3	3.8	V
UVLO Operating Voltage	V_{UVLO1}		2.5	3.0	3.5	V
UVLO Hysteresis Voltage	V_{UVLO}	$V_{UVLO2} - V_{UVLO1}$	–	0.3	–	V
Output Rise/Fall characteristics						
Output Rise Time	t_r	$C_L=2200pF$, $V_{IN}=0$ to $5V$	–	25	–	ns
Output Fall Time	t_f	$C_L=2200pF$, $V_{IN}=5$ to $0V$	–	20	–	ns
Rise Delay Time	t_{d_ON}	$C_L=2200pF$, $V_{IN}=0$ to $5V$	–	40	–	ns
Fall Delay Time	t_{d_OFF}	$C_L=2200pF$, $V_{IN}=5$ to $0V$	–	45	–	ns

NJW4841

■ TIMING CHART



■ TYPICAL APPLICATION



■ APPLICATION TIPS

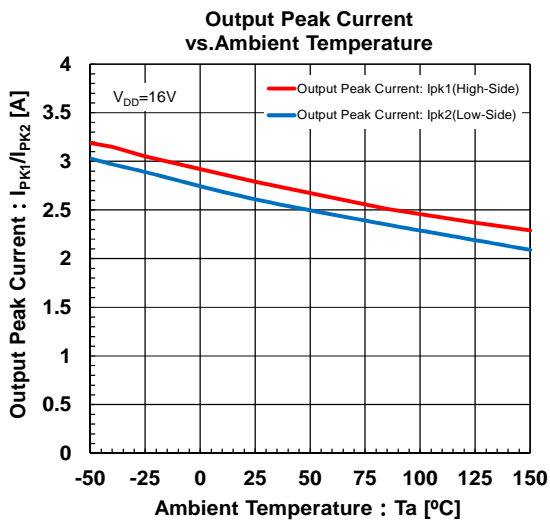
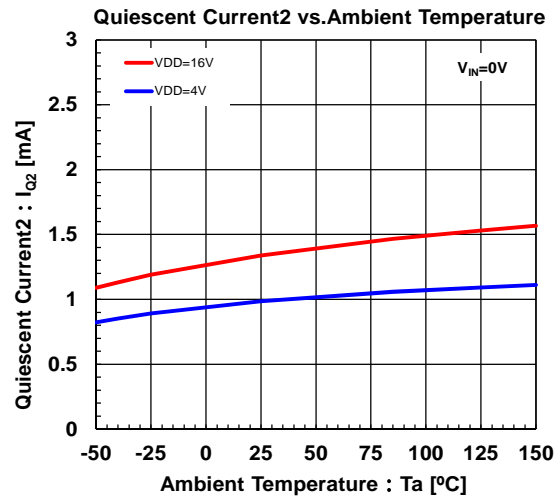
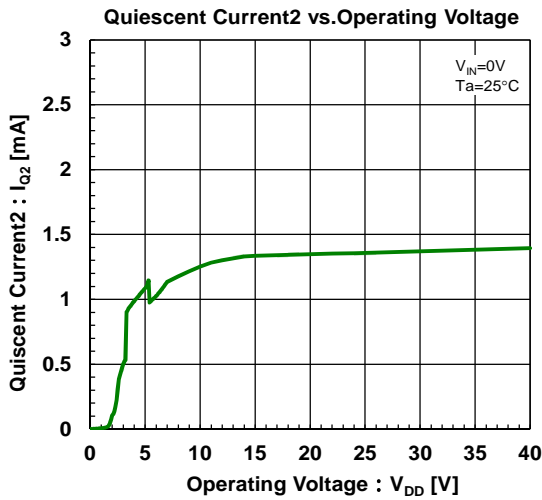
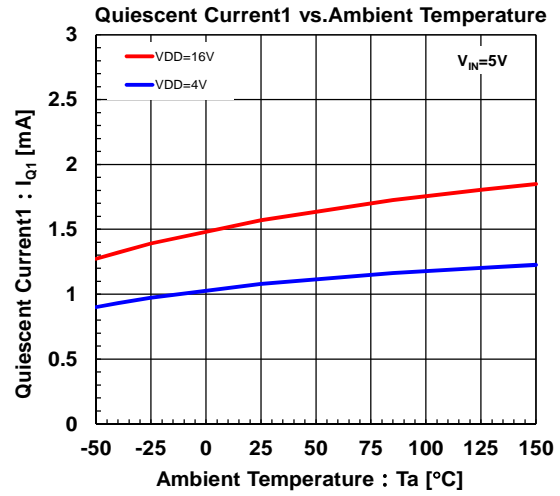
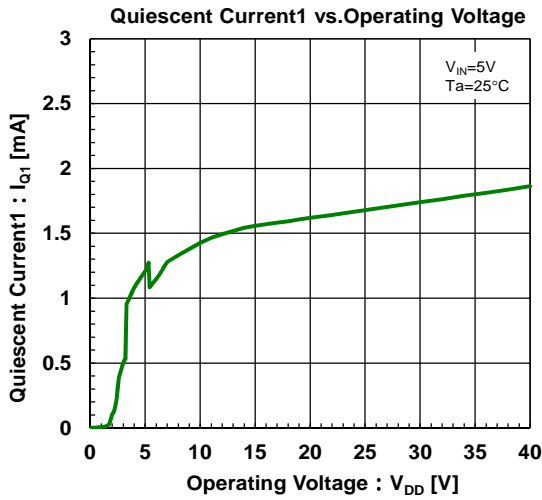
In the application that does a high-speed switching of NJW4841, because the current flow corresponds to the input frequency, the substrate (PCB) layout becomes an important.

NJW4841 is driving the High-side/Low-side SW gate with high speed to reduce switching losses. The transient voltage is generated by parasitic inductance and a high-speed current change of high side and low side SW.

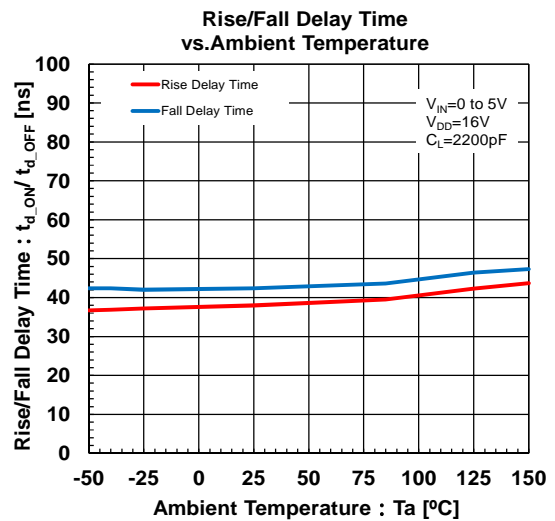
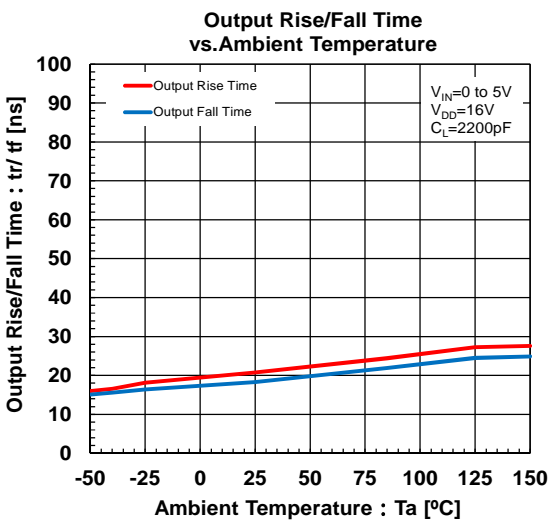
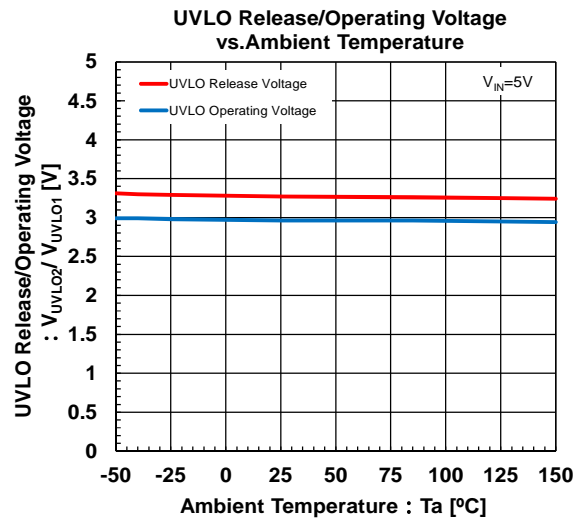
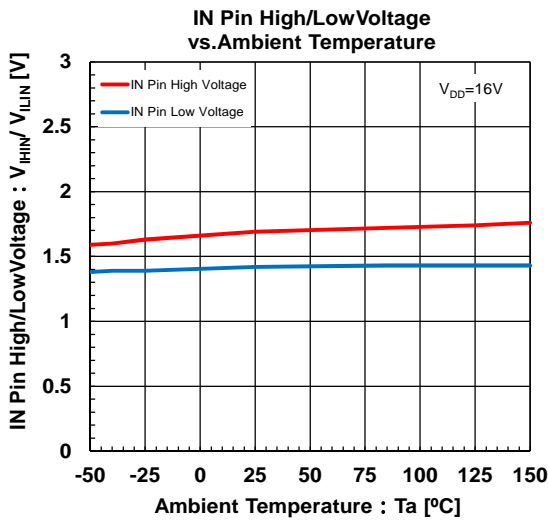
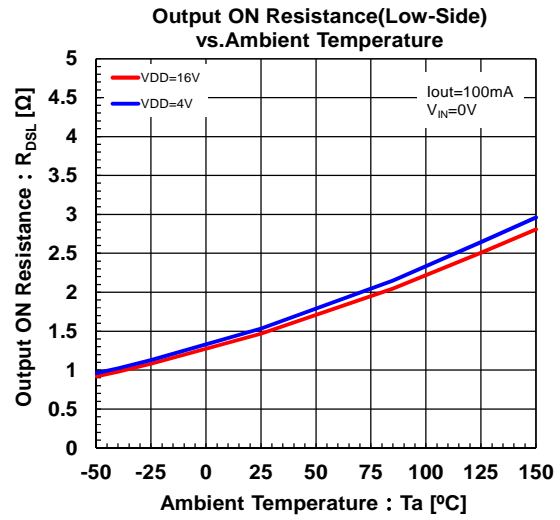
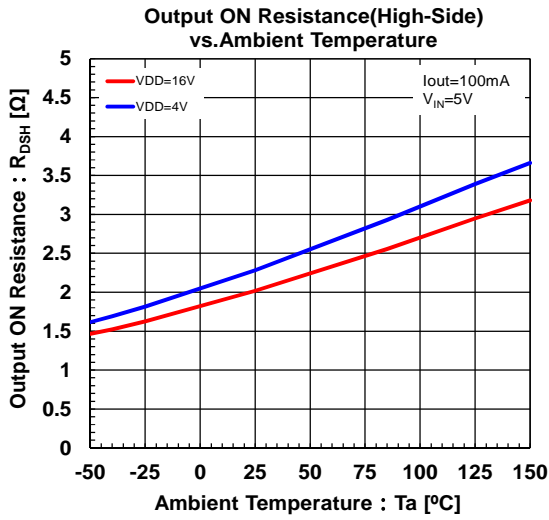
You should attempt the transient voltage decrease by making a current loop area minimize as much as possible. Therefore, you should make a current flowing line thick and short as much as possible.

You should insert a bypass capacitor between the VDD pin and the GND pin to prevent malfunction by transient voltage and/or exceed maximum input voltage rating. The recommended bypass capacitor is low ESR and fine high frequency characteristic (NJRC recommends 0.1µF or more). An aluminum electrolytic capacitor is recommended for smoothing capacitor (NJRC recommends 10µF or more). However, you should use large capacitor by sufficient evaluation (assessment) due to load condition and/or application use environment. (There is a possibility that the supply voltage rises by inductive kickback when the supply current of the inductive load is large.) The bypass capacitors should be connected as near as possible to the VDD pin.

CHARACTERISTICS



CHARACTERISTICS



[CAUTION]

The specifications on this datasheets are only given for information , without any guarantee as regards either mistakes or omissions.

The application circuits in this datasheets are described only to show representative usages of the product and not intended for the guarantee or permission of any right including the industrial rights.

Mouser Electronics

Authorized Distributor

Click to View Pricing, Inventory, Delivery & Lifecycle Information:

[NJR:](#)

[NJW4841R-TE1](#) [NJW4841RT1-TE1](#)

Данный компонент на территории Российской Федерации

Вы можете приобрести в компании MosChip.

Для оперативного оформления запроса Вам необходимо перейти по данной ссылке:

<http://moschip.ru/get-element>

Вы можете разместить у нас заказ для любого Вашего проекта, будь то серийное производство или разработка единичного прибора.

В нашем ассортименте представлены ведущие мировые производители активных и пассивных электронных компонентов.

Нашей специализацией является поставка электронной компонентной базы двойного назначения, продукции таких производителей как XILINX, Intel (ex.ALTERA), Vicor, Microchip, Texas Instruments, Analog Devices, Mini-Circuits, Amphenol, Glenair.

Сотрудничество с глобальными дистрибьюторами электронных компонентов, предоставляет возможность заказывать и получать с международных складов практически любой перечень компонентов в оптимальные для Вас сроки.

На всех этапах разработки и производства наши партнеры могут получить квалифицированную поддержку опытных инженеров.

Система менеджмента качества компании отвечает требованиям в соответствии с ГОСТ Р ИСО 9001, ГОСТ РВ 0015-002 и ЭС РД 009

Офис по работе с юридическими лицами:

105318, г.Москва, ул.Щербаковская д.3, офис 1107, 1118, ДЦ «Щербаковский»

Телефон: +7 495 668-12-70 (многоканальный)

Факс: +7 495 668-12-70 (доб.304)

E-mail: info@moschip.ru

Skype отдела продаж:

moschip.ru

moschip.ru_4

moschip.ru_6

moschip.ru_9