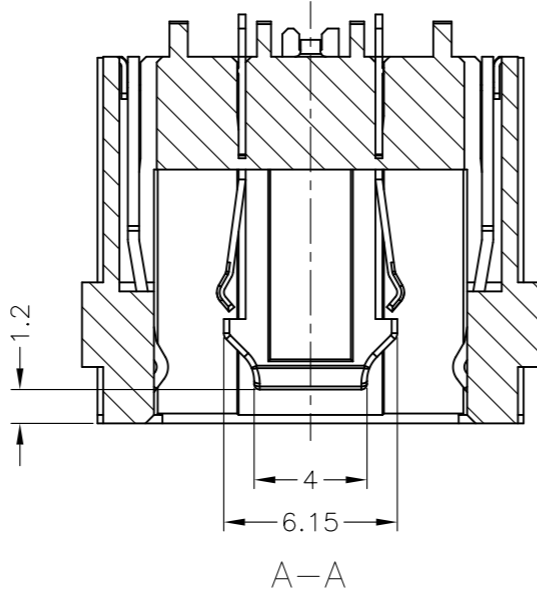
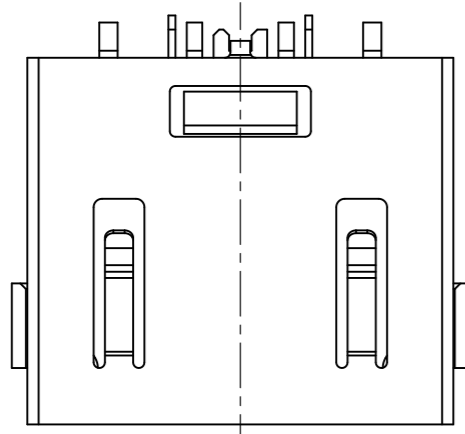
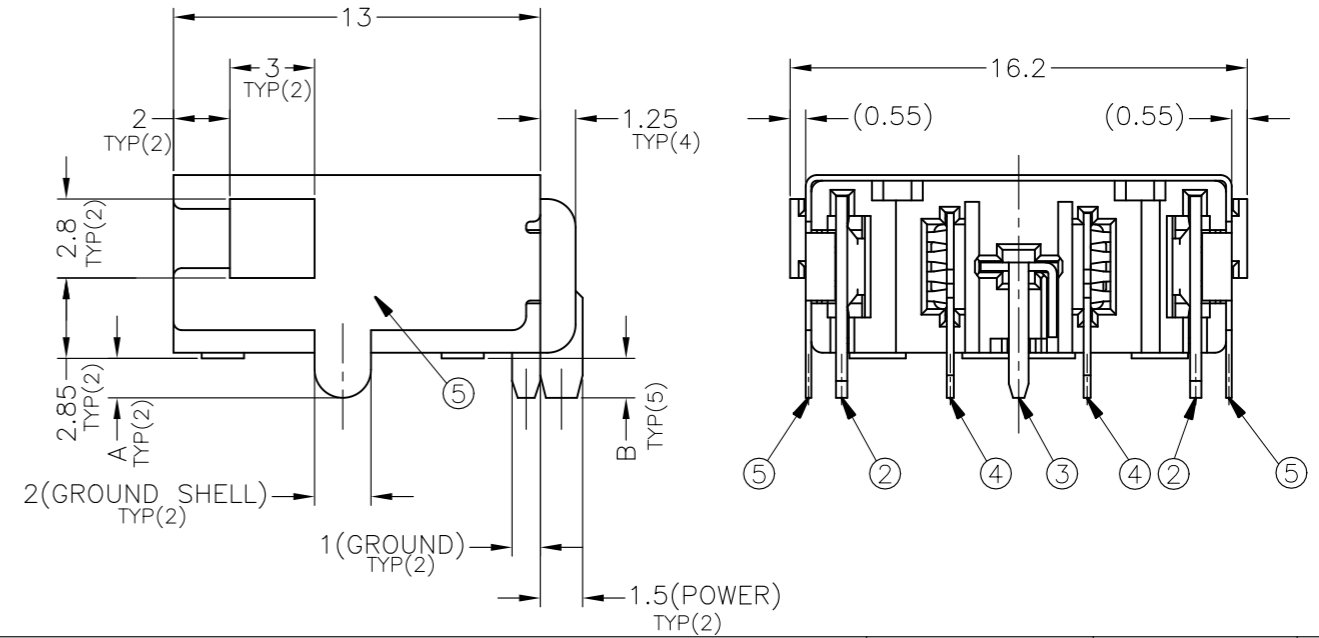
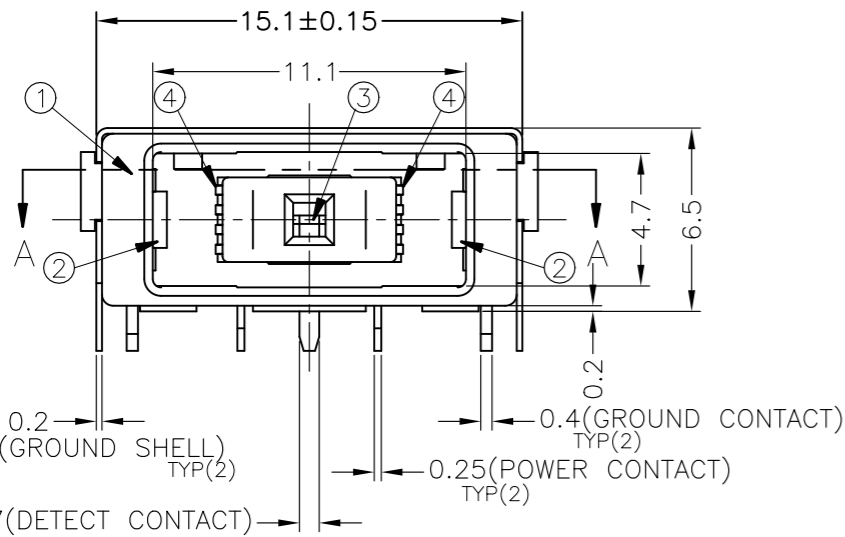


THIS DRAWING IS UNPUBLISHED. RELEASED FOR PUBLICATION - :4:1 .
 © COPYRIGHT - By - ALL RIGHTS RESERVED.

| LOC | | DIST | | REVISIONS | | | |
|-----|-----|------------------------|--|-----------|-----|------|--|
| P | LTR | DESCRIPTION | | DATE | DWN | APVD | |
| | B2 | REVISED(ECR-18-000596) | | 10JAN18 | T.Z | H.W | |

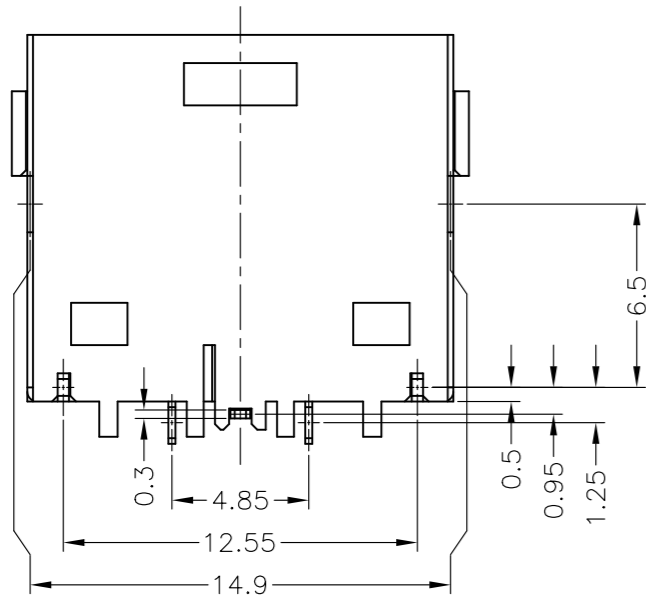


- EU ROHS-RELATED RESTRICTED SUBSTANCE SPEC IN HOMOGENEOUS MATERIAL REFER TO TEC-138-702 REV.G:
 LEAD < 1000PPM, CADMIUM < 100PPM, MERCURY < 1000PPM
 CHROMIUM VI < 1000PPM, PBB < 1000PPM, PBDE < 1000PPM
- HALOGEN FREE SPEC:
 CHLORINE (Cl): 900 ppm MAX.
 BROMINE (Br): 900 ppm MAX.
 CHLORINE (Cl) + BROMINE (Br): 1500 ppm MAX.



| A'SSY P/N | | | | | |
|-----------|-------------|-------------|-------------|-----------|-----------|
| | 1-2129458-3 | 1-2129458-2 | 1-2129458-1 | 2129458-2 | 2129458-1 |
| DIM B | 2.1 | 1.2 | 1.4 | 1.2 | 1.4 |
| DIM A | 2.1 | 1.2 | 1.4 | 1.2 | 1.4 |

| Q'TY | FINISH/COLOR | MATERIAL | PART NAME | NO. |
|------|---|---|----------------|-----|
| 1 | 0.002mm MATTE TIN PLATING ON SOLDER AREA, 0.00127mm MIN. NICKEL UNDERPLATED ALL OVER | COPPER ALLOY | GROUND SHELL | ⑤ |
| 2 | 0.0002mm GOLD PLATING ON CONTACT AREA, 0.002mm MATTE TIN PLATING ON SOLDER AREA, 0.002mm MIN. NICKEL UNDERPLATED ALL OVER | COPPER ALLOY | POWER CONTACT | ④ |
| 1 | 0.0002mm GOLD PLATING ON CONTACT AREA, 0.002mm MATTE TIN PLATING ON SOLDER AREA, 0.002mm MIN. NICKEL UNDERPLATED ALL OVER | COPPER ALLOY | DETECT CONTACT | ③ |
| 2 | 0.0002mm GOLD PLATING ON CONTACT AREA, 0.002mm MATTE TIN PLATING ON SOLDER AREA, 0.002mm MIN. NICKEL UNDERPLATED ALL OVER | COPPER ALLOY | GROUND CONTACT | ② |
| 1 | BLACK | HIGH TEMPERATURE THERMO-PLASTIC (UL94V-0) | HOUSING | ① |



THIS DRAWING IS A CONTROLLED DOCUMENT.

DIMENSIONS: mm

TOLERANCES UNLESS OTHERWISE SPECIFIED:
 0 PLC ±
 1 PLC ±
 2 PLC ± ±0.25
 3 PLC ± ±3°
 4 PLC ±
 ANGLES ±

MATERIAL: SEE TABLE

FINISH: -

DWN: S.HUANG 20JUN2012
 CHK: V.PENG 20JUN2012
 APVD: W.KODAMA 20JUN2012

NAME: DC POWER JACK CONNECTOR DIP TYPE (10.7A)

PRODUCT SPEC: 108-99040
 APPLICATION SPEC: 501-99041

WEIGHT: 1.94g

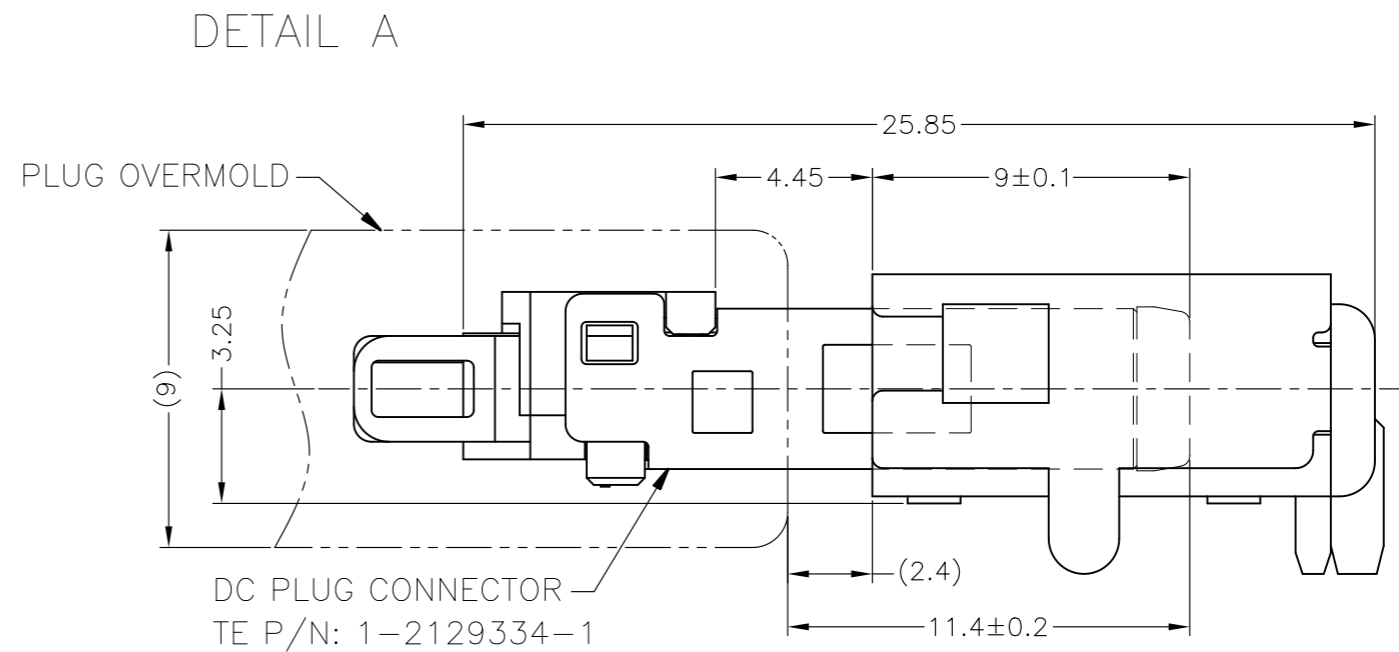
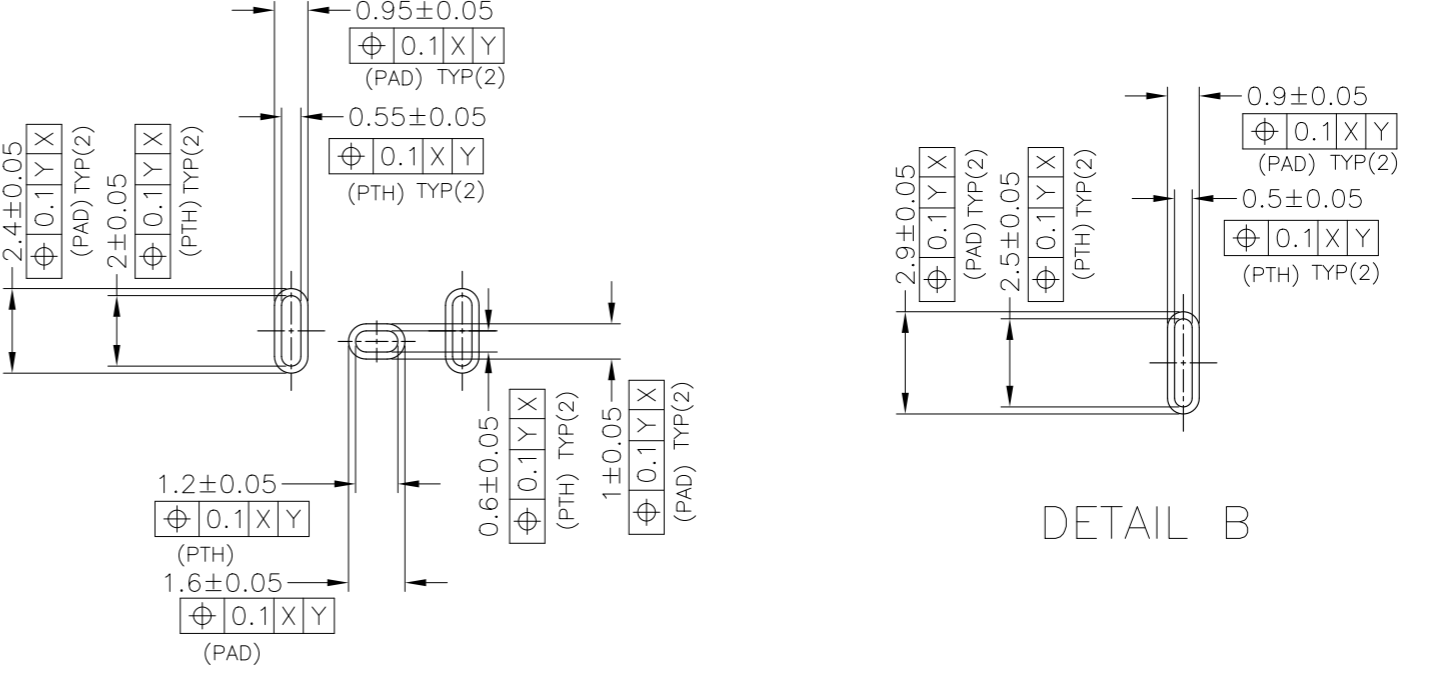
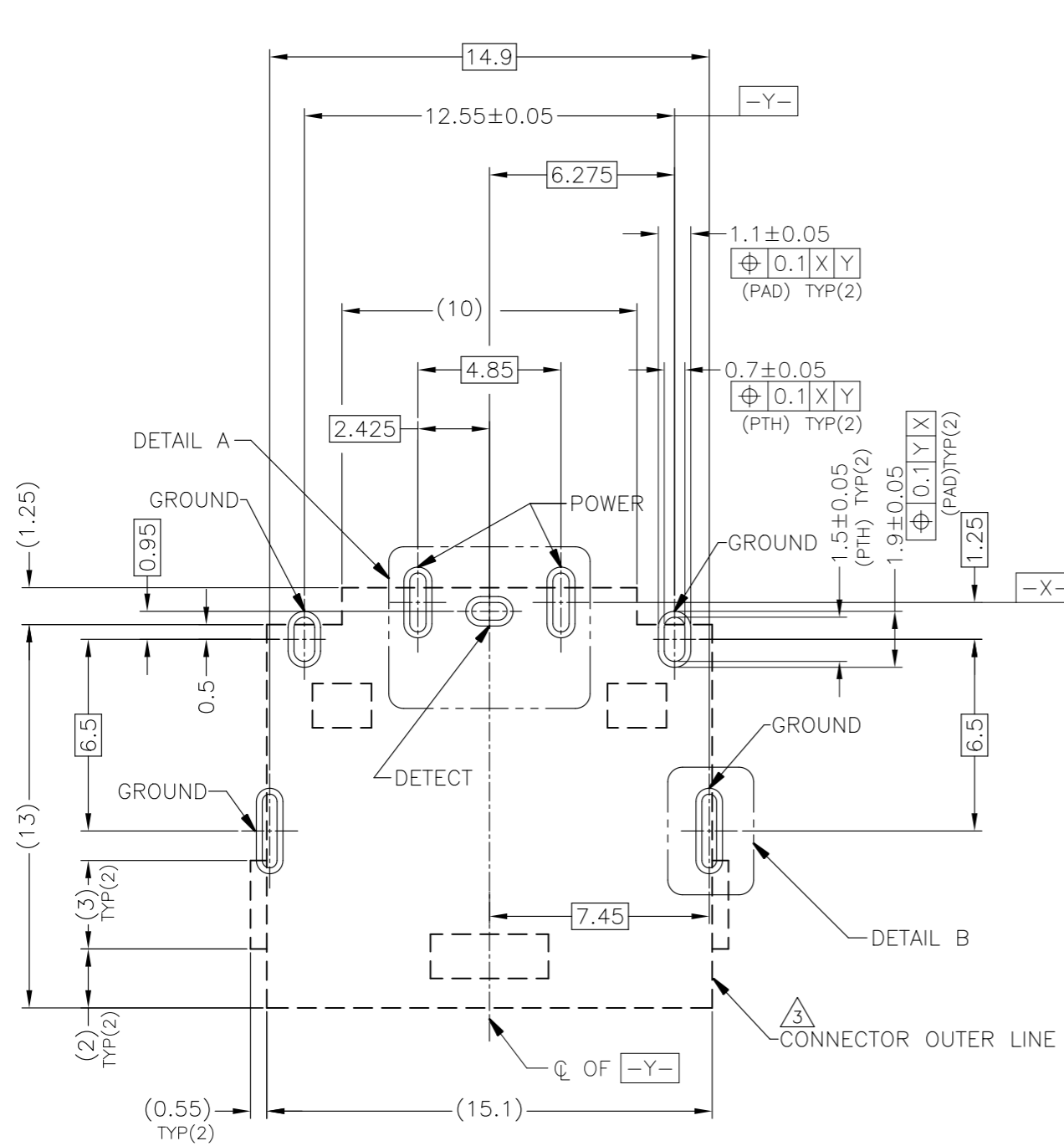
SIZE: A3
 CAGE CODE: 00779
 DRAWING NO: C=2129458

RESTRICTED TO: -

CUSTOMER DRAWING

SCALE: 4:1
 SHEET: 1 of 3
 REV: B2

| LOC | DIST | REVISIONS | | | |
|-----|------|-------------|------|-----|------|
| P | LTR | DESCRIPTION | DATE | DWN | APVD |
| DW | | SEE SHEET 1 | - | - | - |



RECOMMENDED P.C.BOARD PATTERN LAYOUT (TOP VIEW)
 TOLERANCE: ±0.05 (THICKNESS=0.8mm)

△ [] : CONNECTOR OUTER LINE (NO COMPONENT AREA)

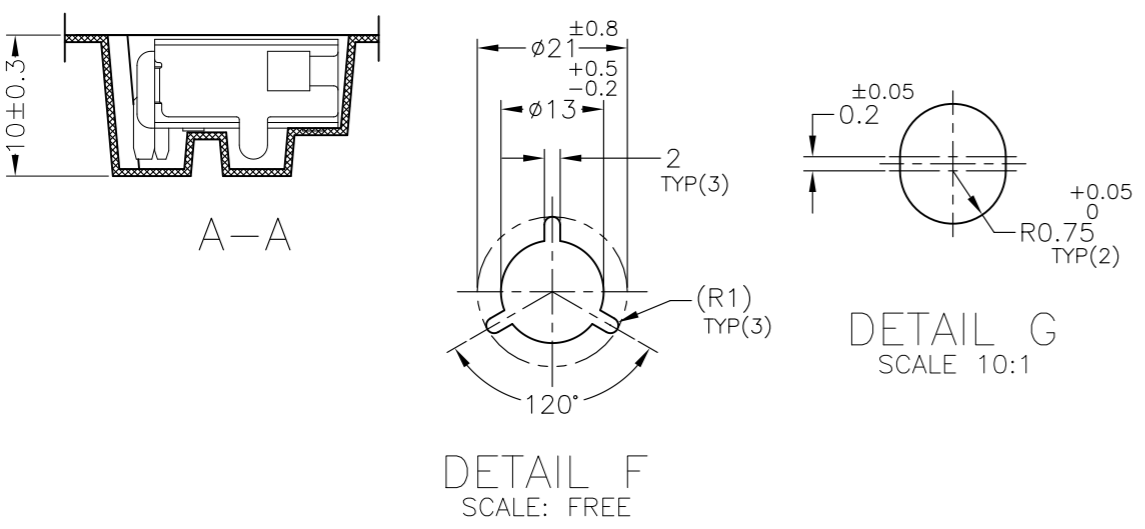
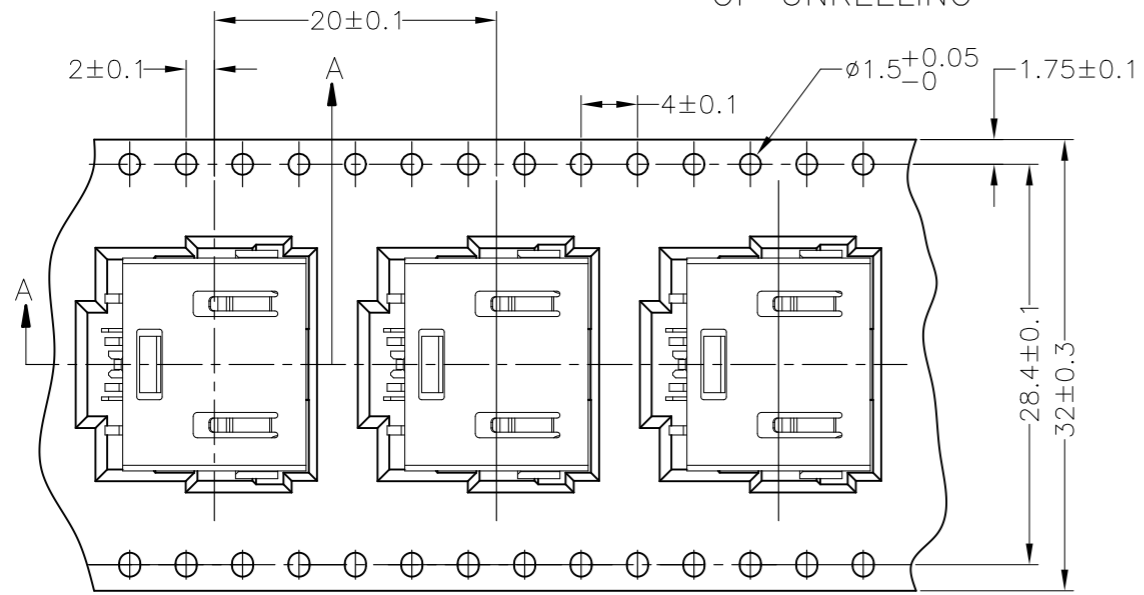
| | | | | | |
|---|--|------------------|--|---|--|
| THIS DRAWING IS A CONTROLLED DOCUMENT. | | DWN | | | |
| DIMENSIONS: mm | | CHK | | | |
| TOLERANCES UNLESS OTHERWISE SPECIFIED: | | APVD | | | |
| 0-PLC ±- 1-PLC ±- 2-PLC ±- ±0.25 3-PLC ±- ±3' 4-PLC ±- ANGLES ±- | | PRODUCT SPEC | | | |
| MATERIAL | | WEIGHT | | NAME | |
| FINISH | | APVD | | DC POWER JACK CONNECTOR DIP TYPE (10.7A) | |
| | | APPLICATION SPEC | | SIZE | |
| | | WEIGHT | | CAGE CODE | |
| | | CUSTOMER DRAWING | | DRAWING NO | |
| | | | | A3 00779 C=2129458 | |
| | | | | RESTRICTED TO | |
| | | | | SCALE 5:1 SHEET 2 OF 3 REV B2 | |

THIS DRAWING IS UNPUBLISHED. RELEASED FOR PUBLICATION
 © COPYRIGHT - By - ALL RIGHTS RESERVED.

| LOC | | DIST | | REVISIONS | | | | |
|-----|--|------|-----|-------------|------|-----|------|--|
| DW | | P | LTR | DESCRIPTION | DATE | DWN | APVD | |
| | | | | SEE SHEET 1 | | | | |



4. SHIPPING BOX DIMENSION: 445mmX445mmX270mm



| | | |
|----------|-------------------|------------|
| 450 | 5 | 2250 |
| PCS/REEL | REEL/SHIPPING BOX | TOTAL Q'TY |

| | | | | | |
|--|--|---------------------|--|--|--|
| THIS DRAWING IS A CONTROLLED DOCUMENT. | | DWN | | TE Connectivity NAME DC POWER JACK CONNECTOR DIP TYPE (10.7A) | |
| DIMENSIONS: mm | | CHK | | | |
| TOLERANCES UNLESS OTHERWISE SPECIFIED: | | APVD | | | |
| 0 PLC ± - 1 PLC ± - 2 PLC ± - ±0.25 3 PLC ± - ±3 4 PLC ± - ANGLES ± - | | PRODUCT SPEC | | | |
| MATERIAL | | FINISH | | APPLICATION SPEC | |
| | | WEIGHT | | RESTRICTED TO | |
| CUSTOMER DRAWING | | SCALE NA | | SHEET 3 OF 3 | |
| | | DRAWING NO. A300779 | | REV B2 | |

Данный компонент на территории Российской Федерации

Вы можете приобрести в компании MosChip.

Для оперативного оформления запроса Вам необходимо перейти по данной ссылке:

<http://moschip.ru/get-element>

Вы можете разместить у нас заказ для любого Вашего проекта, будь то серийное производство или разработка единичного прибора.

В нашем ассортименте представлены ведущие мировые производители активных и пассивных электронных компонентов.

Нашей специализацией является поставка электронной компонентной базы двойного назначения, продукции таких производителей как XILINX, Intel (ex.ALTERA), Vicor, Microchip, Texas Instruments, Analog Devices, Mini-Circuits, Amphenol, Glenair.

Сотрудничество с глобальными дистрибьюторами электронных компонентов, предоставляет возможность заказывать и получать с международных складов практически любой перечень компонентов в оптимальные для Вас сроки.

На всех этапах разработки и производства наши партнеры могут получить квалифицированную поддержку опытных инженеров.

Система менеджмента качества компании отвечает требованиям в соответствии с ГОСТ Р ИСО 9001, ГОСТ РВ 0015-002 и ЭС РД 009

Офис по работе с юридическими лицами:

105318, г.Москва, ул.Щербаковская д.3, офис 1107, 1118, ДЦ «Щербаковский»

Телефон: +7 495 668-12-70 (многоканальный)

Факс: +7 495 668-12-70 (доб.304)

E-mail: info@moschip.ru

Skype отдела продаж:

moschip.ru

moschip.ru_4

moschip.ru_6

moschip.ru_9