

Installation Instructions for the AWM 5000 Series Microbridge Mass Airflow Sensor

ISSUE 4
PK 88762

GENERAL INFORMATION

The AWM5000 Series Microbridge Mass Airflow Sensors operate on the theory that airflow directed across the surface of a sensing element causes heat transfer. Output voltage varies in proportion to the mass of air or other gas flowing through a given sensor's inlet and outlet ports.

CURRENT SINK/SOURCE

Maximum current ratings are 10 mA sinking and 20 mA sourcing, governed by an LM224 operational amplifier in the final stage of the instrumentation amplifier.

MEDIA CONTAMINATION

Media flowing through the sensor should be free of condensing moisture and particulate contaminants. A 5 micron filter upstream of the sensing element reduces the risk of damage due to contaminants.

MOUNTING INSTRUCTIONS

Mount AWM5000 Series sensors with 6-32 screws. The use of washers below the screw head is recommended. Mounting torque is 1,1 N m (9.75 in lb) max. for steel screws, or 0,75 N m (6.75 in lb) max. for brass screws.

NOTICE

- When making flow connections to a mounted sensor, the AWM5000 **must** be supported at the flow adapter.
- If end adapters are twisted with respect to the flow tube during installation, the seal between O-ring and flow tube will be broken, causing a small temporary leak. The leak can be as high as 1 psi, or may remain within specification. It will self-heal as the O-ring conforms. About 85% of the leak will be gone within approximately 24 hours, with complete recovery within approximately 48 hours.
- Do not expose ports to forces greater than 1 kg [2 lb] in a direction perpendicular to the port centerline.
- Torque on ports should not exceed 4,52 N m [40 in lb].

ELECTRICAL CONNECTION

The AWM5000 Series accepts a latch detente connector, such as:

1. Amp part number 5-103956-3.
2. Sensing and Control part number SS-12143

Information and literature on the latch detente connector is available from Amp Product Information Center, 1-800-522-6752 or the Customer Hotline, 1-800-722-1111.

RECOMMENDED AMP LITERATURE

–	MTE Interconnection System (AMPMODU) Catalog
108-25034	Product Specification (technical performance information)
114-25026	Application Specification (describes product, proper assembly, full tooling information)
408-6790 408-9359	Instruction Sheet for assembly procedure

TO MAKE ELECTRICAL CONNECTIONS

1. Remove (unlatch) the connector from the AWM5000.
2. Hand-crimp the interface wire to the appropriate pin on connector. Suggested tool: AMP Hand-Crimp Tool, part number 58074-1 and terminating head 58336-1.
3. Insert the terminal contacts into the connector housing after the carrier strip (lead-frame) is removed.
4. Reconnect (latch) connector to the AWM5000 device.

CLEANING

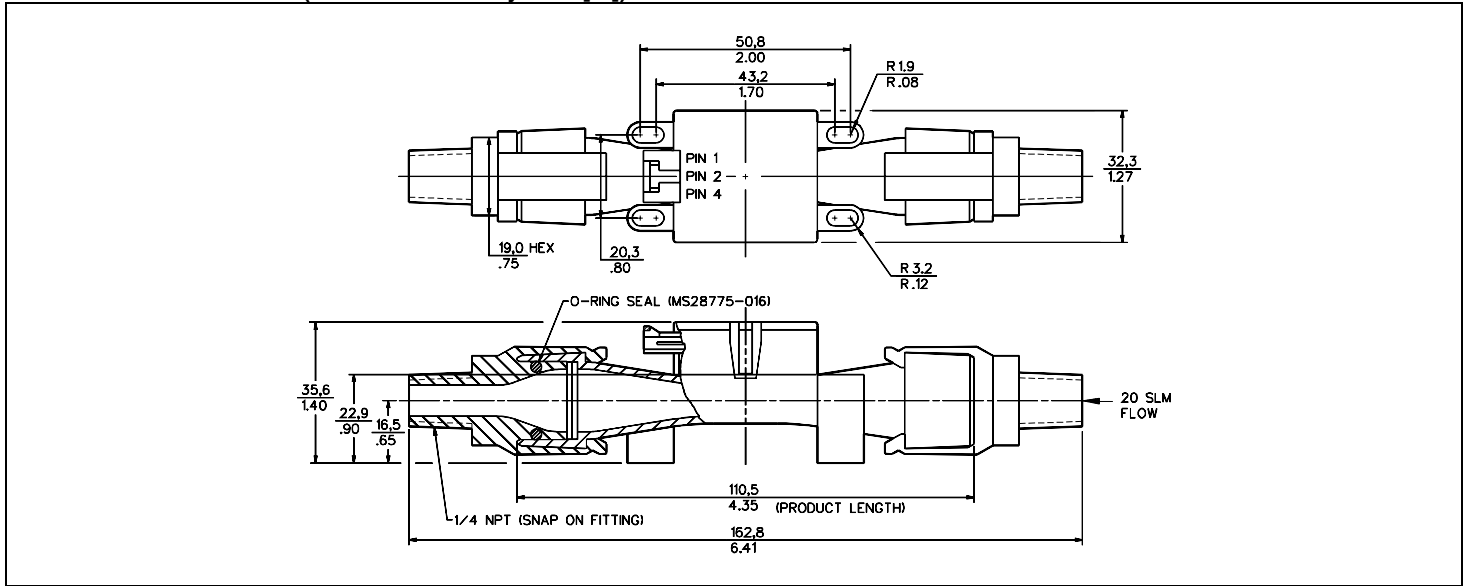
CAUTION

PRODUCT DAMAGE

- Do not use ultrasonics.
- Do not use III Tri-chloroethane, methylene chloride, methyl pyrrolidone or any oxidizing type acid such as formic acid.
- Cover the ends of the tube during cleaning because certain solvents may attack the epoxy which seals the chip tube to the ceramic substrate.

Failure to comply with these instructions may result in product damage.

MOUNTING DIMENSIONS (For reference only. mm/[in])

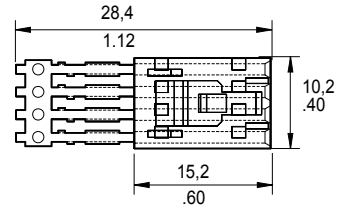


OUTPUT CONNECTIONS

Pin 1	+ Supply voltage
Pin 2	Ground
Pin 3	No connection
Pin 4	Output voltage

Note: Flow direction is marked on housing.

SS-12143 CONNECTOR



WARNING

PERSONAL INJURY
DO NOT USE these products as safety or emergency stop devices or in any other application where failure of the product could result in personal injury. **Failure to comply with these instructions could result in death or serious injury.**

WARRANTY/REMEDY

Honeywell warrants goods of its manufacture as being free of defective materials and faulty workmanship. Honeywell's standard product warranty applies unless agreed to otherwise by Honeywell in writing; please refer to your order acknowledgement or consult your local sales office for specific warranty details. If warranted goods are returned to Honeywell during the period of coverage, Honeywell will repair or replace, at its option, without charge those items it finds defective. **The foregoing is buyer's sole remedy and is in lieu of all other warranties, expressed or implied, including those of merchantability and fitness for a particular purpose. In no event shall Honeywell be liable for consequential, special, or indirect damages.**

While we provide application assistance personally, through our literature and the Honeywell web site, it is up to the customer to determine the suitability of the product in the application.

Specifications may change without notice. The information we supply is believed to be accurate and reliable as of this printing. However, we assume no responsibility for its use.

SALES AND SERVICE

Honeywell serves its customers through a worldwide network of sales offices, representatives and distributors. For application assistance, current specifications, pricing or name of the nearest Authorized Distributor, contact your local sales office or:

E-mail: info.sc@honeywell.com

Internet: www.honeywell.com/sensing

Phone and Fax:

Asia Pacific +65 6355-2828
+65 6445-3033 Fax
Europe +44 (0) 1698 481481
+44 (0) 1698 481676 Fax
Latin America +1-305-805-8188
+1-305-883-8257 Fax
USA/Canada +1-800-537-6945
+1-815-235-6847
+1-815-235-6545 Fax

Automation and Control Solutions

Sensing and Control

Honeywell

1985 Douglas Drive North

Minneapolis, MN 55422

www.honeywell.com/sensing

PK88762-4-EN IL50 GLO Printed in USA

January 2007

Copyright © 2007 Honeywell International Inc. All rights reserved.

Honeywell

Данный компонент на территории Российской Федерации

Вы можете приобрести в компании MosChip.

Для оперативного оформления запроса Вам необходимо перейти по данной ссылке:

<http://moschip.ru/get-element>

Вы можете разместить у нас заказ для любого Вашего проекта, будь то серийное производство или разработка единичного прибора.

В нашем ассортименте представлены ведущие мировые производители активных и пассивных электронных компонентов.

Нашей специализацией является поставка электронной компонентной базы двойного назначения, продукции таких производителей как XILINX, Intel (ex.ALTERA), Vicor, Microchip, Texas Instruments, Analog Devices, Mini-Circuits, Amphenol, Glenair.

Сотрудничество с глобальными дистрибьюторами электронных компонентов, предоставляет возможность заказывать и получать с международных складов практически любой перечень компонентов в оптимальные для Вас сроки.

На всех этапах разработки и производства наши партнеры могут получить квалифицированную поддержку опытных инженеров.

Система менеджмента качества компании отвечает требованиям в соответствии с ГОСТ Р ИСО 9001, ГОСТ РВ 0015-002 и ЭС РД 009

Офис по работе с юридическими лицами:

105318, г.Москва, ул.Щербаковская д.3, офис 1107, 1118, ДЦ «Щербаковский»

Телефон: +7 495 668-12-70 (многоканальный)

Факс: +7 495 668-12-70 (доб.304)

E-mail: info@moschip.ru

Skype отдела продаж:

moschip.ru

moschip.ru_4

moschip.ru_6

moschip.ru_9