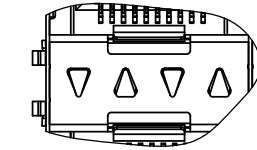
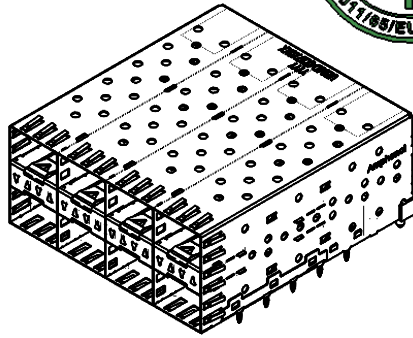
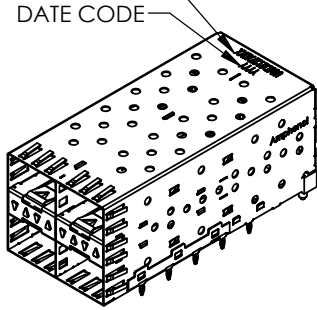




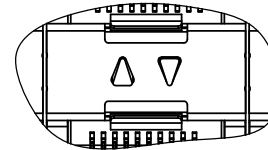
REVISIONS				
REV.	ECN	DESCRIPTION	DATE	APPROVED
A		PROPOSAL	MAR.27.14	J.SI

PART NUMBER
(LAST DIGIT INDICATING
PACKAGING TYPE, NOT
PRINTED ON THE PART)

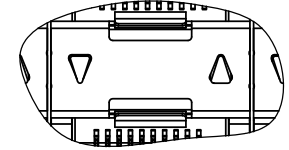
DATE CODE



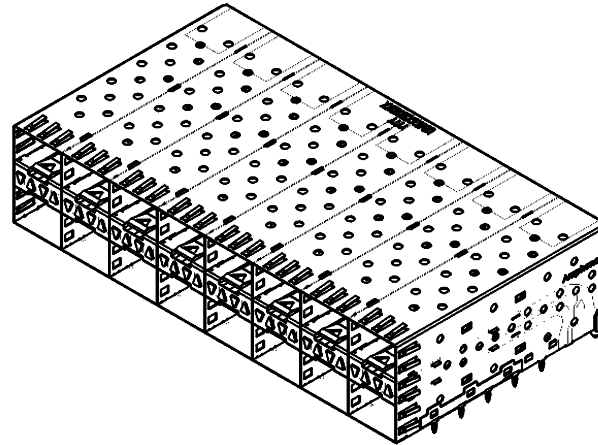
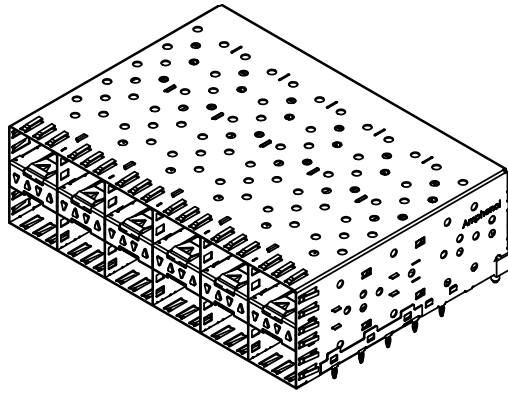
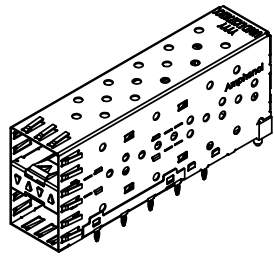
UE86-DX127-10XX1
(4 LIGHT PIPES PER 2X1)



UE86-DX127-20XX1
(2 INNER LIGHT PIPES PER 2X1)



UE86-DX127-30XX1
(2 INNER LIGHT PIPES PER 2X1)



MATERIAL: (RoHS COMPLIANT)

CAGE - PRESS FIT:
COPPER ALLOY

PLATING:

NICKEL 2.54 µm MIN.

CONNECTOR - PRESS FIT:

PLASTIC HOUSING:

LCP, FLAMMABILITY RATING UL94-V0.

CONTACTS:

PHOSPHOR BRONZE

PLATING OPTION:

SEE AMPHENOL PART NUMBER
CONFIGURATION FOR OPTIONS.

LIGHT PIPE:

CLEAR POLYCARBONATE, FLAMMABILITY
RATING UL94-V0.

PACKAGING:

TRAY PACKAGING.

TEMPERATURE RANGE:
-40°C TO +85°

AMPHENOL PART NUMBER CONFIGURATION

UE86 - D X 1 2 7 - X 0 X X 1

NUMBER OF PORTS

- 1 = 2X1
- 2 = 2X2
- 4 = 2X4
- 6 = 2X6
- 8 = 2X8

LIGHT PIPE CONFIGURATION

- 1 = 4 LIGHT PIPES PER 2X1
- 2 = 2 INNER LIGHT PIPES PER 2X1
- 3 = 2 OUTER LIGHT PIPES PER 2X1

PACKAGING

- 1 = TRAY

CAGE PLATING

- 2 = NICKEL
- 3 = MATTE TIN

PRESS FIT CONNECTOR PLATING

- 3 = 0.76 µm MIN. GOLD ON MATING AREA
- 3.81-7.62 µm MATTE TIN ON TERMINATION
- 6 = 0.38 µm MIN. GOLD ON MATING AREA
- 3.81-7.62 µm MATTE TIN ON TERMINATION

DO NOT SCALE DRAWING

THIS DOCUMENT CONTAINS PROPRIETARY INFORMATION AND SUCH INFORMATION MAY NOT BE DISCLOSED TO OTHERS FOR ANY PURPOSE OR USED FOR MANUFACTURING PURPOSES WITHOUT PERMISSION FROM AMPHENOL CANADA CORP.

UNLESS OTHERWISE SPECIFIED
DIMENSIONS ARE IN MILLIMETERS
TOLERANCES ARE:

DECIMALS	ANGLES
X.X ± 0.25	± 1°
X.XX ± 0.15	

MATERIAL AND FINISH

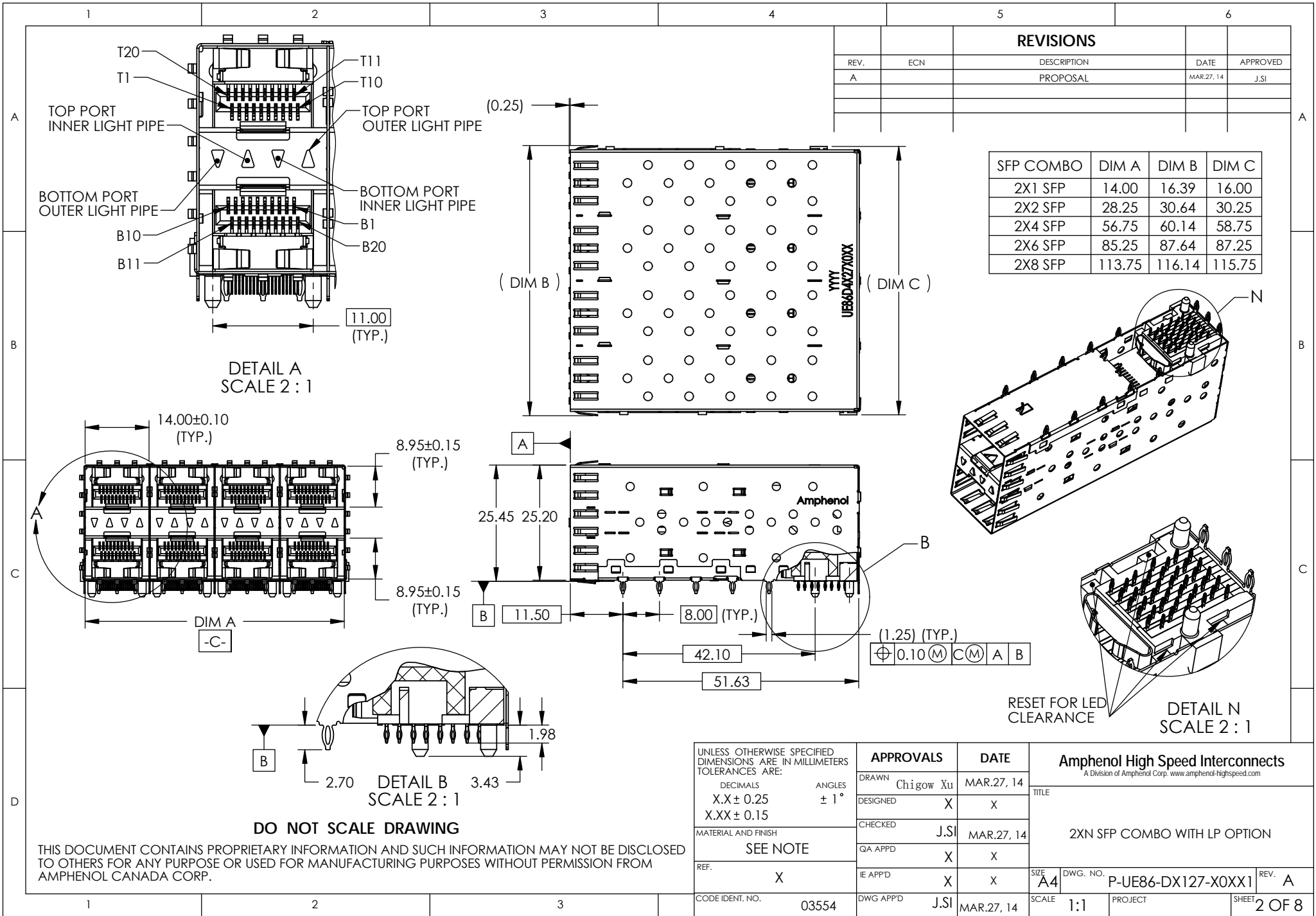
SEE NOTE

REF. X

CODE IDENT. NO. 03554

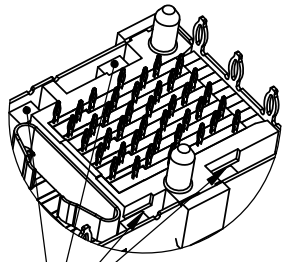
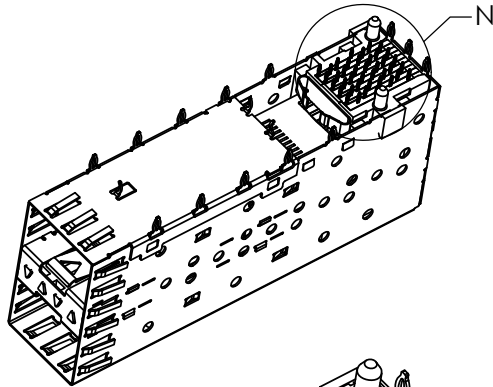
APPROVALS	DATE
DRAWN Chigov Xu	MAR.27.14
DESIGNED X	X
CHECKED J.SI	MAR.27.14
QA APP'D X	X
IE APP'D X	X
DWG APP'D J.SI	MAR.27.14

Amphenol High Speed Interconnects <small>A Division of Amphenol Corp. www.amphenol-highspeed.com</small>		SIZE	DWG. NO.	REV.
		A4	P-UE86-DX127-X0XX1	A
TITLE		SCALE	PROJECT	SHEET
2XN SFP COMBO WITH LP OPTION		2:3		1 OF 8



REVISIONS				
REV.	ECN	DESCRIPTION	DATE	APPROVED
A		PROPOSAL	MAR.27.14	J.SI

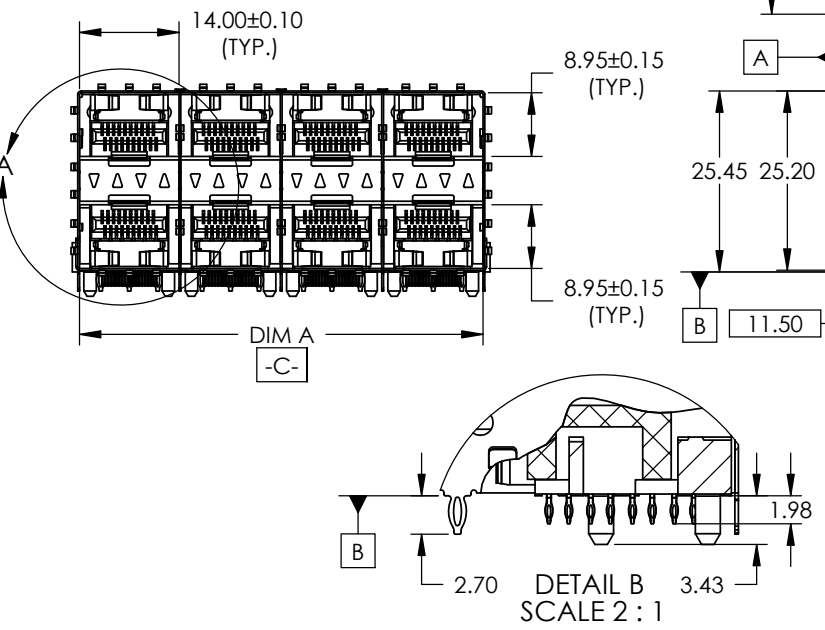
SFP COMBO	DIM A	DIM B	DIM C
2X1 SFP	14.00	16.39	16.00
2X2 SFP	28.25	30.64	30.25
2X4 SFP	56.75	60.14	58.75
2X6 SFP	85.25	87.64	87.25
2X8 SFP	113.75	116.14	115.75



RESET FOR LED CLEARANCE
 DETAIL N
 SCALE 2 : 1

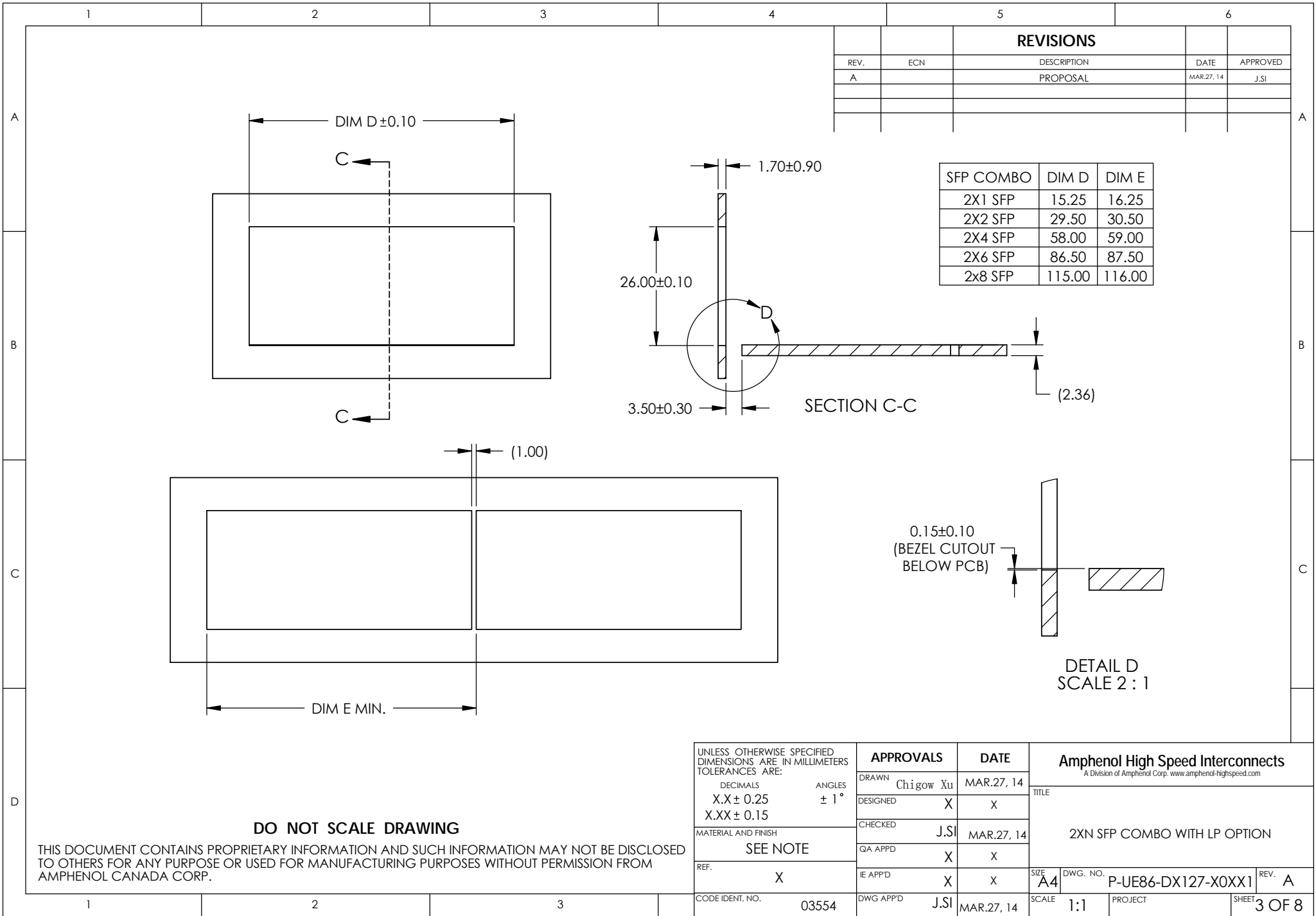
UNLESS OTHERWISE SPECIFIED DIMENSIONS ARE IN MILLIMETERS TOLERANCES ARE: DECIMALS ANGLES X.X ± 0.25 ± 1° X.XX ± 0.15	APPROVALS		DATE
	DRAWN	Chigow Xu	MAR.27.14
	DESIGNED	X	X
	CHECKED	J.SI	MAR.27.14
MATERIAL AND FINISH	SEE NOTE		QA APPD
REF.	X	IE APPD	X X
CODE IDENT. NO.	03554	DWG APPD	J.SI MAR.27.14

Amphenol High Speed Interconnects <small>A Division of Amphenol Corp. www.amphenol-highspeed.com</small>		
TITLE		
2XN SFP COMBO WITH LP OPTION		
SIZE A4	DWG. NO. P-UE86-DX127-XOXX1	REV. A
SCALE 1:1	PROJECT	SHEET 2 OF 8



DO NOT SCALE DRAWING

THIS DOCUMENT CONTAINS PROPRIETARY INFORMATION AND SUCH INFORMATION MAY NOT BE DISCLOSED TO OTHERS FOR ANY PURPOSE OR USED FOR MANUFACTURING PURPOSES WITHOUT PERMISSION FROM AMPHENOL CANADA CORP.



REVISIONS				
REV.	ECN	DESCRIPTION	DATE	APPROVED
A		PROPOSAL	MAR.27.14	J.SI

SFP COMBO	DIM D	DIM E
2X1 SFP	15.25	16.25
2X2 SFP	29.50	30.50
2X4 SFP	58.00	59.00
2X6 SFP	86.50	87.50
2X8 SFP	115.00	116.00

UNLESS OTHERWISE SPECIFIED DIMENSIONS ARE IN MILLIMETERS TOLERANCES ARE:		APPROVALS	DATE
DECIMALS	ANGLES	DRAWN Chigow Xu	MAR.27, 14
X.X ± 0.25	± 1°	DESIGNED X	X
X.XX ± 0.15		CHECKED J.SI	MAR.27, 14
MATERIAL AND FINISH		QA APP'D X	X
SEE NOTE		IE APP'D X	X
REF. X		DWG APP'D J.SI	MAR.27, 14

Amphenol High Speed Interconnects <small>A Division of Amphenol Corp. www.amphenol-highspeed.com</small>		
TITLE		
2XN SFP COMBO WITH LP OPTION		
SIZE A4	DWG. NO. P-UE86-DX127-XOXX1	REV. A
SCALE 1:1	PROJECT	SHEET 3 OF 8

DO NOT SCALE DRAWING

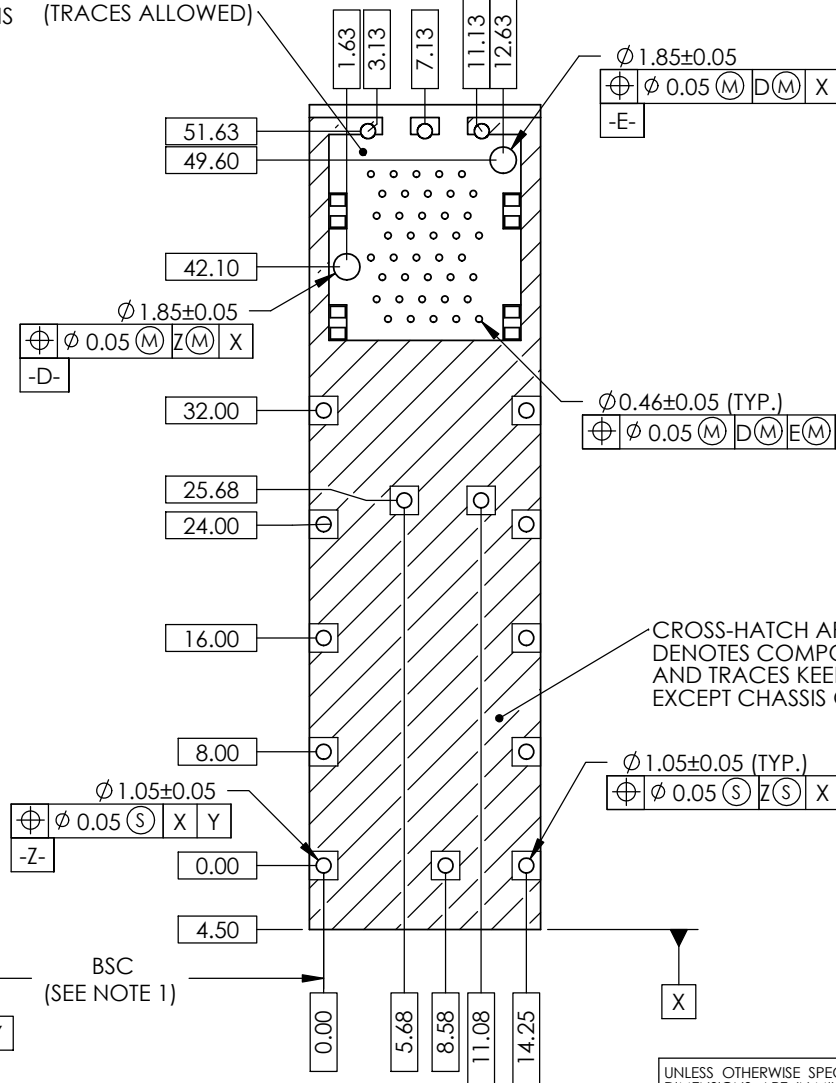
THIS DOCUMENT CONTAINS PROPRIETARY INFORMATION AND SUCH INFORMATION MAY NOT BE DISCLOSED TO OTHERS FOR ANY PURPOSE OR USED FOR MANUFACTURING PURPOSES WITHOUT PERMISSION FROM AMPHENOL CANADA CORP.

NOTES:

1. DATUM AND BASIC DIMENSIONS ESTABLISHED BY CUSTOMER.

2. 1.05 mm DIAMETER HOLES ARE CHASSIS GROUND (16 HOLES).

THIS AREA DENOTES COMPONENTS KEEP OUT (TRACES ALLOWED)



REVISIONS

REV.	ECN	DESCRIPTION	DATE	APPROVED
A		PROPOSAL	MAR.27.14	J.SI

2X1 PCB LAYOUT

DO NOT SCALE DRAWING

THIS DOCUMENT CONTAINS PROPRIETARY INFORMATION AND SUCH INFORMATION MAY NOT BE DISCLOSED TO OTHERS FOR ANY PURPOSE OR USED FOR MANUFACTURING PURPOSES WITHOUT PERMISSION FROM AMPHENOL CANADA CORP.

UNLESS OTHERWISE SPECIFIED DIMENSIONS ARE IN MILLIMETERS TOLERANCES ARE:		APPROVALS		DATE		Amphenol High Speed Interconnects A Division of Amphenol Corp. www.amphenol-highspeed.com			
DECIMALS	ANGLES	DRAWN	Chigow Xu	MAR.27, 14	TITLE				
X.X ± 0.25	± 1°	DESIGNED	X	X	2XN SFP COMBO WITH LP OPTION				
X.XX ± 0.15		CHECKED	J.SI	MAR.27, 14					
MATERIAL AND FINISH		QA APP'D	X	X					
SEE NOTE		IE APP'D	X	X					
REF.	X	DWG APP'D	J.SI	MAR.27, 14	SIZE	DWG. NO.	P-UE86-DX127-XOXX1	REV.	A
CODE IDENT. NO.	03554	SCALE	1:1	PROJECT	SHEET		4 OF 8		

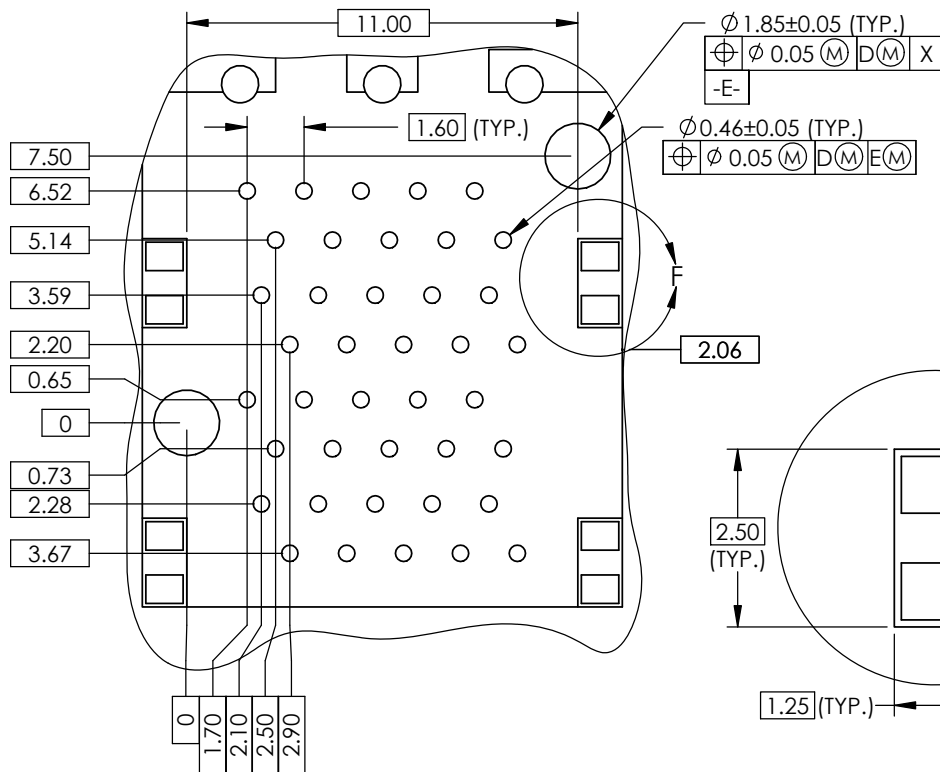
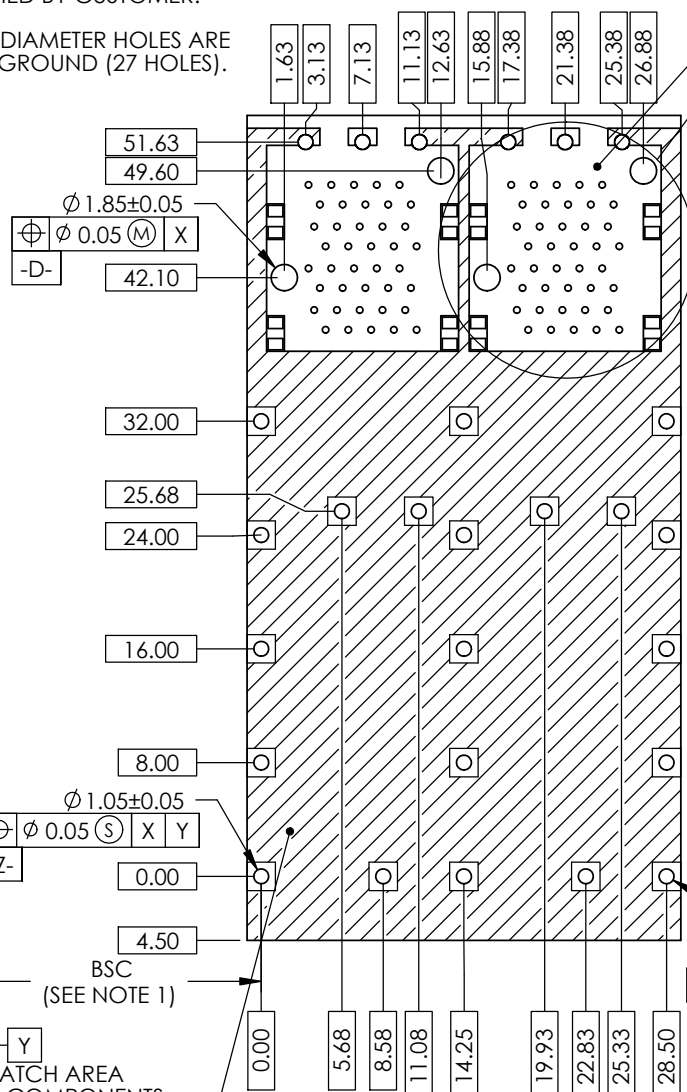
NOTES:

- DATUM AND BASIC DIMENSIONS ESTABLISHED BY CUSTOMER.
- 1.05 mm DIAMETER HOLES ARE CHASSIS GROUND (27 HOLES).

REVISIONS

REV.	ECN	DESCRIPTION	DATE	APPROVED
A		PROPOSAL	MAR.27.14	J.SI

THIS AREA DENOTES COMPONENTS KEEP OUT (TRACES ALLOWED)



DETAIL E
SCALE 5 : 1

DETAIL F
SCALE 10 : 1

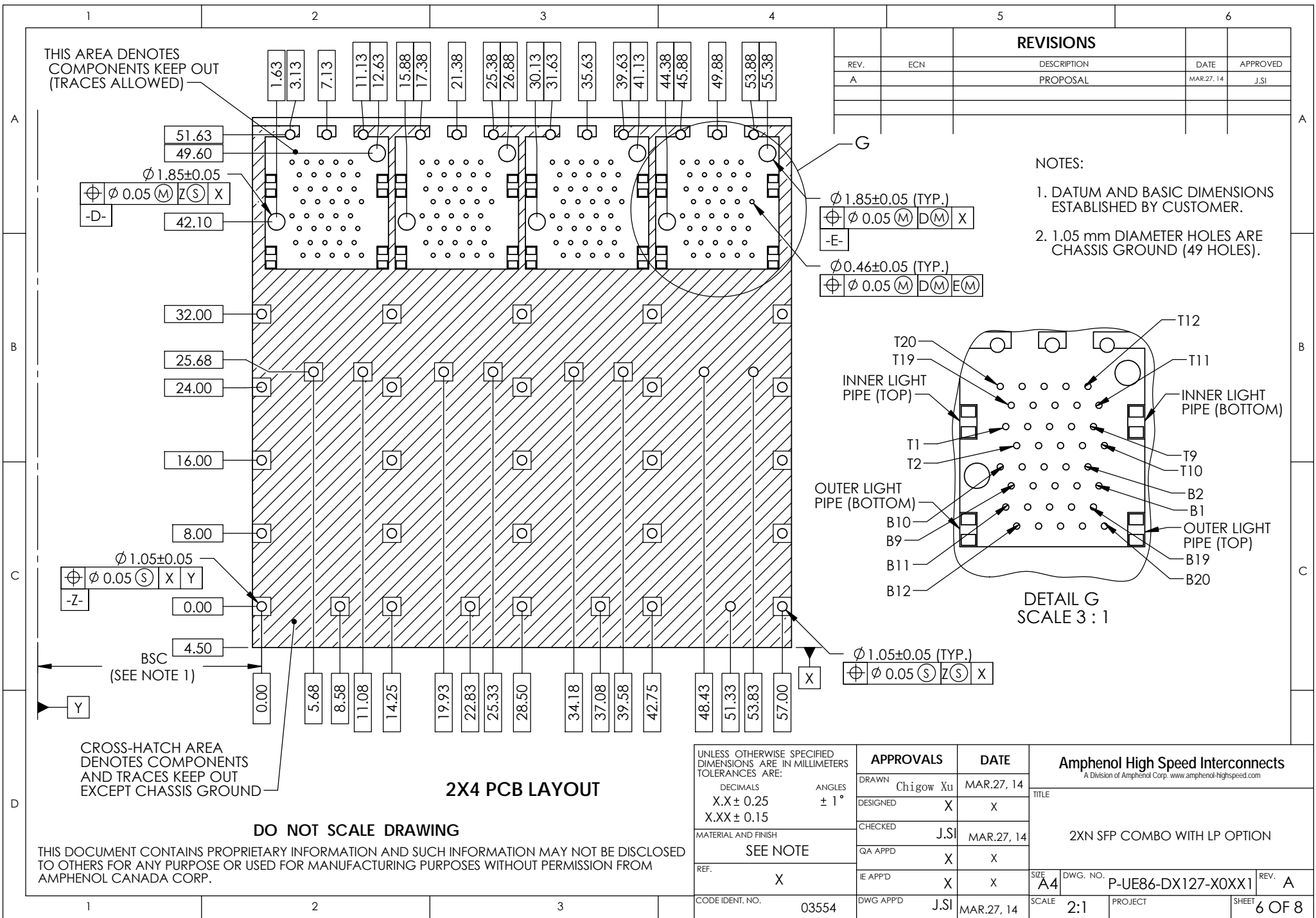
DO NOT SCALE DRAWING 2X2 PCB LAYOUT

CROSS-HATCH AREA DENOTES COMPONENTS AND TRACES KEEP OUT EXCEPT CHASSIS GROUND

THIS DOCUMENT CONTAINS PROPRIETARY INFORMATION AND SUCH INFORMATION MAY NOT BE DISCLOSED TO OTHERS FOR ANY PURPOSE OR USED FOR MANUFACTURING PURPOSES WITHOUT PERMISSION FROM AMPHENOL CANADA CORP.

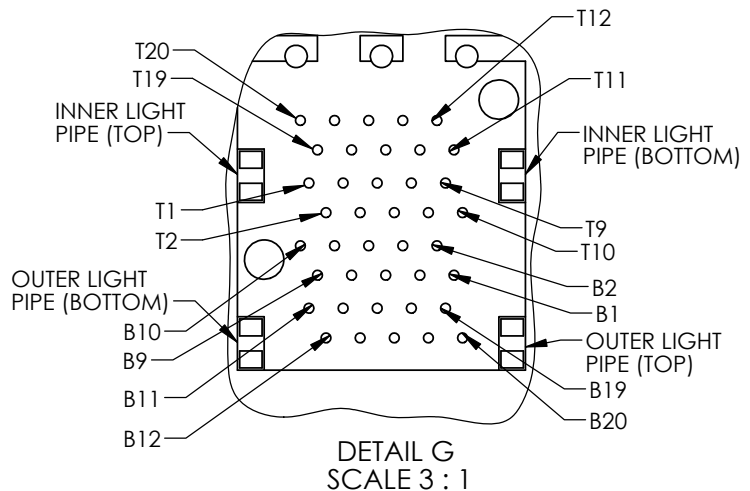
UNLESS OTHERWISE SPECIFIED DIMENSIONS ARE IN MILLIMETERS TOLERANCES ARE: DECIMALS X.X ± 0.25 X.XX ± 0.15 ANGLES ± 1° MATERIAL AND FINISH SEE NOTE REF. X CODE IDENT. NO. 03554	APPROVALS		DATE
	DRAWN Chigow Xu		MAR.27, 14
	DESIGNED X		X
	CHECKED J.SI		MAR.27, 14
	QA APPD X		X
	IE APPD X		X
	DWG APPD J.SI		MAR.27, 14

Amphenol High Speed Interconnects A Division of Amphenol Corp. www.amphenol-highspeed.com			
TITLE 2XN SFP COMBO WITH LP OPTION			
SIZE A4	DWG. NO. P-UE86-DX127-XOXX1	REV. A	
SCALE 2:1	PROJECT	SHEET 5 OF 8	



REVISIONS				
REV.	ECN	DESCRIPTION	DATE	APPROVED
A		PROPOSAL	MAR.27.14	J.SI

- NOTES:
1. DATUM AND BASIC DIMENSIONS ESTABLISHED BY CUSTOMER.
 2. 1.05 mm DIAMETER HOLES ARE CHASSIS GROUND (49 HOLES).



2X4 PCB LAYOUT

DO NOT SCALE DRAWING

THIS DOCUMENT CONTAINS PROPRIETARY INFORMATION AND SUCH INFORMATION MAY NOT BE DISCLOSED TO OTHERS FOR ANY PURPOSE OR USED FOR MANUFACTURING PURPOSES WITHOUT PERMISSION FROM AMPHENOL CANADA CORP.

UNLESS OTHERWISE SPECIFIED DIMENSIONS ARE IN MILLIMETERS TOLERANCES ARE:		APPROVALS		DATE		Amphenol High Speed Interconnects A Division of Amphenol Corp. www.amphenol-highspeed.com	
DECIMALS X.X ± 0.25 ANGLES ± 1° X.XX ± 0.15		DRAWN Chigow Xu	MAR.27, 14				
MATERIAL AND FINISH SEE NOTE		DESIGNED X	X			2XN SFP COMBO WITH LP OPTION	
REF. X		CHECKED J.SI	MAR.27, 14	QA APPD X	X	SIZE A4	DWG. NO. P-UE86-DX127-XOXX1
CODE IDENT. NO. 03554		IE APPD X	X	SCALE 2:1	PROJECT	REV. A	SHEET 6 OF 8

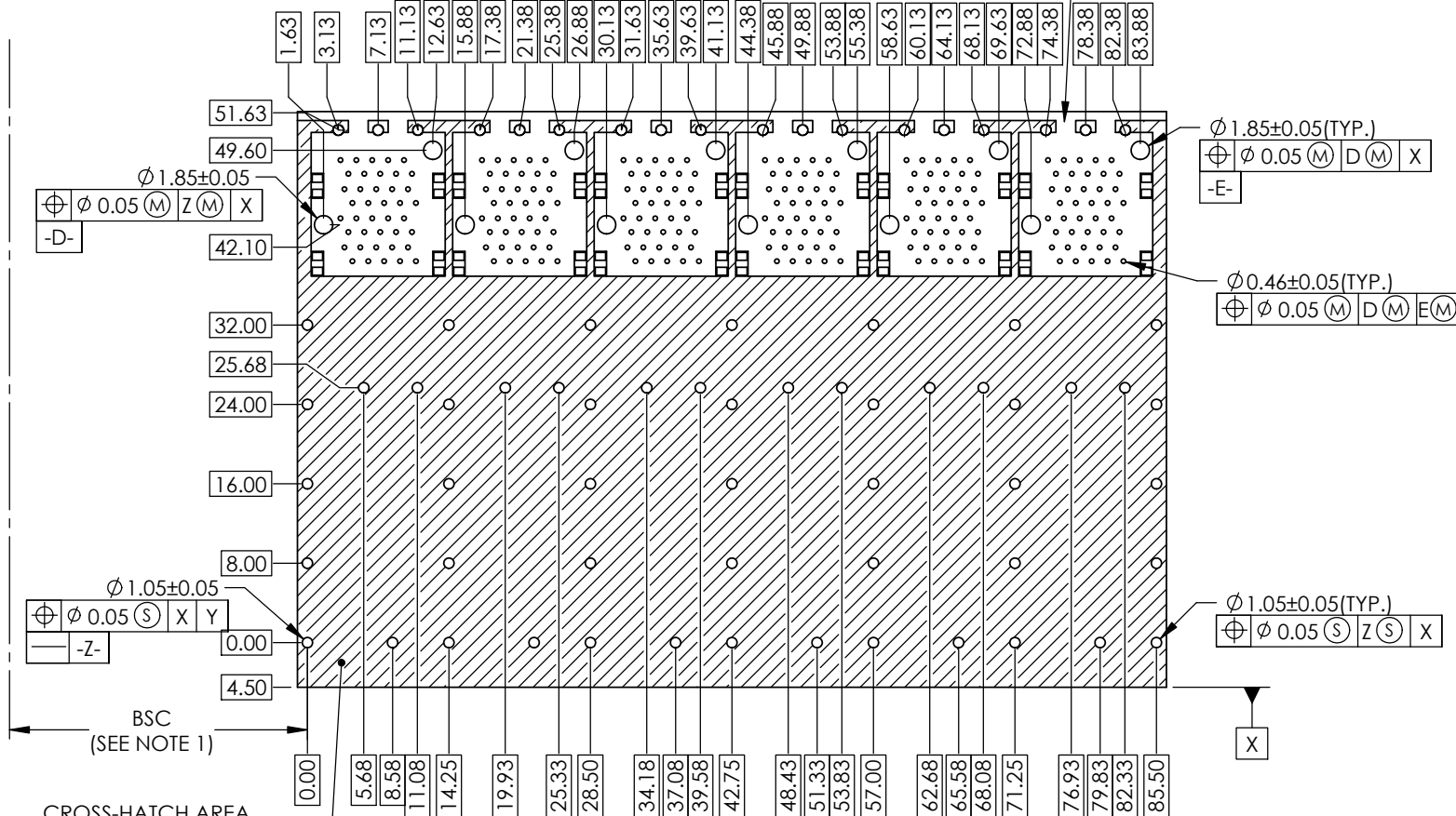
NOTES:

- DATUM AND BASIC DIMENSIONS ESTABLISHED BY CUSTOMER.
- 1.05 mm DIAMETER HOLES ARE CHASSIS GROUND (71 HOLES).

THIS AREA DENOTES COMPONENTS KEEP OUT (TRACES ALLOWED)

REVISIONS

REV.	ECN	DESCRIPTION	DATE	APPROVED
A		PROPOSAL	MAR.27.14	J.SI



2X6 PCB LAYOUT

DO NOT SCALE DRAWING

THIS DOCUMENT CONTAINS PROPRIETARY INFORMATION AND SUCH INFORMATION MAY NOT BE DISCLOSED TO OTHERS FOR ANY PURPOSE OR USED FOR MANUFACTURING PURPOSES WITHOUT PERMISSION FROM AMPHENOL CANADA CORP.

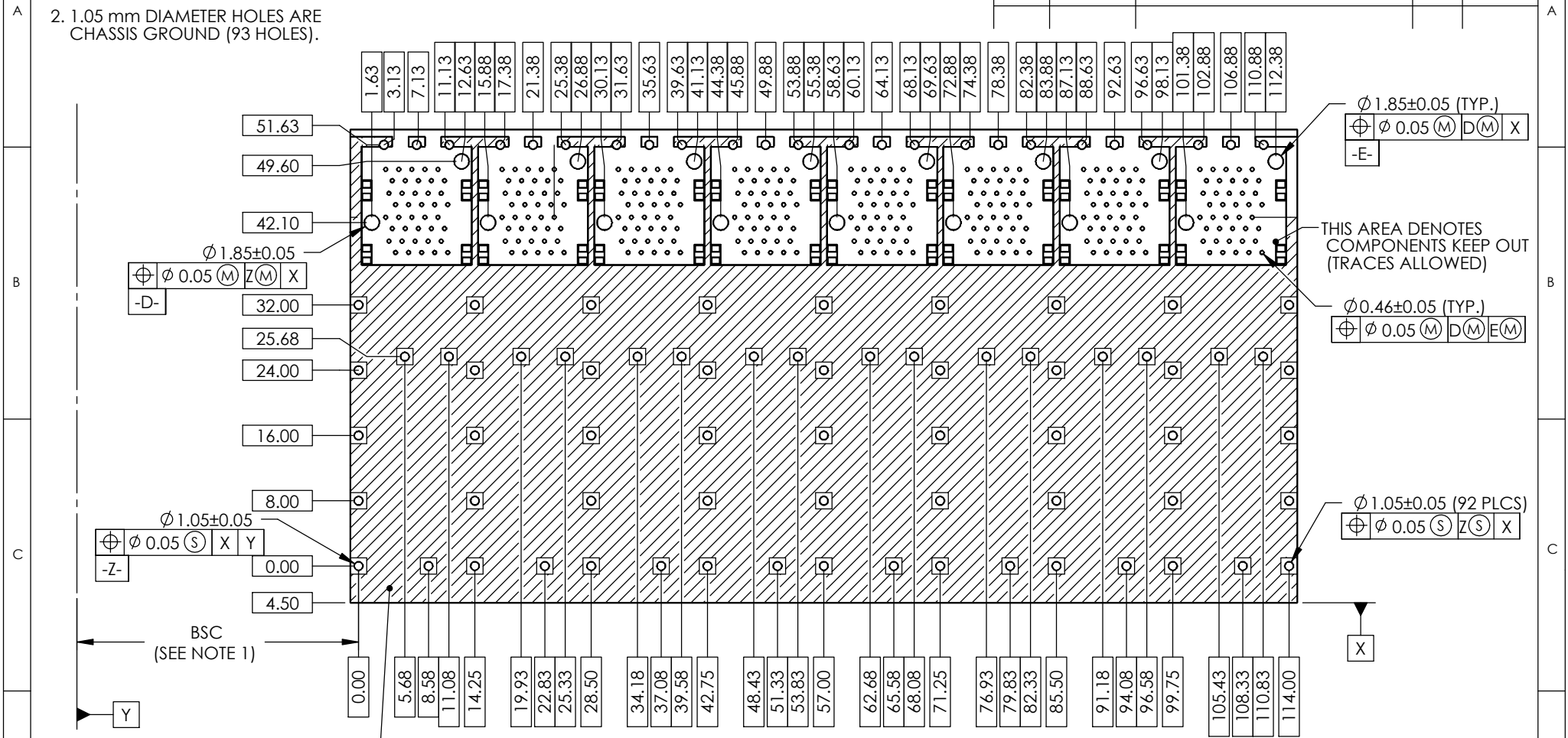
UNLESS OTHERWISE SPECIFIED DIMENSIONS ARE IN MILLIMETERS TOLERANCES ARE: DECIMALS X.X ± 0.25 X.XX ± 0.15 MATERIAL AND FINISH SEE NOTE REF. X CODE IDENT. NO. 03554	APPROVALS	DATE	Amphenol High Speed Interconnects A Division of Amphenol Corp. www.amphenol-highspeed.com TITLE 2XN SFP COMBO WITH LP OPTION SIZE A4 DWG. NO. P-UE86-DX127-XOXX1 REV. A SCALE 1:2 PROJECT SHEET 7 OF 8
	DRAWN Chigow Xu	MAR.27.14	
	DESIGNED X	X	
	CHECKED J.SI	MAR.27.14	
	QA APPD X	X	
	IE APPD X	X	
	DWG APPD J.SI	MAR.27.14	

NOTES:

- DATUM AND BASIC DIMENSIONS ESTABLISHED BY CUSTOMER.
- 1.05 mm DIAMETER HOLES ARE CHASSIS GROUND (93 HOLES).

REVISIONS

REV.	ECN	DESCRIPTION	DATE	APPROVED
A		PROPOSAL	MAR.27.14	J.SI



CROSS-HATCH AREA DENOTES COMPONENTS AND TRACES KEEP OUT EXCEPT CHASSIS GROUND

2X8 PCB LAYOUT

DO NOT SCALE DRAWING

THIS DOCUMENT CONTAINS PROPRIETARY INFORMATION AND SUCH INFORMATION MAY NOT BE DISCLOSED TO OTHERS FOR ANY PURPOSE OR USED FOR MANUFACTURING PURPOSES WITHOUT PERMISSION FROM AMPHENOL CANADA CORP.

UNLESS OTHERWISE SPECIFIED DIMENSIONS ARE IN MILLIMETERS TOLERANCES ARE:		APPROVALS		DATE		Amphenol High Speed Interconnects A Division of Amphenol Corp. www.amphenol-highspeed.com	
DECIMALS	ANGLES	DRAWN	Chigow Xu	MAR.27.14	TITLE		
X.X ± 0.25	± 1°	DESIGNED	X	X	2XN SFP COMBO WITH LP OPTION		
X.XX ± 0.15		CHECKED	J.SI	MAR.27.14			
MATERIAL AND FINISH		QA APPD	X	X	SIZE	DWG. NO.	REV.
SEE NOTE		IE APPD	X	X	A4	P-UE86-DX127-XOXX1	A
REF.	X	DWG APPD	J.SI	MAR.27.14	SCALE	PROJECT	SHEET
CODE IDENT. NO.	03554				1:1		8 OF 8

Данный компонент на территории Российской Федерации

Вы можете приобрести в компании MosChip.

Для оперативного оформления запроса Вам необходимо перейти по данной ссылке:

<http://moschip.ru/get-element>

Вы можете разместить у нас заказ для любого Вашего проекта, будь то серийное производство или разработка единичного прибора.

В нашем ассортименте представлены ведущие мировые производители активных и пассивных электронных компонентов.

Нашей специализацией является поставка электронной компонентной базы двойного назначения, продукции таких производителей как XILINX, Intel (ex.ALTERA), Vicor, Microchip, Texas Instruments, Analog Devices, Mini-Circuits, Amphenol, Glenair.

Сотрудничество с глобальными дистрибьюторами электронных компонентов, предоставляет возможность заказывать и получать с международных складов практически любой перечень компонентов в оптимальные для Вас сроки.

На всех этапах разработки и производства наши партнеры могут получить квалифицированную поддержку опытных инженеров.

Система менеджмента качества компании отвечает требованиям в соответствии с ГОСТ Р ИСО 9001, ГОСТ РВ 0015-002 и ЭС РД 009

Офис по работе с юридическими лицами:

105318, г.Москва, ул.Щербаковская д.3, офис 1107, 1118, ДЦ «Щербаковский»

Телефон: +7 495 668-12-70 (многоканальный)

Факс: +7 495 668-12-70 (доб.304)

E-mail: info@moschip.ru

Skype отдела продаж:

moschip.ru

moschip.ru_4

moschip.ru_6

moschip.ru_9