

FEATURES

- Compatible with MityARM-335x based Development Kits from Critical Link
- WiFi Support
 - IEEE 802.11 b/g/n
- Bluetooth Support
 - 2.1+EDR
 - Power Class 1.5
- Utilizing LSR's TiWi-R2 Module
 - Based on TI WL1271 Transceiver



(1.7" x 1.8" – actual size)

DESCRIPTION

The CL TiWi-R2 Expansion Kit is compatible with Critical Link's line of MityARM-335x based development kits; one is required to interface with this expansion kit. All MityARM-335x based System on Modules support the CL TiWi-R2 expansion kit and can be added to a development kit to add WiFi and Bluetooth functionality quickly and easily.

Each kit comes complete with a U.FL cable and a 2.4GHz 2dbi external antenna. It seamlessly integrates into the Sitara™ application processor that is used in Critical Links MityARM-335x System on Modules. It is based upon the TiWi-R2 from LS Research utilizing a Texas Instruments WL1271 Transceiver.

CL TiWi-R2 Interface Description

The CL TiWi-R2 interfaces directly with a MityARM-335x Development Kit through the 41-pin Hirose connector on the bottom of the Development Kit, J700. This interface provides the necessary communications and voltage signals used by the CL TiWi-R2 Expansion Kit.

Linux Driver and API examples are available to support the WiFi and Bluetooth functionality. The 802.11 b/g/n WiFi interface works directly with the Linux operating system and common wireless LAN utilities such as WPA Supplicant and WPA_CLI are compatible.

For further information concerning the configuration and specifications of the TiWi-R2 module that the kit is based upon please visit LS Research: <http://www.lsr.com/wireless-products/tiwi-r2>

CL TiWi-R2 Electrical Description

The CL TiWi-R2 Expansion Kit provides standard WiFi IEEE 802.11 data rates up to 65Mbps. The communications interface is routed to I2C0 on the MityARM-335x module that is installed in a MityARM-335x Development Kit.

The electrical interface between the CL TiWi-R2 Expansion Kit and MityARM-335x based Development Kit is provided via the 41-pin Hirose header described in Table 1.

Please reference the MityARM-335x Development Kit documentation for further details on the pin-out of this connector.

CL TiWi-R2 Expansion Kit Pinout

Table 2 shows the 41-pin Hirose header, J1, used to interface the CL TiWi-R2 Expansion Kit to a MityARM-335x based development kit.

Table 1: CL TiWi-R2 Expansion Kit 41-Pin Header

Pin	Name	Type	Note
1	SPI_CSX/SDIO_D3_B	I/O	
2	+3.3V	Power	
3	SDIO_D2_B	I/O	
4	+3.3V	Power	
5	SDIO_D1_B	I/O	
6	GND	Power	
7	SPI_DOUT/SDIO_D0_B	I/O	
8	Reserved	-	
9	RESETn	I	
10	Reserved	-	
11	CB_HOST_WL_IRQ_3V3	I/O	
12	Reserved	-	
13	UART_IRQ	O	
14	Reserved	-	
15	Reserved	-	
16	Reserved	-	
17	Reserved	-	
18	GND	Power	
19	Reserved	-	
20	Reserved	-	
21	Reserved	-	
22	SPI_DIN/SDIO_CMD_B	I/O	
23	Reserved	-	
24	Reserved	-	
25	Reserved	-	
26	Reserved	-	
27	Reserved	-	
28	Reserved	-	
29	Reserved	-	
30	HOST_CB_SPI/SDIO_CLK_B	I/O	
31	Reserved	-	
32	GND	Power	
33	GND	Power	
34	VIO_1P8	Power	
35	Reserved	-	
36	Reserved	-	
37	HOST_CB_WL_EN_3V3	I/O	
38	Reserved	-	
39	I2C0_SDA	I/O	
40	Reserved	-	
41	I2C_SCL	I/O	

ABSOLUTE MAXIMUM RATINGS

If Military/Aerospace specified cards are required, please contact the Critical Link Sales Office or unit Distributors for availability and specifications.

Maximum Supply Voltage, Vcc 3.4 V

Storage Temperature Range -65 to 85C

OPERATING CONDITIONS

Industrial Temperature Range -40 to +85C

Humidity 0 to 95%
Non-condensing

ELECTRICAL CHARACTERISTICS

Symbol	Parameter	Conditions	Min	Typ	Max	Units
Vcc	Voltage supply, 3.3 volt input.			3.3	3.4	Volts
Icc	Quiescent Current draw, 3.3 volt input			TBD	TBD	Milliamps

ORDERING INFORMATION

The following table lists the orderable module configurations. For shipping status, availability, and lead time of these or other configurations please contact your Critical Link representative.

A compatible 802.11 antenna and cable (may vary) are provided with each CL TiWi-R2 Expansion Kit.

Table 2: Orderable Model Numbers

Part Number	Protocol(s) Supported
80-000535	802.11 b/g/n and Bluetooth 2.1



MECHANICAL INTERFACE

A mechanical outline of the CL TiWi-R2 Expansion Board is illustrated below.

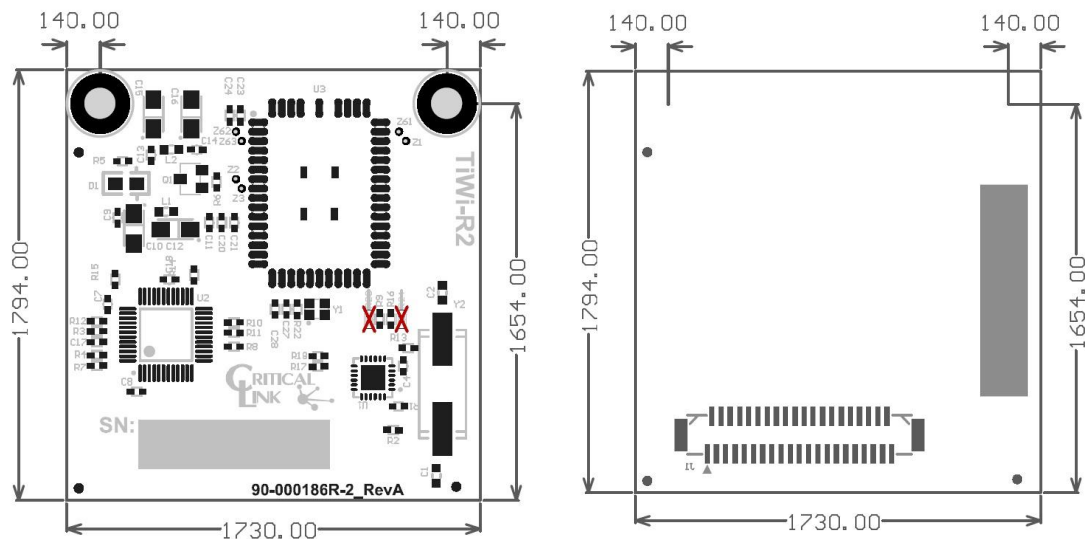


Figure 1: Dimensions 1.73" x 1.79" – Top and Bottom Mechanicals

REVISION HISTORY

Date	Change Description
10-OCT-2012	Initial release.
17-OCT-2012	Update part number
26-OCT-2012	Update product images

Данный компонент на территории Российской Федерации

Вы можете приобрести в компании MosChip.

Для оперативного оформления запроса Вам необходимо перейти по данной ссылке:

<http://moschip.ru/get-element>

Вы можете разместить у нас заказ для любого Вашего проекта, будь то серийное производство или разработка единичного прибора.

В нашем ассортименте представлены ведущие мировые производители активных и пассивных электронных компонентов.

Нашей специализацией является поставка электронной компонентной базы двойного назначения, продукции таких производителей как XILINX, Intel (ex.ALTERA), Vicor, Microchip, Texas Instruments, Analog Devices, Mini-Circuits, Amphenol, Glenair.

Сотрудничество с глобальными дистрибьюторами электронных компонентов, предоставляет возможность заказывать и получать с международных складов практически любой перечень компонентов в оптимальные для Вас сроки.

На всех этапах разработки и производства наши партнеры могут получить квалифицированную поддержку опытных инженеров.

Система менеджмента качества компании отвечает требованиям в соответствии с ГОСТ Р ИСО 9001, ГОСТ РВ 0015-002 и ЭС РД 009

Офис по работе с юридическими лицами:

105318, г.Москва, ул.Щербаковская д.3, офис 1107, 1118, ДЦ «Щербаковский»

Телефон: +7 495 668-12-70 (многоканальный)

Факс: +7 495 668-12-70 (доб.304)

E-mail: info@moschip.ru

Skype отдела продаж:

moschip.ru

moschip.ru_4

moschip.ru_6

moschip.ru_9