

# "High Frequency Ceramic Solutions"

**802.11 Dual Band 2.45/5 GHz Mini Chip Antenna. WiFi, WLAN, IoT**

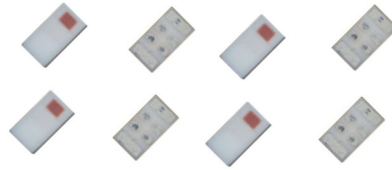
**P/N 2450AD14A5500**

Detail Specification: 11/6/2018

Page 1 of 6

This is the Web version of this datasheet, for the full datasheet, please contact us at: <https://www.johansontechnology.com/ask-a-question>

## General Specifications

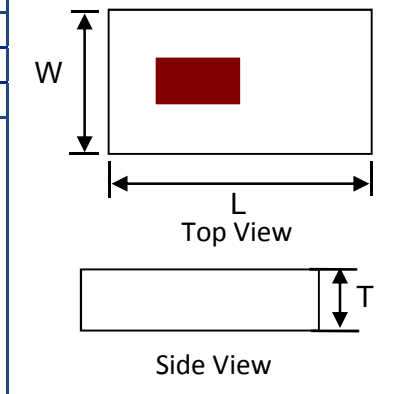
|                                |                          |                          |   |  |                              |                |
|--------------------------------|--------------------------|--------------------------|---|--|------------------------------|----------------|
| <b>Part Number</b>             | 2450AD14A5500            |                          | Let us help you with the antenna design, optimization, and tuning!<br><a href="https://www.johansontechnology.com/ipc-antenna-services">https://www.johansontechnology.com/ipc-antenna-services</a> |  |                              |                |
| <b>Frequency (MHz)</b>         | 2400 - 2480              | 5150 - 5850              |   |  |                              |                |
| <b>Ave. Rad Efficiency</b>     | 60%                      | 80%                      |   |  |                              |                |
| <b>Peak Gain (dBi typ.)</b>    | 1.0 dBi typ. (XZ-Total)  | 4.0 dBi typ. (XZ-Total)  |   |  |                              |                |
| <b>Average Gain (dBi typ.)</b> | -3.5 dBi typ. (XZ-Total) | -2.5 dBi typ. (XZ-Total) |   |  |                              |                |
| <b>Return Loss (dB)</b>        | 6 min.                   | 6 min.                   |   |  | <b>Storage Period</b>        | 18 months max. |
| <b>Impedance</b>               | 50 Ω                     |                          |   |  | <b>Storage Temperature</b>   | -40 to +85°C   |
| <b>Input Power</b>             | 2 Watts max. (CW)        |                          |   |  | <b>Operating Temperature</b> | -40 to +85°C   |
|                                |                          |                          |   |  | <b>Reel Quantity</b>         | 4000pcs        |

## Part Number Explanation

| P/N Suffix | Packing Style    | Bulk (loose)                                | Suffix = S      | e.g. 2450AD14A5500S        |
|------------|------------------|---|-----------------|----------------------------|
|            |                  | T & R                                       | Suffix = T      | e.g. 2450AD14A5500T        |
|            |                  | 100% Tin                                    | Suffix = T or S | e.g. 2450AD14A5500(T or S) |
|            | Evaluation Board | 2450AD14A5500-EB1SMA & 2450AD14A5500-EB2SMA |                 |                            |

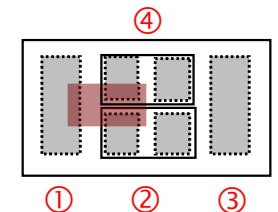
## Mechanical Dimensions

|          | In            | mm          |
|----------|---------------|-------------|
| <b>L</b> | 0.063 ± 0.004 | 1.60 ± 0.10 |
| <b>W</b> | 0.031 ± 0.004 | 0.80 ± 0.10 |
| <b>T</b> | 0.016 max.    | 0.40 max.   |



## Terminal Configuration

| No. | Function |
|-----|----------|
| 1   | GND      |
| 2   | FEED     |
| 3   | NC       |
| 4   | NC       |



Top View looking "through" the component

If you'd like the complete datasheet which includes detailed gain performance, layout guidelines, application notes, small WiFi application layout, send us as message at:

<https://www.johansontechnology.com/ask-a-question>

As a bonus, you'll be assigned an RF Engineer to assist you in the design for free!

Johanson Technology, Inc. reserves the right to make design changes without notice.  
All sales are subject to Johanson Technology, Inc. terms and conditions.

802.11 Dual Band 2.45/5 GHz Mini Chip Antenna. WiFi, WLAN, IoT

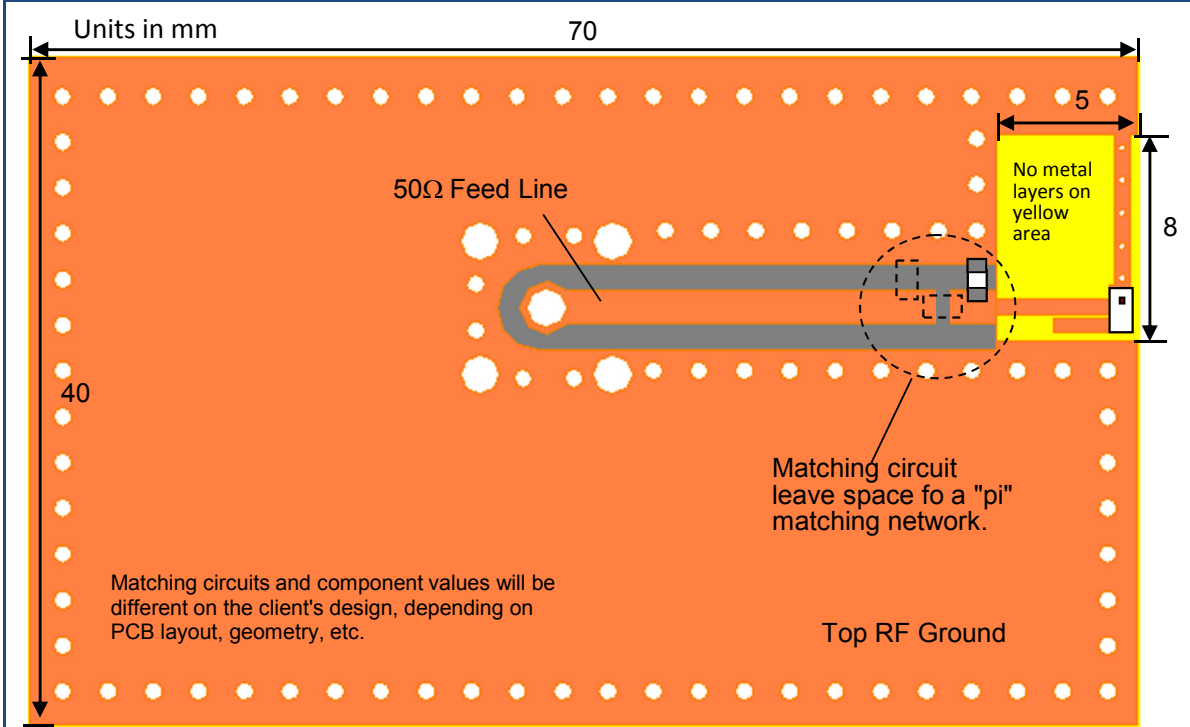
P/N 2450AD14A5500

Detail Specification: 11/6/2018

Page 2 of 6

This is the Web version of this datasheet, for the full datasheet, please contact us at: <https://www.johansontechnology.com/ask-a-question>

## Mounting Considerations 1: Evaluation Board, 65x70mm (Scenario 1 Terminal Configuration)



To order the ABOVE pre-tuned 50Ω EVB with a female SMA connector click here: <https://www.johansontechnology.com/request-a-sample>

Would you like the layout file of the above? Have antenna tuning issues? Please contact us if you have any questions regarding the implementation of this antenna in your PCB's layout. We'll be happy to guide you to maximize the antenna's performance.

If you'd like the complete datasheet which includes detailed gain performance, layout guidelines, application notes, small WiFi application layout, send us as message at:

<https://www.johansontechnology.com/ask-a-question>

As a bonus, you'll be assigned an RF Engineer to assist you in the design for free!

Johanson Technology, Inc. reserves the right to make design changes without notice.  
All sales are subject to Johanson Technology, Inc. terms and conditions.

802.11 Dual Band 2.45/5 GHz Mini Chip Antenna. WiFi, WLAN, IoT

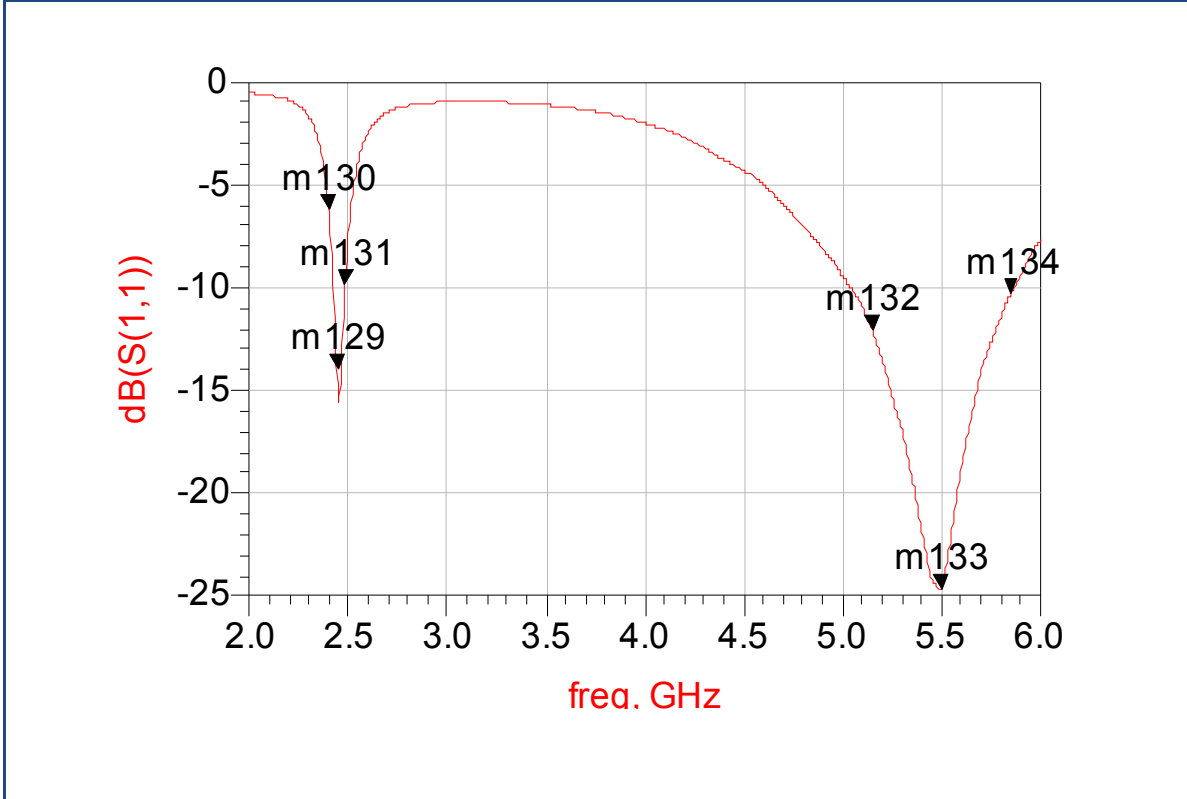
P/N 2450AD14A5500

Detail Specification: 11/6/2018

Page 3 of 6

This is the Web version of this datasheet, for the full datasheet, please contact us at: <https://www.johansontechnology.com/ask-a-question>

## Mounting Considerations 2: Typical Electrical Performance (T=25°C)



If you'd like the complete datasheet which includes detailed gain performance, layout guidelines, application notes, small WiFi application layout, send us as message at:

<https://www.johansontechnology.com/ask-a-question>

As a bonus, you'll be assigned an RF Engineer to assist you in the design for free!

Johanson Technology, Inc. reserves the right to make design changes without notice.  
All sales are subject to Johanson Technology, Inc. terms and conditions.

802.11 Dual Band 2.45/5 GHz Mini Chip Antenna. WiFi, WLAN, IoT

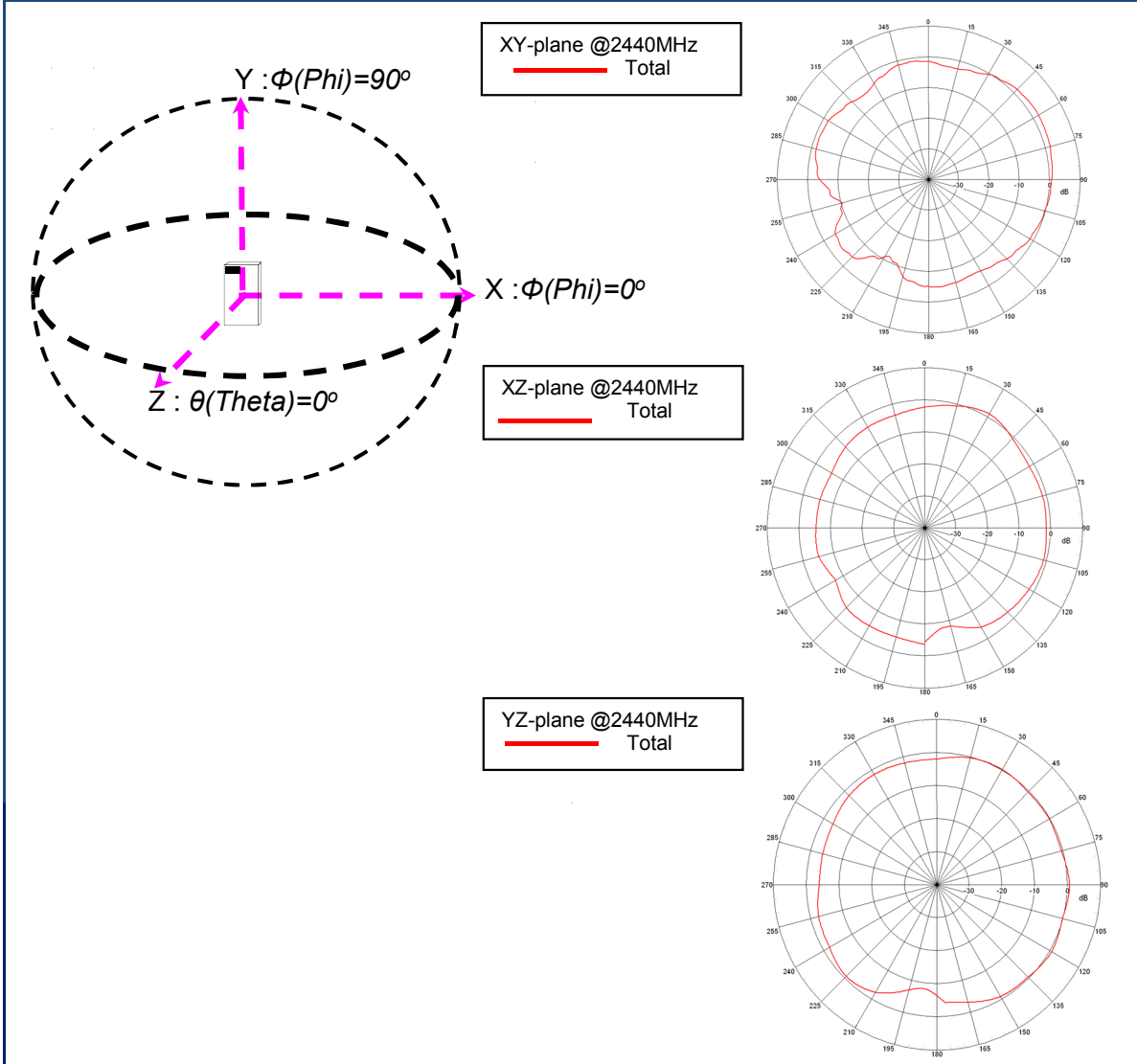
P/N 2450AD14A5500

Detail Specification: 11/6/2018

Page 4 of 6

This is the Web version of this datasheet, for the full datasheet, please contact us at: <https://www.johansontechnology.com/ask-a-question>

## Typical EM Radiation Performance @ 2.44GHz (T=25°C)



If you'd like the complete datasheet which includes detailed gain performance, layout guidelines, application notes, small WiFi application layout, send us as message at:

<https://www.johansontechnology.com/ask-a-question>

As a bonus, you'll be assigned an RF Engineer to assist you in the design for free!

Johanson Technology, Inc. reserves the right to make design changes without notice.

All sales are subject to Johanson Technology, Inc. terms and conditions.

802.11 Dual Band 2.45/5 GHz Mini Chip Antenna. WiFi, WLAN, IoT

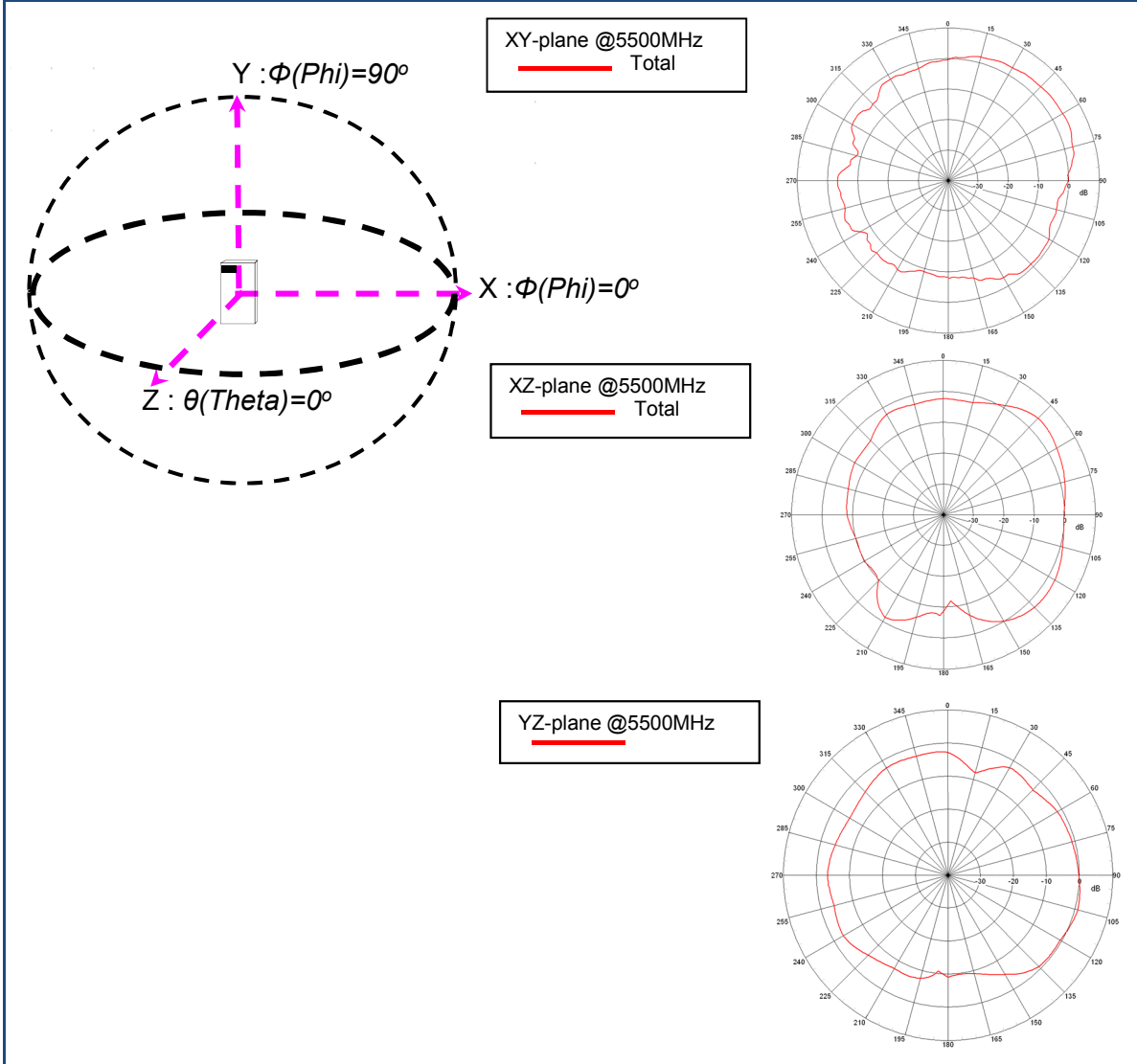
P/N 2450AD14A5500

Detail Specification: 11/6/2018

Page 5 of 6

This is the Web version of this datasheet, for the full datasheet, please contact us at: <https://www.johansontechnology.com/ask-a-question>

## Typical EM Radiation Performance @ 5.50 GHz (T=25°C)



If you'd like the complete datasheet which includes detailed gain performance, layout guidelines, application notes, small WiFi application layout, send us as message at:

<https://www.johansontechnology.com/ask-a-question>

As a bonus, you'll be assigned an RF Engineer to assist you in the design for free!

Johanson Technology, Inc. reserves the right to make design changes without notice.

All sales are subject to Johanson Technology, Inc. terms and conditions.

802.11 Dual Band 2.45/5 GHz Mini Chip Antenna. WiFi, WLAN, IoT

P/N 2450AD14A5500

Detail Specification: 11/6/2018

Page 6 of 6

This is the Web version of this datasheet, for the full datasheet, please contact us at: <https://www.johansontechnology.com/ask-a-question>

## Antenna tuning, optimization, and validation services:

<https://www.johansontechnology.com/ipc-antenna-services>

## For more antennas and to download measured S-parameters, go to:

<https://www.johansontechnology.com/antennas>

## For more information about our diplexers:

<https://www.johansontechnology.com/diplexers>

## Soldering Information

<https://www.johansontechnology.com/ipcsoldering-profile>

## MSL Info

<https://www.johansontechnology.com/msl-rating>

## Packaging information

<https://www.johansontechnology.com/tape-reel-packaging>

## For layout review contact our Applications Team at:

<https://www.johansontechnology.com/ask-a-question>

## RoHS Compliance

<https://www.johansontechnology.com/rohs-compliance>

Need help designing the antenna in? Use our antenna design services!

<https://www.johansontechnology.com/ipc-antenna-services>

2 Free layout reviews and if you need us to tune and characterize the antenna on your product (inside anechoic chamber) we can do that too. Small lab fee may apply for the latter.

If you'd like the complete datasheet which includes detailed gain performance, layout guidelines, application notes, small WiFi application layout, send us as message at:

<https://www.johansontechnology.com/ask-a-question>

As a bonus, you'll be assigned an RF Engineer to assist you in the design for free!

Johanson Technology, Inc. reserves the right to make design changes without notice.

All sales are subject to Johanson Technology, Inc. terms and conditions.



<https://www.johansontechnology.com>

4001 Calle Tecate • Camarillo, CA 93012 • TEL 805.389.1166 FAX 805.389.1821

Ver. 2.2

2018 Johanson Technology, Inc. All Rights Reserved

## Данный компонент на территории Российской Федерации

### Вы можете приобрести в компании MosChip.

Для оперативного оформления запроса Вам необходимо перейти по данной ссылке:

<http://moschip.ru/get-element>

Вы можете разместить у нас заказ для любого Вашего проекта, будь то серийное производство или разработка единичного прибора.

В нашем ассортименте представлены ведущие мировые производители активных и пассивных электронных компонентов.

Нашей специализацией является поставка электронной компонентной базы двойного назначения, продукции таких производителей как XILINX, Intel (ex.ALTERA), Vicor, Microchip, Texas Instruments, Analog Devices, Mini-Circuits, Amphenol, Glenair.

Сотрудничество с глобальными дистрибьюторами электронных компонентов, предоставляет возможность заказывать и получать с международных складов практически любой перечень компонентов в оптимальные для Вас сроки.

На всех этапах разработки и производства наши партнеры могут получить квалифицированную поддержку опытных инженеров.

Система менеджмента качества компании отвечает требованиям в соответствии с ГОСТ Р ИСО 9001, ГОСТ РВ 0015-002 и ЭС РД 009

### Офис по работе с юридическими лицами:

105318, г.Москва, ул.Щербаковская д.3, офис 1107, 1118, ДЦ «Щербаковский»

Телефон: +7 495 668-12-70 (многоканальный)

Факс: +7 495 668-12-70 (доб.304)

E-mail: [info@moschip.ru](mailto:info@moschip.ru)

Skype отдела продаж:

moschip.ru

moschip.ru\_4

moschip.ru\_6

moschip.ru\_9