

Features

- ◆ For industrial, office and residential environments
- ◆ Meets European ErP directive (green mode), <0.3 W no load power consumption
- ◆ High efficiency across full load range
- ◆ Compact plastic casing
- ◆ Reliable snap-on mounting on DIN-rails or with wall mounting bracket (not included)
- ◆ Universal input 85–264 VAC, 47–63 Hz
- ◆ Models with 5, 12, 24 & 48 VDC output
- ◆ Output voltage adjustable
- ◆ Power good signal
- ◆ Low ripple and noise
- ◆ Overload and short-circuit protection
- ◆ Optional module for parallel and redundant operation
- ◆ Worldwide safety approval package
- ◆ 3-year product warranty



The TRACOPOWER TPC series is a family of lightweight DIN-rail power supplies with an excellent price/performance ratio. They consume sparse standby power, and operate with high efficiency to comply with the requirements of the European Ecodesign directive. They have universal input of 85-264VAC or 90-375VDC and are designed for class I operation in industrial and residential environments. With the optional active current sharing redundancy module, these power supplies provide a very reliable true redundant DC supply. For further details see page 3.

Models

Order Code	Input Voltage Ranges	Output Power max.	Output Voltage nominal / adj. range	Output Current max.	
TPC 030-105	85 – 264 VAC Universal Input 47/63 Hz	20 W	5.0 VDC / 5.0–6.0 VDC	4.0 A	
TPC 030-112		26 W	12 VDC / 12–15 VDC	2.2 A	
TPC 030-124		30 W	24 VDC / 24–28.8 VDC	1.25 A	
TPC 030-148		30 W	48 VDC / 48–56 VDC	0.6 A	
TPC 055-112		90 – 375 VDC	42 W	12 VDC / 12–15 VDC	3.5 A
TPC 055-124			55 W	24 VDC / 24–28.8 VDC	2.3 A
TPC 055-148			55 W	48 VDC / 48–56 VDC	1.15 A
TPC 080-112			72 W	12 VDC / 12–15 VDC	6.0 A
TPC 080-124			80 W	24 VDC / 24–28.8 VDC	3.3 A
TPC 080-148			80 W	48 VDC / 48–56 VDC	1.7 A
TPC 120-112	96 W		12 VDC / 12–15 VDC	8.0 A	
TPC 120-124	120 W		24 VDC / 24–28.8 VDC	5.0 A	
TPC 120-148	120 W		48 VDC / 48–56 VDC	2.5 A	

Input Specifications

Input voltage range	<ul style="list-style-type: none"> - AC nominal rated - AC range (designed for) - DC nominal rated - DC range (designed for) 	110 – 240 VAC, 50-60 Hz 85 – 264 VAC, 47-63 Hz 130 – 300 VDC 90 – 375 VDC
Output derating	<ul style="list-style-type: none"> - at operation <100 VAC - at operation <130 VDC 	-2.5% /V -1.0% /VDC
Standby power consumption	TPC 030 and 055 models: TPC 080 and 120 models:	< 0.3 W < 0.5 W
Harmonic limits		EN 61000-3-2, Class A
Recommended circuit breaker, characteristic C		6.0 – 16.0 A

Output Specifications

Output voltage adjustable range (potentiometer on frontpanel)	5 VDC model: 12 VDC models: 24 VDC models: 48 VDC models:	5.0 – 6.0 VDC 12 – 15 VDC 24 – 28.8 VDC 48 – 56 VDC
Regulation	<ul style="list-style-type: none"> - Input variation - Load variation (0-100 %) 5 VDC models: other models:	0.5 % max. 0.75 % max. 0.5 % max.
Ripple and noise (20MHz bandwidth)		100 mVpk-pk max.
Short circuit protection		<200 % of lout nom.
Overvoltage protection (% of max. adjustable voltage)	5 VDC model: 12 VDC models: 24 VDC models: 48 VDC models:	<180 % <170 % <160 % <107 %
Power back immunity		125 % of nominal Vout
Start-up time		2 sec. max.
Hold-up time (115 VAC / 230 VAC)		min. 15 ms / min. 40 ms
Power OK signal	<ul style="list-style-type: none"> - trigger - PNP open collector max. current 48 VDC models: other models:	80 – 95 % 5 mA 10 mA

General Specifications

Temperature ranges	<ul style="list-style-type: none"> - Operating - Storage (non operating) 	-25°C to +70°C max. -25°C to +85°C
Temperature derating		2.5 %/K above 50°C
Humidity (non condensing)		95 % rel. H max.
Temperature coefficient		0.02 %/K
Remote On/Off	<ul style="list-style-type: none"> - application document 	10 mA curent source www.tracopower.com/overview/tpc
Efficiency (average at power consumption 25-100%)	TPC 030-105: other 30 Watt models: other models:	79 % 84 % 87 %
Reliability, calculated MTBF at +25°C (according to IEC-1709)	TPC 030 models: TPC 055 models: TPC 080 models: TPC 120 models:	>2.2 Mio h >1.7 Mio h >1.5 Mio h >1.3 Mio h
	<ul style="list-style-type: none"> - MTBF documents 	www.tracopower.com/overview/tpc
Altitude during operation		2'000m max. (6'500 ft) approved

General Specifications

Safety approvals	<ul style="list-style-type: none"> - CB test certificate - SIQ type approved - CSA certificate of compliance - UL certificate of compliance - SIQ type approved - certification documents 	IEC 60950-1:2005 2nd Ed, Am 1:2009 EN 60950-1 :2006 + Am 1 :2010 + Am 11 :2009 + Am 12:2011 UL 60950-1-2nd Ed CSA 60950-1-07-2nd Ed UL 508, CSA C22.2 No.107.1-01 EN 60204-1:2006 + A1:2009, EN 61558-2-8:2010, EN 61558-2-16:2009, EN 50178:1997 www.tracopower.com/overview/tpc
Environmental compliance	<ul style="list-style-type: none"> - Reach declaration document - RoHS 	www.tracopower.com/overview/tpc RoHS directive 2011/65/EU
EMC	<ul style="list-style-type: none"> - emissions - immunity - EMC test report documents 	IEC 61000-6-3 (residential environment) IEC 61000-6-2 (industrial environment) SEMI F47 www.tracopower.com/overview/tpc
Class of protection		class I (earth connection needed)
Case protection		IP 20 (IEC 60529)
Enclosure material		Makrolon 2405 (UL 94V-0 rated)
Mounting		DIN-rails as per EN 50022-35x15/7.5 (snap-on with self-locking spring) wall mounting bracket optional (not included)
Installation instructions	- installation document	www.tracopower.com/overview/tpc

TPC-REM240-24 Redundancy Module

Order Code	Nominal Input Voltage	Max Power per Input	Output Voltage adjustable	Output Current max.
TPC-REM240-24	24 VDC	120 W	24 – 27 VDC	10 A
TPC-REM240-48	48 VDC		48 – 55 VDC	5 A

These modules are external units for operation with two TPC power supplies with output voltage of 24 VDC or 48 VDC and of same type and power. The modules allow to connect two outputs of TPC power supplies together in order to achieve a reliable DC supply. In normal operation the module achieves equal current share for both power supplies connected. During the redundancy operation, if one of the power supplies fails, the output power will be provided in full by the remaining operating power supply. The redundancy of the DC system is monitored by a DC-OK signal.



Specifications

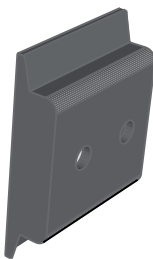
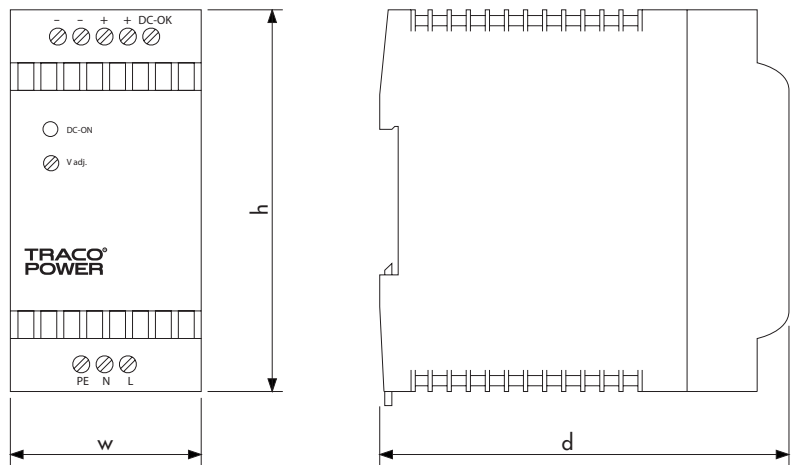
Operating temperature		-25°C to +50°C max.
Electromagnetic compatibility		in correspondence to connected units (no internal switching device)
Dimensions		same as model TPC 055 (see page 4)
Connection		screw terminal block
Installation instructions	- installation document	www.tracopower.com/overview/tpc

All specifications valid at nominal input voltage, full load and +25°C after warm-up time unless otherwise stated.

Case Dimensions

Model	Width (W)	Height	Depth d	Weight
TPC 030	26.5 (1.04)	90 (3.54)	96.5 (3.80)	160 g
TPC 055	45.0 (1.77)	90 (3.54)	96.5 (3.80)	260 g
TPC-REM 240-24	45.0 (1.77)	90 (3.54)	96.5 (3.80)	160 g
TPC 080	63.0 (2.48)	90 (3.54)	96.5 (3.80)	360 g
TPC 120	72.0 (2.83)	90 (3.54)	110.0 (4.33)	440 g

Dimensions in [mm], () = Inch
Tolerances: ±0.5 mm (±0.02)



Snap-on bracket for wall mounting (black plastic)

Wall Mounting Bracket (accessories not included)		
Order Code	For Models	Dimensions
TPC-WMK1	TPC 030-xx	26.0 x 35 x 7.5
TPC-WMK2	TPC 055-xx, TPC-REM 240-24	42.7 x 35 x 7.5
TPC-WMK3	TPC 080-xx	60.7 x 35 x 7.5
TPC-WMK4	TPC 120-xx	69.7 x 35 x 7.5

3D step files to download at: www.tracopower.com/overview/tpc -> documents

Данный компонент на территории Российской Федерации

Вы можете приобрести в компании MosChip.

Для оперативного оформления запроса Вам необходимо перейти по данной ссылке:

<http://moschip.ru/get-element>

Вы можете разместить у нас заказ для любого Вашего проекта, будь то серийное производство или разработка единичного прибора.

В нашем ассортименте представлены ведущие мировые производители активных и пассивных электронных компонентов.

Нашей специализацией является поставка электронной компонентной базы двойного назначения, продукции таких производителей как XILINX, Intel (ex.ALTERA), Vicor, Microchip, Texas Instruments, Analog Devices, Mini-Circuits, Amphenol, Glenair.

Сотрудничество с глобальными дистрибьюторами электронных компонентов, предоставляет возможность заказывать и получать с международных складов практически любой перечень компонентов в оптимальные для Вас сроки.

На всех этапах разработки и производства наши партнеры могут получить квалифицированную поддержку опытных инженеров.

Система менеджмента качества компании отвечает требованиям в соответствии с ГОСТ Р ИСО 9001, ГОСТ РВ 0015-002 и ЭС РД 009

Офис по работе с юридическими лицами:

105318, г.Москва, ул.Щербаковская д.3, офис 1107, 1118, ДЦ «Щербаковский»

Телефон: +7 495 668-12-70 (многоканальный)

Факс: +7 495 668-12-70 (доб.304)

E-mail: info@moschip.ru

Skype отдела продаж:

moschip.ru

moschip.ru_4

moschip.ru_6

moschip.ru_9