



**OBSOLETE PRODUCT**

Last time buy: 3 March 2014

Click here for more information.

**Features**

- No external I/O filtering required
- +10.8V to +13.6V input
- +5V (±50mV), 5 Amp output
- Synchronous-rectifier topology
- 300kHz switching frequency
- Low output noise, 60mVp-p
- Quick transient response, 30µsec
- High efficiency, 91%
- -40 to +70°C operation with no derating
- On/off control; Undervoltage shutdown
- Output trim capability (3.3V to 6V)
- 1" x 2" metal package; EMC compliant
- IEC950/EN60950/UL1950 pending
- Modifications and customs for OEM's

When your new tapping in 12V-to-5V Amps of current. T

lutely no external filtering to achieve specified performance.

The UNR-5/5-D12 achieves its high power density (25W/in<sup>3</sup>) through circuit topology and packaging. Its 91% efficient, fixed-frequency (300kHz), synchronous-rectifier design is packaged, with thermally conductive potting compound, in a heat-radiating, black metal case. It achieves low cost and high reliability through its use of proven, fully automated, SMT-on-pcb assembly techniques. Consequently, every 1 Amp of 12V current gives you 2.2 Amps of additional 5V current at an incremental cost.

The impressively efficient UNR-5/5-D12 delivers its full rated 25W output power over the -40 to +70°C ambient temperature range without heat sinking or forced-air cooling. Units derate to +100°C ambient. Devices are fully line (±0.25% max.) and load (±0.5% max.) regulated and feature user-optional remote on/off control and output-voltage trim capabilities (from 3.3 to 6 Volts).

If you need more 5V current and you've already rejected the use of inefficient, step-down, linear regulators, take a look at one of Murata Power Solutions' "switchers." Their high efficiency and ease of use may surprise you. Safety agency approvals and full EMI/EMC characterization tests are currently in progress.

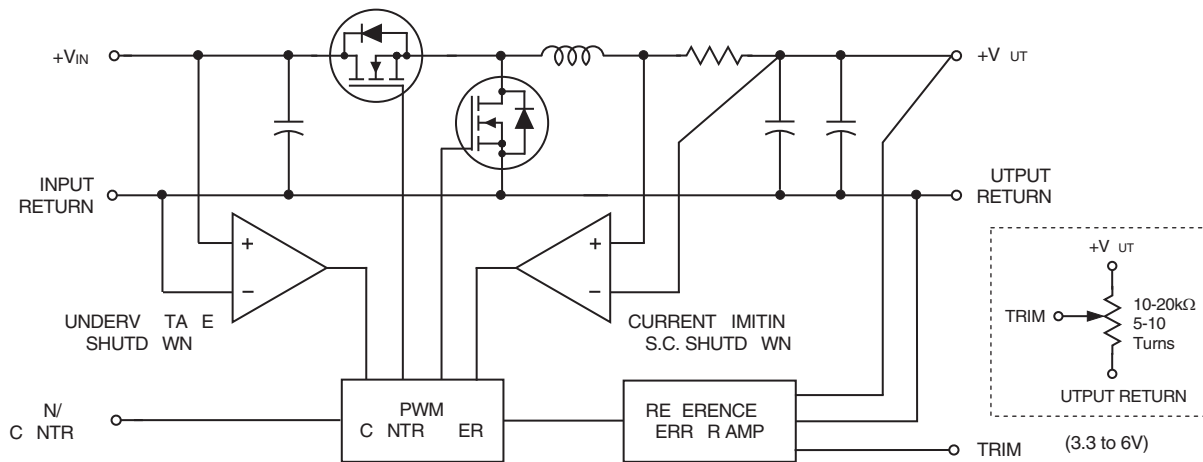


Figure 1. Simplified Schematic

Typical topology is shown.



Single Output, Non-Isolated, 12V-to-5V  
5 Amp, DC/DC Converters

**Performance/Functional Specifications**

Typical @ TA = +25°C under nominal line voltage and full-load conditions, with no external I/O filtering, unless noted. ①

Input	
Input Voltage Range	10.8-13.6 Volts (12V nominal)
Input Current ②	40/2290mA
Input Filter Type	Capacitive
Overshoot Protection	None
Reverse-Polarity Protection	None
Start-Up Threshold ③	10.2V typical, 10.4V maximum
Undervoltage Shutdown ③	9.6V typical, 8.2V minimum
On/Off Control (Pin 3) ④	TTL high (or open) = on, low = off
Output	
V <sub>OUT</sub> Accuracy (50% load)	±1% (±50mV) maximum
Temperature Coefficient	±0.02% per °C
Ripple/Noise (20MHz BW) ⑤	60mVp-p typical, 85mVp-p maximum
Line/Load Regulation	±0.25% maximum/±0.5% maximum
Efficiency	91% typical, 87% minimum
Current Limiting ⑥	Auto-recovery
Dynamic Characteristics	
Transient Response (50% load step)	30µsec to ±1% of final value
Switching Frequency	300kHz (±30kHz)
Environmental	
Operating Temperature (Ambient):	
Without Derating	-40 to +70°C
With Derating	to +100°C ( Straight line to 0 Watts)
Storage Temperature	-40 to +105°C
Physical	
Dimensions	2" x 1" x 0.48" (51 x 25 x 12.2mm)
Shielding	5-sided
Case Connection	Pin 2 (Input Return)
Case Material	Corrosion resistant steel with non-conductive, epoxy-based, black enamel finish and plastic baseplate
Pin Material	RoHS: Gold plate over copper alloy Non-RoHS: Pure tin over copper alloy
Weight	1.6 ounces (45.4 grams)
Flammability	UL 94V-0

**Absolute Maximum Ratings**

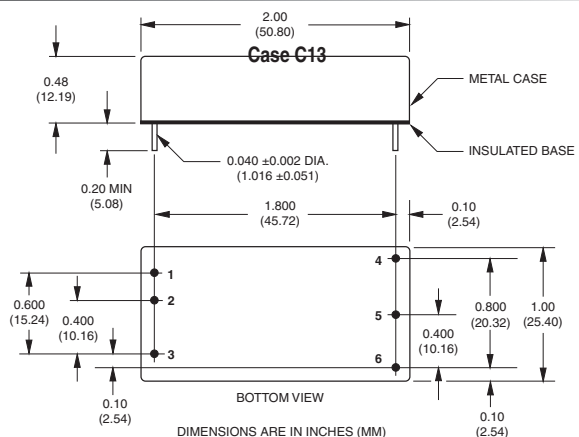
Input Voltage	15 Volts
Output Current	Current limited. Devices can withstand a sustained output short circuit without damage.
Storage Temperature	-40 to +105°C
Lead Temperature (soldering, 10 sec.)	+300°C

These are stress ratings. Exposure of devices to any of these conditions may adversely affect long-term reliability. Proper operation under conditions other than those listed in the Performance/Functional Specifications Table is not implied.

**On/Off Control Functionality**

The On/Off Control pin has an internal 10kΩ pull-up resistor to +V<sub>IN</sub>. It can be driven with any logic circuit capable of meeting the following drive requirements. Logic "0" = 0 to +0.8V. Logic "1" = +2.0V to +V<sub>IN</sub>. I<sub>IH</sub> (@ V<sub>IN</sub> = +2.0V) = -1.2mA. I<sub>IL</sub> (@ V<sub>IN</sub> = 0V) = -1.4mA. Open collector logic or a single NPN drive transistor can be used. The drive circuit should be rated for more than 13.6V. Applying a voltage to pin 3 when no input power is applied to the converter can cause permanent damage to the converter.

**MECHANICAL SPECIFICATIONS**



I/O Connections	
Pin	Function P21
1	+Input
2	Input Return
3	On/Off Control
4	+Output
5	Output Return
6	Trim

**Note:**

The case is connected to pin 2 (Input Return).

UNR-5/5-D12 Non-Isolated, 12V-to-5V, 25 Watt, DC/DC Converter  
UNR-5/5-D12-C RoHS version



This product is subject to the following [operating requirements](#) and the [Life and Safety Critical Application Sales Policy](#):  
Refer to: <http://www.murata-ps.com/requirements/>

Murata Power Solutions, Inc. makes no representation that the use of its products in the circuits described herein, or the use of other technical information contained herein, will not infringe upon existing or future patent rights. The descriptions contained herein do not imply the granting of licenses to make, use, or sell equipment constructed in accordance therewith. Specifications are subject to change without notice. © 2013 Murata Power Solutions, Inc.

## Данный компонент на территории Российской Федерации

### Вы можете приобрести в компании MosChip.

Для оперативного оформления запроса Вам необходимо перейти по данной ссылке:

<http://moschip.ru/get-element>

Вы можете разместить у нас заказ для любого Вашего проекта, будь то серийное производство или разработка единичного прибора.

В нашем ассортименте представлены ведущие мировые производители активных и пассивных электронных компонентов.

Нашей специализацией является поставка электронной компонентной базы двойного назначения, продукции таких производителей как XILINX, Intel (ex.ALTERA), Vicor, Microchip, Texas Instruments, Analog Devices, Mini-Circuits, Amphenol, Glenair.

Сотрудничество с глобальными дистрибьюторами электронных компонентов, предоставляет возможность заказывать и получать с международных складов практически любой перечень компонентов в оптимальные для Вас сроки.

На всех этапах разработки и производства наши партнеры могут получить квалифицированную поддержку опытных инженеров.

Система менеджмента качества компании отвечает требованиям в соответствии с ГОСТ Р ИСО 9001, ГОСТ РВ 0015-002 и ЭС РД 009

### Офис по работе с юридическими лицами:

105318, г.Москва, ул.Щербаковская д.3, офис 1107, 1118, ДЦ «Щербаковский»

Телефон: +7 495 668-12-70 (многоканальный)

Факс: +7 495 668-12-70 (доб.304)

E-mail: [info@moschip.ru](mailto:info@moschip.ru)

Skype отдела продаж:

moschip.ru

moschip.ru\_4

moschip.ru\_6

moschip.ru\_9