

# SP series

Washable snap-action pushbutton switches



## DISTINCTIVE FEATURES

Process sealed

Front and rear sealing

Process compatible (plain bushing models)

Wave solderable

Washable



## ELECTRICAL SPECIFICATIONS

- Max. current/voltage rating with resistive load :
  - gold plated brass contacts : 100 mA 30 VDC
  - silver or gold plated silver contacts : 1 A 30 VDC
- Initial contact resistance : 50 mΩ max.
- Insulation resistance : 1,000 MΩ min.
- Dielectric strength : 1,000 Vrms 50 Hz min.
- Electrical life : 60,000 cycles



## ENVIRONMENTAL SPECIFICATIONS

- Operating temperature : -20 °C to +85 °C (-4 °F to +185 °F)
- Storage temperature : -40 °C to +85 °C (-40 °F to +185 °F)
- Moisture : The insulating materials employed and the complete seal permit the switches to withstand a 56 days moisture test (IEC 68-2-3).
- Solderability : The switches are tested at 235°C according to IEC 68-2-20 after accelerated aging.



## GENERAL SPECIFICATIONS

- Torque : 0.25 Nm (.18 Ft.lb) applied to nut (threaded bushing)
- Total travel : 0.50 mm (.019)
- Mechanical strength : Terminals are strengthened by a bracket or a ground plate ensuring the rigidity of the switch on the board. Actuator strength is 10 N max.
- Soldering - thermal shock (plain bushing models only) :  
The switches are especially designed for flow soldering at 260 °C (500 °F) during 5 seconds owing to high temperature polymer parts.
- Iron soldering (threaded bushing models) : 300 °C (572 °F) max., 5 seconds max.

The company reserves the right to change specifications without notice.



# SP series

Washable snap-action pushbutton switches



## MATERIALS

- Case and cover : UL94-V0, polyamide, glass filled or PES
- Actuator : polyamide, glass filled
- Contacts
  - 0 : brass, gold plated
  - 1 : silver
  - 2 : silver, gold plated
- Terminal seal : epoxy

APEM products may be recycled at end-of-life for the re-claiming of valuable metal components.

## AGENCY APPROVAL



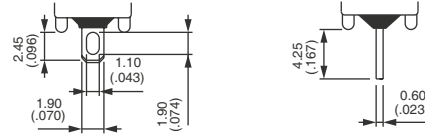
1 A 120 VAC

**Availability** : all models with silver or gold plated silver contacts.

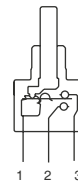
**Marking** : to order switches marked UL , complete appropriate box of ordering format.



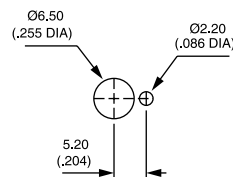
## TERMINALS



## ELECTRICAL FUNCTIONS

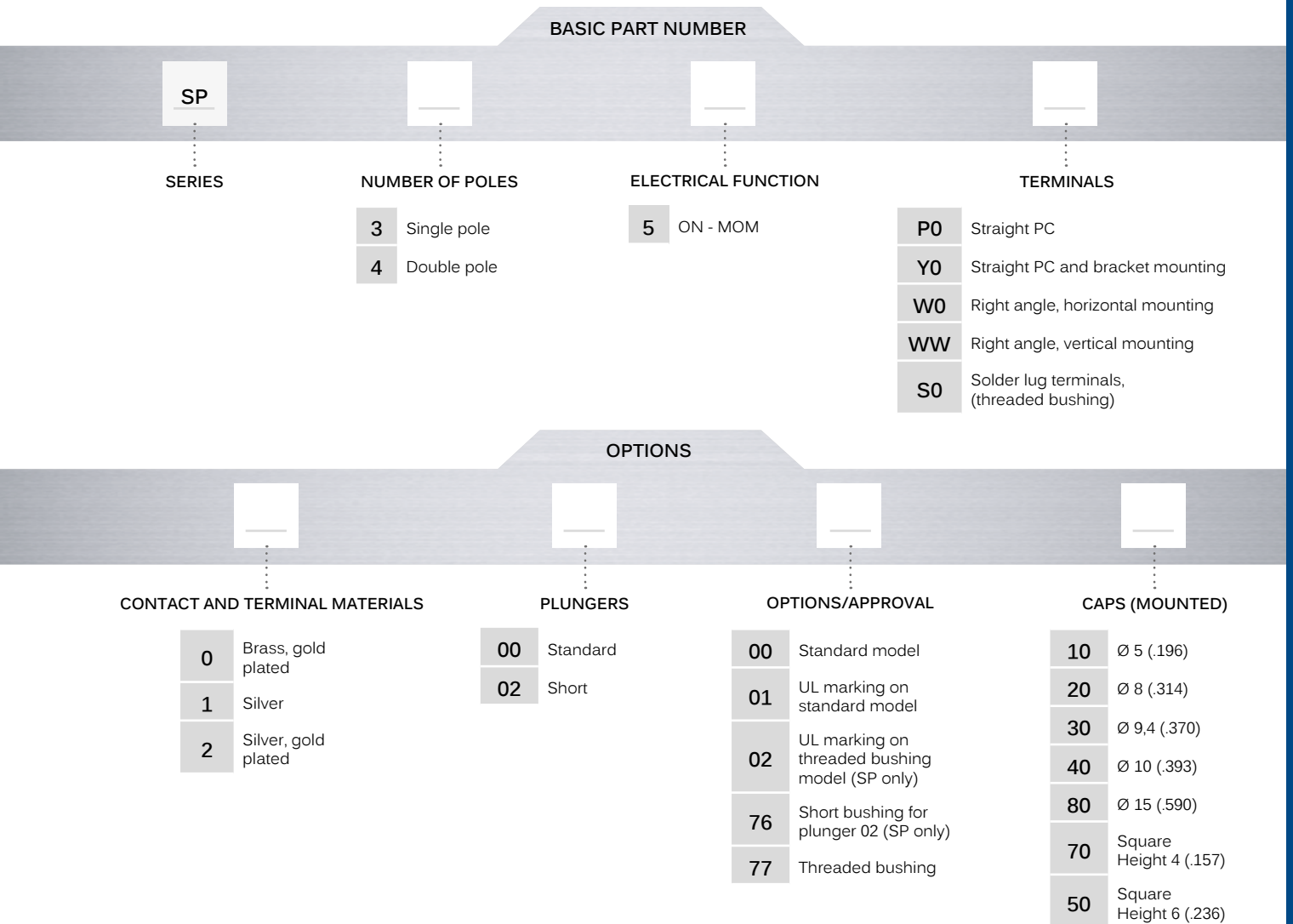


## PANEL CUT-OUT





### BUILD YOUR PART NUMBER



### ABOUT THIS SERIES

On the following pages, you will find successively basic part numbers of switches and options in the same order as in above chart.



**Notice** : please note that not all combinations of above numbers are available. Refer to the following pages for further information.



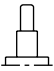
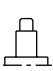
**Mounting accessories** : Standard hardware supplied with all models with Ø 6.35 (1/4) threaded bushing : 2 hex nuts 8 mm (.314) across flats, 1 locking ring and 1 lockwasher. Standard and special hardware available is presented in the "Accessories" section of website.

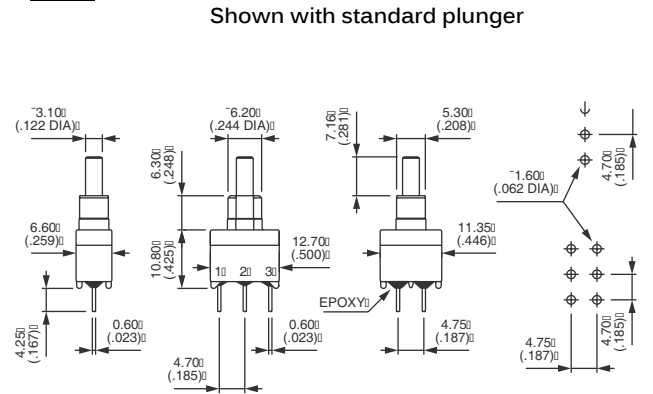
# SP series

Washable snap-action pushbutton switches

## PLAIN BUSHING - STRAIGHT PC TERMINALS

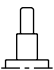
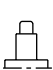


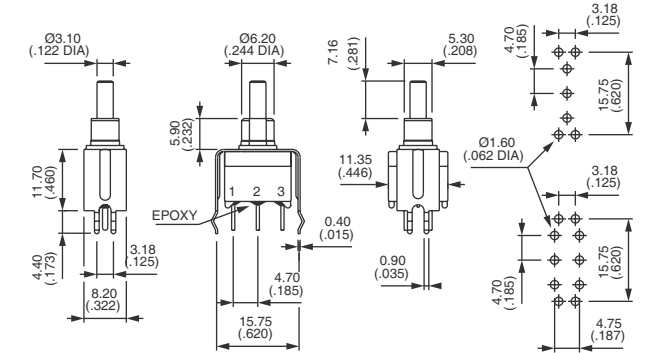
		
Single pole	1-3	1-2
<b>SP35P0... 00</b>	ON	MOM
Double pole		
<b>SP45P0... 00</b>	ON	MOM



## PLAIN BUSHING - BRACKET MOUNTING

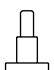



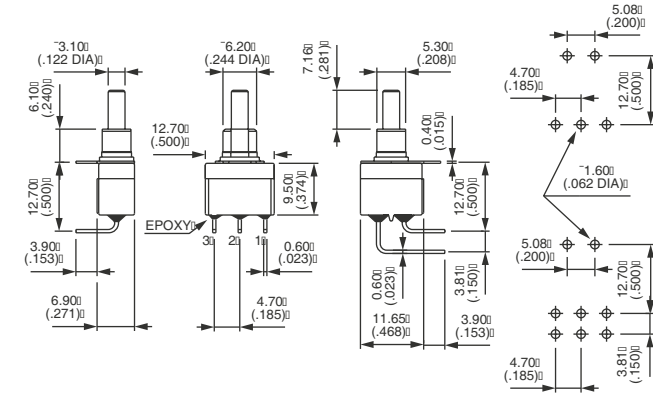
		
Single pole	1-3	1-2
<b>SP35Y0... 00</b>	ON	MOM
Double pole		
<b>SP45Y0... 00</b>	ON	MOM



## PLAIN BUSHING - RIGHT ANGLE TERMINALS HORIZONTAL

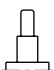



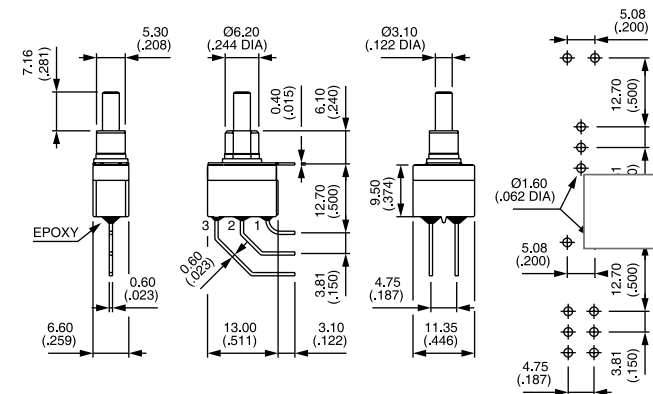
		
Single pole	1-3	1-2
<b>SP35W0... 00</b>	ON	MOM
Double pole		
<b>SP45W0... 00</b>	ON	MOM



## PLAIN BUSHING - RIGHT ANGLE TERMINALS VERTICAL



		
Single pole	1-3	1-2
<b>SP35WW... 00</b>	ON	MOM
Double pole		
<b>SP45WW... 00</b>	ON	MOM



Washable snap-action pushbutton switches

## THREADED BUSHING - SOLDER LUG TERMINALS



Single pole  
SP35S0... 77



1-3



1-2

ON

MOM

## THREADED BUSHING - STRAIGHT PC TERMINALS



Single pole  
SP35P0... 77



1-3

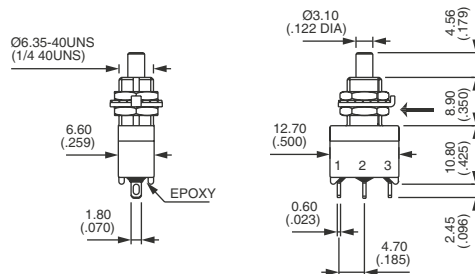


1-2

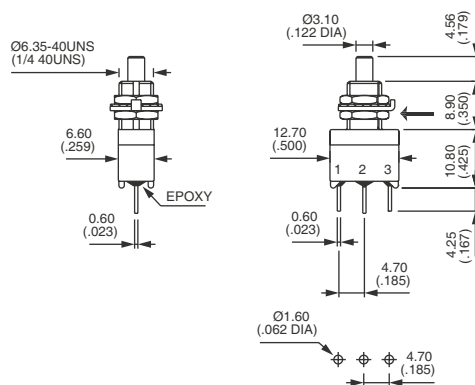
ON

MOM

Shown with standard plunger  
→ KEYWAY



→ KEYWAY



### CONTACT & TERMINAL MATERIALS

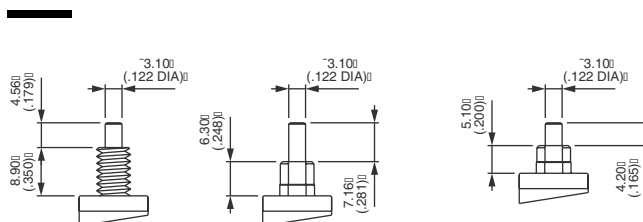
BASIC P/N

- 0 Brass, gold plated (standard)
- 1 Silver
- 2 Silver, gold plated

### PLUNGERS

BASIC P/N

- 00 Standard plunger
- 02 Short (for models with plain bushing, single pole only) Order with option 76 below.



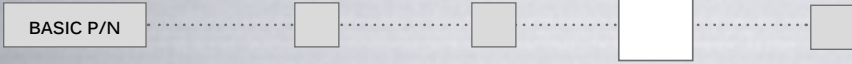
00

02

# SP series

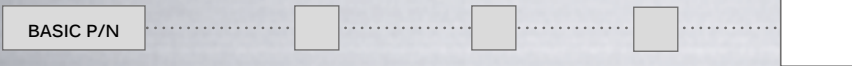
Washable snap-action pushbutton switches

### OPTIONS / AGENCY APPROVAL



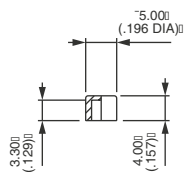
- 00 Standard model
- 01 UL marking for standard model
- 02 UL marking for threaded bushing model (single pole models only)
- 76 Short plain bushing for 02 plunger (single pole models only)
- 77 Threaded bushing (included in basic part numbers on previous page)

### CAPS

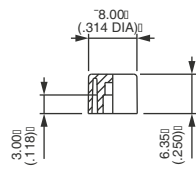


- |  |   |
|--|---|
| <b>Blank</b> Without cap                             | For cap colors, replace «0» with number : |
| 10 P/N U2400   | 1 Blue                                    |
| 20 P/N U2510   | 1/4 Dark blue                             |
| 30 P/N U2130   | 2 Black                                   |
| 40 Standard - P/N U2900                              | 3 Green                                   |
| 50 Square - P/N U2340. Not available with plunger 02 | 4 Grey                                    |
| 70 Square - P/N U910                                 | 5 Yellow                                  |
| 80 P/N U3400. Not available with plunger 02          | 6 Red                                     |
|  | 7 Ivory                                   |
|  | 7/1 White                                 |
|  | 9 Orange                                  |

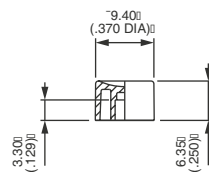
To order caps separately, use their P/N (U...) (for threaded bushing order only separately).



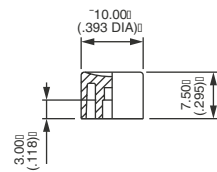
10



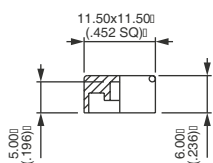
20



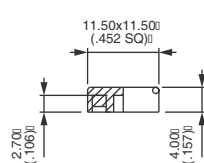
30



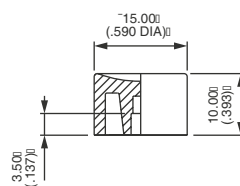
40



50



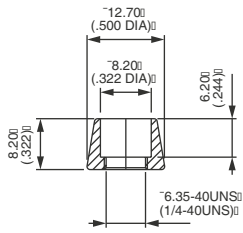
70



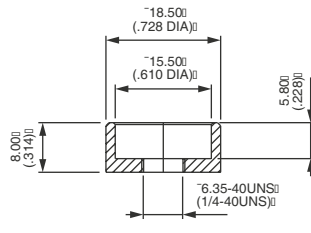
80

### DRESS NUT

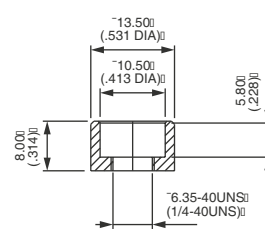
**For threaded bushing models only**  
 Dress nuts are to be ordered separately.



**U1636**  
 For cap U2510



**U825**  
 For cap U3400



**U840**  
 For cap U2900

## Данный компонент на территории Российской Федерации

### Вы можете приобрести в компании MosChip.

Для оперативного оформления запроса Вам необходимо перейти по данной ссылке:

<http://moschip.ru/get-element>

Вы можете разместить у нас заказ для любого Вашего проекта, будь то серийное производство или разработка единичного прибора.

В нашем ассортименте представлены ведущие мировые производители активных и пассивных электронных компонентов.

Нашей специализацией является поставка электронной компонентной базы двойного назначения, продукции таких производителей как XILINX, Intel (ex.ALTERA), Vicor, Microchip, Texas Instruments, Analog Devices, Mini-Circuits, Amphenol, Glenair.

Сотрудничество с глобальными дистрибьюторами электронных компонентов, предоставляет возможность заказывать и получать с международных складов практически любой перечень компонентов в оптимальные для Вас сроки.

На всех этапах разработки и производства наши партнеры могут получить квалифицированную поддержку опытных инженеров.

Система менеджмента качества компании отвечает требованиям в соответствии с ГОСТ Р ИСО 9001, ГОСТ РВ 0015-002 и ЭС РД 009

### Офис по работе с юридическими лицами:

105318, г.Москва, ул.Щербаковская д.3, офис 1107, 1118, ДЦ «Щербаковский»

Телефон: +7 495 668-12-70 (многоканальный)

Факс: +7 495 668-12-70 (доб.304)

E-mail: [info@moschip.ru](mailto:info@moschip.ru)

Skype отдела продаж:

moschip.ru

moschip.ru\_4

moschip.ru\_6

moschip.ru\_9