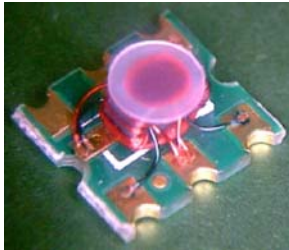


Features

- Surface Mount
- Typical Coupling +17dB
- 260°C Reflow Compatible
- RoHS* Compliant, lead free
- Available on Tape and Reel
- All wires are welded to the substrate

Description

M/A-COM Technology Solutions MACP-009943-CH07F0 is a 17dB broadband Coupler in a low cost, surface mount package. It offers low loss, good Isolation, good input/output matching and exceptional coupling repeatability. Ideally suited for high volume CATV/Broadband applications.



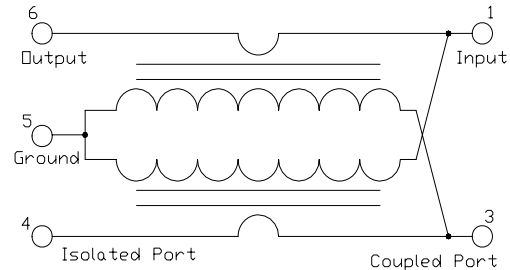
Pin Configuration

Pin No.	Function
1	Input
2	Not Used (short to ground)
3	Coupled
4	Isolated (external 75 Ohms termination)
5	Ground
6	Output

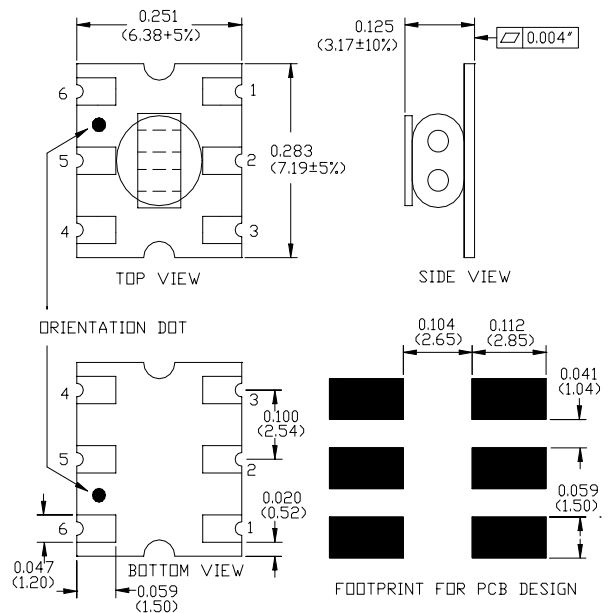
Note: Reference Application Note **M513** for reel size information.

* Restrictions on Hazardous Substances, European Union Directive 2002/95/EC.

Schematic



Case Style: SM-55A



Dimensions in inches [mm] Tolerance: .xx ± .02, .xxx ± .010, unless otherwise stated

Ordering Information

Part number	Description
MACP-009943-CH07F0	900 piece reel
MABA-009943-CH07TB	Customer Test Board

ADVANCED: Data Sheets contain information regarding a product M/A-COM Technology Solutions is considering for development. Performance is based on target specifications, simulated results, and/or prototype measurements. Commitment to develop is not guaranteed.

PRELIMINARY: Data Sheets contain information regarding a product M/A-COM Technology Solutions has under development. Performance is based on engineering tests. Specifications are typical. Mechanical outline has been fixed. Engineering samples and/or test data may be available. Commitment to produce in volume is not guaranteed.

• **North America** Tel: 800.366.2266 • **Europe** Tel: +353.21.244.6400
 • **India** Tel: +91.80.43537383 • **China** Tel: +86.21.2407.1588
 Visit www.macomtech.com for additional data sheets and product information.

M/A-COM Technology Solutions Inc. and its affiliates reserve the right to make changes to the product(s) or information contained herein without notice.

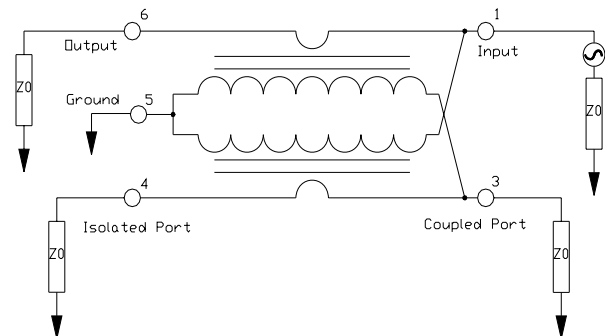
Electrical Specifications: $T_A = 25^\circ\text{C}$, 0dBm , $Z_0 = 75\Omega$, $P_{in} = 0\text{dBm}$

Parameter	Test Conditions	Units	Min	Typ	Max
Coupling	5 - 860 MHz	dB	-	17.2	± 0.7
	860 - 1000 MHz	dB	-	17.0	± 0.8
Main Line Loss	5 - 860 MHz	dB	-	0.6	1.0
	860 - 1000 MHz	dB	-	0.8	1.2
Coupling Flatness	5 - 1000 MHz	dB	-	-	1.0
Directivity	5 - 50 MHz	dB	30	40	-
	50 - 500 MHz	dB	12	20	-
	500 - 1000 MHz	dB	5	12	-
Input Return Loss	5 - 50 MHz	dB	24	28	-
	50 - 500 MHz	dB	24	28	-
	500 - 1000 MHz	dB	20	25	-
Output Return Loss	5 - 50 MHz	dB	20	25	-
	50 - 500 MHz	dB	20	25	-
	500 - 1000 MHz	dB	20	23	-
Coupling Return Loss	5 - 50 MHz	dB	20	25	-
	50 - 500 MHz	dB	20	25	-
	500 - 1000 MHz	dB	18	23	-

Recommended Maximum Ratings

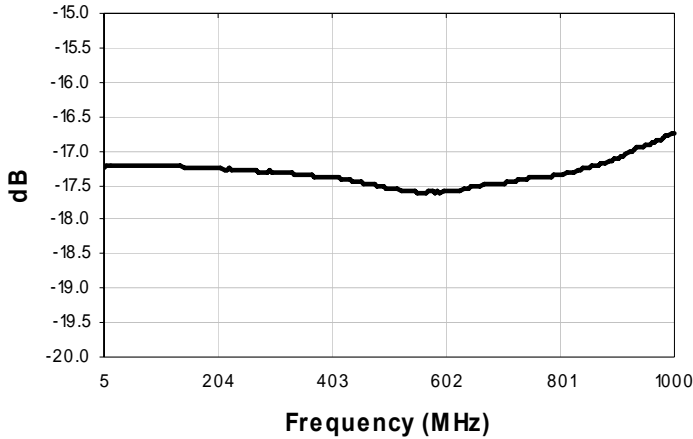
Parameter	Value
Max Input Power	250mW
DC current	30mA
Operating Temperature	-40°C to $+85^\circ\text{C}$
Storage Temperature	-55°C to $+100^\circ\text{C}$

Application Circuit

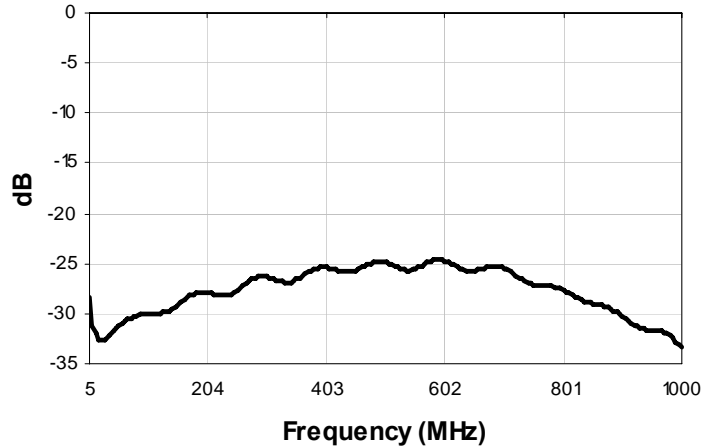


Typical Performance Curves: $T_A = 25^\circ\text{C}$, 0dBm , $Z_0 = 75\Omega$, $P_{in} = 0\text{dBm}$

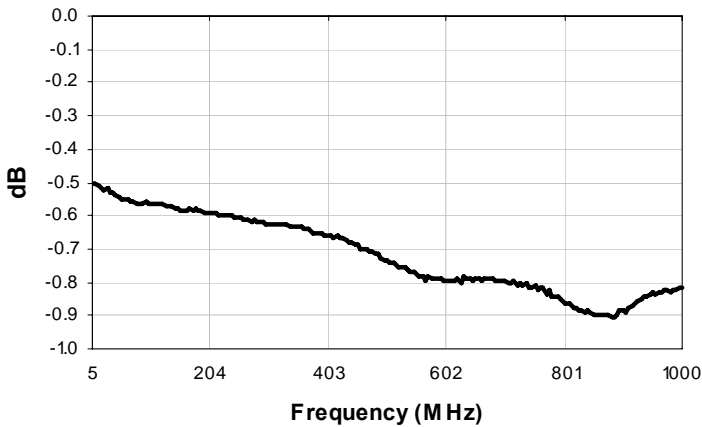
Coupling (Pin1 - Pin3)



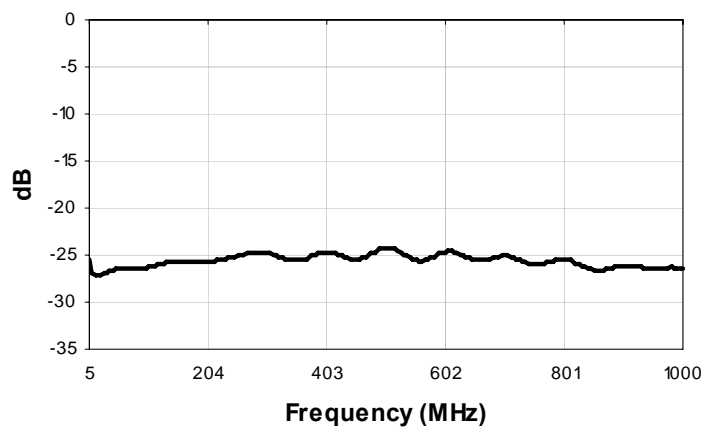
Return Loss: Input (Pin 1)



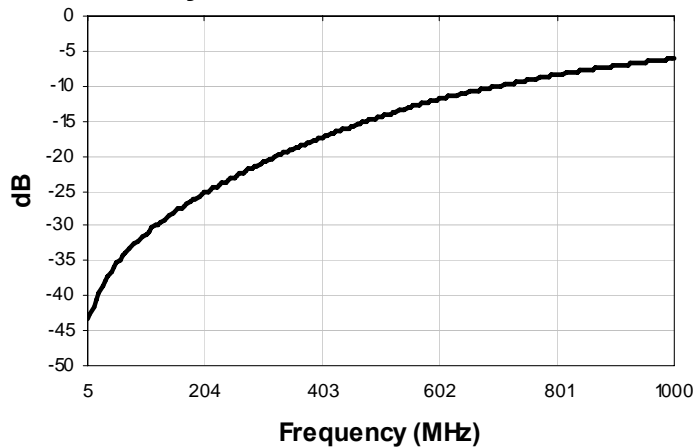
Main Line Loss (Pin1 - Pin6)



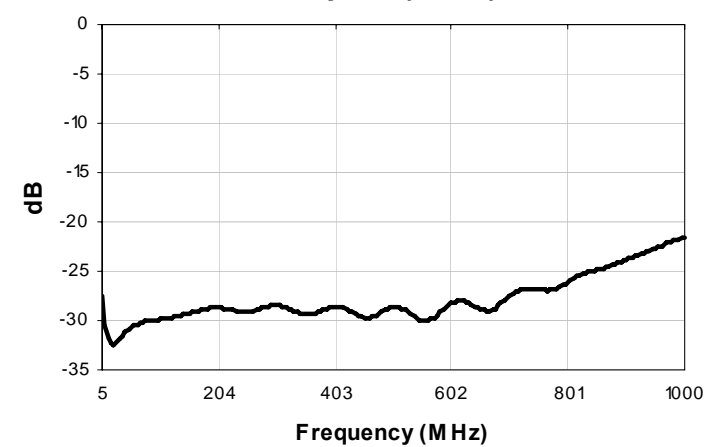
Return Loss: Output (Pin 6)



Directivity



Return Loss: Coupled (Pin 3)



3

ADVANCED: Data Sheets contain information regarding a product M/A-COM Technology Solutions is considering for development. Performance is based on target specifications, simulated results, and/or prototype measurements. Commitment to develop is not guaranteed.
PRELIMINARY: Data Sheets contain information regarding a product M/A-COM Technology Solutions has under development. Performance is based on engineering tests. Specifications are typical. Mechanical outline has been fixed. Engineering samples and/or test data may be available. Commitment to produce in volume is not guaranteed.

• **North America** Tel: 800.366.2266 • **Europe** Tel: +353.21.244.6400
• **India** Tel: +91.80.43537383 • **China** Tel: +86.21.2407.1588
Visit www.macomtech.com for additional data sheets and product information.

M/A-COM Technology Solutions Inc. and its affiliates reserve the right to make changes to the product(s) or information contained herein without notice.

Данный компонент на территории Российской Федерации

Вы можете приобрести в компании MosChip.

Для оперативного оформления запроса Вам необходимо перейти по данной ссылке:

<http://moschip.ru/get-element>

Вы можете разместить у нас заказ для любого Вашего проекта, будь то серийное производство или разработка единичного прибора.

В нашем ассортименте представлены ведущие мировые производители активных и пассивных электронных компонентов.

Нашей специализацией является поставка электронной компонентной базы двойного назначения, продукции таких производителей как XILINX, Intel (ex.ALTERA), Vicor, Microchip, Texas Instruments, Analog Devices, Mini-Circuits, Amphenol, Glenair.

Сотрудничество с глобальными дистрибьюторами электронных компонентов, предоставляет возможность заказывать и получать с международных складов практически любой перечень компонентов в оптимальные для Вас сроки.

На всех этапах разработки и производства наши партнеры могут получить квалифицированную поддержку опытных инженеров.

Система менеджмента качества компании отвечает требованиям в соответствии с ГОСТ Р ИСО 9001, ГОСТ РВ 0015-002 и ЭС РД 009

Офис по работе с юридическими лицами:

105318, г.Москва, ул.Щербаковская д.3, офис 1107, 1118, ДЦ «Щербаковский»

Телефон: +7 495 668-12-70 (многоканальный)

Факс: +7 495 668-12-70 (доб.304)

E-mail: info@moschip.ru

Skype отдела продаж:

moschip.ru

moschip.ru_4

moschip.ru_6

moschip.ru_9