

FIGURE 1

© 1967 by AMP Incorporated. All international rights reserved. AMP products covered by U. S. and foreign patents and/or patents pending.

1. These instructions cover the A-MP 160 Position Series "M" Connector (see Figure 1) and its Accessories. Assembly instructions for Accessories are packaged with the items. Read these instructions and those packaged with the Accessories before assembling Connectors.

2. CONTACT SELECTION

- (a) Size 16 Type II, III and III Plus Pin and Socket Contacts may be used in either Block of this Connector. Select and crimp these Contacts for use in an M-DM (Deep Male Block) combination according to AMP Instruction Sheet No. 1379.
- (b) Subminiature COAXICON* Pin and Socket Contacts may be used in either Block of this Connector. Select and crimp these Contacts according to AMP Instruction Sheet No. 7318.

3. ENGAGEMENT ACCESSORIES

The following Accessories may be used to help engage a pair of Connector Blocks.

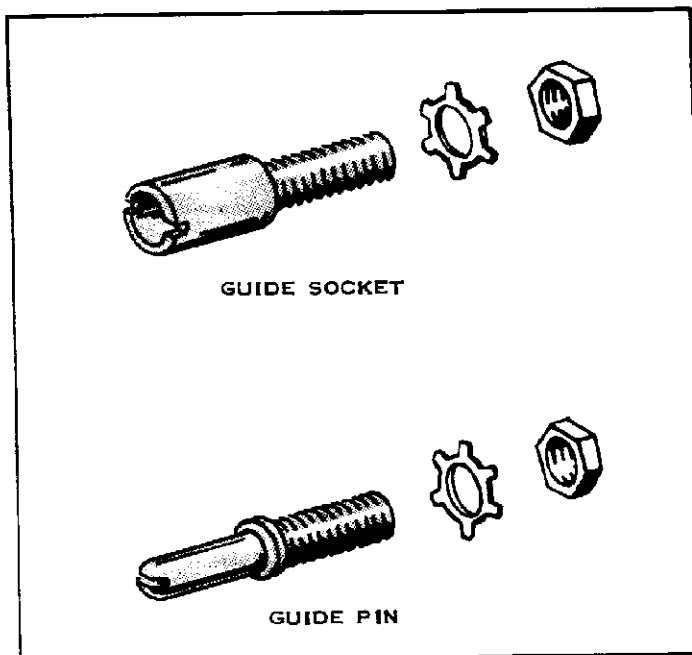
- (a) GUIDE PINS AND SOCKETS are used to align Connector Blocks during engagement, to polarize Connector Blocks and to attach other Accessories to Connectors. They may be used in both Blocks. See Figure 2.

- (b) KEYING PLUGS, when inserted into Contact Cavities in a Connector Block, key this block to mate only with another Block in which the opposite Cavities have been left vacant. See Figure 3.

4. PROTECTIVE ACCESSORIES

Each of the following Accessories protects the Connector Blocks, the Contacts or the Wire.

- (a) STRAIN RELIEF CLAMPS relieve strain on Contacts caused by free-hanging Wires. These clamps may be used for both straight and right angle Cable routing. See Figure 4. The Clamps may be used only on Female Blocks (Part No. 202800) and should be attached to Blocks using either guide pins and sockets or two 6-32 x 3/8" machine screws, nuts and lock-washers.
- (b) SHIELDS protect the Wires where they protrude from the rear of the Connector Block and relieve strain on the Contacts caused by free-hanging Wires. A 45° two-piece Shield for use with Male Blocks (Part No. 202799) is available. See Figure 5. These Shields should be attached to Blocks using either guide pins and sockets or four 6-32 x 3/8" machine screws.



GUIDE PINS	GUIDE SOCKETS	INSTRUCTION SHEET NO.
201046-□	201047-□	IS 7056
201397-□†	201401-□†	

† THESE ASSEMBLIES CONTAIN A LOCK NUT IN PLACE OF A NUT AND LOCKWASHER.

FIGURE 2

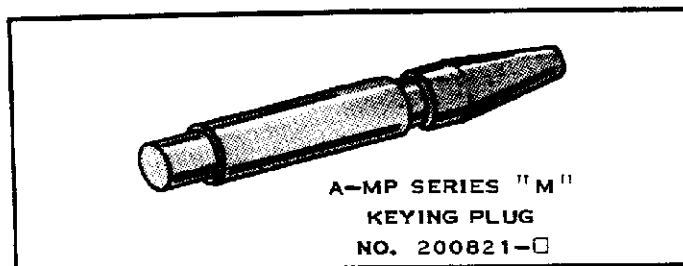


FIGURE 3

(c) BUSHINGS may be used with the 45° Shield. The Bushings protect the Wires where they protrude from the rear of the Shield and they allow small diameter Wires to fit snugly into the Clamp portion of the Shield. See Figure 6.

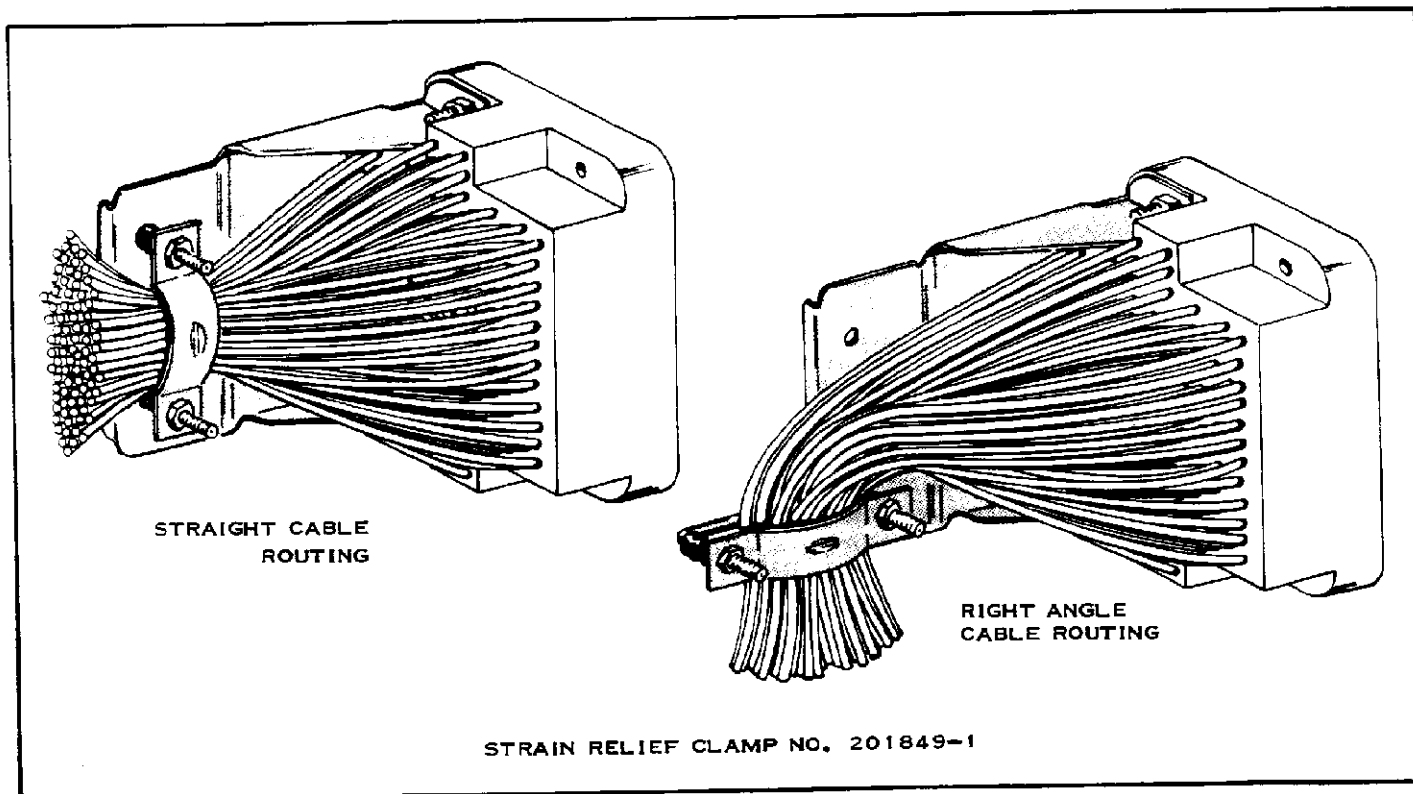
5. CONNECTOR ASSEMBLY

The following steps show the proper sequence for attaching the Accessories to the Connector Blocks.

(a) If Bushings are used, slide them over Wires (preferably before crimping the Contacts onto the Wires), with Flange toward Connector Block.

(b) Push Crimped Contacts all the way into Connector Block. Pull back lightly on Wires to make sure Contacts are properly inserted.

NOTE: When inserting Contacts which are crimped to small flexible Wire, use A-MP Insertion Tool No. 91002-



STRAIN RELIEF CLAMP NO. 201849-1

FIGURE 4

- (c) Attach Strain Relief Clamp to Female Block and Shield to Male Block using machine screws or guide pins and sockets.
- (d) Mate the Connector Blocks by tightening the Jackscrew.

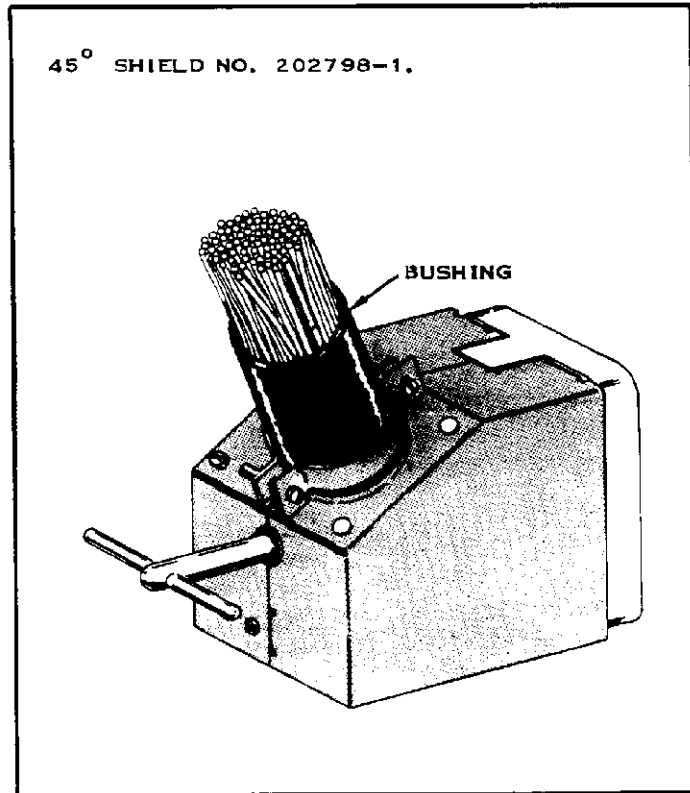


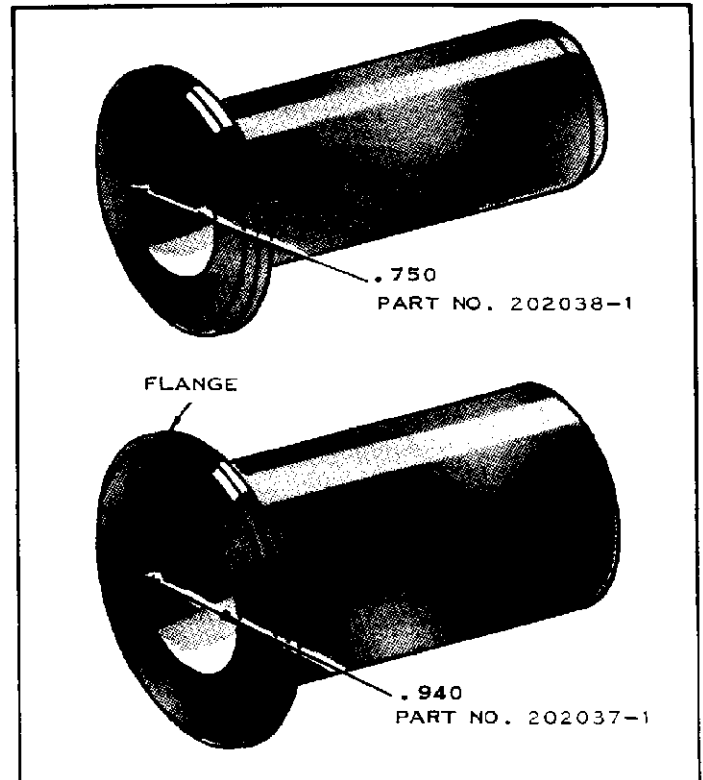
FIGURE 5

6. PANEL MOUNTING

- (a) Make a cutout in the Panel using the dimensions in Figure 7.
- (b) Mount Block to Panel using #4-40 machine screws or guide pins and sockets. A panel mounted Connector Block is shown in Figure 8.

7. CONTACT EXTRACTION

To remove Contacts from Connector Block, use A-MP Extraction Tool No. 305183.



DIAMETER OF WIRE BUNDLE		BUSHING USED
SHEATHED CABLE	LOOSE WIRES	
MORE THAN .940	MORE THAN .940	NONE
.940-.750	.940-.750	202037-1
.750-.425	.750-.490	BOTH

FIGURE 6

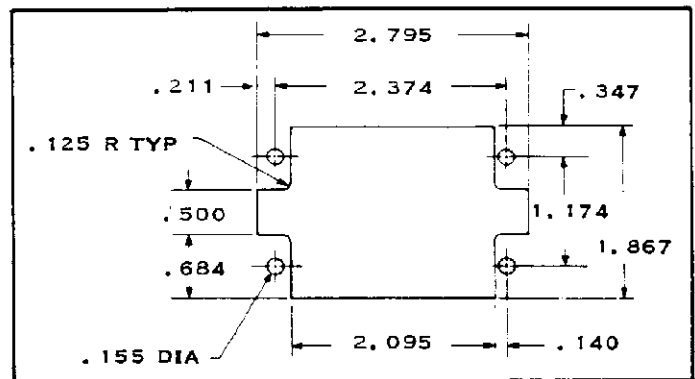


FIGURE 7

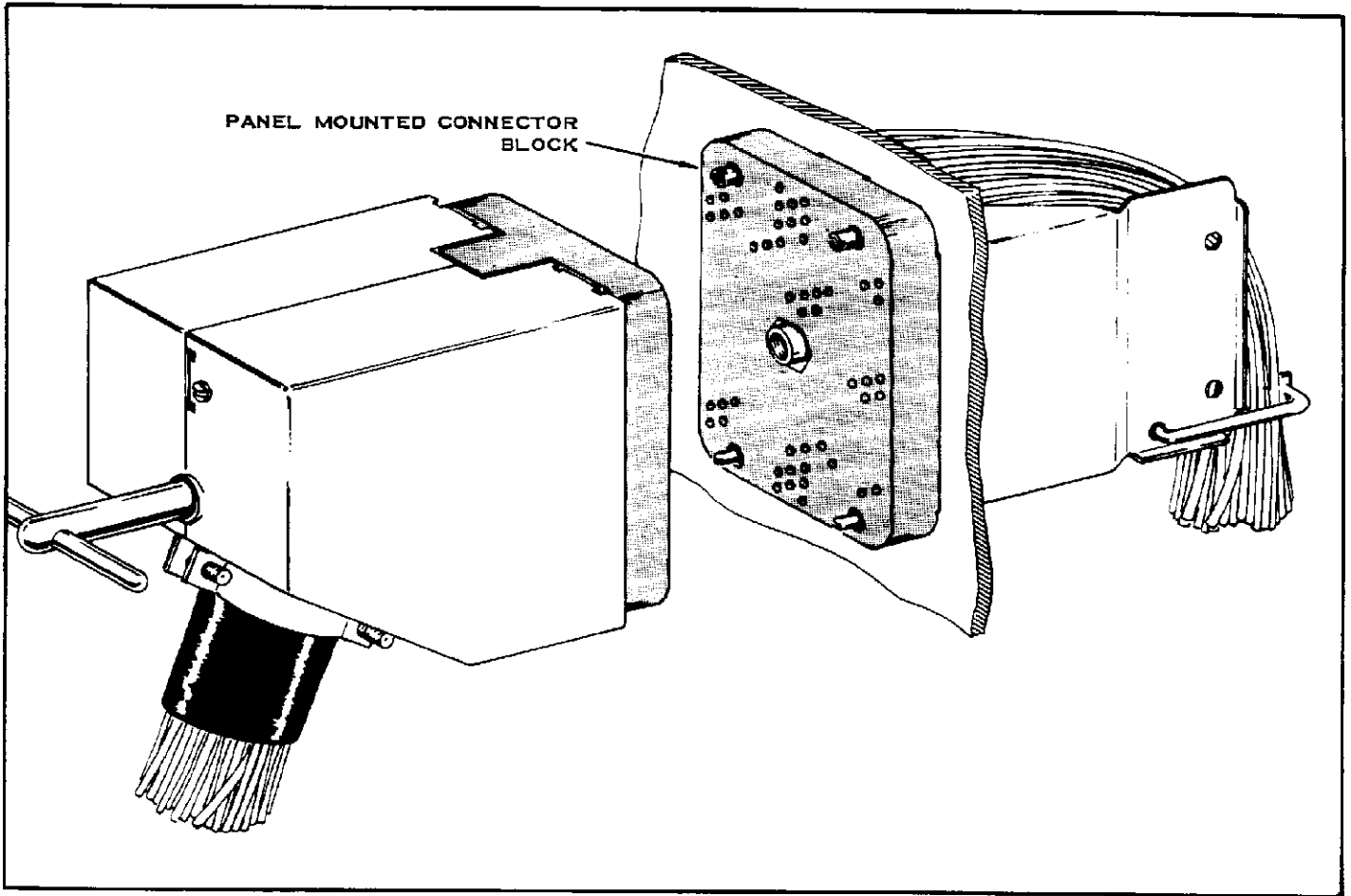


FIGURE 8

Данный компонент на территории Российской Федерации

Вы можете приобрести в компании MosChip.

Для оперативного оформления запроса Вам необходимо перейти по данной ссылке:

<http://moschip.ru/get-element>

Вы можете разместить у нас заказ для любого Вашего проекта, будь то серийное производство или разработка единичного прибора.

В нашем ассортименте представлены ведущие мировые производители активных и пассивных электронных компонентов.

Нашей специализацией является поставка электронной компонентной базы двойного назначения, продукции таких производителей как XILINX, Intel (ex.ALTERA), Vicor, Microchip, Texas Instruments, Analog Devices, Mini-Circuits, Amphenol, Glenair.

Сотрудничество с глобальными дистрибьюторами электронных компонентов, предоставляет возможность заказывать и получать с международных складов практически любой перечень компонентов в оптимальные для Вас сроки.

На всех этапах разработки и производства наши партнеры могут получить квалифицированную поддержку опытных инженеров.

Система менеджмента качества компании отвечает требованиям в соответствии с ГОСТ Р ИСО 9001, ГОСТ РВ 0015-002 и ЭС РД 009

Офис по работе с юридическими лицами:

105318, г.Москва, ул.Щербаковская д.3, офис 1107, 1118, ДЦ «Щербаковский»

Телефон: +7 495 668-12-70 (многоканальный)

Факс: +7 495 668-12-70 (доб.304)

E-mail: info@moschip.ru

Skype отдела продаж:

moschip.ru

moschip.ru_4

moschip.ru_6

moschip.ru_9