

High Frequency 50 GHz Thin Film Chip Resistor



FEATURES

- Operating frequency 50 GHz
- Thin film microwave resistors
- SMD wraparound or flip chip resistor
- Small size, down to 20 mils by 16 mils
- Edged trimmed block resistors
- Pure alumina substrate (99.5 %)
- Ohmic range: 10R to 500R
- Design kits available
- Small internal reactance (LC down to 1×10^{-24})
- Tolerance 1 %, 2 %, 5 %, 10 %
- TCR: 100 ppm/°C in (-55 °C, +155 °C) temperature range
- Material categorization: for definitions of compliance please see www.vishay.com/doc?99912



RoHS
COMPLIANT
HALOGEN
FREE
GREEN
(5-2008)

Those miniaturized components are designed in such a way that their internal reactance is very small. When correctly mounted and utilized, they function as almost pure resistors on a very large range of frequency, up to 50 GHz.

STANDARD ELECTRICAL SPECIFICATIONS						
MODEL	SIZE	RESISTANCE RANGE Ω	RATED POWER P_n W	LIMITING ELEMENT VOLTAGE V	TOLERANCE \pm %	TEMPERATURE COEFFICIENT \pm ppm/°C
CH02016	02016	10 to 500	0.030	30	2, 5, 10	100
CH0402	0402	10 to 500	0.050	37	1, 2, 5, 10	100
CH0603	0603	10 to 500	0.125	50	1, 2, 5, 10	100

DIMENSIONS in millimeters (inches)					
CASE SIZE MAX. TOL. + 0.1 (+ 0.004) MIN. TOL. - 0.1 (- 0.004)	DIMENSIONS				
	A (1)	B	C	D/E	
	MAX. TOL. + 0.1 (+ 0.004) MIN. TOL. - 0.1 (- 0.004)	MAX. TOL. + 0.1 (+ 0.004) MIN. TOL. - 0.1 (- 0.004)	MAX. TOL. + 0.127 (+ 0.005) MIN. TOL. - 0.127 (- 0.005)	MIN.	MAX.
02016	0.48 (0.020)	0.39 (0.016)	0.42 (0.02) (2)	0.11 (0.004)	0.15 (0.008)
0402	1.00 (0.040)	0.6 (0.023)	0.5 (0.02)	0.15 (0.006)	0.35 (0.014)
0603	1.52 (0.060)	0.75 (0.030)	0.5 (0.02)	0.25 (0.010)	0.51 (0.020)

Notes

- (1) For CH0402 and CH0603 with P termination, A dimension is increased by 0.2 mm
 (2) + or - 0.07 mm

LAND PATTERN FLIP CHIP TERMINATIONS in millimeters


CHIP SIZE	Z _{max.}	X _{max.}	G _{min.}
02016	0.53	0.44	0.15
0402	1.4	0.650	0.4
0603	1.71	0.9	0.760

Note

- Suggested land pattern: According to IPC-7351

Dimension and tolerance of land pattern shall be defined by PCB designer; PCB can be designed according to IPC-7351A "Generic Requirements for Surface Mount Design and Land Pattern Standard"

Example of land pattern: Fabrication allowance, assembly location and min. or max. level density board are not included in the example below.

According to IPC-7351A "Generic Requirements for Surface Mount Design and Land Pattern Standard":

$$Z_{max.} = A_{min.} + 2J_T + \sqrt{(C_A^2 + F^2 + P^2)}$$

with C: "Unilateral profile tolerance for the component";

$$G_{min.} = F_{max.} + 2J_H - \sqrt{(C_F^2 + F^2 + P^2)}$$

F: "Unilateral profile tolerance for the board land pattern";

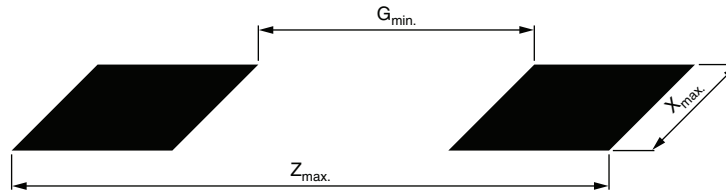
$$X_{max.} = B_{min.} + 2J_S + \sqrt{(C_B^2 + F^2 + P^2)}$$

and P: "Diameter of true position placement accuracy to the center of land pattern".



For rectangular component Flip-Chip mounting, we suggest:

JT (TOE)	0 mm
JH (HELL)	0 mm
JS (SDE)	0 mm

WRAPAROUND TERMINATIONS in millimeters


CHIP SIZE	Z _{max.}	G _{min.}	X _{max.}
0402	1.55	0.15	0.73
0603	2.37	0.35	0.98

TOLERANCE VS. OHMIC VALUES

Ohmic range	10 Ω ≤ R < 50 Ω	50 Ω ≤ R < 100 Ω	100 Ω ≤ R ≤ 500 Ω
Tolerance	5 %, 10 %	2 %, 5 %, 10 %	1 %, 2 %, 5 %, 10 % ⁽¹⁾

Note

- ⁽¹⁾ 1 % tolerance not applicable for case 02016.



PREFERRED MODELS AND VALUES

Vishay Sfernice highly recommend to use the smallest sizes and flip chip version to get the best performances.

Recommended Values:

10R/18R/25R/50R/75R/100R/150R/180R/200R/250R/330R/500R

Those values are available with a **MOQ of 100 pieces.**

Other values can be ordered upon request, but higher MOQ will apply: 1000 pieces for CH02016, 500 pieces for CH0402, 50 pieces for CH0603.

Recommended terminations:

F

Recommended tolerance:

2 %

Design kits are available Ex Stock in CH02016 and CH0402 sizes. There are 20 pieces per recommended value. F termination. 5 % tolerance.

Those kits are packaged in pieces of tape and delivered in ESD bags.

PACKAGING

Standard packaging is waffle pack for sizes 0402 and 0603 and plastic tape and reel (low conductivity) for size 02016.

Paper tape and reel is available for size 0402 and either paper tape and reel or plastic tape and reel (low conductivity) for size 0603.

Depending on the type of terminations, parts will be packed differently:

One face:

- Gold terminations: Active face up
- Tin/silver termination: Active face down

Note

- Please refer to Vishay Sfernice Application Note "Guidelines for Vishay Sfernice Resistive and Inductive Products" for soldering recommendation (document number 52029, 3. Guidelines for Surface Mounting Components (SMD), profile number 3 applies

SIZE	MOQ	NUMBER OF PIECES PER PACKAGE			TAPE WIDTH
		WAFFLE PACK 2" X 2"	TAPE AND REEL		
			Min.	Max.	
02016	See MOQ mentioned on preferred models and values	484	100	5000	8 mm
0402		100			
0603		100			

PACKAGING RULES

Waffle Pack

Can be filled up to maximum quantity indicated in the table here above, taking into account the minimum order quantity. When quantity ordered exceeds maximum quantity of a single waffle pack, the waffle packs are stacked up on the top of each other and closed by one single cover. To get "not stacked up" waffle pack in case of ordered quantity > maximum number of pieces per package: Please consult Vishay Sfernice for specific ordering code.

Tape and Reel

See Part Numbering information to get the quantity desired by tape.

GLOBAL PART NUMBER INFORMATION

New Global Part Numbering: CH0402-50RJF (preferred part number format)

C	H	0	4	0	2	-	5	0	R	J	F	T		9	9	9
GLOBAL MODEL CH		SIZE 02016 0402 0603		OHMIC VALUE 10R to 500R		TOLERANCE F = 1 % G = 2 % J = 5 % K = 10 %		TERMINATION ⁽¹⁾ F (Flip Chip): SnAg over nickel barrier N (W/A): SnAg over nickel barrier (except 02016) P (one face): ⁽²⁾ Gold bonding pads G (W/A): Gold (except 02016)			PACKAGING For more information see Codification of Packaging table		OPTION From 1 to 3 digits. Leave blank if no option.			

 Historical Part Number example: CH02016-100RGFPT1K (tapes of 1K pieces)
 CH0402-50RJF (waffle pack)

Note

- Historical part numbers are not recommended but can still be used for ordering.

CODIFICATION OF PACKAGING

WAFFLE PACK (standard packaging for CH0402 and CH0603)	
W	100 min., 1 mult
PLASTIC TAPE (standard packaging for CH02016 and CH0603)	
T	100 min., 1 mult
TA	100 min., 100 mult
TB	250 min., 250 mult
TC	500 min., 500 mult
TD	1000 min., 1000 mult
TE	2500 min., 2500 mult
TF	Full tape (quantity depending on size of chips)
PAPER TAPE (standard packaging for CH0402 - available for CH0603)	
PT	100 min., 1 mult
PA	100 min., 100 mult
PB	250 min., 250 mult
PC	500 min., 500 mult
PD	1000 min., 1000 mult
PE	2500 min., 2500 mult
PF	Full tape (quantity depending on size of chips)

TYPICAL HIGH FREQUENCY PERFORMANCE ELECTRICAL MODEL


C	Internal shunt capacitance
L	Internal inductance
R	Resistance
Z	Internal impedance (R, L, C)
L _c	External connection inductance
C _g	External capacitance to ground

The complex impedance of the chip resistor is given by the following equations:

$$Z = \frac{R + j\omega(L - R^2C - L^2C\omega^2)}{1 + C[(R^2C - 2L)\omega^2 + L^2C\omega^4]}$$

$$\frac{|Z|}{R} = \frac{1}{1 + C[(R^2C - 2L)\omega^2 + L^2C\omega^4]} \times \sqrt{1 + \left[\frac{\omega(L - R^2C - L^2C\omega^2)}{R} \right]^2}$$

$$\theta = \tan^{-1} \frac{\omega(L - R^2C - L^2C\omega^2)}{R}$$

Notes

- $\omega = 2 \times \pi \times f$
- f : Frequency

The chip resistor itself is purely resistive when $R = \sqrt{\frac{L}{C}}$. The smaller the L x C product the greater the frequency range over which the resistor looks approximately resistive.

This can be seen on the graphs showing the ratio $\frac{|Z|}{R}$ versus frequency.

R, L and C are relevant to the chip resistor itself.

L_c and C_g also depends on the way the chip resistor is mounted.

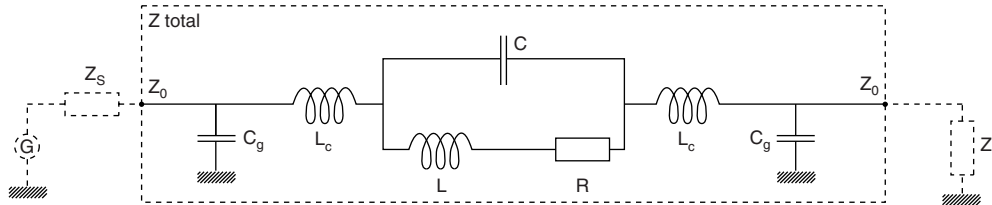
It is important to notice that after assembly the external reactance of L_c and C_g will be combined to internal reactance of L and C. This combination can upgrade or downgrade the HF behaviour of the component.

This is why we are displaying two sets of data:

- $\frac{|Z|}{R}$ versus frequency curves which aims to show at a glance the intrinsic HF performance of a given chip resistor
- S-parameters versus frequency curves relevant to chip resistor when assembled on ideal Z_0 impedance transmission line

These lines are terminated with adapted source and load impedance respectively Z_s and Z_l with $Z_0 = Z_L = Z_s$ (for others configurations please consult us).

Equivalent circuit for S-parameters:



S-parameters are computed taking into account all the resistive, inductive and capacitive elements (Z_{total}) and $Z_0 = Z_L = Z_s = R$.



INTERNAL IMPEDANCE CURVES



Internal impedance curve for 02016 size (F and P terminations)



Internal impedance curve for 0402 size (F and P terminations)



INTERNAL IMPEDANCE CURVES



Internal impedance curve for 0402 size (N and G terminations)



Internal impedance curve for 0603 size (F and P terminations)

INTERNAL IMPEDANCE CURVES



Internal impedance curve for 0603 size (N and G terminations)

S-PARAMETER

CH02016 (F and P Terminations)



CH02016 flip chip ($Z_0 = Z_1 = Z_s = R = 50 \Omega$)



CH02016 flip chip ($Z_0 = Z_1 = Z_s = R = 100 \Omega$)



S-PARAMETER

CH0402 (F and P Terminations)



CH0402 flip chip ($Z_0 = Z_1 = Z_s = R = 50 \Omega$)



CH0402 flip chip ($Z_0 = Z_1 = Z_s = R = 100 \Omega$)

CH0402 (N and G Terminations)



CH0402 wraparound ($Z_0 = Z_1 = Z_s = R = 50 \Omega$)



CH0402 wraparound ($Z_0 = Z_1 = Z_s = R = 100 \Omega$)

CH0603 (F and P Terminations)



CH0603 flip chip ($Z_0 = Z_1 = Z_s = R = 50 \Omega$)



CH0603 flip chip ($Z_0 = Z_1 = Z_s = R = 100 \Omega$)



S-PARAMETER

CH0603 (N and G Terminations)





Disclaimer

ALL PRODUCT, PRODUCT SPECIFICATIONS AND DATA ARE SUBJECT TO CHANGE WITHOUT NOTICE TO IMPROVE RELIABILITY, FUNCTION OR DESIGN OR OTHERWISE.

Vishay Intertechnology, Inc., its affiliates, agents, and employees, and all persons acting on its or their behalf (collectively, "Vishay"), disclaim any and all liability for any errors, inaccuracies or incompleteness contained in any datasheet or in any other disclosure relating to any product.

Vishay makes no warranty, representation or guarantee regarding the suitability of the products for any particular purpose or the continuing production of any product. To the maximum extent permitted by applicable law, Vishay disclaims (i) any and all liability arising out of the application or use of any product, (ii) any and all liability, including without limitation special, consequential or incidental damages, and (iii) any and all implied warranties, including warranties of fitness for particular purpose, non-infringement and merchantability.

Statements regarding the suitability of products for certain types of applications are based on Vishay's knowledge of typical requirements that are often placed on Vishay products in generic applications. Such statements are not binding statements about the suitability of products for a particular application. It is the customer's responsibility to validate that a particular product with the properties described in the product specification is suitable for use in a particular application. Parameters provided in datasheets and/or specifications may vary in different applications and performance may vary over time. All operating parameters, including typical parameters, must be validated for each customer application by the customer's technical experts. Product specifications do not expand or otherwise modify Vishay's terms and conditions of purchase, including but not limited to the warranty expressed therein.

Except as expressly indicated in writing, Vishay products are not designed for use in medical, life-saving, or life-sustaining applications or for any other application in which the failure of the Vishay product could result in personal injury or death. Customers using or selling Vishay products not expressly indicated for use in such applications do so at their own risk. Please contact authorized Vishay personnel to obtain written terms and conditions regarding products designed for such applications.

No license, express or implied, by estoppel or otherwise, to any intellectual property rights is granted by this document or by any conduct of Vishay. Product names and markings noted herein may be trademarks of their respective owners.

Material Category Policy

Vishay Intertechnology, Inc. hereby certifies that all its products that are identified as RoHS-Compliant fulfill the definitions and restrictions defined under Directive 2011/65/EU of The European Parliament and of the Council of June 8, 2011 on the restriction of the use of certain hazardous substances in electrical and electronic equipment (EEE) - recast, unless otherwise specified as non-compliant.

Please note that some Vishay documentation may still make reference to RoHS Directive 2002/95/EC. We confirm that all the products identified as being compliant to Directive 2002/95/EC conform to Directive 2011/65/EU.

Vishay Intertechnology, Inc. hereby certifies that all its products that are identified as Halogen-Free follow Halogen-Free requirements as per JEDEC JS709A standards. Please note that some Vishay documentation may still make reference to the IEC 61249-2-21 definition. We confirm that all the products identified as being compliant to IEC 61249-2-21 conform to JEDEC JS709A standards.

Данный компонент на территории Российской Федерации

Вы можете приобрести в компании MosChip.

Для оперативного оформления запроса Вам необходимо перейти по данной ссылке:

<http://moschip.ru/get-element>

Вы можете разместить у нас заказ для любого Вашего проекта, будь то серийное производство или разработка единичного прибора.

В нашем ассортименте представлены ведущие мировые производители активных и пассивных электронных компонентов.

Нашей специализацией является поставка электронной компонентной базы двойного назначения, продукции таких производителей как XILINX, Intel (ex.ALTERA), Vicor, Microchip, Texas Instruments, Analog Devices, Mini-Circuits, Amphenol, Glenair.

Сотрудничество с глобальными дистрибьюторами электронных компонентов, предоставляет возможность заказывать и получать с международных складов практически любой перечень компонентов в оптимальные для Вас сроки.

На всех этапах разработки и производства наши партнеры могут получить квалифицированную поддержку опытных инженеров.

Система менеджмента качества компании отвечает требованиям в соответствии с ГОСТ Р ИСО 9001, ГОСТ РВ 0015-002 и ЭС РД 009

Офис по работе с юридическими лицами:

105318, г.Москва, ул.Щербаковская д.3, офис 1107, 1118, ДЦ «Щербаковский»

Телефон: +7 495 668-12-70 (многоканальный)

Факс: +7 495 668-12-70 (доб.304)

E-mail: info@moschip.ru

Skype отдела продаж:

moschip.ru

moschip.ru_4

moschip.ru_6

moschip.ru_9