

LT3724

High Voltage Current Mode Step-Down Converter

DESCRIPTION

Demonstration Circuit 736A is a 200kHz high voltage, current-mode DC/DC step-down converter featuring the [LT[®]3724](#).

The circuit operates from a V_{IN} range of 30V to 55V and outputs 24V at 3A (72W). A soft-start feature controls the output voltage slew rate at start-up, reducing current surges and voltage overshoots. Burst Mode[®] operation that improves the efficiency at light loads can be enabled with a jumper.

An optional boost bias circuit is provided on the bottom side of the board for back-driving the LT3724 internal regulator from the output voltage. Customers might want to use this optional circuit with modified applications that have relatively high input voltages and low (~5V) output voltages. In such applications, the optional circuit can increase the overall efficiency by reducing the power lost

in the LT3724. The demonstration circuit has also been laid out with the option for a second switching MOSFET to facilitate higher output currents. The circuit design can be modified for a boost converter configuration.

This circuit is suitable for a wide range of Industrial control systems and particularly suitable for 12V/42V automotive applications and 48V Telecom power supplies.

The LT3724 data sheet gives a complete description of the part, operation and application information. The data sheet must be read in conjunction with this demo manual.

Design files for this circuit board are available at <http://www.linear.com/demo>

LT, LT, LTC, LTM, Linear Technology, the Linear logo and Burst Mode are registered trademarks of Linear Technology Corporation. All other trademarks are the property of their respective owners.

PERFORMANCE SUMMARY

Specifications are at $T_A = 25^{\circ}\text{C}$

PARAMETER	CONDITIONS	MIN	TYP	MAX	UNITS
Input Voltage Range		30		55	V
Efficiency	$V_{IN} = 30\text{V}, I_{OUT} = 3.0\text{A}$		97.4		%
	$V_{IN} = 48\text{V}, I_{OUT} = 3.0\text{A}$		95.4		%
	$V_{IN} = 55\text{V}, I_{OUT} = 3.0\text{A}$		94.7		%
Switching Frequency			200		kHz
Output Voltage	$I_{OUT} = 0\text{A to } 3.0\text{A}$		24		V
Output Voltage Ripple	$V_{IN} = 48\text{V}, I_{OUT} = 3.0\text{A}$		100		mV

QUICK START PROCEDURE

DC736A is easy to set up to evaluate the performance of the LT3724. Refer to Figure 1 for proper measurement equipment setup and follow the procedure below:

NOTE: When measuring the input or output voltage ripple, care must be taken to avoid a long ground lead on the oscilloscope probe. See Figure 2 for the proper scope technique.

1. Place JP1 in the RUN position.
2. Place JP2 in the desired operating mode: fixed frequency or Burst Mode operation.
3. With power off, connect the input power supply to V_{IN} and GND.
4. With power off, connect the load to V_{OUT} and GND.

5. Turn on the power at the input and adjust the input voltage until the LT3724 turns on.

NOTE: Make sure that the input voltage does not exceed 55V.

6. Check for the proper output voltage.

NOTE: If there is no output, temporarily disconnect the load to make sure that the load is not set too high or is shorted.

7. Once the proper output voltage is established, adjust the input voltage and load within the operating range and observe the output voltage regulation, ripple voltage, efficiency and other parameters.

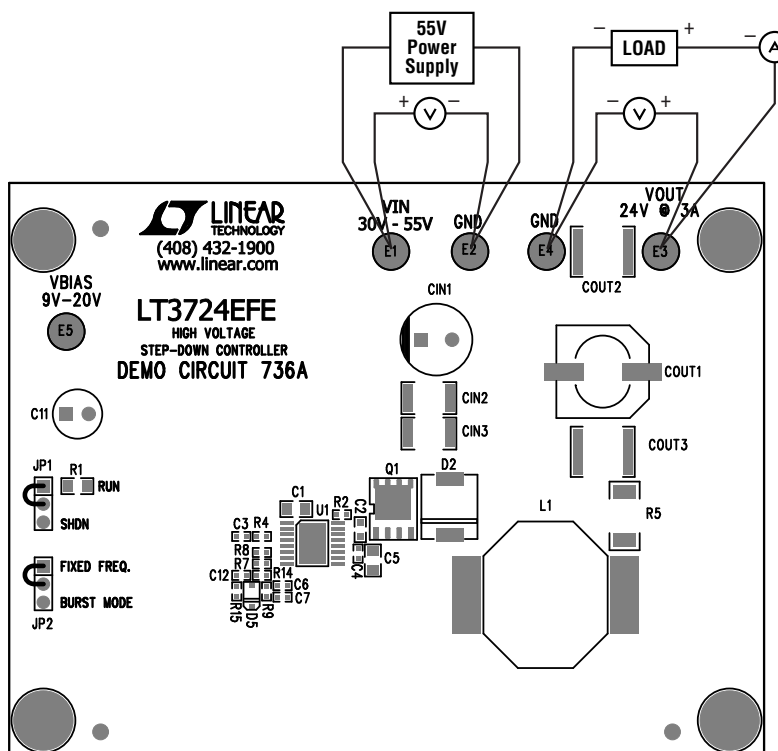


Figure 1. Proper Measurement Equipment Setup

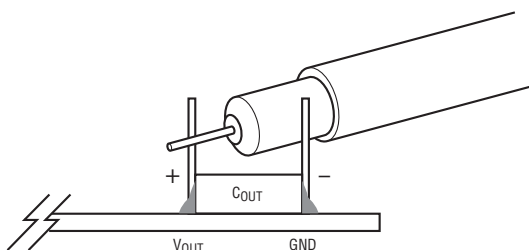


Figure 2. Measuring Output Ripple

PARTS LIST

ITEM	QTY	REFERENCE	PART DESCRIPTION	MANUFACTURER/PART NUMBER
1	1	CIN1	Cap., Aluminum 68μF 63V 20%	Sanyo 63MV68AX-T
2	2	CIN2, CIN3	Cap., X7R 2.2μF 100V 20%	TDK C4532X7R2A225M
3	1	COUT1	Cap., Alum 330μF 35V 10%	Sanyo 35CV330AX-T
4	2	COUT3, COUT2	Cap., X7R 22μF 25V 20%	TDK C5750X7R1E226M
5	1	C1	Cap., NPO 1000pF 100V 10%	AVX 08051A102KAT1A
6	1	C2	Cap., X5R 0.22μF 16V 10%	Taiyo Yuden EMK107BJ224KA
7	1	C3	Cap., X7R 1000pF 25V 10%	AVX 04023C102KAT2A
8	1	C4	Cap., X5R 0.1μF 16V 10%	AVX 0402YD104KAT2A
9	1	C5	Cap., X5R 1μF 16V 10%	Taiyo Yuden EMK212BJ105KG
10	1	C6	Cap., X7R 120pF 25V 10%	AVX 04023C121KAT2A
11	1	C7	Cap., X7R 1500pF 16V 20% 0402	AVX 0402YC152MAT2A
12	1	C12	Cap., X7R 0.01μF 16V 10%	AVX 0402YC103KAT2A
13	1	D1	Diode, Speed Switching	Diodes Inc. BAS19
14	1	D2	Schottky Diode 60V	IR 30BQ060
15	1	D5	Diode, 75V/200mW	Diodes Inc. 1N4148WS
16	1	L1	Inductor, 47μH	Coilcraft D05040H-473MLB
17	1	Q1	MOSFET N-Channel, PowerPak SO8	Vishay Siliconix Si7852DP
18	1	R1	Res, Chip 1M 0.1W 5%	AAC CR10-105JM
19	1	R2	Res/Jumper, Chip 0Ω 0.06W 1A	AAC CJ05-000M
20	1	R3	Res., Chip 52.3k 1/16W 1%	Vishay CRCW0402 52.3K 1%
21	1	R4	Res., Chip 402K 1/16W 1%	AAC CR05-4023FM
22	1	R5	Res., 0.025 0.5W 1%	IRC LRF2010-01-R025-F
23	1	R6	Res., Chip 1M 0.1W 5%	AAC CR16-105JM
24	1	R7	Res., Chip 4.99k 0.06W 1%	AAC CR05-4991FM
25	1	R8	Res., Chip 93.1k 1/16W 1%	AAC CR05-9312FM
26	1	R9	Res., Chip 2.21k 1/16W 1%	AAC CR05-2211FM
27	1	R14	Res., Chip 470 1/16W 5%	AAC CR05-471JM
28	1	R15	Res., Chip 47k 1/16W 5%	AAC CR05-473JM
29	1	U1	I.C., Voltage Regulator	Linear Technology Corporation LT3724EFE

Additional Demo Board Circuit Components

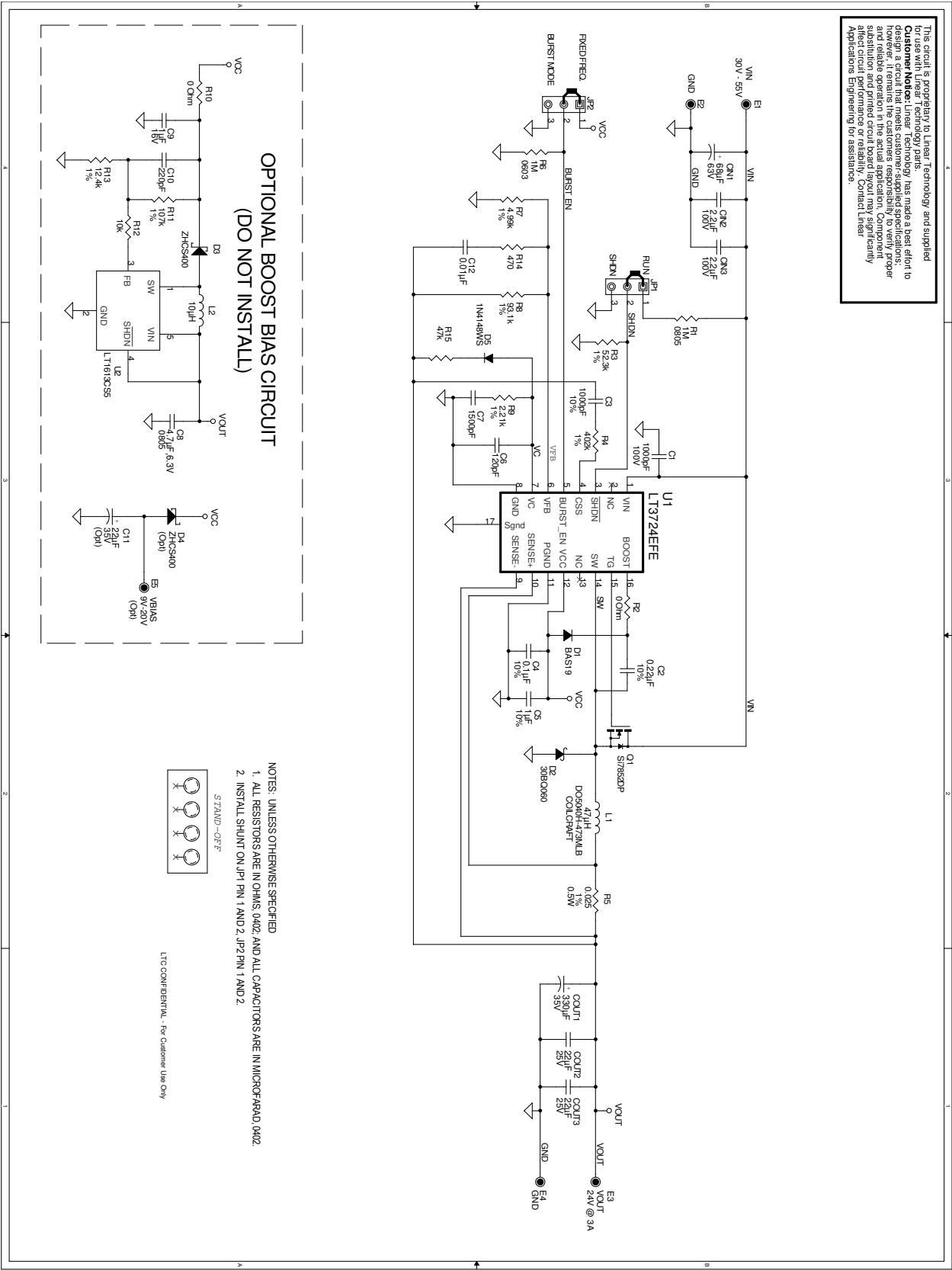
1	0	C8	Cap., X5R C-4.7μF, 6.3V-0805 6.3V 20%	Taiyo Yuden JMK212BJ475MG-T
2	0	C9	Cap., X5R 1μF 16V 20%	Taiyo Yuden EMK212BJ105MG
3	0	C10	Cap., NPO 220pF 25V 10%	AVX 04023A221KAT2A
4	0	C11	Cap., Aluminum 22μF 35V 10%	Sanyo 35MV22UAX
5	0	D3,D4	Schottky Diode, 40V	Zetex ZHCS400
6	0	L2	Inductor, L-10μH	Murata LQH3C100M24
7	0	R10	Res./Jumper, Chip 0Ω 0.06W 1A	AAC CJ05- 000M
8	0	R11	Res., Chip 107k 0.06W 1%	AAC CR05-1073FM
9	0	R12	Res., Chip 10k 0.06W 5%	AAC CR05-103JM
10	0	R13	Res., Chip 12.4k 1/16W 1%	AAC CR05-1242FM
11	0	U2	I.C., Voltage Regulator	Linear Technology Corporation LT1613CS5

DEMO MANUAL DC736A

PARTS LIST

ITEM	QTY	REFERENCE	PART DESCRIPTION	MANUFACTURER/PART NUMBER
Hardware – For Demo Board Only				
1	4	E1, E2, E3, E4	Testpoint, Turret	Mill Max 2501-2
2	0	E5	Testpoint, Turret	Mill Max 2501-2
3	2	JP2, JP1	Headers, 3 Pins 2mm Ctrs.	Comm Con Connectors 2802S-03G2
4	2	XJP1, XJP2	JMP, 3 Pin 1 Row .079CC	Comm Con Connectors CCIJ2MM-138GW

SCHEMATIC DIAGRAM



DEMO MANUAL DC736A

DEMONSTRATION BOARD IMPORTANT NOTICE

Linear Technology Corporation (LTC) provides the enclosed product(s) under the following **AS IS** conditions:

This demonstration board (DEMO BOARD) kit being sold or provided by Linear Technology is intended for use for **ENGINEERING DEVELOPMENT OR EVALUATION PURPOSES ONLY** and is not provided by LTC for commercial use. As such, the DEMO BOARD herein may not be complete in terms of required design-, marketing-, and/or manufacturing-related protective considerations, including but not limited to product safety measures typically found in finished commercial goods. As a prototype, this product does not fall within the scope of the European Union directive on electromagnetic compatibility and therefore may or may not meet the technical requirements of the directive, or other regulations.

If this evaluation kit does not meet the specifications recited in the DEMO BOARD manual the kit may be returned within 30 days from the date of delivery for a full refund. THE FOREGOING WARRANTY IS THE EXCLUSIVE WARRANTY MADE BY THE SELLER TO BUYER AND IS IN LIEU OF ALL OTHER WARRANTIES, EXPRESSED, IMPLIED, OR STATUTORY, INCLUDING ANY WARRANTY OF MERCHANTABILITY OR FITNESS FOR ANY PARTICULAR PURPOSE. EXCEPT TO THE EXTENT OF THIS INDEMNITY, NEITHER PARTY SHALL BE LIABLE TO THE OTHER FOR ANY INDIRECT, SPECIAL, INCIDENTAL, OR CONSEQUENTIAL DAMAGES.

The user assumes all responsibility and liability for proper and safe handling of the goods. Further, the user releases LTC from all claims arising from the handling or use of the goods. Due to the open construction of the product, it is the user's responsibility to take any and all appropriate precautions with regard to electrostatic discharge. Also be aware that the products herein may not be regulatory compliant or agency certified (FCC, UL, CE, etc.).

No License is granted under any patent right or other intellectual property whatsoever. **LTC assumes no liability for applications assistance, customer product design, software performance, or infringement of patents or any other intellectual property rights of any kind.**

LTC currently services a variety of customers for products around the world, and therefore this transaction **is not exclusive**.

Please read the DEMO BOARD manual prior to handling the product. Persons handling this product must have electronics training and observe good laboratory practice standards. **Common sense is encouraged.**

This notice contains important safety information about temperatures and voltages. For further safety concerns, please contact a LTC application engineer.

Mailing Address:

Linear Technology
1630 McCarthy Blvd.
Milpitas, CA 95035

Copyright © 2004, Linear Technology Corporation

dc736af

Данный компонент на территории Российской Федерации

Вы можете приобрести в компании MosChip.

Для оперативного оформления запроса Вам необходимо перейти по данной ссылке:

<http://moschip.ru/get-element>

Вы можете разместить у нас заказ для любого Вашего проекта, будь то серийное производство или разработка единичного прибора.

В нашем ассортименте представлены ведущие мировые производители активных и пассивных электронных компонентов.

Нашей специализацией является поставка электронной компонентной базы двойного назначения, продукции таких производителей как XILINX, Intel (ex.ALTERA), Vicor, Microchip, Texas Instruments, Analog Devices, Mini-Circuits, Amphenol, Glenair.

Сотрудничество с глобальными дистрибьюторами электронных компонентов, предоставляет возможность заказывать и получать с международных складов практически любой перечень компонентов в оптимальные для Вас сроки.

На всех этапах разработки и производства наши партнеры могут получить квалифицированную поддержку опытных инженеров.

Система менеджмента качества компании отвечает требованиям в соответствии с ГОСТ Р ИСО 9001, ГОСТ РВ 0015-002 и ЭС РД 009

Офис по работе с юридическими лицами:

105318, г.Москва, ул.Щербаковская д.3, офис 1107, 1118, ДЦ «Щербаковский»

Телефон: +7 495 668-12-70 (многоканальный)

Факс: +7 495 668-12-70 (доб.304)

E-mail: info@moschip.ru

Skype отдела продаж:

moschip.ru

moschip.ru_4

moschip.ru_6

moschip.ru_9