



Is Now Part of



ON Semiconductor®

To learn more about ON Semiconductor, please visit our website at
www.onsemi.com

Please note: As part of the Fairchild Semiconductor integration, some of the Fairchild orderable part numbers will need to change in order to meet ON Semiconductor's system requirements. Since the ON Semiconductor product management systems do not have the ability to manage part nomenclature that utilizes an underscore (_), the underscore (_) in the Fairchild part numbers will be changed to a dash (-). This document may contain device numbers with an underscore (_). Please check the ON Semiconductor website to verify the updated device numbers. The most current and up-to-date ordering information can be found at www.onsemi.com. Please email any questions regarding the system integration to Fairchild_questions@onsemi.com.

ON Semiconductor and the ON Semiconductor logo are trademarks of Semiconductor Components Industries, LLC dba ON Semiconductor or its subsidiaries in the United States and/or other countries. ON Semiconductor owns the rights to a number of patents, trademarks, copyrights, trade secrets, and other intellectual property. A listing of ON Semiconductor's product/patent coverage may be accessed at www.onsemi.com/site/pdf/Patent-Marking.pdf. ON Semiconductor reserves the right to make changes without further notice to any products herein. ON Semiconductor makes no warranty, representation or guarantee regarding the suitability of its products for any particular purpose, nor does ON Semiconductor assume any liability arising out of the application or use of any product or circuit, and specifically disclaims any and all liability, including without limitation special, consequential or incidental damages. Buyer is responsible for its products and applications using ON Semiconductor products, including compliance with all laws, regulations and safety requirements or standards, regardless of any support or applications information provided by ON Semiconductor. "Typical" parameters which may be provided in ON Semiconductor data sheets and/or specifications can and do vary in different applications and actual performance may vary over time. All operating parameters, including "Typicals" must be validated for each customer application by customer's technical experts. ON Semiconductor does not convey any license under its patent rights nor the rights of others. ON Semiconductor products are not designed, intended, or authorized for use as a critical component in life support systems or any FDA Class 3 medical devices or medical devices with a same or similar classification in a foreign jurisdiction or any devices intended for implantation in the human body. Should Buyer purchase or use ON Semiconductor products for any such unintended or unauthorized application, Buyer shall indemnify and hold ON Semiconductor and its officers, employees, subsidiaries, affiliates, and distributors harmless against all claims, costs, damages, and expenses, and reasonable attorney fees arising out of, directly or indirectly, any claim of personal injury or death associated with such unintended or unauthorized use, even if such claim alleges that ON Semiconductor was negligent regarding the design or manufacture of the part. ON Semiconductor is an Equal Opportunity/Affirmative Action Employer. This literature is subject to all applicable copyright laws and is not for resale in any manner.



FPF2C8P2NL07A

F2, 3-phase, 3-level NPC module with Press-fit / NTC

General Description

Fairchild's new inverter modules provide low conduction and switching loss as well. And Press-Fit technology provides simple and reliable mounting. These modules are optimized for the applications such as solar inverter and UPS where a high efficiency and robust design is needed.

Electrical Features

- High Efficiency
- Low Conduction and Switching Losses
- Field Stop IGBT for Inner and Outer Switch
- STEALTH™ Diode for Path Diode
- Built-in NTC for Temperature Monitoring

Mechanical Features

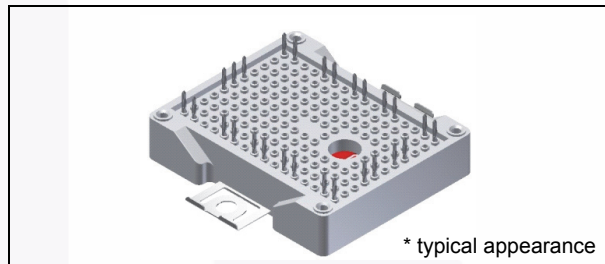
- Compact Size : F2 Package
- Press-fit Contact Technology
- Al₂O₃ Substrate with Low Thermal Resistance

Applications

- Solar Inverter
- UPS

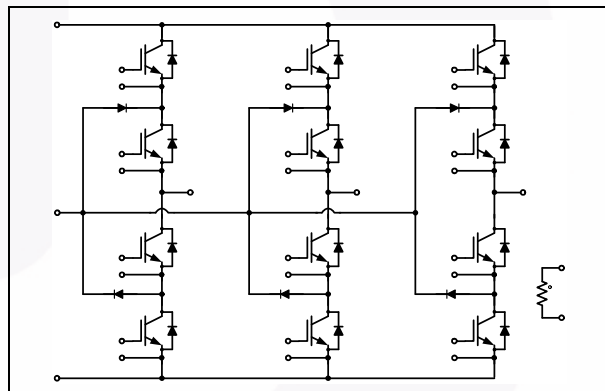
Related Materials

- AN-4167: Mounting Guideline for F1 / F2 Modules with Press-Fit Pins



* typical appearance

Package Code: F2



Internal Circuit Diagram

Package Marking and Ordering Information

Device	Device Marking	Package	Packing Type	Quantity / Tray
FPF2C8P2NL07A	FPF2C8P2NL07A	F2	Tray	14

FPF2C8P2NL07A - F2, 3-phase, 3-level NPC module with Press-fit / NTC

Absolute Maximum Ratings $T_C = 25^\circ\text{C}$ unless otherwise noted.

Symbol	Description	Rating	Units
Outer IGBT(Q1, Q4, Q5, Q8, Q9, Q12)			
V_{CES}	Collector-Emitter Voltage	650	V
V_{GES}	Gate-Emitter Voltage	± 20	V
I_C	Continuous Collector Current @ $T_C = 80^\circ\text{C}$, $T_{Jmax} = 175^\circ\text{C}$	30	A
I_{CM}	Pulsed Collector Current limited by T_{Jmax}	60	A
P_D	Maximum Power Dissipation @ $T_C = 25^\circ\text{C}$	135	W
T_J	Operating Junction Temperature	- 40 to + 150	$^\circ\text{C}$
Inner IGBT(Q2, Q3, Q6, Q7, Q10, Q11)			
V_{CES}	Collector-Emitter Voltage	650	V
V_{GES}	Gate-Emitter Voltage	± 20	V
I_C	Continuous Collector Current @ $T_C = 80^\circ\text{C}$, $T_{Jmax} = 175^\circ\text{C}$	50	A
I_{CM}	Pulsed Collector Current limited by T_{Jmax}	100	A
P_D	Maximum Power Dissipation @ $T_C = 25^\circ\text{C}$	174	W
T_J	Operating Junction Temperature	- 40 to + 150	$^\circ\text{C}$
Outer - Inner IGBT Series Connection			
SCWT	Short Circuit Withstand Time $V_{DC} = 300\text{ V}$, $V_{GE} = 15\text{ V}$ $T_C = 25^\circ\text{C}$	4	μS
Diode			
V_{RRM}	Peak Repetitive Reverse Voltage	650	V
I_F	Continuous Forward Current @ $T_C = 80^\circ\text{C}$, $T_{Jmax} = 175^\circ\text{C}$	15	A
I_{FM}	Maximum Forward Current	30	A
P_D	Maximum Power Dissipation @ $T_C = 25^\circ\text{C}$	100	W
T_J	Operating Junction Temperature	- 40 to + 150	$^\circ\text{C}$
Module			
T_{STG}	Storage Temperature	- 40 to + 125	$^\circ\text{C}$
V_{ISO}	Isolation Voltage @ AC 1 min.	2500	V
Iso_Material	Internal Isolation Material	Al_2O_3	
T_{MOUNT}	Mounting Torque	2.0 to 5.0	Nm
Creepage	Terminal to Heat Sink	11.5	mm
	Terminal to Terminal	6.3	mm
Clearance	Terminal to Heat Sink	10.0	mm
	Terminal to Terminal	5.0	mm

Electrical Characteristics $T_C = 25^\circ\text{C}$ unless otherwise noted.

Symbol	Parameter	Conditions	Min.	Typ.	Max.	Units	
Outer IGBT							
Off Characteristics							
BV_{CES}	Collector-Emitter Breakdown Voltage	$V_{GE} = 0\text{ V}, I_C = 1\text{ mA}$	650	-	-	V	
I_{CES}	Collector Cut-off Current	$V_{CE} = V_{CES}, V_{GE} = 0\text{ V}$	-	-	250	μA	
I_{GES}	Gate-Emitter Leakage Current	$V_{GE} = V_{GES}, V_{CE} = 0\text{ V}$	-	-	2	μA	
On Characteristics							
$V_{GE(th)}$	Gate-Emitter Threshold Voltage	$V_{GE} = V_{CE}, I_C = 30\text{ mA}$	4.5	5.6	6.7	V	
$V_{CE(sat)}$	Collector-Emitter Saturation Voltage	$I_C = 30\text{ A}, V_{GE} = 15\text{ V}$	-	1.55	2.2	V	
		$I_C = 30\text{ A}, V_{GE} = 15\text{ V} @ T_C = 125^\circ\text{C}$	-	1.75	-	V	
		$I_C = 60\text{ A}, V_{GE} = 15\text{ V}$	-	2.13	-	V	
Switching Characteristics							
$t_{d(on)}$	Turn-On Delay Time	$V_{CC} = 300\text{ V}$ $I_C = 30\text{ A}$ $V_{GE} = \pm 15\text{ V}$ $R_G = 20\ \Omega$ Inductive Load $T_C = 25^\circ\text{C}$	-	33	-	ns	
t_r	Rise Time		-	43	-	ns	
$t_{d(off)}$	Turn-Off Delay Time		-	197	-	ns	
t_f	Fall Time		-	17	-	ns	
E_{ON}	Turn-On Switching Loss per Pulse		-	0.68	-	mJ	
E_{OFF}	Turn-Off Switching Loss per Pulse		-	0.38	-	mJ	
$t_{d(on)}$	Turn-On Delay Time		$V_{CC} = 300\text{ V}$ $I_C = 30\text{ A}$ $V_{GE} = \pm 15\text{ V}$ $R_G = 20\ \Omega$ Inductive Load $T_C = 125^\circ\text{C}$	-	29	-	ns
t_r	Rise Time			-	50	-	ns
$t_{d(off)}$	Turn-Off Delay Time			-	205	-	ns
t_f	Fall Time			-	25	-	ns
E_{ON}	Turn-On Switching Loss per Pulse	-		0.86	-	mJ	
E_{OFF}	Turn-Off Switching Loss per Pulse	-		0.52	-	mJ	
Q_g	Total Gate Charge	$V_{CC} = 300\text{ V}, I_C = 30\text{ A}, V_{GE} = \pm 15\text{ V}$		-	0.26	-	μC
$R_{\theta JC}$	Thermal Resistance of Junction to Case	per Chip		-	-	1.11	$^\circ\text{C/W}$
Inner IGBT							
Off Characteristics							
BV_{CES}	Collector-Emitter Breakdown Voltage	$V_{GE} = 0\text{ V}, I_C = 1\text{ mA}$	650	-	-	V	
I_{CES}	Collector Cut-off Current	$V_{CE} = V_{CES}, V_{GE} = 0\text{ V}$	-	-	250	μA	
I_{GES}	Gate-Emitter Leakage Current	$V_{GE} = V_{GES}, V_{CE} = 0\text{ V}$	-	-	2	μA	
On Characteristics							
$V_{GE(th)}$	Gate-Emitter Threshold Voltage	$V_{GE} = V_{CE}, I_C = 50\text{ mA}$	4.5	5.6	6.7	V	
$V_{CE(sat)}$	Collector-Emitter Saturation Voltage	$I_C = 50\text{ A}, V_{GE} = 15\text{ V}$	-	1.65	2.3	V	
		$I_C = 50\text{ A}, V_{GE} = 15\text{ V} @ T_C = 125^\circ\text{C}$	-	1.95	-	V	
		$I_C = 100\text{ A}, V_{GE} = 15\text{ V}$	-	2.49	-	V	
Switching Characteristics							
$t_{d(on)}$	Turn-On Delay Time	$V_{CC} = 300\text{ V}$ $I_C = 50\text{ A}$ $V_{GE} = \pm 15\text{ V}$ $R_G = 15\ \Omega$ Inductive Load $T_C = 25^\circ\text{C}$	-	41	-	ns	
t_r	Rise Time		-	65	-	ns	
$t_{d(off)}$	Turn-Off Delay Time		-	233	-	ns	
t_f	Fall Time		-	18	-	ns	
E_{ON}	Turn-On Switching Loss per Pulse		-	0.87	-	mJ	
E_{OFF}	Turn-Off Switching Loss per Pulse		-	0.77	-	mJ	
$t_{d(on)}$	Turn-On Delay Time		$V_{CC} = 300\text{ V}$ $I_C = 50\text{ A}$ $V_{GE} = \pm 15\text{ V}$ $R_G = 15\ \Omega$ Inductive Load $T_C = 125^\circ\text{C}$	-	39	-	ns
t_r	Rise Time			-	76	-	ns
$t_{d(off)}$	Turn-Off Delay Time			-	243	-	ns
t_f	Fall Time			-	20	-	ns
E_{ON}	Turn-On Switching Loss per Pulse	-		0.99	-	mJ	
E_{OFF}	Turn-Off Switching Loss per Pulse	-		0.93	-	mJ	
Q_g	Total Gate Charge	$V_{CC} = 300\text{ V}, I_C = 50\text{ A}, V_{GE} = \pm 15\text{ V}$		-	0.39	-	nC
$R_{\theta JC}$	Thermal Resistance of Junction to Case	per Chip		-	-	0.86	$^\circ\text{C/W}$

Electrical Characteristics $T_C = 25^\circ\text{C}$ unless otherwise noted.

Symbol	Parameter	Conditions	Min.	Typ.	Max.	Units
Diode						
V_{FM}	Diode Forward Voltage	$I_F = 15\text{ A}$	-	2.55	3.4	V
		$I_F = 15\text{ A @ }T_C = 125^\circ\text{C}$	-	1.78	-	V
I_R	Reverse Leakage Current	$V_R = 650\text{ V}$	-	-	250	μA
t_{rr}	Reverse Recovery Time	$V_R = 300\text{ V}, I_F = 15\text{ A}$ $di_F / dt = 700\text{ A/us}$ $T_C = 25^\circ\text{C}$	-	23	-	ns
I_{rr}	Reverse Recovery Current		-	9.9	-	A
Q_{rr}	Reverse Recovery Charge		-	113	-	nC
t_{rr}	Reverse Recovery Time	$V_R = 300\text{ V}, I_F = 15\text{ A}$ $di_F / dt = 700\text{ A/us}$ $T_C = 125^\circ\text{C}$	-	49	-	ns
I_{rr}	Reverse Recovery Current		-	15.2	-	A
Q_{rr}	Reverse Recovery Charge		-	366	-	nC
$R_{\theta JC}$	Thermal Resistance of Junction to Case	per Chip	-	-	1.44	$^\circ\text{C/W}$
NTC_ Thermistor						
R_{NTC}	Rated Resistance	$T_C = 25^\circ\text{C}$	-	5.0	-	k Ω
		$T_C = 100^\circ\text{C}$	-	493	-	Ω
	Tolerance	$T_C = 25^\circ\text{C}$	- 5	-	+ 5	%
P_D	Power Dissipation	$T_C = 25^\circ\text{C}$	-	-	20	mW
B_{Value}	B-Constant	$B_{25/50}$	-	3375	-	K
		$B_{25/100}$	-	3436	-	K

Typical Performance Characteristic

Fig 1. Typical Output Characteristics - Outer IGBT

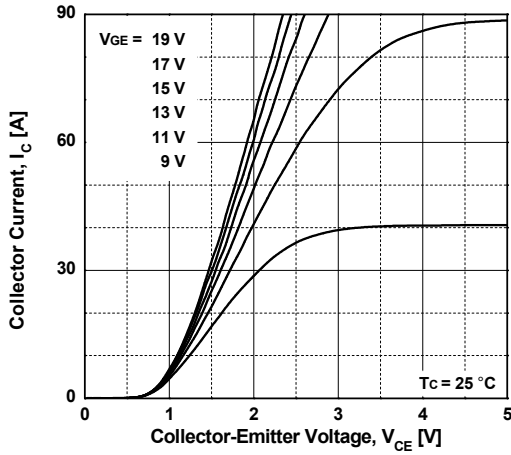


Fig 2. Typical Output Characteristics - Outer IGBT

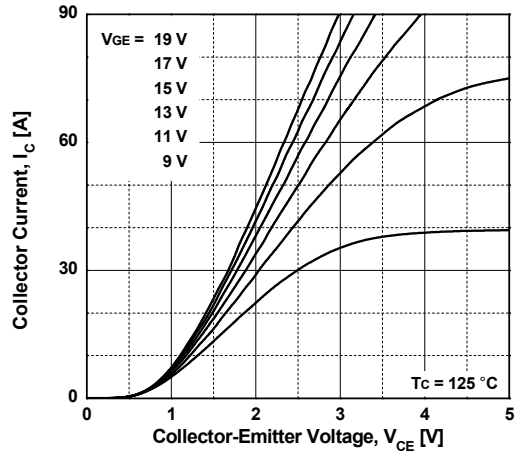


Fig 3. Typical Saturation Voltage Characteristics - Outer IGBT

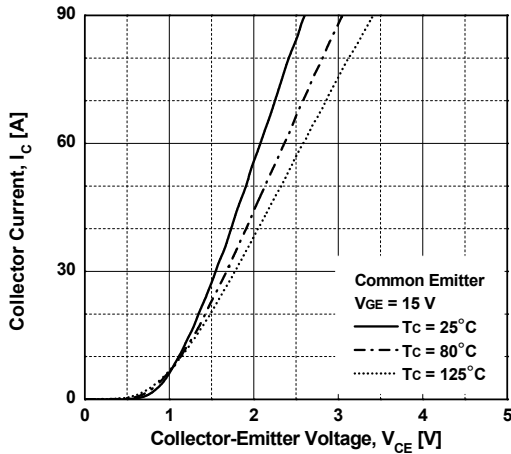


Fig 4. Switching Loss vs. Collector Current - Outer IGBT

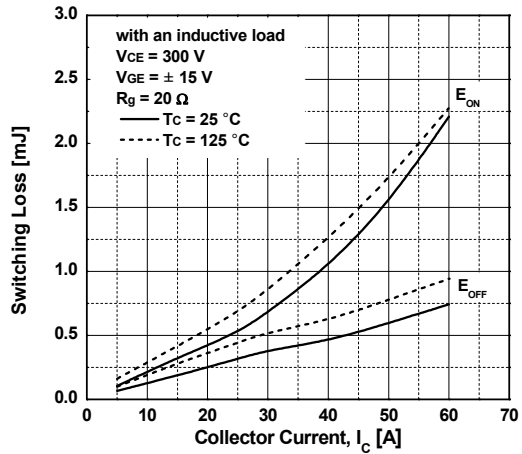


Fig 5. Switching Loss vs. Gate Resistance - Outer IGBT

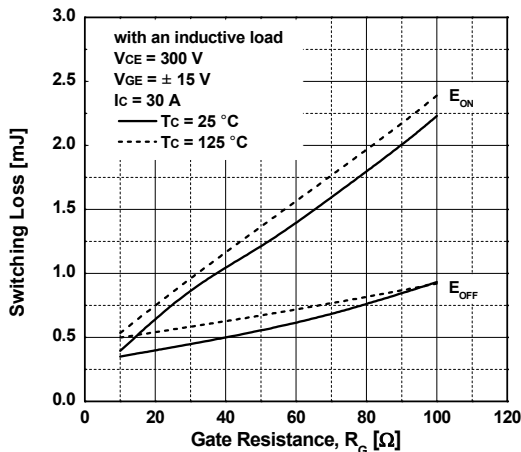
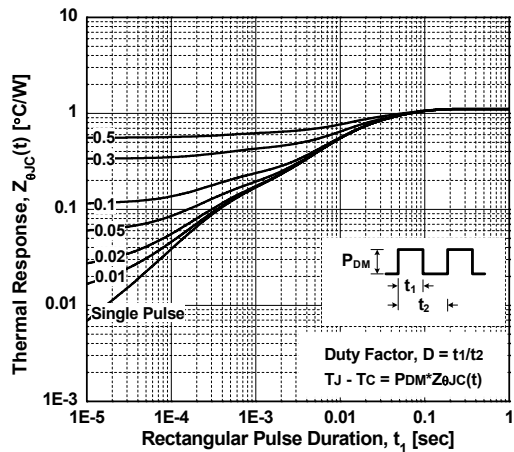


Fig 6. Transient Thermal Impedance - Outer IGBT



Typical Performance Characteristic

Fig 7. Typical Output Characteristics - Inner IGBT

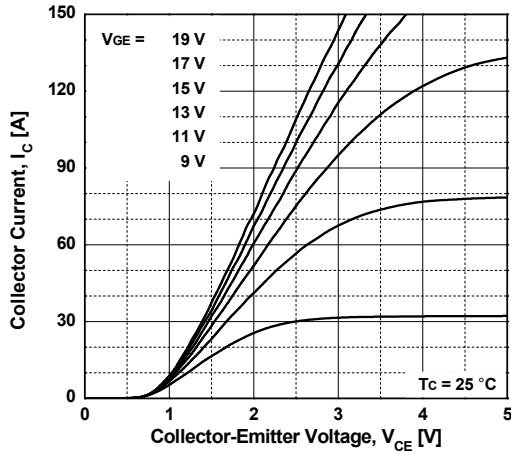


Fig 8. Typical Output Characteristics - Inner IGBT

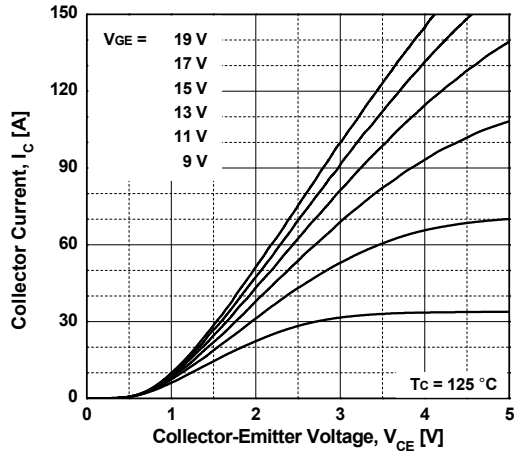


Fig 9. Typical Saturation Voltage Characteristics - Inner IGBT

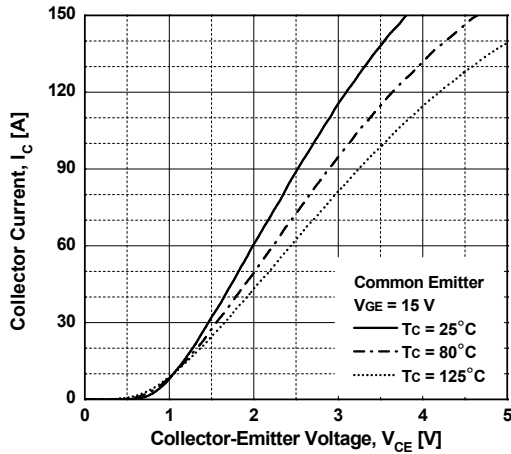


Fig 10. Switching Loss vs. Collector Current - Inner IGBT

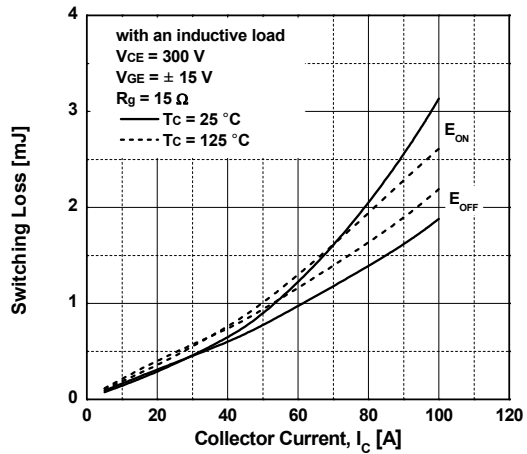


Fig 11. Switching Loss vs. Gate Resistance - Inner IGBT

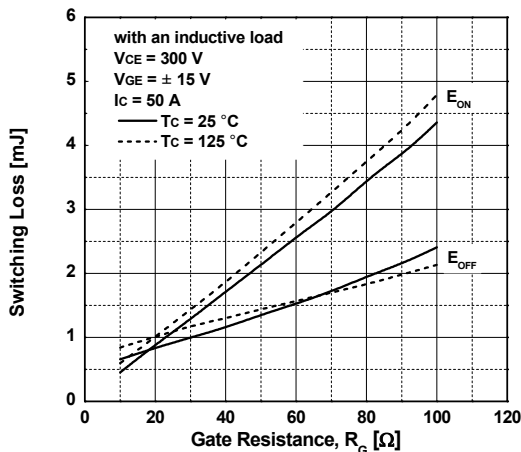
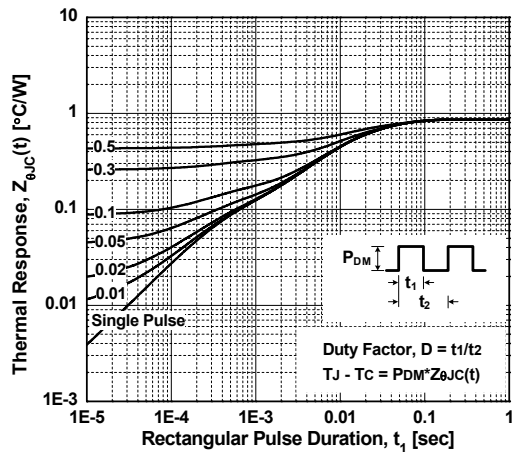


Fig 12. Transient Thermal Impedance - Inner IGBT



Typical Performance Characteristic

Fig 13. Reverse Bias Safe Operating Area (RBSOA) - Outer IGBT

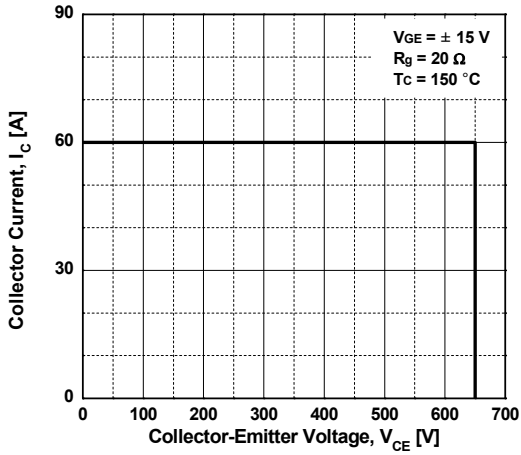


Fig 14. Reverse Bias Safe Operating Area (RBSOA) - Inner IGBT

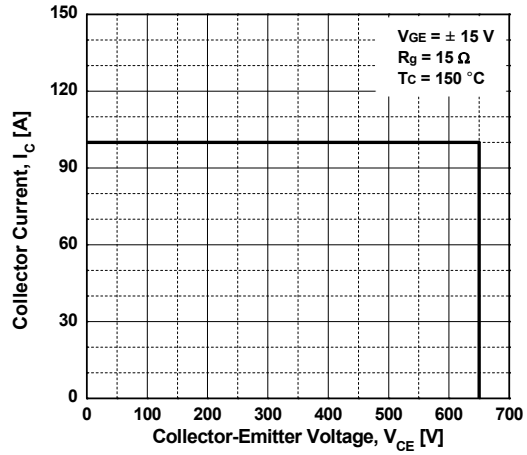


Fig 15. Typical Forward Voltage Drop - Diode

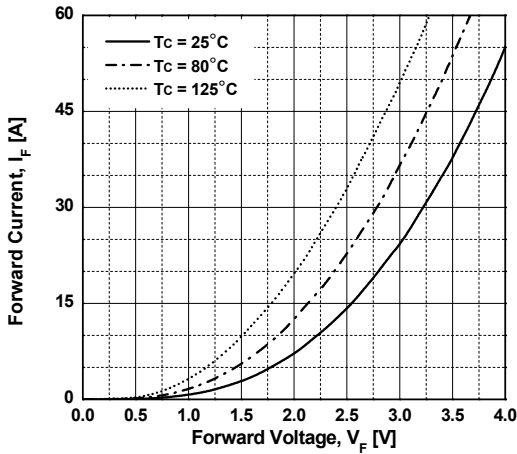


Fig 16. Reverse Recovery Energy vs. Forward Current - Diode

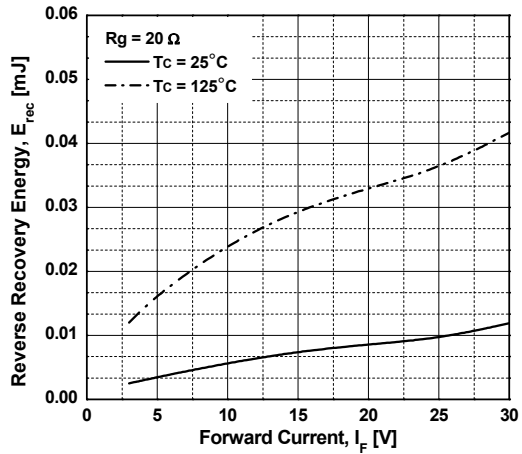
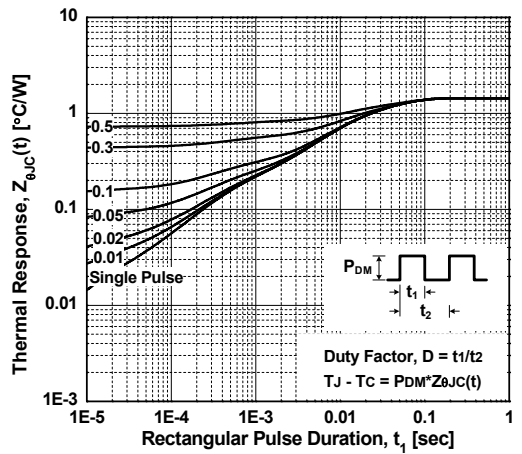
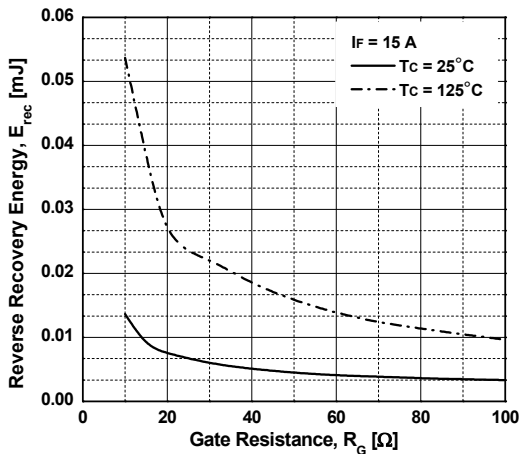
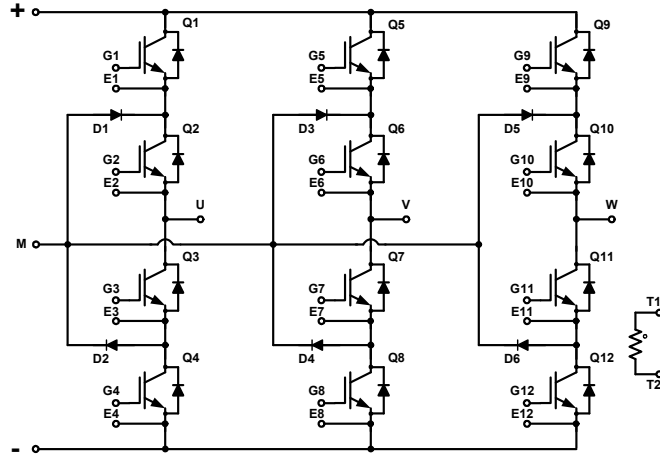


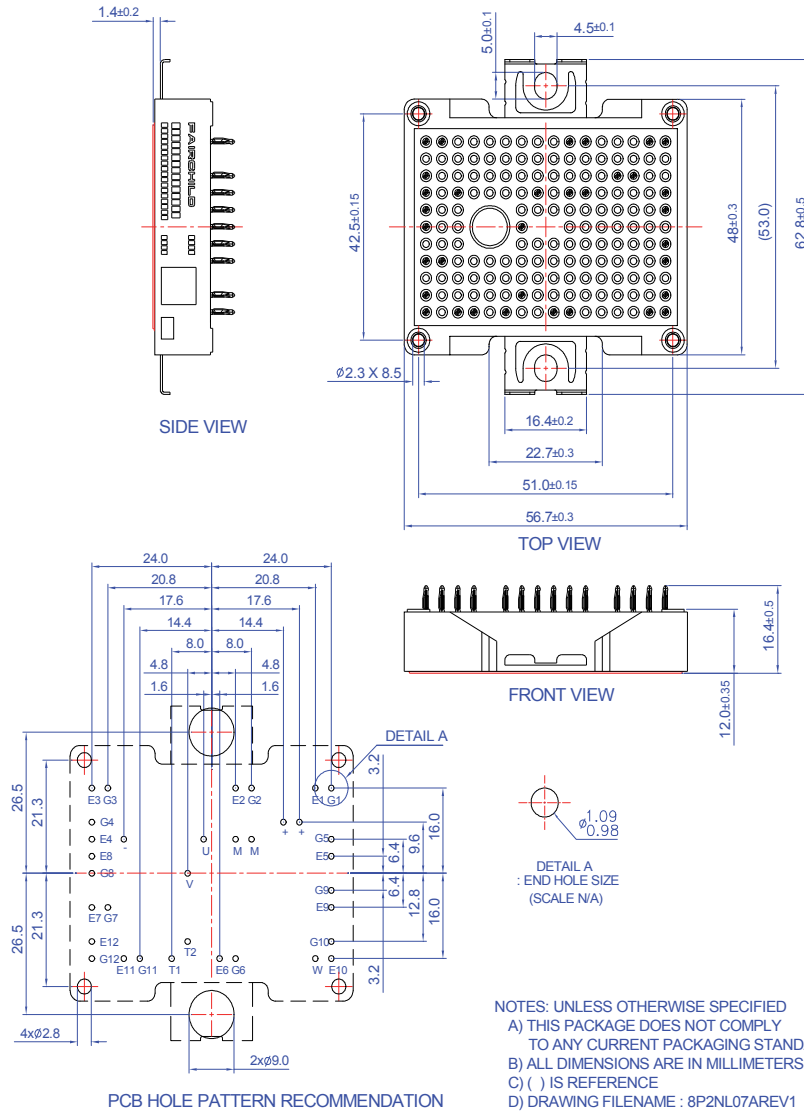
Fig 17. Reverse Recovery Energy vs. Gate Resistance - Diode **Fig 18. Transient Thermal Impedance - Diode**



Internal Circuit Diagram



Package Outlines [mm]



- PIN-GRID 3.2mm
 - TOLERANCE OF PCB HOLE PATTERN ± 0.1





TRADEMARKS

The following includes registered and unregistered trademarks and service marks, owned by Fairchild Semiconductor and/or its global subsidiaries, and is not intended to be an exhaustive list of all such trademarks.

- | | | | |
|--|--|---|---|
| AccuPower™ | F-PFS™ | OPTOPLANAR® |  SYSTEM GENERAL® |
| AttitudeEngine™ | FRFET® |  ® | TinyBoost® |
| Awinda® | Global Power Resource™ | Power Supply WebDesigner™ | TinyBuck® |
| AX-CAP®* | GreenBridge™ | PowerTrench® | TinyCalc™ |
| BitSiC™ | Green FPS™ | PowerXS™ | TinyLogic® |
| Build it Now™ | Green FPS™ e-Series™ | Programmable Active Droop™ | TINYOPTO™ |
| CorePLUS™ | Gmax™ | QFET® | TinyPower™ |
| CorePOWER™ | GTO™ | QS™ | TinyPWM™ |
| CROSSVOLT™ | IntelliMAX™ | Quiet Series™ | TinyWire™ |
| CTL™ | ISOPLANAR™ | RapidConfigure™ | TransiC™ |
| Current Transfer Logic™ | Making Small Speakers Sound Louder and Better™ |  ™ | TriFault Detect™ |
| DEUXPEED® | MegaBuck™ | Saving our world, 1mW/W/kW at a time™ | TRUECURRENT®* |
| Dual Cool™ | MICROCOUPLER™ | SignalWise™ | μSerDes™ |
| EcoSPARK® | MicroFET™ | SmartMax™ |  SerDes™ |
| EfficientMax™ | MicroPak™ | SMART START™ | UHC® |
| ESBC™ | MicroPak2™ | Solutions for Your Success™ | Ultra FRFET™ |
|  Fairchild® | MillerDrive™ | SPM® | UniFET™ |
| Fairchild Semiconductor® | MotionMax™ | STEALTH™ | VCX™ |
| FACT Quiet Series™ | MotionGrid® | SuperFET® | VisualMax™ |
| FACT® | MTI® | SuperSOT™-3 | VoltagePlus™ |
| FAST® | MTX® | SuperSOT™-6 | XS™ |
| FastvCore™ | MVN® | SuperSOT™-8 | Xsens™ |
| FETBench™ | mWSaver® | SupreMOS® | 仙童™ |
| FPS™ | OptoHiT™ | SyncFET™ | |
| | OPTOLOGIC® | Sync-Lock™ | |

* Trademarks of System General Corporation, used under license by Fairchild Semiconductor.

DISCLAIMER

FAIRCHILD SEMICONDUCTOR RESERVES THE RIGHT TO MAKE CHANGES WITHOUT FURTHER NOTICE TO ANY PRODUCTS HEREIN TO IMPROVE RELIABILITY, FUNCTION, OR DESIGN. TO OBTAIN THE LATEST, MOST UP-TO-DATE DATASHEET AND PRODUCT INFORMATION, VISIT OUR WEBSITE AT [HTTP://WWW.FAIRCHILDSEMI.COM](http://www.fairchildsemi.com). FAIRCHILD DOES NOT ASSUME ANY LIABILITY ARISING OUT OF THE APPLICATION OR USE OF ANY PRODUCT OR CIRCUIT DESCRIBED HEREIN; NEITHER DOES IT CONVEY ANY LICENSE UNDER ITS PATENT RIGHTS, NOR THE RIGHTS OF OTHERS. THESE SPECIFICATIONS DO NOT EXPAND THE TERMS OF FAIRCHILD'S WORLDWIDE TERMS AND CONDITIONS, SPECIFICALLY THE WARRANTY THEREIN, WHICH COVERS THESE PRODUCTS.

LIFE SUPPORT POLICY

FAIRCHILD'S PRODUCTS ARE NOT AUTHORIZED FOR USE AS CRITICAL COMPONENTS IN LIFE SUPPORT DEVICES OR SYSTEMS WITHOUT THE EXPRESS WRITTEN APPROVAL OF FAIRCHILD SEMICONDUCTOR CORPORATION.

As used herein:

1. Life support devices or systems are devices or systems which, (a) are intended for surgical implant into the body or (b) support or sustain life, and (c) whose failure to perform when properly used in accordance with instructions for use provided in the labeling, can be reasonably expected to result in a significant injury of the user.
2. A critical component in any component of a life support, device, or system whose failure to perform can be reasonably expected to cause the failure of the life support device or system, or to affect its safety or effectiveness.

ANTI-COUNTERFEITING POLICY

Fairchild Semiconductor Corporation's Anti-Counterfeiting Policy. Fairchild's Anti-Counterfeiting Policy is also stated on our external website, www.fairchildsemi.com, under Sales Support.

Counterfeiting of semiconductor parts is a growing problem in the industry. All manufacturers of semiconductor products are experiencing counterfeiting of their parts. Customers who inadvertently purchase counterfeit parts experience many problems such as loss of brand reputation, substandard performance, failed applications, and increased cost of production and manufacturing delays. Fairchild is taking strong measures to protect ourselves and our customers from the proliferation of counterfeit parts. Fairchild strongly encourages customers to purchase Fairchild parts either directly from Fairchild or from Authorized Fairchild Distributors who are listed by country on our web page cited above. Products customers buy either from Fairchild directly or from Authorized Fairchild Distributors are genuine parts, have full traceability, meet Fairchild's quality standards for handling and storage and provide access to Fairchild's full range of up-to-date technical and product information. Fairchild and our Authorized Distributors will stand behind all warranties and will appropriately address any warranty issues that may arise. Fairchild will not provide any warranty coverage or other assistance for parts bought from Unauthorized Sources. Fairchild is committed to combat this global problem and encourage our customers to do their part in stopping this practice by buying direct or from authorized distributors.

PRODUCT STATUS DEFINITIONS

Definition of Terms

Datasheet Identification	Product Status	Definition
Advance Information	Formative / In Design	Datasheet contains the design specifications for product development. Specifications may change in any manner without notice.
Preliminary	First Production	Datasheet contains preliminary data; supplementary data will be published at a later date. Fairchild Semiconductor reserves the right to make changes at any time without notice to improve design.
No Identification Needed	Full Production	Datasheet contains final specifications. Fairchild Semiconductor reserves the right to make changes at any time without notice to improve the design.
Obsolete	Not In Production	Datasheet contains specifications on a product that is discontinued by Fairchild Semiconductor. The datasheet is for reference information only.

Rev. I74

ON Semiconductor and  are trademarks of Semiconductor Components Industries, LLC dba ON Semiconductor or its subsidiaries in the United States and/or other countries. ON Semiconductor owns the rights to a number of patents, trademarks, copyrights, trade secrets, and other intellectual property. A listing of ON Semiconductor's product/patent coverage may be accessed at www.onsemi.com/site/pdf/Patent-Marking.pdf. ON Semiconductor reserves the right to make changes without further notice to any products herein. ON Semiconductor makes no warranty, representation or guarantee regarding the suitability of its products for any particular purpose, nor does ON Semiconductor assume any liability arising out of the application or use of any product or circuit, and specifically disclaims any and all liability, including without limitation special, consequential or incidental damages. Buyer is responsible for its products and applications using ON Semiconductor products, including compliance with all laws, regulations and safety requirements or standards, regardless of any support or applications information provided by ON Semiconductor. "Typical" parameters which may be provided in ON Semiconductor data sheets and/or specifications can and do vary in different applications and actual performance may vary over time. All operating parameters, including "Typicals" must be validated for each customer application by customer's technical experts. ON Semiconductor does not convey any license under its patent rights nor the rights of others. ON Semiconductor products are not designed, intended, or authorized for use as a critical component in life support systems or any FDA Class 3 medical devices or medical devices with a same or similar classification in a foreign jurisdiction or any devices intended for implantation in the human body. Should Buyer purchase or use ON Semiconductor products for any such unintended or unauthorized application, Buyer shall indemnify and hold ON Semiconductor and its officers, employees, subsidiaries, affiliates, and distributors harmless against all claims, costs, damages, and expenses, and reasonable attorney fees arising out of, directly or indirectly, any claim of personal injury or death associated with such unintended or unauthorized use, even if such claim alleges that ON Semiconductor was negligent regarding the design or manufacture of the part. ON Semiconductor is an Equal Opportunity/Affirmative Action Employer. This literature is subject to all applicable copyright laws and is not for resale in any manner.

PUBLICATION ORDERING INFORMATION

LITERATURE FULFILLMENT:

Literature Distribution Center for ON Semiconductor
19521 E. 32nd Pkwy, Aurora, Colorado 80011 USA
Phone: 303-675-2175 or 800-344-3860 Toll Free USA/Canada
Fax: 303-675-2176 or 800-344-3867 Toll Free USA/Canada
Email: orderlit@onsemi.com

N. American Technical Support: 800-282-9855 Toll Free
USA/Canada
Europe, Middle East and Africa Technical Support:
Phone: 421 33 790 2910
Japan Customer Focus Center
Phone: 81-3-5817-1050

ON Semiconductor Website: www.onsemi.com
Order Literature: <http://www.onsemi.com/orderlit>
For additional information, please contact your local
Sales Representative

Mouser Electronics

Authorized Distributor

Click to View Pricing, Inventory, Delivery & Lifecycle Information:

[ON Semiconductor:](#)

[FPF2C8P2NL07A](#)

Данный компонент на территории Российской Федерации

Вы можете приобрести в компании MosChip.

Для оперативного оформления запроса Вам необходимо перейти по данной ссылке:

<http://moschip.ru/get-element>

Вы можете разместить у нас заказ для любого Вашего проекта, будь то серийное производство или разработка единичного прибора.

В нашем ассортименте представлены ведущие мировые производители активных и пассивных электронных компонентов.

Нашей специализацией является поставка электронной компонентной базы двойного назначения, продукции таких производителей как XILINX, Intel (ex.ALTERA), Vicor, Microchip, Texas Instruments, Analog Devices, Mini-Circuits, Amphenol, Glenair.

Сотрудничество с глобальными дистрибьюторами электронных компонентов, предоставляет возможность заказывать и получать с международных складов практически любой перечень компонентов в оптимальные для Вас сроки.

На всех этапах разработки и производства наши партнеры могут получить квалифицированную поддержку опытных инженеров.

Система менеджмента качества компании отвечает требованиям в соответствии с ГОСТ Р ИСО 9001, ГОСТ РВ 0015-002 и ЭС РД 009

Офис по работе с юридическими лицами:

105318, г.Москва, ул.Щербаковская д.3, офис 1107, 1118, ДЦ «Щербаковский»

Телефон: +7 495 668-12-70 (многоканальный)

Факс: +7 495 668-12-70 (доб.304)

E-mail: info@moschip.ru

Skype отдела продаж:

moschip.ru

moschip.ru_4

moschip.ru_6

moschip.ru_9