

## LOW VOLTAGE AUDIO POWER AMPLIFIER

### ■ GENERAL DESCRIPTION

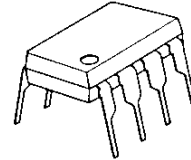
The **NJM2149** is an audio power amplifier designed for telephone applications.

No external coupling capacitors are required because of the differential outputs. The closed loop gain is adjusted by two external resistors, and a CD pin permit powering down with muting the input signal.

The **NJM2149** improves the tern noise reduction in switching Power Down mode and external high band noise reduction, compared with **NJM2135**.

It is suitable for portable telephone , wireless telephone, button telephone, and other speaker amplifier applications.

### ■ PACKAGE OUTLENE



NJM2149D



NJM2149M



NJM2149V



NJM2149R

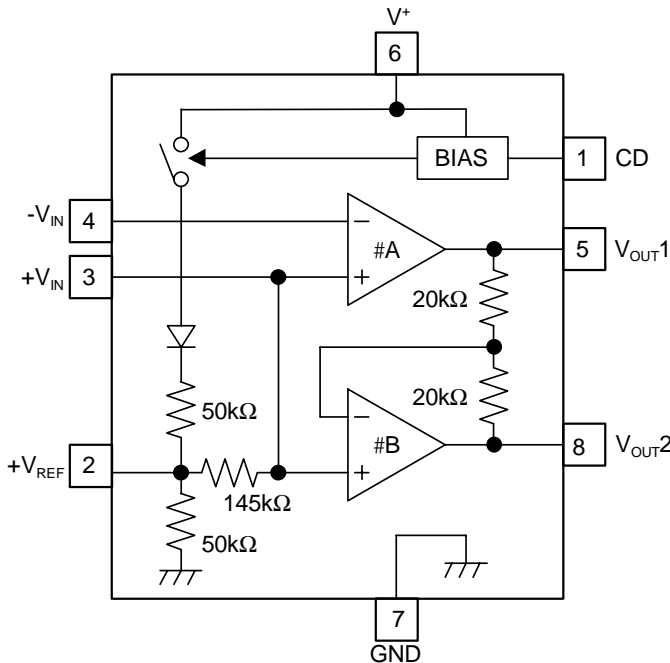


NJM2149RB1

### ■ FEATURES

- Operating Voltage +2 - +6V
- Operating Current 2.2mA typ., at  $V^+=3V$
- Supply Current in Power Down Mode 0.1 $\mu$ A typ
- Output Power Exceeds 250mW  $V^+=6V, R_L=32\Omega$
- Gain Range GVD=0-43dB, Voise Band
- Load Impedance  $R_L=8-200\Omega$
- Bipolar Technology
- Package Outline DIP8, DMP8, SSOP8, VSP8, TVSP8

### ■ PIN CONFIGURATION



### PIN FUNCTION

1. CD
2. +V<sub>REF</sub>
3. +V<sub>IN</sub>
4. -V<sub>IN</sub>
5. V<sub>OUT1</sub>
6. V<sup>+</sup>
7. GND
8. V<sub>OUT2</sub>

**■ ABSOLUTE MAXIMUM RANGE**

(Ta=25°C)

PARAMETER	SYMBOL	RATINGS	UNIT
Supply Voltage	V <sup>+</sup>	+7	V
Power Dissipation	P <sub>D</sub>	(DIP8) 500 (DMP8) 500 (note1) (SSOP8) 360 (note1) (VSP8/TVSP8) 320	mW
Operating Temperature Range	Topr	-40 to +85	°C
Storage Temperature Range	Tstg	-40 to +125	°C

(note1) Mounted on PC Board

**■ ELECTRICAL CHARACTERISTICS**

 (V<sup>+</sup>=6.0V, 1pin=2V, Ta=25°C unless otherwise specified)

PARAMETER	SYMBOL	TEST CONDITIONS	MIN.	TYP.	MAX.	UNIT
Operating Voltage	V <sup>+</sup>		2.0	-	6.0	V
Operating Current	I <sub>CC</sub>	V <sup>+</sup> =3.0V, R <sub>L</sub> =∞, No Signal	-	2.2	3.5	mA
Operating Current at Power Down Mode	I <sub>CCD</sub>	V <sup>+</sup> =3.0V, R <sub>L</sub> =∞, 1pin=0.8V, No Signal	-	0.1	1.0	μA
Open Loop Gain	A <sub>V1</sub>	Amp#A, f<100Hz	84	90	-	dB
Closed Loop Gain	A <sub>V2</sub>	Amp#B, f=1kHz, R <sub>L</sub> =32Ω	-0.35	0	+0.35	dB
Output Power	P <sub>O1</sub>	V <sup>+</sup> =3.0V, R <sub>L</sub> =16Ω, THD≤10% (note2)	55	-	-	mW
	P <sub>O2</sub>	V <sup>+</sup> =6.0V, R <sub>L</sub> =32Ω, THD≤10% (note2)	250	-	-	mW
Total Harmonic Distortion	THD1	V <sup>+</sup> =6V, R <sub>L</sub> =32Ω, P <sub>O</sub> =125mW, f=1kHz, G <sub>VD</sub> =34dB	-	0.5	1.0	%
	THD2	V <sup>+</sup> ≥3V, R <sub>L</sub> =8Ω, P <sub>O</sub> =20mW, f=1kHz, G <sub>VD</sub> =12dB	-	0.5	-	%
Power Supply Rejection Ratio (V <sup>+</sup> =3.0V-6.0V)	SVR1	C1=∞, C2=0.01μF, DC	50	-	-	dB
	SVR2	C1=0.1μF, C2=0, f=1kHz	-	12	-	dB
	SVR3	C1=1.0μF, C2=5.0μF, f=1kHz	-	47	-	dB
Mute Attenuation	MAT	f=1kHz-20kHz, 1pin=0.8V	-	70	-	dB
Output Voltage (R <sub>f</sub> =75kΩ, DC)	V <sub>O1</sub>	V <sup>+</sup> =3.0V, R <sub>L</sub> =16Ω	1.00	1.15	1.25	V
	V <sub>O2</sub>	V <sup>+</sup> =6.0V	-	2.60	-	V
Output High Level	V <sub>OH</sub>	I <sub>OUT</sub> =-75mA, V <sup>+</sup> =2.0-6.0V	-	V <sup>+</sup> -1.1	-	V
Output Low Level	V <sub>OL</sub>	I <sub>OUT</sub> =75mA, V <sup>+</sup> =2.0-6.0V	-30	0.21	-	V
Output DC Offset	ΔV <sub>O</sub>	R <sub>f</sub> =75kΩ, R <sub>L</sub> =32Ω, 5pin-8pin	-30	0	+30	mV
Input Bias Current	I <sub>B</sub>	4pin	-	0	-200	nA
Equivalent Resistance	R <sub>+IN</sub>	3pin	100	170	220	kΩ
	R <sub>REF</sub>	2pin	18	26	40	kΩ
CD Input Voltage H	V <sub>CDH</sub>	1pin	2.0	-	V <sup>+</sup>	V
CD Input Voltage L	V <sub>CDL</sub>	1pin	0.0	-	0.8	V
CD Input Resistance	R <sub>CD</sub>	V <sup>+</sup> =V <sub>CD</sub> =6.0V, 1pin	50	85	175	kΩ

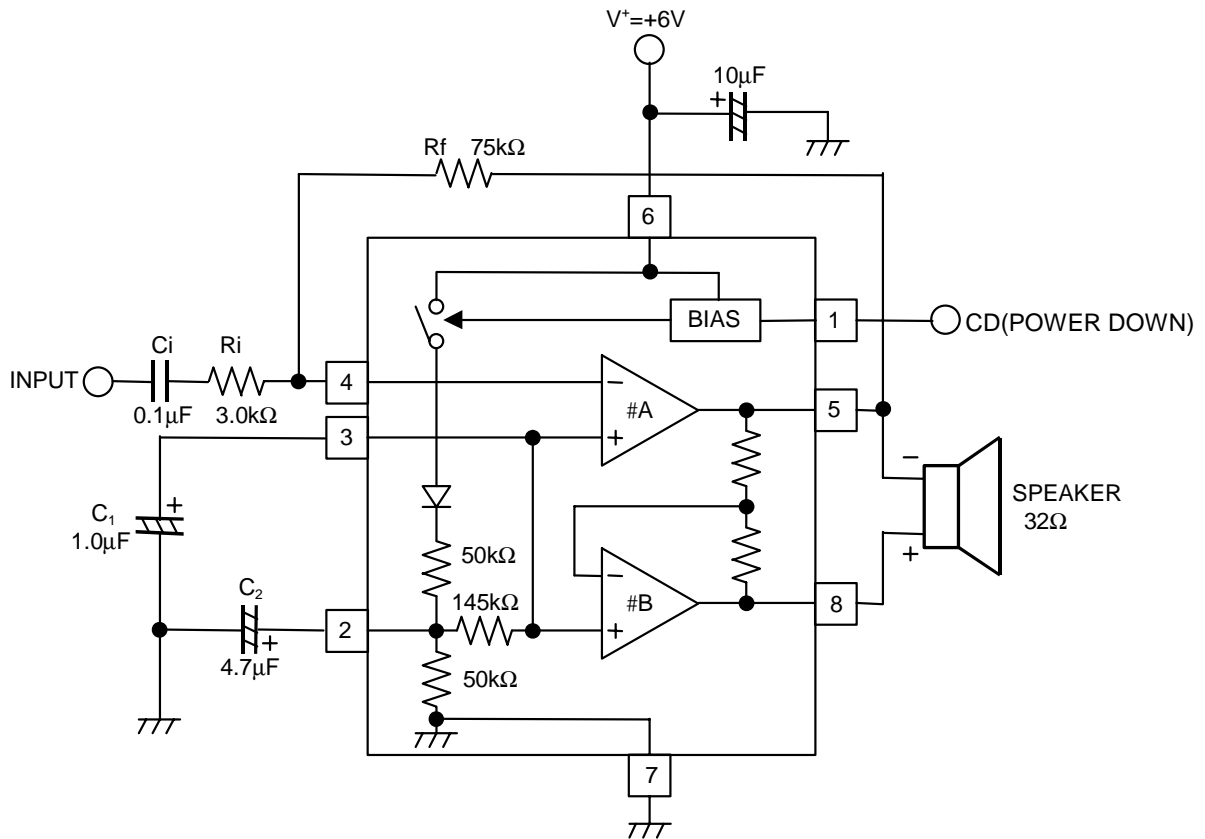
(note2) NJM2149M, NJM2149V, NJM2149R, NJM2149RB1: Mounted on PC Board

**■ CONTROL TERMINAL EXPLANATION**

CHIP DISABLE CONTROL (CD PIN)

PARAMETER	CONTROL SIGNAL	STATUS
CD OFF	H(=V <sub>CDH</sub> )	IC is active.
CD ON	L(=V <sub>CDL</sub> )	IC is standby. (with Mute)

APPLICATION CURCUIT



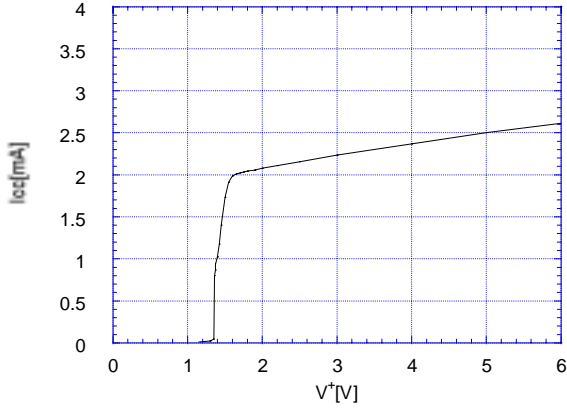
- note:1.The CD terminal(1pin) should connect High level(>2.0V), when NJM2149 is active.  
 The standby mode, when the CD terminal is Low level(<0.8V).  
 2.To add the C1 and C2 capacitor, the power-supply-rejection-ratio will be improved.  
 When C1 is large value, C2 will be unnecessary.  
 3.The power-up time depend on the C1 and C2 capacitor.  
 4.The input current of CD terminal is as shown below figure.



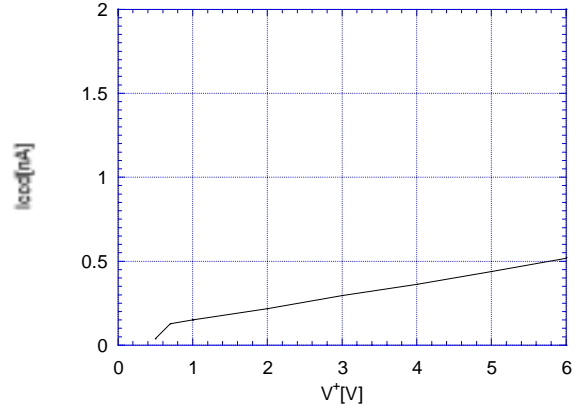
- 5.No connect oscillation-protect RC required.  
 To connect oscillation-protect RC, if the NJM2149 oscillate with PC board/stray capacitor/long speaker wire and others condition.

■ TYPICAL CHARACTERISTICS

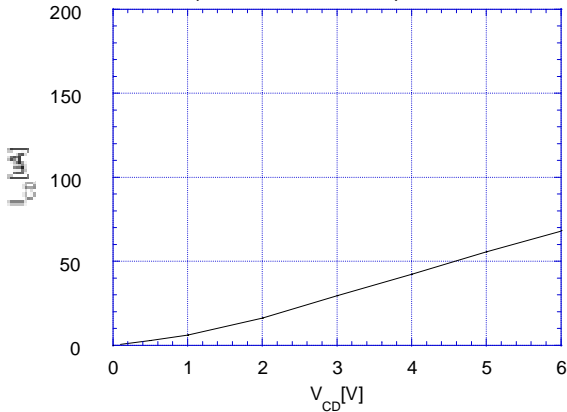
Operating Current vs. Operating Voltage  
( $V_{CD}=V^+$ ,  $T_a=25^\circ\text{C}$ )



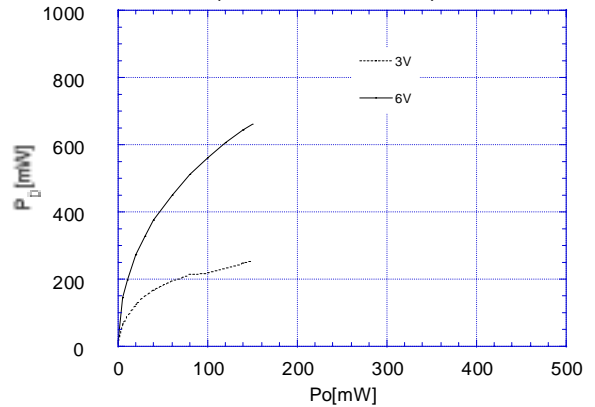
Standby Current vs. Operating Voltage  
( $V_{CD}=\text{GND}$ ,  $T_a=25^\circ\text{C}$ )



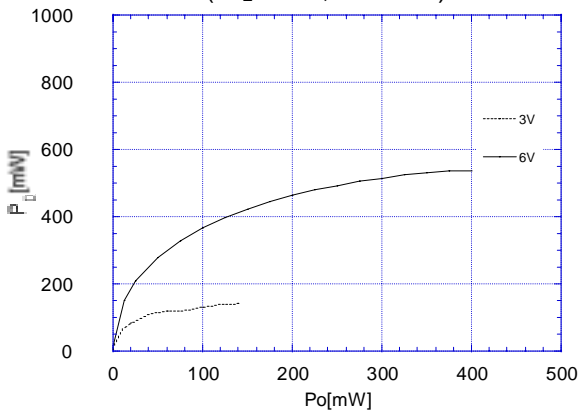
CD Sink Current vs. CD Voltage  
( $V^+=6\text{V}$ ,  $T_a=25^\circ\text{C}$ )



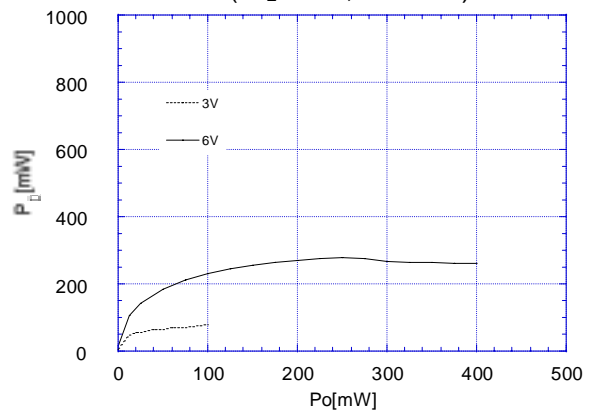
Power Dissipation vs. Output Power  
( $R_L=8\Omega$ ,  $T_a=25^\circ\text{C}$ )



Power Dissipation vs. Output Power  
( $R_L=16\Omega$ ,  $T_a=25^\circ\text{C}$ )

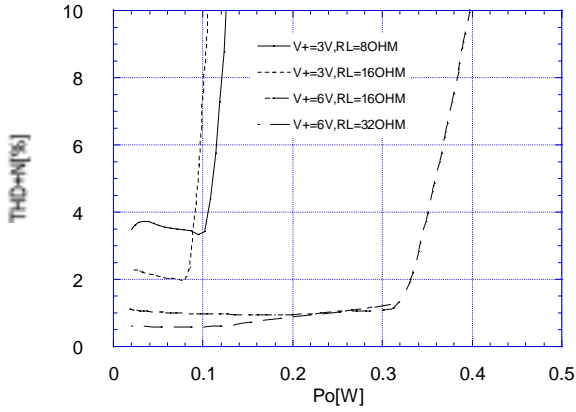


Power Dissipation vs. Output Power  
( $R_L=32\Omega$ ,  $T_a=25^\circ\text{C}$ )

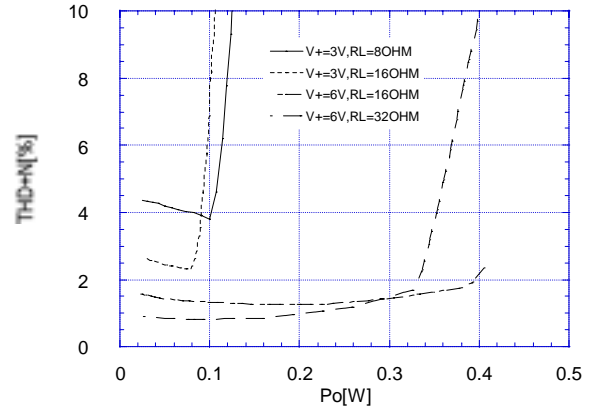


## TYPICAL CHARACTERISTICS

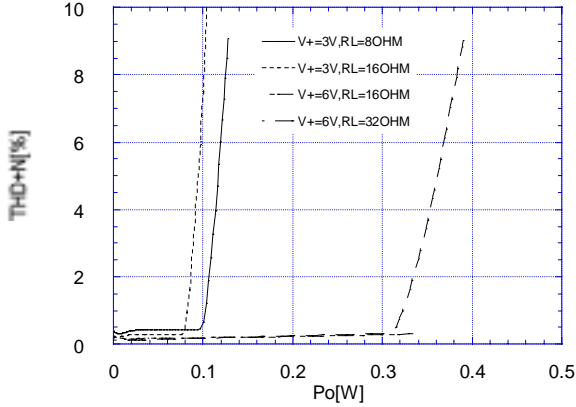
Total Harmonic Distortion vs. Output Power  
( $f=1\text{kHz}$ ,  $G_{VD}=34\text{dB}$ ,  $T_a=25^\circ\text{C}$ )



Total Harmonic Distortion vs. Output Power  
( $f=3\text{kHz}$ ,  $G_{VD}=34\text{dB}$ ,  $T_a=25^\circ\text{C}$ )



Total Harmonic Distortion vs. Output Power  
( $f=1.3\text{kHz}$ ,  $G_{VD}=12\text{dB}$ ,  $T_a=25^\circ\text{C}$ )



Maximum Output Swing vs. Load Current  
( $V^+$  Side,  $V^+=6\text{V}$ ,  $T_a=25^\circ\text{C}$ )

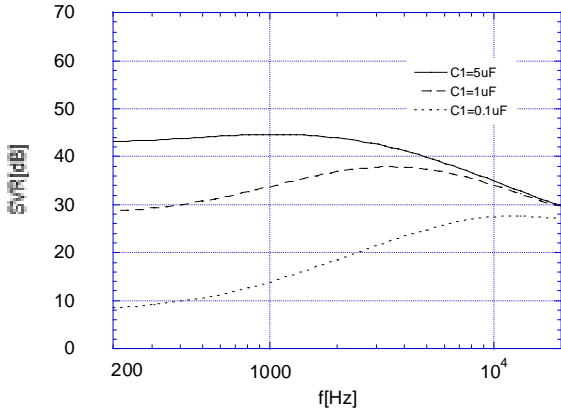


Maximum Output Swing vs. Load Current  
(GND Side,  $V^+=6\text{V}$ ,  $T_a=25^\circ\text{C}$ )



■ TYPICAL CHARACTERISTICS

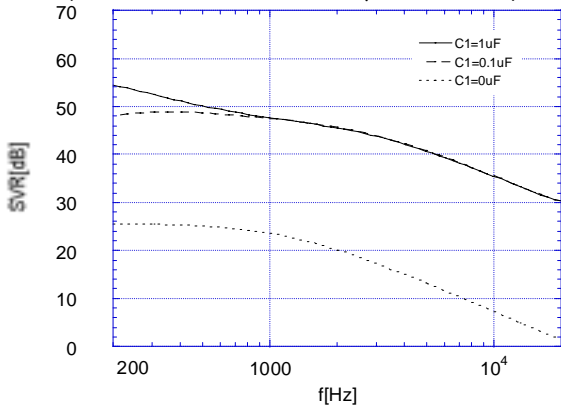
Supply Voltage Rejection Ratio vs. Frequency  
( $V^+=6V, G_{VD}=34dB, C_2=0\mu F, T_a=25^\circ C$ )



Supply Voltage Rejection Ratio vs. Frequency  
( $V^+=6V, G_{VD}=34dB, C_2=1\mu F, T_a=25^\circ C$ )



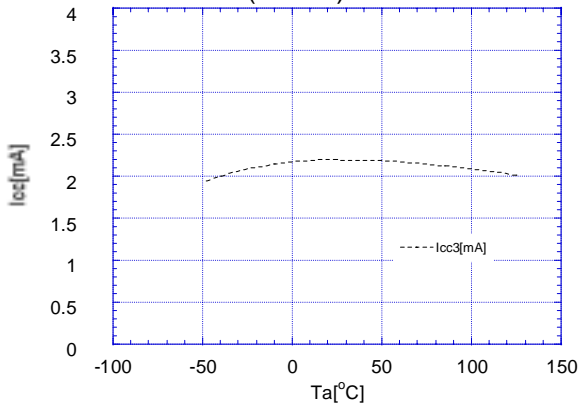
Supply Voltage Rejection Ratio vs. Frequency  
( $V^+=6V, G_{VD}=34dB, C_2=5\mu F, T_a=25^\circ C$ )



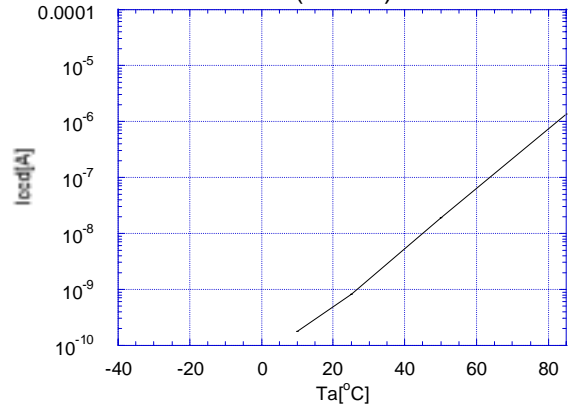
Supply Voltage Rejection Ratio vs. Frequency  
( $V^+=6V, G_{VD}=34dB, C_2=10\mu F, T_a=25^\circ C$ )



Operating Current vs. Temperature  
( $V^+=6V$ )



Standby Current vs. Temperature  
( $V^+=6V$ )



■ TYPICAL CHARACTERISTICS

Output Offset Voltage vs. Temperature  
( $V^+ = 6V$ )



Output Power vs. Temperature  
( $V^+ = 6V$ )



MEMO

[CAUTION]  
The specifications on this databook are only given for information, without any guarantee as regards either mistakes or omissions. The application circuits in this databook are described only to show representative usages of the product and not intended for the guarantee or permission of any right

# Mouser Electronics

Authorized Distributor

Click to View Pricing, Inventory, Delivery & Lifecycle Information:

[NJR:](#)

[NJM2149D](#) [NJM2149M](#) [NJM2149RB1-TE1](#) [NJM2149V-TE2](#) [NJM2149V-TE1](#) [NJM2149R-TE1](#) [NJM2149R-TE2](#)  
[NJM2149M-TE2](#) [NJM2149M-TE1](#) [NJM2149RB1-TE2](#)



## Данный компонент на территории Российской Федерации

### Вы можете приобрести в компании MosChip.

Для оперативного оформления запроса Вам необходимо перейти по данной ссылке:

<http://moschip.ru/get-element>

Вы можете разместить у нас заказ для любого Вашего проекта, будь то серийное производство или разработка единичного прибора.

В нашем ассортименте представлены ведущие мировые производители активных и пассивных электронных компонентов.

Нашей специализацией является поставка электронной компонентной базы двойного назначения, продукции таких производителей как XILINX, Intel (ex.ALTERA), Vicor, Microchip, Texas Instruments, Analog Devices, Mini-Circuits, Amphenol, Glenair.

Сотрудничество с глобальными дистрибьюторами электронных компонентов, предоставляет возможность заказывать и получать с международных складов практически любой перечень компонентов в оптимальные для Вас сроки.

На всех этапах разработки и производства наши партнеры могут получить квалифицированную поддержку опытных инженеров.

Система менеджмента качества компании отвечает требованиям в соответствии с ГОСТ Р ИСО 9001, ГОСТ РВ 0015-002 и ЭС РД 009

### Офис по работе с юридическими лицами:

105318, г.Москва, ул.Щербаковская д.3, офис 1107, 1118, ДЦ «Щербаковский»

Телефон: +7 495 668-12-70 (многоканальный)

Факс: +7 495 668-12-70 (доб.304)

E-mail: [info@moschip.ru](mailto:info@moschip.ru)

Skype отдела продаж:

moschip.ru

moschip.ru\_4

moschip.ru\_6

moschip.ru\_9