

1

2

3

4

5

6

A

A

B

B

C

C

D

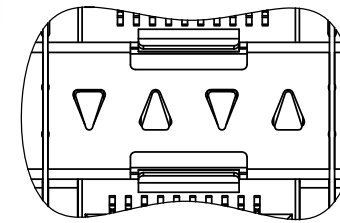
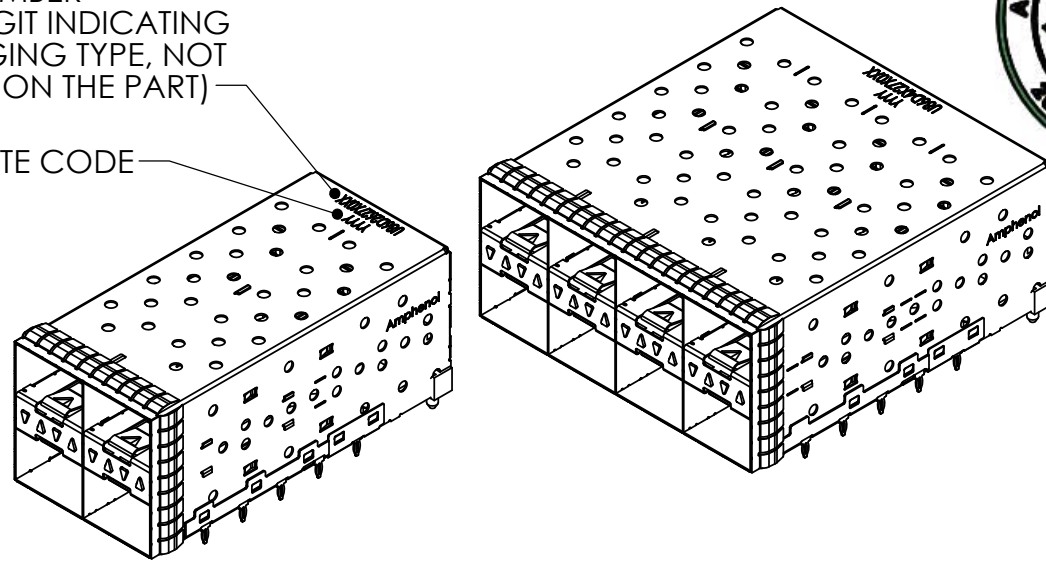
REVISIONS

| REV. | ECN | DESCRIPTION | DATE | APPROVED |
|------|-----|-------------|------------|----------|
| A | | PROPOSAL | AUG.30, 11 | J.SI |
| B | | PROPOSAL | MAY.15, 13 | J.SI |

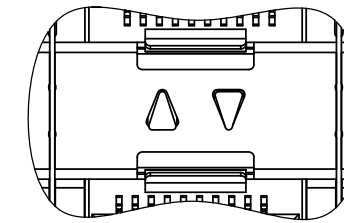


PART NUMBER
(LAST DIGIT INDICATING
PACKAGING TYPE, NOT
PRINTED ON THE PART)

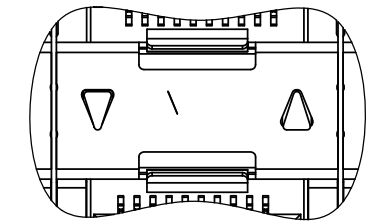
DATE CODE



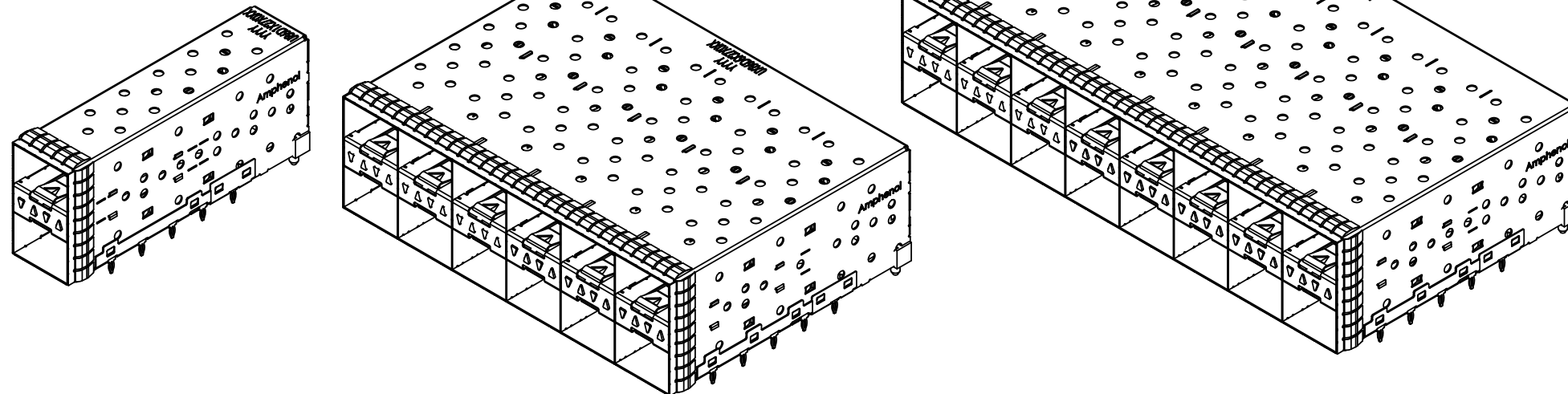
UE86-DX627-10XX1
4 LIGHT PIPES PER 2X1



UE86-DX627-20XX1
2 INNER LIGHT PIPES
PER 2X1



UE86-DX627-30XX1
2 OUTER LIGHT PIPES
PER 2X1



MATERIAL: (RoHS COMPLIANT)

CAGE - PRESS FIT:
COPPER ALLOY

PLATING:
SEE AMPHENOL PART NUMBER
CONFIGURATION FOR OPTIONS.

CONNECTOR - PRESS FIT:

PLASTIC HOUSING:
LCP, FLAMMABILITY RATING UL94-0.

CONTACTS:
PHOSPHOR BRONZE
PLATING OPTION: NICKEL 2.54 µm MIN.

LIGHT PIPE:
CLEAR POLYCARBONATE, FLAMMABILITY
RATING UL94-0.

PACKAGING:
TRAY PACKAGING.

TEMPERATURE RANGE:
-40°C TO +85°C

AMPHENOL PART NUMBER CONFIGURATION

UE86 - D X 6 2 7 - X 0 X X 1

NUMBER OF PORTS

- 1 = 2X1
- 2 = 2X2
- 4 = 2X4
- 6 = 2X6
- 8 = 2X8

LIGHT PIPE CONFIGURATION

- 1 = 4 LIGHT PIPES PER 2X1
- 2 = 2 INNER LIGHT PIPES PER 2X1
- 3 = 2 OUTER LIGHT PIPES PER 2X1

PACKAGING

- 1 = TRAY

CAGE PLATING

- 2 = NICKEL
- 3 = MATTE TIN

PRESS FIT CONNECTOR PLATING

- 3 = 0.76 µm MIN. GOLD ON MATING AREA
3.81-7.62 µm MATTE TIN ON TERMINATION
- 6 = 0.38 µm MIN. GOLD ON MATING AREA
3.81-7.62 µm MATTE TIN ON TERMINATION

2XN SFP+ EXPRESSPORT™ COMBO
WITH LIGHT PIPE
(SPRING FINGER GASKET)

DO NOT SCALE DRAWING

THIS DOCUMENT CONTAINS PROPRIETARY INFORMATION AND SUCH INFORMATION MAY NOT BE DISCLOSED TO OTHERS FOR ANY PURPOSE OR USED FOR MANUFACTURING PURPOSES WITHOUT PERMISSION FROM AMPHENOL CANADA CORP.

| | | | | | |
|--|-----------|-----------|---------|--|--|
| UNLESS OTHERWISE SPECIFIED DIMENSIONS ARE IN MILLIMETERS TOLERANCES ARE: | | APPROVALS | DATE | Amphenol High Speed Interconnects A Division of Amphenol Corp. www.amphenol-highspeed.com | |
| DECIMALS | ANGLES | | | | |
| X.X ± 0.25 | ± 1° | DRAWN | ERIC.Z | AUG.30, 11 | TITLE |
| X.XX ± 0.15 | | DESIGNED | | | 2XN SFP+ EXPRESSPORT™ COMBO WITH LIGHT PIPE (SPRING FINGER GASKET) |
| MATERIAL AND FINISH | SEE NOTES | CHECKED | ChigowX | AUG.30, 11 | |
| REF. | X | QA APP'D | | | SIZE A4 DWG. NO. P-UE86-DX627-X0XX1 REV. B |
| CODE IDENT. NO. | 03554 | IE APP'D | | | SCALE 2:3 PROJECT SHEET 1 OF 8 |
| | | DWG APP'D | J.SI | AUG.30, 11 | |

1

2

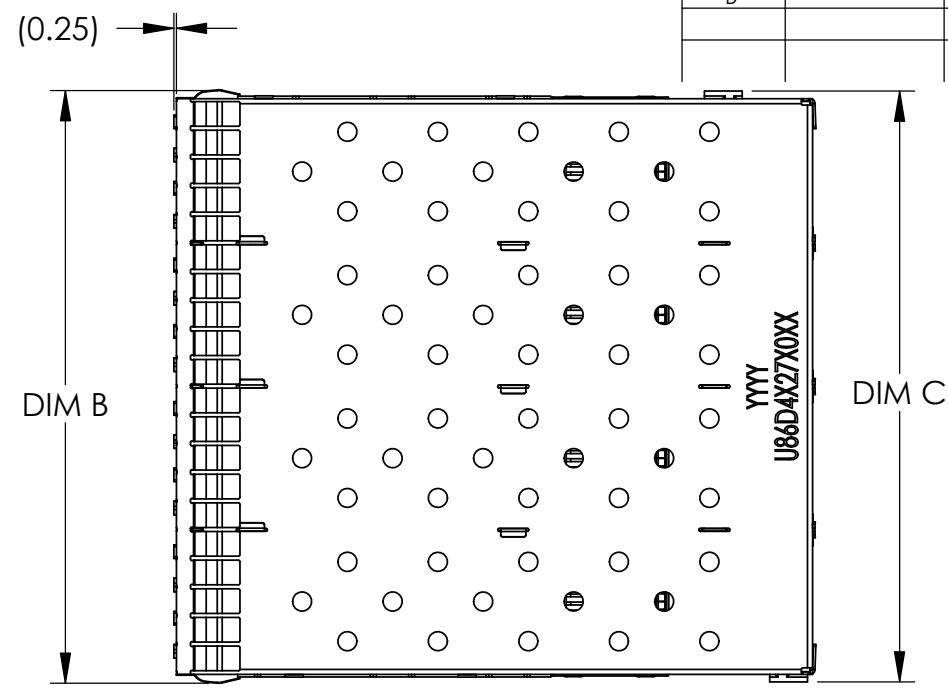
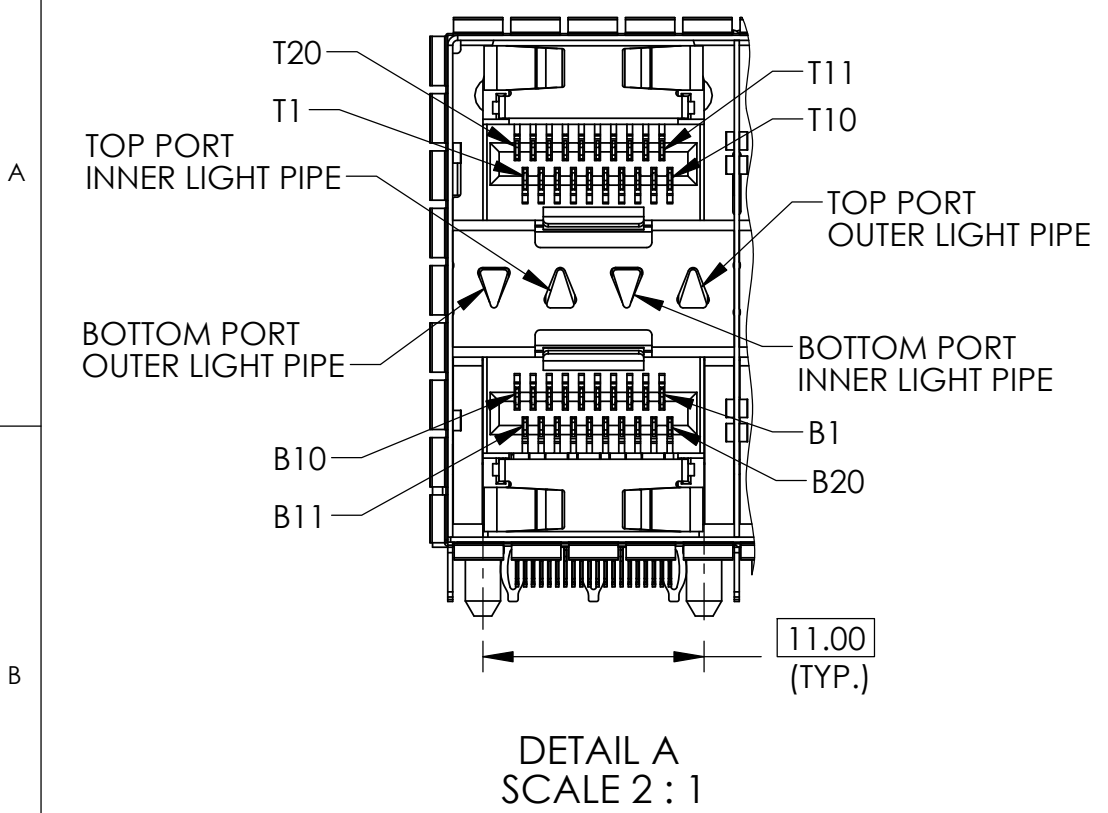
3

4

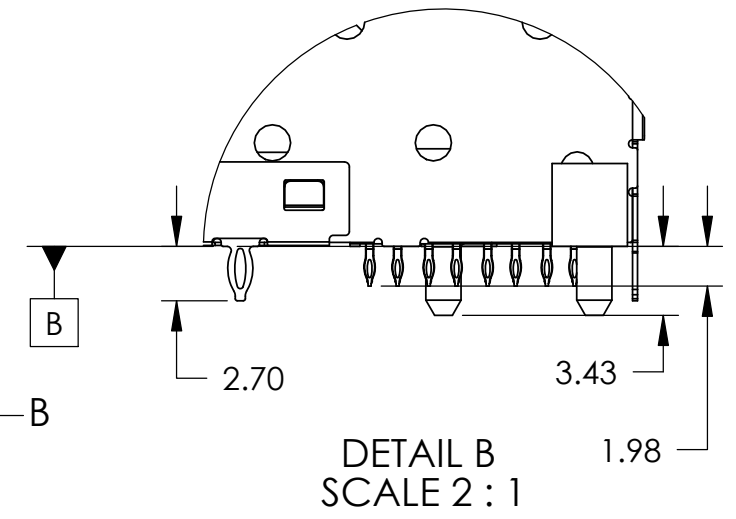
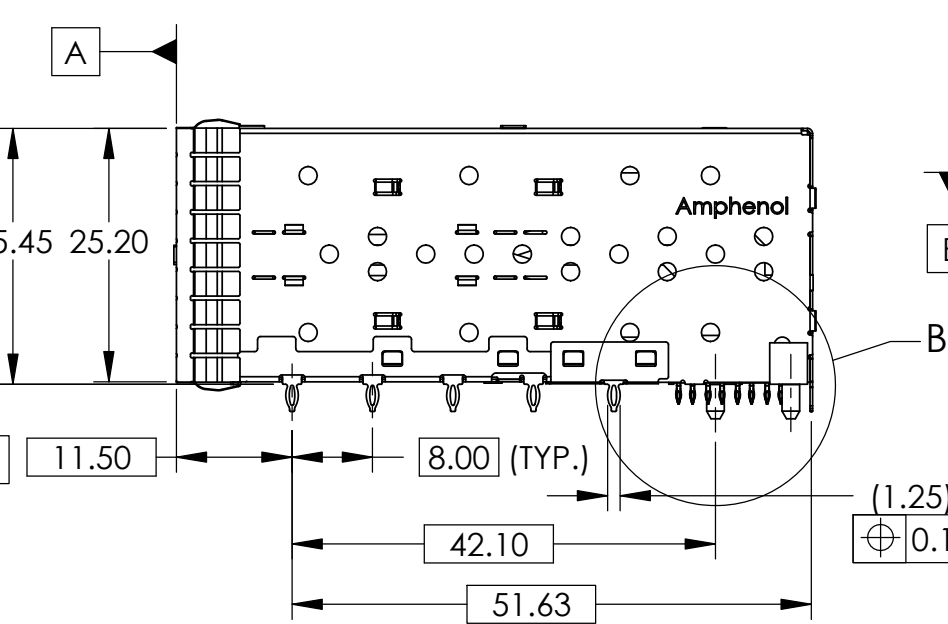
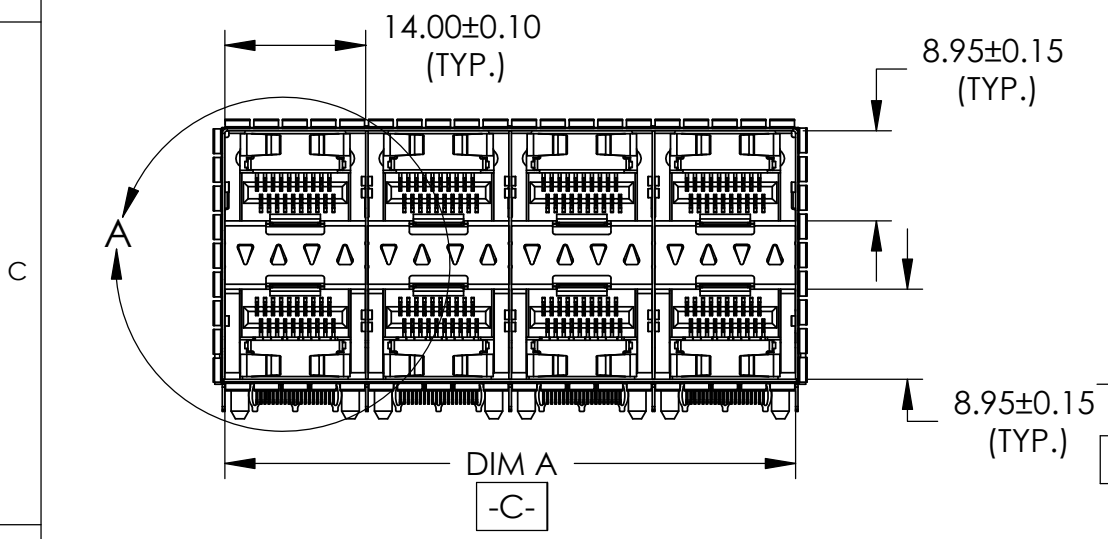
5

6

| REVISIONS | | | | |
|-----------|-----|-------------|------------|----------|
| REV. | ECN | DESCRIPTION | DATE | APPROVED |
| A | | PROPOSAL | AUG.30, 11 | J.SI |
| B | | PROPOSAL | MAY.15, 13 | J.SI |



| SFP COMBO | DIM A | DIM B | DIM C |
|-----------|--------|--------|--------|
| 2X1 SFP | 14.00 | 16.25 | 16.00 |
| 2X2 SFP | 28.25 | 30.50 | 30.25 |
| 2X4 SFP | 56.75 | 59.00 | 58.75 |
| 2X6 SFP | 85.25 | 87.50 | 87.25 |
| 2X8 SFP | 113.75 | 116.00 | 115.75 |



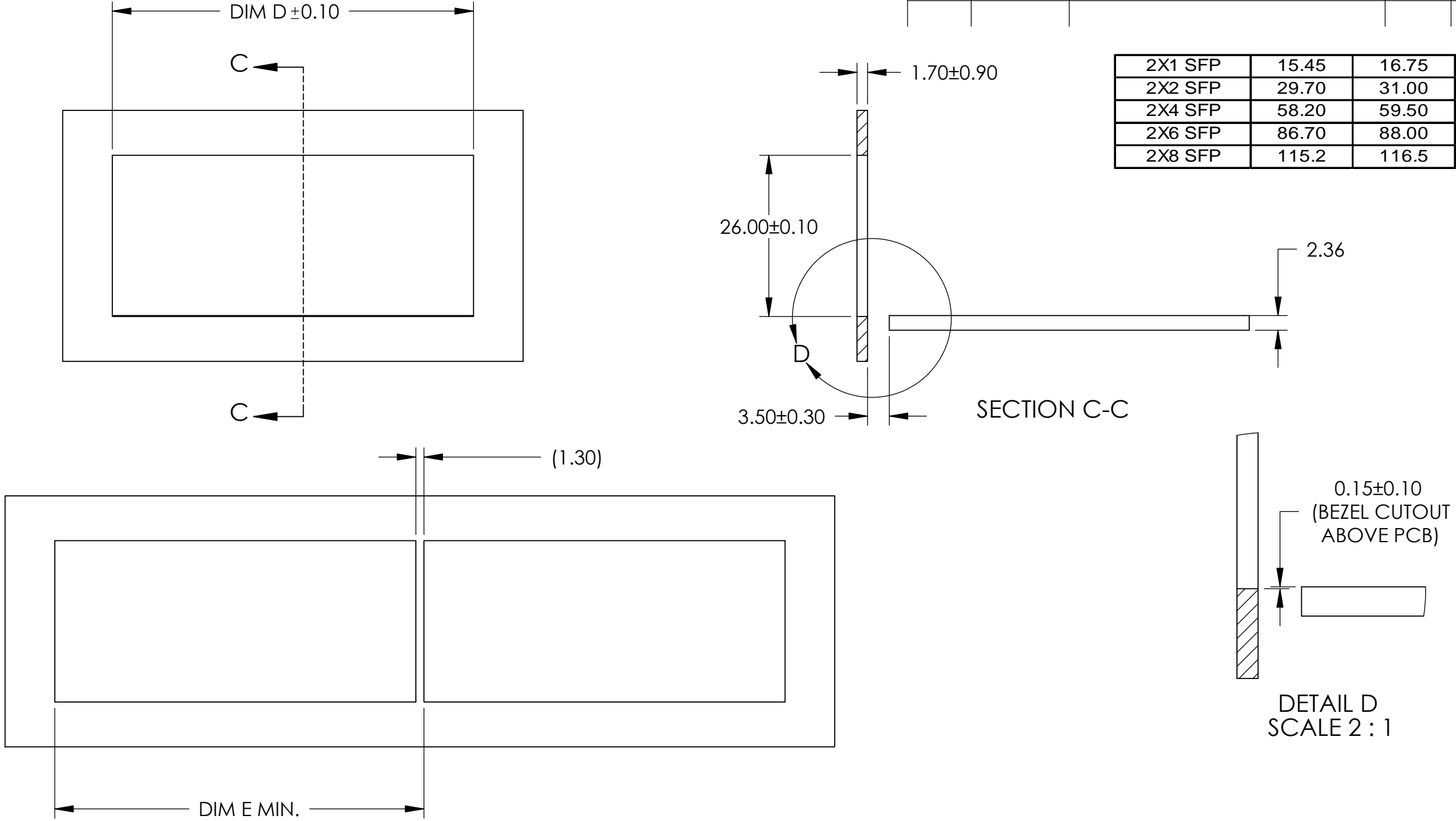
(1.25) (TYP.)
⊕ 0.10 (M) C (M) A B

DO NOT SCALE DRAWING
THIS DOCUMENT CONTAINS PROPRIETARY INFORMATION AND SUCH INFORMATION MAY NOT BE DISCLOSED TO OTHERS FOR ANY PURPOSE OR USED FOR MANUFACTURING PURPOSES WITHOUT PERMISSION FROM AMPHENOL CANADA CORP.

| | | | | |
|---|------------------|---------|-------------|---|
| UNLESS OTHERWISE SPECIFIED DIMENSIONS ARE IN MILLIMETERS TOLERANCES ARE: DECIMALS ANGLES X.X ± 0.25 ± 1° X.XX ± 0.15 | APPROVALS | | DATE | Amphenol High Speed Interconnects A Division of Amphenol Corp. www.amphenol-highspeed.com |
| | DRAWN | ERIC.Z | AUG.30, 11 | |
| | DESIGNED | | | |
| | CHECKED | ChigowX | AUG.30, 11 | |
| MATERIAL AND FINISH | SEE NOTES | | QA APP'D | TITLE 2XN SFP+ EXPRESSPORT™ COMBO WITH LIGHT PIPE (SPRING FINGER GASKET) |
| REF. | X | | IE APP'D | |
| CODE IDENT. NO. | 03554 | | DWG APP'D | |
| | | J.SI | AUG.30, 11 | SIZE A4 DWG. NO. P-UE86-DX627-X0XX1 REV. B |
| | | | | SCALE 1:1 PROJECT SHEET 2 OF 8 |

| REVISIONS | | | | |
|-----------|-----|-------------|------------|----------|
| REV. | ECN | DESCRIPTION | DATE | APPROVED |
| A | | PROPOSAL | AUG.30, 11 | J.SI |
| B | | PROPOSAL | MAY.15, 13 | J.SI |

| | | |
|---------|-------|-------|
| 2X1 SFP | 15.45 | 16.75 |
| 2X2 SFP | 29.70 | 31.00 |
| 2X4 SFP | 58.20 | 59.50 |
| 2X6 SFP | 86.70 | 88.00 |
| 2X8 SFP | 115.2 | 116.5 |

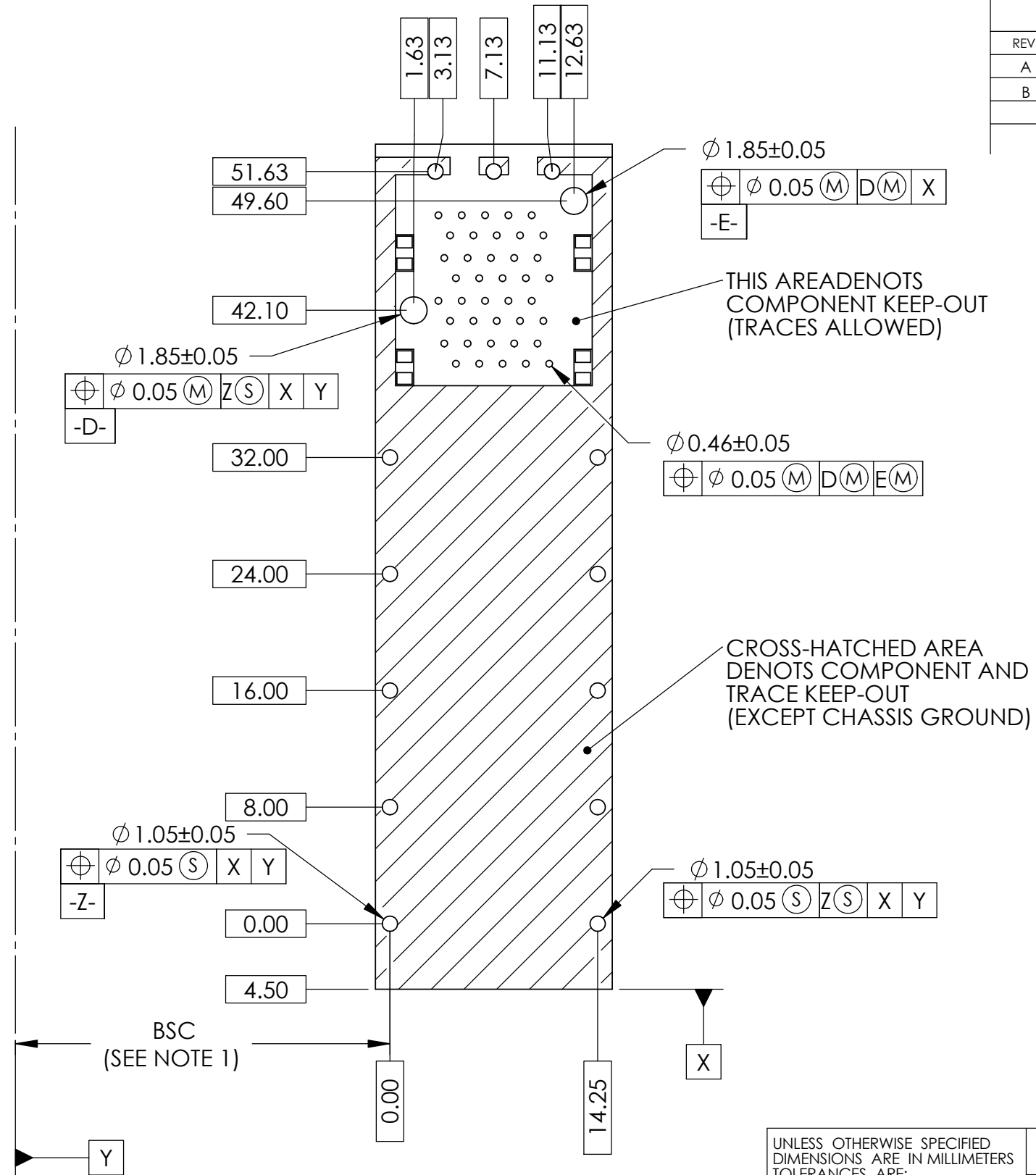


| | | | | | | | | |
|---|------------------|-----------|--------------------------------|---|--------------|---------|-----------|-----------------|
| UNLESS OTHERWISE SPECIFIED DIMENSIONS ARE IN MILLIMETERS TOLERANCES ARE: DECIMALS ANGLES X.X ± 0.25 ± 1° X.XX ± 0.15 | APPROVALS | | DATE | Amphenol High Speed Interconnects A Division of Amphenol Corp. www.amphenol-highspeed.com | | | | |
| | DRAWN | ERIC.Z | AUG.30, 11 | | | | | |
| | DESIGNED | | | | | | | |
| | CHECKED | ChigowX | AUG.30, 11 | | | | | |
| MATERIAL AND FINISH | SEE NOTES | | QA APP'D | TITLE 2XN SFP+ EXPRESSPORT™ COMBO WITH LIGHT PIPE (SPRING FINGER GASKET) | | | | |
| REF. | X | IE APP'D | SIZE A4 | | | | | |
| CODE IDENT. NO. | 03554 | DWG APP'D | DWG. NO. P-UE86-DX627-X0XX1 | | | | | |
| | | | J.SI | AUG.30, 11 | SCALE 1:1 | PROJECT | REV. B | SHEET 3 OF 8 |

DO NOT SCALE DRAWING

THIS DOCUMENT CONTAINS PROPRIETARY INFORMATION AND SUCH INFORMATION MAY NOT BE DISCLOSED TO OTHERS FOR ANY PURPOSE OR USED FOR MANUFACTURING PURPOSES WITHOUT PERMISSION FROM AMPHENOL CANADA CORP.

| REVISIONS | | | | |
|-----------|-----|-------------|------------|----------|
| REV. | ECN | DESCRIPTION | DATE | APPROVED |
| A | | PROPOSAL | AUG.30, 11 | J.SI |
| B | | PROPOSAL | MAY.15, 13 | J.SI |



- NOTES:
- DATUM AND BASIC DIMENSIONS ESTABLISHED BY CUSTOMER.
 - 1.05 mm DIAMETER HOLES ARE CHASSIS GROUND (13 HOLES).

2X1 PCB LAYOUT

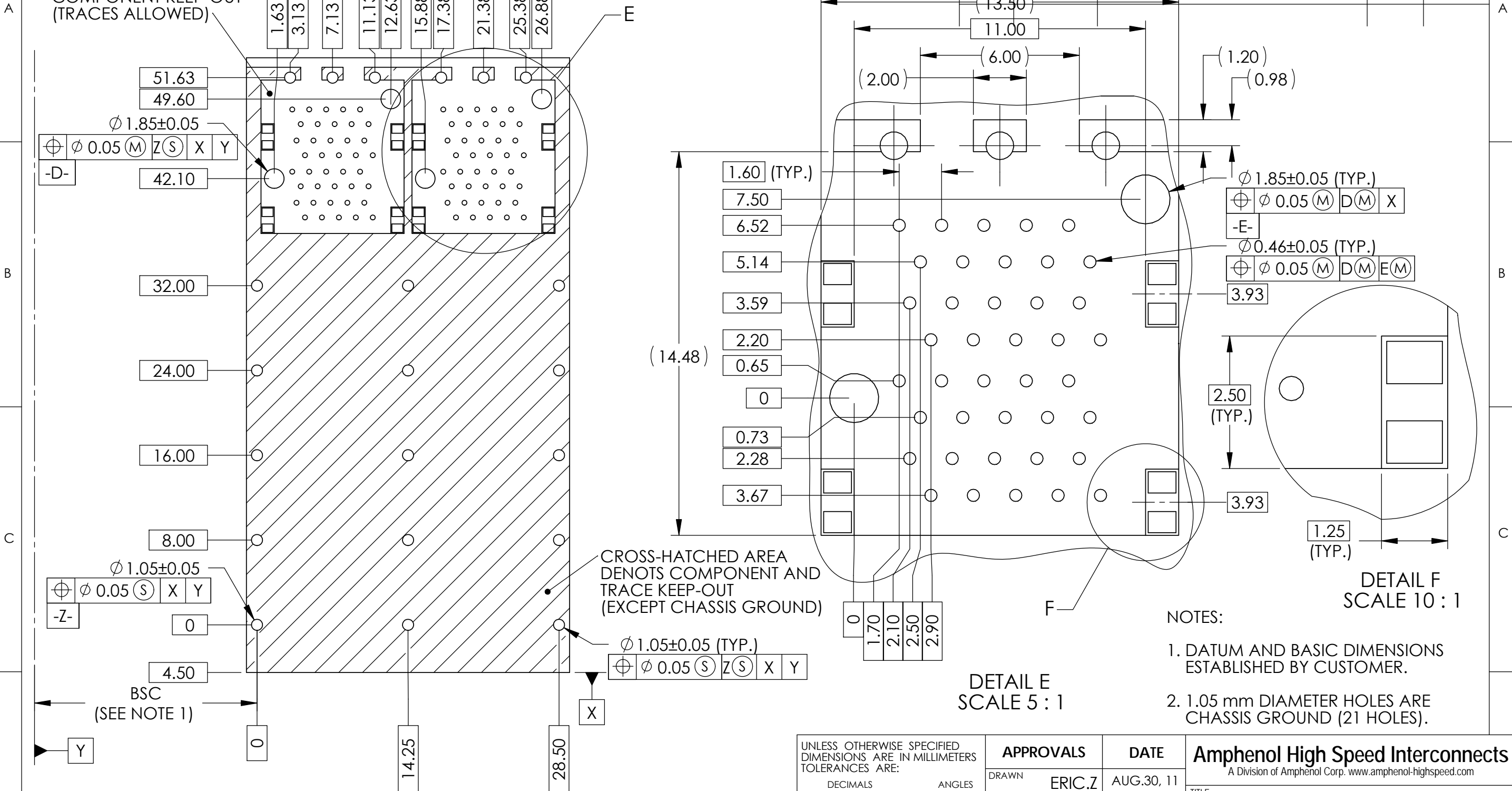
DO NOT SCALE DRAWING

THIS DOCUMENT CONTAINS PROPRIETARY INFORMATION AND SUCH INFORMATION MAY NOT BE DISCLOSED TO OTHERS FOR ANY PURPOSE OR USED FOR MANUFACTURING PURPOSES WITHOUT PERMISSION FROM AMPHENOL CANADA CORP.

| | | | | | | |
|---|------------------|-----------|-------------|---|----------|--------|
| UNLESS OTHERWISE SPECIFIED DIMENSIONS ARE IN MILLIMETERS TOLERANCES ARE: DECIMALS ANGLES X.X ± 0.25 ± 1° X.XX ± 0.15 | APPROVALS | | DATE | Amphenol High Speed Interconnects A Division of Amphenol Corp. www.amphenol-highspeed.com | | |
| | DRAWN | ERIC.Z | AUG.30, 11 | TITLE 2XN SFP+ EXPRESSPORT™ COMBO WITH LIGHT PIPE (SPRING FINGER GASKET) | | |
| | DESIGNED | | | | | |
| | CHECKED | ChigowX | AUG.30, 11 | SIZE | DWG. NO. | REV. |
| MATERIAL AND FINISH | SEE NOTES | QA APP'D | A4 | P-UE86-DX627-X0XX1 | B | |
| REF. | X | IE APP'D | | SCALE | PROJECT | SHEET |
| CODE IDENT. NO. | 03554 | DWG APP'D | J.SI | AUG.30, 11 | 2:1 | 4 OF 8 |

| REVISIONS | | | | |
|-----------|-----|-------------|------------|----------|
| REV. | ECN | DESCRIPTION | DATE | APPROVED |
| A | | PROPOSAL | AUG.30, 11 | J.SI |
| B | | PROPOSAL | MAY.15, 13 | J.SI |

THIS AREA DENOTES COMPONENT KEEP-OUT (TRACES ALLOWED)



**2X2 PCB LAYOUT
DO NOT SCALE DRAWING**

THIS DOCUMENT CONTAINS PROPRIETARY INFORMATION AND SUCH INFORMATION MAY NOT BE DISCLOSED TO OTHERS FOR ANY PURPOSE OR USED FOR MANUFACTURING PURPOSES WITHOUT PERMISSION FROM AMPHENOL CANADA CORP.

DETAIL E
SCALE 5 : 1

DETAIL F
SCALE 10 : 1

- NOTES:
- DATUM AND BASIC DIMENSIONS ESTABLISHED BY CUSTOMER.
 - 1.05 mm DIAMETER HOLES ARE CHASSIS GROUND (21 HOLES).

| | | | | |
|---|-----------|-----------|-----------------|---|
| UNLESS OTHERWISE SPECIFIED DIMENSIONS ARE IN MILLIMETERS TOLERANCES ARE: DECIMALS ANGLES X.X ± 0.25 ± 1° X.XX ± 0.15 | APPROVALS | | DATE | Amphenol High Speed Interconnects A Division of Amphenol Corp. www.amphenol-highspeed.com TITLE 2XN SFP+ EXPRESSPORT™ COMBO WITH LIGHT PIPE (SPRING FINGER GASKET) SIZE A4 DWG. NO. P-UE86-DX627-X0XX1 REV. B SCALE 2:1 PROJECT SHEET 5 OF 8 |
| | DRAWN | ERIC.Z | AUG.30, 11 | |
| | DESIGNED | | | |
| | CHECKED | ChigowX | AUG.30, 11 | |
| MATERIAL AND FINISH | SEE NOTES | | QA APPD | |
| REF. | X | IE APP'D | | |
| CODE IDENT. NO. | 03554 | DWG APP'D | J.SI AUG.30, 11 | |

THIS AREA DENOTES COMPONENT KEEP-OUT (TRACES ALLOWED)

REVISIONS

| REV. | ECN | DESCRIPTION | DATE | APPROVED |
|------|-----|-------------|------------|----------|
| A | | PROPOSAL | AUG.30, 11 | J.SI |
| B | | PROPOSAL | MAY.15, 13 | J.SI |

NOTES:

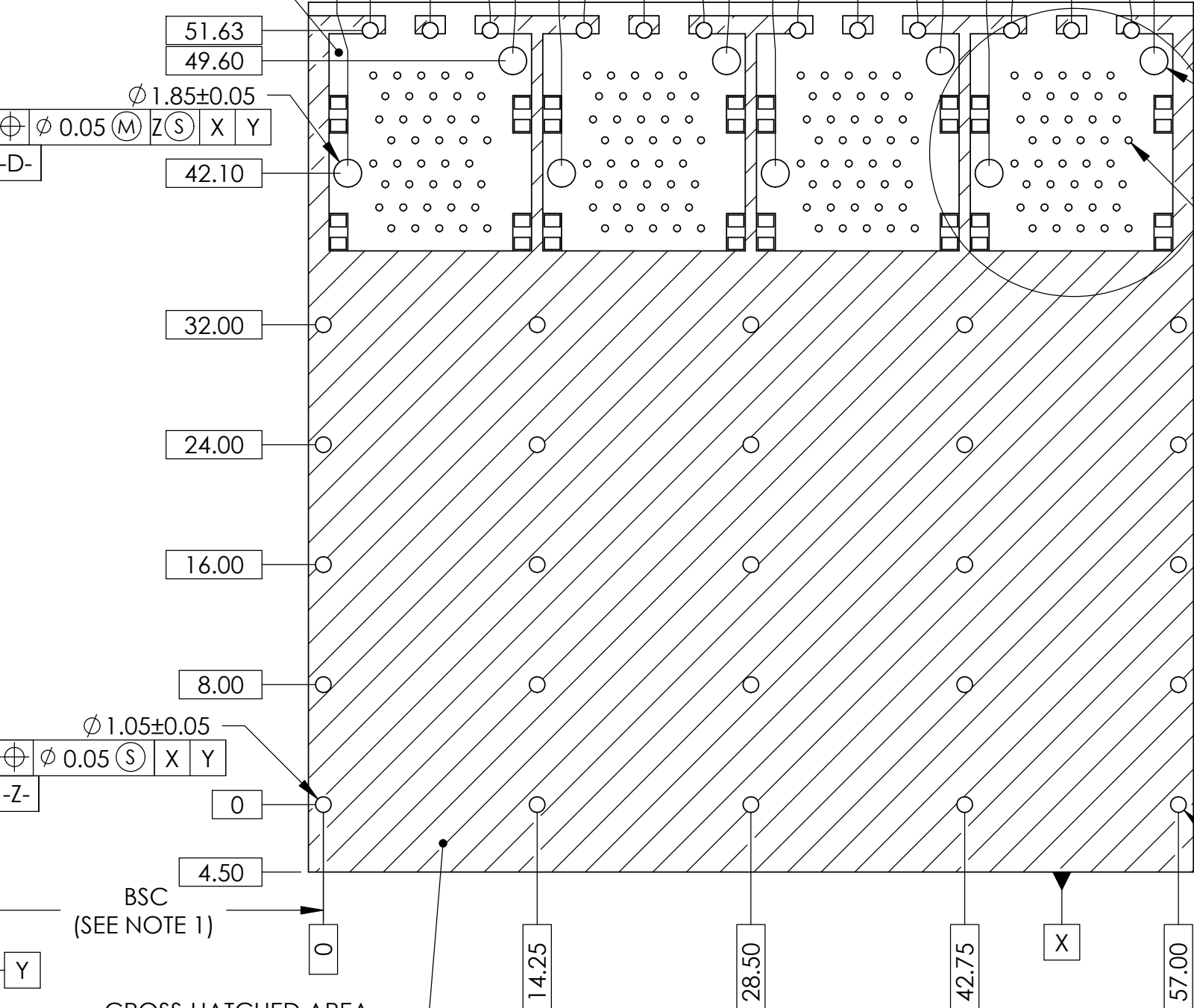
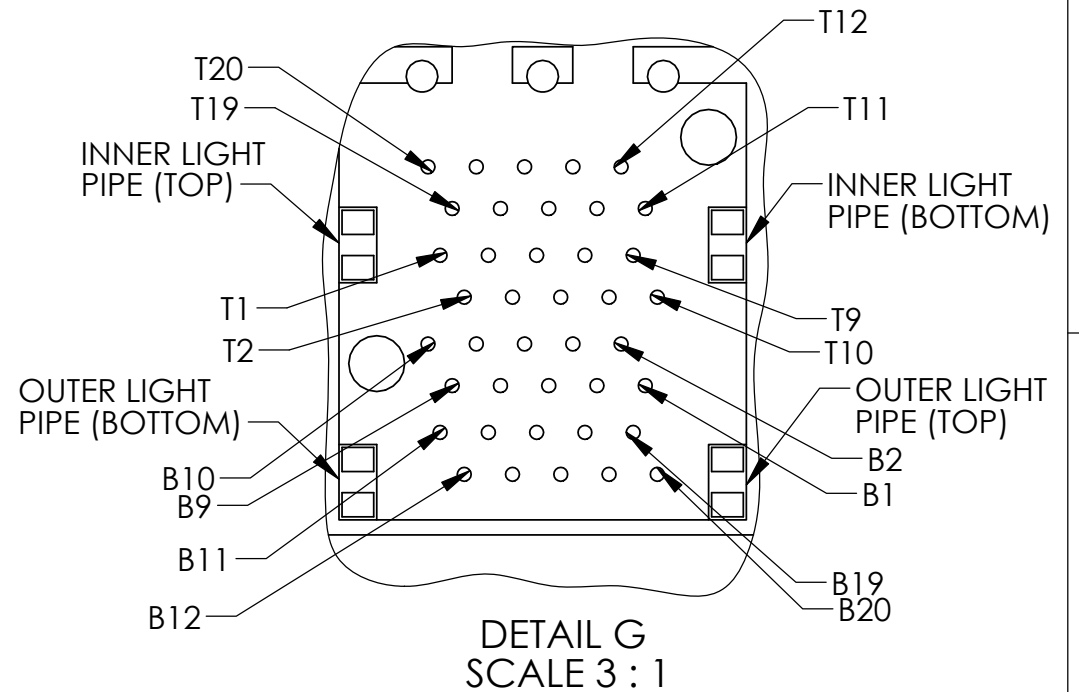
- DATUM AND BASIC DIMENSIONS ESTABLISHED BY CUSTOMER.
- 1.05 mm DIAMETER HOLES ARE CHASSIS GROUND (37 HOLES).

$\phi 1.85 \pm 0.05$ (TYP.)

| | | | | |
|-----------------|---|---|---|---|
| $\phi 0.05$ (M) | Z | S | X | Y |
| -D- | | | | |

$\phi 0.46 \pm 0.05$ (TYP.)

| | | | | |
|-----------------|---|---|---|---|
| $\phi 0.05$ (M) | D | M | E | M |
| -E- | | | | |



CROSS-HATCHED AREA DENOTES COMPONENT AND TRACE KEEP-OUT (EXCEPT CHASSIS GROUND)

DO NOT SCALE DRAWING

THIS DOCUMENT CONTAINS PROPRIETARY INFORMATION AND SUCH INFORMATION MAY NOT BE DISCLOSED TO OTHERS FOR ANY PURPOSE OR USED FOR MANUFACTURING PURPOSES WITHOUT PERMISSION FROM AMPHENOL CANADA CORP.

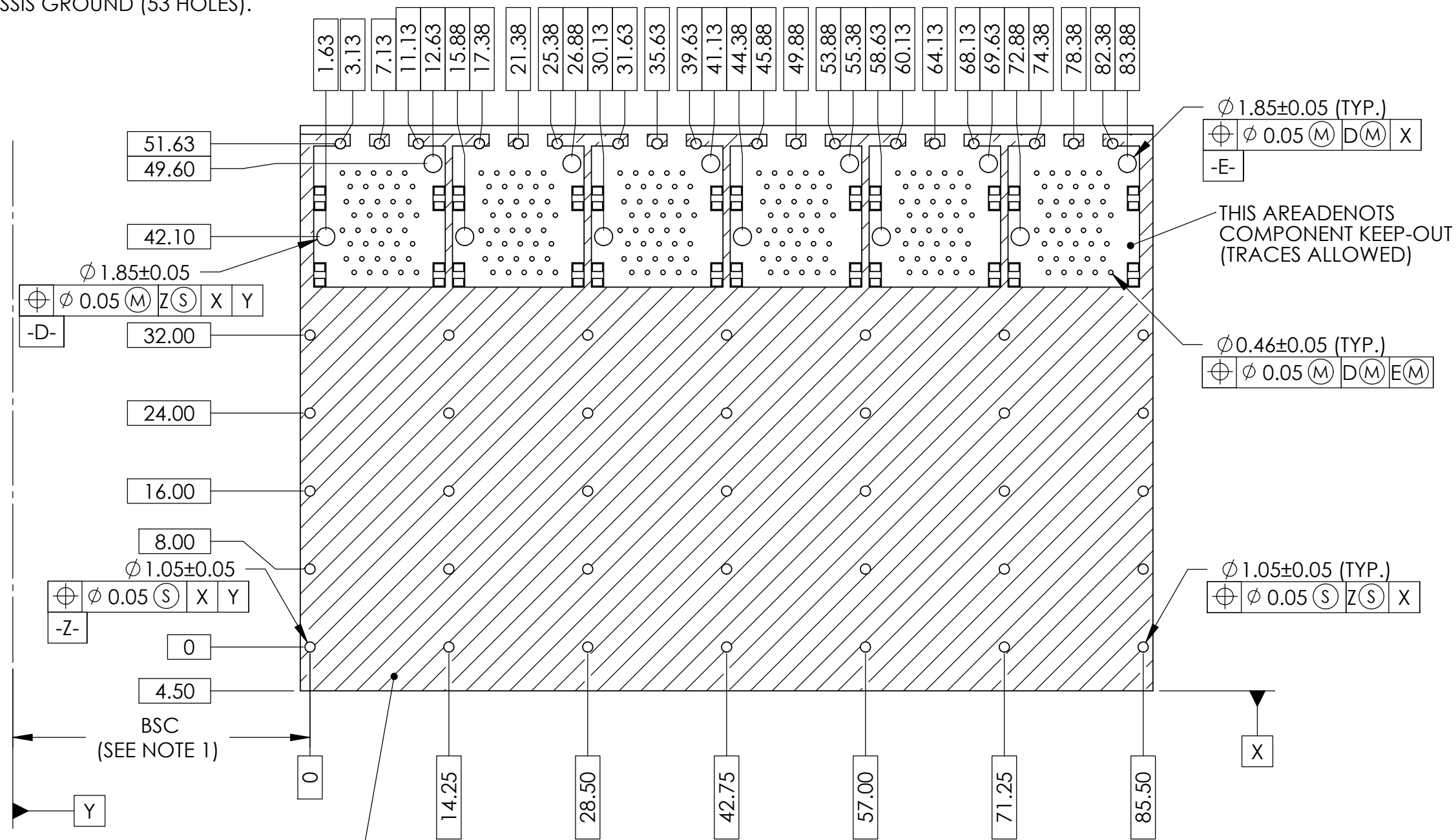
| | | | | |
|---|-----------------|------------|--|------------------------------------|
| UNLESS OTHERWISE SPECIFIED DIMENSIONS ARE IN MILLIMETERS TOLERANCES ARE: DECIMALS X.X ± 0.25 X.XX ± 0.15 ANGLES ± 1° | APPROVALS | DATE | Amphenol High Speed Interconnects A Division of Amphenol Corp. www.amphenol-highspeed.com | |
| | DRAWN ERIC.Z | AUG.30, 11 | TITLE | |
| MATERIAL AND FINISH SEE NOTES | CHECKED ChigowX | AUG.30, 11 | 2XN SFP+ EXPRESSPORT™ COMBO WITH LIGHT PIPE (SPRING FINGER GASKET) | |
| REF. X | QA APP'D | | SIZE A4 | DWG. NO. P-UE86-DX627-X0XX1 REV. B |
| CODE IDENT. NO. 03554 | DWG APP'D J.SI | AUG.30, 11 | SCALE 2:1 | PROJECT SHEET 6 OF 8 |

NOTES:

1. DATUM AND BASIC DIMENSIONS ESTABLISHED BY CUSTOMER.

2. 1.05 mm DIAMETER HOLES ARE CHASSIS GROUND (53 HOLES).

| REVISIONS | | | | |
|-----------|-----|-------------|------------|----------|
| REV. | ECN | DESCRIPTION | DATE | APPROVED |
| A | | PROPOSAL | AUG.30, 11 | J.SI |
| B | | PROPOSAL | MAY.15, 13 | J.SI |



CROSS-HATCHED AREA DENOTS COMPONENT AND TRACE KEEP-OUT (EXCEPT CHASSIS GROUND)

2X6 PCB LAYOUT

DO NOT SCALE DRAWING

THIS DOCUMENT CONTAINS PROPRIETARY INFORMATION AND SUCH INFORMATION MAY NOT BE DISCLOSED TO OTHERS FOR ANY PURPOSE OR USED FOR MANUFACTURING PURPOSES WITHOUT PERMISSION FROM AMPHENOL CANADA CORP.

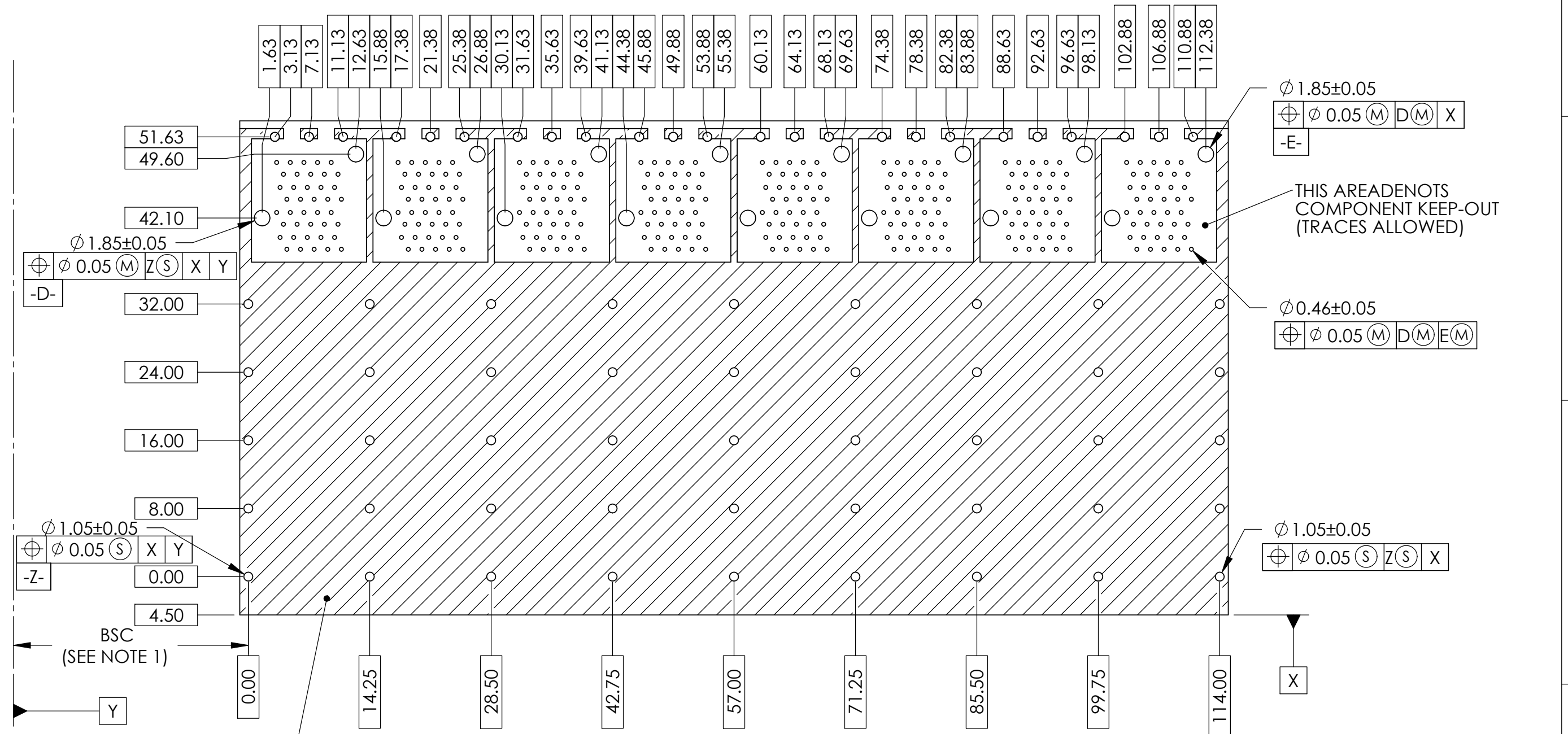
| | | | | | | | |
|--|--|-----------------|--|------------|--|--|--|
| UNLESS OTHERWISE SPECIFIED DIMENSIONS ARE IN MILLIMETERS TOLERANCES ARE: | | APPROVALS | | DATE | | Amphenol High Speed Interconnects | |
| DECIMALS X.X ± 0.25 | | DRAWN ERIC.Z | | AUG.30, 11 | | A Division of Amphenol Corp. www.amphenol-highspeed.com | |
| ANGLES ± 1° | | DESIGNED | | | | TITLE | |
| MATERIAL AND FINISH SEE NOTES | | CHECKED ChigowX | | AUG.30, 11 | | 2XN SFP+ EXPRESSPORT™ COMBO WITH LIGHT PIPE (SPRING FINGER GASKET) | |
| REF. X | | QA APPD | | | | SIZE A4 DWG. NO. P-UE86-DX627-X0XX1 REV. B | |
| CODE IDENT. NO. 03554 | | IE APP'D | | | | SCALE 3:2 PROJECT SHEET 7 OF 8 | |
| | | DWG APP'D J.SI | | AUG.30, 11 | | | |

NOTES:

- DATUM AND BASIC DIMENSIONS ESTABLISHED BY CUSTOMER.
- 1.05 mm DIAMETER HOLES ARE CHASSIS GROUND (69 HOLES).

REVISIONS

| REV. | ECN | DESCRIPTION | DATE | APPROVED |
|------|-----|-------------|------------|----------|
| A | | PROPOSAL | AUG.30, 11 | J.SI |
| B | | PROPOSAL | MAY.15, 13 | J.SI |



2X8 PCB LAYOUT

CROSS-HATCHED AREA DENOTS COMPONENT AND TRACE KEEP-OUT (EXCEPT CHASSIS GROUND)

DO NOT SCALE DRAWING

THIS DOCUMENT CONTAINS PROPRIETARY INFORMATION AND SUCH INFORMATION MAY NOT BE DISCLOSED TO OTHERS FOR ANY PURPOSE OR USED FOR MANUFACTURING PURPOSES WITHOUT PERMISSION FROM AMPHENOL CANADA CORP.

| | | | |
|---|-----------------|------------|--|
| UNLESS OTHERWISE SPECIFIED DIMENSIONS ARE IN MILLIMETERS TOLERANCES ARE: DECIMALS ANGLES X.X ± 0.25 ± 1° X.XX ± 0.15 | APPROVALS | DATE | Amphenol High Speed Interconnects A Division of Amphenol Corp. www.amphenol-highspeed.com |
| | DRAWN ERIC.Z | AUG.30, 11 | |
| | DESIGNED | | |
| | CHECKED ChigowX | AUG.30, 11 | |
| MATERIAL AND FINISH | SEE NOTES | QA APP'D | TITLE |
| REF. X | | IE APP'D | 2XN SFP+ EXPRESSPORT™ COMBO WITH LIGHT PIPE (SPRING FINGER GASKET) |
| CODE IDENT. NO. 03554 | DWG APP'D J.SI | AUG.30, 11 | SIZE A4 DWG. NO. P-UE86-DX627-X0XX1 REV. B |
| | | | SCALE 3:2 PROJECT SHEET 8 OF 8 |

Данный компонент на территории Российской Федерации

Вы можете приобрести в компании MosChip.

Для оперативного оформления запроса Вам необходимо перейти по данной ссылке:

<http://moschip.ru/get-element>

Вы можете разместить у нас заказ для любого Вашего проекта, будь то серийное производство или разработка единичного прибора.

В нашем ассортименте представлены ведущие мировые производители активных и пассивных электронных компонентов.

Нашей специализацией является поставка электронной компонентной базы двойного назначения, продукции таких производителей как XILINX, Intel (ex.ALTERA), Vicor, Microchip, Texas Instruments, Analog Devices, Mini-Circuits, Amphenol, Glenair.

Сотрудничество с глобальными дистрибьюторами электронных компонентов, предоставляет возможность заказывать и получать с международных складов практически любой перечень компонентов в оптимальные для Вас сроки.

На всех этапах разработки и производства наши партнеры могут получить квалифицированную поддержку опытных инженеров.

Система менеджмента качества компании отвечает требованиям в соответствии с ГОСТ Р ИСО 9001, ГОСТ РВ 0015-002 и ЭС РД 009

Офис по работе с юридическими лицами:

105318, г.Москва, ул.Щербаковская д.3, офис 1107, 1118, ДЦ «Щербаковский»

Телефон: +7 495 668-12-70 (многоканальный)

Факс: +7 495 668-12-70 (доб.304)

E-mail: info@moschip.ru

Skype отдела продаж:

moschip.ru

moschip.ru_4

moschip.ru_6

moschip.ru_9