

Surface-mounting Switches with a Sealed Structure for High Reliability.

Available on Embossed Tape

- Sealed construction conforming to IP67 (IEC-60529) provides high contact reliability in locations exposed to dust or water. (* Excluding the terminal section.)
- Surface-mounting terminals for high-density mounting.
- Ground terminal available to protect against static electricity.
- Available in embossed taping packages for automatic mounting.



RoHS Compliant

List of Models

6 × 6 mm Models

| | | | | | Without ground terminal | | | | With ground terminal | | | |
|-----------------|---------------|--------|----------------------|--------|-------------------------|----------------------|-----------------|----------------------|----------------------|----------------------|-----------------|----------------------|
| | | | | | Bags | | Embossed taping | | Bags | | Embossed taping | |
| | | | | | Model | Minimum packing unit | Model | Minimum packing unit | Model | Minimum packing unit | Model | Minimum packing unit |
| B3S-1000 Series | Silver plated | 4.3 mm | 1.57 N {160 gf} max. | Ivory | B3S-1000 | 100 pcs | B3S-1000P | 1,000 pcs | B3S-1100 | 100 pcs | B3S-1100P | 1,000 pcs |
| | | | 2.26 N {230 gf} max. | Yellow | | | B3S-1002 | | B3S-1002P | | B3S-1102 | |

Note: Switches in bags must be ordered in units of 100 Switches, and Switches on embossed taping must be ordered in units of 1,000 Switches.

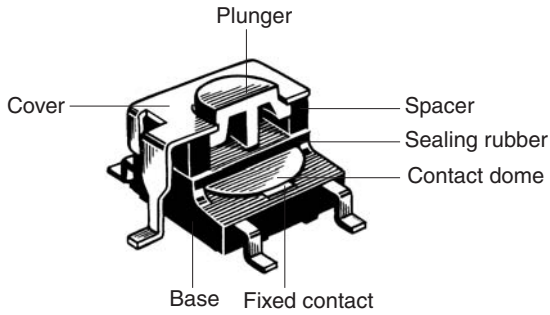
Ratings/Characteristics

| | |
|---|--|
| Rating (resistive load) | 1 to 50 mA, 3 to 24 VDC |
| Minimum applicable load (reference value) | 10 μ A at 1 VDC (resistive load) |
| Ambient operating temperature | -25°C to +70°C at 60%RH max. (with no icing or condensation) |
| Ambient operating humidity | 35% to 85% (at +5 to +35°C) |
| Contact form | SPST-NO |
| Contact resistance (initial value) | 100 m Ω max. |
| Insulation resistance | 100 M Ω min. (at 250 VDC with insulation tester) |
| Dielectric strength | 500 VAC, 50/60 Hz for 1 min |
| Bounce time | 5 ms max. |
| Vibration resistance | Malfunction: 10 to 55 Hz, 1.5-mm double amplitude |
| Shock resistance | Destruction: 1,000 m/s ² {approx. 100G} max. Malfunction: 100 m/s ² {approx. 10G} max. |
| Durability | Standard force models (1.57 N {160 gf}): 500,000 operations min. High-force models (2.26 N {230 gf}): 300,000 operations min. |
| Weight | Approx. 0.3 g |
| Degree of protection | IEC IP67 |
| Washing | Possible |

Operating Characteristics

| Item | Type Operating force (OF) Model | B3S Series | |
|----------------------|---------------------------------------|---|----------------------|
| | | 1.57 N B3S-1□00 | 2.26 N B3S-1□02 |
| Operating force (OF) | | 1.57 N {160 gf} max. | 2.26 N {230 gf} max. |
| Releasing force (RF) | | 0.2 N {20 gf} min. | 0.49 N {50 gf} min. |
| Pretravel (PT) | | 0.25 ^{+0.2} / _{-0.1} mm | |

■ Model Structure



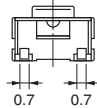
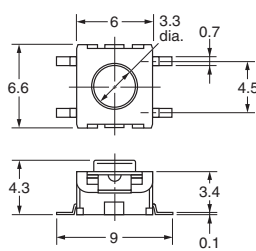
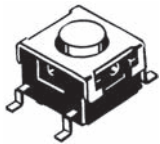
■ Dimensions (Unit: mm)

Note: The numbers used for terminals in the following graphics are indicated in the "Bottom View" diagram below. In this diagram, the Switch is rotated so that the terminals are on the right and left-hand sides, and the OMRON logo appears the right way up.

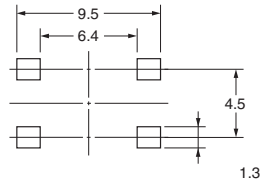


Without Ground Terminal

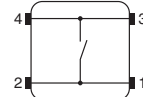
B3S-1000
B3S-1002



PCB Pad (Top View)

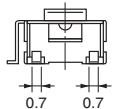
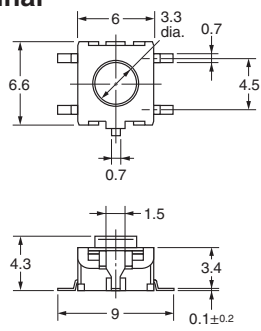
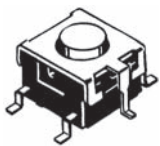


Terminal Arrangement /Internal Connections (Top View)

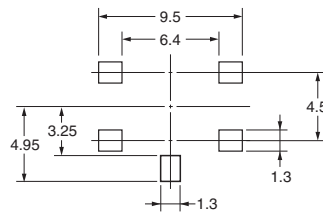


With Ground Terminal

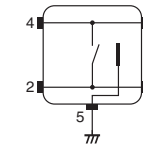
B3S-1100
B3S-1102



PCB Pad (Top View)



Terminal Arrangement /Internal Connections (Top View)



Note: Unless otherwise specified, a tolerance of ± 0.4 mm applies to all dimensions. No terminal numbers are indicated on the Switches.

■ Precautions

Be sure to read the safety precautions common to all Tactile Switches for correct use.

- Application examples provided in this document are for reference only. In actual applications, confirm equipment functions and safety before using the product.
- Consult your OMRON representative before using the product under conditions which are not described in the manual or applying the product to nuclear control systems, railroad systems, aviation systems, vehicles, combustion systems, medical equipment, amusement machines, safety equipment, and other systems or equipment that may have a serious influence on lives and property if used improperly. Make sure that the ratings and performance characteristics of the product provide a margin of safety for the system or equipment, and be sure to provide the system or equipment with double safety mechanisms.

Note: Do not use this document to operate the Unit.

OMRON Corporation
Electronic and Mechanical Components Company

Contact: www.omron.com/ecb

Cat. No. A204-E1-02
1014(0207)(O)

Mouser Electronics

Authorized Distributor

Click to View Pricing, Inventory, Delivery & Lifecycle Information:

[Omron:](#)

[B3S-1100](#) [B3S-1102](#) [B3S-1102P](#) [B3S-1000P](#) [B3S-1002P](#) [B3S-1000](#) [B3S-1002](#) [B3S-1100P](#)

Данный компонент на территории Российской Федерации

Вы можете приобрести в компании MosChip.

Для оперативного оформления запроса Вам необходимо перейти по данной ссылке:

<http://moschip.ru/get-element>

Вы можете разместить у нас заказ для любого Вашего проекта, будь то серийное производство или разработка единичного прибора.

В нашем ассортименте представлены ведущие мировые производители активных и пассивных электронных компонентов.

Нашей специализацией является поставка электронной компонентной базы двойного назначения, продукции таких производителей как XILINX, Intel (ex.ALTERA), Vicor, Microchip, Texas Instruments, Analog Devices, Mini-Circuits, Amphenol, Glenair.

Сотрудничество с глобальными дистрибьюторами электронных компонентов, предоставляет возможность заказывать и получать с международных складов практически любой перечень компонентов в оптимальные для Вас сроки.

На всех этапах разработки и производства наши партнеры могут получить квалифицированную поддержку опытных инженеров.

Система менеджмента качества компании отвечает требованиям в соответствии с ГОСТ Р ИСО 9001, ГОСТ РВ 0015-002 и ЭС РД 009

Офис по работе с юридическими лицами:

105318, г.Москва, ул.Щербаковская д.3, офис 1107, 1118, ДЦ «Щербаковский»

Телефон: +7 495 668-12-70 (многоканальный)

Факс: +7 495 668-12-70 (доб.304)

E-mail: info@moschip.ru

Skype отдела продаж:

moschip.ru

moschip.ru_4

moschip.ru_6

moschip.ru_9