

COMPONENTS, CONNECTORS & CABLING GUIDE

XLR CONNECTORS

A range of audio and video connectors incorporating many innovative features. The cable mounting plugs and sockets feature robust die-cast metal back shells or the newly introduced plastic back shells both incorporating an anti-vibration collar. The whole product range can be fitted with a unique reusable colour coding system which enables fast identification of audio/video channels.

Series: Die Cast Metal Back Shell Cable Plugs

- ▶ Available with Silver or Gold Contacts
- ▶ 3, 4 and 5 pin configuration

- ▶ Nickel or Black shell



| Part Number Selection | Silver Contacts | | Gold Contacts | |
|--------------------------|-----------------|----------|---------------|----------|
| | Nickel | Black | Nickel | Black |
| 3 Way | 701-0300 | 709-0300 | 705-0300 | 713-0300 |
| 4 Way | 701-0400 | 709-0400 | 705-0400 | 713-0400 |
| 5 Way | 701-0500 | 709-0500 | 705-0500 | 713-0500 |

Series: Plastic Back Shell Cable Plugs

- ▶ Available with Silver or Gold Contacts
- ▶ 3, 4 and 5 pin configuration

- ▶ Nickel or Black shell



| Part Number Selection | Silver Contacts | | Gold Contacts | |
|--------------------------|-----------------|----------|---------------|----------|
| | Nickel | Black | Nickel | Black |
| 3 Way | 801-0300 | 805-0300 | 803-0300 | 807-0300 |
| 4 Way | 801-0400 | 805-0400 | 803-0400 | 807-0400 |
| 5 Way | 801-0500 | 805-0500 | 803-0500 | 807-0500 |

Series: Die Cast Metal Back Shell Cable Sockets

- ▶ Available with Silver or Gold Contacts
- ▶ 3, 4 and 5 pin configuration

- ▶ Nickel or Black shell



| Part Number Selection | Silver Contacts | | Gold Contacts | |
|--------------------------|-----------------|----------|---------------|----------|
| | Nickel | Black | Nickel | Black |
| 3 Way | 700-0300 | 708-0300 | 704-0300 | 712-0300 |
| 4 Way | 700-0400 | 708-0400 | 704-0400 | 712-0400 |
| 5 Way | 700-0500 | 708-0500 | 704-0500 | 712-0500 |

Series: Plastic Back Shell Cable Sockets

- ▶ Available with Silver or Gold Contacts
- ▶ 3, 4 and 5 pin configuration

- ▶ Nickel or Black shell



| Part Number Selection | Silver Contacts | | Gold Contacts | |
|--------------------------|-----------------|----------|---------------|----------|
| | Nickel | Black | Nickel | Black |
| 3 Way | 800-0300 | 804-0300 | 802-0300 | 806-0300 |
| 4 Way | 800-0400 | 804-0400 | 802-0400 | 806-0400 |
| 5 Way | 800-0500 | 804-0500 | 802-0500 | 806-0500 |

Series: Panel Plugs

- ▶ Available with Silver or Gold Contacts
- ▶ 3, 4 and 5 pin configuration

- ▶ Nickel or Black shell



| Part Number Selection | Silver Contacts | | Gold Contacts | |
|--------------------------|-----------------|----------|---------------|----------|
| | Nickel | Black | Nickel | Black |
| 3 Way | 703-0300 | 711-0300 | 707-0300 | 715-0300 |
| 4 Way | 703-0400 | 711-0400 | 707-0400 | 715-0400 |
| 5 Way | 703-0500 | 711-0500 | 707-0500 | 715-0500 |

Series: Panel Sockets

- ▶ Available with Silver or Gold Contacts
- ▶ 3, 4 and 5 pin configuration

- ▶ Nickel or Black shell



| Part Number Selection | Silver Contacts | | Gold Contacts | |
|--------------------------|-----------------|----------|---------------|----------|
| | Nickel | Black | Nickel | Black |
| 3 Way | 702-0300 | 710-0300 | 706-0300 | 714-0300 |
| 4 Way | 702-0400 | 710-0400 | 706-0400 | 714-0400 |
| 5 Way | 702-0500 | 710-0500 | 706-0500 | 714-0500 |



UNIVERSAL PANEL MOUNTING CONNECTORS

A range of panel mounting connectors which utilises the same panel mounting cut-out for both plugs and sockets, which makes the product range extremely versatile. The range can be front or rear panel mounted and is available in nickel or black chrome shell finish, with either silver or gold plated contact options.

Series: Panel Plugs

- ▶ Available with Silver or Gold Contacts
- ▶ Nickel or Black shell
- ▶ 3, 4 and 5 pin configuration

| Part Number Selection | Silver Contacts | | Gold Contacts | |
|--------------------------|-----------------|----------|---------------|----------|
| | Nickel | Black | Nickel | Black |
| 3 Way | 717-0300 | 719-0300 | 723-0300 | 725-0300 |
| 4 Way | 717-0400 | 719-0400 | 723-0400 | 725-0400 |
| 5 Way | 717-0500 | 719-0500 | 723-0500 | 725-0500 |



Series: Panel Sockets

- ▶ Available with Silver or Gold Contacts
- ▶ Nickel or Black shell
- ▶ 3, 4 and 5 pin configuration

| Part Number Selection | Silver Contacts | | Gold Contacts | |
|--------------------------|-----------------|----------|---------------|----------|
| | Nickel | Black | Nickel | Black |
| 3 Way | 716-0300 | 718-0300 | 722-0300 | 724-0300 |
| 4 Way | 716-0400 | 718-0400 | 722-0400 | 724-0400 |
| 5 Way | 716-0500 | 718-0500 | 722-0500 | 724-0500 |



UNIVERSAL PANEL MOUNTING CONNECTORS, NON LATCHING

The universal range of connectors is also available in a non-latching version for users who prefer the slightly faster disconnection that this type of connector allows.

Series: Panel Plugs

- ▶ Available with Silver or Gold Contacts
- ▶ Nickel or Black shell
- ▶ 3, 4 and 5 pin configuration

| Part Number Selection | Silver Contacts | | Gold Contacts | |
|--------------------------|-----------------|----------|---------------|----------|
| | Nickel | Black | Nickel | Black |
| 3 Way | 717-0301 | 719-0301 | 723-0301 | 725-0301 |
| 4 Way | 717-0401 | 719-0401 | 723-0401 | 725-0401 |
| 5 Way | 717-0501 | 719-0501 | 723-0501 | 725-0501 |



Series: Panel Sockets

- ▶ Available with Silver or Gold Contacts
- ▶ Nickel or Black shell
- ▶ 3, 4 and 5 pin configuration

| Part Number Selection | Silver Contacts | | Gold Contacts | |
|--------------------------|-----------------|----------|---------------|----------|
| | Nickel | Black | Nickel | Black |
| 3 Way | 716-0301 | 718-0301 | 722-0301 | 724-0301 |
| 4 Way | 716-0401 | 718-0401 | 722-0401 | 724-0401 |
| 5 Way | 716-0501 | 718-0501 | 722-0501 | 724-0501 |



PROFESSIONAL 1/4" JACK CONNECTORS

A range of professional 1/4" jack connectors with several unique constructional advantages. The plugs feature solid centre cores of malleable copper, making them less susceptible to brittle fracture as in brass counterparts; the generous solder contact is riveted to the ground contact before final assembly of the centre pin, making the connector more reliable than equivalents with single riveting. The plugs feature a unique double position cable retention collet that provides equal cable clamping on both thick and thin cables. The metal back shells are available in black chrome or nickel finish.

| Part Number Selection | Solid | | Copper Tip | |
|--------------------------|----------|----------|------------|----------|
| | Nickel | Black | Nickel | Black |
| 2 Pole | 326-0000 | 323-0100 | 329-0000 | 329-0100 |
| 3 Pole | 327-0000 | 325-0100 | 329-0001 | 329-0101 |



PROFESSIONAL PHONO CONNECTORS

Series: Hollow Pin Phono Plugs

A range of professional phono plugs manufactured from turned brass, with hollow centre pin contacts. The ground contact features a patented 'T' slot design which provides a positive contact, even on undersized phono sockets. The range features spring cable strain relief, and the plugs can be fitted with colour coding rings for identification. Accepts cables up to 5.5mm diameter.

| Part Number Selection | Nickel | Gold | Black Chrome |
|--------------------------|--------------------|----------|-----------------|
| | Plain (No ID Ring) | 330-0000 | 331-0000 |
| Colour Coded Black | 330-0100 | 331-0100 | 332-0100 |
| Colour Coded Red | 330-0500 | 331-0500 | 332-0500 |





Series: Aluminium Anodised Back Shell

A range of professional phono plugs featuring colour coded anodised aluminium back shells. The solid centre pin features a generous solder bucket. A robust cable clamp provides additional strength and accommodates large diameter cables. The contact insulator is manufactured from PTFE, providing a much improved dielectric (and the capacity to withstand soldering temperatures without distortion compared to cheaper polyethylene insulators). Accepts cables up to 5.5mm diameter.

Part Number Selection

| | | | |
|-------|----------|--------|----------|
| Black | 346-0100 | Red | 346-0500 |
| Blue | 346-0200 | Yellow | 346-0700 |



Series: Solid Pin Phono Plugs

A professional phono plug range with solid centre pin contacts which feature improved solder bucket termination. The ground contact features a patented 'T' slot design which provides a positive contact, even on undersized phono sockets. All versions feature spring cable strain relief.

Part Number Selection

| | Nickel | Gold | Black Chrome |
|--------------------|----------|----------|--------------|
| Plain (No ID Ring) | 333-0000 | 334-0000 | 335-0000 |
| Colour Coded Black | 333-0100 | 334-0100 | 335-0100 |
| Colour Coded Red | 333-0500 | 334-0500 | 335-0500 |



Series: High End Shrouded Ground Contact

A range of professional phono plugs featuring a fully shrouded ground contact, offering two advantages – full screening against EMI/RFI plus mechanical protection of the ground contact. The solid centre pin features a generous solder bucket. A robust cable clamp provides additional strength and accommodates large diameter cables. The contact insulator is manufactured from PTFE, providing a much improved dielectric. The contact areas are 0.5u gold-plated.

Part Number Selection

| | Gold Cap & Spring | Black Chrome Cap & Spring |
|--------------------|-------------------|---------------------------|
| Plain (No ID Ring) | 320-0000 | 321-0000 |
| Colour Coded Red | 320-0500 | 321-0500 |
| Colour Coded White | 320-0600 | 321-0600 |

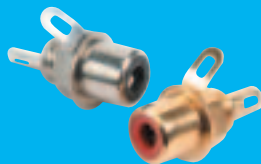


Series: Professional Phono Line Sockets

A range of professional phono line sockets manufactured from turned brass. All versions feature spring cable strain relief.

Part Number Selection

| | Nickel | Gold | Black Chrome |
|--------------------|----------|----------|--------------|
| Plain (No ID Ring) | 340-0000 | 341-0000 | 342-0000 |
| Colour Coded Black | 340-0100 | 341-0100 | 342-0100 |
| Colour Coded Red | 340-0500 | 341-0500 | 342-0500 |



Series: Professional Phono Panel Socket

A turned brass single nut fixing panel socket, available in either red or black insulator material for identification purposes.

Part Number Selection

| | Nickel | Gold |
|-------|----------|----------|
| Black | 431-0100 | 432-0100 |
| Red | 431-0500 | 432-0500 |

MIDI CONNECTORS

Series: Cable Plug

Part Number Selection

| | Nickel | Black |
|-----------|----------|----------|
| 5 Way 45° | 610-0500 | 611-0500 |





Series: Flanged Panel Socket

| Part Number Selection | Nickel | Black |
|-----------------------|----------|----------|
| 5 Way 45° | 630-0500 | 631-0500 |



Series: Professional Circular Panel Socket

| Part Number Selection | Nickel | Black |
|-----------------------|----------|----------|
| 5 Way 45° | 650-0500 | 651-0500 |



SCREENED DIN CONNECTORS

NEW for Series: Right Angled DIN Connectors

- ▶ Available in 3 to 8 pin configuration
- ▶ Cable exit 90° to plug insertion
- ▶ DIN standard connector

| Part Number Selection | Nickel | Black | Part Number Selection | Nickel | Black |
|-----------------------|----------|-------|-----------------------|----------|-------|
| 3 Way | 620-0300 | | 6 Way | 620-0600 | |
| 4 Way | 620-0400 | | 7 Way | 620-0700 | |
| 5 Way 45° | 620-0500 | | 8 Way | 620-0800 | |
| 5 Way 60° | 620-0510 | | | | |

A fully screened robust range of DIN connectors for use in instrumentation and audio applications. Available in two finishes: bright nickel and non-reflective electrically conductive matt black. Robust construction incorporating cable grip and strain relief. Manufactured to DIN 41524, 45322, 45326, 45327 and 45329.

Series: Standard Plug

- ▶ Nickel or Black Shell
- ▶ 3 to 8 Pin Configuration

| Part Number Selection | Nickel | Black | Part Number Selection | Nickel | Black |
|-----------------------|----------|----------|-----------------------|----------|----------|
| 3 Way | 610-0300 | 611-0300 | 5 Way Dice | 610-0520 | 611-0520 |
| 4 Way | 610-0400 | 611-0400 | 6 Way | 610-0600 | 611-0600 |
| 5 Way 45° | 610-0500 | 611-0500 | 7 Way | 610-0700 | 611-0700 |
| 5 Way 60° | 610-0510 | 611-0510 | 8 Way | 610-0800 | 611-0800 |



Series: Lockable Plug

- ▶ Nickel or Black Shell
- ▶ Latching
- ▶ 3 to 8 Pin Configuration

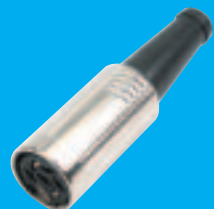
| Part Number Selection | Nickel | Black | Part Number Selection | Nickel | Black |
|-----------------------|----------|----------|-----------------------|----------|----------|
| 3 Way | 590-0300 | 591-0300 | 5 Way Dice | 590-0520 | 591-0520 |
| 4 Way | 590-0400 | 591-0400 | 6 Way | 590-0600 | 591-0600 |
| 5 Way 45° | 590-0500 | 591-0500 | 7 Way | 590-0700 | 591-0700 |
| 5 Way 60° | 590-0510 | 591-0510 | 8 Way | 590-0800 | 591-0800 |



Series: Line Socket

- ▶ Nickel or Black Shell
- ▶ 3 to 7 Pin Configuration

| Part Number Selection | Nickel | Black | Part Number Selection | Nickel | Black |
|-----------------------|----------|----------|-----------------------|----------|----------|
| 3 Way | 600-0300 | 601-0300 | 5 Way Dice | 600-0520 | 601-0520 |
| 4 Way | 600-0400 | 601-0400 | 6 Way | 600-0600 | 601-0600 |
| 5 Way 45° | 600-0500 | 601-0500 | 7 Way | 600-0700 | 601-0700 |
| 5 Way 60° | 600-0510 | 601-0510 | | | |





Series: Professional Circular PCB Mounting

A range of sockets with straight PCB pins. The sockets can be secured to a panel by means of a hexagonal nut.

| Part Number Selection | Nickel | Black | | Nickel | Black |
|-----------------------|----------|----------|-------------|------------|----------|
| 3 Way | 690-0300 | 691-0300 | 6 Way | 690-0600 | 691-0600 |
| 4 Way | 690-0400 | 691-0400 | 7 Way | 690-0700 | 691-0700 |
| 5 Way 45° | 690-0500 | 691-0500 | 8 Way | 690-0800 | 691-0800 |
| 5 Way 60° | 690-0510 | 691-0510 | Hexagon Nut | 650-0300-3 | |
| 5 Way Dice | 690-0520 | 691-0520 | | | |



Series: Flanged Panel Socket

A flange mounted panel socket which mates with all standard and lockable plugs.

| Part Number Selection | Nickel | Black | | Nickel | Black |
|-----------------------|----------|----------|------------|----------|----------|
| 3 Way | 630-0300 | 631-0300 | 5 Way Dice | 630-0520 | 631-0520 |
| 4 Way | 630-0400 | 631-0400 | 6 Way | 630-0600 | 631-0600 |
| 5 Way 45° | 630-0500 | 631-0500 | 7 Way | 630-0700 | 631-0700 |
| 5 Way 60° | 630-0510 | 631-0510 | 8 Way | 630-0800 | 631-0800 |



Series: Professional Circular Panel Socket

A range of professional mounting sockets, designed for panel mounting via a single hexagonal turned brass nut. These sockets incorporate an anti-rotational locating spigot, and mate with all standard lockable plugs.

| Part Number Selection | Nickel | Black | | Nickel | Black |
|-----------------------|----------|----------|------------|----------|----------|
| 3 Way | 650-0300 | 651-0300 | 5 Way Dice | 650-0520 | 651-0520 |
| 4 Way | 650-0400 | 651-0400 | 6 Way | 650-0600 | 651-0600 |
| 5 Way 45° | 650-0500 | 651-0500 | 7 Way | 650-0700 | 651-0700 |
| 5 Way 60° | 650-0510 | 651-0510 | 8 Way | 650-0800 | 651-0800 |

SCREENED DIN SPEAKER CONNECTORS

A complete range of latching and standard speaker connectors available in bright nickel or non-reflective matt black finishes.

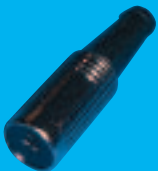
Series: 2-Way Speaker Plug

| Part Number Selection | Nickel |
|-----------------------|----------|
| Standard | 622-0000 |
| Lockable | 638-0000 |



Series: 2 Way Speaker Line Socket

| Part Number Selection | Nickel |
|-----------------------|----------|
| Standard | 629-0000 |



Series: 2 Way Speaker Panel Socket

| Part Number Selection | Nickel | | |
|-----------------------|----------|------------------------------|----------|
| Standard | 625-0000 | Standard Switched | 627-0000 |
| Lockable | 642-0000 | Standard Switched Reversible | 626-0000 |





RING LOCK DIN CONNECTORS

A fully screened robust range of DIN connectors for use in instrumentation and audio applications. Available in bright nickel finish with an interchangeable black plastic locking ring.

Series: Standard Plug

| Part Number Selection | | | |
|-----------------------|----------|-------|----------|
| 3 Way | 592-0301 | 6 Way | 592-0601 |
| 4 Way | 592-0401 | 7 Way | 592-0701 |
| 5 Way 45° | 592-0501 | 8 Way | 592-0801 |
| 5 Way 60° | 592-0511 | | |



Series: Chassis Socket

| Part Number Selection | | | |
|-----------------------|----------|-------|----------|
| 3 Way | 593-0300 | 6 Way | 593-0600 |
| 4 Way | 593-0400 | 7 Way | 593-0700 |
| 5 Way 45° | 593-0500 | 8 Way | 593-0800 |
| 5 Way 60° | 593-0510 | | |



Series: Colour Coding Rings for Ring Lock DIN Connectors

| Part Number Selection | Locking Ring (Plug) | Identification Ring (Socket) |
|-----------------------|---------------------|------------------------------|
| | Blue | 592-0002 |
| | Green | 592-0004 |
| | Red | 592-0005 |
| | White | 592-0006 |
| | Yellow | 592-0007 |
| | Mixed (4x6 colours) | 592-0000 |

INSULATED DIN CONNECTORS

Quality DIN connectors with insulated housings conforming to DIN 41524, 45322, 45326, 45327 and 45329. This range of connectors is used extensively in audio applications and offers ease of assembly and extremely good contact performance.

Series: Plug

| Part Number Selection | Round Cable | | Round Cable |
|-----------------------|-------------|------------|-------------|
| 3 Way | 660-0300 | 5 Way Dice | 660-0520 |
| 4 Way | 660-0400 | 6 Way | 660-0600 |
| 5 Way 45° | 660-0500 | 7 Way | 660-0700 |
| 5 Way 60° | 660-0510 | 8 Way | 660-0800 |



Series: 90° PCB DIN Sockets

| Part Number Selection | Round Cable | | Round Cable |
|-----------------------|-------------|--------------|-------------|
| 3 Way | 671-0300 | 5 Way Dice I | 670-0530 |
| 4 Way | 671-0400 | 6 Way | 671-0600 |
| 5 Way 45° | 671-0500 | 7 Way | 671-0700 |
| 5 Way 60° | 671-0510 | 8 Way | 671-0800 |
| 5 Way Dice | 671-0520 | | |



INSULATED SPEAKER CONNECTORS

Series: Insulated Speaker Plug

| Part Number Selection | Round Cable |
|-----------------------|-------------|
| With Cable Clamp | 656-0000 |





Series: Insulated Speaker Line Socket

| Part Number Selection | Nickel |
|-----------------------|----------|
| With Cable Clamp | 658-0000 |



Series: Phono Connector Economy

| Part Number Selection | Nickel |
|-----------------------|----------|
| Black | 425-0100 |
| Red | 425-0500 |



Series: Standard Plug with Insulated Housing

| Part Number Selection | Hollow Pin | Solid Pin |
|-----------------------|------------|-----------|
| Black (Nickel) | 413-0100 | 415-0100 |
| Red (Nickel) | 413-0500 | 415-0500 |
| Black (Gold) | | 416-0100 |
| Red (Gold) | | 416-0500 |



Series: Standard Socket with Insulated Housing

| Part Number Selection | Nickel |
|-----------------------|----------|
| Black | 433-0100 |
| Red | 433-0500 |

AUDIO / MUSICAL INSTRUMENTATION CABLE AND CABLE

Deltron Emcon offer both audio cable, and audio cable assemblies using professional cable provided by Gotham Audio Cables. Featuring the unique 'Double Reussen Shielding' which is two layers of copper wire on the conductors, results in superb flexibility and the best possible RF rejection up to 130dB.

Deltron Emcon have access to the complete Gotham Audio Cables range, and are also capable of providing volume bespoke cable assemblies.



4MM SINGLE POLE CONNECTORS AND ACCESSORIES

A range of 4mm products offering many unique features and manufactured to a very high standard. This range caters for a broad range of instrumentation and speaker applications. All contact material is nickel plated unless otherwise stated.

Series: Standard Plug

- ▶ Solder Bucket Termination
- ▶ Stainless Steel Contact Spring
- ▶ Screw-on acetal moulding
- ▶ Rated at 10 Amps

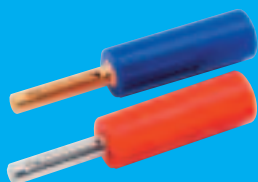
| Part Number Selection | Nickel Plated | | Gold Plated | | |
|-----------------------|---------------|-------|-------------|--------|----------|
| Black | 550-0100 | Green | 550-0400 | White | 550-0600 |
| Blue | 550-0200 | Red | 550-0500 | Yellow | 550-0700 |
| Brown | 550-0300 | | | | |



Series: Standard Plug with Large Solder Bucket Termination

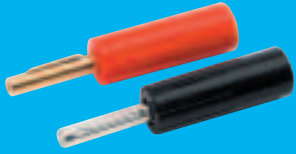
- ▶ Large Solder Bucket Connection
- ▶ Supplied with Insulating Cover to Accept
- ▶ Cable up to 7.1mm Diameter
- ▶ Rated at 10 Amps
- ▶ Accepts Conductors up to 5.5mm Diameter
- ▶ Stainless Steel Contact Spring Incorporated
- ▶ 0.5 Micron Gold Plating for Reduced Contact Resistance

| Part Number Selection | Nickel Plated | Gold Plated | Nickel Plated | Gold Plated | |
|-----------------------|---------------|-------------|---------------|-------------|----------|
| Black | 579-0100 | 580-0100 | Red | 579-0500 | 580-0500 |
| Blue | 579-0200 | 580-0200 | White | 579-0600 | 580-0600 |
| Brown | 579-0300 | 580-0300 | Yellow | 579-0700 | 580-0700 |
| Green | 579-0400 | 580-0400 | | | |



Plugs with order codes 583 and 584 feature solder, screw or crimp termination.

| Part Number Selection | Nickel Plated | Black Plated |
|-----------------------|---------------|--------------|
| Black | 583-0100 | 584-0100 |
| Red | 583-0500 | 584-0500 |



Series: Triple Contact Plug

- ▶ Screw Connection for the Lead Wire
- ▶ Accepts Cables to 7.1mm Diameter
- ▶ Rated at 10 Amps
- ▶ Screw-on Rigid Acetal Moulding
- ▶ Accepts Conductor to 3.5mm Diameter

| Part Number Selection | | | |
|-----------------------|----------|--------|----------|
| Black | 557-0100 | Red | 557-0500 |
| Blue | 557-0200 | White | 557-0600 |
| Brown | 557-0300 | Yellow | 557-0700 |
| Green | 557-0400 | | |



Series: Stackable Plug

- ▶ Screw Connection for the Lead Wire
- ▶ Rated at 10 Amps
- ▶ Push-on Pliable PVC Moulding

| Part Number Selection | | | |
|-----------------------|----------|--------|----------|
| Black | 553-0100 | Red | 553-0500 |
| Blue | 553-0200 | White | 553-0600 |
| Brown | 553-0300 | Yellow | 553-0700 |
| Green | 553-0400 | | |



Series: Bunch Pin Side Stackable Plug

- ▶ Screw Connection for the Lead Wire
- ▶ Rated at 20 Amps
- ▶ Push-on Pliable PVC Moulding

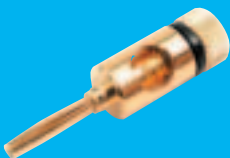
| Part Number Selection | | | |
|-----------------------|----------|--------|----------|
| Black | 555-0100 | Red | 555-0500 |
| Blue | 555-0200 | White | 555-0600 |
| Brown | 555-0300 | Yellow | 555-0700 |
| Green | 555-0400 | | |



Series: 4mm Audio Point

- ▶ High Quality Audio Plug
- ▶ Connection is made by a Knurled Screw Clamp
- ▶ Designed primarily for use in the Audio Industry for Terminating Heavy-Duty Speaker Cable, and Inter-Connection between Speaker and Amplifier
- ▶ Cross Hole to Accept Cable to 7.5mm Diameter and 4mm Plug in the Clamp Screw
- ▶ Supplied in Gold Plated Finish

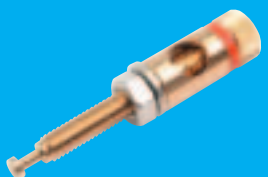
| Part Number Selection | |
|-----------------------|----------|
| Black | 576-0100 |
| Red | 576-0500 |



Series: Rear Speaker Coupling

- ▶ Large Cable Entry Hole which Accepts Cable up to 7.5mm Diameter
- ▶ Speaker Connection can be Terminated by either
 - ▶ a 4mm hole in the clamp screw, or clamped
 - ▶ through the cross hole via the knurled screw
- ▶ Ideally Suited for Rear Termination of Speakers
- ▶ Gold Plated Finish

| Part Number Selection | |
|-----------------------|----------|
| Black | 577-0100 |
| Red | 577-0500 |





Series: Stud Mounting Bunch Pin Plug

- ▶ Suitable for PCB test points and shunt terminals
- ▶ Supplied with 2 fixing nuts (M4)
- ▶ Nickel plated plug
- ▶ Current rating 20 Amps

Part Number Selection

Stud Mounting Bunch Pin Plug 559-0010



Series: Panel Mounting Socket

- ▶ Available with solder tag or solder bucket connections
- ▶ Supplied with panel mounting retention nut
- ▶ Rated at 10 Amps

Part Number Selection

| Part Number Selection | Solder Terminal | Solder Bucket | | Solder Terminal | Solder Bucket |
|-----------------------|-----------------|---------------|--------|-----------------|---------------|
| Black | 551-0100 | 563-0100 | Red | 551-0500 | 563-0500 |
| Blue | 551-0200 | 563-0200 | White | 551-0600 | 563-0600 |
| Brown | 551-0300 | 563-0300 | Yellow | 551-0700 | 563-0700 |
| Green | 551-0400 | 563-0400 | | | |

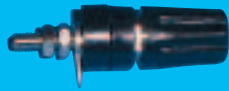


Series: 90° PCB Mounted Insulated Socket – 4mm Hole Single and Double

- ▶ For direct mounting onto PCB's
- ▶ Rated at 10 Amps
- ▶ Grooves in the outer housing to provide side stacking alignment

Part Number Selection

| Part Number Selection | Single | Double | | Single | Double |
|-----------------------|----------|----------|--------|----------|----------|
| Black | 571-0100 | 572-0100 | Red | 571-0500 | 572-0500 |
| Blue | 571-0200 | 572-0200 | White | 571-0600 | 572-0600 |
| Brown | 571-0300 | | Yellow | 571-0700 | |
| Green | 571-0400 | 572-0400 | | | |



Series: Insulated Terminal

- ▶ Incorporates a 4mm socket and rigid acetal moulding
- ▶ Rated at 30 Amps
- ▶ Terminal has a thread termination

Part Number Selection

| Part Number Selection | Single | Single |
|-----------------------|----------|-----------------|
| Black | 552-0100 | Red 552-0500 |
| Blue | 552-0200 | White 552-0600 |
| Green | 552-0400 | Yellow 552-0700 |



Series: Spade Adaptor

- ▶ Brass nickel plated adaptor accepts 4mm plug
- ▶ Rated at 20 Amps
- ▶ Accommodates terminal posts up to 8.3mm diameter

Part Number Selection

Black 536-0100
Red 536-0500



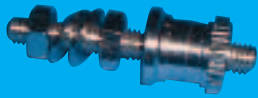
Series: Spade Terminal

- ▶ Brass nickel plated
- ▶ Accommodates a terminal diameter up to 8.3mm
- ▶ Rated at 20 Amps
- ▶ Rigid acetal moulding which clamps the lead wire

Part Number Selection

| Part Number Selection | Single | Single |
|-----------------------|----------|-----------------|
| Black | 562-0100 | Red 562-0500 |
| Blue | 562-0200 | White 562-0600 |
| Brown | 562-0300 | Yellow 562-0700 |
| Green | 562-0400 | |



**Series: Terminal Binding Post**

- ▶ Manufactured from nickel plated brass
- ▶ Rated at 30 Amps
- ▶ Complete with non-captive 2BA nut

Part Number Selection

Terminal Binding Post 351-0000

**Series: Miniature Probe**

- ▶ Ideally suited to high density PCB's, including integrated circuit pins and similar items

Part Number Selection

| | | | |
|-------|----------|--------|----------|
| Black | 575-0101 | Red | 575-0501 |
| Blue | 575-0201 | Yellow | 575-0701 |
| Green | 575-0401 | | |

**Series: Standard Crocodile Clip**

- ▶ Steel nickel plated
- ▶ Rear entry will accept 4mm plugs
- ▶ Rated at 5 Amps
- ▶ Allows fine wires to be held securely by an undercut clamping screw
- ▶ Insulating covers available separately

Part Number Selection

| | |
|------------------------|----------|
| Crocodile Clip | 303-0000 |
| Insulating Cover Black | 302-0100 |
| Insulating Cover Red | 302-0500 |

**Series: Large Insulated Crocodile Clip**

- ▶ Shrouded jaws
- ▶ Rated at 10 Amps
- ▶ Accepts 4mm plug or wire clamped by integral screw

Part Number Selection

| | |
|-------|----------|
| Black | 307-0100 |
| Red | 307-0500 |

**Series: Large Crocodile Clip**

- ▶ Bright nickel plated over steel
- ▶ Insulating covers available separately
- ▶ Rated at 20 Amps

Part Number Selection

| | |
|------------------------|----------|
| Crocodile Clip | 304-0000 |
| Insulating Cover Black | 310-0100 |
| Insulating Cover Red | 310-0500 |

DIE CAST BOXES**Series: Die Cast Boxes**

Deltron Emcon offer an extensive range of aluminium die cast boxes supplied with close fitting lids, providing excellent screening against EMI/RFI and are therefore ideal housings for electronic components and circuits.

- ▶ Available in three finishes - plain, powder coated and nylon coated
- ▶ Flanged range - with pre-drilled external mounting flanges
- ▶ IP66 sealed range

Deltron Emcon offer a custom solution service and can provide quotations for any type of machining and finishing which may be required by end-user customers.

Please ask for a copy of our Die Cast Box brochure.





MEDIA PATCHING PRODUCTS GUIDE



PRODUCTION TOOLING GUIDE



EMC FILTERS & COMPONENTS GUIDE

DELTRON AUSTRIA

Deltron Austria GmbH
E-Mail: office@deltron-austria.at
Web: www.deltron-austria.com

DELTRON DENMARK

Deltron Conelec AS
E-Mail: sales@conelec.dk
Web: www.deltron-conelec.dk

DELTRON FRANCE

Deltron EuroIndustrie SA
E-Mail: sales@deltron-euroindustrie.fr
Web: www.deltron-euroindustrie.com

DELTRON FRANCE

Deltron EMC SARM
E-Mail: sales@deltron-emc.fr
Web: www.deltron-emc.fr

DELTRON GERMANY

Deltron Components GmbH
E-Mail: info@deltron-components.de
Web: www.deltron-components.de

DELTRON IRELAND

Deltron Components UK Ltd
E-Mail: irishsales@deltron-uk.com
Web: www.deltron-uk.com

DELTRON ITALY

Deltron Euroind Srl
E-Mail: sales@deltron-euroind.it
Web: www.deltron-euroind.it

DELTRON NETHERLANDS

Deltron Radikor BV
E-Mail: sales@deltron-radikor.nl
Web: www.deltron-radikor.nl

DELTRON NORWAY

Deltron Conelec AS
E-Mail: sales@deltron-conelec.no
Web: www.deltron-norway.no

DELTRON SWEDEN

Deltron Freber AB
E-Mail: info@deltron-freber.se
Web: www.deltron-freber.com

DELTRON UK

Deltron UK Limited
E-Mail: sales@deltron-uk.com
Web: www.deltron-uk.com

COMPONENTS, CONNECTORS & CABLING GUIDE



Deltron Emcon Limited

Deltron Emcon House
Hargreaves Way
Sawcliffe Industrial Park
Scunthorpe
North Lincolnshire
DN15 8RF

Phone: 44-1724-273200
Fax: 44-1724-270230
E-Mail: sales@deltron-emcon.com
Web: www.deltron-emcon.com



Group Head Office

Deltron Electronics plc
Group Head Office
Suffolk House
Fordham Road
Newmarket
Suffolk
CB8 7AA

Phone: 44-1638-561156
Fax: 44-1638-661455
E-Mail: enquiries@deltron-electronics.com
Web: www.deltron-electronics.com



Certified No. FM 24398

Данный компонент на территории Российской Федерации

Вы можете приобрести в компании MosChip.

Для оперативного оформления запроса Вам необходимо перейти по данной ссылке:

<http://moschip.ru/get-element>

Вы можете разместить у нас заказ для любого Вашего проекта, будь то серийное производство или разработка единичного прибора.

В нашем ассортименте представлены ведущие мировые производители активных и пассивных электронных компонентов.

Нашей специализацией является поставка электронной компонентной базы двойного назначения, продукции таких производителей как XILINX, Intel (ex.ALTERA), Vicor, Microchip, Texas Instruments, Analog Devices, Mini-Circuits, Amphenol, Glenair.

Сотрудничество с глобальными дистрибьюторами электронных компонентов, предоставляет возможность заказывать и получать с международных складов практически любой перечень компонентов в оптимальные для Вас сроки.

На всех этапах разработки и производства наши партнеры могут получить квалифицированную поддержку опытных инженеров.

Система менеджмента качества компании отвечает требованиям в соответствии с ГОСТ Р ИСО 9001, ГОСТ РВ 0015-002 и ЭС РД 009

Офис по работе с юридическими лицами:

105318, г.Москва, ул.Щербаковская д.3, офис 1107, 1118, ДЦ «Щербаковский»

Телефон: +7 495 668-12-70 (многоканальный)

Факс: +7 495 668-12-70 (доб.304)

E-mail: info@moschip.ru

Skype отдела продаж:

moschip.ru

moschip.ru_4

moschip.ru_6

moschip.ru_9