

# RK10J With Knob Type

Low-profile, dip and reflow solderable



## Typical Specifications



| Items                       | Specifications                    |
|-----------------------------|-----------------------------------|
| Total resistance tolerance  | ±30%                              |
| Maximum operating voltage   | 50V AC, 20V DC (Single-unit only) |
| Total rotational angle      | 270° ± 10°                        |
| Rotational torque           | 0.5 to 10mN·m                     |
| Operating life              | 10,000 cycles                     |
| Operating temperature range | -10°C to +60°C                    |

## Product Line

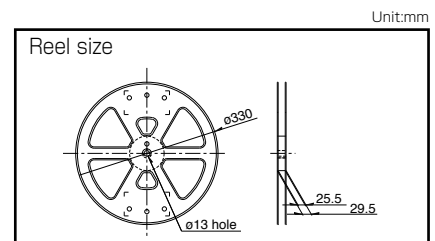
| Number of resistor elements | Knob type  | Total resistance (k Ω) | Resistance taper | Soldering | Mounting type    | For DC use     | Minimum order unit (pcs.) |        | Products No.   | Drawing No. |
|-----------------------------|--|------------------------|------------------|-----------|------------------|----------------|---------------------------|--------|--|-------------|
|                             |  |                        |                  |           |                  |                | Japan                     | Export |  |             |
| Single-unit                 | Knob diameter : φ 14<br>Knob thickness : t0.9<br>Color : Black | 10                     | 1B               | Manual    | Insertion (2mm)  | 20V DC         | 3,000                     | 2,400  | RK10J11E0034<br>RK10J11E002Y<br>RK10J12E0A0A<br>RK10J12E002L<br>RK10J12E0024 | 1           |
|                             |  | 20                     | 3B               |           |                  |                |                           |        |  |             |
| Dual-unit                   |  | 10                     | 15A              |           |                  | Not applicable |                           |        |  |             |
|                             |  | 20                     | 15C              |           |                  |                |                           |        |  |             |
| Single-unit                 | Knob diameter : φ 14<br>Knob thickness : t1.0<br>Color : Black | 10                     | 15A              | Reflow    | Surface mounting | 20V DC         | 3,000                     | 3,000  | RK10J11R001Y<br>RK10J11R0A0H<br>RK10J12R0A0B<br>RK10J12R0052                 | 2           |
|                             |  |                        | 3B               |           |                  |                |                           |        |  |             |
| Dual-unit                   |  |                        | 15A              |           |                  | Not applicable |                           |        |  |             |
|                             |  |                        | 15C              |           |                  |                |                           |        |  |             |

**Notes** Other varieties are also available. Refer to "Other Specifications" (P.373, 374).

## Packing Specifications

Bulk / Taping

| Soldering | Packing specifications | Number of packages (pcs.) |               |                        | Tape width (mm) | Export package measurements (mm) |
|-----------|------------------------|---------------------------|---------------|------------------------|-----------------|----------------------------------|
|           |                        | 1 reel                    | 1 case /Japan | 1 case /export packing |                 |                                  |
| Manual    | Bulk                   | —                         | 3,000         | 2,400                  | —               | 371×250×190                      |
| Reflow    | Taping                 | 1,000                     | 3,000         | 3,000                  | 24              | 401×397×139                      |



## Dimensions

| No. | Photo | Style | PC board mounting hole dimensions (Viewed from mounting side) |
|-----|-------|-------|---|
| 1   |       |       |   |

Refer to P.373 for other specifications.  
Refer to P.375 for ordering products not listed.  
Refer to P.376 for soldering conditions.

■ Dimensions

| No. | Photo | Style | PC board mounting hole dimensions<br>(Viewed from mounting side) |
|-----|-------|-------|--|
| 2   |       |       |  |

■ Circuit Diagram

| Single-unit | Dual-unit | Dual-unit resistance taper 15C |
|-------------|-----------|--------------------------------|
|             |           |                                |

With Knob Type / Other Specifications

In addition to the products listed, we can accommodate the follow specifications.

■ Total Resistance Variety

|                        |    |    |    |     |
|------------------------|----|----|----|-----|
| Total resistance (k Ω) | 10 | 20 | 50 | 100 |
|------------------------|----|----|----|-----|

■ Resistance Taper

|                  |     |    |    |     |
|------------------|-----|----|----|-----|
| Resistance taper | 15A | 1B | 3B | 15C |
|------------------|-----|----|----|-----|

■ Terminal Layout

|   | Resistance taper A or B |           | Resistance taper C |           |
|---|-------------------------|-----------|--------------------|-----------|
|   | Single-unit             | Dual-unit | Single-unit        | Dual-unit |
| <b>10mm Single-unit/ Dual-unit RK10J1 E</b>               |                         |           |                    |           |
| <b>10mm Single-unit/ Dual-unit RK10J1 R (Reflow-type)</b> |                         |           |                    |           |

Refer to P.375 for ordering products not listed.

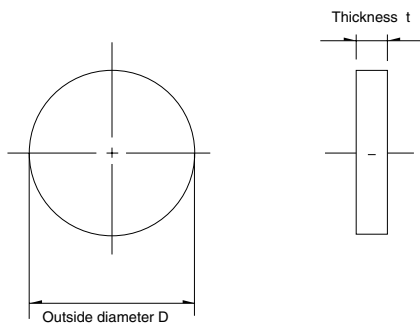
Rotary Potentiometers  
 Slide Potentiometers  
 Metal Shaft  
 Insulated Shaft  
 Knob Operating  
 Through Shaft Type  
 Ring Type

## Mounting Plate Types and Terminal Types

Unit:mm



## Knob Variety



| Applicable models                                   | Knob variety |                  |                | Body thickness (mm) |       |
|---|--------------|------------------|----------------|---------------------|-------|
|   | Type         | Outer diameter D | Thickness (mm) |                     | Color |
| <b>RK10J11E</b><br><b>RK10J12E</b>                  | K4           | $\phi 14$        | 0.9            | Black               | 1.8   |
|   | K5           | $\phi 16$        | 3.0            |                     | 4.0   |
| <b>RK10J11R</b><br><b>RK10J12R</b><br>(Reflow-type) | K1           | $\phi 14$        | 1.0            | Black               | 2.5   |
|   | K2           | $\phi 14$        | 2.5            |                     | 3.8   |
|   | K3           | $\phi 16$        |                |                     |       |

### Note

Marked are specifications recommended by Alps Alpine.

# With Knob Type / Ordering Products Not Listed

When ordering product varieties that are not listed, specify referring to the examples below.

## Sample Part Number

**R K 1 0 J 1 1 R** - **K 1** - **B 2 0 3**

Model type

| Code     | Model type                           |
|----------|--------------------------------------|
| RK10J11E | 10mm size single-unit Insertion type |
| RK10J12E | 10mm size dual-unit Insertion type   |
| RK10J11R | 10mm size single-unit Reflow type    |
| RK10J12R | 10mm size dual-unit Reflow type      |

Shaft type (Outer diameter/Thickness) (mm)

| Code | RK10J1□E | RK10J1□R |
|------|----------|----------|
| K1   | —        | V14 t1.0 |
| K2   | —        | V14 t2.5 |
| K3   | —        | V16 t2.5 |
| K4   | V14 t0.9 | —        |
| K5   | V16 t3.0 | —        |

\*Color : Black

Resistance taper

| Code | Resistance taper | Code | Resistance taper |
|------|------------------|------|------------------|
| A    | 15A              | C    | 15C              |
| B    | 1B               | V    | 3B               |

B: For tone & general  
V: For vol.



Total resistance

| Code | Total resistance (k Ω) | Code | Total resistance (k Ω) |
|------|------------------------|------|------------------------|
| 103  | 10                     | 503  | 50                     |
| 203  | 20                     | 104  | 100                    |








### Note

Marked are specifications recommended by Alps Alpine.

Rotary Potentiometers  
 Slide Potentiometers  
 Metal Shaft  
 Insulated Shaft  
 Knob Operating  
 Through Shaft Type  
 Ring Type

# Knob Operating Type Potentiometers

## List of Varieties

| Type                        | Without knob type   |   |   | With knob type  |   |
|-----------------------------|---|---|---|---|---|
| Series                      | RK08H1 □ 1  | RK08H1 □ 2  | RK08H1 □ 3  | RK10J1 □ E  | RK10J1 □ R  |
|                             | Single-unit/Dual-unit   | Single-unit/Dual-unit   | Single-unit/Dual-unit   | Single-unit/Dual-unit   | Single-unit/Dual-unit   |
| Photo                       |  |  |  |  |  |
| Terminal orientation        | Vertical  | Back-to-back mounting   | Reflow type   | —   | —   |
| Operating temperature range | -10°C to +60°C  |   |   |   |   |
| Operating life              | Without detent 10,000 cycles<br>With detent 5,000 cycles                          |   |   | 10,000 cycles   |   |
| Automotive use              | —   | —   | —   | —   | —   |
| Life cycle                  |  |   |   |  |   |
| Electrical performance      | Total resistance (k Ω)  | 5, 10, 20, 50, 100  |   |   | 10, 20, 50, 100   |
|                             | Resistance taper  | 15A, 1B, 3B, 15C  |   |   |   |
|                             | Rated power   | 0.03W   |   |   |   |
|                             | Insulation resistance   | —   | —   | —   | 100MΩ min. 100V DC  |
|                             | Voltage proof   | —   | —   | —   | 100V AC for 1minute   |
| Mechanical performance      | Detent  | Without / Center detent   |   |   | Without   |
|                             | Stopper strength  | 0.1N  |   |   | 70mN·m  |
|                             | Push-pull strength  | 10N   |   |   | 5N  |
| Terminal style              | Insertion   |   | Reflow  | Insertion   | Reflow  |
| Page                        | 368   |   |   | 372   |   |

### Residual Resistance

※ Applies only to products with specified residual resistance

| Nominal total resistance | ※ Residual resistance                    |
|--------------------------|--|
| 100kΩ ≥ R ≥ 50kΩ         | 0.1% or less of nominal total resistance |
| 50kΩ > R > 10kΩ          | 30Ω or less                              |
| 10kΩ ≥ R                 | 20Ω or less                              |

### Maximum Attenuation

| Nominal total resistance | Maximum attenuation |
|--------------------------|---------------------|
| R ≥ 100kΩ                | 90dB min.           |
| 100kΩ > R ≥ 50kΩ         | 80dB min.           |
| 50kΩ > R ≥ 10kΩ          | 70dB min.           |
| 10kΩ > R                 | 60dB min.           |

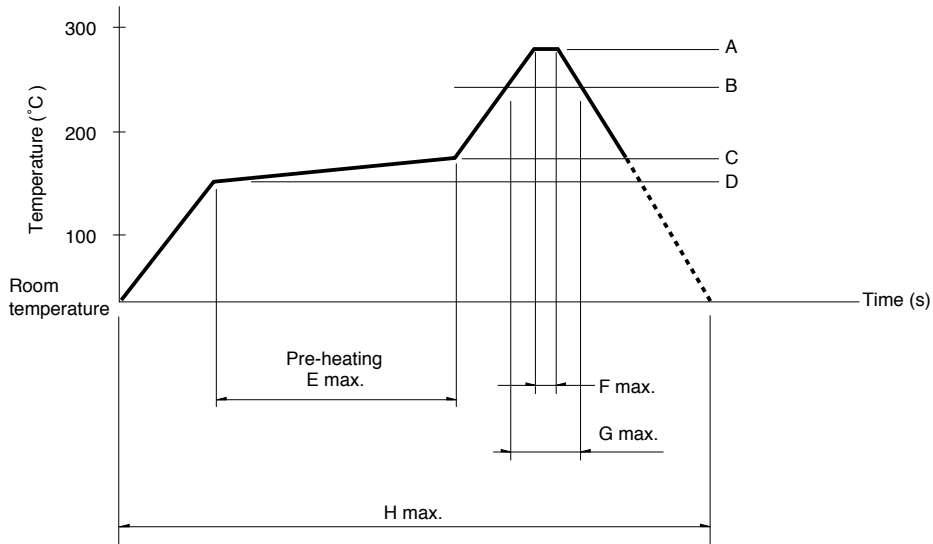
|   |     |
|---|-----|
| Knob Operating Type Potentiometers Soldering Conditions | 376 |
| Potentiometers Cautions                                 | 418 |
| Potentiometers Measurement and Test Methods             | 420 |
| Potentiometers Resistance Taper                         | 422 |

## Reference for Manual Soldering

| Series                           | Tip temperature | Soldering time | No. of solders |
|----------------------------------|-----------------|----------------|----------------|
| <b>RK08H1□1, RK08H1□2, RK10J</b> | 350°C max.      | 3s max.        | 1 time         |

## Example of Reflow Soldering Condition

Temperature profile



| Series                    | A     | B     | C     | D     | E      | F  | G   | H      | No. of reflows |
|---------------------------|-------|-------|-------|-------|--------|----|-----|--------|----------------|
| <b>RK08H1□3, RK10J1□R</b> | 250°C | 200°C | 150°C | 150°C | 2 min. | 3s | 40s | 4 min. | 2 time max.    |

### Notes

1. When using an infrared reflow oven, solder may sometimes not be applied. Be sure to use a hot air reflow oven or a type that uses infrared rays in combination with hot air.
2. The temperatures given above are the maximum temperatures at the terminals of the potentiometer when employing a hot air reflow method. The temperature of the PC board and the surface temperature of the potentiometer may vary greatly depending on the PC board material, its size and thickness. Ensure that the surface temperature of the potentiometer does not rise to 250°C or greater.
3. Conditions vary to some extent depending on the type of reflow bath used. Be sure to give due consideration to this prior to use.

## Данный компонент на территории Российской Федерации

### Вы можете приобрести в компании MosChip.

Для оперативного оформления запроса Вам необходимо перейти по данной ссылке:

<http://moschip.ru/get-element>

Вы можете разместить у нас заказ для любого Вашего проекта, будь то серийное производство или разработка единичного прибора.

В нашем ассортименте представлены ведущие мировые производители активных и пассивных электронных компонентов.

Нашей специализацией является поставка электронной компонентной базы двойного назначения, продукции таких производителей как XILINX, Intel (ex.ALTERA), Vicor, Microchip, Texas Instruments, Analog Devices, Mini-Circuits, Amphenol, Glenair.

Сотрудничество с глобальными дистрибьюторами электронных компонентов, предоставляет возможность заказывать и получать с международных складов практически любой перечень компонентов в оптимальные для Вас сроки.

На всех этапах разработки и производства наши партнеры могут получить квалифицированную поддержку опытных инженеров.

Система менеджмента качества компании отвечает требованиям в соответствии с ГОСТ Р ИСО 9001, ГОСТ РВ 0015-002 и ЭС РД 009

### Офис по работе с юридическими лицами:

105318, г.Москва, ул.Щербаковская д.3, офис 1107, 1118, ДЦ «Щербаковский»

Телефон: +7 495 668-12-70 (многоканальный)

Факс: +7 495 668-12-70 (доб.304)

E-mail: [info@moschip.ru](mailto:info@moschip.ru)

Skype отдела продаж:

moschip.ru

moschip.ru\_4

moschip.ru\_6

moschip.ru\_9