

Single Output 200 to 250W Medical & ITE Power Supplies

Features

- ◆ High Efficiency, up to 94%
- ◆ Industry Standard 3" x 5" Footprint
- ◆ 200W Convection Cooled Rating
- ◆ Suitable for B and BF rated equipment
- ◆ 5V Standby Output



Key Market Segments & Applications



| Specifications | | CUS200M |
|---------------------------------|---------|---|
| Model | | CUS200M |
| AC Input Voltage | VAC | 85 - 265VAC (1) |
| Input Frequency | Hz | 47 - 63Hz |
| Inrush Current (cold start) | A | 35A at 115VAC, 70A at 230VAC |
| Power Factor | - | Meets EN61000-3-2 Class A (Typical PF 0.99/0.95) (2) |
| Input Current (115/230VAC) | A | 200W output: 2.2 / 1.1A; 250W output: 3.0 / 1.5A |
| Off-load Power Draw | W | <0.5W at 230VAC (In standby mode using remote on/off) |
| Temperature Coefficient | %/°C | <0.02%/°C |
| Overcurrent Protection | - | 12V: >17.2A, 18V: > 14.7A, 24V: > 11A, 48V: > 5.5A |
| Overvoltage Protection (3) | V | 12V: 13.2 - 16.2V, 18V: 19.8 - 24.3V, 24V: 26.4 - 32.4V, 48V: 52.8 - 64.8V |
| Hold Up Time (115 / 230V input) | ms | 16ms at 200W output, 12ms at 250W |
| Leakage Current | mA | <0.3mA at 265VAC, 60Hz |
| Remote Sense | - | No |
| Remote On/Off | - | Apply voltage to isolated terminals to shut unit down |
| Power Good | - | Isolated transistor, On = Good. Gives >5ms warning of AC power loss |
| Standby Voltage | - | 5V 0.6A (convection), 1A (forced air) |
| Operating Temperature | °C | -20 to +70°C. Derate linearly to 50% load from +50 to +70°C |
| Storage Temperature | °C | -40 to +85°C |
| Humidity (non condensing) | %RH | 10 - 95%RH (Operating & Storage) |
| Cooling | - | Convection or Forced Air Cooled (1.5m/s across terminals) |
| Withstand Voltage | - | Input to Ground 2kVAC (1xMOPP), Input to Output 4kVAC (2xMOPPs), Output to Ground 1.5kVAC (1xMOPP) suitable for B & BF rated equipment |
| Isolation Resistance | - | >100MΩ at 25°C & 70%RH, Output to Ground 500VDC |
| Vibration (non operating) | - | 10 - 55Hz: 19.6m/s ² constant sweep 1 min X, Y, Z for 1 hour |
| Shock | - | < 196.1 m/s ² (20G) |
| Immunity | - | IEC61000-4-2 (lv 2, 3), -3 (lv3), -4 (lv 3), -5 (lv3, 4), -6 (lv 3), -8 (lv 4), -11 |
| Safety Agency Certifications | - | EN/IEC/UL/ES/CSA 60601-1, EN/IEC/UL/CSA60950-1, CE Mark |
| Conducted & Radiated EMI | - | EN55011-B, EN55022-B, FCC Class B at 200W output |
| Weight (Typ) | g | 350 |
| Size (LxWxH) | mm (in) | 127 x 76.2 x 34mm (5 x 3 x 1.34") |
| Warranty | yrs | Three Years |

Notes:

- (1) Derate linearly to 80% load from 115 to 85VAC input
- (2) 115 / 230VAC input
- (3) Cycle AC to reset

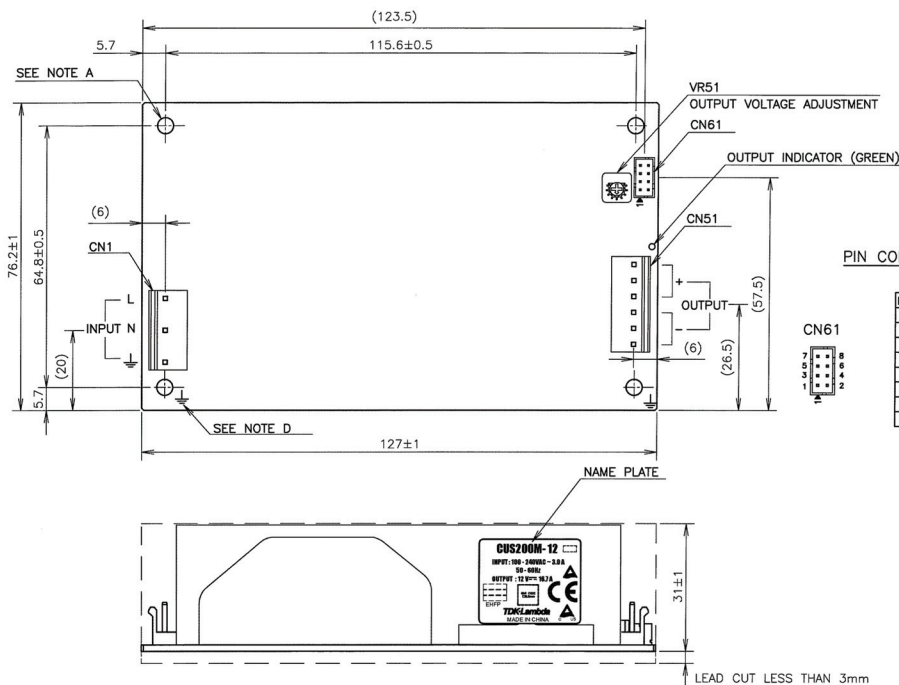
Model Selector

| Model | Voltage | Adjust Range (V) | Max Current Conv (A) | Max Current Forced Air (A) | Max Power Forced Air (W) | Load Reg (mV) | Line Reg (mV) | Ripple Noise (mV) | Efficiency (typ) % ⁽⁴⁾ |
|------------|---------|------------------|----------------------|----------------------------|--------------------------|---------------|---------------|-------------------|-----------------------------------|
| CUS200M-12 | 12V | 11.7 - 12.6 | 16.7 | 16.7 | 200.4 | 120 | 60 | 180 | 92 / 93 |
| CUS200M-18 | 18V | 17.6 - 18.9 | 11.2 | 14.0 | 252.0 | 180 | 90 | 180 | 92 / 94 |
| CUS200M-24 | 24V | 23.5 - 25.2 | 8.4 | 10.5 | 252.0 | 240 | 120 | 240 | 92 / 94 |
| CUS200M-48 | 48V | 47 - 50.4 | 4.2 | 5.3 | 254.4 | 480 | 240 | 480 | 92 / 94 |

Notes:

(4) 115 / 230VAC input with convection cooling

Outline Drawing



PIN CONFIGURATION AND FUNCTIONS OF CN61

| PIN No. | FUNCTION |
|---------|------------------------------|
| 1 | STBY+: STANDBY POWER + (5V+) |
| 2 | STBY-: STANDBY POWER - (5V-) |
| 3 | NO CONNECTION |
| 4 | NO CONNECTION |
| 5 | NO CONNECTION |
| 6 | DC_OK |
| 7 | R+: REMOTE ON/OFF TERMINAL + |
| 8 | R-: REMOTE ON/OFF TERMINAL - |

CONNECTORS USED:

| PART DESCRIPTION | PART NAME | HOUSING | QTY | CONTACT | QTY | CRIMPING TOOL | MANUFACT. |
|-------------------------|-------------------|-----------|-----|----------------|-----|-------------------------|-----------|
| CN1 (INPUT TERMINAL) | B3P5-VH(LF)(SN) | VHR-5N | 1 | SVH-21T-P1.1 | 3 | YC-160R, YC161R, YC164R | J.S.T |
| CN51 (OUTPUT TERMINAL) | B6P-VH(LF)(SN) | VHR-6N | 1 | SVH-41T-P1.1 | 6 | YC-930R | J.S.T |
| CN61 (STANDBY TERMINAL) | B8B-PHDSS(LF)(SN) | PHDR-08VS | 1 | SPHD-001T-P0.5 | 8 | YC-610R, YC611R | J.S.T |

(HOUSINGS, PINS & TOOL ARE NOT INCLUDED WITH THE PRODUCT.)

NOTE:

- A: 4-#3.5 HOLES ARE FOR CUSTOMER'S CHASSIS MOUNTING HOLES. ALL MUST BE SCREWED IN ORDER TO CONFORM THE VIBRATION AND EMI SPEC.
- B: MODEL NAME, INPUT VOLTAGE RANGE, NOMINAL OUTPUT VOLTAGE, AND MAXIMUM OUTPUT CURRENT ARE SHOWN HERE IN ACCORDANCE WITH THE SPECIFICATIONS.
- C: COUNTRY OF MANUFACTURE WILL BE SHOWN HERE.
- D: ↓ IS FOR SAFETY GROUND CONNECTION.

Similar Products

| | |
|--------------|--|
| LS25 - 200 | 25W to 200W low cost |
| HWS15 - 1800 | 15W to 1800W limited lifetime warranty |
| RWS-B | 50W to 600W single output |
| GWS250-500 | 250W to 500W |
| CSS | 65W to 500W medical |
| CUS350M | 350W Medical |
| ZMS100 | 100W Medical |

For Additional Information, please visit us.tdk-lambda.com/lp/products/cus-m-series



Данный компонент на территории Российской Федерации

Вы можете приобрести в компании MosChip.

Для оперативного оформления запроса Вам необходимо перейти по данной ссылке:

<http://moschip.ru/get-element>

Вы можете разместить у нас заказ для любого Вашего проекта, будь то серийное производство или разработка единичного прибора.

В нашем ассортименте представлены ведущие мировые производители активных и пассивных электронных компонентов.

Нашей специализацией является поставка электронной компонентной базы двойного назначения, продукции таких производителей как XILINX, Intel (ex.ALTERA), Vicor, Microchip, Texas Instruments, Analog Devices, Mini-Circuits, Amphenol, Glenair.

Сотрудничество с глобальными дистрибьюторами электронных компонентов, предоставляет возможность заказывать и получать с международных складов практически любой перечень компонентов в оптимальные для Вас сроки.

На всех этапах разработки и производства наши партнеры могут получить квалифицированную поддержку опытных инженеров.

Система менеджмента качества компании отвечает требованиям в соответствии с ГОСТ Р ИСО 9001, ГОСТ РВ 0015-002 и ЭС РД 009

Офис по работе с юридическими лицами:

105318, г.Москва, ул.Щербаковская д.3, офис 1107, 1118, ДЦ «Щербаковский»

Телефон: +7 495 668-12-70 (многоканальный)

Факс: +7 495 668-12-70 (доб.304)

E-mail: info@moschip.ru

Skype отдела продаж:

moschip.ru

moschip.ru_4

moschip.ru_6

moschip.ru_9