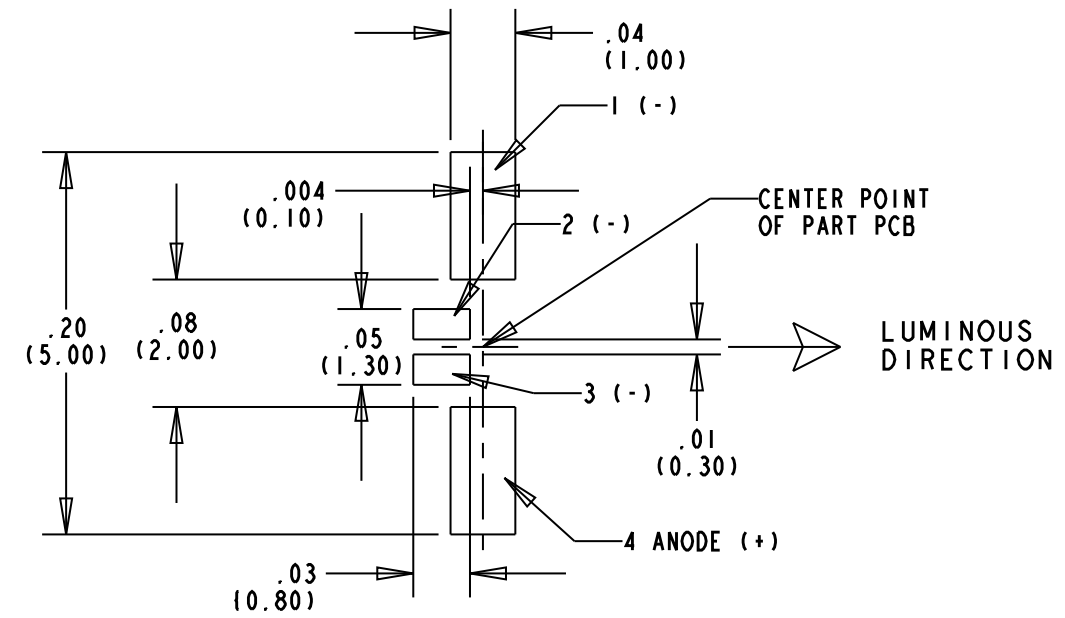
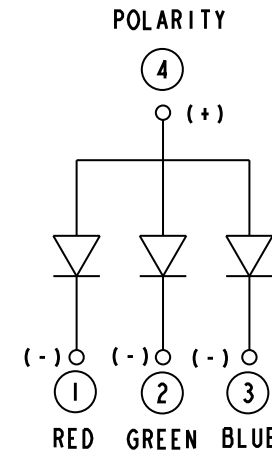
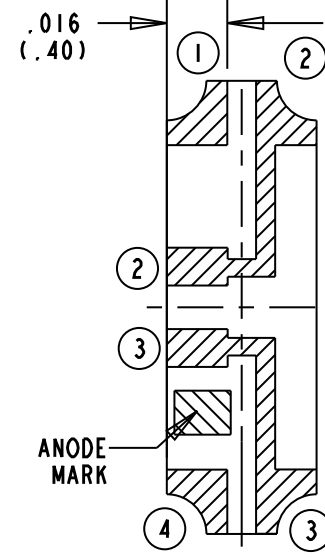
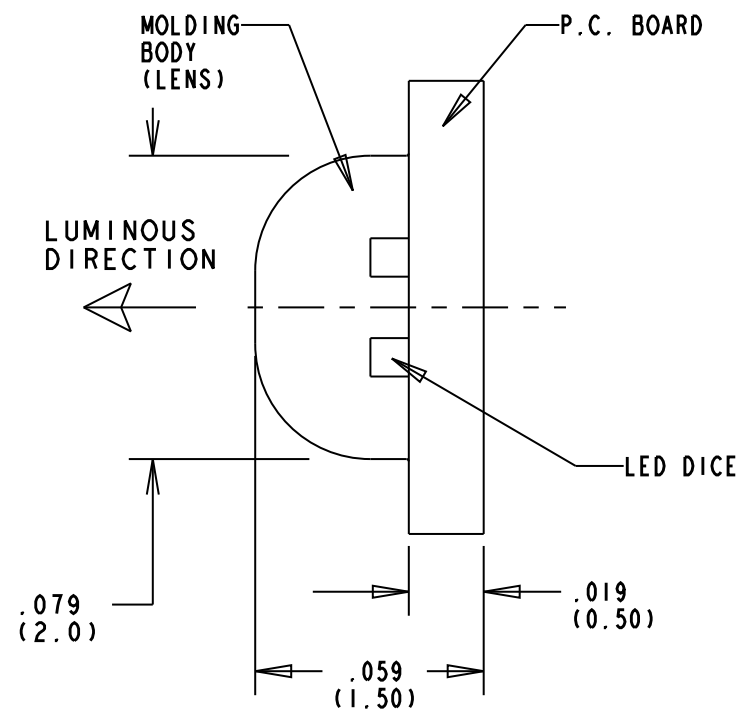
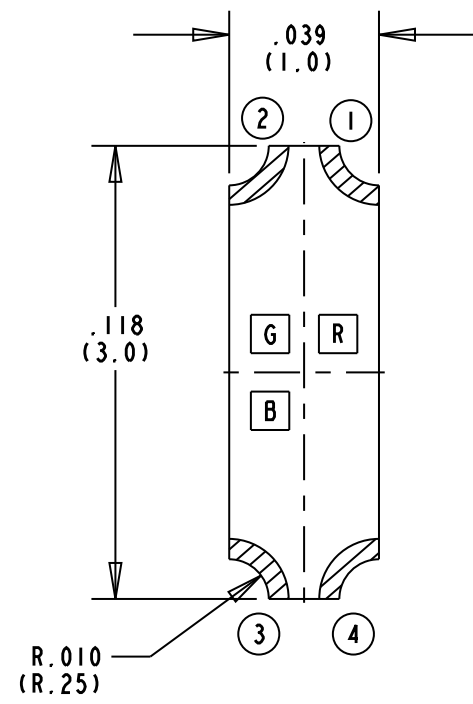
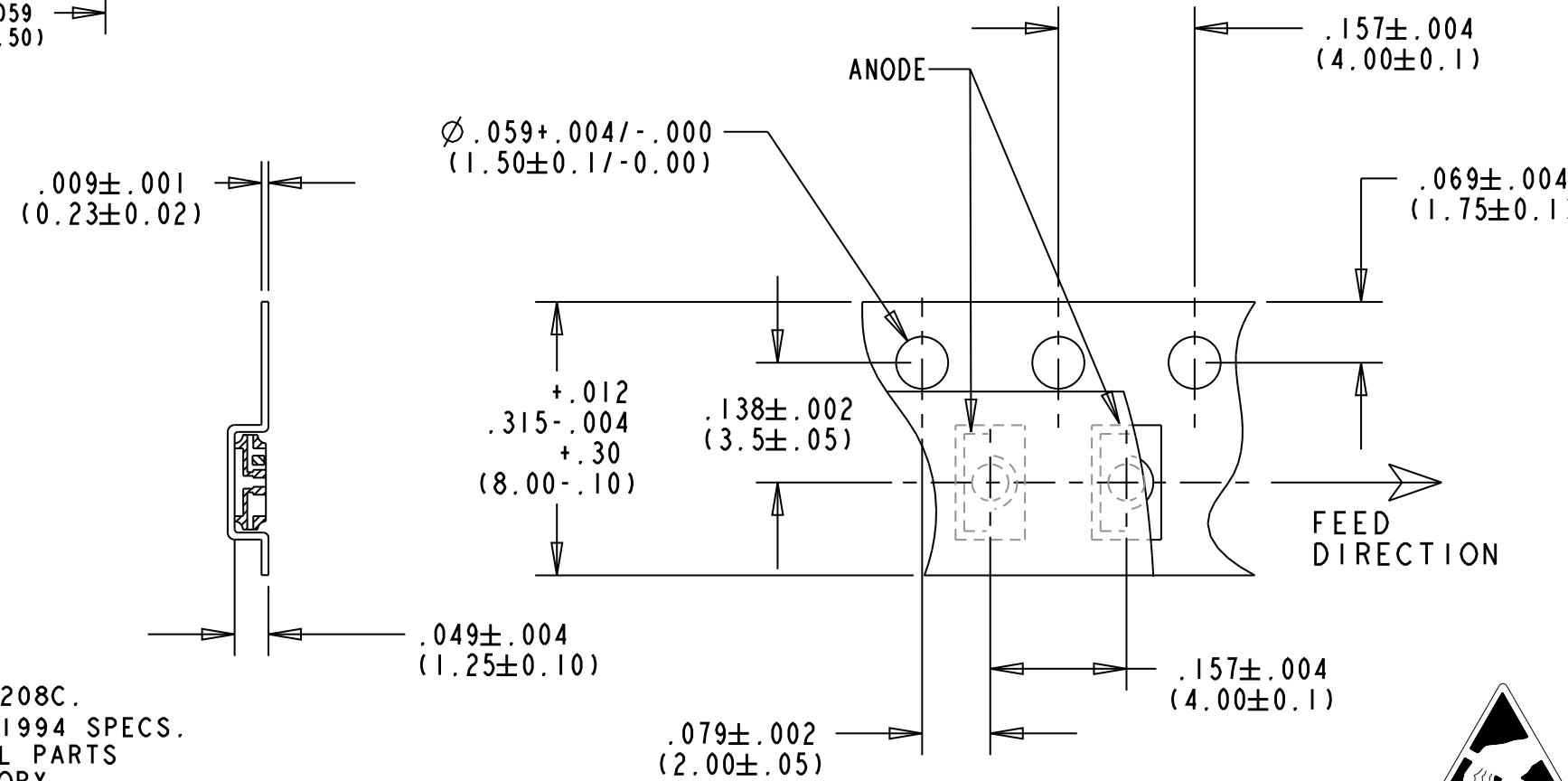


| REV | ECN NO | REVISIONS | DRN | CKD | APP | DATE |
|-----|--------|--|-----|-----|-----|--------|
| A | | NEW RELEASE | TWC | | | |
| B | | MAX INTENSITY FOR GREEN WAS "280"; MAX INTENSITY FOR BLUE WAS "112"; DC FORWARD CURRENT FOR GREEN WAS "30" | AJF | KLJ | NO | 3-8-11 |

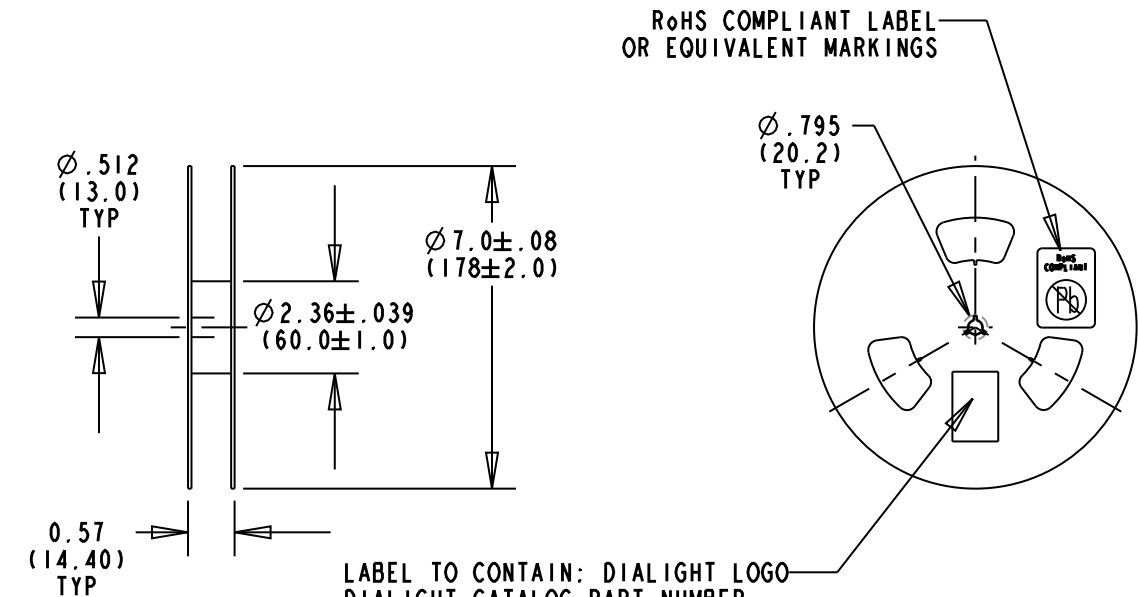
| DIALIGHT CATALOG P/N | COLOR | DOMINANT WAVELENGTH $I_f = 20\text{mA}$ | PEAK EMISSION WAVELENGTH $I_f = 20\text{mA}$ λ_{PK} (nm) | SPECTRAL LINE HALF WIDTH $\Delta\lambda$ (nm) $I_f = 20\text{mA}$ TYP | LUMINOUS INTENSITY (mcd) @ $I_f = 20\text{mA}$; 25°C | | FORWARD VOLTAGE (V) @ $I_f = 20\text{mA}$; 25°C | | REVERSE CURRENT (μA); 25°C | VIEWING ANGLE (2° Ø 1/2 (DEG.)) |
|----------------------|---------------|--|--|--|---|-------|--|------|--|------------------------------------|
| | | | | | MIN. | MAX. | TYP. | MAX. | MAX. | TYP |
| 597-2712-602F | All InGaP RED | 624 | 632 | 20 | 45.0 | 180.0 | 2.0 | 2.4 | 10 @ $V_R = 5\text{V}$ | 130 |
| 597-2712-607F | InGaN GREEN | 525 | 520 | 35 | 112.0 | 450.0 | 3.5 | 3.8 | 10 @ $V_R = 5\text{V}$ | 130 |
| | InGaN BLUE | 470 | 468 | 26 | 28.0 | 180.0 | 3.5 | 3.8 | 10 @ $V_R = 5\text{V}$ | 130 |



RECOMMENDED SOLDERING PAD



TAPING SPECIFICATION
NO SCALE

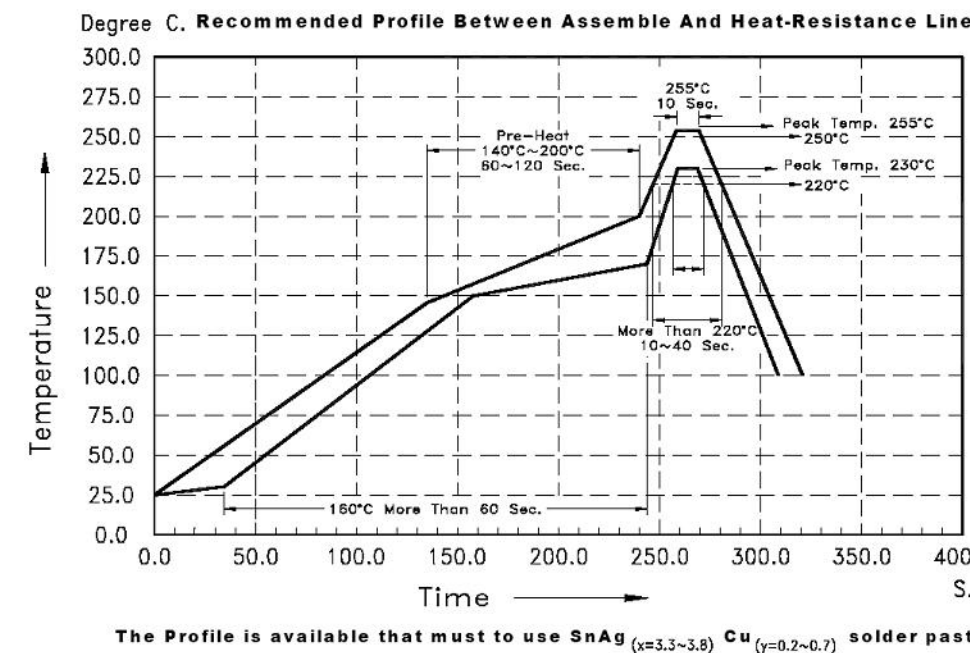


LABEL TO CONTAIN: DIALIGHT LOGO
DIALIGHT CATALOG PART NUMBER,
QUANTITY, DATE OF MANUFACTURE,
LOT NUMBER, RANK OF LUMINOUS
INTENSITY, COUNTRY OF ORIGIN.

ATTENTION:
OBSERVE PRECAUTIONS FOR
HANDLING ELECTROSTATIC
SENSITIVE DEVICES

(QUANTITY: 3,000 PCS/REEL)
REEL SPECIFICATION
NO SCALE

- NOTES:
1. All InGaP FOR RED, InGaN GREEN, InGaN BLUE
 2. EPOXY COLOR: WHITE DIFFUSED
 3. SOLDER PAD: COPPER BASE, GOLD PLATED.
 4. SOLDER ADHERANCE PER MIL. STD. 202E, METHOD 208C.
 5. PARTS TAPED AND REELED PER ANSI/EIA 481-1-A-1994 SPECS.
 6. PARTS SUPPLIED 3,000 PIECES PER REEL WITH ALL PARTS ON ONE REEL FROM SAME LOT AND SAME BIN CATEGORY.
 7. REEL PACKED IN ANTI-HUMIDITY ALUMINIUM FOIL BAG, HEAT SEALED WITH SILICA GEL. LABEL ON BAG TO CONTAIN SAME INFORMATION AS LABEL ON REEL.
 8. DEVICE HAS A MOISTURE SENSITIVITY LEVEL "4" CAUTION LABEL APPLIED AS PER JEDEC STD. .033.
 9. STORAGE CONDITION: 5 TO 30°C @ 70% RH MAX. BAKING IS REQUIRED IF THE PACK HAS BEEN OPENED FOR 72 HOURS OR MORE. BAKING RECOMMENDED CONDITION: 60±5°C FOR 24 HOURS.
 10. TAPE AND REEL LED'S MAY REQUIRE RE-TAPING AFTER TWELVE MONTHS.
 11. DIALIGHT PART NUMBER: 597-2712-602F, AND -607F
 12. THIS ASSEMBLY CONTAINS ELECTROSTATIC DISCHARGE SENSITIVE DEVICES (ESDS). MAINTAIN ALL PRECAUTIONARY MEASURES DURING ASSEMBLY, HANDLING AND STORAGE IN ACCORDANCE WITH IPC-A-610.



RoHS Compliant 597-2712-60XF Surface Mount LED
Part Numbers with the "F" suffix ending are RoHS Compliant.
Example: 597-2712-607F
Packaging is marked with "RoHS Compliant" label or equivalent markings.
Parts can be reflow soldered per RoHS reflow profile, wave soldered, dip soldered or hand soldered using typical lead-free soldering process with max 260°C temp. for 5 sec.

| ABSOLUTE MAXIMUM RATINGS AT 25°C. | RED | GREEN | BLUE | UNITS |
|---|---------------------|-------|------|-------|
| POWER DISSIPATION | 75 | 80 | 80 | mW |
| PEAK FORWARD CURRENT (1/10 DUTY CYCLE, 0.1ms PULSE WIDTH) | 80 | 100 | 100 | mA |
| DC FORWARD CURRENT | 30 | 20 | 20 | mA |
| DERATING LINEAR FROM 25°C | 0.4 | 0.25 | 0.25 | mA/°C |
| REVERSE VOLTAGE | 5 | 5 | 5 | V |
| OPERATING TEMPERATURE RANGE | -20 TO +80 | | | °C |
| STORAGE TEMPERATURE | -30 TO +100 | | | °C |
| INFRARED SOLDERING CONDITION | 260°C FOR 5 SECONDS | | | |

| | | |
|---|---|-----|
| THIS DRAWING AND THE CONTENTS HEREIN ARE CONFIDENTIAL AND THE SOLE PROPERTY OF DIALIGHT. REPRODUCTION OF THIS DRAWING OR CONSTRUCTION OF ANY PARTS WITHIN THIS DRAWING ARE FORBIDDEN WITHOUT THE WRITTEN CONSENT OF DIALIGHT. | | |
| SCALE: 20:1 | DRAWING NUMBER | REV |
| ALL DIM'S IN: INCHES (MM) | C-17214 | B |
| TOLERANCES: UNLESS OTHERWISE SPECIFIED | TITLE R,G,B RIGHT ANGLE SURFACE MOUNT LED, RoHS COMPLIANT | |
| FRACTIONS: ±1/64 | MATERIAL | |
| DECIMALS (.XX): ±.01 | Dialight | |
| DECIMALS (.XXX): ±.005 | 1501 ROUTE 34 SOUTH FARMINGDALE, NJ 07727 | |
| DECIMALS (.XXXX): ±.0005 | FSCM 83330 | |
| ANGLES: ±1° | SHEET 1 OF 1 FAMILY TABLES: | |

Данный компонент на территории Российской Федерации

Вы можете приобрести в компании MosChip.

Для оперативного оформления запроса Вам необходимо перейти по данной ссылке:

<http://moschip.ru/get-element>

Вы можете разместить у нас заказ для любого Вашего проекта, будь то серийное производство или разработка единичного прибора.

В нашем ассортименте представлены ведущие мировые производители активных и пассивных электронных компонентов.

Нашей специализацией является поставка электронной компонентной базы двойного назначения, продукции таких производителей как XILINX, Intel (ex.ALTERA), Vicor, Microchip, Texas Instruments, Analog Devices, Mini-Circuits, Amphenol, Glenair.

Сотрудничество с глобальными дистрибьюторами электронных компонентов, предоставляет возможность заказывать и получать с международных складов практически любой перечень компонентов в оптимальные для Вас сроки.

На всех этапах разработки и производства наши партнеры могут получить квалифицированную поддержку опытных инженеров.

Система менеджмента качества компании отвечает требованиям в соответствии с ГОСТ Р ИСО 9001, ГОСТ РВ 0015-002 и ЭС РД 009

Офис по работе с юридическими лицами:

105318, г.Москва, ул.Щербаковская д.3, офис 1107, 1118, ДЦ «Щербаковский»

Телефон: +7 495 668-12-70 (многоканальный)

Факс: +7 495 668-12-70 (доб.304)

E-mail: info@moschip.ru

Skype отдела продаж:

moschip.ru

moschip.ru_4

moschip.ru_6

moschip.ru_9