

D-SUB HIGH DENSITY

Solder pin – Straight – Precision machined contacts

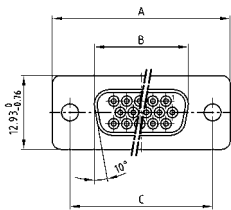


RoHS compliant – CSA listed, File No.: LR 115000-1 – UL listed, File No.: E202784

DESCRIPTION

- Mounting styles:
 - with through-hole, Ø .118" / 3 mm
 - with 4-40 UNC or M3 threaded insert
 - with 4-40 UNC front / M3 threaded rear spacer
 - with M3 front / 4-40 UNC or M3 threaded rear spacer with PCB clip
 - with 4-40 UNC or M3 front and threaded rear spacer with PCB clip
- Quality class 3 (also available in quality class 1)
- Shell: Steel tin plated (brass tin plated or stainless steel available on request)

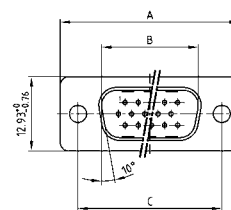
SOCKET CONNECTOR



No. of pos.	A -0.76	B -0.25	C
15	31.19	16.46	25.00 ^{+0.12}
26	39.52	24.79	33.30 ^{+0.15} _{-0.10}
44	53.42	38.50	47.04 ^{+0.13}
62	69.70	54.96	63.50 ^{+0.13}
78	67.31	52.55	61.10 ^{+0.14} _{-0.11}

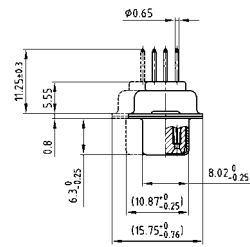
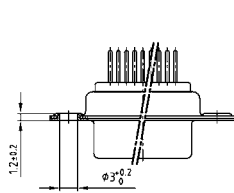
PCB layout: Kat1iT9A

PLUG CONNECTOR

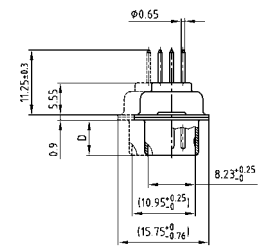
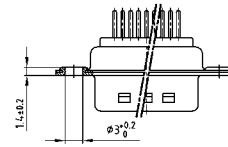


No. of pos.	A -0.76	B +0.25	C	D -0.3
15	31.19	16.79	25.00 ^{+0.12}	6.12
26	39.52	25.12	33.30 ^{+0.15} _{-0.10}	6.12
44	53.42	38.84	47.04 ^{+0.13}	5.99
62	69.70	55.30	63.50 ^{+0.13}	5.99
78	67.31	52.68	61.10 ^{+0.14} _{-0.11}	5.99

PCB layout: Kat1iU0A

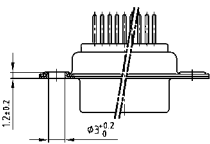


78 pos. = Dim. in (_)



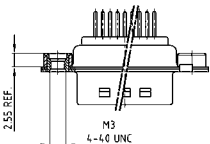
78 pos. = Dim. in (_)

ORDER DATA



SOCKET CONNECTOR		
No. of pos.	Mounting style	Part Number
15	Through-hole	164 A 17159 X
26	Through-hole	164 A 17169 X
44	Through-hole	164 A 17179 X
62	Through-hole	164 A 17189 X
78	Through-hole	164 A 17199 X

PLUG CONNECTOR		
No. of pos.	Mounting style	Part Number
15	Through-hole	163 A 16749 X
26	Through-hole	163 A 16759 X
44	Through-hole	163 A 16769 X
62	Through-hole	163 A 16779 X
78	Through-hole	163 A 16789 X



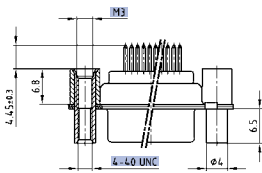
SOCKET CONNECTOR		
No. of pos.	Mounting style	Part Number
15	4-40 UNC Threaded insert	164 A 17209 X
26	4-40 UNC Threaded insert	164 A 17219 X
44	4-40 UNC Threaded insert	164 A 17229 X
62	4-40 UNC Threaded insert	164 A 17239 X
78	4-40 UNC Threaded insert	164 A 17249 X
15	M3 Threaded insert	164 A 17259 X
26	M3 Threaded insert	164 A 17269 X
44	M3 Threaded insert	164 A 17279 X
62	M3 Threaded insert	164 A 17289 X
78	M3 Threaded insert	164 A 17299 X

PLUG CONNECTOR		
No. of pos.	Mounting style	Part Number
15	4-40 UNC Threaded insert	163 A 16799 X
26	4-40 UNC Threaded insert	163 A 16809 X
44	4-40 UNC Threaded insert	163 A 16819 X
62	4-40 UNC Threaded insert	163 A 16829 X
78	4-40 UNC Threaded insert	163 A 16839 X
15	M3 Threaded insert	163 A 16849 X
26	M3 Threaded insert	163 A 16859 X
44	M3 Threaded insert	163 A 16869 X
62	M3 Threaded insert	163 A 16879 X
78	M3 Threaded insert	163 A 16889 X

D-SUB HIGH DENSITY – MOUNTING STYLES

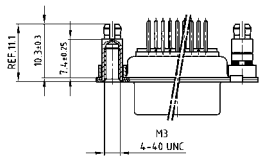
Solder pin – Straight – Precision machined contacts

ORDER DATA



SOCKET CONNECTOR		
No. of pos.	Mounting style	Part Number
15	4-40 UNC Front/M3 Threaded rear spacer	164 A 17309 X
26	4-40 UNC Front/M3 Threaded rear spacer	164 A 17319 X
44	4-40 UNC Front/M3 Threaded rear spacer	164 A 17329 X
62	4-40 UNC Front/M3 Threaded rear spacer	164 A 17339 X
78	4-40 UNC Front/M3 Threaded rear spacer	164 A 17349 X

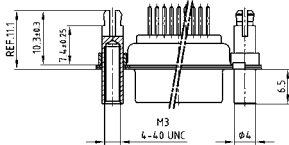
PLUG CONNECTOR		
No. of pos.	Mounting style	Part Number
15	4-40 UNC Front/M3 Threaded rear spacer	163 A 16899 X
26	4-40 UNC Front/M3 Threaded rear spacer	163 A 16909 X
44	4-40 UNC Front/M3 Threaded rear spacer	163 A 16919 X
62	4-40 UNC Front/M3 Threaded rear spacer	163 A 16929 X
78	4-40 UNC Front/M3 Threaded rear spacer	163 A 16939 X



SOCKET CONNECTOR		
No. of pos.	Mounting style	Part Number
15	4-40 UNC Threaded rear spacer PCB clip	164 A 17359 X
26	4-40 UNC Threaded rear spacer PCB clip	164 A 17369 X
44	4-40 UNC Threaded rear spacer PCB clip	164 A 17379 X
62	4-40 UNC Threaded rear spacer PCB clip	164 A 17389 X
78	4-40 UNC Threaded rear spacer PCB clip	164 A 17399 X
15	M3 Threaded rear spacer PCB clip	164 A 17409 X
26	M3 Threaded rear spacer PCB clip	164 A 17419 X
44	M3 Threaded rear spacer PCB clip	164 A 17429 X
62	M3 Threaded rear spacer PCB clip	164 A 17439 X
78	M3 Threaded rear spacer PCB clip	164 A 17449 X

PLUG CONNECTOR		
No. of pos.	Mounting style	Part Number
15	4-40 UNC Threaded rear spacer PCB clip	163 A 16949 X
26	4-40 UNC Threaded rear spacer PCB clip	163 A 16959 X
44	4-40 UNC Threaded rear spacer PCB clip	163 A 16969 X
62	4-40 UNC Threaded rear spacer PCB clip	163 A 16979 X
78	4-40 UNC Threaded rear spacer PCB clip	163 A 16989 X
15	M3 Threaded rear spacer PCB clip	163 A 16999 X
26	M3 Threaded rear spacer PCB clip	163 A 17009 X
44	M3 Threaded rear spacer PCB clip	163 A 17019 X
62	M3 Threaded rear spacer PCB clip	163 A 17029 X
78	M3 Threaded rear spacer PCB clip	163 A 17039 X

PCB clip .122"/3.1 ± .004"/0.10 mm hole diameter and .063"/1.6 mm circuit board thickness



SOCKET CONNECTOR		
No. of pos.	Mounting style	Part Number
15	4-40 UNC Front/Threaded rear spacer PCB clip	164 A 17459 X
26	4-40 UNC Front/Threaded rear spacer PCB clip	164 A 17469 X
44	4-40 UNC Front/Threaded rear spacer PCB clip	164 A 17479 X
62	4-40 UNC Front/Threaded rear spacer PCB clip	164 A 17489 X
78	4-40 UNC Front/Threaded rear spacer PCB clip	164 A 17499 X
15	M3 Front/Threaded rear spacer PCB clip	164 A 17509 X
26	M3 Front/Threaded rear spacer PCB clip	164 A 17519 X
44	M3 Front/Threaded rear spacer PCB clip	164 A 17529 X
62	M3 Front/Threaded rear spacer PCB clip	164 A 17539 X
78	M3 Front/Threaded rear spacer PCB clip	164 A 17549 X

PLUG CONNECTOR		
No. of pos.	Mounting style	Part Number
15	4-40 UNC Front/Threaded rear spacer PCB clip	163 A 17049 X
26	4-40 UNC Front/Threaded rear spacer PCB clip	163 A 17059 X
44	4-40 UNC Front/Threaded rear spacer PCB clip	163 A 17069 X
62	4-40 UNC Front/Threaded rear spacer PCB clip	163 A 17079 X
78	4-40 UNC Front/Threaded rear spacer PCB clip	163 A 17089 X
15	M3 Front/Threaded rear spacer PCB clip	163 A 17099 X
26	M3 Front/Threaded rear spacer PCB clip	163 A 17109 X
44	M3 Front/Threaded rear spacer PCB clip	163 A 17119 X
62	M3 Front/Threaded rear spacer PCB clip	163 A 17129 X
78	M3 Front/Threaded rear spacer PCB clip	163 A 17139 X

PCB clip .122"/3.1 ± .004"/0.10 mm hole diameter and .063"/1.6 mm circuit board thickness

PCB layout: Kat1iT9A

PCB layout: Kat1iU0A

Данный компонент на территории Российской Федерации

Вы можете приобрести в компании MosChip.

Для оперативного оформления запроса Вам необходимо перейти по данной ссылке:

<http://moschip.ru/get-element>

Вы можете разместить у нас заказ для любого Вашего проекта, будь то серийное производство или разработка единичного прибора.

В нашем ассортименте представлены ведущие мировые производители активных и пассивных электронных компонентов.

Нашей специализацией является поставка электронной компонентной базы двойного назначения, продукции таких производителей как XILINX, Intel (ex.ALTERA), Vicor, Microchip, Texas Instruments, Analog Devices, Mini-Circuits, Amphenol, Glenair.

Сотрудничество с глобальными дистрибьюторами электронных компонентов, предоставляет возможность заказывать и получать с международных складов практически любой перечень компонентов в оптимальные для Вас сроки.

На всех этапах разработки и производства наши партнеры могут получить квалифицированную поддержку опытных инженеров.

Система менеджмента качества компании отвечает требованиям в соответствии с ГОСТ Р ИСО 9001, ГОСТ РВ 0015-002 и ЭС РД 009

Офис по работе с юридическими лицами:

105318, г.Москва, ул.Щербаковская д.3, офис 1107, 1118, ДЦ «Щербаковский»

Телефон: +7 495 668-12-70 (многоканальный)

Факс: +7 495 668-12-70 (доб.304)

E-mail: info@moschip.ru

Skype отдела продаж:

moschip.ru

moschip.ru_4

moschip.ru_6

moschip.ru_9