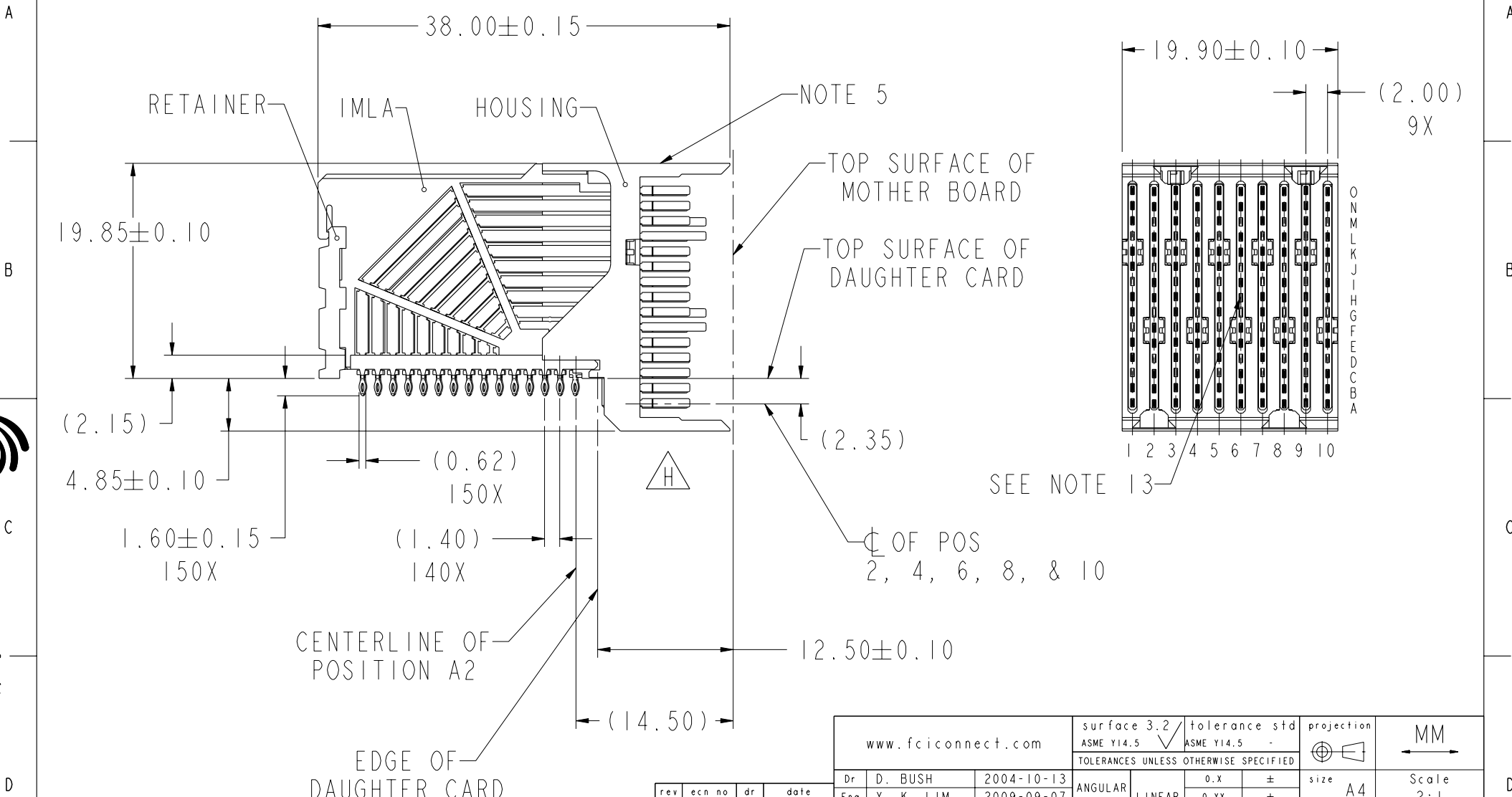


PRODUCT NUMBER
SEE TABLE, SHEET 5



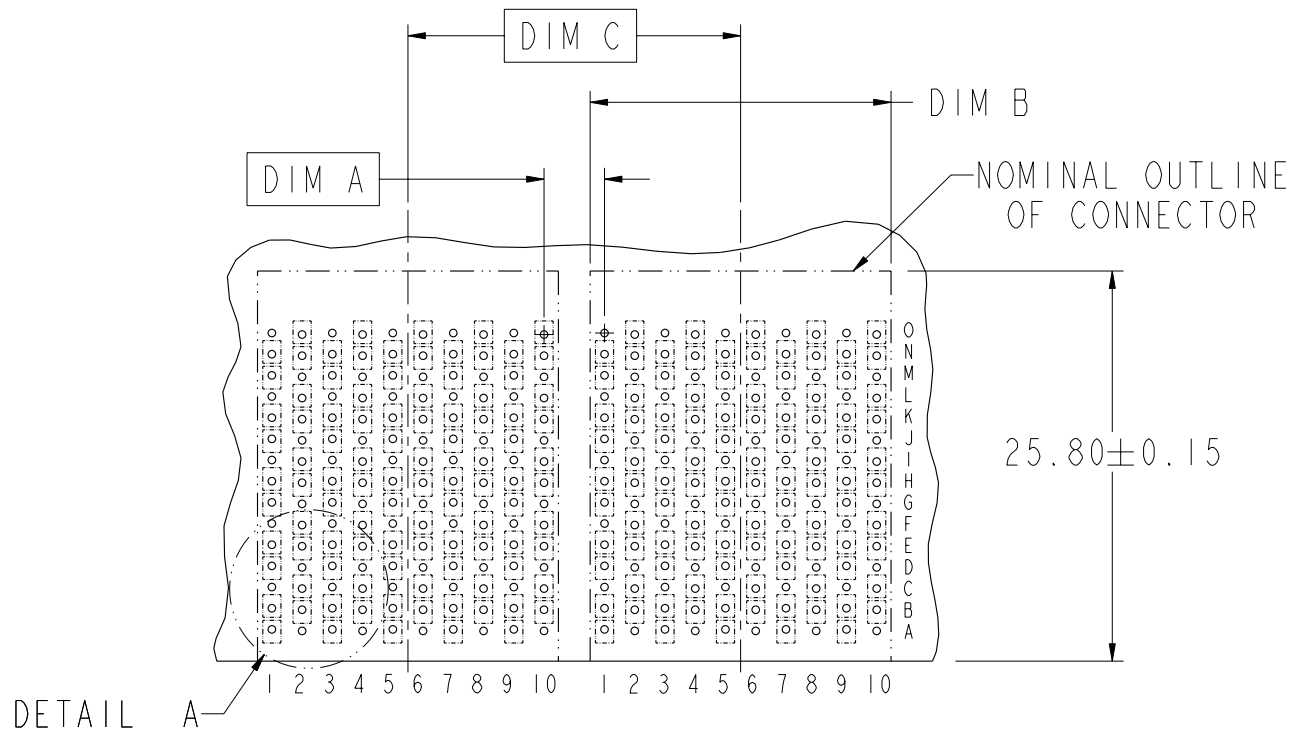
Copyright FCI.

| rev | ecn no | dr | date |
|-----|----------|-----|------------|
| H | S09-0279 | YK | 2009-09-07 |
| - | - | - | - |
| C | V04-1194 | DAB | 2004-12-27 |
| D | V05-0105 | TH | 2005-02-09 |
| E | V05-0226 | MRS | 2005-03-10 |
| F | V05-0748 | CH | 2005-08-23 |
| G | S06-0374 | CH | 2006-12-21 |

| | | | | |
|--------------------|-----------|---------------------------------------|-----------------------------|------------------|
| www.fciconnect.com | | surface 3.2 ASME Y14.5 | tolerance std ASME Y14.5 | projection MM |
| | | TOLERANCES UNLESS OTHERWISE SPECIFIED | | Scale 2:1 |
| Dr | D. BUSH | 2004-10-13 | ANGULAR | size A4 |
| Eng | Y. K. LIM | 2009-09-07 | LINEAR | ECN S09-0279 |
| Chr | Y. K. LIM | 2009-09-07 | 0° ±° | Spec ref |
| Appr | JOEY NG | 2009-09-07 | Product family | AirMax VS |
| FCI | | AirMax VS R/A HEADER ASSY | | dwg no 10016527 |
| | | PRESS-FIT, 150 POS, 20MM | | Rev. H |
| | | catalog no | CUSTOMER | sheet 1 of 5 |

REV F - 2006-04-17

| DESCRIPTION | DIM A | DIM B | DIM C |
|---|-------|------------------------|-------|
| 2-20MM MODULES PLACED END-TO-END | 2.00 | 19.90 2X | 20.00 |
| 1-20MM MODULE & 1-22MM MODULE PLACED END-TO-END | 3.00 | 19.90 1X & 21.90 1X | 21.00 |



RECOMMENDED PCB LAYOUT
FOR DIFFERENTIAL APPLICATIONS
COMPONENT SIDE
(TWO ADJACENT FOOTPRINTS SHOWN)
NOTES 6 & 7



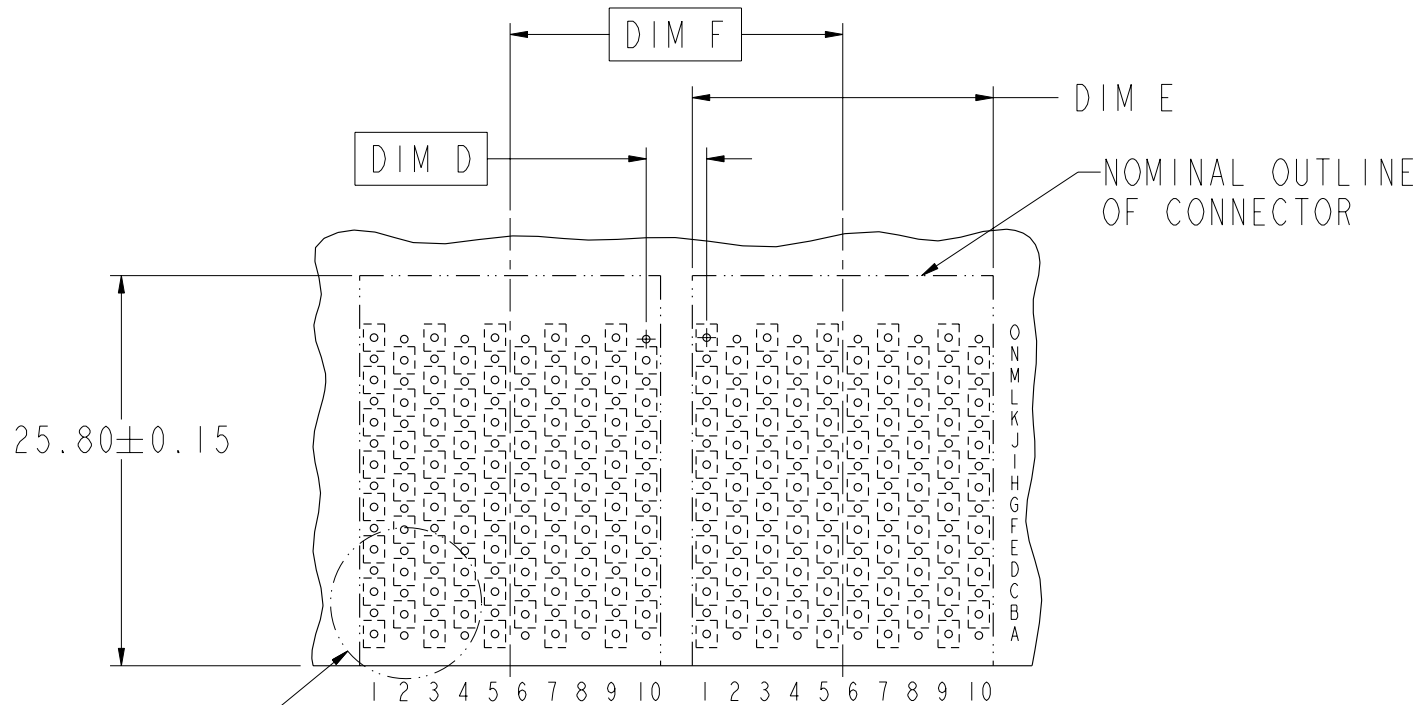
title AirMax VS R/A HEADER ASSY
PRESS-FIT, 150 POS, 20MM
catalog no -

dwg no 10016527

Rev. H

CUSTOMER sheet 2 of 5

| DESCRIPTION | DIM D | DIM E | DIM F |
|---|-------|------------------------|-------|
| 2-20MM MODULES PLACED END-TO-END | 2.00 | 19.90 2X | 20.00 |
| 1-20MM MODULE & 1-22MM MODULE PLACED END-TO-END | 3.00 | 19.90 1X & 21.90 1X | 21.00 |



DETAIL B

RECOMMENDED PCB LAYOUT
FOR SINGLE ENDED APPLICATIONS
COMPONENT SIDE
(TWO ADJACENT FOOTPRINTS SHOWN)
NOTES 6 & 7



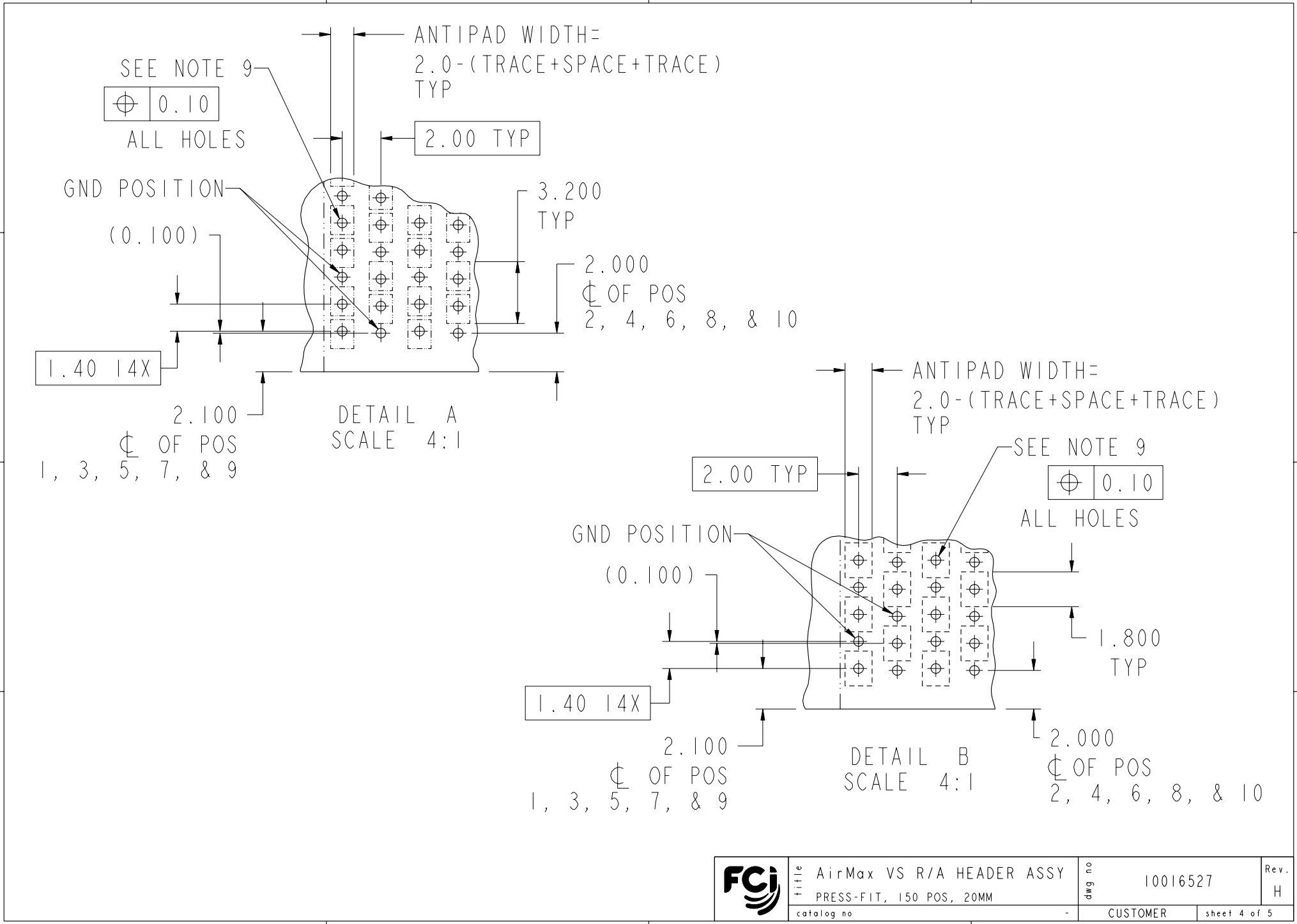
Copyright FCI.



| | | | | | | |
|------------|---------------------------|----------|--------------|----------|------|---|
| Title | AirMax VS R/A HEADER ASSY | | dwg no | 10016527 | Rev. | H |
| | PRESS-FIT, 150 POS, 20MM | | | | | |
| catalog no | - | CUSTOMER | sheet 3 of 5 | | | |



Copyright FCI.



REV F - 2006-04-17



title AirMax VS R/A HEADER ASSY
 PRESS-FIT, 150 POS, 20MM
 catalog no -

dwg no 10016527
 CUSTOMER sheet 4 of 5

Rev. H

| PART NUMBER | PRESS-FIT TAIL PLATING TYPE | SHORT DETECT CONTACT |
|----------------|-----------------------------|----------------------|
| 10016527-101 | TIN/LEAD ALLOY OVER NICKEL | NO |
| 10016527-101LF | TIN OVER NICKEL (LEAD FREE) | |
| 10016527-111 | TIN/LEAD ALLOY OVER NICKEL | YES (SEE NOTE 13) |
| 10016527-111LF | TIN OVER NICKEL (LEAD FREE) | |

NOTES:

1. CONNECTOR MATERIALS:
HOUSING & RETAINER: HIGH TEMP THERMOPLASTIC, NATURAL, UL94V-0
IMLA PLASTIC: HIGH TEMP THERMOPLASTIC, BLACK, UL94V-0
CONTACT: COPPER ALLOY

2. CONTACT PLATING:
SEPARABLE INTERFACE:
PERFORMANCE-BASED PLATING, QUALIFIED TO MEET THE REQUIREMENTS OF FCI PRODUCT SPECIFICATION GS-12-239 INCLUDING TELCORDIA GR-1217-CORE (NOVEMBER 1995) CENTRAL OFFICE TEST SEQUENCE

PRESS-FIT TAILS: SEE TABLE

3. PRODUCT SPECIFICATION: GS-12-239

4. APPLICATION SPECIFICATION: GS-20-035

5. PRODUCT MARKING, (PART NUMBER & LOT CODE), ON THIS SURFACE

6. REFER TO CUSTOMER DRAWING 10035911 FOR INFORMATION REGARDING PCB LAYOUT OF POWER AND GUIDE MODULES RELATIVE TO SIGNAL MODULES

7. POSITIONS F AND L OF ODD NUMBERED COLUMNS AND POSITIONS G AND M OF EVEN NUMBERED COLUMNS CORRESPOND TO EARLY MATE HEADER PINS

8. THERE IS NO GROUND BUSSING WITHIN THE CONNECTOR SYSTEM

9. REFER TO CUSTOMER DRAWING 10045979 FOR INFORMATION ON PCB HOLE DIAMETERS AND PLATING OPTIONS.

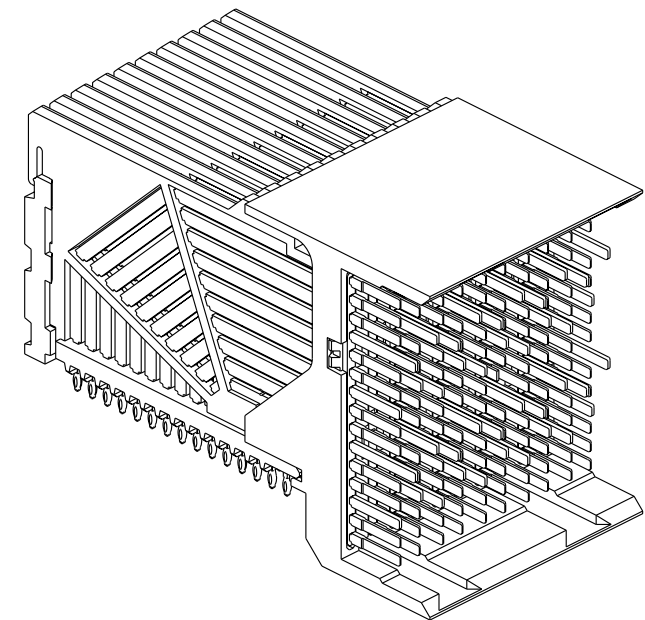
10. LEAD FREE PRODUCT MEETS EUROPEAN UNION DIRECTIVES & OTHER COUNTRY REGULATIONS AS DESCRIBED IN GS-22-008

11. THE HOUSING WILL WITHSTAND EXPOSURE TO 260°C PEAK TEMPERATURE FOR 40 SECONDS IN A CONVECTION, INFRA-RED OR VAPOR PHASE REFLOW OVEN.

12. PACKAGING MEETS GS-14-920 LEAD FREE LABELING SPECIFICATION.

13. MATING PIN H6 HAS 0.5mm LESS WIPE THAN THE SHORTEST SIGNAL PIN.

14. A Δ SYMBOL WILL BE NEXT TO ANY DIMENSION, VIEW, OR NOTE WHICH HAS BEEN MODIFIED WITH THE CURRENT DRAWING REVISION.



| | | | | | | |
|-----|------------|---------------------------|--------|----------|--------------|---|
| FCI | title | AirMax VS R/A HEADER ASSY | dwg no | 10016527 | Rev. | H |
| | catalog no | PRESS-FIT, 150 POS, 20MM | - | CUSTOMER | sheet 5 of 5 | |



Copyright FCI.

Данный компонент на территории Российской Федерации

Вы можете приобрести в компании MosChip.

Для оперативного оформления запроса Вам необходимо перейти по данной ссылке:

<http://moschip.ru/get-element>

Вы можете разместить у нас заказ для любого Вашего проекта, будь то серийное производство или разработка единичного прибора.

В нашем ассортименте представлены ведущие мировые производители активных и пассивных электронных компонентов.

Нашей специализацией является поставка электронной компонентной базы двойного назначения, продукции таких производителей как XILINX, Intel (ex.ALTERA), Vicor, Microchip, Texas Instruments, Analog Devices, Mini-Circuits, Amphenol, Glenair.

Сотрудничество с глобальными дистрибьюторами электронных компонентов, предоставляет возможность заказывать и получать с международных складов практически любой перечень компонентов в оптимальные для Вас сроки.

На всех этапах разработки и производства наши партнеры могут получить квалифицированную поддержку опытных инженеров.

Система менеджмента качества компании отвечает требованиям в соответствии с ГОСТ Р ИСО 9001, ГОСТ РВ 0015-002 и ЭС РД 009

Офис по работе с юридическими лицами:

105318, г.Москва, ул.Щербаковская д.3, офис 1107, 1118, ДЦ «Щербаковский»

Телефон: +7 495 668-12-70 (многоканальный)

Факс: +7 495 668-12-70 (доб.304)

E-mail: info@moschip.ru

Skype отдела продаж:

moschip.ru

moschip.ru_4

moschip.ru_6

moschip.ru_9