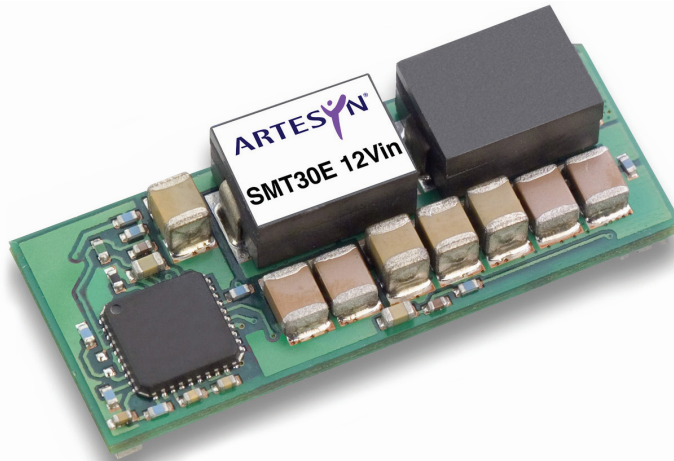


SMT30E Series 12 Vin single output

Total Power: 99W
Input Voltage: 8-14 Vdc
of Outputs: Single



Special Features

- 30 A current rating
- Input voltage range: 8 Vdc to 14 Vdc
- Output voltage range: 0.8 Vdc to 3.63 Vdc
- Ultra high efficiency: 91% @ 12 Vin and 3.3 Vout
- Extremely low internal power dissipation
- Minimal thermal design concerns
- Designed in reliability: MTBF of 3,289,053 hours per Telcordia SR-332
- Ideal solution where board space is at a premium or tighter card pitch is required
- Industry standard surface-mount footprint
- Available RoHS compliant
- 2 year warranty

Safety

- UL/cUL CAN/CSA 22.2 No. E174104
- UL 60950 File No. E174104
- TÜV Product Service (EN60950) Certificate No. B05 06 38572 055
- CB report and certificate to IEC60950

Electrical Specifications

Output		
Voltage adjustability:	0.8 - 3.63 Vdc	
Setpoint accuracy:	±1.3% typ.	
Line regulation:	±0.2% typ.	
Load regulation:	±1.5% typ.	
Total error band:	±3.0% typ.	
Overshoot / undershoot:	None	
Ripple and noise:	5 Hz to 20 MHz	60 mV pk-pk 25 mV rms
Transient coefficient:	±0.01% / °C typ.	
Transient response: Slew rate = 0.5 A μ s	1.5 Vout	50% to 75% load step 3% max. deviation 10 μ s recovery to within ±1.0

Input		
Input voltage range:	8 - 14 Vdc	
Input current:	No load (max.)	250 mA
Input current (max.):	9.2 A max. @ Io max. and $V_{out} = 3.3 V$	
Input reflected ripple:	220 mA rms	
Remote ON/OFF:	(See note 1)	
Start-up time:	20 ms	

EMC Characteristics	
Electrostatic discharge:	EN61000-4-2, IEC801-2
Conducted immunity:	EN61000-4-6
Radiated immunity:	EN61000-4-3

General Specifications		
Efficiency:	@ 12 Vin, 3.3 Vout	91% typ.
Insulation voltage:		Non-isolated
Switching frequency:	Fixed	1.3 MHz typ.
Approvals and standards:		EN60950-1 UL/cUL60950-1
Material flammability:		UL94V-0
Dimensions:	(Lx W x H)	33.02 x 13.46 x 8.10 mm 1.3 x 0.53 x 0.319 inches
Weight:		6.3 g (0.22 oz.)
Coplanarity:		100 μ m
MTBF:	Telcordia SR-332	3,289,053 hours

Environmental Specifications

Thermal performance:	Operating ambient, temperature	-40 °C to +85 °C
	Non-operating	-40 °C to +125 °C
MSL:	JEDEC J-STD-020C	Level 3

Protection		
Short-circuit:		Continuous
Thermal:		Automatic recovery

Ordering Information

Output Power (max)	Input Voltage	Output Voltage ⁽¹¹⁾	Output Current (min)	Output Current (max)	Maximum Load (typ)	Regulation		Model Numbers ^(12, 13)
						Line	Load	
99 W	8 - 14 Vdc	0.8-3.63 V	0 A	30 A	91%	±0.2%	±1.5%	SMT30E-12W3V3J

All specifications are typical 12 Vin and 1.5 V_{OUT}, full load at 25 °C unless otherwise stated. C_{OUT} = 100µF

Part Number System with Options

Product Family	Rated Output Current	Performance	Input Voltage	Type of Output	Output Voltage	Packaging Options
SMT	30	E	12	W	3V3	TJ
SMT = Surface Mount	06 = 6 A	E = Enhanced Performance	12 = 8 Vdc to 14 Vdc	W = Wide	0.8 Vdc to 3.63 Vdc	No 'T' suffix = Pb-free RoHS 6/6 compliant parts in trays e.g. SMT30E-12W3V3J -TJ = PB-free RoHS 6/6 compliant part in Tape and Reel e.g. SMT30E-12W3v3-TJ

Output Voltage Adjustment of the SMT30E-12W3V3J Series

The ultra-wide output voltage trim range offers major advantages to users who select the SMT30E-12W3V3J. It is no longer necessary to purchase a variety of modules in order to cover different output voltages. The output voltage can be trimmed in a range of 0.8 Vdc to 3.63 Vdc. When the SMT30E-12W3V3J converter leaves the factory the output has been adjusted to the default voltage of 0.8 V.

Notes

- The SMT30E features a 'Positive Logic' Remote ON/OFF operation. If not using the Remote ON/OFF pin, leave the pin open (the converter will be on). The Remote ON/OFF pin is referenced to ground.

The following conditions apply for the SMT30E:

Configuration	Converter Operation
Remote pin open circuit	Unit is ON
Remote pin pulled low [Von/off < 0.8 V]	Unit is OFF
Remote pin pulled high [Von/off > 2.8 V]	Unit is ON

A 'Negative Logic' Remote ON/OFF version is also possible with this converter. To order please place the suffix 'R' towards the end of the model number, e.g. SMT30E-12W3V3-TRJ.

- TSE RoHS 5/6 (non Pb-free) compliant versions may be available on special request, please contact your local sales representative for details.
- NOTICE: Some models do not support all options. Please contact your local Emerson Network Power representative or use the on-line model number search tool at <http://www.powerconversion.com> to find a suitable alternative.

Notes

- The derating curves represent the condition at which internal components are within the Emerson Network Power derating guidelines.
- Characteristic data has been developed from actual products tested at 25 °C. This data is considered typical data for the converter.

Specifications

All specifications are typical at nominal input, full load at 25 °C unless otherwise stated.

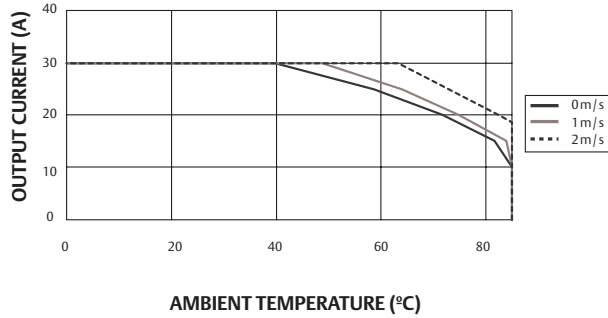


Figure 1 - Derating Curve
Vin = 12 V, Output Voltage = 1.0 V (See Note A)

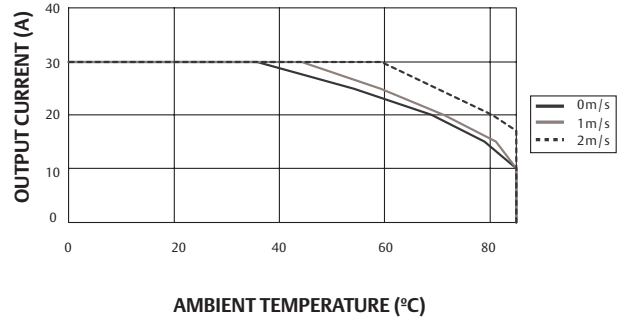


Figure 2 - Derating Curve
Vin = 12 V, Output Voltage = 1.5 V (See Note A)

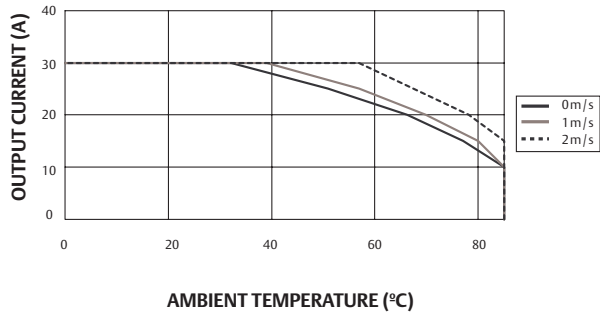


Figure 3 - Derating Curve
Vin = 12 V, Output Voltage = 1.8 V (See Note A)

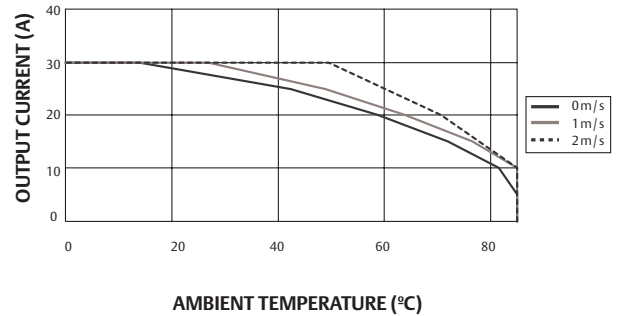


Figure 4 - Derating Curve
Vin = 12 V, Output Voltage = 2.5 V (See Note A)

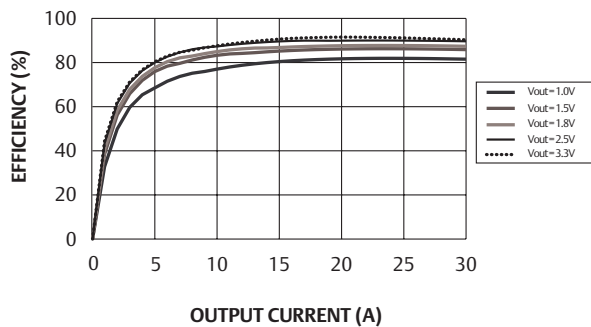


Figure 5 - Efficiency vs Load Current
Vin = 12 V (See Note B)

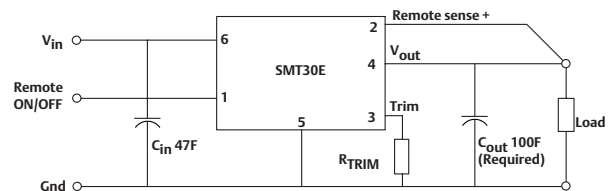
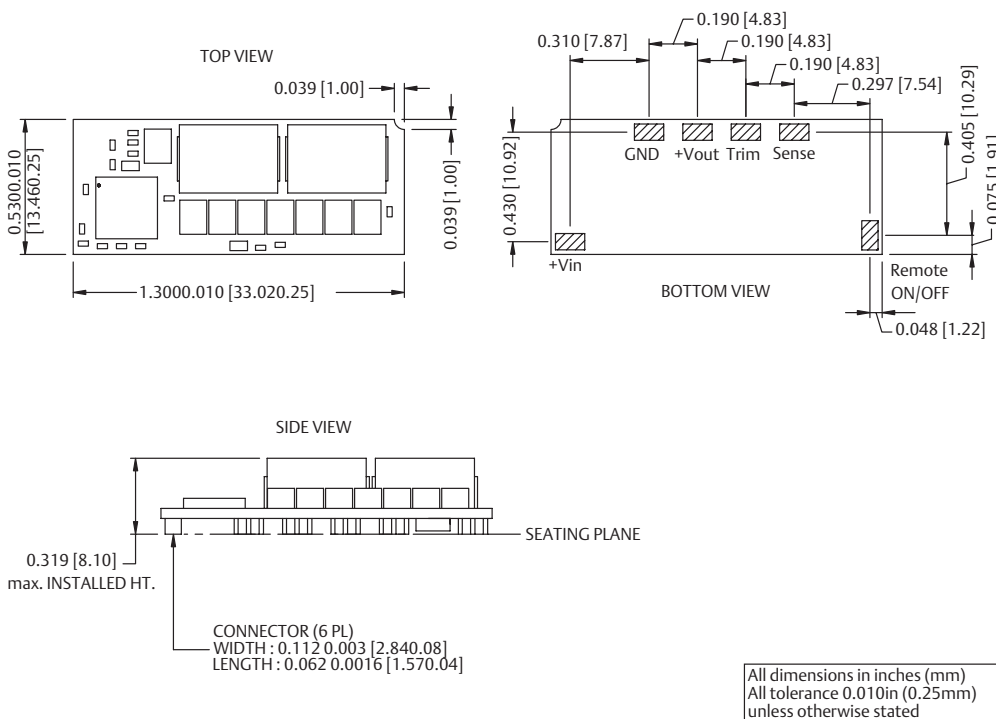


Figure 6 - Standard Application

Mechanical Drawing



Pin connections

Pin Number	Function
1	Remote ON/OFF
2	Remote Sense
3	Trim
4	+Vout
5	GND
6	+Vin

Figure 7 - Mechanical Drawing and Pinout Table

Americas

5810 Van Allen Way
 Carlsbad, CA 92008
 USA
 Telephone: +1 760 930 4600
 Facsimile: +1 760 930 0698

Europe (UK)

Waterfront Business Park
 Merry Hill, Dudley
 West Midlands, DY5 1LX
 United Kingdom
 Telephone: +44 (0) 1384 842 211
 Facsimile: +44 (0) 1384 843 355

Asia (HK)

14/F, Lu Plaza
 2 Wing Yip Street
 Kwun Tong, Kowloon
 Hong Kong
 Telephone: +852 2176 3333
 Facsimile: +852 2176 3888

For global contact, visit:

www.powerconversion.com

techsupport.embeddedpower@emerson.com

While every precaution has been taken to ensure accuracy and completeness in this literature, Emerson Network Power assumes no responsibility, and disclaims all liability for damages resulting from use of this information or for any errors or omissions.

Emerson Network Power.

The global leader in enabling business-critical continuity.

- AC Power
- Connectivity
- DC Power
- Embedded Computing
- **Embedded Power**
- Monitoring
- Outside Plant
- Power Switching & Controls
- Precision Cooling
- Racks & Integrated Cabinets
- Services
- Surge Protection

EmersonNetworkPower.com

Emerson Network Power and the Emerson Network Power logo are trademarks and service marks of Emerson Electric Co.
 ©2008 Emerson Electric Co.

Данный компонент на территории Российской Федерации

Вы можете приобрести в компании MosChip.

Для оперативного оформления запроса Вам необходимо перейти по данной ссылке:

<http://moschip.ru/get-element>

Вы можете разместить у нас заказ для любого Вашего проекта, будь то серийное производство или разработка единичного прибора.

В нашем ассортименте представлены ведущие мировые производители активных и пассивных электронных компонентов.

Нашей специализацией является поставка электронной компонентной базы двойного назначения, продукции таких производителей как XILINX, Intel (ex.ALTERA), Vicor, Microchip, Texas Instruments, Analog Devices, Mini-Circuits, Amphenol, Glenair.

Сотрудничество с глобальными дистрибьюторами электронных компонентов, предоставляет возможность заказывать и получать с международных складов практически любой перечень компонентов в оптимальные для Вас сроки.

На всех этапах разработки и производства наши партнеры могут получить квалифицированную поддержку опытных инженеров.

Система менеджмента качества компании отвечает требованиям в соответствии с ГОСТ Р ИСО 9001, ГОСТ РВ 0015-002 и ЭС РД 009

Офис по работе с юридическими лицами:

105318, г.Москва, ул.Щербаковская д.3, офис 1107, 1118, ДЦ «Щербаковский»

Телефон: +7 495 668-12-70 (многоканальный)

Факс: +7 495 668-12-70 (доб.304)

E-mail: info@moschip.ru

Skype отдела продаж:

moschip.ru

moschip.ru_4

moschip.ru_6

moschip.ru_9