

## ■ For Overcurrent Protection

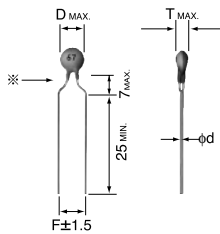


Fig. 1 (Formed Lead Type : Y)

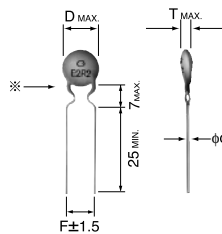


Fig. 2 (Formed Lead Type : U)

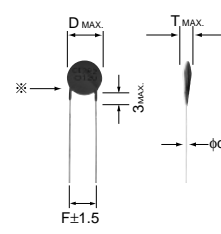


Fig. 3 (Formed Straight)

※: An internal element may be exposed. However, this would not affect the function of products.

### ●12V Class

Type No.	Initial Resistance (at 25°C)	Max. Operating Voltage	Max. Inrush Current	Current Characteristic		Dimensions (mm)				Fig.			
				Normal Current (60°C)	Limiting Current (-10°C)	D	T	F	d				
ZPC11CE2R2A	2.2Ω ±20%	16V	2.1A	300mA or less	760mA or more	5.5	3.0	5.0	0.5	1			
ZPC12CE1R8A	1.8Ω ±20%		2.4A	330mA or less	830mA or more	6.3							
ZPC13CE1R5B	1.5Ω ±20%		3.0A	410mA or less	1030mA or more	7.0							
ZPC15CE1R0B	1.0Ω ±20%		3.6A	520mA or less	1300mA or more	8.0							
ZPC17CE0R8B	0.8Ω ±20%		4.1A	600mA or less	1490mA or more	8.8							
ZPC1CC0R5D	0.5Ω ±20%		5.0A	730mA or less	1830mA or more	10.6							
ZPC1MCC0R3B	0.3Ω ±20%		7.0A	1030mA or less	2580mA or more	14.5							
ZPC15CE1R0B	1.0Ω ±20%	35V	3.6A	520mA or less	1300mA or more	8.0	3.5	5.0	0.6	2			
ZPC17CE0R8B	0.8Ω ±20%		4.1A	600mA or less	1490mA or more	8.8							
ZPC1CC0R5D	0.5Ω ±20%		5.0A	730mA or less	1830mA or more	10.6							
ZPC1MCC0R3B	0.3Ω ±20%		7.0A	1030mA or less	2580mA or more	14.5							
ZPC25CE8R2A	8.2Ω ±20%		1.3A	120mA or less	310mA or more	8.0					10.0	0.6	3
ZPC29CE6R8A	6.8Ω ±20%		1.4A	200mA or less	510mA or more	9.7							
ZPC29CE4R7A	4.7Ω ±20%	1.6A	230mA or less	570mA or more	9.7								
ZPC2DCE4R7A	4.7Ω ±20%	1.8A	270mA or less	680mA or more	11.4								
ZPC2DCE3R9A	3.9Ω ±20%	1.9A	280mA or less	700mA or more	11.4								
ZPC2ECE3R9A	3.9Ω ±20%	2.1A	300mA or less	760mA or more	11.9								
ZPC2ECE3R3A	3.3Ω ±20%	2.2A	310mA or less	790mA or more	11.9								
ZPC2LCE2R7A	2.7Ω ±20%	2.5A	370mA or less	930mA or more	14.3								
ZPC2LCE2R2A	2.2Ω ±20%	2.8A	400mA or less	1020mA or more	14.3								
ZPC2RCE2R2A	2.2Ω ±20%	3.1A	450mA or less	1150mA or more	15.9								
ZPC2RCE1R8A	1.8Ω ±20%	3.4A	500mA or less	1250mA or more	15.9								

### ●25V Class

Type No.	Initial Resistance (at 25°C)	Max. Operating Voltage	Max. Inrush Current	Current Characteristic		Dimensions (mm)				Fig.
				Normal Current (60°C)	Limiting Current (-10°C)	D	T	F	d	
ZPC32CE240D	24Ω ±20%	60V	0.7A	100mA or less	250mA or more	6.5	4.5	5.0	0.5	1
ZPC35CE150A	15Ω ±20%		0.9A	130mA or less	320mA or more	8.0				
ZPC3ACE8R2C	8.2Ω ±20%		1.3A	190mA or less	480mA or more	10.1				
ZPC3DCE6R2C	6.2Ω ±20%		1.5A	220mA or less	560mA or more	11.4				
ZPC3HCE4R7A	4.7Ω ±20%		1.9A	270mA or less	690mA or more	13.0				
ZPC3MCE3R6A	3.6Ω ±20%		2.2A	310mA or less	790mA or more	14.7				
ZPC3RCE3R0A	3.0Ω ±20%		2.5A	370mA or less	920mA or more	15.9				
ZPC42CE560A	56Ω ±20%	140V	0.5A	65mA or less	160mA or more	7.0	6.0	5.0	0.5	3
ZPC45CE300B	30Ω ±20%		0.7A	100mA or less	250mA or more	8.7				
ZPC49CE220A	22Ω ±20%		1.0A	130mA or less	340mA or more	10.4				
ZPC4CCE150A	15Ω ±20%		1.1A	160mA or less	410mA or more	11.7				
ZPC4MCE100A	10Ω ±20%		1.5A	210mA or less	540mA or more	15.3				
ZPC4PCE6R8A	6.8Ω ±20%		1.8A	260mA or less	660mA or more	16.2				
ZPC4RCE5R0A	5Ω ±20%		3.5A	290mA or less	730mA or more	16.8				
ZPC59CE390A	39Ω ±20%	265V	0.8A	100mA or less	250mA or more	10.0	10.0	5.0	0.6	3
ZPC5JCE270A	27Ω ±20%		1.2A	140mA or less	350mA or more	14.0				

### ●50V Class

Type No.	Initial Resistance (at 25°C)	Max. Operating Voltage	Max. Inrush Current	Current Characteristic		Dimensions (mm)				Fig.
				Normal Current (60°C)	Limiting Current (-10°C)	D	T	F	d	
ZPC42CE560A	56Ω ±20%	140V	0.5A	65mA or less	160mA or more	7.0	6.0	5.0	0.5	3
ZPC45CE300B	30Ω ±20%		0.7A	100mA or less	250mA or more	8.7				
ZPC49CE220A	22Ω ±20%		1.0A	130mA or less	340mA or more	10.4				
ZPC4CCE150A	15Ω ±20%		1.1A	160mA or less	410mA or more	11.7				
ZPC4MCE100A	10Ω ±20%		1.5A	210mA or less	540mA or more	15.3				
ZPC4PCE6R8A	6.8Ω ±20%		1.8A	260mA or less	660mA or more	16.2				
ZPC4RCE5R0A	5Ω ±20%		3.5A	290mA or less	730mA or more	16.8				
ZPC59CE390A	39Ω ±20%	265V	0.8A	100mA or less	250mA or more	10.0	10.0	5.0	0.6	3
ZPC5JCE270A	27Ω ±20%		1.2A	140mA or less	350mA or more	14.0				

### ●100V, 120V, 220V Class

Type No.	Initial Resistance (at 25°C)	Max. Operating Voltage	Max. Inrush Current	Current Characteristic		Dimensions (mm)				Fig.
				Normal Current (60°C)	Limiting Current (-10°C)	D	T	F	d	
ZPC42CE560A	56Ω ±20%	140V	0.5A	65mA or less	160mA or more	7.0	6.0	5.0	0.5	3
ZPC45CE300B	30Ω ±20%		0.7A	100mA or less	250mA or more	8.7				
ZPC49CE220A	22Ω ±20%		1.0A	130mA or less	340mA or more	10.4				
ZPC4CCE150A	15Ω ±20%		1.1A	160mA or less	410mA or more	11.7				
ZPC4MCE100A	10Ω ±20%		1.5A	210mA or less	540mA or more	15.3				
ZPC4PCE6R8A	6.8Ω ±20%		1.8A	260mA or less	660mA or more	16.2				
ZPC4RCE5R0A	5Ω ±20%		3.5A	290mA or less	730mA or more	16.8				
ZPC59CE390A	39Ω ±20%	265V	0.8A	100mA or less	250mA or more	10.0	10.0	5.0	0.6	3
ZPC5JCE270A	27Ω ±20%		1.2A	140mA or less	350mA or more	14.0				

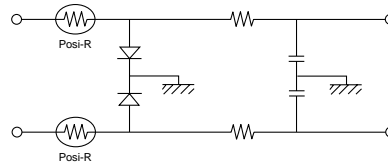
●Other current values are also available upon request.

## ■ For Overcurrent Protection in Telecommunications Equipment.

### ■ Features

1. This type responds quickly as having low heat capacity.
2. Noise shall not be generated as this is a non-contact type.
3. Once "Posi-R" is operated, it keeps protecting unless switch is turned off.
4. "Posi-R" returns to the original resistance level by turning off the switch and can be used repeatedly, after abnormal conditions are removed.  
(There is no need to exchange.)

### ■ Examples of applications



Type No.	Initial Resistance (at 25°C)	Max. Operating Voltage	Max. Inrush Current	Current Characteristic		Dimensions (mm)				Fig.
				Normal Current (60°C)	Limiting Current (-10°C)	D	T	F	d	
ZPC2CBX1R0B	1Ω ±20%	33V	2.4A	290mA-p-p or less	900mA-p-p or more	11.5	3.5	5.0	0.5	2
ZPC47BX100B	10Ω ±20%	56V	1.0A	100mA-p-p or less	330mA-p-p or more	9.0	5.0		0.6	1
ZPC4RCE5R0A	5Ω ±20%	120V	3.5A	290mA-p-p or less	730mA-p-p or more	16.8	6.0	10.0	0.65	3
ZPC4MCE100A	10Ω ±20%	140V	1.5A	210mA-p-p or less	540mA-p-p or more	15.3			0.6	
ZPC52CE121A	120Ω ±20%	265V	0.3A	40mA-p-p or less	100mA-p-p or more	6.5	5.0	5.0	0.5	1

## Данный компонент на территории Российской Федерации

### Вы можете приобрести в компании MosChip.

Для оперативного оформления запроса Вам необходимо перейти по данной ссылке:

<http://moschip.ru/get-element>

Вы можете разместить у нас заказ для любого Вашего проекта, будь то серийное производство или разработка единичного прибора.

В нашем ассортименте представлены ведущие мировые производители активных и пассивных электронных компонентов.

Нашей специализацией является поставка электронной компонентной базы двойного назначения, продукции таких производителей как XILINX, Intel (ex.ALTERA), Vicor, Microchip, Texas Instruments, Analog Devices, Mini-Circuits, Amphenol, Glenair.

Сотрудничество с глобальными дистрибьюторами электронных компонентов, предоставляет возможность заказывать и получать с международных складов практически любой перечень компонентов в оптимальные для Вас сроки.

На всех этапах разработки и производства наши партнеры могут получить квалифицированную поддержку опытных инженеров.

Система менеджмента качества компании отвечает требованиям в соответствии с ГОСТ Р ИСО 9001, ГОСТ РВ 0015-002 и ЭС РД 009

### Офис по работе с юридическими лицами:

105318, г.Москва, ул.Щербаковская д.3, офис 1107, 1118, ДЦ «Щербаковский»

Телефон: +7 495 668-12-70 (многоканальный)

Факс: +7 495 668-12-70 (доб.304)

E-mail: [info@moschip.ru](mailto:info@moschip.ru)

Skype отдела продаж:

moschip.ru

moschip.ru\_4

moschip.ru\_6

moschip.ru\_9