



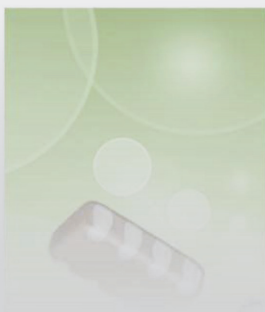
MULTILAYER CERAMIC CHIP CAPACITORS



CLL Series Commercial Grade Ultra Low Inductance

Type: CLLC1A [EIA CC0603]
 CLLE1A [EIA CC0805]
 CLLG1A [EIA CC1206]

Issue date:
April 2013



REMINDERS

Please read before using this product

SAFETY REMINDERS

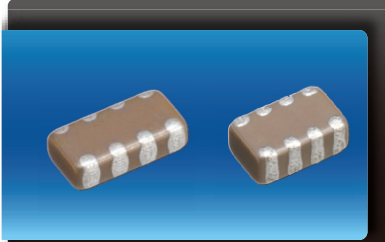
REMINDERS

1. If you intend to use a product listed in this catalog for a purpose that may cause loss of life or other damage, you must contact our company's sales window.
2. We may modify products or discontinue production of a product listed in this catalog without prior notification.
3. We provide "Delivery Specification" that explain precautions for the specifications and safety of each product listed in this catalog. We strongly recommend that you exchange these delivery specifications with customers that use one of these products.
4. If you plan to export a product listed in this catalog, keep in mind that it may be a restricted item according to the "Foreign Exchange and Foreign Trade Control Law". In such cases, it is necessary to acquire export permission in harmony with this law.
5. Any reproduction or transferring of the contents of this catalog is prohibited without prior permission from our company.
6. We are not responsible for problems that occur related to the intellectual property rights or other rights of our company or a third party when you use a product listed in this catalog. We do not grant license of these rights.
7. This catalog only applies to products purchased through our company or one of our company's official agencies. This catalog does not apply to products that are purchased through other third parties.

Notice : Effective January 2013, TDK will use a new catalog part number which adds product thickness and packaging specification detail. This new part number should be referenced on all catalog orders going forward, and is not applicable for OEM part number orders. Please be aware the last five digits of the TDK catalog part number will differ from the TDK item description (internal control number) on the product label. Contact your local TDK Sales representative for more information.

(Example)

| Catalog Issued date | TDK Part Number (In Catalog) | TDK Item Description (On Delivery Label) |
|------------------------|------------------------------|--|
| Prior to January 2013 | C1608C0G1E103J | C1608C0G1E103JT000N |
| January 2013 and Later | C1608C0G1E103J080AA | C1608C0G1E103JT000N |



CLL Series Ultra Low Inductance

Type: CLLC1A [EIA CC0603], CLLE1A [EIA CC0805],
CLLG1A [EIA CC1206]



Features



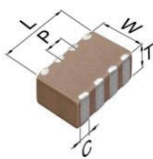
- Features a unique internal structure that cancels magnetic fields to reduce equivalent series inductance.
- Eight side terminal electrodes in one capacitor.
- Small and low profile design enables undersurface mounting for semiconductor packages.

Applications



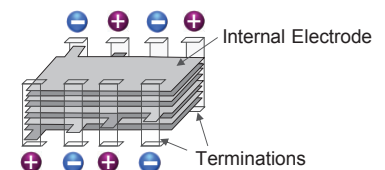
- Decoupling CPU power line
- High speed digital IC, decoupling
- GPU, CPU

Shape & Dimensions



| | |
|---|------------------|
| L | Body Length |
| W | Body Width |
| T | Body Height |
| C | Terminal Width |
| P | Terminal Spacing |

Design Structure



Part Number Construction

CLL • E1A • X7S • 0G • 685 • M • 050 • A • C

Series Name

Dimensions L x W (mm)

| Code | Length | Width |
|------|-------------|-------------|
| C1A | 1.60 ± 0.10 | 0.80 ± 0.10 |
| E1A | 2.00 ± 0.15 | 1.25 ± 0.15 |
| G1A | 3.20 ± 0.15 | 1.60 ± 0.15 |

Temperature Characteristics

| Temperature Characteristics | Capacitance Change | Temperature Range |
|-----------------------------|--------------------|-------------------|
| X6S | ±22% | -55 to +105°C |
| X7R | ±15% | -55 to +125°C |
| X7S | ±22% | -55 to +125°C |

Rated Voltage (DC)

| Code | Voltage (DC) |
|------|--------------|
| 0G | 4.0V |
| 0J | 6.3V |
| 1A | 10V |

Nominal Capacitance (pF)

The capacitance is expressed in three digit codes and in units of pico Farads (pF). The first and second digits identify the first and second significant figures of the capacitance. The third digit identifies the multiplier. R designates a decimal point.

Ex. 0R2 = 0.2pF; 103 = 10,000pF; 105 = 1,000,000pF = 100nF = 1μF

Capacitance Tolerance

| Code | Tolerance |
|------|-----------|
| M | ± 20% |

Nominal Thickness

| Code | Thickness |
|------|-----------|
| 050 | 0.50 mm |
| 055 | 0.55 mm |
| 085 | 0.85 mm |

Packaging Style

| Code | Style |
|------|----------------------|
| A | 178" Reel, 4mm Pitch |

Special Reserved Code

| Code | Description |
|------|-------------------|
| C | TDK Internal Code |



Capacitance Range Chart

CLLC1A(1608) [EIA CC0603]

Capacitance Range Chart

Temperature Characteristics: X6S (± 22%), X7R (±15%), X7S (± 22%)
 Rated Voltage: 4V (0G)

| Capacitance (pF) | Code | Tolerance | X6S | X7R | X7S |
|------------------|------|-----------|---------|---------|---------|
| | | | 0G (4V) | 0G (4V) | 0G (4V) |
| 47,000 | 473 | M: ± 20% | | | |
| 100,000 | 104 | | | | |
| 330,000 | 334 | | | | |
| 470,000 | 474 | | | | |
| 680,000 | 684 | | | | |
| 1,000,000 | 105 | | | | |
| 2,200,000 | 225 | | | | |
| 4,700,000 | 475 | | | | |
| | | | | | |



Capacitance Range Chart

CLLE1A(2012) [EIA CC0805]

Capacitance Range Chart

Temperature Characteristics: X7R (±15%), X7S (± 22%)
 Rated Voltage: 10V (1A), 6.3V (0J), 4V (0G)

| Capacitance (pF) | Code | Tolerance | X7R | | | X7S | | |
|------------------|------|-----------|----------|-----------|---------|----------|-----------|---------|
| | | | 1A (10V) | 0J (6.3V) | 0G (4V) | 1A (10V) | 0J (6.3V) | 0G (4V) |
| 47,000 | 473 | M: ± 20% | | | | | | |
| 100,000 | 104 | | | | | | | |
| 150,000 | 154 | | | | | | | |
| 220,000 | 224 | | | | | | | |
| 330,000 | 334 | | | | | | | |
| 470,000 | 474 | | | | | | | |
| 680,000 | 684 | | | | | | | |
| 1,000,000 | 105 | | | | | | | |
| 1,500,000 | 155 | | | | | | | |
| 2,200,000 | 225 | | | | | | | |
| 4,700,000 | 475 | | | | | | | |
| 6,800,000 | 685 | | | | | | | |
| | | | | | | | | |
| | | | | | | | | |
| | | | | | | | | |



Capacitance Range Chart

CLLG1A(3216) [EIA CC1206]

Capacitance Range Chart

Temperature Characteristics: X7R (±15%),
 Rated Voltage: 10V (1A), 6.3V (0J)

| Capacitance (pF) | Code | Tolerance | X7R | |
|------------------|------|-----------|----------|-----------|
| | | | 1A (10V) | 0J (6.3V) |
| 1,000,000 | 105 | M: ± 20% | | |
| 2,200,000 | 225 | | | |

Standard Thickness

- 0.50 mm
- 0.85 mm



Capacitance Range Table

Class 2 (Temperature Stable)

Temperature Characteristics: X6S (-55 to +105°C, ±22%)

| Capacitance | Size | Thickness (mm) | Capacitance Tolerance | TDK Part Number | | |
|-------------|------|----------------|-----------------------|------------------------|-------------------------|-------------------------|
| | | | | Rated Voltage Edc: 10V | Rated Voltage Edc: 6.3V | Rated Voltage Edc: 4.0V |
| 4.7 µF | 1608 | 0.50 ± 0.05 | ± 20% | | | CLLC1AX6S0G475M050AC |

Class 2 (Temperature Stable)

Temperature Characteristics: X7R (-55 to +125°C, ±15%)

| Capacitance | Size | Thickness (mm) | Capacitance Tolerance | TDK Part Number | | |
|-------------|------|------------------|-----------------------|------------------------|-------------------------|-------------------------|
| | | | | Rated Voltage Edc: 10V | Rated Voltage Edc: 6.3V | Rated Voltage Edc: 4.0V |
| 47 nF | 2012 | 0.50 ± 0.05 | ± 20% | | | CLLE1AX7R0G473M050AC |
| | 1608 | 0.50 ± 0.05 | ± 20% | | | CLLC1AX7R0G104M050AC |
| 100 nF | 2012 | 0.50 +0.05/-0.10 | ± 20% | CLLE1AX7R1A104M050AC | | |
| | | 0.50 ± 0.05 | ± 20% | | | CLLE1AX7R0G104M050AC |
| 150 nF | 2012 | 0.50 +0.05/-0.10 | ± 20% | CLLE1AX7R1A154M050AC | | |
| 220 nF | 2012 | 0.50 +0.05/-0.10 | ± 20% | CLLE1AX7R1A224M050AC | | |
| 330 nF | 2012 | 0.50 +0.05/-0.10 | ± 20% | CLLE1AX7R1A334M050AC | | |
| 470 nF | 2012 | 0.50 +0.05/-0.10 | ± 20% | | CLLE1AX7R0J474M050AC | |
| 680 nF | 2012 | 0.50 +0.05/-0.10 | ± 20% | | CLLE1AX7R0J684M050AC | |
| 1 µF | 2012 | 0.85 ± 0.10 | ± 20% | | CLLE1AX7R0J105M085AC | CLLE1AX7R0G105M085AC |
| | 3216 | 0.85 ± 0.10 | ± 20% | CLLG1AX7R1A105M085AC | | |
| 1.5 µF | 2012 | 0.85 ± 0.10 | ± 20% | | CLLE1AX7R0J155M085AC | |
| 2.2 µF | 3216 | 0.85 ± 0.10 | ± 20% | | CLLG1AX7R0J225M085AC | |

Class 2 (Temperature Stable)

Temperature Characteristics: X7S (-55 to +125°C, ±22%)

| Capacitance | Size | Thickness (mm) | Capacitance Tolerance | TDK Part Number | | |
|-------------|------|------------------|-----------------------|------------------------|-------------------------|-------------------------|
| | | | | Rated Voltage Edc: 10V | Rated Voltage Edc: 6.3V | Rated Voltage Edc: 4.0V |
| 47 nF | 1608 | 0.50 ± 0.05 | ± 20% | | | CLLC1AX7S0G473M050AC |
| | 2012 | 0.50 ± 0.05 | ± 20% | | | CLLE1AX7S0G473M050AC |
| 100 nF | 1608 | 0.50 ± 0.05 | ± 20% | | | CLLC1AX7S0G104M050AC |
| | 2012 | 0.50 ± 0.05 | ± 20% | | | CLLE1AX7S0G104M050AC |
| 150 nF | 2012 | 0.50 ± 0.05 | ± 20% | CLLE1AX7S1A154M050AC | | |
| 220 nF | 2012 | 0.50 ± 0.05 | ± 20% | CLLE1AX7S1A224M050AC | | |
| 330 nF | 1608 | 0.50 +0.05/-0.10 | ± 20% | | | CLLC1AX7S0G334M050AC |
| | 2012 | 0.50 ± 0.05 | ± 20% | CLLE1AX7S1A334M050AC | | |
| 470 nF | 1608 | 0.50 +0.05/-0.10 | ± 20% | | | CLLC1AX7S0G474M050AC |
| | 2012 | 0.50 ± 0.05 | ± 20% | | CLLE1AX7S0J474M050AC | |
| 680 nF | 1608 | 0.50 +0.05/-0.10 | ± 20% | | | CLLC1AX7S0G684M050AC |
| | 2012 | 0.50 ± 0.05 | ± 20% | | CLLE1AX7S0J684M050AC | |
| 1 µF | 1608 | 0.50 +0.05/-0.10 | ± 20% | | | CLLC1AX7S0G105M050AC |
| | 2012 | 0.50 +0.05/-0.10 | ± 20% | | | CLLE1AX7S0G105M050AC |
| 1.5 µF | 2012 | 0.50 +0.05/-0.10 | ± 20% | | | CLLE1AX7S0G155M050AC |
| | | 0.85 ± 0.10 | ± 20% | | CLLE1AX7S0J155M085AC | |
| 2.2 µF | 1608 | 0.50 ± 0.05 | ± 20% | | | CLLC1AX7S0G225M050AC |
| | | 0.50 +0.05/-0.10 | ± 20% | | | CLLE1AX7S0G225M050AC |
| | | 0.85 ± 0.10 | ± 20% | | | CLLE1AX7S0G225M085AC |
| 4.7 µF | 2012 | 0.50 ± 0.05 | ± 20% | | | CLLE1AX7S0G475M050AC |
| | | 0.85 ± 0.10 | ± 20% | | | CLLE1AX7S0G475M085AC |
| 6.8 µF | 2012 | 0.50 ± 0.05 | ± 20% | | | CLLE1AX7S0G685M050AC |

Данный компонент на территории Российской Федерации

Вы можете приобрести в компании MosChip.

Для оперативного оформления запроса Вам необходимо перейти по данной ссылке:

<http://moschip.ru/get-element>

Вы можете разместить у нас заказ для любого Вашего проекта, будь то серийное производство или разработка единичного прибора.

В нашем ассортименте представлены ведущие мировые производители активных и пассивных электронных компонентов.

Нашей специализацией является поставка электронной компонентной базы двойного назначения, продукции таких производителей как XILINX, Intel (ex.ALTERA), Vicor, Microchip, Texas Instruments, Analog Devices, Mini-Circuits, Amphenol, Glenair.

Сотрудничество с глобальными дистрибьюторами электронных компонентов, предоставляет возможность заказывать и получать с международных складов практически любой перечень компонентов в оптимальные для Вас сроки.

На всех этапах разработки и производства наши партнеры могут получить квалифицированную поддержку опытных инженеров.

Система менеджмента качества компании отвечает требованиям в соответствии с ГОСТ Р ИСО 9001, ГОСТ РВ 0015-002 и ЭС РД 009

Офис по работе с юридическими лицами:

105318, г.Москва, ул.Щербаковская д.3, офис 1107, 1118, ДЦ «Щербаковский»

Телефон: +7 495 668-12-70 (многоканальный)

Факс: +7 495 668-12-70 (доб.304)

E-mail: info@moschip.ru

Skype отдела продаж:

moschip.ru

moschip.ru_4

moschip.ru_6

moschip.ru_9