



# Accessories

Carefully selected accessories complement the Altech/Spelsberg Enclosure family. A full line, including connectors for wire, cable, or conduit; ground/neutral busbars, mounting plates and hardware, locks, hinge kits, DIN rails, terminal block assemblies and more are available to enhance the overall design capabilities.

Altech/Spelsberg has the right accessories to make your job easier.

- Liquid Tight Strain Relief connectors and connector assemblies
- Mounting plates
- DIN rail support racks
- DIN rails
- Enclosure mounting screws
- Key lock sets
- Hinge kits
- Cover plates
- Combination kits, flange type
- Ground/neutral busbars



**Combination Kits**

Used to combine series specific enclosures to make larger units. Connect horizontally or vertically.

**Fitting Type Combination Kit**

Threaded with locknut seal for connecting sidewalls. Fits standard Metric knockouts. Drilling template included to ensure enclosure ingress integrity.

**Pin Type Combination Set**

For combining AK and AKL Series Enclosures for 150mm and 300mm sides.



**Din Rails**

DIN rails allow for mounting DIN Terminal Blocks and other control components. All required hardware included.

**TS15x5 mm / for TK+Abox Series**

**TS15x5 mm / for TG Series**

(mounting hardware comes with enclosure)



**TS35x7.5 mm / for TK+Abox Series**

**TS35x7.5 mm / for TG Series**

(mounting hardware comes with enclosure)

**TS35x7.5 mm / Special Variants**

**TS35x7.5 mm / for AL Series**

| Type    | Wall Thickness For Series | Cat. No. | Std. Pack |
|---------|---------------------------|----------|-----------|
| CK/M20  | 2x3 mm                    | 192-020  | 1         |
| CK/M25  | 2x3 mm                    | 192-025  | 1         |
| CK/M32  | 2x3.5 mm                  | 192-032  | 1         |
| CK/AKII | AK, AKL                   | 791-001  | 1         |

| Type      | For Series   | Cat. No. | Std. Pack |
|-----------|--------------|----------|-----------|
| TS15/49.5 | TK77, 97     | 197-049  | 1         |
| TS15/80   | TK97, 99     | 197-080  | 1         |
| TS15/92   | TK1111       | 197-092  | 1         |
| TS15/111  | TK1309, 1313 | 197-111  | 1         |
| TS15/154  | TK1809       | 197-154  | 1         |
| TS15/68   | TG88         | 197-069  | 1         |
| TS15/106  | TG1208       | 197-107  | 1         |
| TS15/110  | TG1212       | 197-110  | 1         |
| TS15/146  | TG1608, 1612 | 197-146  | 1         |
| TS15/186  | TG2012       | 197-186  | 1         |
| TS15/170  | TG2015       | 197-170  | 1         |
| TS15/222  | TG2516       | 197-222  | 1         |
| TS15/285  | TG3023       | 197-285  | 1         |

|          |                                 |         |   |
|----------|---------------------------------|---------|---|
| TS35/81  | TK1111, Abox060                 | 198-081 | 1 |
| TS35/106 | TK1309, 1313, Abox100, HP150    | 198-106 | 1 |
| TS35/144 | TK1809, 1811, 1813, 1818, HP190 | 198-144 | 1 |
| TS35/144 | Abox160                         | 894-016 | 1 |
| TS35/216 | TK2518                          | 198-216 | 1 |
| TS35/216 | Abox350                         | 894-035 | 1 |
| TS35/336 | TK3625                          | 198-336 | 1 |
| TS35/68  | TG88                            | 198-068 | 1 |
| TS35/106 | TG1208                          | 198-107 | 1 |
| TS35/110 | TG1212                          | 198-110 | 1 |
| TS35/146 | TG1608, 1612                    | 198-146 | 1 |
| TS35/186 | TG2012                          | 198-186 | 1 |
| TS35/170 | TG2015                          | 198-170 | 1 |
| TS35/222 | TG2516                          | 198-222 | 1 |
| TS35/285 | TG3023                          | 198-285 | 1 |

|            |                     |         |   |
|------------|---------------------|---------|---|
| CITS35/250 | AKII, AKL           | 562-735 | 1 |
| NS35/216-3 | AKII, AKL, EK12, 24 | 795-030 | 1 |

|          |        |         |   |
|----------|--------|---------|---|
| TS35/110 | AL1212 | 162-009 | 1 |
| TS35/208 | AL2212 | 162-010 | 1 |
| TS35/145 | AL1616 | 162-011 | 1 |
| TS35/245 | AL2616 | 162-012 | 1 |
| TS35/345 | AL3616 | 162-013 | 1 |
| TS35/186 | AL2023 | 162-014 | 1 |
| TS35/266 | AL2823 | 162-015 | 1 |
| TS35/316 | AL3323 | 162-016 | 1 |

**Component Mounting Screws**

For mounting DIN rails, mounting plates, etc. into molded base holes.

- Select appropriate length
- Self tapping



| Type         | For Series  | Cat. No. | Std. Pack |
|--------------|-------------|----------|-----------|
| ST/3.9x9 mm  | For         | D-409    | 100       |
| ST/3.9x13 mm | All Plastic | D-413    | 100       |
| ST/3.9x17 mm | Series      | D-417    | 100       |
| ST/3.9x28 mm |             | D-428    | 100       |



## Hinge Kits

Attach the enclosure cover and base together for easy opening and closing of the enclosure. All required hardware and instructions are included.

- Small Plastic**
- Large Plastic**
- TG Internal Plastic**
- Metal**



## Enclosure Lid Screws

Replacements for existing screws.

- Short-Gray**
- Long-Gray**
- Short-Black**
- Long-Black**

## Thumb Screw Caps

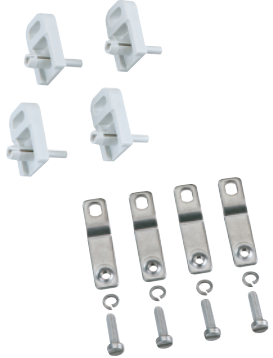


## Locksets

Locksets prevent the unauthorized opening of enclosure lids or doors.

KL Locksets with two keys easily install into hinged transparent doors.

Enclosure Padlock and Hinge set with all mounting accessories.



## Mounting Tabs

Enables enclosure to be surface mounted. 1 set = 4 mounting tabs

### Plastic

### Metal



## Snap In Double Membrane Entry Seals

- Fits and seals removed Pg knockouts
- IP66
- Features two integral sealing membranes



## Universal Snap In Entry Seal

- IP55
- Polyethylene
- Cut steps to fit desired cable size



## Snap In Air Vents

- Allows moisture to escape from the enclosure
- Labyrinth seal to prevent water formation
- IPX4

## Threaded Vent - M12x1.5

- Provides pressure compensation
- Air permeable and water-tight membrane
- Reduces condensation formation
- IP68

| Type  | For Series                          | Cat. No. | Std. Pack |
|-------|-------------------------------------|----------|-----------|
| HK1   | TK77 - 1809, EK002                  | 190-002  | 1         |
| HK2   | TK1811 - 3625, EK004 - 024, AK, AKL | 190-005  | 1         |
| TGISS | TGxx12 and TG2015-TG3023            | 182-001  | 1         |
| HK-AL | AL1212 - AL3323                     | 154-210  | 1         |

| Type    | For Series                   | Cat. No. | Std. Pack |
|---------|------------------------------|----------|-----------|
| TKLS-SG | TK - low cover, gray         | 190-010  | 1         |
| TKLS-LG | TK - high cover, gray        | 190-011  | 1         |
| TKLS-SB | TK - low cover, transparent  | 190-012  | 1         |
| TKLS-LB | TK - high cover, transparent | 190-013  | 1         |
| TS      | TK, EK, AK, AKL              | 190-001  | 1         |

| Type | For Series           | Cat. No. | Std. Pack |
|------|----------------------|----------|-----------|
| KL2  | AK                   | 706-102  | 1         |
| PL   | AK, AKL, TK1811 & up | 190-100  | 1         |

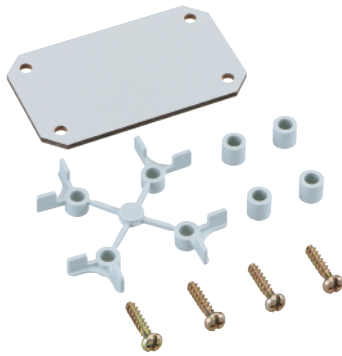
| Type   | For Series            | Cat. No. | Std. Pack |
|--------|-----------------------|----------|-----------|
| MT1    | TK, EK                | 194-001  | 1         |
| TGABL  | TG                    | 182-002  | 1         |
| MT2    | AKL, AK14 and up      | 793-004  | 1         |
| MT-AL1 | AL66-3 to AL1010-8    | 154-004  | 1         |
| MT-AL2 | AL1212-8 to AL3323-11 | 154-006  | 1         |

| Mounting Hole Type | Cable Dia. mm (in.)    | Cat. No. | Std. Pack |
|--------------------|------------------------|----------|-----------|
| M16                | 5 - 9 (.20 - .35)      | 260-416  | 50        |
| M20                | 7 - 12 (.28 - .47)     | 260-420  | 50        |
| M25                | 9 - 16 (.35 - .63)     | 260-425  | 50        |
| M32                | 14 - 21 (.55 - .83)    | 260-432  | 25        |
| M20                | 5 - 16 (.20 - .63)     | 216-420  | 100       |
| M25                | 5 - 21 (.20 - .83)     | 216-425  | 50        |
| M32                | 13 - 26.5 (.51 - 1.04) | 216-432  | 25        |
| M20                | N/A                    | 262-420  | 100       |
| M12                | N/A                    | 262-412  | 5         |

**Mounting Plates**

**TK Series**

Complete with screws.  
Hole patterns match mounting provisions in enclosure base.



**Plastic laminate** 2.5 mm (.10 in) thick.  
Color: Gray

**Steel** 2.0 mm (.08 in) thick.

**TG Series\***

**Plastic laminate** 2.5 mm (.10 in) thick.  
Color: Gray



**Steel** 2.0 mm (0.08 in) thick.

**Abox Series**

Plastic laminate  
Color: Gray



**Aluminum Series**

Steel plates for the mounting and installation of large / heavy devices and components.  
- For AL Series only



**AK Series**

**Plastic laminate** 4 mm (.16 in) thick  
Color: Gray

**Steel** 2.0 mm (0.08 in) thick.

\*Mounting hardware included with enclosure.

| Type       | Enclosure Series | Size mm (in.)        | Cat. No. | Std. Pack |
|------------|------------------|----------------------|----------|-----------|
| TKMPI-55   | TK55             | 46x44 (1.81x1.73)    | 195-055  | 5         |
| TKMPI-75   | TK75             | 59x44 (2.32x1.73)    | 195-075  | 5         |
| TKMPI-77   | TK77             | 45x45 (1.77x1.77)    | 195-001  | 1         |
| TKMPI-97   | TK97             | 74x45 (2.91x1.77)    | 195-002  | 1         |
| TKMPI-99   | TK99             | 74x74 (2.91x2.91)    | 195-003  | 1         |
| TKMPI-1111 | TK1111           | 90x90 (3.54x3.54)    | 195-004  | 1         |
| TKMPI-1309 | TK1309           | 110x74 (4.33x2.91)   | 195-009  | 1         |
| TKMPI-1313 | TK1313           | 110x110 (4.33x4.33)  | 195-005  | 1         |
| TKMPI-1809 | TK1809           | 160x74 (6.30x2.91)   | 195-010  | 1         |
| TKMPI-1811 | TK1811           | 150x90 (5.91x3.54)   | 195-006  | 1         |
| TKMPI-1813 | TK1813           | 146x100 (5.75x3.94)  | 195-011  | 1         |
| TKMPI-1818 | TK1818           | 150x150 (5.91x5.91)  | 195-007  | 1         |
| TKMPI-2518 | TK2518           | 220x150 (8.66x5.91)  | 195-008  | 1         |
| TKMPI-3625 | TK3625           | 331x220 (13.03x8.66) | 195-012  | 1         |
| TKMPS-77   | TK77             | 45x45 (1.77x1.77)    | 197-001  | 1         |
| TKMPS-97   | TK97             | 75x45 (2.95x1.77)    | 197-002  | 1         |
| TKMPS-99   | TK99             | 74x74 (2.91x2.91)    | 197-003  | 1         |
| TKMPS-1111 | TK1111           | 90x90 (3.54x3.54)    | 197-004  | 1         |
| TKMPS-1309 | TK1309           | 110x74 (4.33x2.91)   | 197-009  | 1         |
| TKMPS-1313 | TK1313           | 110x110 (4.33x4.33)  | 197-005  | 1         |
| TKMPS-1809 | TK1809           | 160x74 (6.30x2.91)   | 197-010  | 1         |
| TKMPS-1811 | TK1811           | 150x90 (5.91x3.54)   | 197-006  | 1         |
| TKMPS-1813 | TK1813           | 146x100 (5.75x3.94)  | 197-011  | 1         |
| TKMPS-1818 | TK1818           | 150x150 (5.91x5.91)  | 197-007  | 1         |
| TKMPS-2518 | TK2518           | 220x150 (8.66x5.91)  | 197-008  | 1         |
| TKMPS-3625 | TK3625           | 331x220 (13.03x8.66) | 197-012  | 1         |
| TGMPI-88   | TG88             | 73x73 (2.87x2.87)    | 186-003  | 1         |
| TGMPI-1208 | TG1208           | 91x73 (3.58x2.87)    | 186-004  | 1         |
| TGMPI-1212 | TG1212           | 113x93 (4.45x3.58)   | 186-005  | 1         |
| TGMPI-1608 | TG1608           | 131x73 (5.16x2.87)   | 186-006  | 1         |
| TGMPI-1612 | TG1612           | 131x113 (5.16x4.45)  | 186-007  | 1         |
| TGMPI-2012 | TG2012           | 171x113 (6.73x4.45)  | 186-008  | 1         |
| TGMPI-2015 | TG2015           | 171x143 (6.73x5.63)  | 186-009  | 1         |
| TGMPI-2516 | TG2516           | 220x152 (8.66x5.98)  | 186-012  | 1         |
| TGMPI-3023 | TG3023           | 270x220 (10.63x5.98) | 186-013  | 1         |
| TGMPS-88   | TG88             | 73x73 (2.87x2.87)    | 187-003  | 1         |
| TGMPS-1208 | TG1208           | 91x73 (3.58x2.87)    | 187-004  | 1         |
| TGMPS-1212 | TG1212           | 113x93 (4.45x3.58)   | 187-005  | 1         |
| TGMPS-1608 | TG1608           | 131x73 (5.16x2.87)   | 187-006  | 1         |
| TGMPS-1612 | TG1612           | 131x113 (5.16x4.45)  | 187-007  | 1         |
| TGMPS-2012 | TG2012           | 171x113 (6.73x4.45)  | 187-008  | 1         |
| TGMPS-2015 | TG2015           | 171x143 (6.73x5.63)  | 187-009  | 1         |
| TGMPS-2516 | TG2516           | 220x152 (8.66x5.98)  | 187-012  | 1         |
| TGMPS-3023 | TG3023           | 270x220 (10.63x5.98) | 187-013  | 1         |
| MP060      | Abox060          | 83x83 (3.27x3.27)    | 895-006  | 1         |
| MP100      | Abox100          | 109x109 (4.29x4.29)  | 895-010  | 1         |
| MP160      | Abox160          | 149x149 (5.87x5.87)  | 895-016  | 1         |
| MP350      | Abox350          | 217x217 (8.54x8.54)  | 895-035  | 1         |
| ALMPS-88   | AL88             | 68.8x64 (2.71x2.52)  | 155-005  | 1         |
| ALMPS-1308 | AL1308           | 114x68.8 (4.49x2.71) | 155-006  | 1         |
| ALMPS-1808 | AL1808           | 164x68.8 (6.46x2.71) | 155-007  | 1         |
| ALMPS-1010 | AL1010           | 88x88 (3.46x3.46)    | 155-008  | 1         |
| ALMPS-1212 | AL1212           | 109x107 (4.29x4.21)  | 155-009  | 1         |
| ALMPS-2212 | AL2212           | 207x107 (8.15x4.21)  | 155-010  | 1         |
| ALMPS-1616 | AL1616           | 145x143 (5.71x5.63)  | 155-011  | 1         |
| ALMPS-2616 | AL2616           | 245x143 (9.65x5.63)  | 155-012  | 1         |
| ALMPS-3616 | AL3616           | 345x143 (13.6x5.63)  | 155-013  | 1         |
| ALMPS-2023 | AL2023           | 214x184 (8.43x7.24)  | 155-014  | 1         |
| ALMPS-2823 | AL2823           | 264x214 (10.4x8.43)  | 155-015  | 1         |
| ALMPS-3323 | AL3323           | 314x214 (12.4x8.43)  | 155-016  | 1         |
| AKMPI 1    | AK, AKL          | 240x112 (9.45x4.41)  | 795-001  | 1         |
| AKMPI 2    | AK, AKL          | 240x240 (9.45x9.45)  | 795-002  | 1         |
| AKMPI 3    | AK, AKL          | 240x390 (9.45x15.35) | 795-003  | 1         |
| AKMPI 4    | AK, AKL          | 240x540 (9.45x21.26) | 795-004  | 1         |
| AKMPS 2    | AK, AKL          | 240x240 (9.45x9.45)  | 795-012  | 1         |
| AKMPS 3    | AK, AKL          | 240x390 (9.45x15.35) | 795-013  | 1         |
| AKMPS 4    | AK, AKL          | 240x540 (9.45x21.26) | 795-014  | 1         |

## Данный компонент на территории Российской Федерации

### Вы можете приобрести в компании MosChip.

Для оперативного оформления запроса Вам необходимо перейти по данной ссылке:

<http://moschip.ru/get-element>

Вы можете разместить у нас заказ для любого Вашего проекта, будь то серийное производство или разработка единичного прибора.

В нашем ассортименте представлены ведущие мировые производители активных и пассивных электронных компонентов.

Нашей специализацией является поставка электронной компонентной базы двойного назначения, продукции таких производителей как XILINX, Intel (ex.ALTERA), Vicor, Microchip, Texas Instruments, Analog Devices, Mini-Circuits, Amphenol, Glenair.

Сотрудничество с глобальными дистрибьюторами электронных компонентов, предоставляет возможность заказывать и получать с международных складов практически любой перечень компонентов в оптимальные для Вас сроки.

На всех этапах разработки и производства наши партнеры могут получить квалифицированную поддержку опытных инженеров.

Система менеджмента качества компании отвечает требованиям в соответствии с ГОСТ Р ИСО 9001, ГОСТ РВ 0015-002 и ЭС РД 009

### Офис по работе с юридическими лицами:

105318, г.Москва, ул.Щербаковская д.3, офис 1107, 1118, ДЦ «Щербаковский»

Телефон: +7 495 668-12-70 (многоканальный)

Факс: +7 495 668-12-70 (доб.304)

E-mail: [info@moschip.ru](mailto:info@moschip.ru)

Skype отдела продаж:

moschip.ru

moschip.ru\_4

moschip.ru\_6

moschip.ru\_9