

Interactive Catalog Replaces Catalog Pages

Honeywell Sensing and Control has replaced the PDF product catalog with the new **Interactive Catalog**. The **Interactive Catalog** is a power search tool that makes it easier to find product information. It includes more installation, application, and technical information than ever before.



**Click this icon to try the new
Interactive Catalog.**

Sensing and Control

Honeywell Inc.

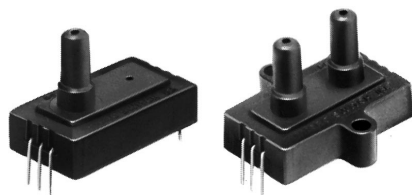
11 West Spring Street

Freeport, Illinois 61032

Pressure Sensors

180PC Series

Miniature Absolute, Differential, Gage/Amplified



Terminal Mount

Housing Mount

FEATURES

- Miniature plastic package
- Terminal and housing mount styles
- PCB termination
- Fully signal conditioned

180PC SERIES PERFORMANCE CHARACTERISTICS at 8.0 ±0.01 VDC Excitation, 25°C

| | Min. | Typ. | Max. | Units |
|--|--|-------|------|--------|
| Excitation | 7.00 | 8.00 | 16 | VDC |
| Supply Current | --- | --- | 6 | mA |
| Current Sourcing Output | --- | --- | 10 | mA |
| Null Offset (184/185PC) | 0.95 | 1.00 | 1.05 | V |
| Null Offset (186PC) | 3.45 | 3.50 | 3.55 | V |
| Null Offset | | | | |
| 185PC15AT @ 2 psia | 1.62 | 1.67 | 1.72 | V |
| 185PC30AT @ 2 psia | 1.28 | 1.33 | 1.38 | V |
| Output at Full Pressure (184/185PC, G,D) | 5.90 | 6.00 | 6.15 | V |
| Output at Full Pressure (185PC, A only) | 5.85 | 6.00 | 6.15 | V |
| Output at Full Pressure (186PC) | 5.90 | 6.00 | 6.10 | V |
| Span (184/185PC, G,D) | 4.95 | 5.00 | 5.05 | V |
| Span (185PC, A only) | 4.90 | 5.00 | 5.10 | V |
| Span (186PC) | --- | 5.00 | --- | V |
| Span (185PC15AT) | 4.28 | 4.33 | 4.38 | V |
| Span (185PC30AT) | 4.62 | 4.67 | 4.72 | V |
| Ratiometricity Error | | | | |
| 7 to 8V or 8 to 9V | --- | ±0.50 | --- | % Span |
| 9 to 12V | --- | ±2.00 | --- | % Span |
| Temperature Error (Combined null and span) | -2% | 0 | +2% | % Span |
| Stability over One Year | --- | ±0.50 | --- | % Span |
| Response Time | --- | --- | 1.00 | msec |
| Weight | --- | 12 | --- | grams |
| Short Circuit Protection | Output may be shorted indefinitely to ground | | | |
| Output Ripple | None, DC device | | | |
| Ground Reference | Supply and output are common | | | |

Amplified

ENVIRONMENTAL SPECIFICATIONS

| | |
|-------------------------|--|
| Operating Temperature | -40° to +85°C (-40° to +185°F) |
| Storage Temperature | -55° to +125°C (-67° to +257°F) |
| Compensated Temperature | 0° to +50°C (32° to +122°F) |
| Shock | MIL-STD-202, Method 213 (50 g, half sine, 6 msec) |
| Vibration | MIL-STD-202, Method 204 (10 to 2000 Hz at 10 g) |
| Media | P2 port Wetted materials; polyester housing, epoxy adhesive, silicon, borosilicate glass, and silicon-to-glass bond* |
| | P2 port Absolute only: Factory sealed vacuum reference, no connection |
| | P1 port Dry gases only |

*Liquid media containing some highly ionic solutions could potentially neutralize the chip-to-glass tube bond.

Pressure Sensors

180PC Series

Miniature Absolute, Differential, Gage/Amplified

184PC SERIES ORDER GUIDE, VACUUM GAGE TYPE

| Catalog Listing | Pressure Range psi | Overpressure psi Max. | Linearity, % Span | |
|-----------------|--------------------|-----------------------|-------------------|--------------|
| | | | P2 > P1 Max. | P2 < P1 Max. |
| 184PC05GT | 0--5 | 20 | --- | ±1.00 |
| 184PC15GT | 0--15 | 45 | --- | ±1.00 |

185PC SERIES ORDER GUIDE, DIFFERENTIAL TYPE, P2 > P1

| Catalog Listing | Pressure Range psi | Overpressure psi Max. | Linearity, % Span | |
|-----------------|--------------------|-----------------------|-------------------|--------------|
| | | | P2 > P1 Max. | P2 < P1 Max. |
| 185PC05DT | 0-5 | 20 | ±2.00 | ±1.00 |
| 185PC15DT | 0-15 | 45 | ±2.00 | ±1.00 |
| 185PC30DT | 0-30 | 60 | ±1.50 | ±0.75 |

186PC SERIES ORDER GUIDE, BI-DIRECTIONAL TYPE, P2-P1

| Catalog Listing | Pressure Range psi | Overpressure psi Max. | Linearity, % Span | |
|-----------------|--------------------|-----------------------|-------------------|--------------|
| | | | P2 > P1 Max. | P2 < P1 Max. |
| 186PC03DT | ±2.5 | 20 | ±2.00 | ±1.00 |
| 186PC05DT | ±5.0 | 20 | ±2.00 | ±1.00 |
| 186PC15DT | ±15 | 45 | ±2.00 | ±1.00 |

185PC SERIES ORDER GUIDE, ABSOLUTE TYPE

| Catalog Listing | Pressure Range psi | Overpressure psi Max. | Linearity, % Span | |
|-----------------|--------------------|-----------------------|-------------------|--------------|
| | | | P2 > P1 Max. | P2 < P1 Max. |
| 185PC15AT | 0-15 | 45 | --- | ±1.00 |
| 185PC30AT | 0-30 | 60 | --- | ±0.75 |

HOW TO ORDER

Catalog listings in the order guide are shown with mounting version **T** (terminal mount). **H** (housing mount) also available. Contact 800 number.

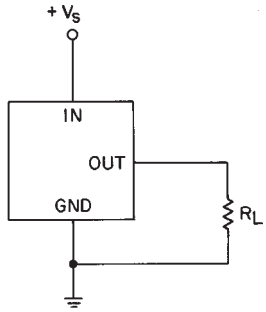
Pressure Sensors

180PC Series

Miniature Absolute, Differential, Gage/Amplified

ELECTRICAL CONNECTIONS

Voltage Excitation



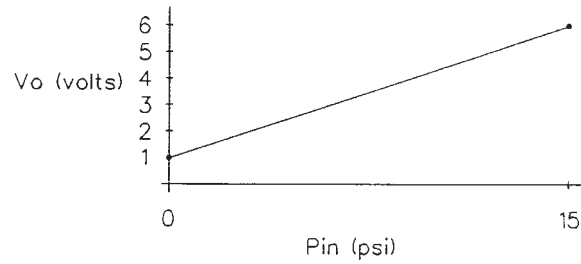
NOTES

1. Terminals are labeled on the sensor.
2. Input and output share a common ground.
3. R_L must be greater than or equal to 3000 ohms.

IDEAL OUTPUT AT $V_s = 8.00 \pm 0.01$ VDC

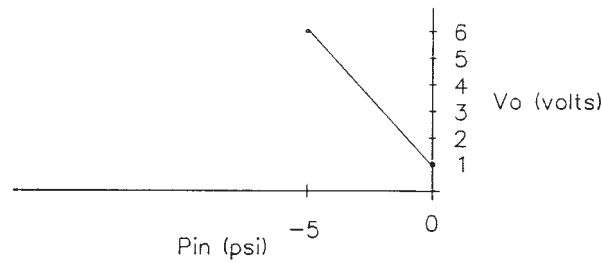
Differential

Example: 185PC15DT when $P_{IN} = P_2 - P_1$



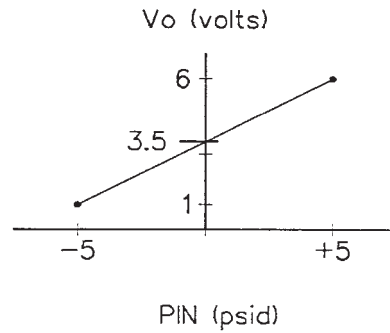
Vacuum Gage

Example: 184PC05GT where $P_2 = P_{IN}$, $P_1 = \text{Ambient}$



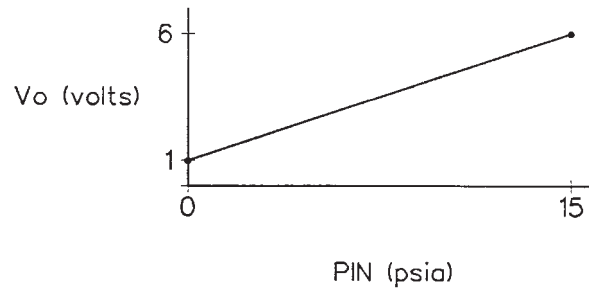
Bi-directional

Example: 186PC05DH where $P_{IN} = P_2 - P_1$



Absolute

Example: 185PC15AP where $P_1 = P_{IN}$, $P_2 = \text{Factory sealed vacuum}$



Amplified

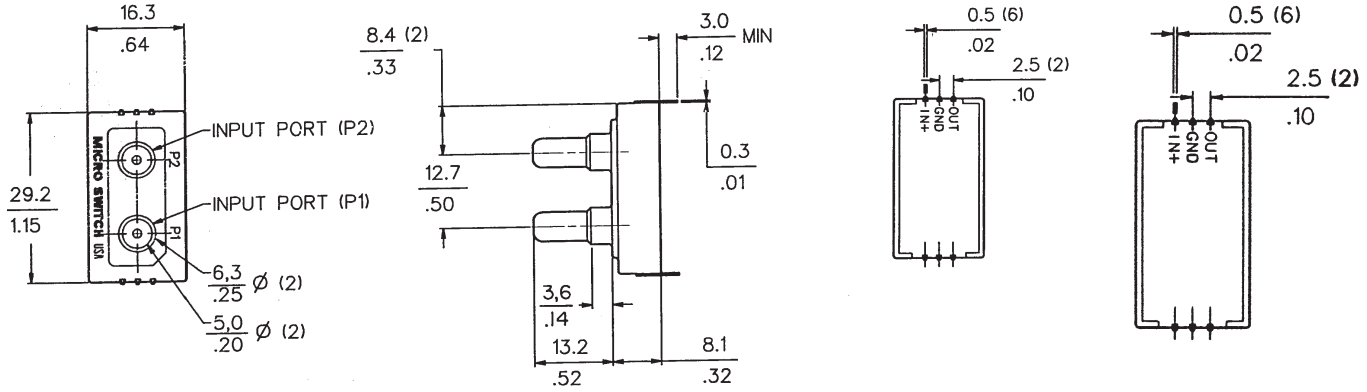
Pressure Sensors

180PC Series

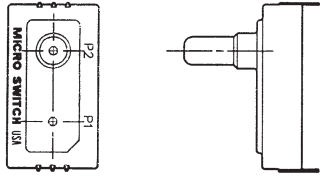
Miniature Absolute, Differential, Gage Sensored/Amplified

MOUNTING DIMENSIONS $\frac{0.0}{0.00} = \text{mm}$
 $\frac{0.00}{.00} = \text{in.}$

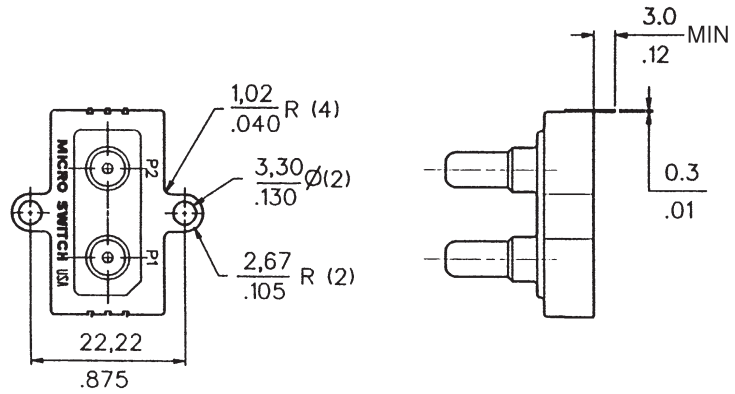
Terminal Mount (Differential "D" or Absolute "A" Housing)



(Gage "G" Housing)



Housing Mount



Данный компонент на территории Российской Федерации

Вы можете приобрести в компании MosChip.

Для оперативного оформления запроса Вам необходимо перейти по данной ссылке:

<http://moschip.ru/get-element>

Вы можете разместить у нас заказ для любого Вашего проекта, будь то серийное производство или разработка единичного прибора.

В нашем ассортименте представлены ведущие мировые производители активных и пассивных электронных компонентов.

Нашей специализацией является поставка электронной компонентной базы двойного назначения, продукции таких производителей как XILINX, Intel (ex.ALTERA), Vicor, Microchip, Texas Instruments, Analog Devices, Mini-Circuits, Amphenol, Glenair.

Сотрудничество с глобальными дистрибьюторами электронных компонентов, предоставляет возможность заказывать и получать с международных складов практически любой перечень компонентов в оптимальные для Вас сроки.

На всех этапах разработки и производства наши партнеры могут получить квалифицированную поддержку опытных инженеров.

Система менеджмента качества компании отвечает требованиям в соответствии с ГОСТ Р ИСО 9001, ГОСТ РВ 0015-002 и ЭС РД 009

Офис по работе с юридическими лицами:

105318, г.Москва, ул.Щербаковская д.3, офис 1107, 1118, ДЦ «Щербаковский»

Телефон: +7 495 668-12-70 (многоканальный)

Факс: +7 495 668-12-70 (доб.304)

E-mail: info@moschip.ru

Skype отдела продаж:

moschip.ru

moschip.ru_4

moschip.ru_6

moschip.ru_9