

PLEASE CHECK WWW.MOLEX.COM FOR LATEST PART INFORMATION

Part Number: [0785260001](#)
Status: **Active**
Description: 1.27mm (.050") Pitch SIM Card Holder with separate Detect Pin, 8 Circuits, Push-Push Style, Housing Height 1.50mm (.059"), with Pegs, Lead Free, Halogen Free

Documents:

[Drawing \(PDF\)](#) [RoHS Certificate of Compliance \(PDF\)](#)
[Product Specification PS-78526-001 \(PDF\)](#)

General

Product Family	Memory Card Sockets
Series	78526
Button Type	Push-Push
Comments	With Pegs
Component Type	Card Holder (Host)
Product Name	SIM
Type	N/A

Physical

Card Detection Switch	Yes
Circuits (Loaded)	8
Circuits (maximum)	8
Durability (mating cycles max)	10,000
Ejector Button Side	No Ejector Button Present
Entry Angle	Horizontal
Keying to Mating Part	Yes
Material - Metal	Copper Alloy
Material - Plating Mating	Gold
Material - Plating Termination	Tin
Material - Resin	High Temperature Thermoplastic
PCB Locator	Yes
PCB Mounting Side	Normal
PCB Retention	Yes
Packaging Type	Embossed Tape on Reel
Pitch - Mating Interface (in)	0.050 In
Pitch - Mating Interface (mm)	1.27 mm
Pitch - Term. Interface (in)	0.050 In
Pitch - Term. Interface (mm)	1.27 mm
Plating min: Mating (µin)	30
Plating min: Mating (µm)	0.76
Plating min: Termination (µin)	100
Plating min: Termination (µm)	2.54
Ports	1
Temperature Range - Operating	-20°C to +85°C
Termination Interface: Style	Surface Mount

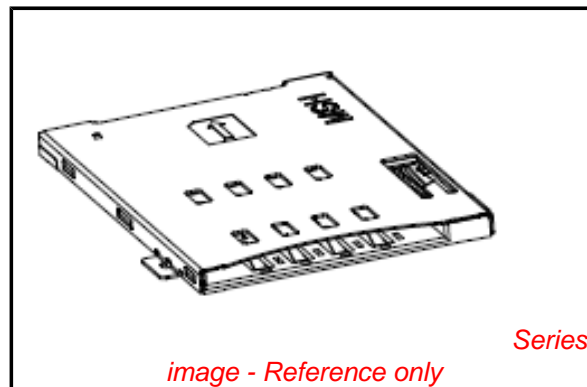
Electrical

Current - Maximum per Contact	0.5A
Shielded	Yes
Voltage - Maximum	50V DC

Material Info

Reference - Drawing Numbers

Packaging Specification	PK-78526-001
Product Specification	PS-78526-001
Sales Drawing	SD-78526-001



EU RoHS

**ELV and RoHS
Compliant**
**REACH SVHC
Not Reviewed**
**Halogen-Free
Status**

China RoHS



**Need more information on product
environmental compliance?**

Email productcompliance@molex.com
 For a multiple part number RoHS Certificate of Compliance, [click here](#)

Please visit the [Contact Us](#) section for any non-product compliance questions.

Search Parts in this Series

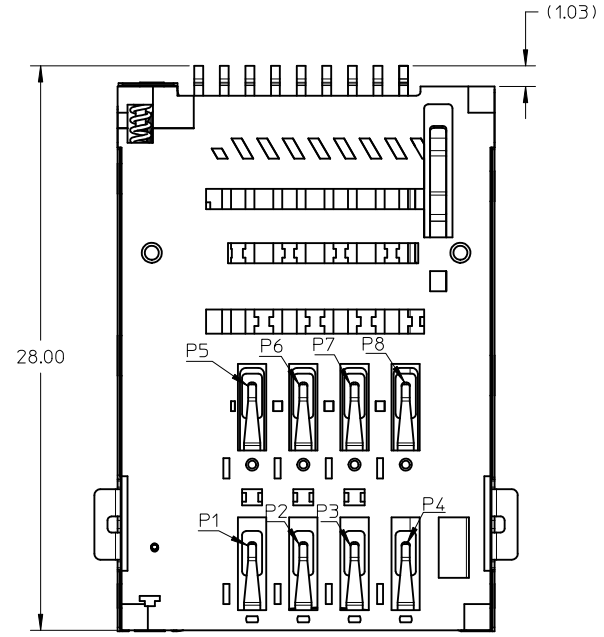
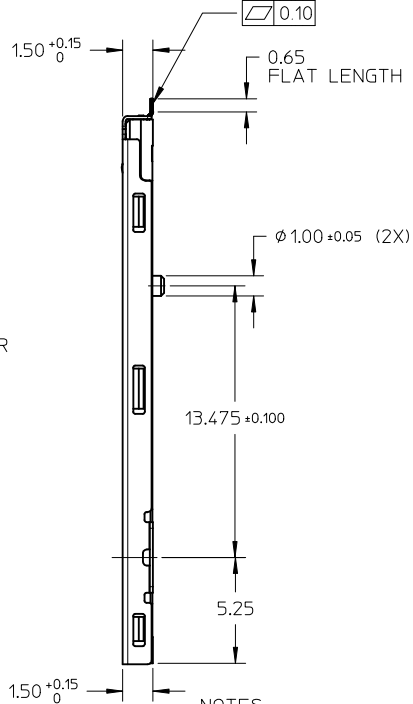
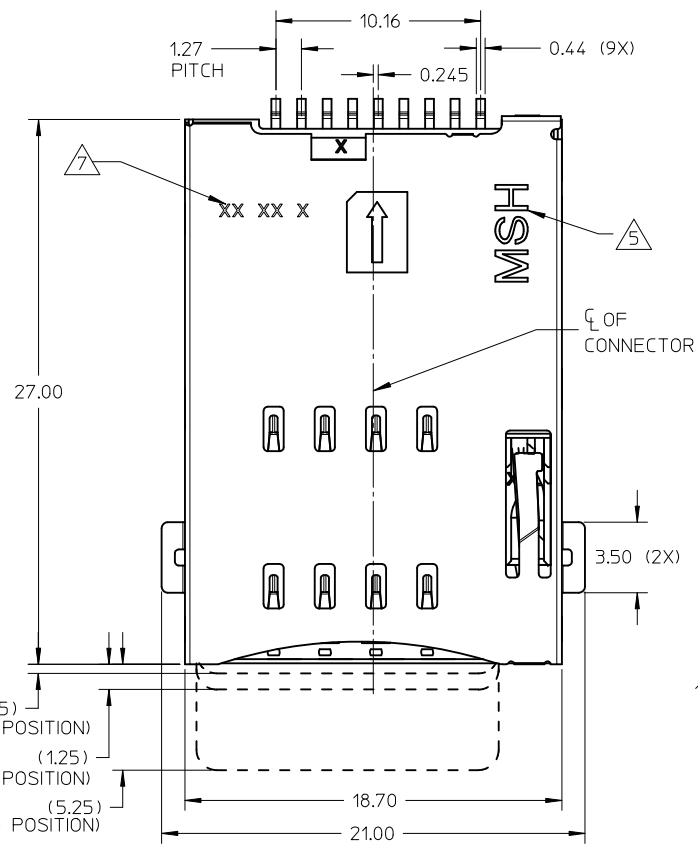
[78526Series](#)

Mates With

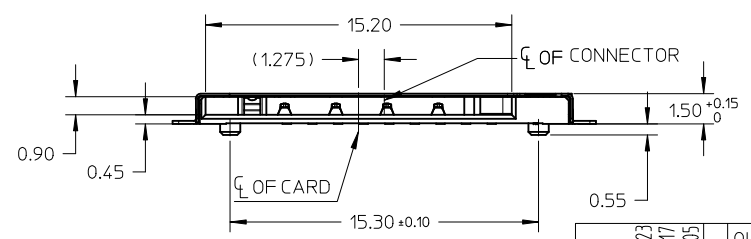
Standard SIM Card

This document was generated on 05/17/2010

PLEASE CHECK WWW.MOLEX.COM FOR LATEST PART INFORMATION

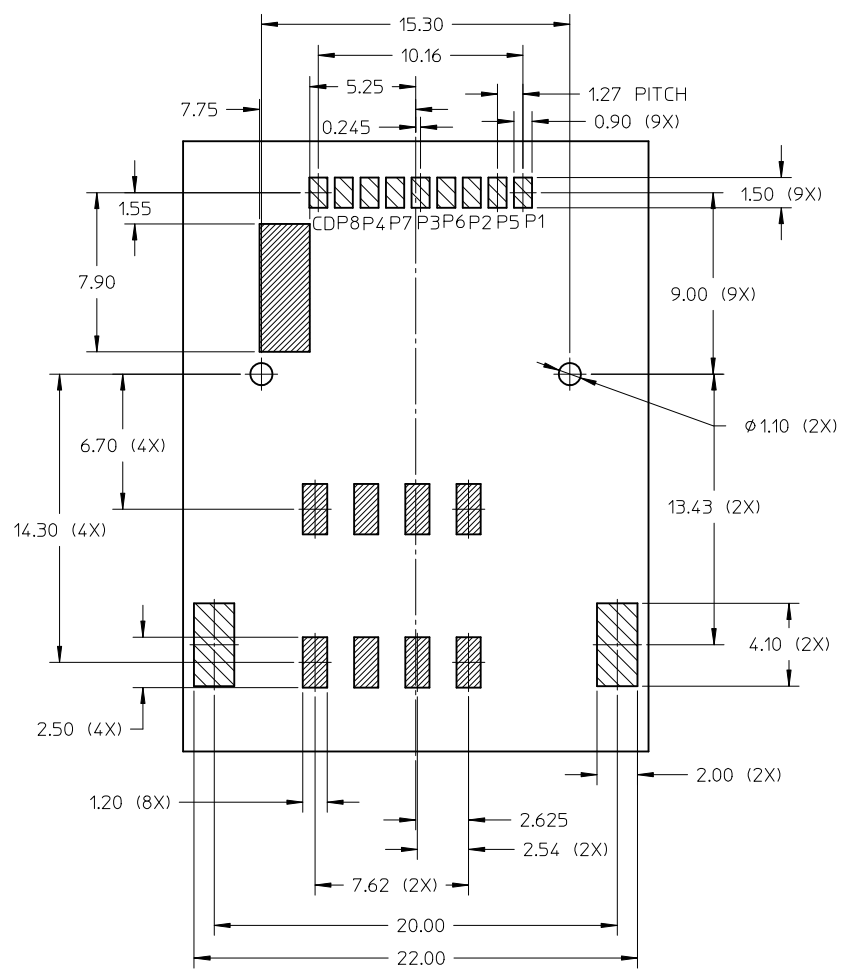


- NOTES:
1. MATERIALS: HOUSING, CAM, DUMMY CARD: HIGH TEMP THERMOPLASTIC, UL94V-0, BLACK
TERMINAL, DETECT PIN: COPPER ALLOY
METAL SHELL, COIL SPRING, CAM PIN: STAINLESS STEEL
 2. FINISHES: 0.76μm MIN GOLD ON CONTACT AREA OVER 1.27μm NICKEL UNDERPLATE.
2.54μm MIN MATTE TIN ON SOLDER TAIL AREA OVER 1.27μm NICKEL UNDERPLATE.
GOLD FLASH ON SHELL SOLDER TAB OVER 1.27μm NICKEL UNDERPLATE.
 3. PRODUCT SPECIFICATION: PS-78526-001
 4. PACKAGING SPECIFICATION: PK-78526-001
 5. MOLEX LOGO LOCATED APPROXIMATELY AS SHOWN.
 6. CONNECTOR OVERALL HEIGHT TO BE AT 1.75MM MAX DURING PUSH-PUSH FUNCTION.
 7. DATE CODE PRINTING: XX XX X



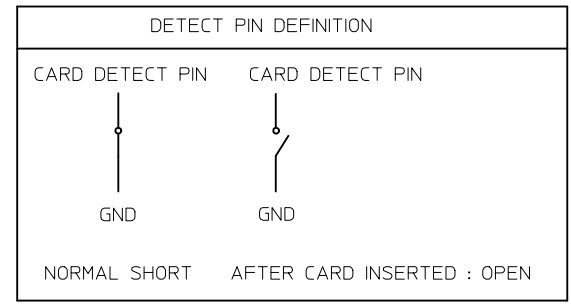
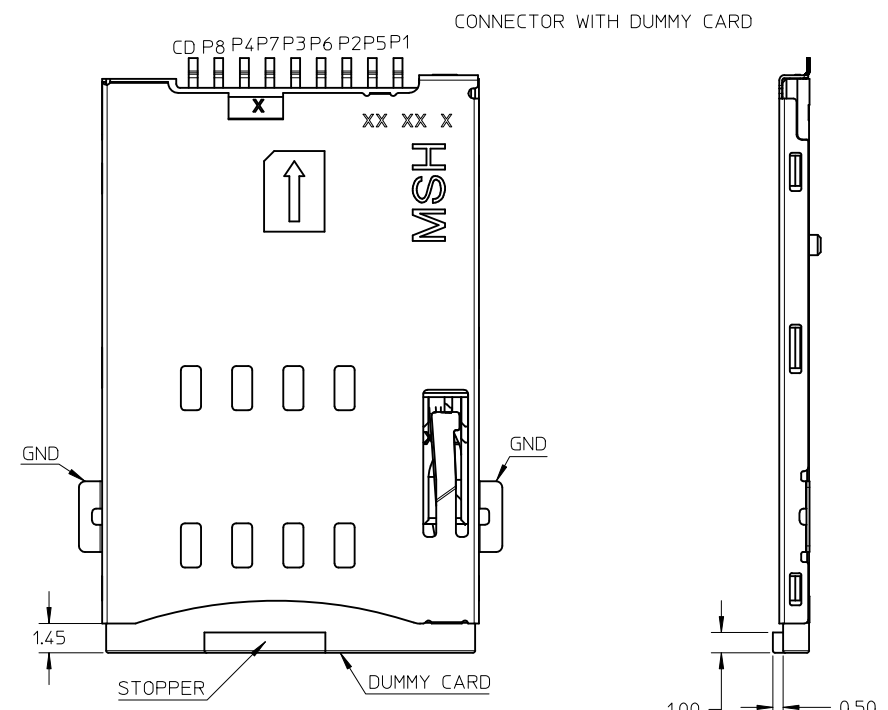
HALOGEN FREE

ADD NOTE 6 EC NO: S2010-0707 DRWN:CGOH CHKD:JTAN02 APPR:BOKOK 2010/02/23 2009/08/17 2010/03/05	QUALITY SYMBOLS F _A =0 F _E =0 F _P =0	GENERAL TOLERANCES (UNLESS SPECIFIED)		DIMENSION STYLE MM ONLY		SCALE NTS	DESIGN UNITS METRIC	THIRD ANGLE PROJECTION			
				mm	INCH	DRAWN BY CGOH		DATE 2009/07/17		SIM CARD CONNECTOR PUSH PUSH TYPE HEIGHT 1.5MM MOLEX INCORPORATED	
				4 PLACES	± ---	± ---	CHECKED BY JTAN02		DATE 2009/08/17		
				3 PLACES	± ---	± ---	APPROVED BY BOKOK		DATE 2010/03/05		
		ANGULAR ± 3 °		MATERIAL NO. 78526-0001		DOCUMENT NO. SD-78526-001		SHEET NO. 1 OF 3			
DRAFT WHERE APPLICABLE MUST REMAIN WITHIN DIMENSIONS		SIZE A3		THIS DRAWING CONTAINS INFORMATION THAT IS PROPRIETARY TO MOLEX INCORPORATED AND SHOULD NOT BE USED WITHOUT WRITTEN PERMISSION							



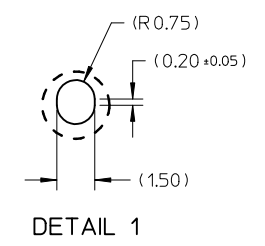
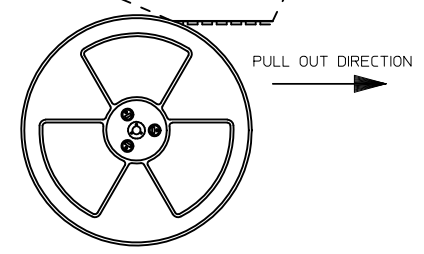
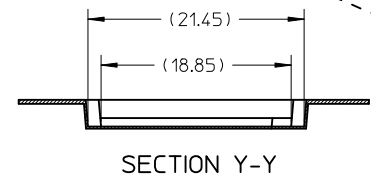
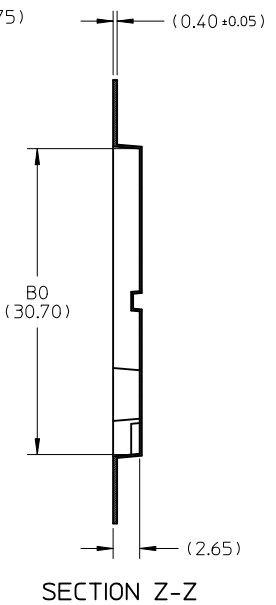
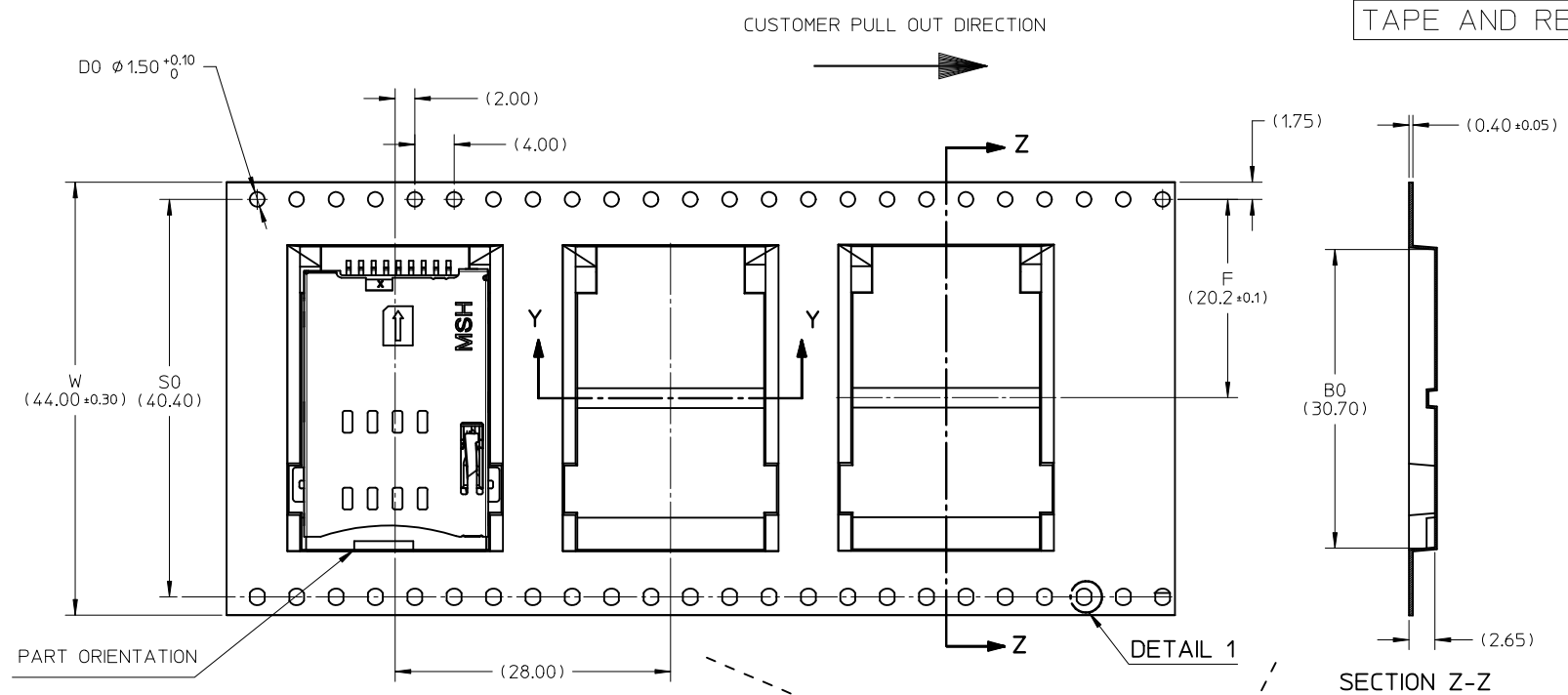
RECOMMENDED PCB LAYOUT
(GENERAL TOLERANCE+0.05)

- CIRCUIT TRACE KEEP OUT AREA
- SOLDERING PAD AREA



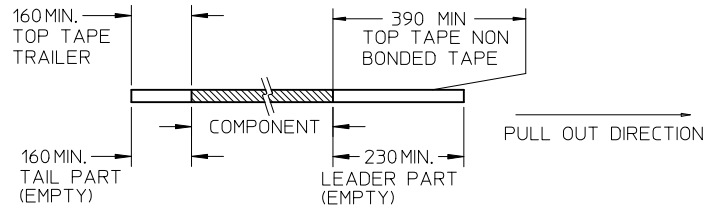
ADD NOTE 6 EC NO: S2010-0707 DRWN:CGOH CHKD:JTAN02 APPR:BOKOK 2010/02/23 2009/08/17 2010/03/05	QUALITY SYMBOLS	GENERAL TOLERANCES (UNLESS SPECIFIED)	DIMENSION STYLE	SCALE	DESIGN UNITS	THIRD ANGLE PROJECTION
	$F_A=0$ $F_G=0$ $F_P=0$	mm INCH 4 PLACES ± --- ± --- 3 PLACES ± --- ± --- 2 PLACES ± 0.25 ± --- 1 PLACE ± --- ± --- ANGULAR ± 3 °	MM ONLY	NTS	METRIC	
		DRAWN BY: CGOH DATE: 2009/07/17	TITLE: SIM CARD CONNECTOR PUSH PUSH TYPE HEIGHT 1.5MM			
		CHECKED BY: JTAN02 DATE: 2009/08/17	APPROVED BY: BOKOK DATE: 2010/03/05			
		MATERIAL NO. 78526-0001	MOLEX INCORPORATED		DOCUMENT NO. SD-78526-001	SHEET NO. 2 OF 3
		DRAFT WHERE APPLICABLE MUST REMAIN WITHIN DIMENSIONS				
		THIS DRAWING CONTAINS INFORMATION THAT IS PROPRIETARY TO MOLEX INCORPORATED AND SHOULD NOT BE USED WITHOUT WRITTEN PERMISSION				

TAPE AND REEL PACKING

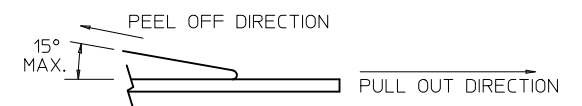


NOTES:

1. LEADER AND TRAILER TAPE



2. PEELING OFF FORCE OF THE TOP TAPE: 10 - 130gf. (PEELING DIRECTION AS SHOWN IN FOLLOWING FIGURE)



- 3. TAPE AND REEL SPECIFICATION IS AS PER EIA-481.
- 4. TAPE AND REEL QUANTITY : 600 PCS/ REEL.
- 5. THE TAPE IS TREATED FOR ANTI-STATIC.

ADD NOTE 6 EC NO: S2010-0707 DRWN:CGOH CHKD:JTAN02 APPR:BOKOK	2010/02/23 2009/08/17 2010/03/05	DESCRIPTION QUALITY SYMBOLS $F_A=0$ $F_C=0$ $F_P=0$	GENERAL TOLERANCES (UNLESS SPECIFIED)		DIMENSION STYLE MM ONLY		SCALE NTS	DESIGN UNITS METRIC	THIRD ANGLE PROJECTION			
				mm	INCH	DRAWN BY CGOH	DATE 2009/07/17	TITLE SIM CARD CONNECTOR PUSH PUSH TYPE HEIGHT 1.5MM				
			4 PLACES	± ---	± ---	CHECKED BY JTAN02	DATE 2009/08/17	MOLEX INCORPORATED DOCUMENT NO. SD-78526-001 SHEET NO. 3 OF 3				
			3 PLACES	± ---	± ---	APPROVED BY BOKOK	DATE 2010/03/05					
2 PLACES	± 0.25	± ---	MATERIAL NO. 78526-0001		THIS DRAWING CONTAINS INFORMATION THAT IS PROPRIETARY TO MOLEX INCORPORATED AND SHOULD NOT BE USED WITHOUT WRITTEN PERMISSION							
1 PLACE	± ---	± ---	ANGULAR ± 3 °									
DRAFT WHERE APPLICABLE MUST REMAIN WITHIN DIMENSIONS			SIZE A3									

Данный компонент на территории Российской Федерации

Вы можете приобрести в компании MosChip.

Для оперативного оформления запроса Вам необходимо перейти по данной ссылке:

<http://moschip.ru/get-element>

Вы можете разместить у нас заказ для любого Вашего проекта, будь то серийное производство или разработка единичного прибора.

В нашем ассортименте представлены ведущие мировые производители активных и пассивных электронных компонентов.

Нашей специализацией является поставка электронной компонентной базы двойного назначения, продукции таких производителей как XILINX, Intel (ex.ALTERA), Vicor, Microchip, Texas Instruments, Analog Devices, Mini-Circuits, Amphenol, Glenair.

Сотрудничество с глобальными дистрибьюторами электронных компонентов, предоставляет возможность заказывать и получать с международных складов практически любой перечень компонентов в оптимальные для Вас сроки.

На всех этапах разработки и производства наши партнеры могут получить квалифицированную поддержку опытных инженеров.

Система менеджмента качества компании отвечает требованиям в соответствии с ГОСТ Р ИСО 9001, ГОСТ РВ 0015-002 и ЭС РД 009

Офис по работе с юридическими лицами:

105318, г.Москва, ул.Щербаковская д.3, офис 1107, 1118, ДЦ «Щербаковский»

Телефон: +7 495 668-12-70 (многоканальный)

Факс: +7 495 668-12-70 (доб.304)

E-mail: info@moschip.ru

Skype отдела продаж:

moschip.ru

moschip.ru_4

moschip.ru_6

moschip.ru_9