

Terminal Block Markers

PANDUIT®

SPECIFICATION SHEET

specifications

Terminal Block Markers are to be continuously molded, flexible polymer material. The elastomeric material shall readily accept continuous thermal transfer print, using the Panduit TDP43ME printer. Product shall be resistant to scratching, smearing, and rubbing. Product shall be able to be installed and removed without the use of hand tools.



technical information

Material:	Thermoplastic Elastomer (TPE)
Operating temperature:	-40°F to 180°F (-40°C to 82°C)
Flammability:	UL 94-V0
Recommended usage:	Indoor use only
Standards compliance:	Halogen free and RoHS Meets EN 61010-1 (VDE 0411-1) for abrasion and wipe resistance Meets EN ISO 175 for oil and chemical resistance Meets EN 60464-2:2001 for resistance to solvents Meets IEC 60947-7-1/2 for resistance to aging Meets IEC 60068-2-6 for vibration resistance

key features and benefits

Thermal transfer printable	Faster printing speeds Use single printer for all control panel labels; terminal block markers, heat shrink, self-laminating, raised panel, arc flash labels, voltage markers, and safety labels Print-on-demand using Panduit labeling software Allows use of standard resin ribbon – no need for difficult, messy, or expensive ink cartridges
Provided on a convenient continuous reel	Faster marker installation; install many markers in a single step Less marker waste – print only as many as you need Easy loading in Panduit TDP43ME printer and roll stand
Durability	Flexible markers have superior holding strength in terminal blocks, eliminating markers that fall out Chemical and abrasion resistant Shock and vibration resistant Markers have an easy pull-apart design, and can be easily replaced for any panel changes

applications

Panduit computer printable terminal block markers are ideally suited for printing markers for terminal block labeling applications within industrial control panels. Panduit terminal block makers are designed from a unique material and with an innovative design that allows them to be printed

on-demand with the TDP43ME, and with a standard resin ribbon. The markers are provided on a continuous reel to allow printing of the precise quantity needed for a job. The continuous design makes printing and installing markers faster as well.

Terminal Block Markers

5mm x 12mm:	TB05X12EWT-AB1
6mm x 12mm:	TB06X12EWT-AB1
8mm x 12mm:	TB08X12EWT-AB1
5mm x 8mm:	TB05X08EWT-AB2
6mm x 8mm:	TB06X08EWT-AB2

Easy Mark™ PLUS Labeling Software

CD-ROM:	EMPLUS-CD
Online download:	EMPLUS-DL
USB flash drive:	EMPLUS-2GO
Server based version:	EMPLUS-SERVER

CAD-Connect Labeling Software

CD-ROM:	PROG-CCCD
----------------	-----------

Thermal Transfer Desktop Printer

300 dpi:	TDP43ME
External roll stand(required):	TDP43ME-RS

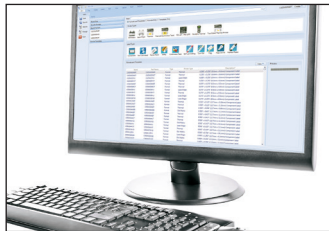
Recommended Ribbon

TDP43ME black resin 1" wide:	RMER1BL
-------------------------------------	---------

Other Compatible Ribbons

TDP43ME black resin 2" wide:	RMER2BL
TDP43ME black resin 4" wide:	RMER4BL

Terminal Block Markers



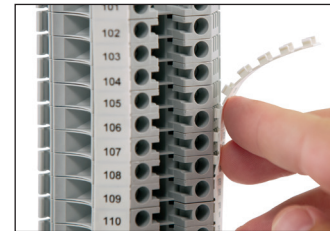
Create and print terminal block markers quickly using Easy-Mark™ Plus Labeling Software.



Continuous reel of markers enables fast printing and aligns easily in printer using snap-in width guides.



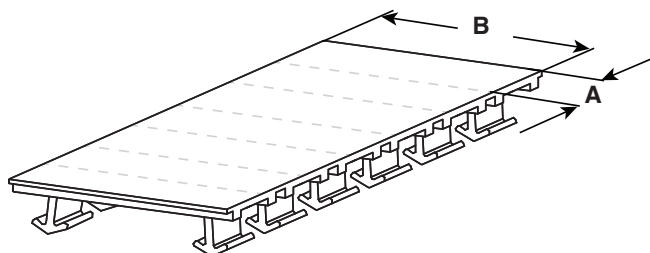
Print terminal block markers using TDP43ME Thermal Transfer Desktop Printer and accessory roll stand.



Durable marker design allows quick and easy installation.

part information

Part Number	Description	Color	A Width mm	B Height mm	Markers Per Roll	Allen-Bradley Terminal Block Compatibility	Weidmuller Terminal Block Compatibility
TB05X12EWT-AB1	Flexible terminal block markers on continuous rolls	White	5.0	12.0	1000	1492-J3, 1492-W3	WDU 2.5
TB06X12EWT-AB1	Flexible terminal block markers on continuous rolls	White	6.0	12.0	1000	1492-J4, 1492-W4	WDU 4
TB08X12EWT-AB1	Flexible terminal block markers on continuous rolls	White	8.0	12.0	750	1492-J6	WDU 6
TB05X08EWT-AB2	Flexible terminal block markers on continuous rolls	White	5.0	8.0	1000	1492-JD3, 1492-L3	WDR 2.5
TB06X08EWT-AB2	Flexible terminal block markers on continuous rolls	White	6.0	8.0	1000	1492-JD4, 1492-L4	WDR 4



TDP43ME printer and accessories

Part Number	Description
TDP43ME	300 dpi printer; includes printer, Panduit® Easy-Mark™ Plus Labeling Software, RMEH4BL black hybrid ribbon, AC power adapter with US power cord, USB cable, user manual, quick start card, driver disk, and TDP43ME-TB-KIT terminal block marker adapter kit; for use in North America.
TDP43ME-RS	External label roll stand for TDP43ME printer; used to rear feed labels that are supplied on 3" cores.
TDP43ME-TB-KIT	Terminal block marker adapter kit for TDP43ME printer (included with new TDP43ME printers and available as an optional accessory for older TDP43ME printers).
RMER1BL	Ribbon, resin, 1.1" wide, 300' long, for use with TDP43ME, Black.
EMPLUS-CD	Easy-Mark™ Plus Labeling Software – CD-ROM version.

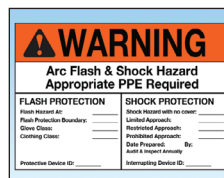
Related Products



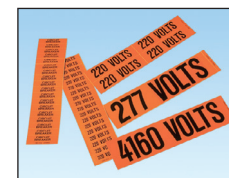
Raised Panel Labels



Wire/Cable Labeling



Safety Signs



Voltage Markers

DISCLAIMER: The information contained herein is intended as a guide for use by persons having technical skill at their own discretion and risk. Before using, buyer shall determine the suitability of the Panduit product for his intended use and buyer assumes all risk and liability whatsoever in connection therewith.

WORLDWIDE SUBSIDIARIES AND SALES OFFICES

PANDUIT US/CANADA
Phone: 800.777.3300

PANDUIT EUROPE LTD.
London, UK
cs-emea@panduit.com
Phone: 44.20.8601.7200

PANDUIT SINGAPORE PTE. LTD.
Republic of Singapore
cs-ap@panduit.com
Phone: 65.6305.7575

PANDUIT JAPAN
Tokyo, Japan
cs-japan@panduit.com
Phone: 81.3.6863.6000

PANDUIT LATIN AMERICA
Guadalajara, Mexico
cs-la@panduit.com
Phone: 52.33.3777.6000

PANDUIT AUSTRALIA PTY. LTD.
Victoria, Australia
cs-usa@panduit.com
Phone: 61.3.9794.9020

For a copy of Panduit product warranties, log on to www.panduit.com/warranty

For more information

Visit us at www.panduit.com

Contact Customer Service by email: cs@panduit.com
or by phone: 800.777.3300

PANDUIT®

©2017 Panduit Corp.
ALL RIGHTS RESERVED.
IDSP27--WW-ENG
6/2017

Данный компонент на территории Российской Федерации

Вы можете приобрести в компании MosChip.

Для оперативного оформления запроса Вам необходимо перейти по данной ссылке:

<http://moschip.ru/get-element>

Вы можете разместить у нас заказ для любого Вашего проекта, будь то серийное производство или разработка единичного прибора.

В нашем ассортименте представлены ведущие мировые производители активных и пассивных электронных компонентов.

Нашей специализацией является поставка электронной компонентной базы двойного назначения, продукции таких производителей как XILINX, Intel (ex.ALTERA), Vicor, Microchip, Texas Instruments, Analog Devices, Mini-Circuits, Amphenol, Glenair.

Сотрудничество с глобальными дистрибьюторами электронных компонентов, предоставляет возможность заказывать и получать с международных складов практически любой перечень компонентов в оптимальные для Вас сроки.

На всех этапах разработки и производства наши партнеры могут получить квалифицированную поддержку опытных инженеров.

Система менеджмента качества компании отвечает требованиям в соответствии с ГОСТ Р ИСО 9001, ГОСТ РВ 0015-002 и ЭС РД 009

Офис по работе с юридическими лицами:

105318, г.Москва, ул.Щербаковская д.3, офис 1107, 1118, ДЦ «Щербаковский»

Телефон: +7 495 668-12-70 (многоканальный)

Факс: +7 495 668-12-70 (доб.304)

E-mail: info@moschip.ru

Skype отдела продаж:

moschip.ru

moschip.ru_4

moschip.ru_6

moschip.ru_9