



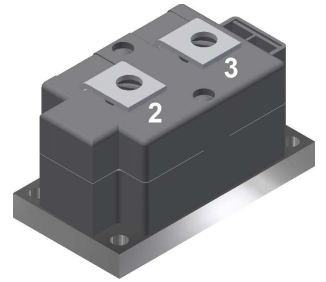
Standard Rectifier Module

$V_{RRM} = 1400\text{ V}$
 $I_{FAV} = 560\text{ A}$
 $V_F = 0.98\text{ V}$

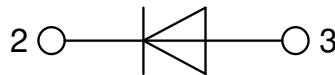
Single Diode

Part number

MDO500-14N1



Backside: isolated



Features / Advantages:

- Planar passivated chips
- Very low leakage current
- Very low forward voltage drop
- Improved thermal behaviour

Applications:

- Diode for main rectification
- For single and three phase bridge configurations
- Supplies for DC power equipment
- Input rectifiers for PWM inverter
- Battery DC power supplies
- Field supply for DC motors

Package: Y1

- Isolation Voltage: 3600 V~
- Industry standard outline
- RoHS compliant
- Base plate: Copper internally DCB isolated
- Advanced power cycling

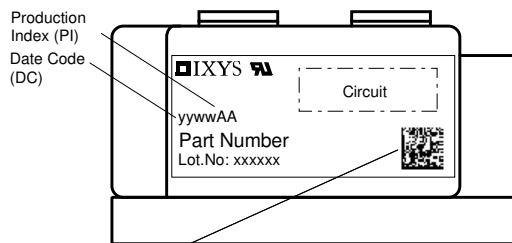
Disclaimer Notice

Information furnished is believed to be accurate and reliable. However, users should independently evaluate the suitability of and test each product selected for their own applications. Littelfuse products are not designed for, and may not be used in, all applications. Read complete Disclaimer Notice at www.littelfuse.com/disclaimer-electronics.



Rectifier				Ratings			
Symbol	Definition	Conditions		min.	typ.	max.	Unit
V_{RSM}	max. non-repetitive reverse blocking voltage					1500	V
V_{RRM}	max. repetitive reverse blocking voltage					1400	V
I_R	reverse current	$V_R = 1400$ V		$T_{VJ} = 25^\circ\text{C}$		1	mA
		$V_R = 1400$ V		$T_{VJ} = 140^\circ\text{C}$		30	mA
V_F	forward voltage drop	$I_F = 500$ A		$T_{VJ} = 25^\circ\text{C}$		1.09	V
		$I_F = 1000$ A				1.24	V
		$I_F = 500$ A		$T_{VJ} = 125^\circ\text{C}$		0.98	V
		$I_F = 1000$ A				1.17	V
I_{FAV}	average forward current	$T_C = 85^\circ\text{C}$		$T_{VJ} = 140^\circ\text{C}$		560	A
$I_{F(RMS)}$	RMS forward current	180° sine	d = 0.5				A
V_{FO}	threshold voltage			$T_{VJ} = 140^\circ\text{C}$		0.80	V
r_F	slope resistance					0.38	mΩ
R_{thJC}	thermal resistance junction to case					0.072	K/W
R_{thCH}	thermal resistance case to heatsink				0.024		K/W
P_{tot}	total power dissipation			$T_C = 25^\circ\text{C}$		1600	W
I_{FSM}	max. forward surge current	t = 10 ms; (50 Hz), sine		$T_{VJ} = 45^\circ\text{C}$		15.0	kA
		t = 8,3 ms; (60 Hz), sine		$V_R = 0$ V		16.2	kA
		t = 10 ms; (50 Hz), sine		$T_{VJ} = 140^\circ\text{C}$		12.8	kA
		t = 8,3 ms; (60 Hz), sine		$V_R = 0$ V		13.8	kA
I^2t	value for fusing	t = 10 ms; (50 Hz), sine		$T_{VJ} = 45^\circ\text{C}$		1.13	MA ² s
		t = 8,3 ms; (60 Hz), sine		$V_R = 0$ V		1.09	MA ² s
		t = 10 ms; (50 Hz), sine		$T_{VJ} = 140^\circ\text{C}$		812.8	kA ² s
		t = 8,3 ms; (60 Hz), sine		$V_R = 0$ V		788.8	kA ² s
C_J	junction capacitance	$V_R = 400$ V; f = 1 MHz		$T_{VJ} = 25^\circ\text{C}$		762	pF

Package Y1			Ratings			
Symbol	Definition	Conditions	min.	typ.	max.	Unit
I_{RMS}	RMS current	per terminal			600	A
T_{VJ}	virtual junction temperature		-40		140	°C
T_{op}	operation temperature		-40		125	°C
T_{stg}	storage temperature		-40		125	°C
Weight				650		g
M_D	mounting torque		4.5		7	Nm
M_T	terminal torque		11		13	Nm
$d_{Spp/APP}$	creepage distance on surface striking distance through air	terminal to terminal	16.0			mm
$d_{Spb/APb}$		terminal to backside	25.0			mm
V_{ISOL}	isolation voltage	t = 1 second	3600			V
		t = 1 minute	3000			V



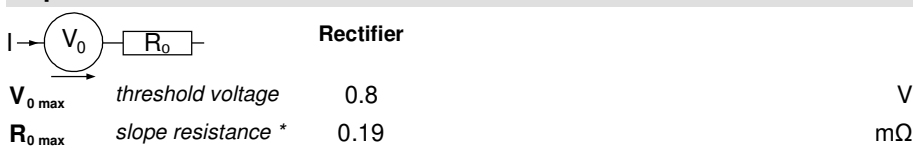
Data Matrix: part no. (1-19), DC + PI (20-25), lot.no.# (26-31), blank (32), serial no.# (33-36)

Ordering	Ordering Number	Marking on Product	Delivery Mode	Quantity	Code No.
Standard	MDO500-14N1	MDO500-14N1	Box	2	464805

Similar Part	Package	Voltage class
MDO500-12N1	Y1-2-CU	1200
MDO500-16N1	Y1-2-CU	1600
MDO500-18N1	Y1-2-CU	1800
MDO500-20N1	Y1-2-CU	2000

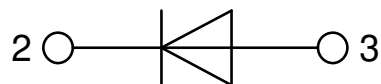
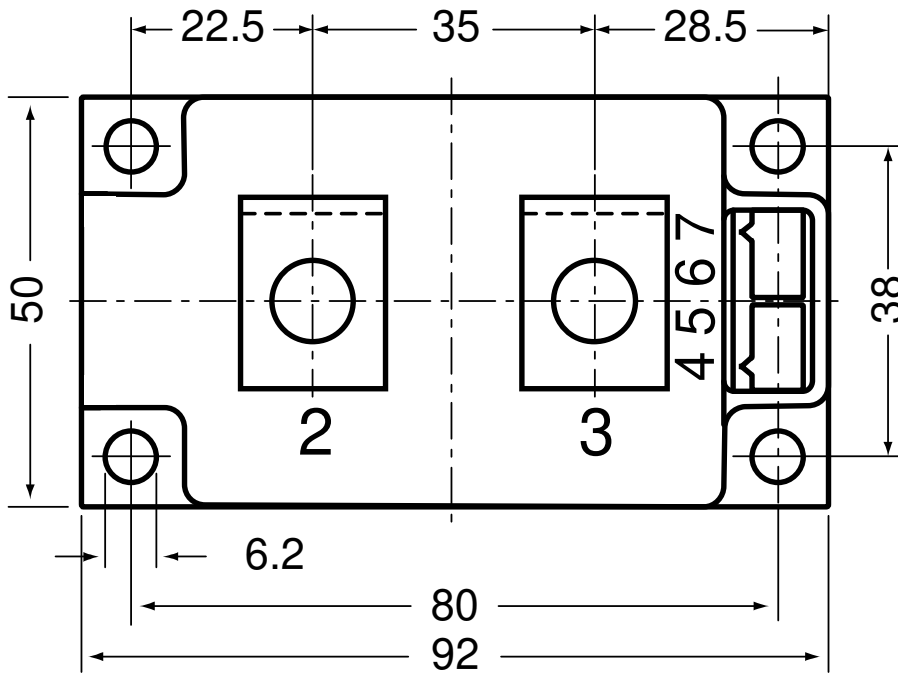
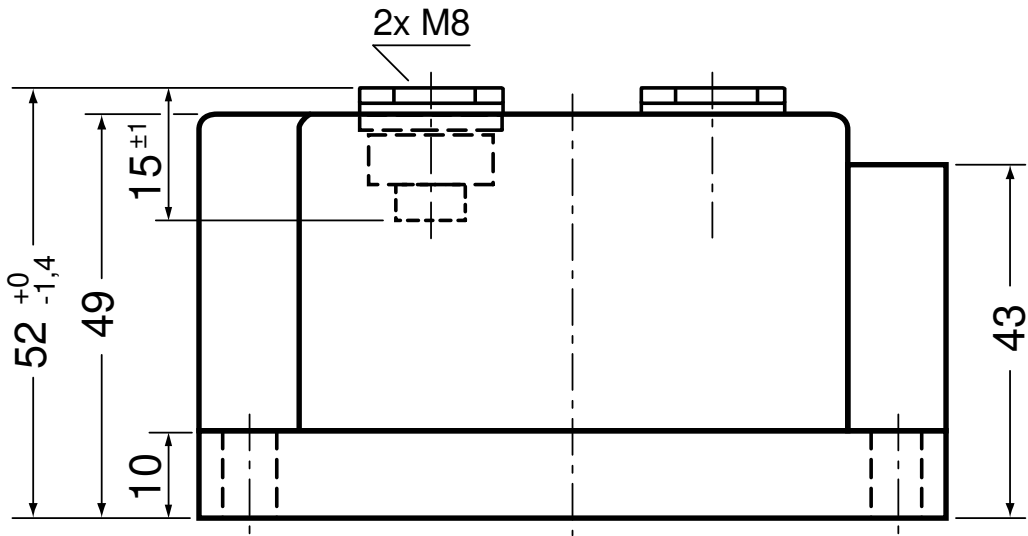
MDO500-22N1	Y1-2-CU	2200
-------------	---------	------

Equivalent Circuits for Simulation * on die level $T_{VJ} = 140^{\circ}\text{C}$





Outlines Y1



Rectifier

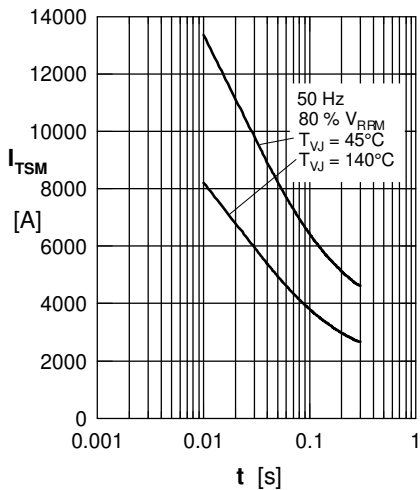


Fig. 1 Surge overload current
 I_{FSM} : Crest value, t : duration

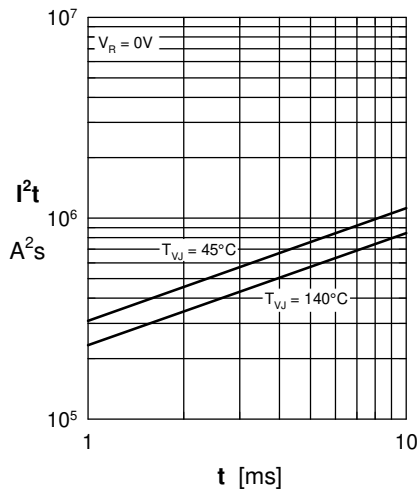


Fig. 2 I^2t versus time (1-10 ms)

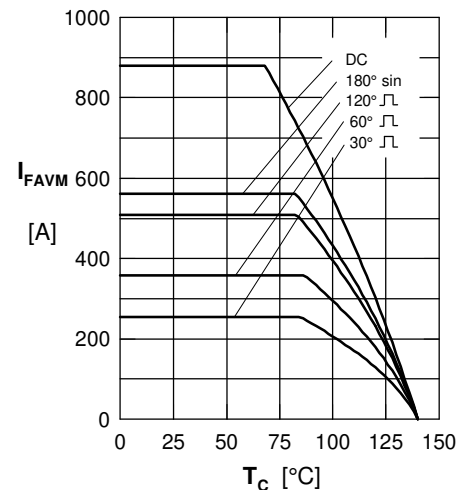


Fig. 3 Maximum forward current at case temperature

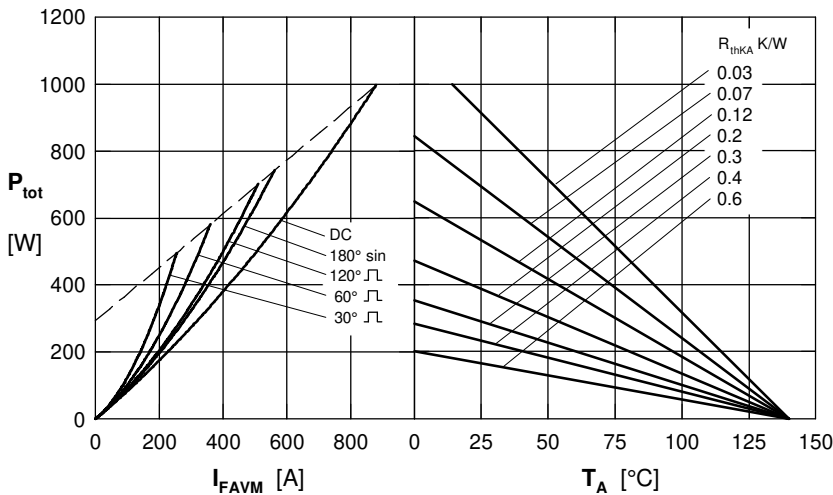


Fig. 4 Power dissipation vs. forward current and ambient temperature

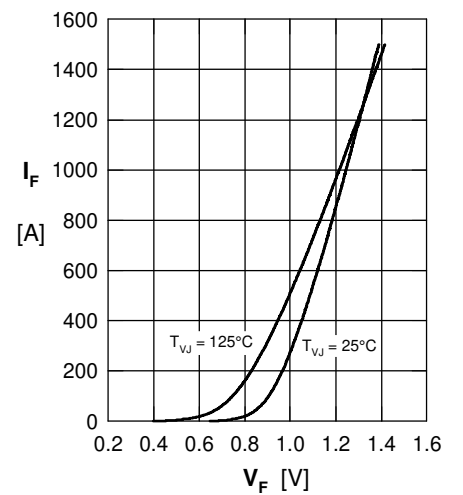


Fig. 5 Forward current I_F versus V_F

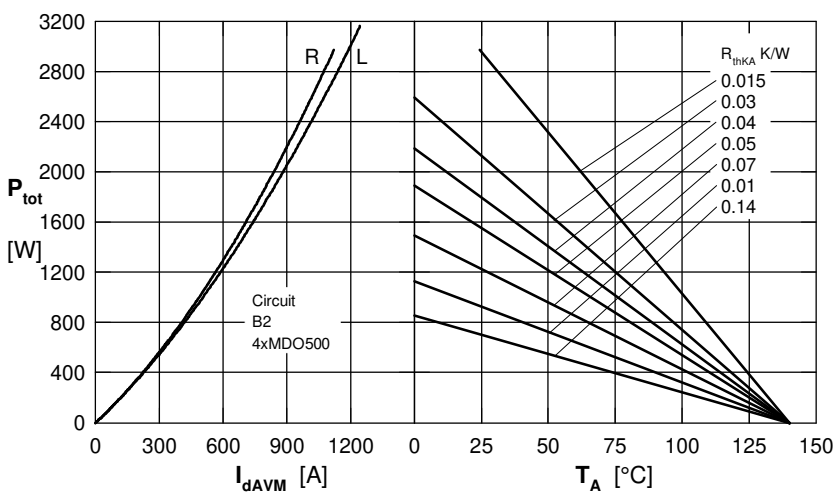


Fig. 6 Single phase rectifier bridge: Power dissipation vs. direct output current and ambient temperature. R = resistive load, L = inductive load

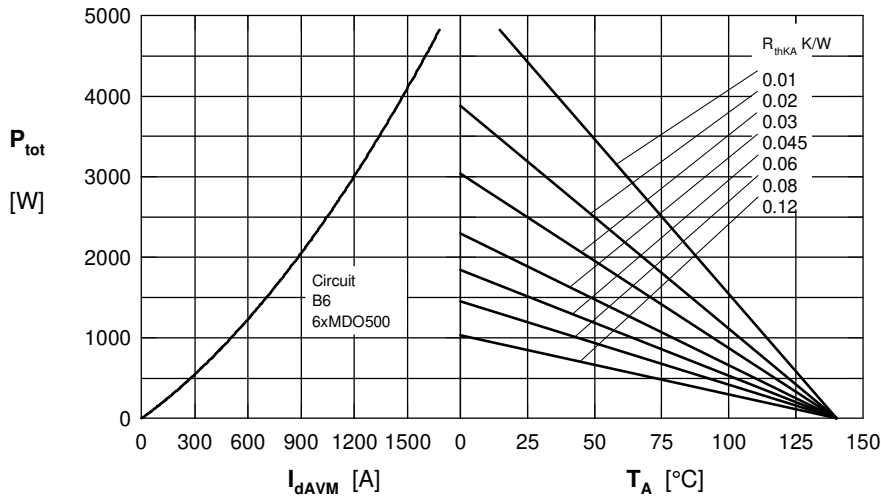
Rectifier


Fig. 6 Three phase rectifier bridge: Power dissipation versus direct output current and ambient temperature

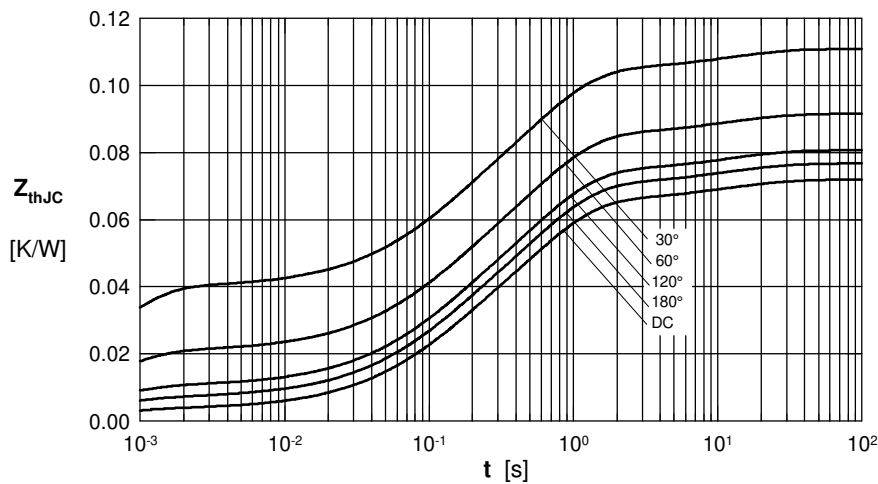


Fig. 7 Transient thermal impedance junction to case

R_{thJC} for various conduction angles d:

d	R_{thJC} (K/W)
DC	0.072
180°	0.0768
120°	0.081
60°	0.092
30°	0.111

Constants for Z_{thJC} calculation:

i	R_{thi} (K/W)	t_i (s)
1	0.0035	0.0054
2	0.0186	0.098
3	0.0432	0.54
4	0.0067	12

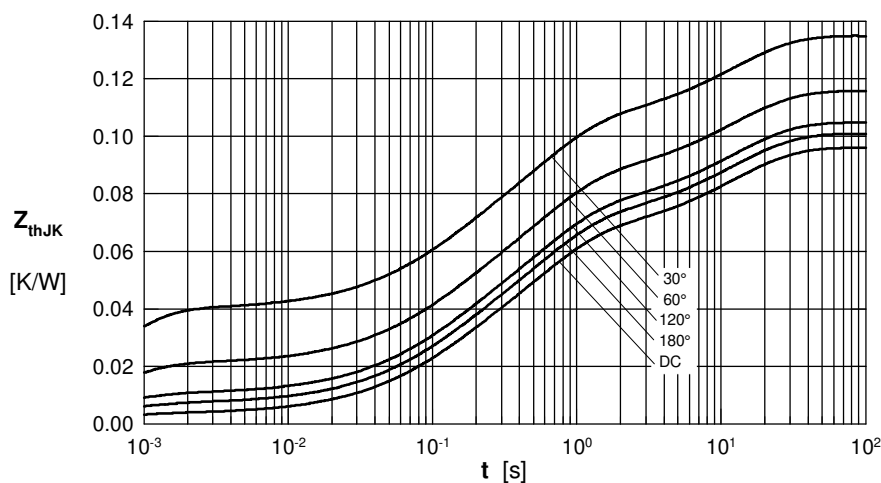


Fig. 8 Transient thermal impedance junction to heatsink

R_{thJK} for various conduction angles d:

d	R_{thJK} (K/W)
DC	0.096
180°	0.1
120°	0.105
60°	0.116
30°	0.135

Constants for Z_{thJK} calculation:

i	R_{thi} (K/W)	t_i (s)
1	0.0035	0.0054
2	0.0186	0.098
3	0.0432	0.54
4	0.0067	12
5	0.024	12

Данный компонент на территории Российской Федерации

Вы можете приобрести в компании MosChip.

Для оперативного оформления запроса Вам необходимо перейти по данной ссылке:

<http://moschip.ru/get-element>

Вы можете разместить у нас заказ для любого Вашего проекта, будь то серийное производство или разработка единичного прибора.

В нашем ассортименте представлены ведущие мировые производители активных и пассивных электронных компонентов.

Нашей специализацией является поставка электронной компонентной базы двойного назначения, продукции таких производителей как XILINX, Intel (ex.ALTERA), Vicor, Microchip, Texas Instruments, Analog Devices, Mini-Circuits, Amphenol, Glenair.

Сотрудничество с глобальными дистрибьюторами электронных компонентов, предоставляет возможность заказывать и получать с международных складов практически любой перечень компонентов в оптимальные для Вас сроки.

На всех этапах разработки и производства наши партнеры могут получить квалифицированную поддержку опытных инженеров.

Система менеджмента качества компании отвечает требованиям в соответствии с ГОСТ Р ИСО 9001, ГОСТ РВ 0015-002 и ЭС РД 009

Офис по работе с юридическими лицами:

105318, г.Москва, ул.Щербаковская д.3, офис 1107, 1118, ДЦ «Щербаковский»

Телефон: +7 495 668-12-70 (многоканальный)

Факс: +7 495 668-12-70 (доб.304)

E-mail: info@moschip.ru

Skype отдела продаж:

moschip.ru

moschip.ru_4

moschip.ru_6

moschip.ru_9