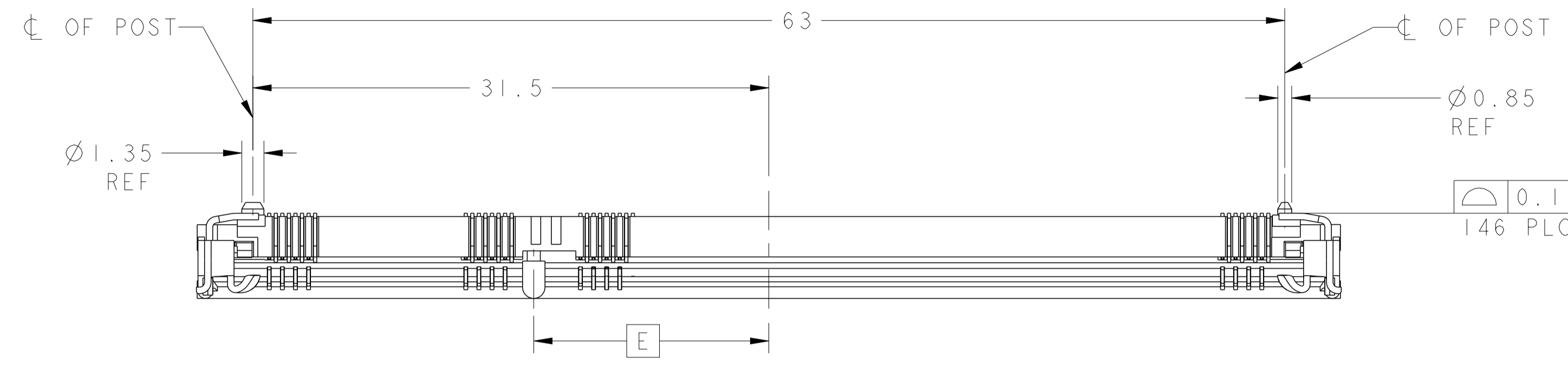
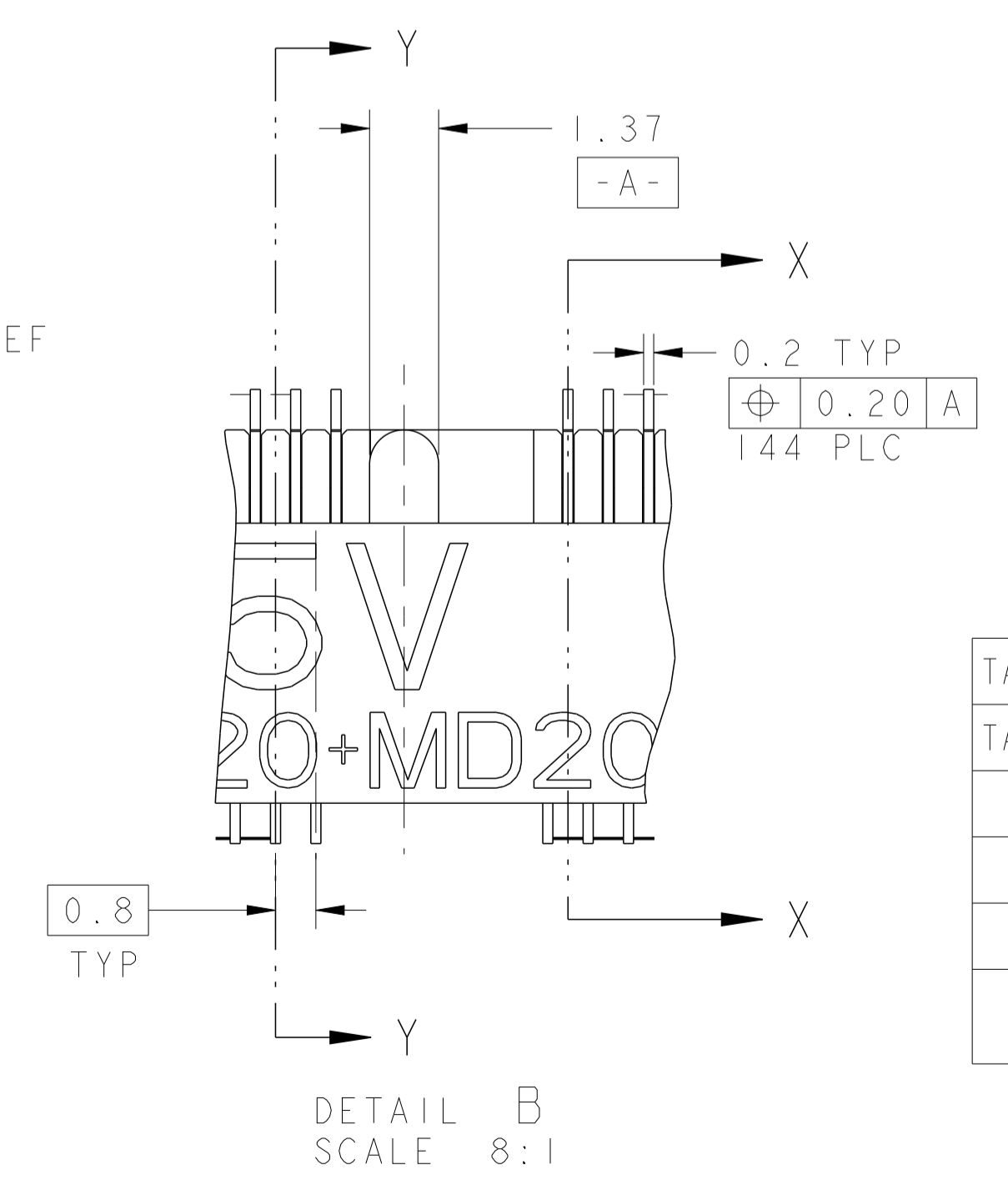
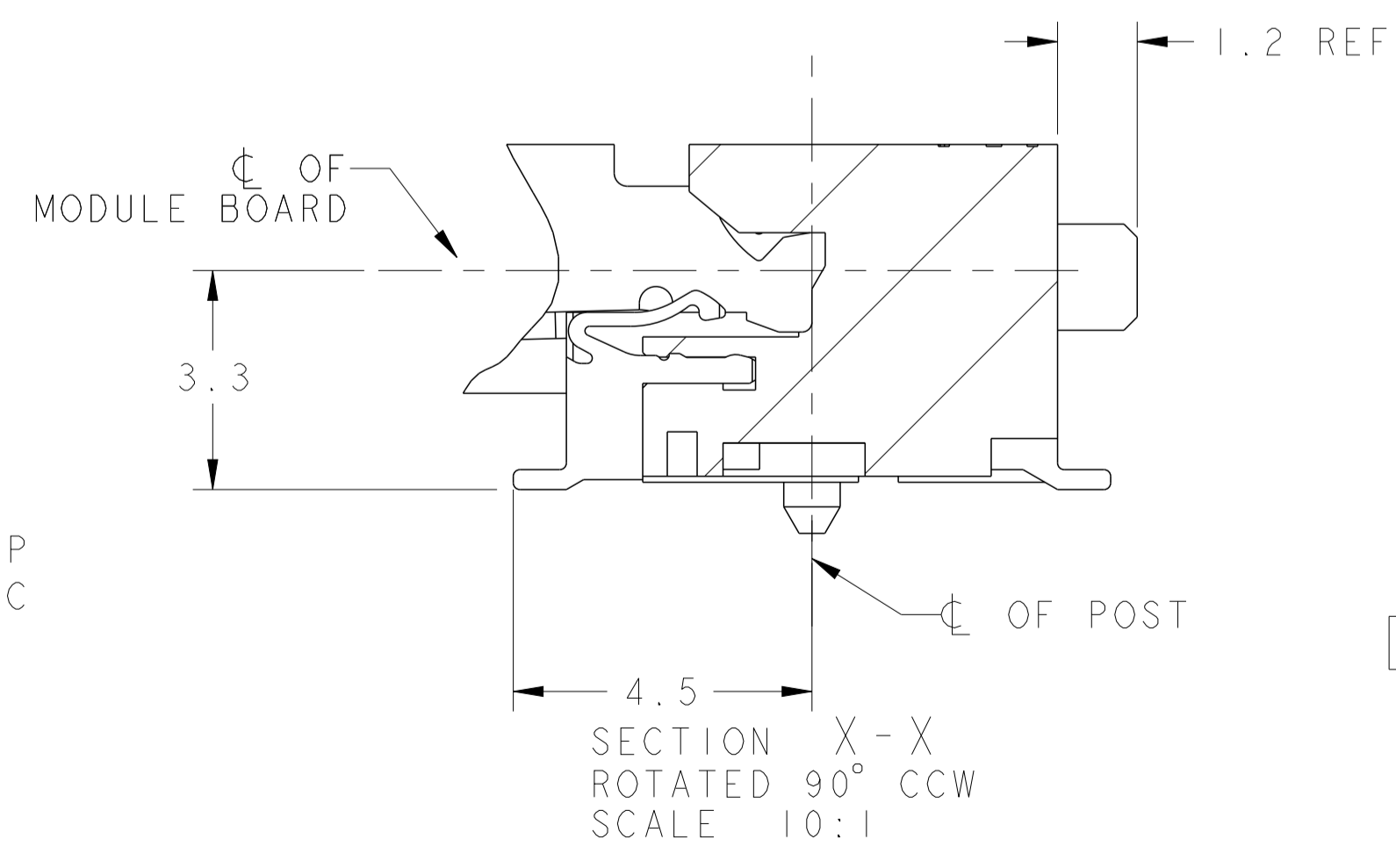
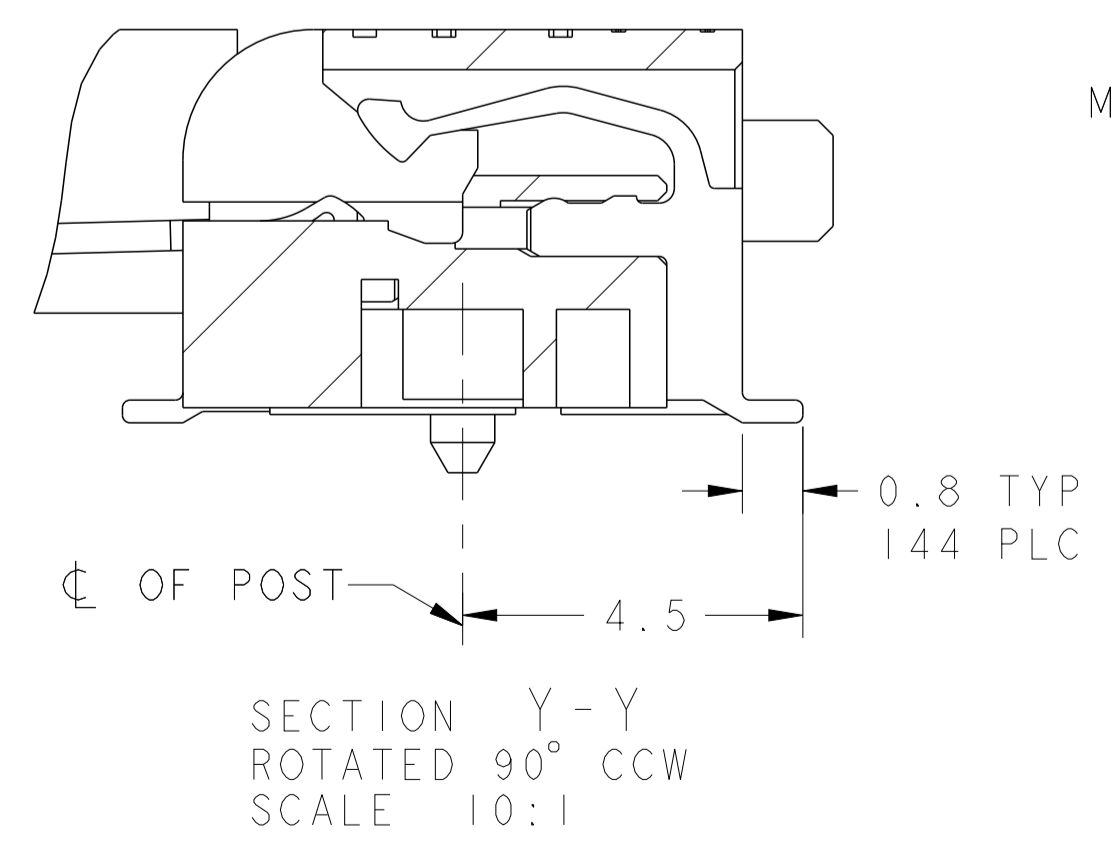
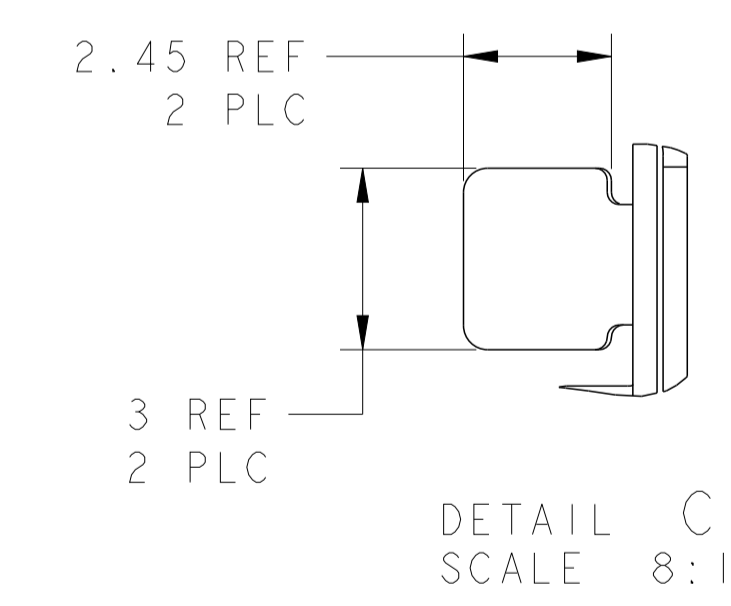
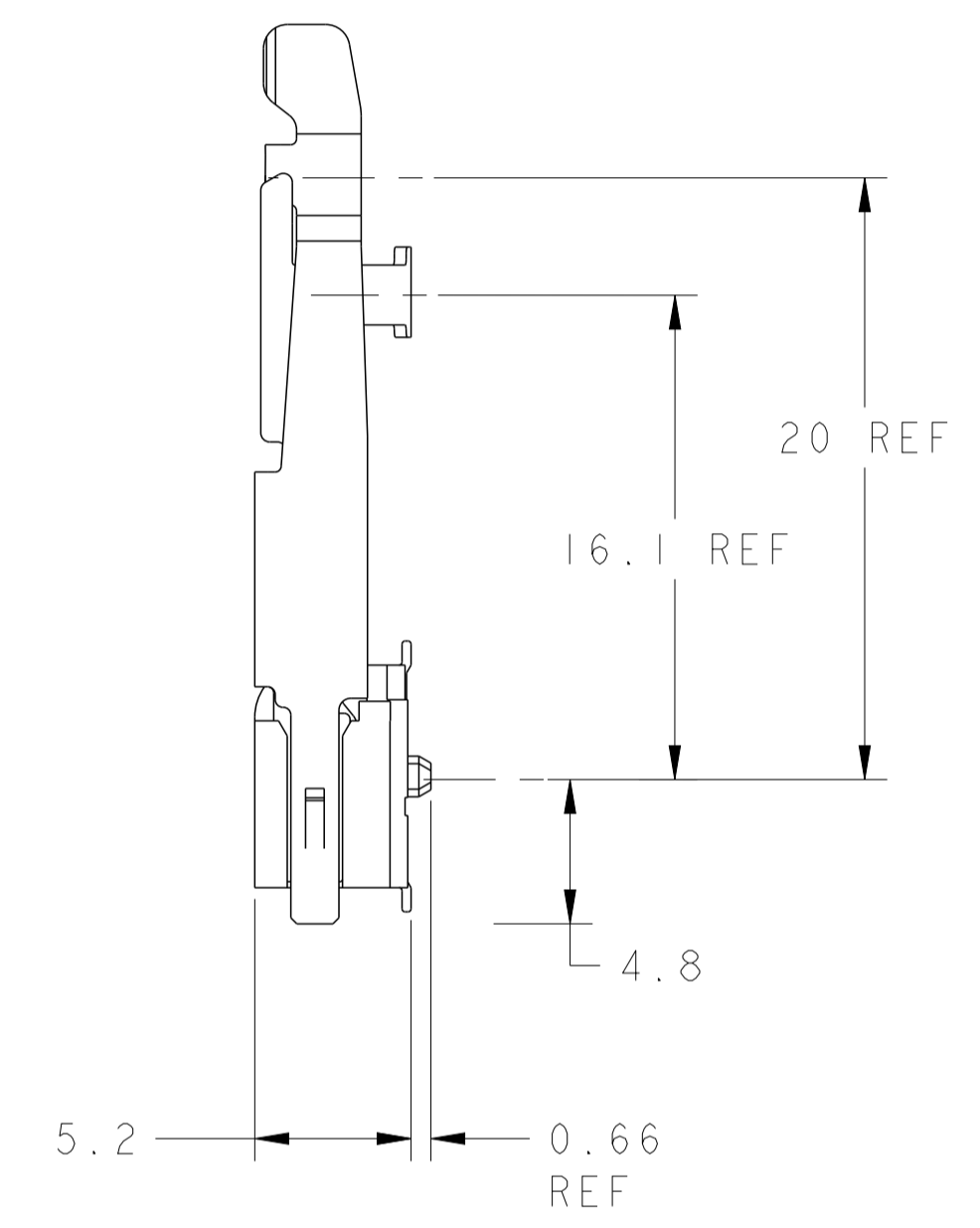
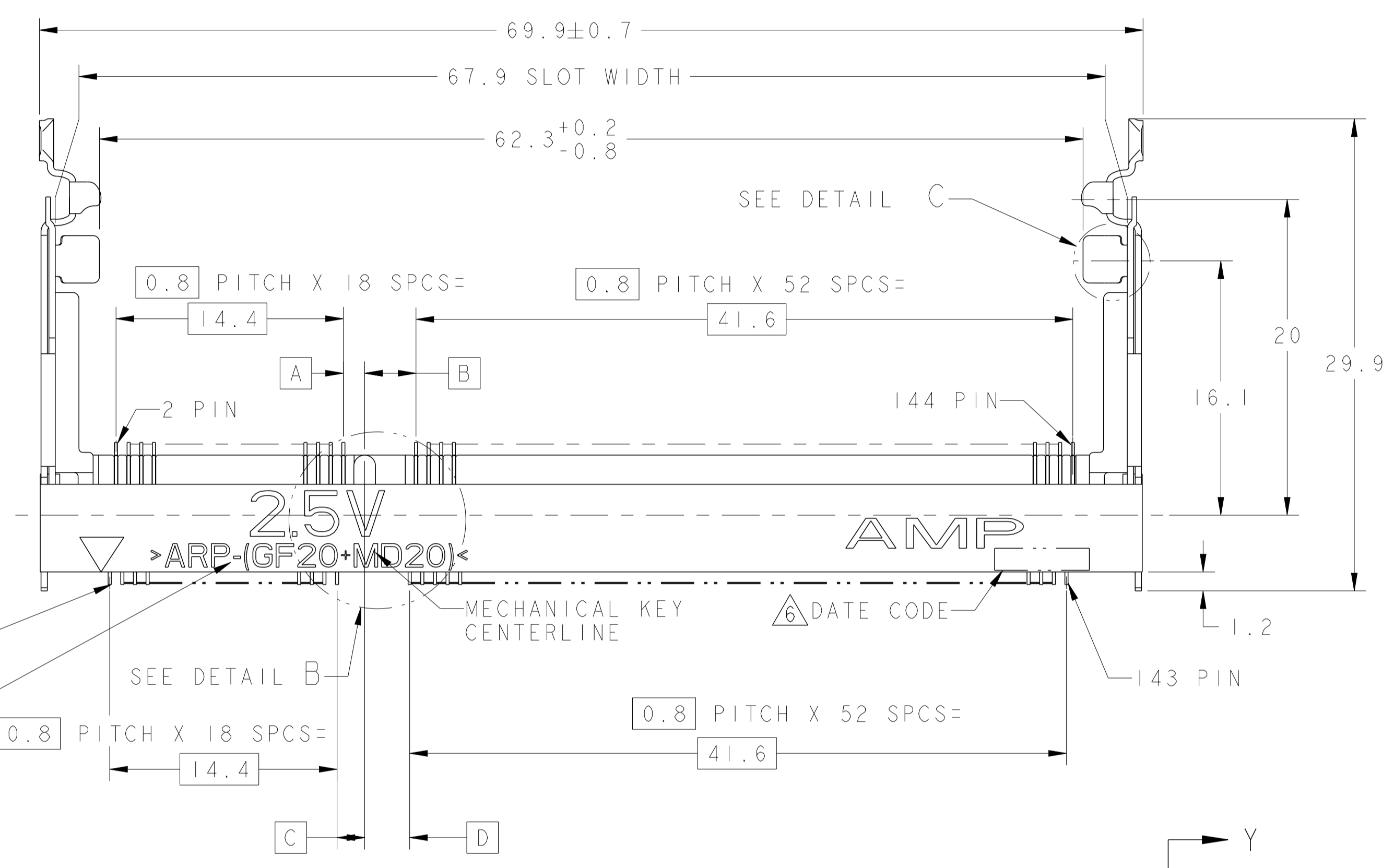


| LOC | DIST | REVISIONS                 |    |     |      |
|-----|------|---------------------------|----|-----|------|
| REV | DATE | DESCRIPTION               | BY | CHK | APPD |
| A2  |      | REVISED PER ECR-11-021344 |    |     |      |



- 1 MATERIAL:  
 HOUSING: HIGH TEMPERATURE PLASTIC, UL94V-0, NAT.  
 CONTACT: COPPER ALLOY  
 LATCH: SUS301 STAINLESS STEEL
- 2 FINISH:  
 CONTACT AREA: 0.00025 MIN GOLD ON  
 0.001 MIN ALL OVER NICKEL  
 SOLDERING AREA: 0.00005 MIN TO 0.00030 MAX GOLD.  
 LATCH: TIN.
- 3. TOLERANCES NON-ACCUMULATIVE.
- 4 PART PACKAGED IN TAPE & REEL AS PER EIA-1S704 STANDARD.  
 REEL DIAMETER SHALL BE 330mm,  
 TAPE WIDTH SHALL BE 88mm, AND  
 TAPE PITCH SHALL BE 36mm.
- 5. COMPLIES WITH JEDEC SOCKET OUTLINE SO-008.
- 6 DATE CODE (4-DIGITS), LOCATED AS SHOWN.  
 TO BE INTERPRETED AS FOLLOWS:  
 DIGIT # 1 - LAST DIGIT OF YEAR.  
 DIGITS # 2 AND # 3 - CALENDAR WEEK.  
 DIGIT # 4 - DAY OF THE WEEK (WITH SUNDAYS AS DAY 1).

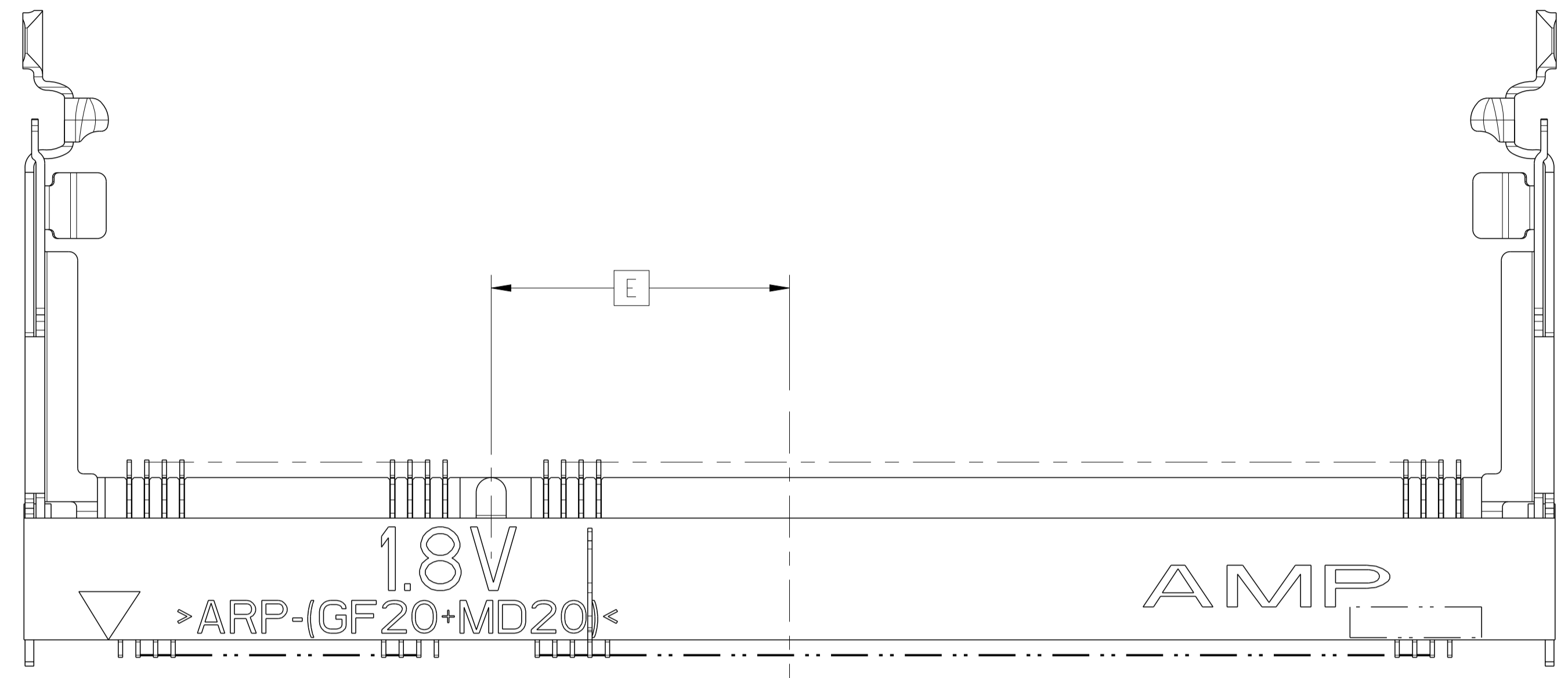


X-1735251-1 AS SHOWN

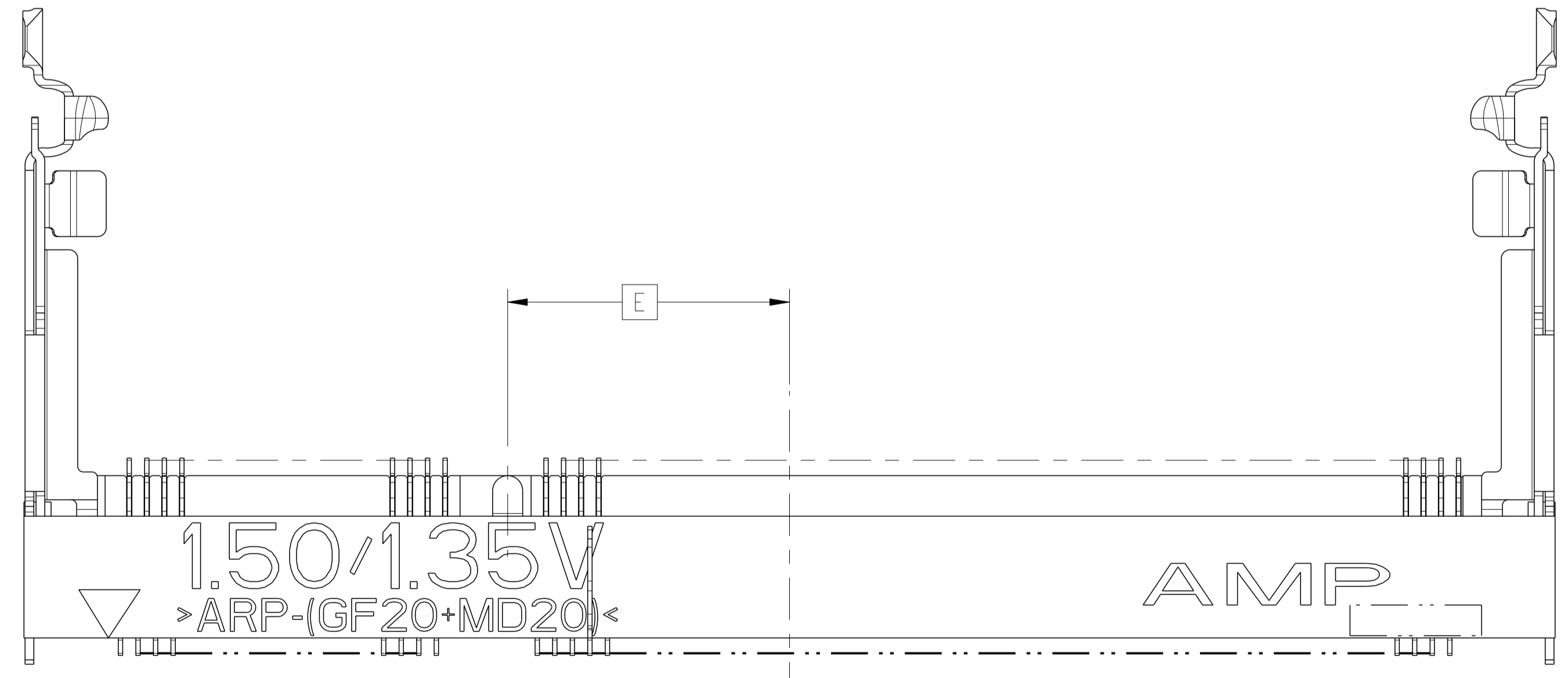
| TAPE & REEL | 12.85 | 1.35  | 3.25  | 1.75  | 2.85  | AC<br>1.50/1.35V (DDR3)         | 144 | 1-1735251-3 |
|-------------|-------|-------|-------|-------|-------|---------------------------------|-----|-------------|
| TAPE & REEL | 13.60 | 2.10  | 2.5   | 2.5   | 2.10  | AB<br>1.8V (DDR2)               | 144 | 1-1735251-2 |
| SOFT TRAY   | 12.85 | 1.35  | 3.25  | 1.75  | 2.85  | AC<br>1.50/1.35V (DDR3)         | 144 | 1735251-3   |
| SOFT TRAY   | 13.60 | 2.10  | 2.5   | 2.5   | 2.10  | AB<br>1.8V (DDR2)               | 144 | 1735251-2   |
| SOFT TRAY   | 14.35 | 2.85  | 1.75  | 3.25  | 1.35  | AA<br>2.5V (DDR1)               | 144 | 1735251-1   |
| PACKAGING   | DIM E | DIM D | DIM C | DIM B | DIM A | VARIATION<br>VOLTAGE (DDR TYPE) | POS | PART NUMBER |

|  |  |  |  |
|--|--|--|--|
| <small>THIS DRAWING IS A CONTROLLED DOCUMENT FOR AMP INCORPORATED<br/>                 ALL IN-SERVICE CHANGES AND THE CONTROL AND ENGINEERING<br/>                 ORGANIZATION SHOULD BE CONTACTED FOR THE LATEST REVISION.</small> |  | DWN: NYLEE<br>CHK: YJ SEE<br>APD: SE LEONG<br>PRODUCT SPEC: 108-1739<br>APPLICATION SPEC: 114-1114 | 25MAY05<br>NAME: S.O. DIMM SOCKET, 0.8mm PITCH, 144 POSITION, STD PROFILE<br>SIZE: A1<br>CAGE CODE: 00779<br>DRAWING NO: 1735251 |
| DIMENSIONS: mm<br>TOLERANCES UNLESS OTHERWISE SPECIFIED:<br>0 PLC ±0.2<br>1 PLC ±0.2<br>2 PLC ±0.2<br>3 PLC ±0.2<br>4 PLC ±0.2<br>ANGLES ±°  | FINISH: 146 PLC<br>0.1<br>144 PLC<br>0.20 A<br>144 PLC | MATERIAL: 1<br>FINISH: 2   | TE CONNECTIVITY<br>Singapore<br>SCALE: 4:1<br>SHEET: 1 of 3<br>REV: A2   |

| LOC | DIST | REVISIONS   |      |    |      |
|-----|------|-------------|------|----|------|
| REV | DATE | DESCRIPTION | DATE | BY | APPD |
| 1   | -    | SEE SHEET 1 | -    | -  | -    |



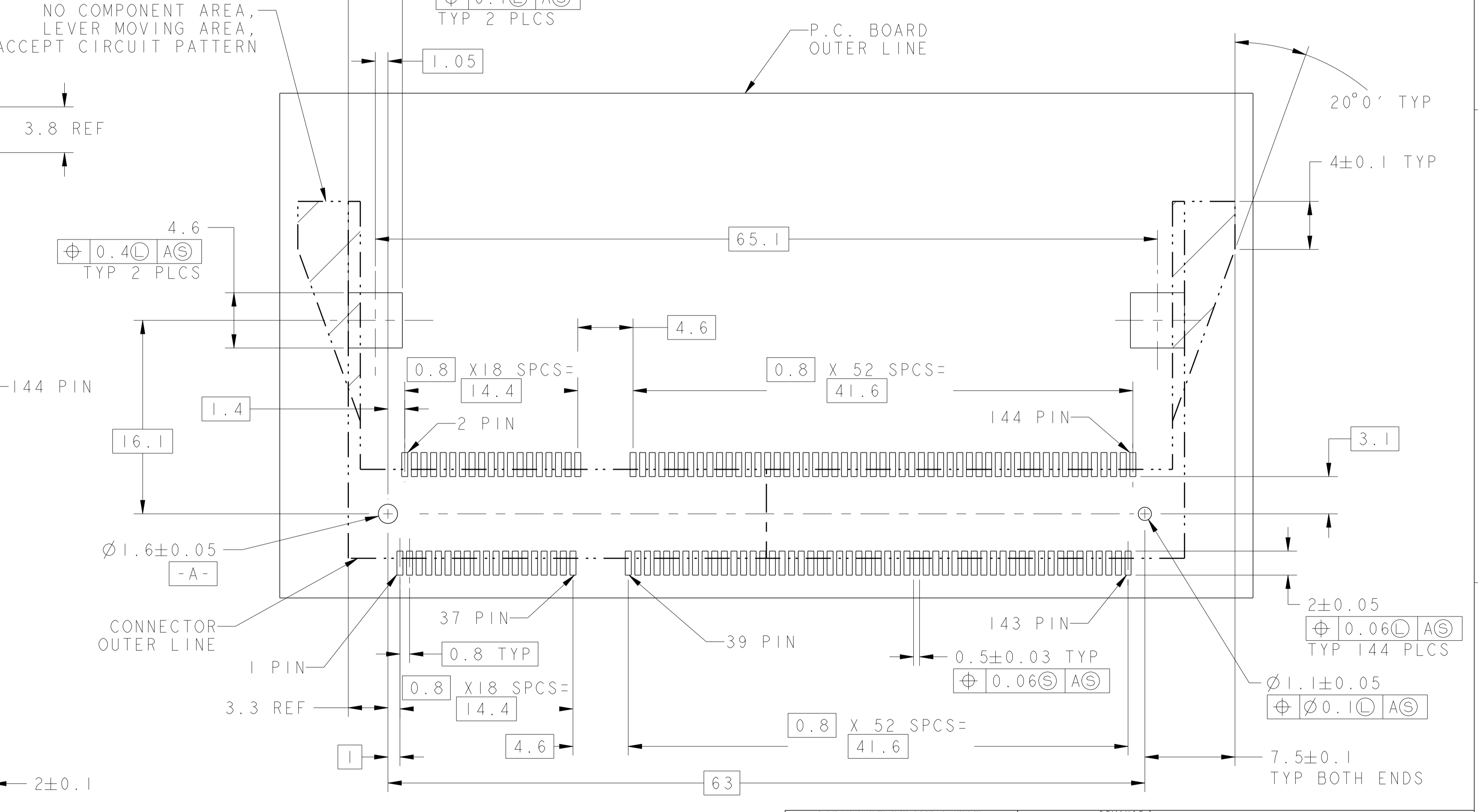
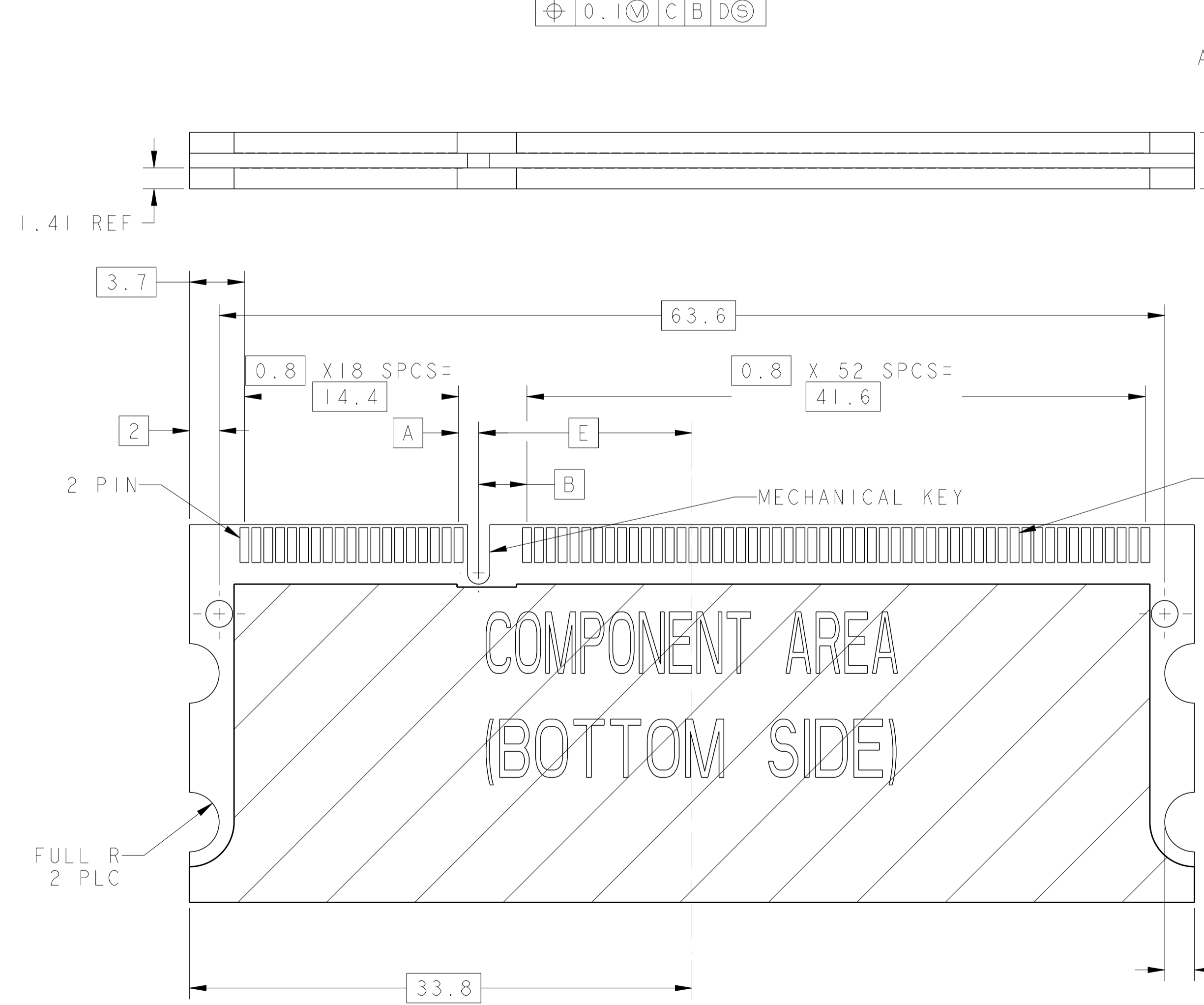
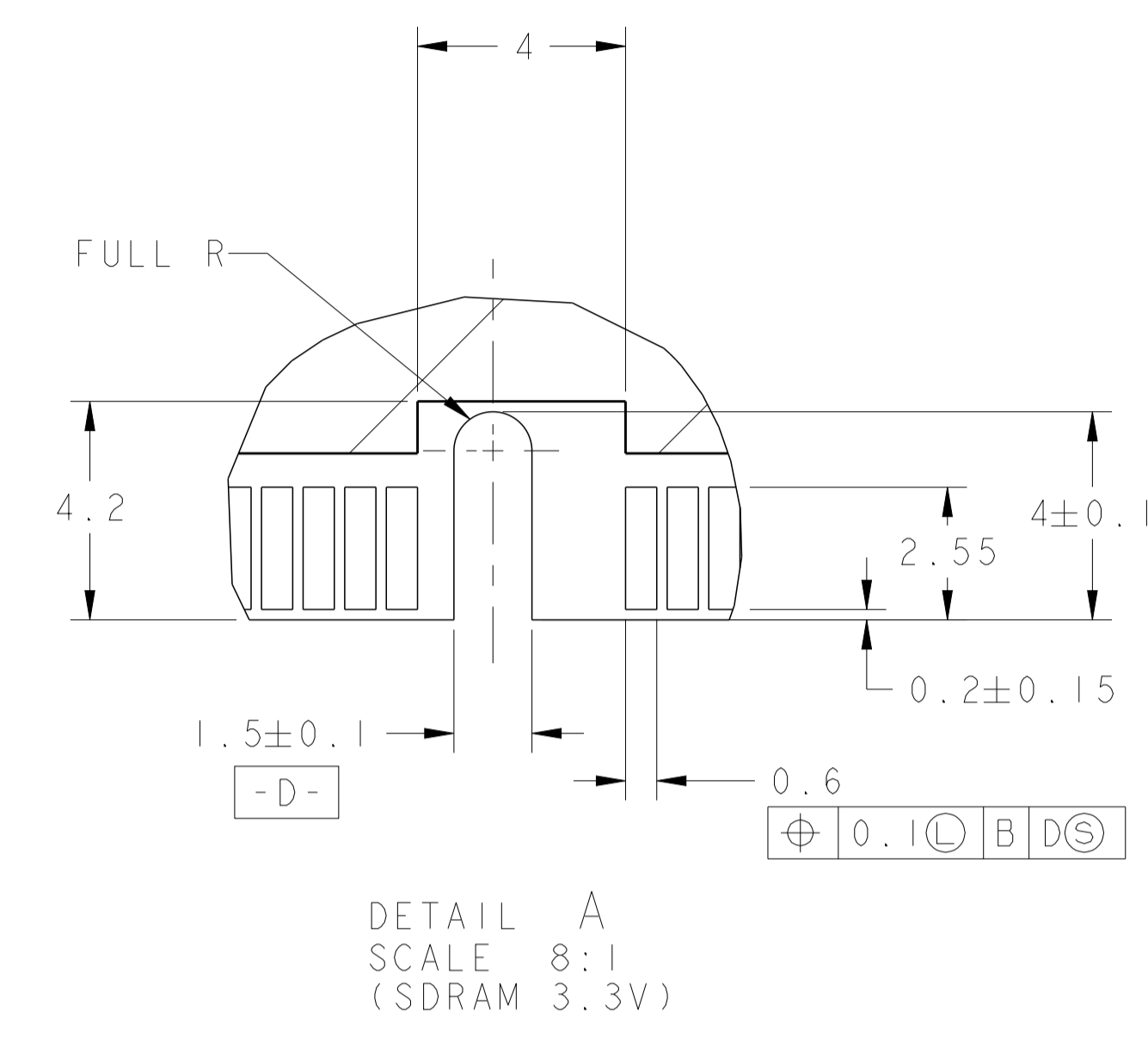
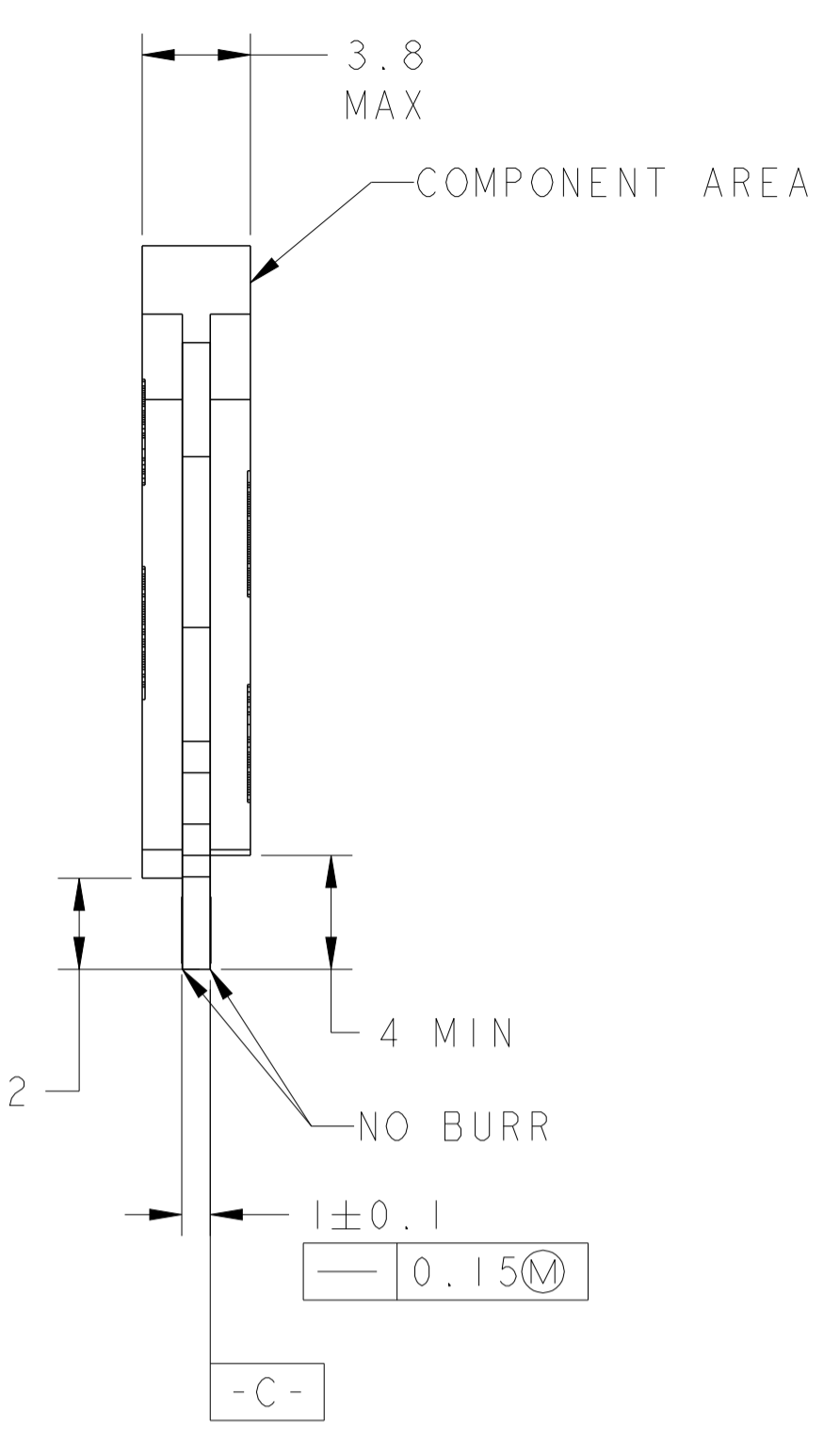
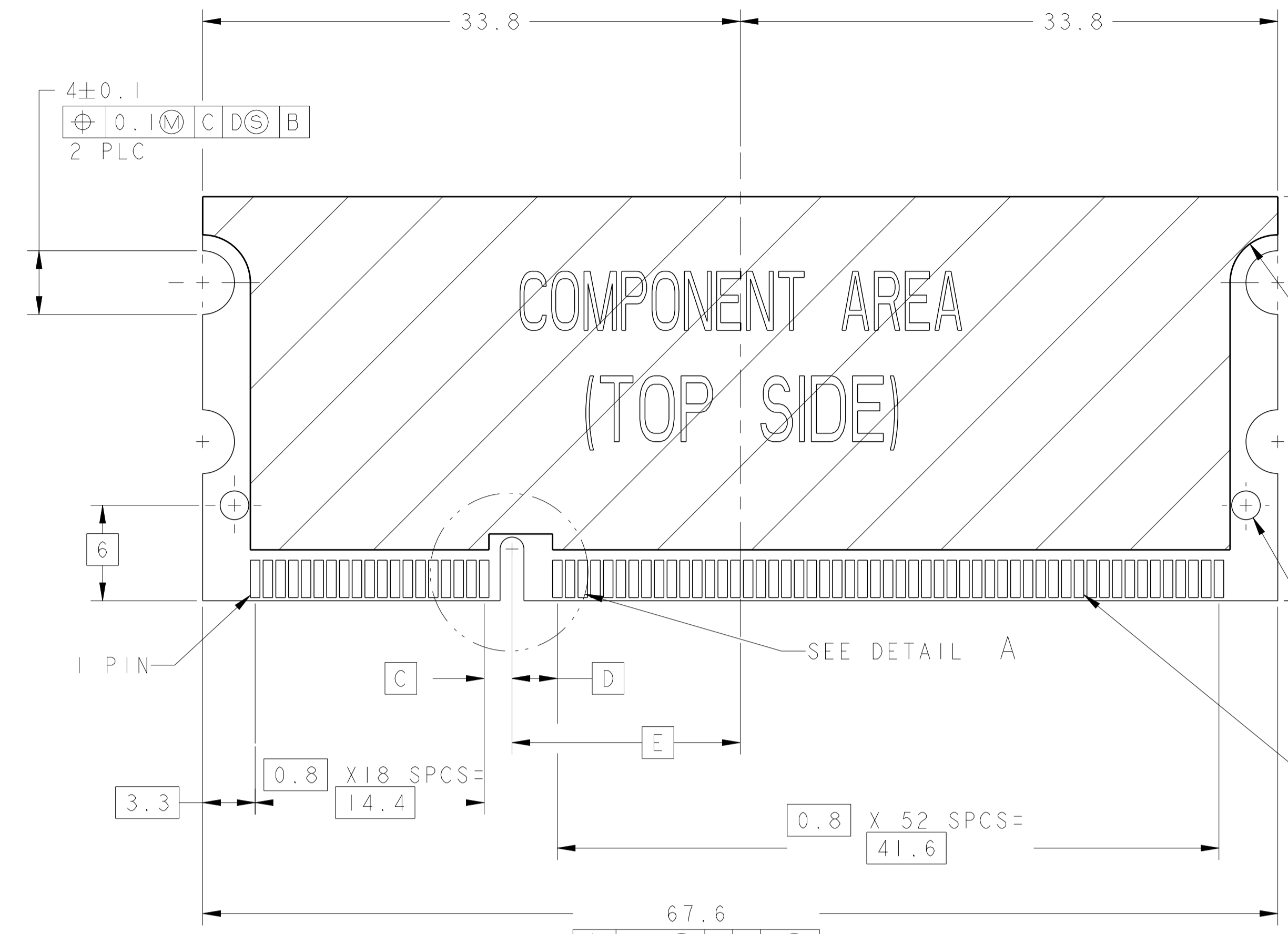
X-1735251-2 AS SHOWN



X-1735251-3 AS SHOWN

|  |  |   |  |
|--|--|---|--|
| <small>THIS DRAWING IS A CONTROLLED DOCUMENT FOR AMP INCORPORATED AND IS SUBJECT TO CHANGE. AMP, THE CONTROL AND ENGINEERING ORGANIZATION SHOULD BE CONTACTED FOR THE LATEST REVISION.</small> |  | DWN: WYLEE<br>CHK: Y.J. SEE<br>APVD: SE LEONG<br>PRODUCT SPEC: 108-1739<br>APPLICATION SPEC: 114-1114                   | 25MAT05<br><b>STE</b> TE CONNECTIVITY<br>Singapore |
| DIMENSIONS:<br>mm<br>  | TOLERANCES UNLESS OTHERWISE SPECIFIED:<br>0 PLC ±0.2<br>1 PLC ±0.2<br>2 PLC ±0.2<br>3 PLC ±0.2<br>4 PLC ±<br>ANGLES ±°<br>FINISH | NAME: S.O. DIMM SOCKET, 0.8mm PITCH, 144 POSITION, STD PROFILE<br>SIZE: A1<br>CAGE CODE: 00779<br>DRAWING NO: C-1735251 | SCALE: 4:1<br>SHEET: 2 of 3<br>REV: A2             |
| MATERIAL:  |  | WEIGHT:   | CUSTOMER DRAWING                                   |

| LOC |      | DIST |     | REVISIONS   |      |      |
|-----|------|------|-----|-------------|------|------|
| NO  | DATE | BY   | CHK | DESCRIPTION | DATE | APPD |
| 1   |      |      |     | SEE SHEET 1 |      |      |



RECOMMENDED P.C. BOARD PATTERN LAYOUT (CONNECTOR MOUNTING SIDE)

|   |   |  |  |                              |
|---|---|--|--|------------------------------|
| <small>THIS DRAWING IS A CONTROLLED DOCUMENT FOR AMP INCORPORATED AND IS SUBJECT TO CHANGE. AMP, THE CONTROLLED ENGINEERING ORGANIZATION SHOULD BE CONTACTED FOR THE LATEST REVISION.</small> |   | DWN: WYLEE<br>CHK: Y.J. SEE<br>APVD: SE LEONG<br>PRODUCT SPEC: 108-1739<br>APPLICATION SPEC: 114-1114<br>WEIGHT: -<br>CUSTOMER DRAWING | 25MAY05<br>NAME: S.O. DIMM SOCKET, 0.8mm PITCH, 144 POSITION, STD PROFILE<br>SIZE: A1<br>CAGE CODE: 00779<br>DRAWING NO: C-1735251<br>SCALE: 4:1<br>SHEET 3 of 3<br>REV A2 | TE CONNECTIVITY<br>Singapore |
| DIMENSIONS: mm<br>0 PLC ±0.2<br>1 PLC ±0.2<br>2 PLC ±0.2<br>3 PLC ±0.2<br>4 PLC ±0.2<br>ANGLES ±°   | TOLERANCES UNLESS OTHERWISE SPECIFIED:<br>0 PLC ±0.2<br>1 PLC ±0.2<br>2 PLC ±0.2<br>3 PLC ±0.2<br>4 PLC ±0.2<br>ANGLES ±° | MATERIAL:  | FINISH:  |                              |

## Данный компонент на территории Российской Федерации

### Вы можете приобрести в компании MosChip.

Для оперативного оформления запроса Вам необходимо перейти по данной ссылке:

<http://moschip.ru/get-element>

Вы можете разместить у нас заказ для любого Вашего проекта, будь то серийное производство или разработка единичного прибора.

В нашем ассортименте представлены ведущие мировые производители активных и пассивных электронных компонентов.

Нашей специализацией является поставка электронной компонентной базы двойного назначения, продукции таких производителей как XILINX, Intel (ex.ALTERA), Vicor, Microchip, Texas Instruments, Analog Devices, Mini-Circuits, Amphenol, Glenair.

Сотрудничество с глобальными дистрибьюторами электронных компонентов, предоставляет возможность заказывать и получать с международных складов практически любой перечень компонентов в оптимальные для Вас сроки.

На всех этапах разработки и производства наши партнеры могут получить квалифицированную поддержку опытных инженеров.

Система менеджмента качества компании отвечает требованиям в соответствии с ГОСТ Р ИСО 9001, ГОСТ РВ 0015-002 и ЭС РД 009

### Офис по работе с юридическими лицами:

105318, г.Москва, ул.Щербаковская д.3, офис 1107, 1118, ДЦ «Щербаковский»

Телефон: +7 495 668-12-70 (многоканальный)

Факс: +7 495 668-12-70 (доб.304)

E-mail: [info@moschip.ru](mailto:info@moschip.ru)

Skype отдела продаж:

moschip.ru

moschip.ru\_4

moschip.ru\_6

moschip.ru\_9